

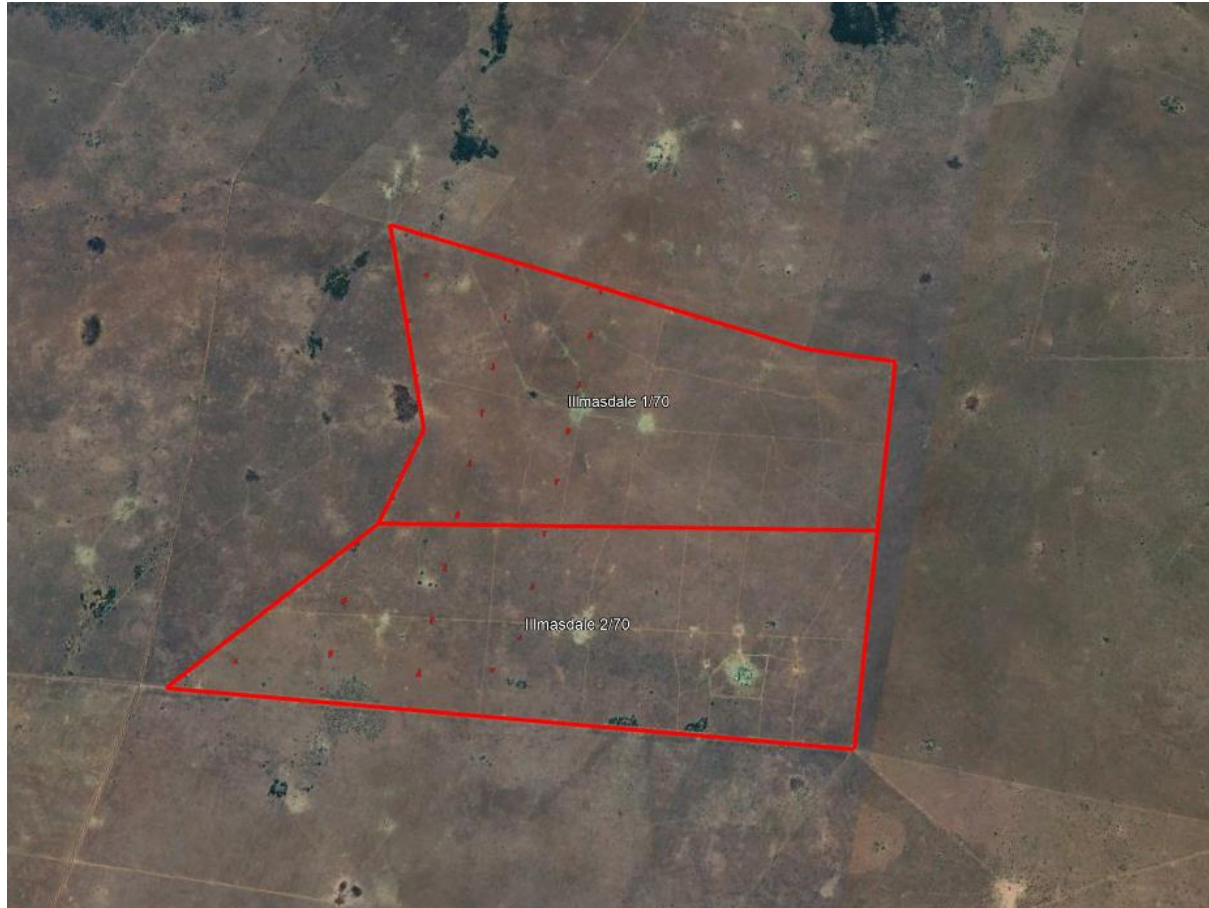
Nguni Solar Power Plant (RF) (Pty) Ltd.

**Key features observed during the site inspection conducted on 27 September 2022 on the Nguni Solar Power Plant site, located on the following farm:**

Portion 1& 2 of the Farm Illmasdale No. 70, situated within the JB Marks Local Municipality area of jurisdiction.

**Nguni Solar Power Plant – Preferred Site (Option A)**

**Plate 1:** The proposed preferred site for the Nguni solar facility.



**Plate 2:** The site (taken towards the east)



**Plate 3:** The site (taken towards the north)



**Plate 4:** The site (taken towards the northeast)



**Plate 5:** The site (taken towards the northwest)



**Plate 6:** The site (taken towards the south)



**Plate 7:** The site (taken towards the southeast)



**Plate 8:** The site (taken towards the southwest)





**Plate 9:** The site (taken towards the W)

