



REPORT ON THE RELOCATION OF GRAVES

**NKMC-15 GRAVE RELOCATION PROJECT
FARM UITKOMST 541 JT, NKOMATI MINE
NEAR BADPLAAS, MPUMALANGA**

RELOCATION OF GRAVES AFFECTED BY MINING ACTIVITIES

Issue Date: 2013

Revision No.: 0

SAHRA PERMIT NUMBER: 358; CaseID: 2599

Declaration of Independence

The report has been compiled by PGS Heritage, an appointed Heritage Specialist for Nkomati Mine. The views stipulated in this report are purely objective and no other interests are displayed during the decision making processes discussed in this document.

HERITAGE CONSULTANT: PGS Heritage

REPORT COMPILED BY: Henk Steyn, Jennifer Kitto and Marko Hutten

CONTACT PERSON: Henk Steyn
Tel: +27 (0) 12 332 5305
Email: henk@gravesolutions.co.za

SIGNATURE:



ACKNOWLEDGEMENT OF RECEIPT

CLIENT: Nkomati Mine

CONTACT PERSON: Charles Mathoma
Tel: +27 (0) 13 712 7607
Email: Charles.Mathoma@Nkomati.co.za

SIGNATURE:

EXECUTIVE SUMMARY

THE RELOCATION OF THREE POSSIBLE GRAVES FROM THE NKMC15 SITE, ON THE FARM NKOMATI 770 JT (FORMERLY UITKOMST 541 JT) NEAR BADPLAAS, MPUMALANGA PROVINCE

This report is submitted in fulfilment of the requirements of:

- ❑ The **South African Heritage Resources Agency, Permit No. 358 (CaseID: 2599)**, issued under Section 36(3) of the National Heritage Resources Act, Act no. 25 of 1999 to Henk Steyn.
- ❑ The agreement between *PGS Heritage* and *Nkomati Mine* for the completion of the NKMC15 Grave investigation project.

PGS Heritage was contracted by *Nkomati Mine* to investigate (and relocate if necessary) by means of an archaeological excavation three possible graves, which were situated on Farm Nkomati 770 JT (formerly Uitkomst 541 JT). The graves were to be affected by the expansion of an opencast pit at Nkomati Mine, Badplaas, Mpumalanga.

This report documents the relocation of the graves (as required by SAHRA in terms of section 36 of the National Heritage Resources Act, 25 Of 1999) implemented under the SAHRA Permit, No 358 (CaseID: 2599), issued by the SAHRA Burial Grounds and Graves Unit.

CONTENTS PAGE

1. INTRODUCTION	1
2. SOCIAL CONSULTATION	1
3. LEGAL COMPLIANCE.....	1
4. METHODOLOGY	2
4.1 Method of excavation	2
5. EXHUMATION OF REMAINS AND DETAILS OF DECEASED.....	3
5.1 General discussion	3
5.2 Description of individual graves	4
6. Conclusion	15
7. LITERATURE CITED	15

LIST OF APPENDICES

APPENDIX A – LOCALITY AND SURVEY MAPS

APPENDIX B – SITE NOTICES

APPENDIX C – NEWSPAPER NOTICES

APPENDIX D – COPIES OF RELEVANT PERMITS

LIST OF FIGURES

<i>Figure 1 – NKMC 15/1, “Grave dressing” of packed stones</i>	<i>5</i>
<i>Figure 2 – NKMC 15/1, No grave pit, no human remains and no coffin remains.....</i>	<i>5</i>
<i>Figure 3 – Grave NKMC 15/2, Dressing</i>	<i>7</i>
<i>Figure 4 – Grave NKMC 15/2, Remains</i>	<i>7</i>
<i>Figure 5 – Grave NKMC 15/3, Dressing</i>	<i>9</i>
<i>Figure 6 – Grave NKMC 15/3, Remains</i>	<i>9</i>
<i>Figure 7 – Grave NKMC 15/4, Dressing</i>	<i>11</i>
<i>Figure 8 – Grave NKMC 15/4, Remains</i>	<i>11</i>
<i>Figure 9 - Grave NKMC 15/4, traditional dagga pipe.....</i>	<i>12</i>
<i>Figure 10 – Grave NKMC 15/5, Remains</i>	<i>14</i>
<i>Figure 11 – Grave NKMC 15/5, “Graham baby feeder” glass bottle</i>	<i>14</i>

1. INTRODUCTION

PGS Heritage was contracted by *Nkomati Mine* to investigate (and relocate if necessary) by means of an archaeological excavation three possible graves, which were situated on Farm Nkomati 770 JT (formerly Uitkomst 541 JT). The site would be negatively affected by the expansion of mining activities at the opencast pit at Nkomati Mine. None of the possible graves had headstones with inscriptions or names. The excavation subsequently revealed the presence of human remains, which were exhumed and re-interred on 16 July 2013 in the Badplaas Municipal Cemetery.

2. SOCIAL CONSULTATION

A comprehensive process, including site notices (**Appendix B**) and newspaper notices (**Appendix C**) was conducted with the aim of identifying any family members and negotiating the mitigation thereof with any affected and interested parties. During this process no-one claiming to be next of kin was identified as a result of the newspaper or site notices. It should be noted that the grave relocation process (and as such the social consultation process) at the mine has been on-going since 2006 and is still in process.

3. LEGAL COMPLIANCE

Exhumation and re-interment of human remains in Mpumalanga is governed by the Mpumalanga Cemeteries, Crematoria and Exhumation of Bodies Act, 2005 and the Health Act, 2003. The graves and mortal remains of victims of conflict and graves older than 60 years in a burial ground not administered by a local authority, as well as all graves older than 100 years, are also subject to the stipulations of the National Heritage Resources Act (Act 25 of 1999). All local laws and by-laws regarding cemeteries were also be adhered to.

In order to comply with the above, permissions to exhume and re-inter the human remains and associated grave dressings and cultural remains were obtained from the following responsible authorities (refer **Appendix D** for copies):

- South African Heritage Resources Agency (SAHRA). Permit No 358 (CaseID: 2599) was issued in this regard.
- The Mpumalanga Department of Health. Local health officials attended the exhumation proceedings.
- The Chief Albert Luthuli Local Municipality.

- The office of the Station Commissioner of the South African Police Services in Badplaas was informed of the date of exhumation seven days before the exhumation took place. Members of the SAPS attended the exhumation proceedings as required by the relevant legislation.
- The handling and reburial of the remains were done by a registered undertaker (Martins Funerals Belfast) as required by the relevant regulations.

4. METHODOLOGY

4.1 Method of excavation

The methods employed during exhumation aimed to recover all the remains, to minimise damage to the remains, to record the three-dimensional context of the remains and to preserve and respect the dignity of the buried individual. All evidence that might allude to the events leading to the death of the individual and circumstances regarding the event were recorded and interpreted.

The excavation methods employed accomplished the *in situ* exposure of the burial and associated artefacts (Nienaber and Steyn, 1999). The focus was on accurate and complete documentation (Nienaber, 1997). Various methods for the excavation of graves have been proposed by different authors (Hester, 1975; Joukowsky, 1980; Krogman and Iscan, 1986; Morse, 1978) and all stress the need for adequate workspace around the exposed remains and a systematic approach to the removal of individual bones. The archaeological method, including extensive test trenching to prevent damage to the remains, was employed. This approach was largely similar to that of forensic archaeology where buried body cases are concerned. The approach was adapted for each situation since graves vary in shape, size, depth and content (Nienaber, 1999). The methods used in forensic archaeology are discussed by Steyn, et.al. (2000).

In each case, the surface features of the grave were cleaned and documented. Hereafter any cultural material associated with the surface dressing was collected and catalogued, if such occurred. All observations regarding construction, materials and characteristics of the surface features were documented.

After the removal of the surface features, the extent of the burial pit was ascertained through excavation and observation of differences in the matrix. After the indications of the presence and characteristics of the burial pit were documented, the in-fill was excavated to expose the human remains and associated cultural materials. Removal of the matrix of the burial pit was accomplished through the test-trench approach, whereby a narrow trench (25-30 cm wide) is excavated with a trowel to a depth of between 15 and 20 cm in the lower third of the burial pit (in

this instance the lower third usually constituted the eastern side of the grave). This area is chosen since it is most likely that the femurs of the skeleton occur in this part of the grave. Since the femur is a robust bone, it is usually not easily damaged through excavation. If no indications of the presence of human remains were observed in the test trench, the remaining in-fill matrix, down to the depth of the test trench, was removed with a shovel. The matrix surrounding the remains was carefully screened to retrieve any possible cultural artefacts associated with the burial. This process was repeated until indications of the presence of human remains were observed.

As soon as human remains were encountered, care was taken to leave as much of the skeleton as possible covered in order to protect the remains from damage by excavation and to preserve the integrity of the context of the skeletal elements and possible associated cultural remains. The extent and characteristics of the burial pit were now documented and the workspace was assessed and enlarged if not sufficient. This was only done after documentation of the features of the burial pit and without sacrificing any vital information.

The excavation then continued with the aim of ascertaining the extent of the skeletal remains and the location of the different skeletal elements, after which the remains were uncovered, starting from the middle and working outwards. This method again ensures the minimum disturbance of the remains and associated cultural materials. As soon as the skeleton was uncovered, it was documented *in situ* and removed. A further test trench of 15 cm deep was dug in the area directly underlying the location of the remains to ensure that all possible remains and artefacts were found and recovered.

5. EXHUMATION OF REMAINS AND DETAILS OF DECEASED.

5.1 General discussion

The graves were located in an informal cemetery situated on the Nkomati Mine on the Farm Nkomati 770 JT (formerly Uitkomst 541 JT) at S25.74289 E30.61620, Badplaas, Mpumalanga.

The total number of graves exhumed was four, as an additional burial was exposed during test excavations. One additional feature was investigated but turned out not to be a grave. None of the graves had inscribed headstones with names and the next of kin of the remains is currently unknown. The human remains from all four graves were reinterred in separate new graves at the Badplaas Municipal Cemetery.

See the description of the exhumation of the individual graves below.

5.2 Description of individual graves

Grave No NKMC 15/1 (Not a grave, no reburial)

Name of deceased:	Unknown.
Age at death:	Unknown.
Date of death:	Unknown.
Name of family representative:	Unknown.
New grave number:	N/A
Location of grave:	The feature was identified near a section of a damaged stone walled kraal on the Farm Nkomati 770 JT (formerly Uitkomst 541 JT) near Badplaas, Mpumalanga.
Surface features of grave:	The feature consisted of a large oval shaped mound of packed stones. The feature was elongated and raised to approximately 0.5m. The dressing was orientated from west to east.
Grave goods:	None were found.
Measurements of grave pit:	NO grave pit. The excavation measured 2.1m (l) x 1m (w) x 1.75m (d).
Depth at which cultural remains were found:	None were found.
Depth at which human remains were found:	None were found
Burial position:	No human remains were recovered.
Description of human remains:	None were found
Synthesis of evidence:	The feature was excavated but no evidence of it being a grave was found.

Although there was what seemed to be a packed stone dressing at this site (**Figure 1**), no evidence of a grave was found on excavation (**Figure 2**).



Figure 1 – NKMC 15/1, “Grave dressing” of packed stones



Figure 2 – NKMC 15/1. No grave pit, human remains or coffin remains were found

Grave No NKMC 15/2

Name of deceased:	Unknown.
Age at death:	Unknown.
Date of death:	Unknown.
Name of family representative:	Unknown.
New grave number:	Grave number 124, Badplaas Municipal Cemetery
Location of grave:	The grave was situated close to a damaged stone walled kraal on the Farm Nkomati 770 JT (formerly Uitkomst 541 JT) near Badplaas, Mpumalanga.
Surface features of grave:	The grave had a large oval shaped mound of packed stones as dressing. The dressing was elongated and raised to approximately 0.5m. The dressing was orientated from west to east.
Grave goods:	None were found.
Measurements of grave pit:	2.1m (l) x 1m (w) x 1.75m (d). A line of flat rocks was placed on each side of the grave pit. The coffin was placed on top of these flat rocks, which served as supports for the coffin.
Depth at which cultural remains were found:	None were found.
Depth at which human remains were found:	1.75m
Burial position:	The individual was buried in a coffin and was placed in a supine position with the head at the western end. The head was slightly tilted to the left and was facing north-east. The arms were extended and were placed alongside the body. Both legs were also extended and were placed next to each other.
Description of human remains:	The remains were that of an adult and were in a fair state of preservation. Most of the bones were present and were found to be relatively intact. Most of the long bones, ribs, tarsals and carpals were recovered.
Synthesis of evidence:	The grave was that of an adult individual. The remains were reburied on July 16, 2013 in the Badplaas Municipal Cemetery (grave no 124).



Figure 3 – Grave NKMC 15/2, Dressing



Figure 4 – Grave NKMC 15/2, Remains

Grave No NKMC 15/3

Name of deceased:	Unknown.
Age at death:	Unknown.
Date of death:	Unknown.
Name of family representative:	Unknown.
New grave number:	Grave number 125, Badplaas Municipal cemetery
Location of grave:	The grave was situated close to a damaged stone walled kraal on the Farm Nkomati 770 JT (formerly Uitkomst 541 JT) near Badplaas, Mpumalanga.
Surface features of grave:	The grave had an oval shaped mound of packed stones as dressing. The dressing was elongated and raised to approximately 0.3m. The dressing was orientated from west to east. A flat rock was placed upright at the western end to serve as headstone.
Grave goods:	None were found.
Measurements of grave pit:	1.3m (l) x 0.75m (w) x 1.15m (d). A piece of corrugated iron was found on top of the coffin and remains.
Depth at which cultural remains were found:	None were found.
Depth at which human remains were found:	1.15m
Burial position:	The individual was buried in a coffin. The exact burial position could not be discerned as only a few small, unidentifiable fragments of bone and a few coffin remains were recovered.
Description of human remains:	The remains were that of a small child and were in a very poor state of preservation. Only a few small, unidentifiable fragments of bone were recovered, together with some soil from the bottom of the grave pit.
Synthesis of evidence:	The grave was that of a small child. The remains were reburied on July 16, 2013 in the Badplaas Municipal Cemetery (Grave no. 125).



Figure 5 – Grave NKMC 15/3, Dressing



Figure 6 – Grave NKMC 15/3, Remains

Grave No NKMC 15/4

Name of deceased:	Unknown.
Age at death:	Unknown.
Date of death:	Unknown.
Name of family representative:	Unknown.
New grave number:	Grave Number 126, Badplaas Municipal cemetery
Location of grave:	The grave was situated close to a damaged stone walled kraal on the Farm Nkomati 770 JT (formerly Uitkomst 541 JT) near Badplaas, Mpumalanga.
Surface features of grave:	The grave had an oval shaped mound of packed stones as dressing. The dressing was elongated and was slightly raised. The dressing was orientated from west to east.
Grave goods:	None were found.
Measurements of grave pit:	1.2m (l) x 1m (w) x 1.6m (d) and was oval shaped. A base of packed flat rocks was found at the bottom of the pit, on which the buried individual was placed.
Depth at which cultural remains were found:	A traditional dagga pipe was found at a depth of 1.5m next to the remains.
Depth at which human remains were found:	1.25m to 1.6m.
Burial position:	The individual was buried in a crouched sitting position, facing east. The arms were slightly flexed and were found to be crossed over each other. The arms were found on the inside of the two legs which were tightly flexed. The head was also found between the legs, but on top of the pelvic bones. It seemed as if this individual was buried in a crouching position within an ox-skin and that the skull, vertebrae and ribs collapsed on top of the pelvic bones during the process of decomposition.
Description of human remains:	The remains were that of an adult individual and were in a poor to fair state of preservation. Most of the bones were present and were found to be relatively intact. Most of the long bones, ribs, tarsals and carpals were recovered.
Synthesis of evidence:	The grave was that of an adult individual. The remains were reburied on July 16, 2013 in the Badplaas Municipal Cemetery (Grave no. 126).



Figure 7 – Grave NKMC 15/4, Dressing



Figure 8 – Grave NKMC 15/4, Remains



Figure 9 - Grave NKMC 15/4, traditional dagga pipe

Grave No NKMC 15/5

Name of deceased:	Unknown.
Age at death:	Unknown.
Date of death:	Unknown.
Name of family representative:	Unknown.
New grave number:	Grave number 127, Badplaas Municipal Cemetery
Location of grave:	The grave was situated close to a damaged stone walled kraal on the Farm Nkomati 770 JT (formerly Uitkomst 541 JT) near Badplaas, Mpumalanga.
Surface features of grave:	No surface features were present. The grave was identified through systematic test excavations
Grave goods:	None were found.
Measurements of grave pit:	1.2m (l) x 0.5m (w) x 0.9m (d). A piece of corrugated iron was placed on top of the coffin and remains.
Depth at which cultural remains were found:	A glass "Graham baby feeder" bottle was found at a depth of 0.9m next to the remains.
Depth at which human remains were found:	0.9m
Burial position:	The individual was buried in a coffin. The exact burial position could not be discerned as only a few small, unidentifiable fragments of bone and a few coffin remains were recovered.
Description of human remains:	The remains were that of a small child and were in a very poor state of preservation. Only a few small, unidentifiable fragments of bone were recovered, together with some soil from the bottom of the grave pit.
Synthesis of evidence:	The grave was that of a small child. The remains were reburied on July 16, 2013 in the Badplaas Municipal Cemetery (Grave No. 127).



Figure 10 – Grave NKMC 15/5, Remains



Figure 11 – Grave NKMC 15/5, “Graham baby feeder” glass bottle

6. CONCLUSION

During the relocation process human remains from four graves were relocated on 16 July 2013 from the Nkomati Mine situated on the farm Nkomati 770 JT (formerly Uitkomst 541 JT), near Badplaas, Mpumalanga. The overall preservation of the excavated human remains was very poor. The disinterred remains were reburied in the Badplaas Municipal Cemetery. No family members were present at the exhumation and reinterment of these graves, since no-one claiming to be next-of-kin had been identified during the public consultation process.

7. LITERATURE CITED

- Aufderheide, A.C. & Rodriguez-Martin, C. 1998. *The Cambridge Encyclopaedia of Human Paleopathology*. Cambridge: Cambridge University Press.
- Buikstra, J.E. & Ubelaker, D.H. 1994. Standards for data collection from human skeletal remains. *Arkansas Archaeological Survey Research Series*. no.: 44.
- De Villiers, H. 1968. *The skull of the South African Negro*. Johannesburg: Witwatersrand University Press.
- Ferembach, D., Schwidetzky, I. & Stloukal, M. 1980. Recommendations for age and sex diagnoses of skeletons. *Journal of Human Evolution*. 9:517-549.
- Hester, T.R. et.al. 1975. *A Guide to Field Methods in Archaeology*. Palo Alto.
- Joukowsky, M. 1980. *A Complete Manual of Field Archaeology*. Engelwood Cliffs.
- Krogman, W.M. & Iscan, M.Y. 1986. *The Human Skeleton in Forensic Medicine*. Springfield: Charles C. Thomas.
- Loth, S. & Henneberg, M. 1996. Mandibular ramus flexure: a new morphologic indicator of sexual dimorphism in the human skeleton. *American Journal of Physical Anthropology*. 99:473-485.
- Olivier, G Aaron C, Fully G, Tissier G. 1978. New estimation of stature and cranial capacity in modern man. *Journal of Human Evolution* 7:513-518.
- Morse, D. (ed.). 1978. *Handbook of Forensic Archaeology and Anthropology*. Tallahassee.
- Nienaber, W.C. 1997. Exhumation and Reinterment of Burgher C.G. Naude. *South African Journal of Culture History*. 11(1):123-133.
- Nienaber, W.C. and Steyn, M. 1999. Exhumation and Analysis of the Remains of a Black Native Participant in the Anglo-Boer war (1899-1902), KwaZulu-Natal. *South African Journal of Culture History*. 13(2):94-110.
- Ortner, D.J. & Putschar, W.G.J. 1981. *Identification of pathological conditions in human skeletal remains*. Washington, D.C.: Smithsonian Institution Press.

- Scheuer, L. & Black, S. 2000. *Developmental Juvenile Osteology*. San Diego: Academic Press.
- Steinbock, R.T. 1976. *Paleopathological diagnosis and interpretation*. Illinois: Charles C. Thomas.
- Steyn, M., Nienaber, W.C. and Iscan, M.Y. 2000. Excavation and Retrieval of Forensic Remains. In: Siegel, J.A., Saukko, P.J. and Knupfer, G.C. (eds.). *Encyclopaedia of Forensic Sciences*. Sidcup: Academic Press. 235-242.
- Steyn, M. & Iscan M.Y. 1999. Osteometric variation in the humerus: sexual dimorphism in South Africans. *Forensic Science International*. 106(2):77-85
- Steyn, M., Iscan, M.Y. 1997. Sex determination from the femur and tibia in South African whites. *Forensic Science International* 90:111-119
- Steyn, M., Iscan, M.Y. 1998. Sexual dimorphism of the crania and mandibles of South African whites. *Forensic Science International* 98:9-16
- Steyn, M., Meiring, J.H., Nienaber, W.C. & Loots, M. 2002. Large fontanelles in an early 20th century rural population from South Africa. *International Journal of Osteoarchaeology* 12:291-296.

**APPENDIX A
LOCALITY MAPS**

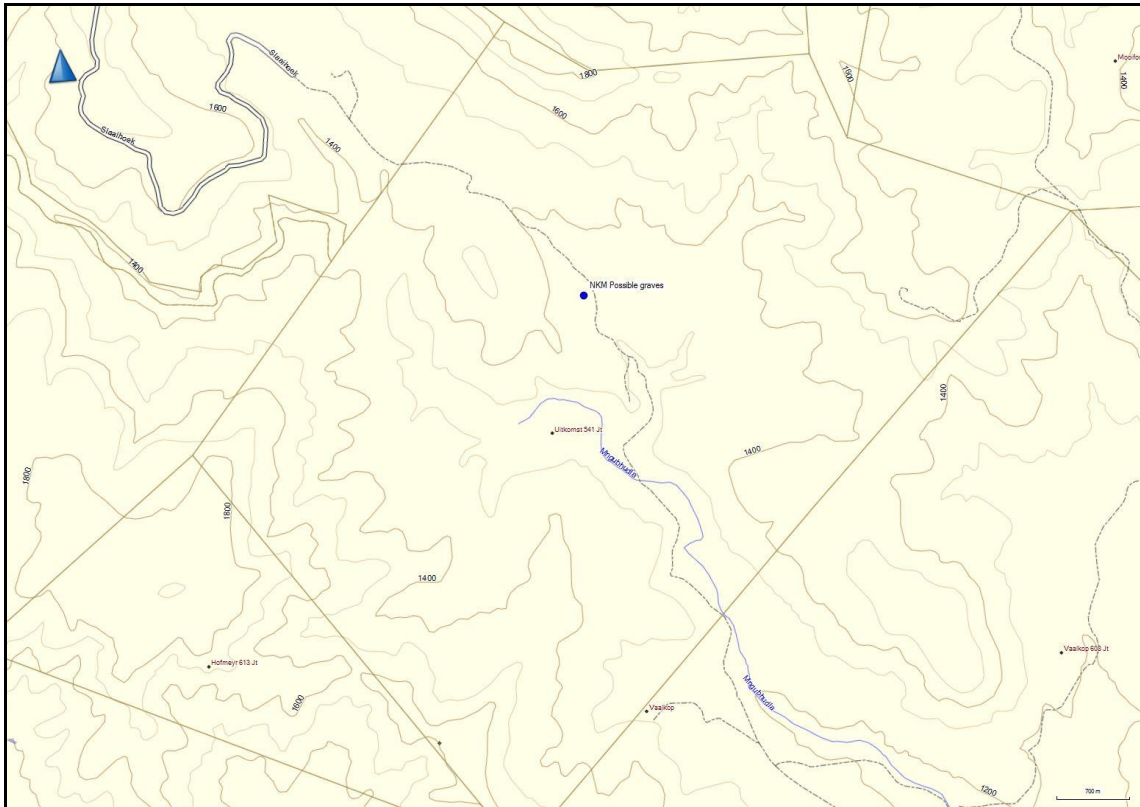


Figure 12 – General Locality Map

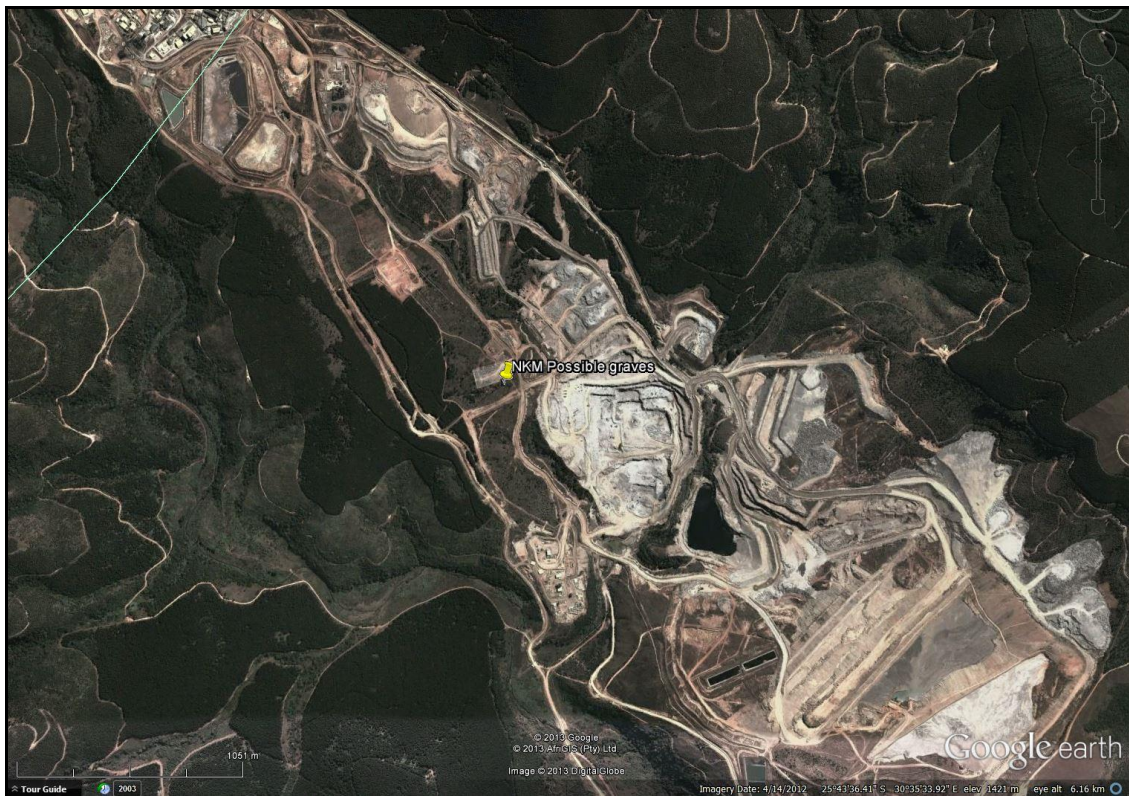
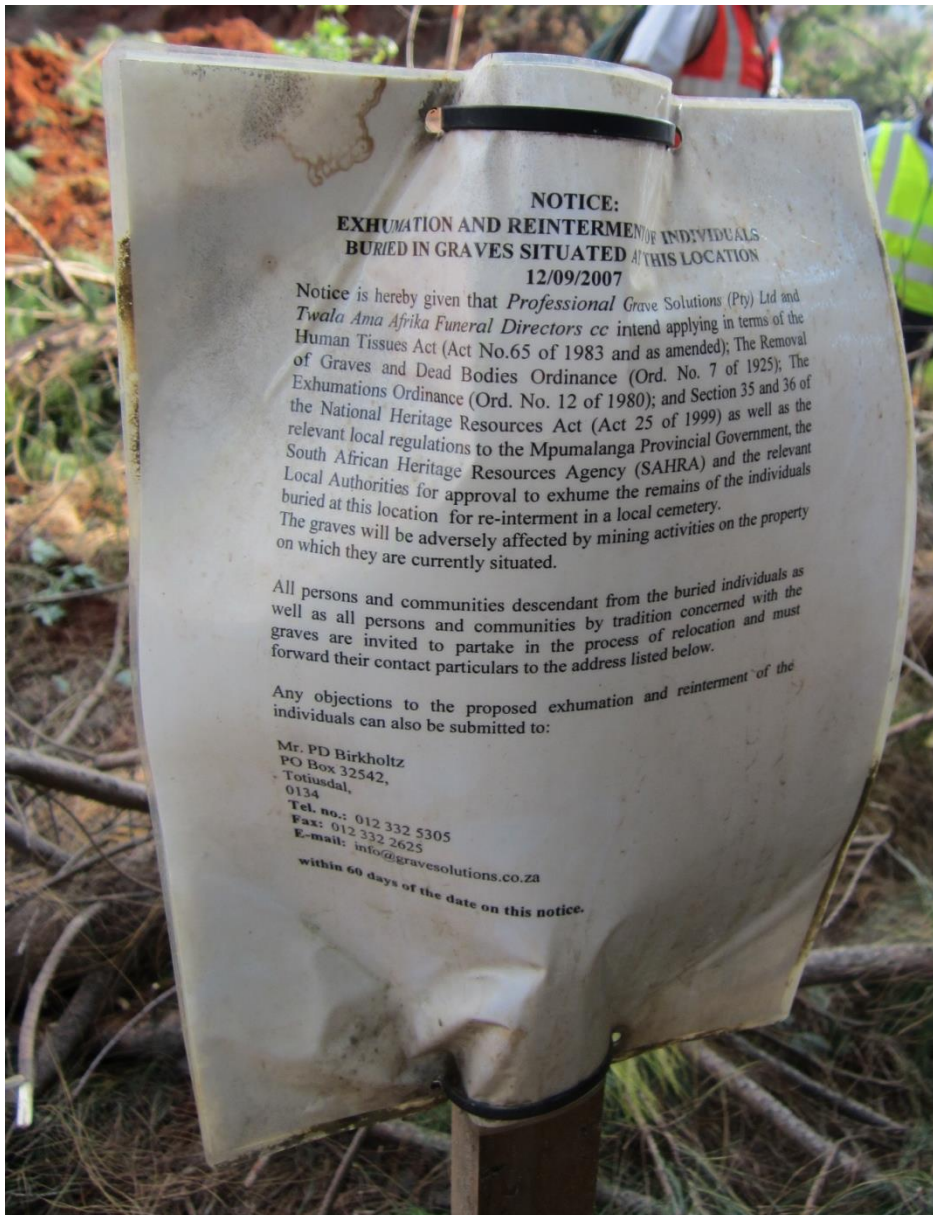


Figure 13 - Approximate location of the cemetery (yellow marker)



Figure 14 – Location of possible graves showing the edge of opencast pit (red line) at the time of the permit application



<p>SS (PTY) LTD hereinafter as "the Applicant", has an application for a SITE application reference number: 28/0001 to be situated on: 52 AND 458 VANDERBIJL-UTH EAST 4 NTSRIVIER CRESENT BILPARK SE 4 BILPARK</p> <p>Use of the application is for the purpose of being granted a licence to engage in petroleum retail activities as contemplated in the application. Arrangements for the application documentation may be obtained by contacting the Controller of Petroleum Products at: (012) 406-7285</p> <p>011-9840 E-mail: petro-olien@energy.gov.za</p> <p>Applications for the issuing of a licence in terms of this application, which must include the application number, must be lodged with the Controller of Petroleum Products within a period of 10 working days from the date of publication of this notice. Such objections must be lodged at the following physical or electronic address:</p> <p>PHYSICAL ADDRESS: THE CONTROLLER OF PETROLEUM PRODUCTS, DEPARTMENT OF ENERGY, 52 VISAGIE STREET, OFFICE OF PAUL KRUGER AND ANNE REYNOLDS, BILPARK SE 4, BILPARK, TOTTUSDAL, 1911, REPUBLIC OF SOUTH AFRICA.</p> <p>ELECTRONIC ADDRESS: THE CONTROLLER OF PETROLEUM PRODUCTS, DEPARTMENT OF ENERGY PRIVATE BAG 110, TOTTUSDAL, 1911, REPUBLIC OF SOUTH AFRICA.</p>	<p>HON. MR MATHABATHA SERIBE. FILE NO: RS 00 153 / 11 Tel: (012) 711-0921/0276 Fax: (012) 711-0939 TO :THE ASSISTANT REGISTRAR MORETELE DIVORCE COURT</p> <p>SATISO: KUMBA LABANGASEKHO NEKUNGCWATJWA KABUSHA KWEMATHUNA LEKANGAMBEKA Satiso sityaniketwa kutsi: I-Professional Grave Solutions (Pty) Ltd nebaka Martins Funerals eBelfast bahlose kufaka sicelo ngekuhambisana ne-Human Tissues Act (Umitsetho Nom. 65 wanga 1983 nangalendlela uchtjyelwe ngayo); Umitsetho Wekususwa Kwemathuna neKukhishwa Kwetlvdvumbu (Umt. Nom. 7 wanga 1925); Umitsetho Wekumba Labangasekho (Umt. Nom. 12 wanga 1980); nesigaba 35 na 36 se-National Heritage Resources Act (Umitsetho Nom. 25 wanga 1999) kanye nemitsethofosimiso yasetjodzim, kuzi: -Balawuli Besifundza sase Mpumalanga, -Sikhungo Sekusetjentiswa Kwemagugu aseNingizimu Afrika (SAHRA); -Kanye netiphatsimandla letifanele tasetjodzim kutsi baniketwe imvume yokumba labangasekho nekungentisa kabusha emathuneni akuleyo ndzawo tinsalela lebanthu lebetingowatjwe emathuneni lekangambeka kuletingozawo letilandzelako: 1.Indzawo yaseNkomati 770 JT (lebeyathwa nge-Uitkomst 541 JT), Esigodzimni sase Carolina, eMpumalanga e-S25.74289 E30.61620 Lamathuna lekangambeka alawutintseka kabi ngalesikhatsi kukhuliswa leMayini yaseNkomati. Bonkhe banthu nemimango lebangacisisekisa kutsi kunemathuna lakhona kulenzawo, bayacelwa kutsi bangenelele kulenchubo yekungcwaba kabusha kantsi kufanele kutsi batumelele imhloningwane yekubatsintsa kulelikheli letibhalwe ngenhla, kungakadluli emalanga talil-14 kusukela ngalolusuku lolutawube kubhalwe kulesatiso: Mnu. HS Steyn, noma Kobus Herbst Professional Grave Solutions (Pty) Ltd Martins Funerals PO Box 32542, Tottusdal, 0134 Inom. yeLucingo: 011 781 3966 Lucingo:086 111 4771, Ifekst: 086 675 8077 Fimeyili: henk@gravesolutions.co.za</p> <p>IN THE REGIONAL COURT FOR THE WESTERN CAPE REGIONAL DIVISION OF NORTH WEST</p>
--	---

<p>OFFICIAL/ PUBLIC NOTICES</p> <p>H GAUTENG HIGH COURT JOHANNESBURG (SOUTH AFRICA)</p> <p>Application of: ABETH GREEFF (N NIEKERK) (223 08 6) and KAREL ANDRE (1 730718 5012 087)</p> <p>NOTICE The applicants intend to apply to the above Honourable Court on 15 July 2013 at 10h00 or as late as Counsel for the respondent is heard, for an order in terms of: 1. In terms of the Deeds Act 136 of 1937 (1) of the Deeds Act 136 of 1937, the period of the original contract concluded by the applicants and dated the 14th July 1999, as amended, is hereby annulled and the three months from the date of the registration of the contract, will in no way prejudice the rights of any creditor of the respondent from the date of the registration of the contract. 2. Granting the respondent and/or alternative relief.</p> <p>OTHERWISE that the respondents intend to apply to the above Honourable Court on 15 July 2013 at 10h00 or as late as Counsel for the applicant is heard, for an order in terms of: 1. In terms of the Deeds Act 136 of 1937 (1) of the Deeds Act 136 of 1937, the period of the original contract concluded by the respondents and dated the 14th July 1999, as amended, is hereby annulled and the three months from the date of the registration of the contract, will in no way prejudice the rights of any creditor of the applicant from the date of the registration of the contract. 2. Granting the applicant and/or alternative relief.</p> <p>NOTICE OF HEARING The matter is set down for hearing on 15 JULY 2013 AT BRAKPAN ON 15 JULY 2013 W KIT-TEG AT 10H00 ATTORNEYS: MRS M. J. STEYN c/o M. J. STEYN & CO EXCHANGE BUILDING 4th Floor, 150 Street Carlton Centre JOHANNESBURG</p> <p>CLERK OF THE COURT: THE CLERK OF THE COURT AND TO: THE CLERK OF THE COURT, DEEDS DIVISION, c/o THE REGISTRAR OF DEEDS, JOHANNESBURG</p>	<p>notice to the Defendant. DATED at HAMMANSKRAAL THIS 12th DAY OF MARCH 2013. ATTORNEYS FOR APPLICANT UP LAW CLINIC: HAMMANSKRAAL BRANCH ST PETERS SEMINARY BUILDING OLD SOUTHPAN ROAD P O BOX 2900 HAMMANSKRAAL, 0400 Ref: Mr MATHABATHA SERIBE. FILE NO: RS 00 MM 306 / 10 Tel: (012) 711-0921/0276 Fax: (012) 711-0939 TO :THE ASSISTANT REGISTRAR MORETELE DIVORCE COURT</p> <p>NOTICE: EXHUMATION AND REBURIAL OF POSSIBLE GRAVES Notice is hereby given that: Professional Grave Solutions (Pty) Ltd and Martins Funerals Belfast intend applying in terms of the Human Tissues Act (Act No. 65 of 1983 and as amended); The Removal of Graves and Dead Bodies Ordinance (Ord. No. 7 of 1925); The Exhumations Ordinance (Ord. No. 12 of 1980); and Section 35 and 36 of the National Heritage Resources Act (Act 25 of 1999) as well as the relevant local regulations, to the: -Mpumalanga Provincial Administration, -the South African Heritage Resources Agency (SAHRA); -and the relevant local authorities for approval to exhume and reinter in a local cemetery the human remains buried in possible graves at the following location: 1. The farm Nkomati 770 JT (formerly Uitkomst 541 JT), District Carolina, Mpumalanga at S25.74289 E30.61620 The possible graves will be adversely affected during the expansion of the Nkomati Mine. All persons and communities who can confirm if graves are present at this site, are invited to participate in the process of relocation and must forward their contact particulars to the address listed below, within 14 days of the date of this notice: Mr. HS Steyn, or Kobus Herbst Professional Grave Solutions (Pty) Ltd Tottusdal, 0134 Tel No: 011 781 3966 Tel: 086 111 4771, Fax: 086 675 8077 E-mail: henk@gravesolutions.co.za</p>
--	--

<p>Model: 079-155-1600</p> <p>WHITE RIVER 2 Houses 6 Bed, 3 bath, pool, d/garage, built-in braai & bar, b/hole. R1.7 mil. See www.private property.co.za Contact: Chris 082-459-3743</p>	<p>(MP REGION) PRIVATE BAG X7279 WITBANK 1035 PHYSICAL ADDRESS: THE REGIONAL DIRECTOR DEPARTMENT OF ENERGY THE PROVINCE HOUSE (3RD FLOOR) CRN BOTHA & KRUGER STREET WITBANK</p> <p>NOTICE NOTICE: EXHUMATION AND REBURIAL OF POSSIBLE GRAVES Notice is hereby given that: Professional Grave Solutions (Pty) Ltd and Martins Funerals Belfast intend applying in terms of the Human Tissues Act (Act No. 65 of 1983 and as amended); The Removal of Graves and Dead Bodies Ordinance (Ord. No. 7 of 1925); The Exhumations Ordinance (Ord. No. 12 of 1980); and Sections 35 and 36 of the National Heritage Resources Act (Act 25 of 1999) as well as the relevant local regulations, to the: a. Mpumalanga Provincial Administration; b. the South African Heritage Resources Agency (SAHRA); c. and the relevant local authorities for approval to exhume and re-burial in a local cemetery the human remains buried in possible graves at the following location: 1. The farm Nkomati 770 JT (formerly Uitkomst 541 JT), District Carolina, Mpumalanga at 825.74289 E30.61620 The possible graves will be adversely affected during the expansion of the Nkomati Mine. All persons and communities who can confirm if graves are present at this site, are invited to participate in the process of relocation and must forward their contact particulars to the address listed below, within 14 days of the date of this notice: Mr. HS Steyn Professional Grave Solutions (Pty) Ltd PO Box 32542, Totiusdal, 0134 Tel: 086-111-4771, Fax: 086-675-8077 E-mail: henk@gravesolutions.co.za or Kobus Herbst Martins Funerals Tel No: 011-781-3966</p> <p>NOTICE NOTICE IN RESPECT OF A LICENCE IN TERMS OF THE PETROLEUM PRODUCTS ACT, 1977 (ACT NO 120 OF 1977) This notice serves to inform parties that may be interested or affected that LIKAZI FILLING STATION CC Herein after referred to as "the</p>
<p>0645 TOWNHOUSES / CLUSTER HOMES</p>	
<p>VYGEBOOM DAM Holiday cottage with boat house to sell, right on waters edge - R350,000 o.n.o Contact: 083-325-0514</p>	
<p>Legals</p> <p>0905 Auctioneers 0910 Public & Legal Notices 0915 Sales In Execution 0920 Tenders 0925 Estates 0930 Liquidations 0935 Town Planning</p>	
<p>0910 PUBLIC / LEGAL NOTICES</p>	

22 Lowvelder

Classifieds

SATISO

SATISO: KUMBA LABANGASEKHO NEKUNGCWATJWA KABUSHA KWEMATHUNA LEKANGAMBEKA Satiso siyaniketwa kutsi: I-Professional Grave Solutions (Pty) Ltd nebaka Martins Funerals eBelfast bahlose kufaka sicelo ngekuhambisana ne-Human Tissues Act (Umtsetfo Nom. 65 wanga 1983 nangalendiela uchitjyelwe ngayo); Umtsetfo Wekususwa Kwemathuna neKukhishwa Kwetidvumba (Umt. Nom. 7 wanga 1925); Umtsetfo Wekumba Labangasekho (Umt. Nom. 12 wanga 1980); nesigaba 35 na 36 se-National Heritage Resources Act (Umtsetfo Nom. 25 wanga 1999) kanye nemisetfosimiso yasetigodzini, ku:
a. Balawuli Besifundza sase Mpumalanga.
b. Sikhungo Sekusetjentiswa Kwemagugu aseNingizimu Afrika (SAHRA);
c. Kanye netiphatsimandla letifanele tasetigodzini kutsi baniketwe imvume yekumba labangasekho nekungenisa kabusha emathuneni akuleyo ndzawo tinsalela tebantfu lebetngcwatjwe emathuneni lekangambeka kuletindzawo letilandzelako:
1. Indzawo yaseNkomati 770 JT (lebayatiwa nge-Uitkomst 541 JT), Esigodzini sase Carolina, eMpumalanga e-S25.74289 E30.61620
Lamathuna lekangambeka atawutsintseka kabi ngalesikhatsi kukhuliswa leMayini yaseNkomati. Bonkhe bantfu nemimango lebangacinisekisa kutsi kunemathuna lakhona kulenzawo, bayacelwa kutsi bangenelele kulenchubo yekungcwaba kabusha kantsi imininingwane yekubatsintsa kulelikheli lelibhalwe ngenhla, kungakaduli emalanga lali-14 kusukela ngalolusuku lolutawube lubhalwe kulesatiso:
Mnu. HS Steyn
Professional Grave Solutions (Pty) Ltd
PO Box 32542, Totiusdal, 0134
Lucingo: 086-111-4771, Ifeksi: 086-675-8077
I-imeyili: henk@gravesolutions.co.za noma Kobus Herbst
Martins Funerals
Inom. yeLucingo: 011-781-3966

NOTICE



IN THE MAGISTRATE'S COURT FOR THE DISTRICT OF NELSPRUIT HELD AT NELSPRUIT
Case number: 858/2013
In the matter between:
DRUM ROCK COUNTRY ESTATE HOME ASSOCIATION, PLAINTIFF
and
SN MAPHANGA, DEFENDANT
NOTICE OF SALE IN EXECUTION
PURSUANT to a judgment by the Magistrate's court NELSPRUIT on 17/04/2013 the under mentioned goods will be sold at 09h00 on 5 JULY 2013 by public auction to be held at the SHERIFF'S OFFICE, 99 JAKARANDA STREET, NELSPRUIT, by the Sheriff of the Magistrate's Court, Nelspruit to the highest bidder for cash:
1 X LOUNG SUITE
DATED at NELSPRUIT on this the 13th day of JUNE 2013.
(Sgd) THOMAS HAYLETT
SIEBRITS
SWANEPOEL & PARTNERS
INC
Suite 601, Pinnacle Building
1 Parkin street
NELSPRUIT
TEL: 013-753-2401
MR SIEBRITS/MARLISE /DEB6066

-AC002412

NOTICE

IN THE NORTH GAUTENG HIGH COURT (REPUBLIC OF SOUTH AFRICA)
CASE NUMBER: 21971/12
In the matter between:
NYATI MEATS CC, PLAINTIFF
and
SA STEYN SAFARIS CC, 1ST DEFENDANT
SCHALK ABRAHAM STEYN, 2ND DEFENDANT
NOTICE OF SALE IN EXECUTION
PLEASE TAKE NOTICE THAT pursuant of a Judgment of the North Gauteng High Court, Pretoria (Republic of South Africa) the property described hereunder will be sold voetstoots, in execution on Wednesday 10 July 2013 at 09:00 at the sheriff's office, 99 JACARANDA AVENUE, WEST ACRES, MBOMBELA in terms of the Conditions of Sale which may be inspected at the offices of the sheriff 99 JACARANDA AVENUE, WEST ACRES, MBOMBELA.
CERTAIN: ALL RIGHT, TITLE AND INTEREST IN RESPECT OF THE PROPERTY SITUATED AT: PORTION 4 SS 52 MOSTERT STREET, MBOMBELA
REGISTRATION DIVISION: MPUMALANGA PROVINCE

D1. SAHRA Permit

Nkomati Mine - Rescue permit application		
Our Ref:		
Enquiries: Itumeleng Masiteng Tel: 012 320 8490 Email: imasiteng@sahra.org.za CaseID: 2599	Date: Thursday June 20, 2013 Page No: 1 PermitID: 358	
PERMIT:		
In terms of Section 36(3) of the National Heritage Resources Act (Act 25 of 1999)		
Permit Holder: Mr Henk Steyn PGS Heritage and Grave Relocation Consultants PO Box 32542 Totiusdal 0134		
Site: Nkomati Mine- Rescue Permit Application (Nkomati Mine - Rescue 1) approximately at 25° 57' 14.0004" S, 30° 34' 0.0012" E		
Conditions:		
<ol style="list-style-type: none">1. The permit is for the rescue exhumation of three possible graves located on the edge of the opencast mining pit at Nkomati Mine, Badplaas, Mpumalanga. If further graves are uncovered the permit will only cover up to ten graves. If more than ten graves are uncovered a new permit application should be lodged on SAHRIS immediately. If the permit holder is not to be present on the site at all times then the heritage authority must be provided with the names and qualifications of the authorised representatives.2. Adequate recording methods as specified in the Regulations and Guidelines pertaining to the National Heritage Resources Act must be employed. Note that the position of all excavations and objects collected must be marked on a plan of site.3. A standard site record form must be lodged on SAHRIS.4. Human remains must at all times be handled with respect and graves should not be disturbed except where unavoidable. The consultation procedures as indicated in the Regulations and the National Heritage Resources Act must be observed as appropriate. The recommendations for removal of graves and exhumations and for re-burial stipulated in SAHRA's Policy 'What to do when graves are uncovered', section 3, must be observed as far as possible. A report on the specimens recovered and their origin must be submitted to the heritage authority annually on or before 20 July 2014 for the duration of the permit.5. All remains recovered, including relics and artefacts, must be kept with the skeletal material and be relocated at Badplaas Municipal Cemetery.6. Reprints of all published papers or copies of theses and/or reports resulting from this work must be lodged with the relevant provincial heritage authority and SAHRA.7. If a published report has not appeared within three years of the lapsing of this permit, the report required in terms of the permit will be made available to researchers on request.8. It is the responsibility of the permit holder to obtain permission from the landowner for each visit, and conditions of access imposed by the landowner must be observed.9. It is the responsibility of the permit holder to fill in excavations and protect sites during and after excavation to the satisfaction of the heritage authority and the landowner.10. The heritage authority shall not be liable for any losses, damages or injuries to persons or properties		
	The South African Heritage Resources Agency Street Address: 111 Harrington Street, Cape Town 8000 * Postal Address: PO Box 4637, Cape Town 8000 * Tel: +27 21 462 4502 * Fax: +27 21 462 4509 * Web: http://www.sahra.org.za	

Nkomati Mine - Rescue permit application



Our Ref:

Enquiries: Itumeleng Masiteng
Tel: 012 320 8490
Email: imasiteng@sahra.org.za
CaseID: 2599

Date: Thursday June 20, 2013
Page No: 2

PermitID: 358

as a result of any activities in connection with this permit.

11. The heritage authority reserves the right to cancel this permit by notice to the permit holder.

This permit is valid from **20/06/2013 to 20/06/2014**.

Itumeleng Masiteng
Heritage Officer
South African Heritage Resources Agency

Mimi Seetelo
Manager:Burial Grounds & Graves Unit
South African Heritage Resources Agency

Additional Info:

Please note that this permit may be suspended should an appeal against the decisions be received by SAHRA within 14 days from the date of the permit. SAHRA may not be held responsible for any costs or losses incurred in the event of the suspension or retraction of this permit.



The South African Heritage Resources Agency

Street Address: 111 Harrington Street, Cape Town 8000 * Postal Address: PO Box 4637, Cape Town 8000
* Tel: +27 21 462 4502 * Fax: +27 21 462 4509 * Web: <http://www.sahra.org.za>

D2. Mpumalanga Health Permit

05 July 2013

**Martin's Funeral
20 Steven Masango Street
Posbus 552
Belfast
1100**

Dear Mr. Kobus Herbst

PERMIT FOR THE EXHUMATION AND RE-INTERMENT OF THE MORTAL REMAINS OF APPROXIMATELY THREE (3) GRAVES FROM THE INKOMATI PROPERTY MINE NEAR BADPLAAS TO BADPLAAS MUNICIPALITY CEMETERY, MPUMALANGA.

Your abovementioned request dated 05 July 2013 refers;

In the powers invested to the Member of the Executive Council of Health and Social development in the 'Mpumalanga Cemeteries, Crematoria, and Exhumation of Bodies Act. 2005' Section 14(1) a permit has been granted for the exhumation and re-interment of the mortal remains of approximately three (3) graves from the Inkomati property mine near Badplaas to Badplaas Municipality cemetery, Mpumalanga.
Register undertaker must handle the exhumation.

1. The proceedings must be taking place in such a manner that no offence is given, nor is there any danger to public health;
2. Under no circumstances may the coffin be opened;



PERMIT FOR THE EXHUMATION AND RE-INTERMENT OF THE MORTAL REMAINS OF APPROXIMATELY THREE (3) GRAVES FROM THE INKOMATI PROPERTY MINE NEAR BADPLAAS TO BADPLAAS MUNICIPALITY CEMETERY, MPUMALANGA.

3. The necessary authorities must be notified at least seven (7) days before the exhumation is to take place;
4. The remains must be sealed in an airtight container and placed in a sturdy non-transparent coffin;
5. Any regulations promulgated by the cemetery-authorities must be complied with;
6. Ms. N Themba (tel 076 849 8840) the Environmental Health Practitioner in the Gert Sibande district must be notified at least seven (7) days before the exhumation takes place.

Yours faithfully



Mrs. C Swart
MANAGER: ENVIRONMENTAL HEALTH

D3. Chief Albert Luthuli Municipality Letter

Chief Albert Luthuli Municipality

The transparent, innovative and developmental municipality that improves the quality of life of its people

OFFICES ALSO AT

Badplaas +27 (0) 17 296 1530
Empuluzi +27 (0) 17 297 1562
Elukwatini +27 (0) 17 298 1542
Ekulindeni +27 (0) 17 299 1522



HEAD OFFICE

P.O Box 24
Carolina 1185
Mpumalanga
Telephone +27 (0) 17 843 4000
Fax +27 (0) 17 843 4001
e-mail mm@albertluthuli.gov.za

Enquiries: Z F Mkhwanazi

Professional Grave Solution
P O Box 32542
TOTIASDALE
0134

11 June 2013

Attention : Henk Steyn

SUBJECT: CONSENT TO EXHUMATION

The municipality hereby gives consent to the reburial of human remains at Badplaas municipal cemetery as stated in the confirmation letter (attached). This consent is based on condition that the entire exhumation and reburial requirement are satisfied.

Hoping you'll find this to be in order.

Yours truly


.....
V N MPILA
MUNICIPAL MANAGER

D4. Letter Notifying SAPS Badplaas

08/07/2013

The Station Commissioner
SAPS Badplaas
Tel: 017 844 1563
Fax: 017 844 1284



FAX TO: 017 844 1284

Dear Sir/Madam,

INTENDED EXHUMATION AND REINTERMENT OF HUMAN REMAINS FROM THREE POSSIBLE GRAVES ON NKOMATI MINE, FARM UITKOMST 541 JT, NEAR BADPLAAS, MPUMALANGA,

BACKGROUND INFORMATION

Our company was appointed by the Nkomati Mine to effect the excavation and possible relocation of several possible grave structures that are located on the edge of its opencast mining pit on the farm Uitkomst 541 JT.

LOCATION OF THE GRAVES

The possible graves are located on the following property that falls under your jurisdiction:

1. Farm Uitkomst 541 JT near Badplaas, Mpumalanga – at least three (or more) possible graves. The identities of any buried individuals are currently unknown. We will be assisted in this regard by Martins funeral – Emalahleni.

PERMITS AND PERMISSIONS

We have received the following permit and permissions from the following institutions:

1. Mpumalanga Provincial Department of Health
2. SA Heritage Resources Agency (SAHRA)
3. The Albert Luthuli Municipality

PROJECT INFORMATION

The graves in question are adversely affected by the expansion of the mining operation of the Nkomati Mine. The specific area where the grave structures are located is on the edge of the open cast mining pit, necessitating the relocation of the possible graves.

We have conducted an extensive social consultation process in order to identify any unknown buried individuals and to obtain permission for exhumation and re-interment from affected families, communities and other *bona fide* interested and affected parties. At the time of writing, no one claiming to be family of the possible graves had contacted us.

To clarify matters we have provisionally allocated the affected graves to the following categories:

Professional Grave Solutions (Pty) Ltd | Reg. No. 2003/008940/07 | Directors: HS Steyn, PD Birkholtz, W Fourie
Tel: 012 332 5305 | Fax: 086 675 8077 | PO Box 32542, Tatiusdal, 0134 | henk@gravesolutions.co.za | 906 Bergarend Street, Waverley, Pretoria
www.gravesolutions.co.za

Graves older than 100 years (Section 35 of Act 25 of 1999):	none
Graves older than 60 years (Section 36 of Act 25 of 1999):	none
Graves of victims of conflict (Section 36 of Act 25 of 1999):	none
Graves of individuals of royal decent (Section 36 of Act 25 of 1999):	none
Graves younger than 60 years that are located outside a registered cemetery (Ordinance 7 of 1925, Section 36 of Act 25 of 1999, Ordinance 12 of 1980):	none
Graves identified by the next of kin but of which the date of death is presently unknown	none
Presently unknown graves/possible graves (Section 36 of Act 25 of 1999):	±3
Total	±3

REBURIAL OF REMAINS

All remains recovered during the relocation exhumation will be reburied in the Badplaas Municipal Cemetery. The exhumations and reburials will take place on 15 and 16 July 2013. The reburial and handling of the remains will be done by Martins Funerals.

We hereby confirm that the exhumations will be conducted on 15 and 16 July 2013.

The contact on the day will be Marko Hutten, mobile number: 076 038 4185.

Please do not hesitate to contact me should you need any further information.

Yours sincerely,



HS Steyn
Managing Director
Professional Grave Solutions (Pty) Ltd