



Greener Tomorrow

Environmental Consultants & Energy Solutions

[Cafe.rapudi@crrenewables.com](mailto:Cafe.rapudi@crrenewables.com) | Tel: 012 433 6524 | Cell: 0824562584

1st and 2nd Floor,  
Building 5 Government Complex  
7 Government Boulevard  
Riverside Park,  
Nelspruit  
1200

Dear Mr Moduka

## NOTIFICATION OF THE PROPOSED NEW BETHAL\_EMZINONI 88KV POWERLINE AND A 40 MVA SUBSTATION

Notification is submitted to SAHRA in terms of Sections 38(1)a of the National Heritage Resources Act.

### PROJECT DETAILS:

<b>Province Name</b>	Mpumalanga		
<b>Project Description</b>	The proposed new Bethal_Emzinoni 88KV powerline and 40 MVA Substation		
<b>Coordinates:</b>	<b>Powerline Coordinates (Option 1)</b>	<b>Latitude</b>	<b>Longitude</b>
	Start Point	26° 29' 8.3115" S	29° 29' 8.5202" E
	Middle Point	26° 25' 46.2463" S	29° 30' 6.0679" E
	End Point	26° 25' 45.2873" S	29° 28' 42.4916" E
	<b>Substation Coordinates (Option 1)</b>	26° 29' 8.3115" S	29° 29' 8.5202" E
<b>Line Length</b>	9.3 KM Approximately (Option 1) / 12.4 KM Approximately (Option 2)		

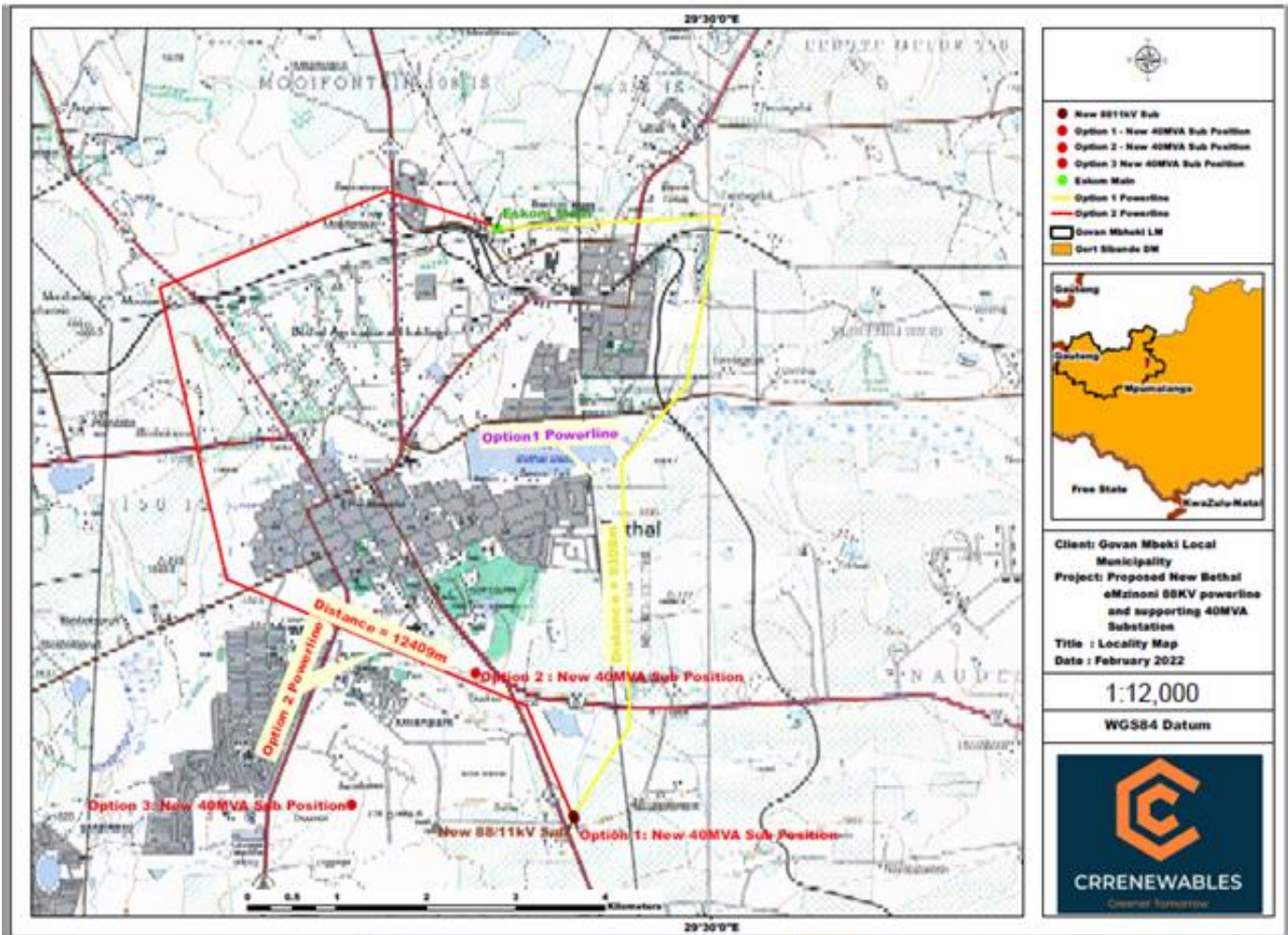
### Confidential

When downloaded from the document management system, this document is uncontrolled and the responsibility rests with the user to ensure it is in line with the authorised version on the system.

No part of this document may be reproduced without the expressed consent of the copyright holder,

CRRENEWABLES Pty Ltd, Reg No: 2019 / 398156 / 07

## LOCALITY MAP



**Confidential**

When downloaded from the document management system, this document is uncontrolled and the responsibility rests with the user to ensure it is in line with the authorised version on the system.

No part of this document may be reproduced without the expressed consent of the copyright holder,



Greener Tomorrow

Environmental Consultants & Energy Solutions

[Cate.rapudi@crrenewables.com](mailto:Cate.rapudi@crrenewables.com) | Tel: 012 433 6524 | Cell: 0824562584

I have enclosed the following specialists reports (HIA and Paleontological) conducted for the study area.

Yours Faithfully,

A handwritten signature in black ink, appearing to read 'Cate Rapudi', written over a horizontal line.

Cate Rapudi

**Environmental Consultant**

Date: 15/ March/ 2022

**Confidential**

When downloaded from the document management system, this document is uncontrolled and the responsibility rests with the user to ensure it is in line with the authorised version on the system.

No part of this document may be reproduced without the expressed consent of the copyright holder,

**CRRENEWABLES Pty Ltd, Reg No: 2019 / 398156 / 07**