

22 November 2017

Ms. Portia Ramalamula
Limpopo Provincial Heritage Resources Authority
Department of Sport, Arts and Culture
21 Biccard Street
Polokwane
0700

Dear Ms. P Ramalamula

RE: DEVELOPMENT NOTIFICATION FOR RAILWAY LINE EXPANSION (MARAKELE LOOP) IN TERMS OF SECTION 38(1) OF THE NATIONAL HERITAGE RESOURCES ACT, 25 OF 1999.

1. Introduction

Unlocking the Waterberg area is a key priority in Government's National Development Plan (NDP) and has been identified as part of Strategic Infrastructure Projects (SIP 1) by the Presidential Infrastructure Coordinating Commission (PICC). Specifically for coal, expansion in rail capacity was identified as a strategic initiative and received much attention from Government as a key driver for the South African economy.

The Transnet Waterberg rail corridor expansion programme between Pyramid South, located in Gauteng Province, and Lephalale, located in the Limpopo Province forms part of the critical programme that will ensure that the country grows its economy. Marakele Loop construction has been identified as one of the projects required to meet the demand.

2. Site Location

The proposed project site is in Marakele along the railway line between Thabazimbi and Lephalale. The proposed site is found between railway kilometer points 27.400 (24°23'6.44"S, 27°26'56.29"E) and 30.700 (24°21'18.22"S, 27°26'57.03"E). The area is approximately 40 kilometers from Thabazimbi Town. Slate 1 below indicates the google map of the site.

Transnet SOC Ltd
Registration Number
1990/000900/30

Carlton Centre
150 Commissioner
Street
Johannesburg
2001

P.O. Box 72501
Parkview, Johannesburg
South Africa, 2122
T +27 11 308 3001
F +27 11 308 2638

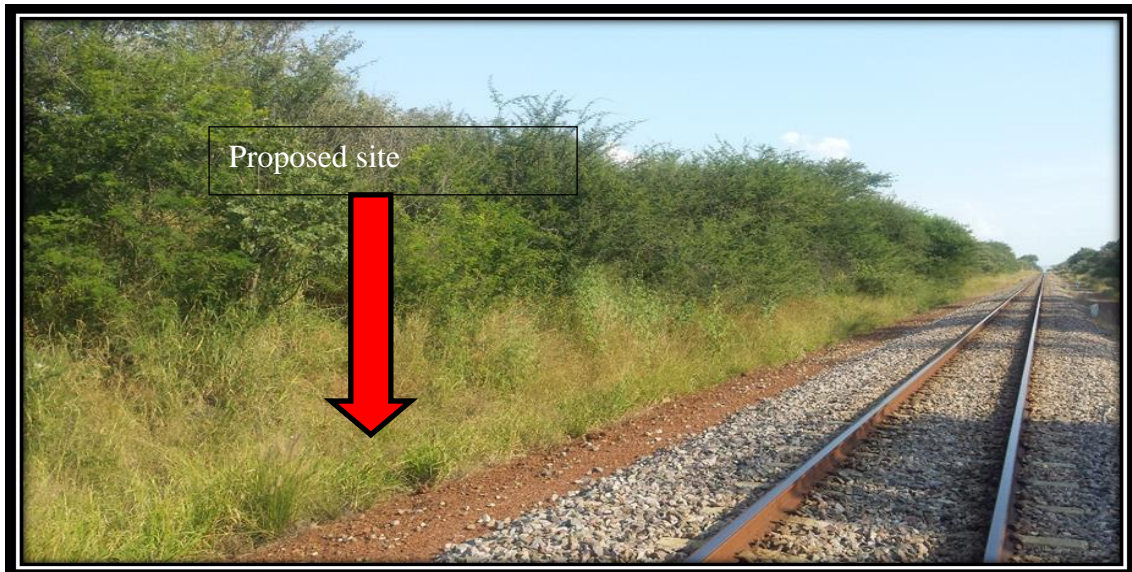
Directors: LC Mabaso (Chairperson) SI Gama* (Group Chief Executive) Y Forbes GJ Mahlalela PEB Mathekga ZA Nagdee VM Nkonyane BG Stagman GJ Pita* (Chief Financial Officer)
*Executive

Group Company Secretary: NE Khumalo

www.transnet.net



Slate 1: Google map of Marakele Loop

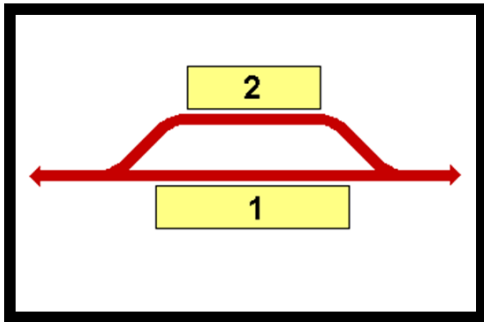


Slate 2: Proposed site for the Loop

3. Project Scope

The proposed project is the construction of a new Marakele Loop for 3.3 km next to the existing railway line between Thabazimbi and Lephalale.

A loop is a place on a railway line where trains travelling in opposite directions can pass each other. A loop is usually double ended and connected to the main track at both ends as depicted in Slate 3 below.



Slate 3: Railway Loop

4. Construction works include the following:

4.1 Civil

Construction of a 3.3 kilometer long loop of 20t axle loading with formation layers according to standard Transnet specifications. The construction of the new loop will traverse through an embankment which ranges from $\pm 0.5\text{m}$ to $\pm 2\text{m}$ high between Km points 27.400 to 30.700.

3.2 Perway

The perway scope include the installation of 3.3 kilometer track with similar design to that depicted in Slate 2.

3.3 Signalling

Install a localized remote control system to enable the Train Driver to remotely operate tangential point sets on both sides of the loop. The system uses a radio control to detect train presence.

3.4 Structures

There is a total of five (5) box culverts and one (1) underpass for animals that will be extended in this loop. This railway line was constructed in 1980 together with the associated structures. Slate 2 indicates the proposed location of the new infrastructure/loop.

5. Other Relevant permits, Licenses and Environmental Authorizations

After thorough site investigation it has been established that no environmental permits, authorizations or licenses are required by the development of this loop.

The site was visited in March 2017 and no heritage resources were identified on site that may be impacted during construction. Should any artefacts be discovered during

construction Transnet shall ensure such resources are appropriately managed as per its Standard Environmental Specification (attached as Annexure A).

6. Heritage Resource Management

Section 38 (1) states that "... any person who intends to undertake a development categorised as-

The construction of a road, wall, powerline, pipeline, canal or other similar form of linear development or barrier exceeding 300m in length;

must at the very earliest stages of initiating such a development, notify the responsible heritage resources authority and furnish it with details regarding the location, nature and extent of the proposed development."

In accordance with Section 38(1) of the National Heritage Resources Act, 25 of 1999, Transnet herewith notifies the Limpopo Provincial Heritage Resources Authority of the aforementioned proposed development and request your response in terms of Section 38(2).

Yours Sincerely,



Stehan Boucher

Environmental Manager
Transnet Group Capital

Kindly direct any enquires to:

Mkateko Marilele

Email: Mkateko.marilele@transnet.net

Tel: 011 308-4237