

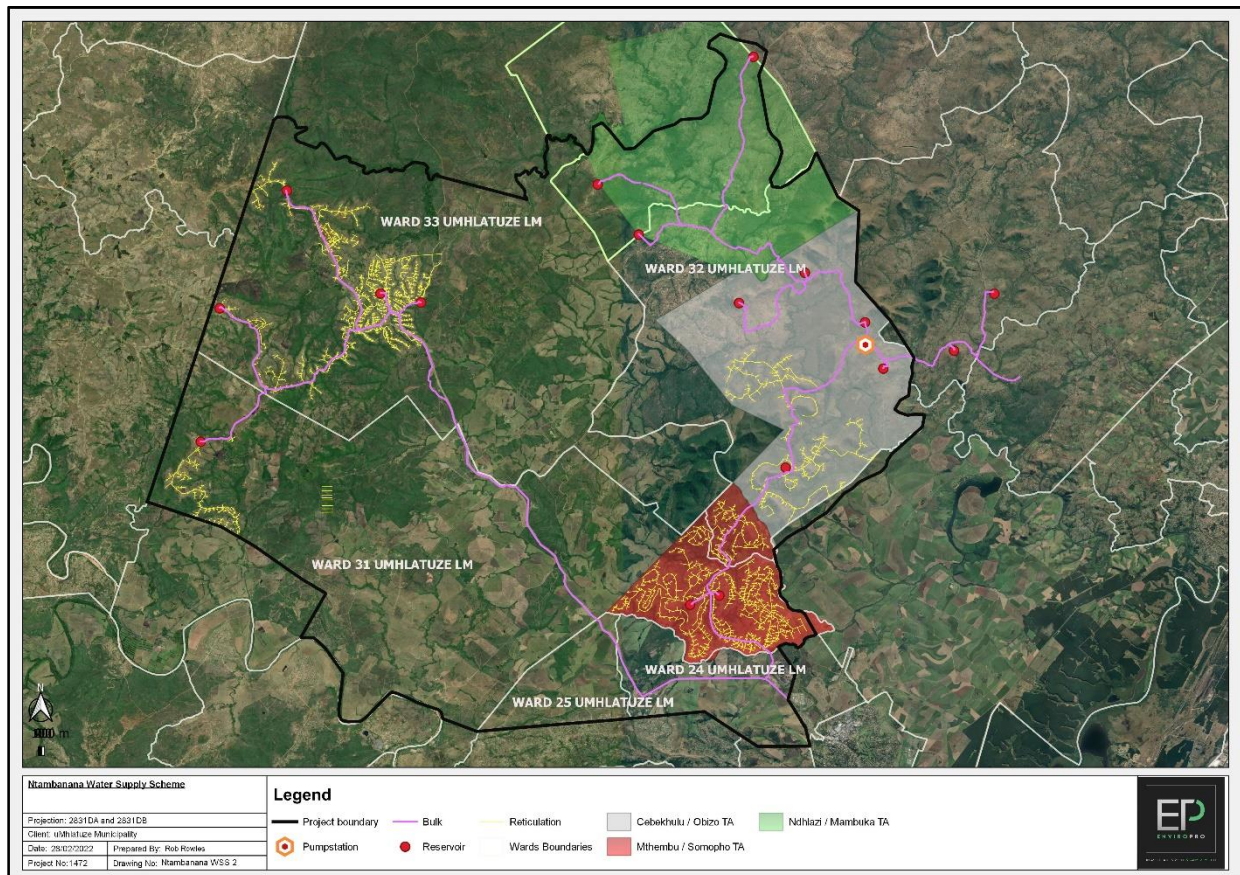
ISAZISO SESICELO SOKUGUNYAZWA KWEZEMVELO KANYE NESOKUSEBENZA ENDAWENI ENAMANZI

NOTICE OF APPLICATION FOR ENVIRONMENTAL AND WATER USE AUTHORISATION

Lapha kukhishwa isaziso sokuthi uMasipala iCity of Mhlathuze ufaka isicelo sokugunyazwa kwezeMvelo ngokwenza uCwango oluyisisekelo eMnyangweni wezokuThuthukiswa koMnotho, ezokuVakasha kanye nezeMvelo KwaZulu-Natal (EDTEA) ngokomthetho Wokuphathwa Kwemvelo Kazwelonke, uMthetho No.107 ka-1998 njengo uchitshiyelwe (NEMA). Isicelo sokugunyaza ukusebenza endaweni enamanzi ngokwesigaba sama-40 soMthetho Wamanzi Kazwelonke, uNombolo 36 ka-1998 (NWA) sizophinde sifakwe kuMnyango Wezamanzi Nenhlanzeko (DWS). Bonke Abanentshisekelo Nabathintekayo (I&APs) bayamenywa ukuba babhalise ne-EnviroPro zingakapheli izinsuku ezingu-60 kusukela osukwini lwalesi saziso ukuze bathole ulwazi olwengeziwe.

Notice is hereby given that The uMhlathuze Local Municipality is lodging an application for Environmental Authorisation through a Basic Assessment with the KZN Department of Economic Development, Tourism and Environmental Affairs (EDTEA) in terms of the National Environmental Management, Act No.107 of 1998 as amended (NEMA). A Water Use Authorisation application in terms of section 40 of the National Water Act, No.36 of 1998 (NWA) will also be lodged with the Department of Water and Sanitation (DWS). All Interested and Affected Parties (I&APs) are invited to register with EnviroPro within 60 days of the date of this notice for further information.

The Ntambanana Water Supply Scheme Overview.



Iminingwane Yeprojekthi: uMasipala iCity of Mhlathuze uhlongoza ukwakha iNtambanana Water Supply Scheme (WSS) engaphansi kukaMasipala wendawo iCity of uMhlathuze, kuMasipala wesiFunda iKing Cetshwayo. Ukugunyazwa Kwezemvelo Ngenqubo Yokuhlola Eyisisekelo kuyadingeka ukuze kugcwaliswe indawo/umsele kwindawo engaphezu kuka-10m³ kumgudu wamanzi kanye nokwakhiwa kwengqalasizinda engaphezu kuka-100m² phakathi kwa-32m kwindawo egeleza amanzi. Kudingeka Ukugunyazwa Kokusebenza Ebdaweni enamanzi ngokweSigaba 21 (c) & (i) se-NWA nganoma yimuphi umsebenzi ozoshintsha imibhede, amabhange, nokugeleza kwamanzi kuhlanganisa nemisebenzi engaphakathi kwa-500m endaweni eyixhaphozi.

Project Details: The City of uMhlathuze propose to construct the Ntambanana Water Supply Scheme (WSS) located in the City of uMhlathuze Local Municipality, King Cetshwayo District Municipality. Environmental Authorisation through a Basic Assessment Process is required for the infilling of more than 10m³ of material within a watercourse and placing more than 100m² of infrastructure within 32m of a watercourse. A Water Use Authorisation is also required in terms of Section 21 (c) & (i) of the NWA for any activity that will alter the beds, banks, and flow of a watercourse including activities that are located within 500m of a wetland

More information about this project can be obtained from this person
Eminye iminingwane mavelana nale projekthi ingatholakala kulo muntu:



Abantu okuxhunywana nabo: Rob Rowles
Ucingo: 031 765 2942
Ifekisi: 083 309 9211
WhatsApp No. 064 653 3051
I-meyili: rob@enviropro.co.za
Usuku: April 2022

