

NEW DWELLING HOUSE ON SUBD. A OF 165 BLOCK A:

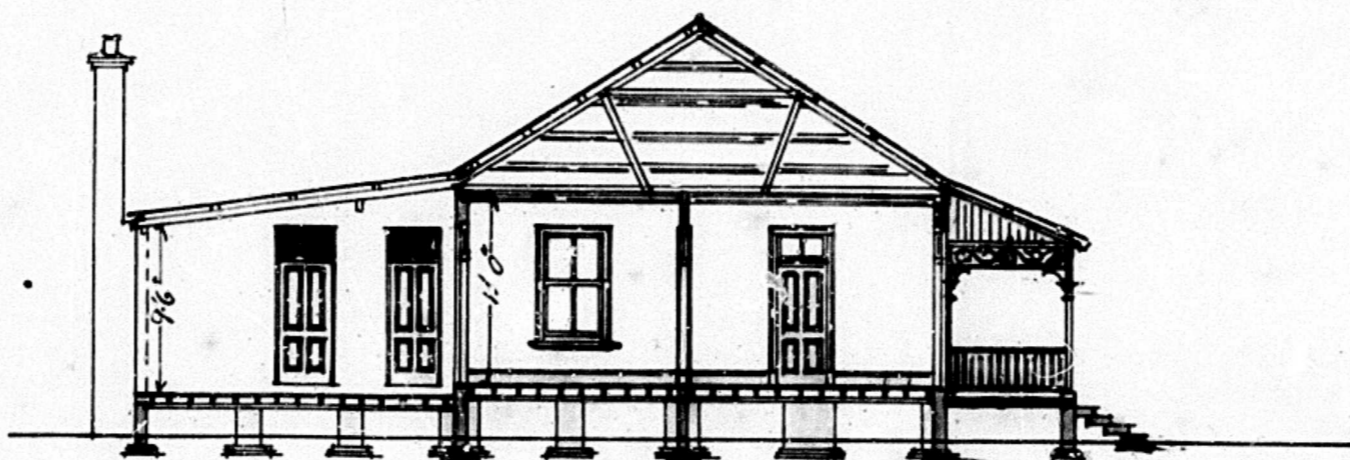
113 9TH AVENUE, GREYVILLE.

FOR MR. A. KERR. W. WICKES.

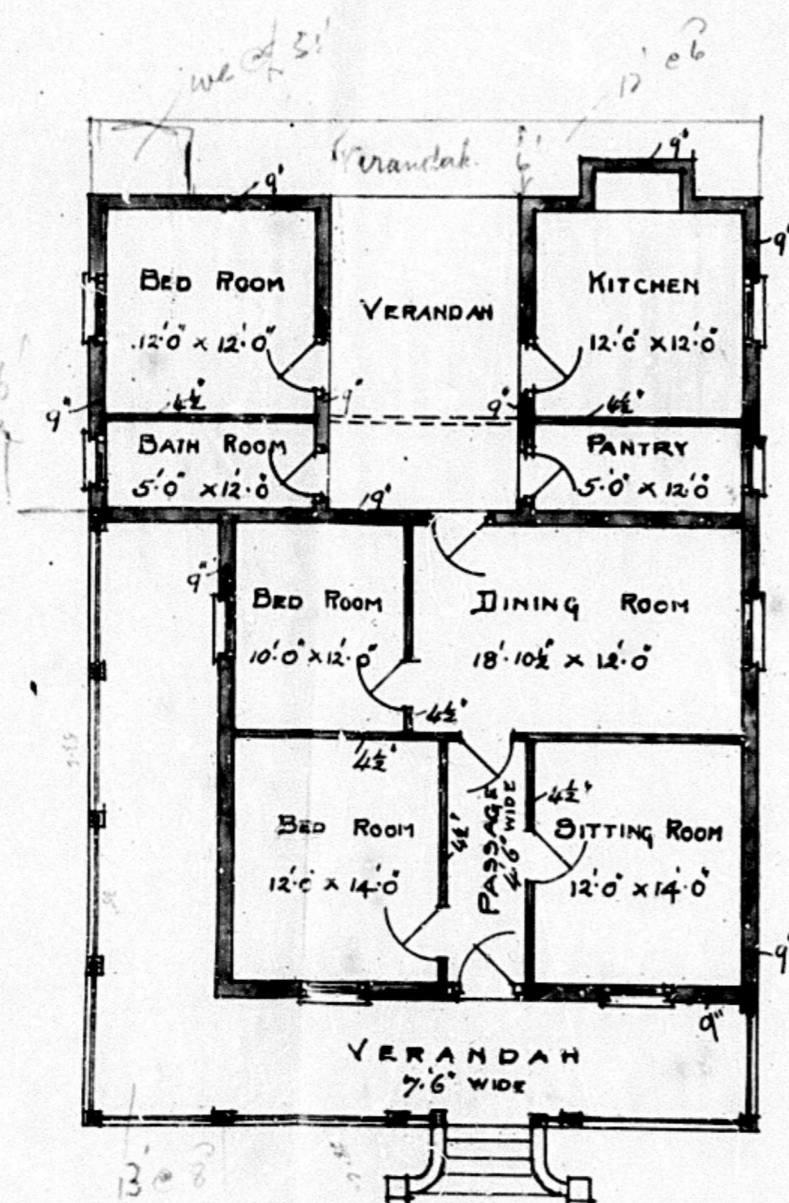
SCALE 8 FEET = 1 INCH



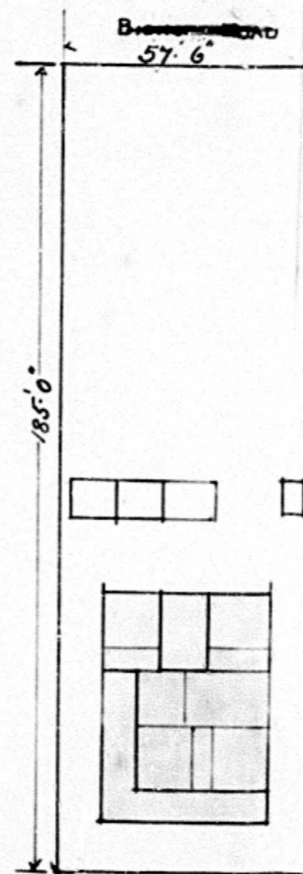
ELEVATION



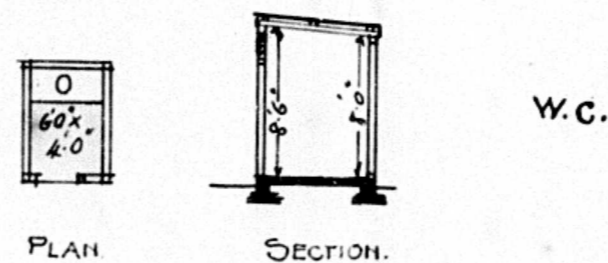
SECTION



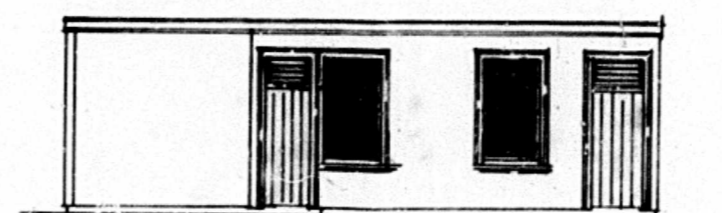
PLAN.



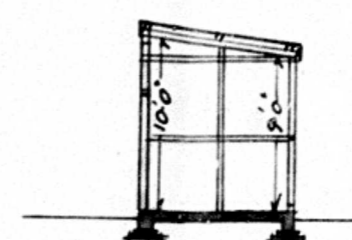
9TH AVENUE
BLOCK PLAN
1/32 SCALE



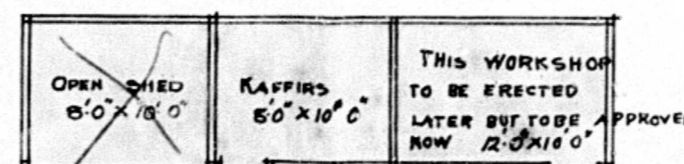
W.C.



ELEVATION



SECTION



PLAN.

KAFFIR HOUSE
ETC.

