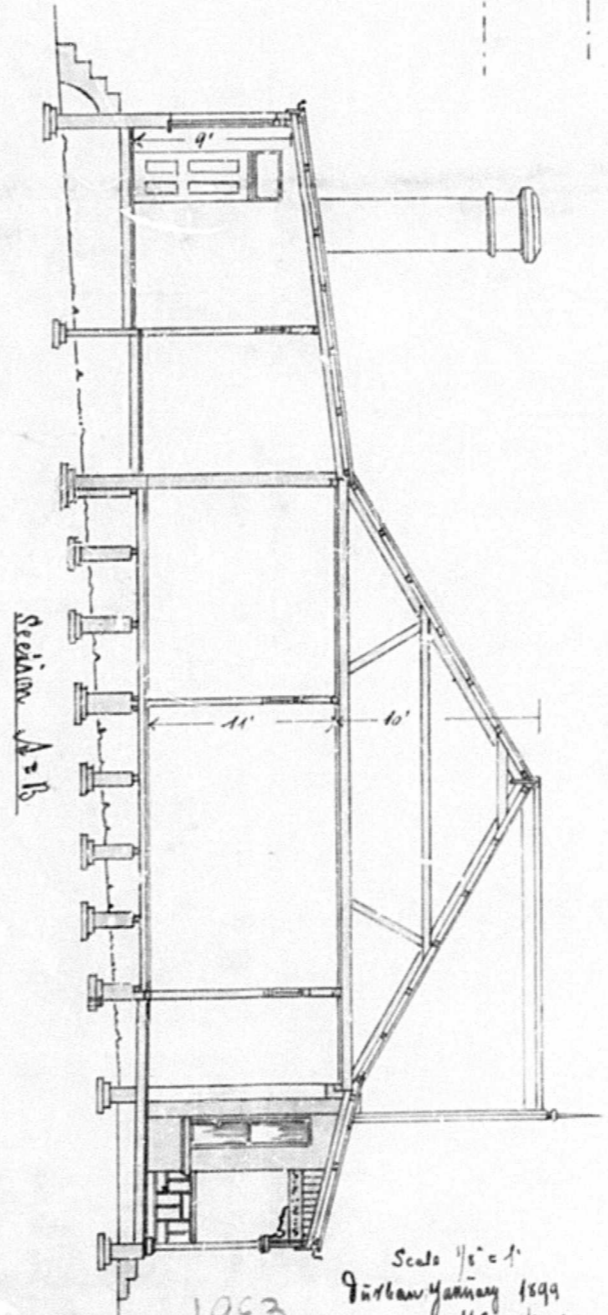
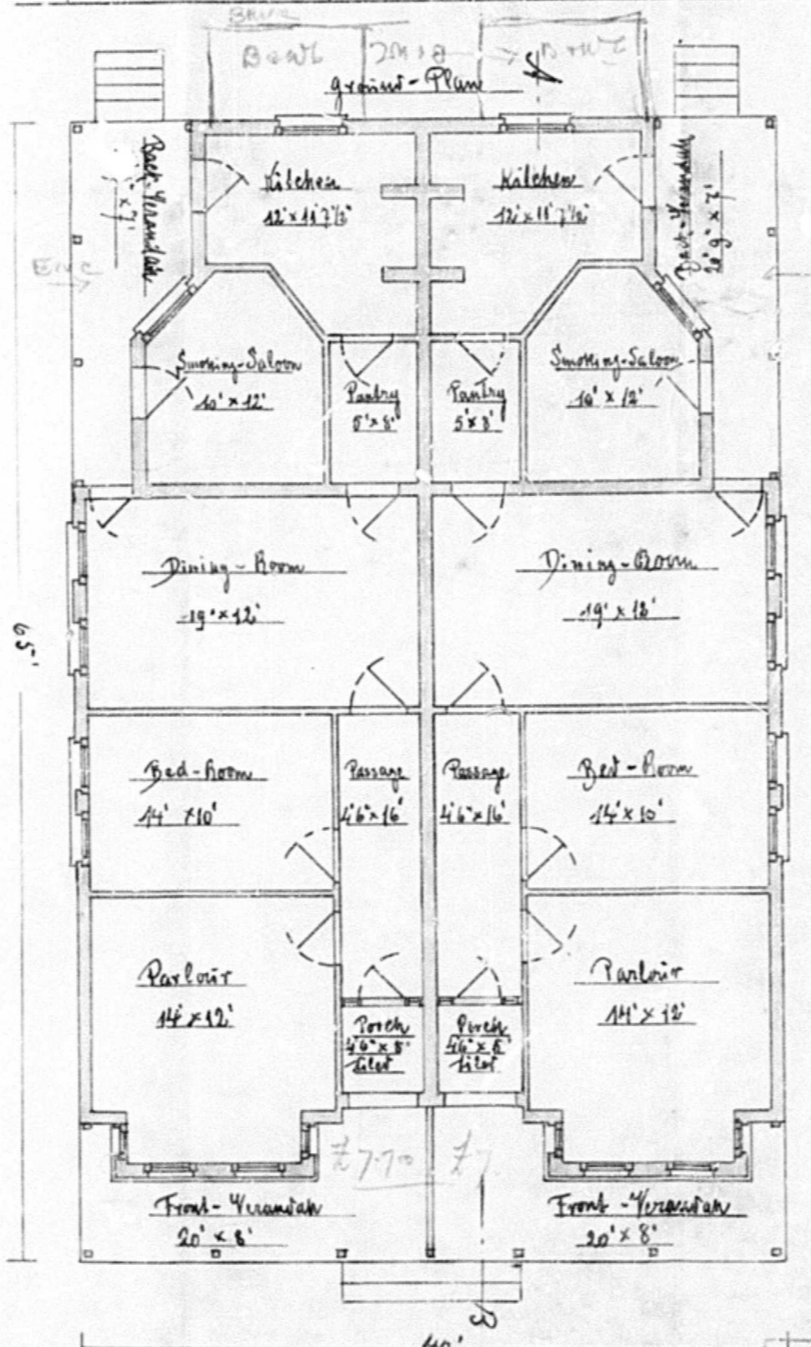
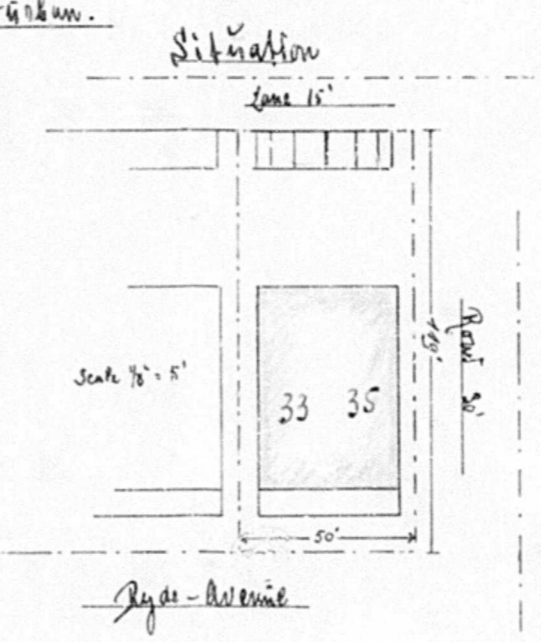
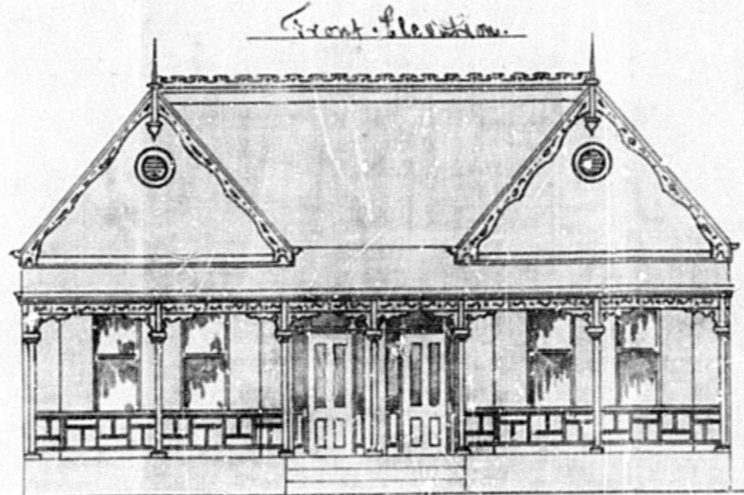


One semi-detached Cottage in Right-Avenue

J. Landon Esq: Durban.

5/7c C

NO 35
Bryce
W.D.N. Esq. 11/9
2-13-10 N.P. 10



DURBAN CORPORATION
APPROVED
1908
J. Landon
1899

Scale 1/2" = 1"
J. Landon Esq. 11/9
1/10/10