

# APPENDIX A

---


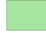








## LOCALITY MAPS



Regional Locality:  
Oslaagte Solar 3

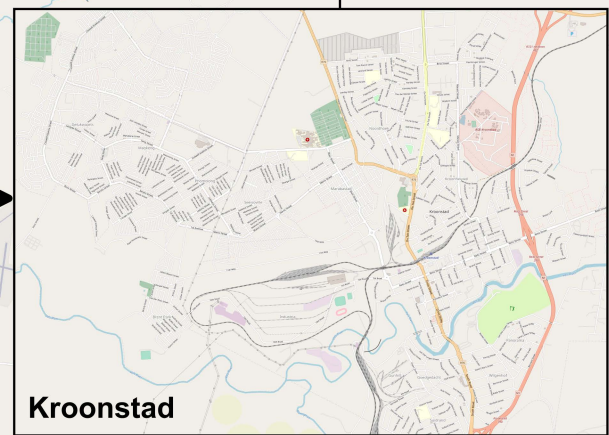
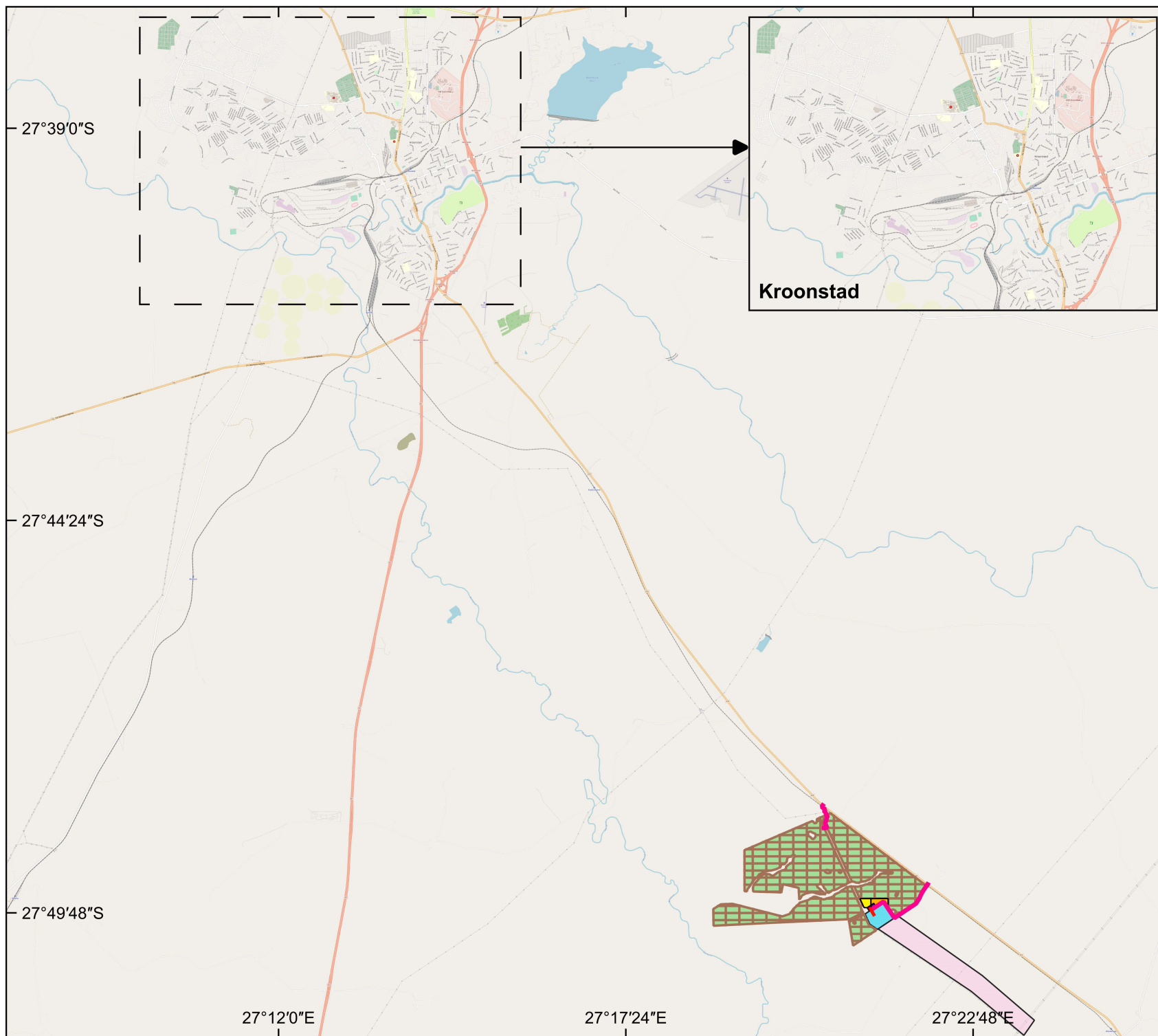
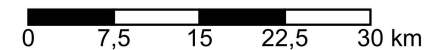
### Legend

#### KROONSTAD SOUTH PV CLUSTER: Oslaagte Solar 3

-  Facility Substation
-  PV Array
-  Laydown
-  Buildings
-  BESS
-  Internal Roads
-  Access Roads
-  132 kV OHL
-  400/132 kV MTS
-  400 kV LILO Corridor





Scale: 1: 150000













Layout:  
Oslaagte Solar 3

**Legend**

Cadastral

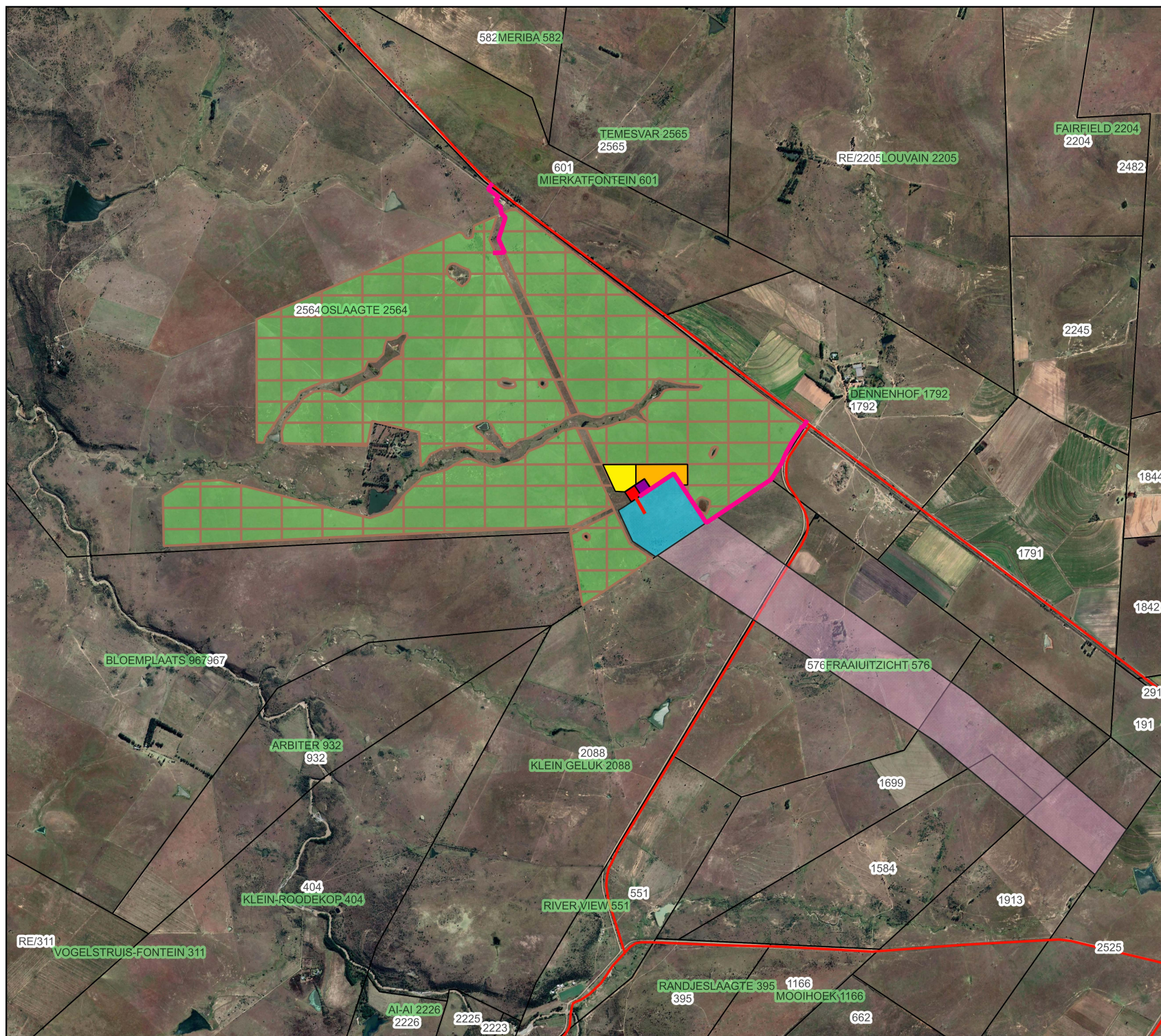
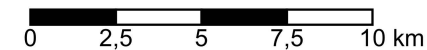
-  Parent Farm
-  Farm Portion

KROONSTAD SOUTH PV CLUSTER: Oslaagte Solar 3

-  Facility Substation
-  PV Array
-  Laydown
-  Buildings
-  BESS
-  Internal Roads
-  Access Roads
-  132 kV OHL
-  400/132 kV MTS
-  400 kV LILO Corridor



Scale: 1: 50000





Kroonstad South PV Cluster

Layout - Oslaagte Solar 3 (Alternative 2)

### Legend

#### Cadastral

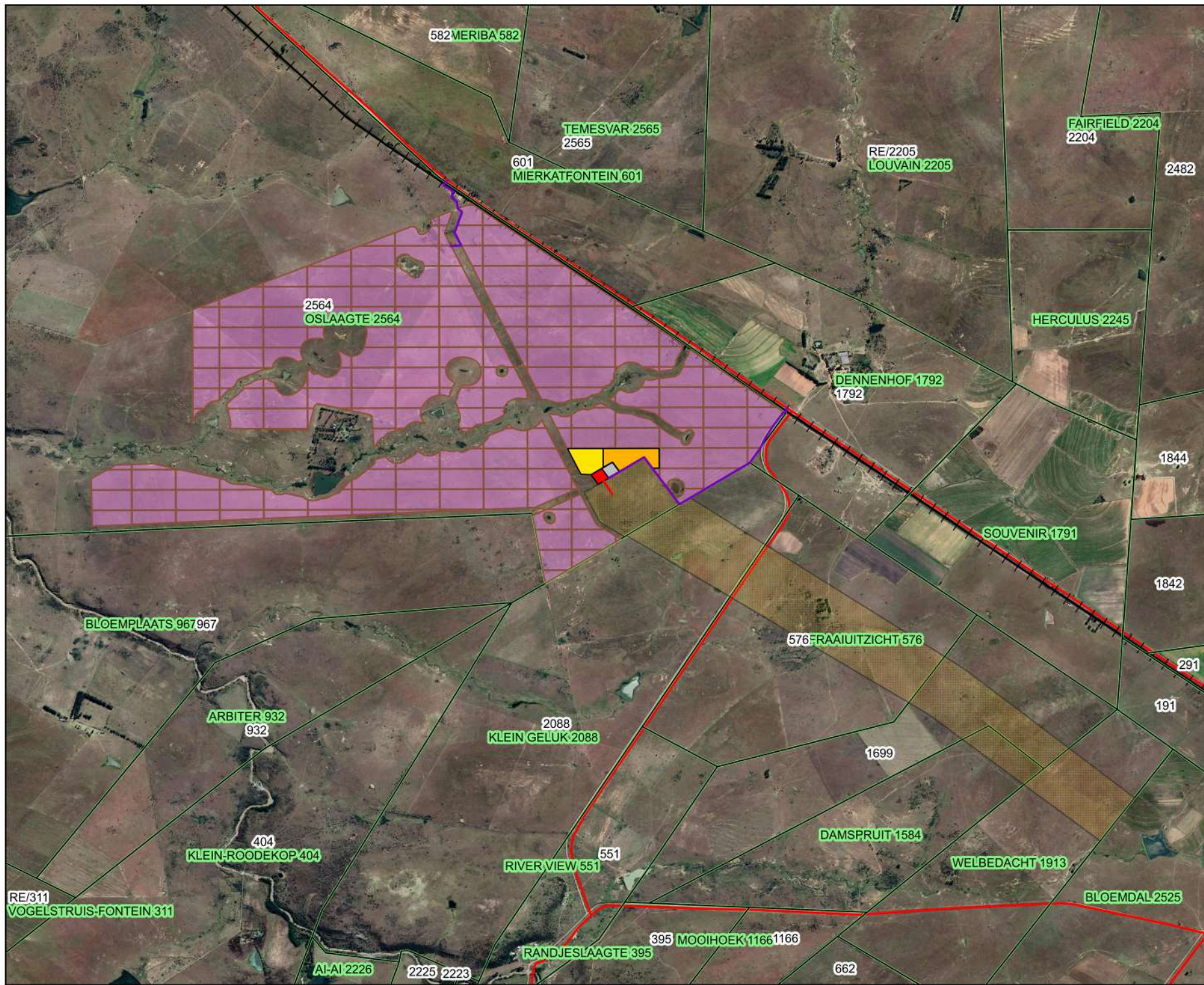
- Parent Farm
- Farm Portion
- SA Roads
- Railways

#### KROONSTAD SOUTH PV CLUSTER: Oslaagte Solar 3 (Alternative 2)

- Facility Substation
- PV Arrays
- Laydown
- Buildings
- BESS
- Grid Connection
- Internal Roads
- Access Roads
- 132 kV OHL



Scale: 1: 30 000





Kroonstad South PV Cluster

Combined Sensitivity - Oslaagte Solar 3 PV (400kV Corridor)

**Legend**

5 km Protected Area Buffer

Serendipity Private Game Reserve

Combined Sensitivity

High

Medium

Low

Medium Sensitivity & 32 m Watercourse Buffer

Heritage Sensitivity

Heritage Sensitivity (30m Buffer)

Oslaagte Solar 3 PV

PV Array

400 kV LILO Corridor

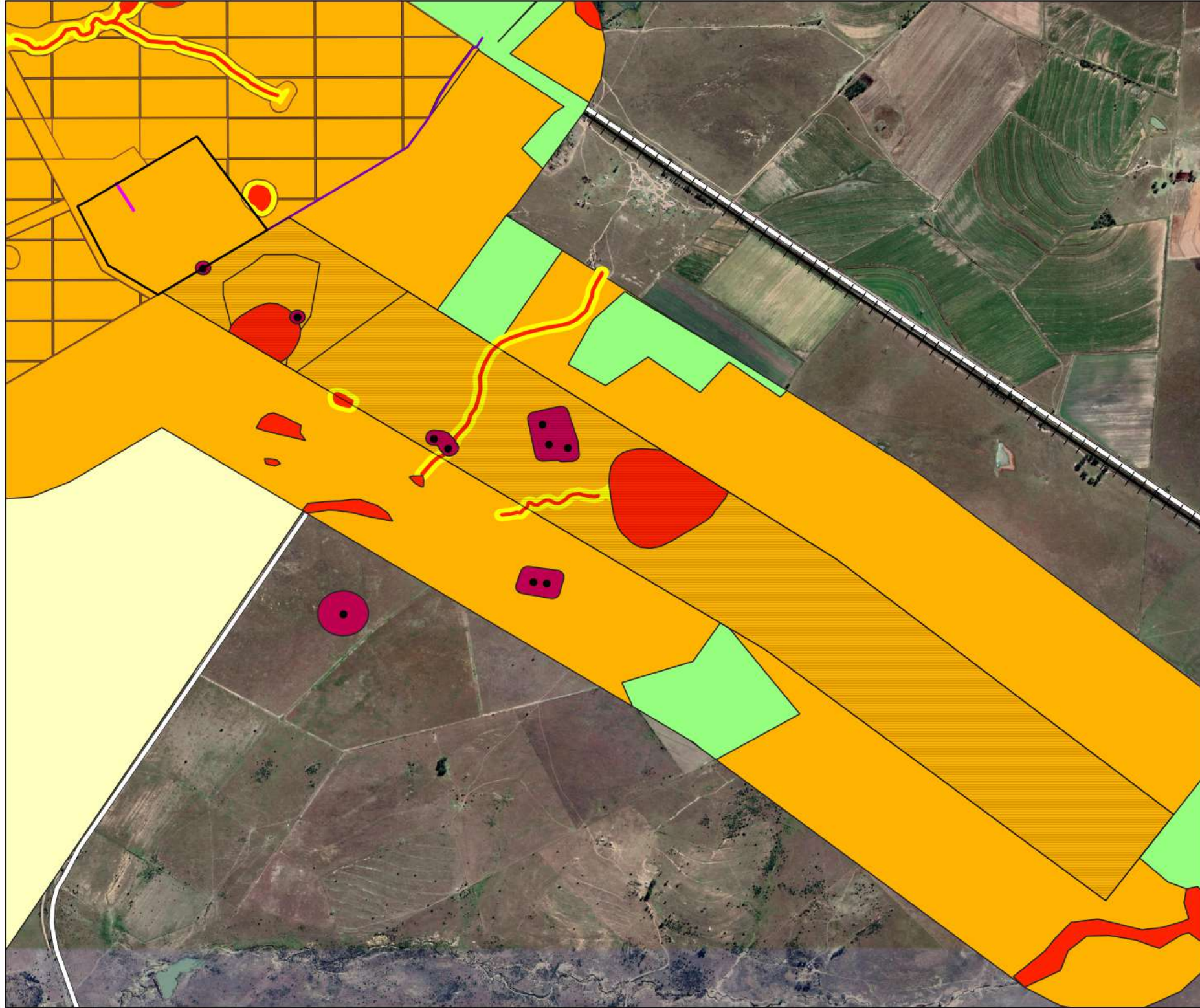
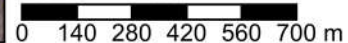
132kV OHL

SA Roads

Railways




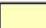


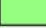








Scale: 1: 15 000




Kroonstad South PV Cluster

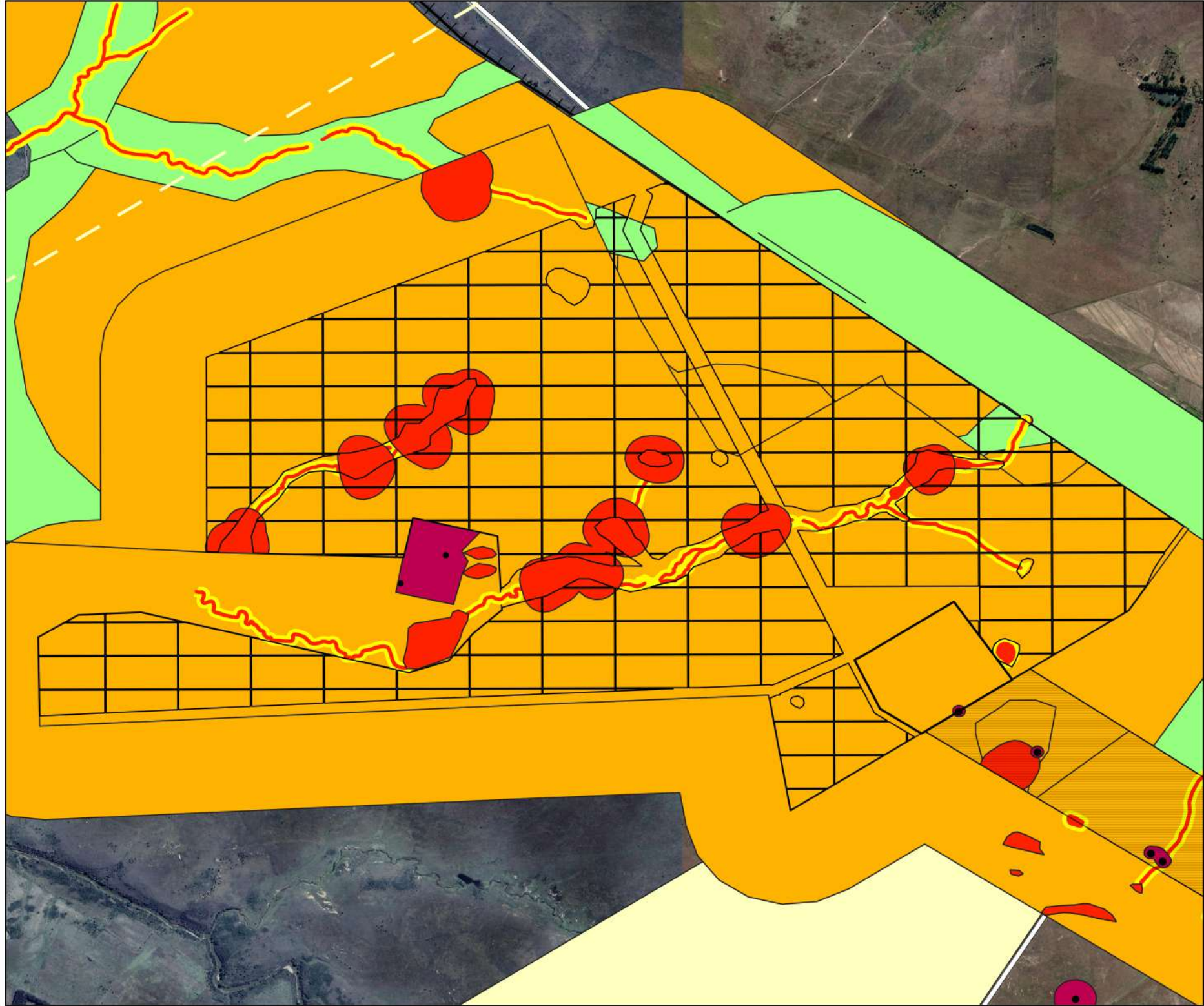
Combined Sensitivity - Oslaagte Solar 3 PV (Alternative 1)

**Legend**

-  5 km Protected Area Buffer
-  Serendipity Private Game Reserve
- Combined Sensitivity**
-  High
-  Medium
-  Low
-  Medium Sensitivity & 32 m Watercourse Buffer
-  Heritage Sensitivity
-  Heritage Sensitivity (30m Buffer)
- Oslaagte Solar 3 PV**
-  PV Array
-  400 kV LILO Corridor
-  132kV OHL
-  SA Roads
-  Railways




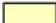











Scale: 1: 18 000  
  
 0 140 280 420 560 700 m



Kroonstad South PV Cluster

Combined Sensitivity - Oslaagte Solar 3 PV (Alternative 2)

**Legend**

-  5 km Protected Area Buffer
-  Serendipity Private Game Reserve
- Combined Sensitivity**
-  High
-  Medium
-  Low
-  Medium Sensitivity & 32 m Watercourse Buffer
-  Heritage Sensitivity
-  Heritage Sensitivity (30m Buffer)
- Oslaagte Solar 3 PV**
-  PV Array
-  400 kV LILO Corridor
-  132kV OHL
-  SA Roads
-  Railways



Scale: 1: 18 000  
 0 140 280 420 560 700 m

