



PHOTOGRAPHIC REPORT FOR
PROPOSED INTERNAL ADDITIONS
AND ALTERATIONS TO FLAT 112
CASABLANCA (OVINGTON COURT
SS) AT:
20 ERSKINE TERRACE, POINT, 4001.
(PORTION 58 OF ERF 10054
DURBAN)



Figure 1. Image illustrating the flat entrance, existing open plan dining/lounge and existing bathroom entrance. The image. The existing bathroom door shall be bricked up and the entrance to the new toilet shall be adjacent, as shown on the drawing.



Figure 2. Image illustrates the existing lounge/dining as well as the passage, entrance to the bedroom and the existing kitchen (which shall be converted to a new en-suite, per the plan)



Figure 3. Image illustrates the window and view of the exterior (viewing Erskine Terrace). All works are internal, no external works shall be undertaken.



Figure 4. Image illustrates the bedroom and view of the exterior (viewing Erskine Terrace).



Figure 5. Image illustrates the entrance to the bedroom looking into the passage. The existing bathroom door can be seen, which shall be bricked up according to the plan.



Figure 6. Image illustrates additional view of existing bedroom.



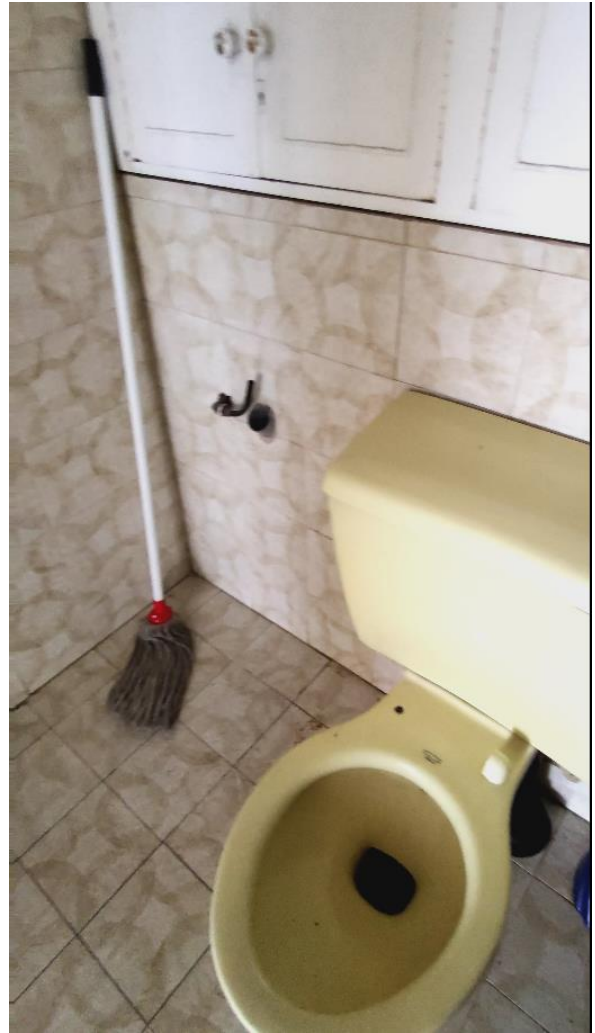
Figures 7 & 8. Image illustrates view of existing kitchen. The kitchen shall be removed and a new en-suite shall be proposed. The cupboard illustrated on the right shall be removed, and the new entrance to the en-suite shall be located herein.



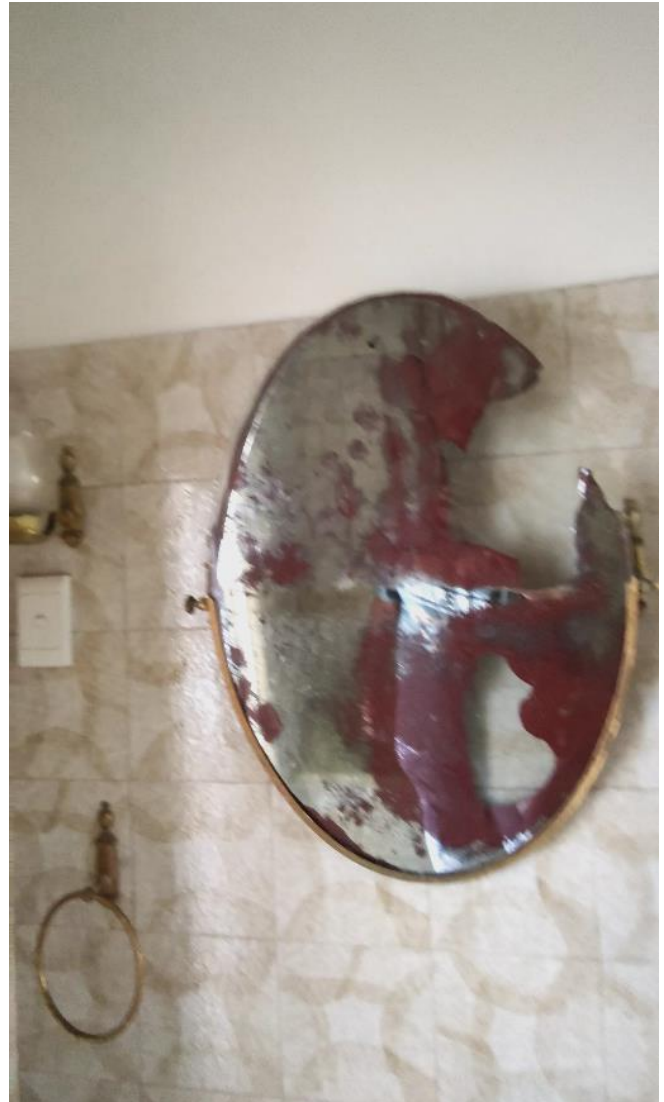
Figures 9 & 10. Image illustrates view of existing kitchen and its entrance. The kitchen shall be removed and converted to a new bedroom with en-suite as shown on the plan. The existing cupboards have swelled up over time and the tiles have become too slipper. Renovations will therefore be required to ensure safety.



Figures 11 & 12. Image illustrates the existing bathroom. The image shows the condition is bad and unusable, and will require renovations.



Figures 12 & 13. Image illustrates the existing bathroom. The toilet is currently broken and unused.



Figures 14 & 15. Image illustrates the existing bathroom and the bad conditions of the existing utilities.