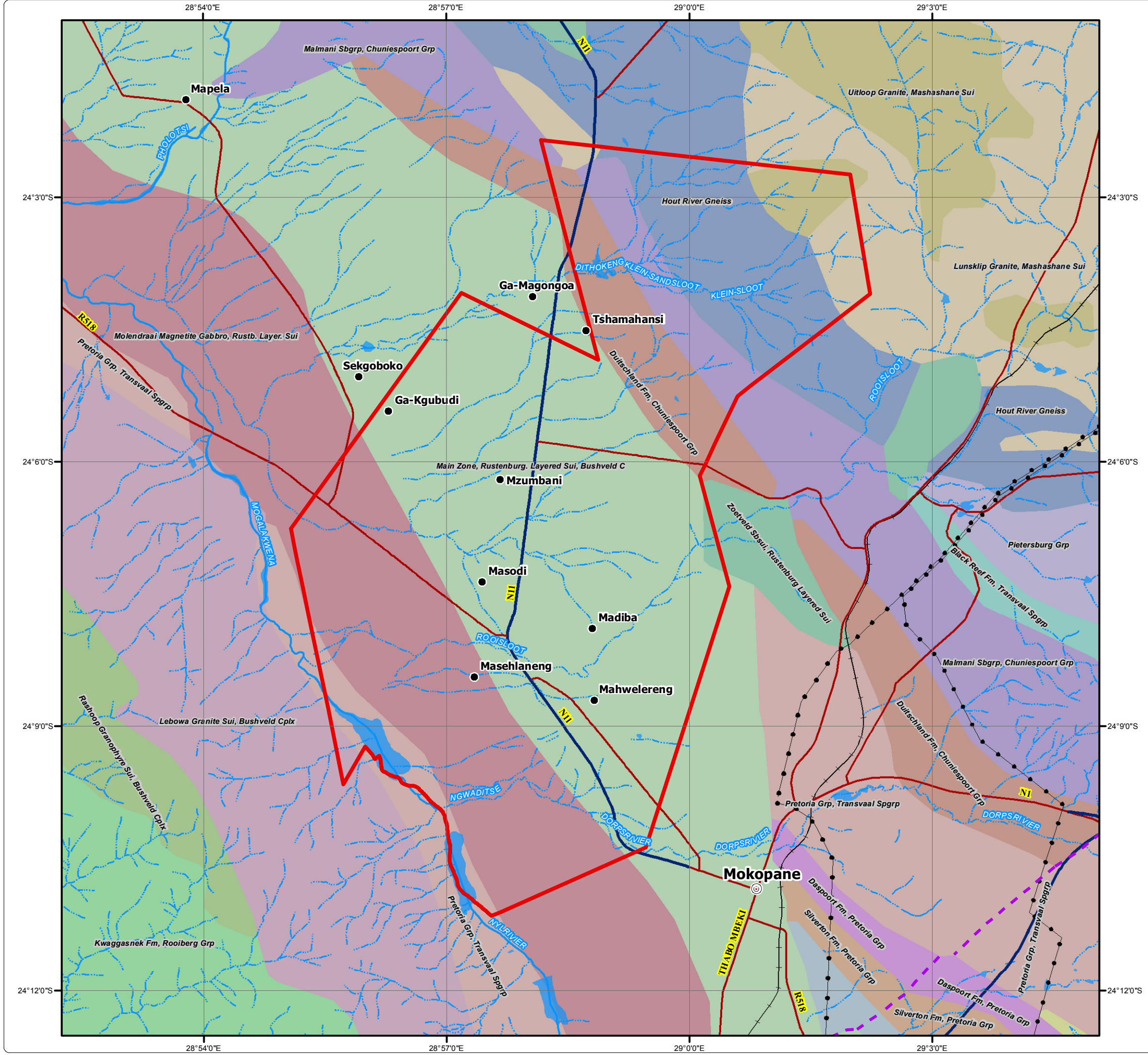


# Platreef Resources (Pty) Ltd Regional Geology



### Legend

- Project Area
  - Power Line
  - Arterial / National Route
  - Main Road
  - Railway Line
  - Non-Perennial Stream
  - Perennial Stream
  - Dam / Lake
  - Fault
- ### Geology
- Black Reef Fm, Transvaal Spgrp
  - Daspoort Fm, Pretoria Grp
  - Duitshand Fm, Chuniespoort Grp
  - Dwaalheuwel Fm, Pretoria Grp
  - Hout River Gneiss
  - Kwaggasnek Fm, Rooiberg Grp
  - Lebowa Granite Sui, Bushveld Cplx
  - Lunsclip Granite, Mashashane Sui
  - Magaliesberg Fm, Pretoria Grp
  - Main Zone, Rustenburg. Layered Sui, Bushveld C
  - Malmmani Sbsgrp, Chuniespoort Grp
  - Molendraai Magnetite Gabbro, Rustb. Layer. Sui
  - Pietersburg Grp
  - Pretoria Grp, Transvaal Spgrp
  - Rasthoop Granophyre Sui, Bushveld Cplx
  - Silverton Fm, Pretoria Grp
  - Swaershoek Fm, Nylstroom Sbsgrp
  - Uitloop Granite, Mashashane Sui
  - Zoetveld Sbsui, Rustenburg Layered Sui



DIGBY WELLS  
ENVIRONMENTAL

• Sustainability • Service • Positive Change • Professionalism • Future Focused • Integrity

Projection: Transverse Mercator	Ref #: scc.PLA 1677.201305.349
Datum: Hartebeesthoek 1994	Revision Number: 1
Central Meridian: 29°E	Date: 27/05/2013

