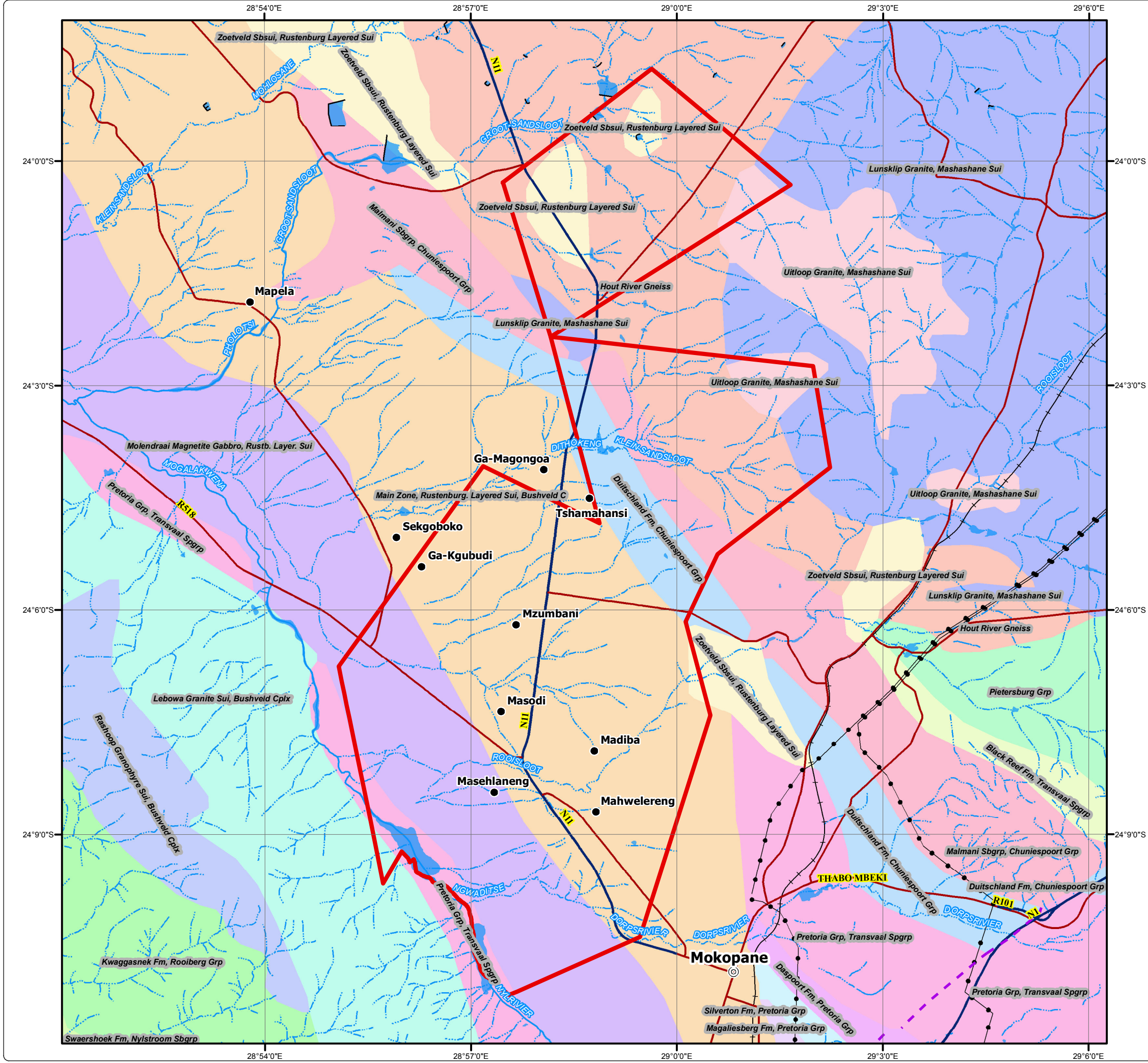


Platreef Resources (Pty) Ltd Regional Geology



Legend

- ESIA Study Area
- Power Line
- Arterial / National Route
- Main Road
- Railway Line
- Non-Perennial Stream
- Perennial Stream
- Dam / Lake
- Fault

Geology

- Black Reef Fm, Transvaal Spgrp
- Daspoort Fm, Pretoria Grp
- Duitschland Fm, Chuniespoort Grp
- Hout River Gneiss
- Kwaggasnek Fm, Rooiberg Grp
- Lebowa Granite Sui, Bushveld Cplx
- Lunsklip Granite, Mashashane Sui
- Magaliesberg Fm, Pretoria Grp
- Main Zone, Rustenburg, Layered Sui, Bushveld C
- Malmani Sbrgrp, Chuniespoort Grp
- Molendraai Magnetite Gabbro, Rustb. Layer. Sui
- Pietersburg Grp
- Pretoria Grp, Transvaal Spgrp
- Rashedoep Granophyre Sui, Bushveld Cplx
- Silverton Fm, Pretoria Grp
- Swaershoek Fm, Nylstroom Sbrgrp
- Uitloop Granite, Mashashane Sui
- Zoetveld Sbsui, Rustenburg Layered Sui

DIGBY WELLS
ENVIRONMENTAL

• Sustainability • Service • Positive Change • Professionalism • Future Focused • Integrity

Projection: Transverse Mercator Ref #: scc.PLA1677.201305.349
 Datum: Hartebeesthoek 1994 Revision Number: 1
 Central Meridian: 29°E Date: 27/05/2013

N
0 1 2 4
Kilometres
1:95 000

www.digbywells.com © Digby Wells Environmental