

PROGRESS REPORT 06: May 11, 2012

Tower 28

PROPOSED 400KV TABOR-WITKOP TRANSMISSION LINE, LIMPOPO PROVINCE

For: Stefanutti Stocks Power

Hester Roodt

Contact details:

073 222 4867
roodt.hester@gmail.com

Postnet Suite 47
Private Bag X9700
POLOKWANE 0700

May 11, 2012

TOWER 28

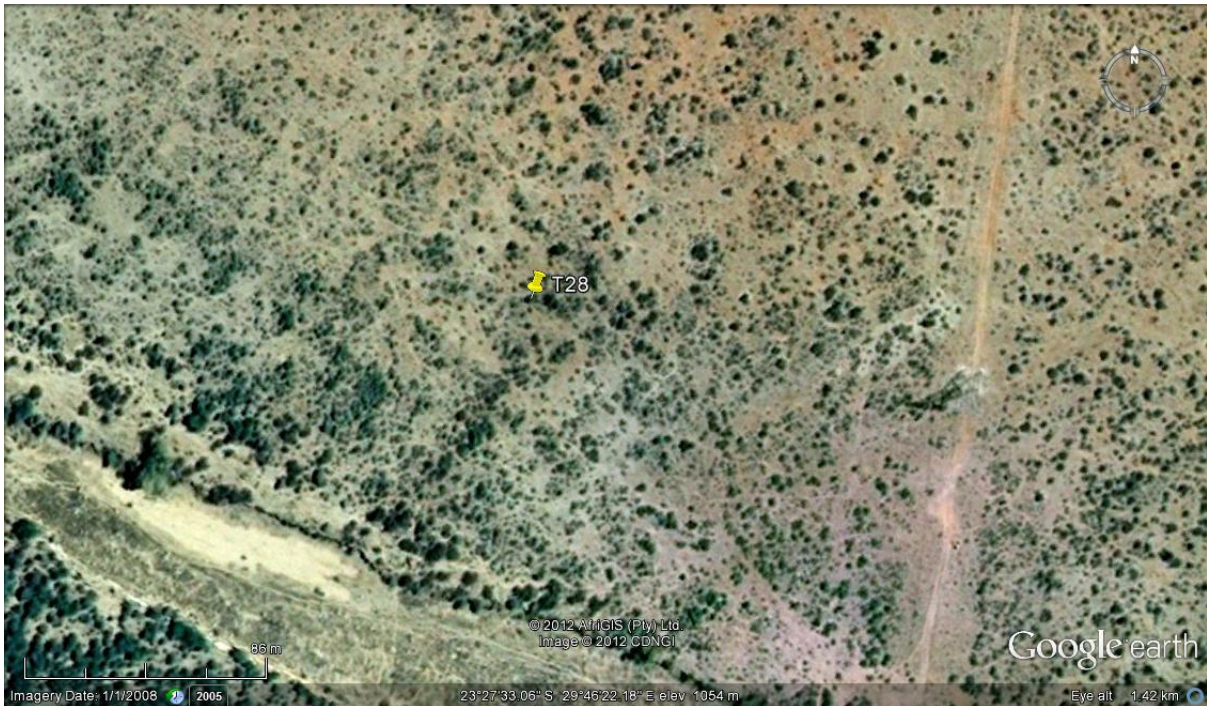


Figure 1. *In the above map no archaeological features could be discerned. However, archaeological features are not always visible on these maps, and for this purpose the site was visited.*

On Friday, May 11, 2012, the archaeologist was urgently summoned to Tower 28, where possible graves were located. New and unexpected finds are quite possible since not all sites had yet been inspected for archaeological deposits and features; some sites had previously been unidentified by the archaeologist who did the HIA in 2010; and other sites, identified by the present archaeologist, already inspected, needs to be re-examined.

No graves or any other archaeological material were located. A few possible stone flakes, indicating human activity during the Late Stone Age, were seen. But the area is riddled with ant heaps and the remains of abandoned ant heaps. The roots of shrubs and clusters of vegetation growth such as aloes and acacias also create raised surfaces which could be mistaken for graves. Some of the soil heaps were created when the access road for the older Eskom lines were prepared, some even containing stones, thus resembling more recent graves.

The archaeologist is confident that these are not graves on this site, since no signs of habitation have been located. The images below are included to illustrate the above examples of heap formation on the terrain.



Figure 2. A general view of the debushed area around Tower 28. The unevenness of the terrain is clearly seen by the cast shadows.



Figure 3. A general view of the terrain with its natural vegetation cover. The open area in the foreground is the access road of the previous Eskom line.



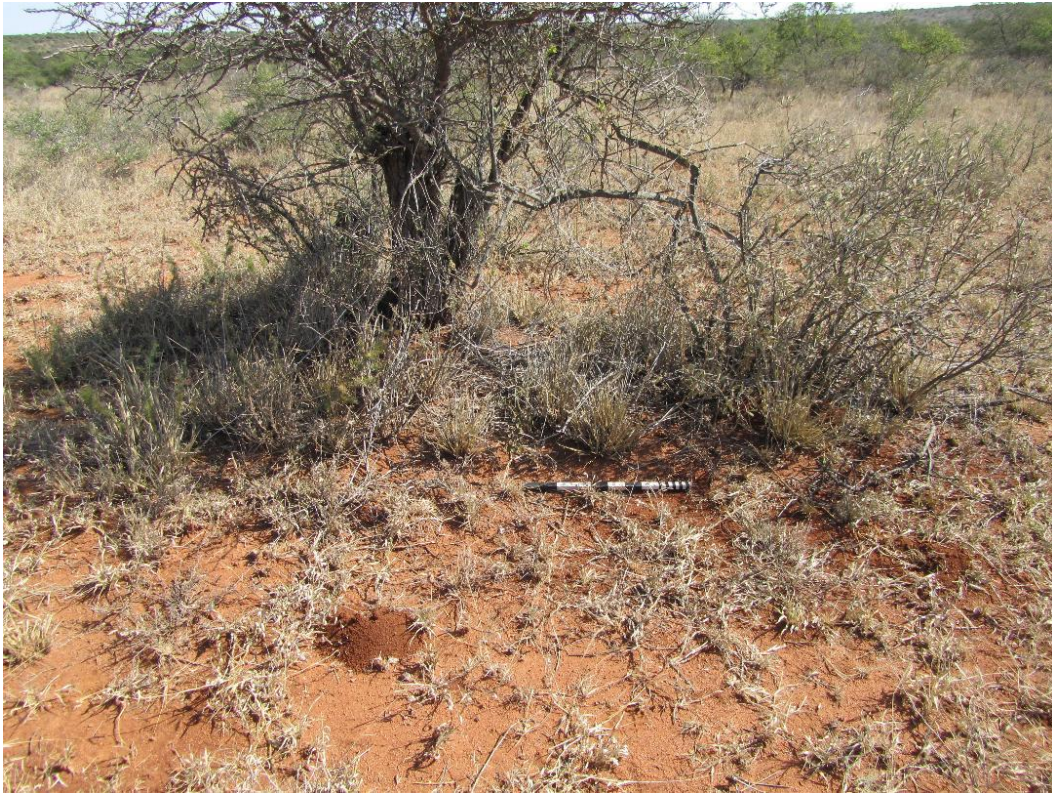
Figure 4. One of the more recent ant heaps. This could be mistaken for being a burial.



Figure 5. Another ant heap. This was apparently abandoned for a long period but shows signs of recent activity.



Figure 6. Many of the trees have been cut several times in the past, probably to be used for fire wood by the community nearby, and have now been reduced to shrubs. Their large root systems have caused these raises in the soil.



Figures 7 and 8. More examples where the level of the soil had been raised by the underlying root system, forming an “island” in comparison to the rest of the terrain.



Figure 9. An example of the soil heaps along the previously cleared road. It is also possible that the abandoned ant heaps caused the germination of seeds, thus accounting for the many “islands” containing vegetation.

Recommendations: No further action is required. However, should any cultural material be located during excavation of the tower foundations, an archaeologist should be immediately notified.

A handwritten signature in black ink, appearing to read 'H. Roodt'.

Hester Roodt

BA Hons Archaeology - UP; BA Hons Anatomy – UP