

MITIGATION OF ARCHAEOLOGICAL SITES ON KLIPGATS PAN : PROJECT PROPOSAL

This project has been through several phases. An initial EIA phase survey was conducted in which the nature of the archaeological and heritage environment was established. Due to various constraints identified during the EIA the location of the PV facility had to be shifted. The new area had not been subjected to a survey with reasonable coverage so, because our understanding meant that we expected no red flags, the development was authorised subject to a final survey to determine mitigation requirements. This survey has now also been completed. A number of archaeological sites requiring mitigation were encountered. The details of these are listed below.

Field No.	Site name	GPS co-ordinates	Description	Significance (Mitigation)
008	KGP2014/004	S30 02 09.2 E22 18 43.3	LSA scatter of pottery and background scatter of stone artefacts alongside ephemeral pan. At last 12 sherds (1 rim), mixed grass and mineral (grit) temper. Context is poor but soil containing sherds should be sieved.	Low-medium (1 hour)
014	KGP2014/006	S30 01 57.7 E22 18 51.9	LSA site with quartz, quartzite, crypto-crystalline silica (CCS), a CCS adze, 1 hammer stone / upper grindstone, a fragment of <i>Unio caffer</i> (freshwater mussel shell) and much ostrich eggshell.	Medium-high (16 hours)
015		S30 01 57.9 E22 18 52.2		
016		S30 01 57.7 E22 18 52.5		
021	KGP2014/008	S30 02 07.3 E22 18 34.3	LSA site with quartz, quartzite and ostrich eggshell, two probable lower grindstones.	Low-medium (4 hours)
022		S30 02 07.3 E22 18 34.5		
023	KGP2014/009	S30 02 04.8 E22 18 34.2	LSA scatter with quartz, quartzite and a hammer stone, tooth fragment, ostrich eggshell. Fairly low density but enough to be meaningful.	Low-medium (2 hours)
024		S30 02 04.4 E22 18 34.1		
026	KGP2014/011	S30 01 59.7 E22 18 29.9	Ephemeral LSA site among bushes with quartz, quartzite, ostrich eggshell.	Low (2 hours)
028	KGP2014/013	S30 01 57.1 E22 18 30.5	Ephemeral LSA site among bushes with quartz, quartzite, hornfels, CCS, ostrich eggshell.	Low-medium (2 hours)
029		S30 01 56.9 E22 18 30.8		
036	KGP2014/016	S30 02 23.6 E22 18 43.6	LSA scatter with quartz and ostrich eggshell.	Low-medium (2 hours)
037		S30 02 23.3 E22 18 43.3		

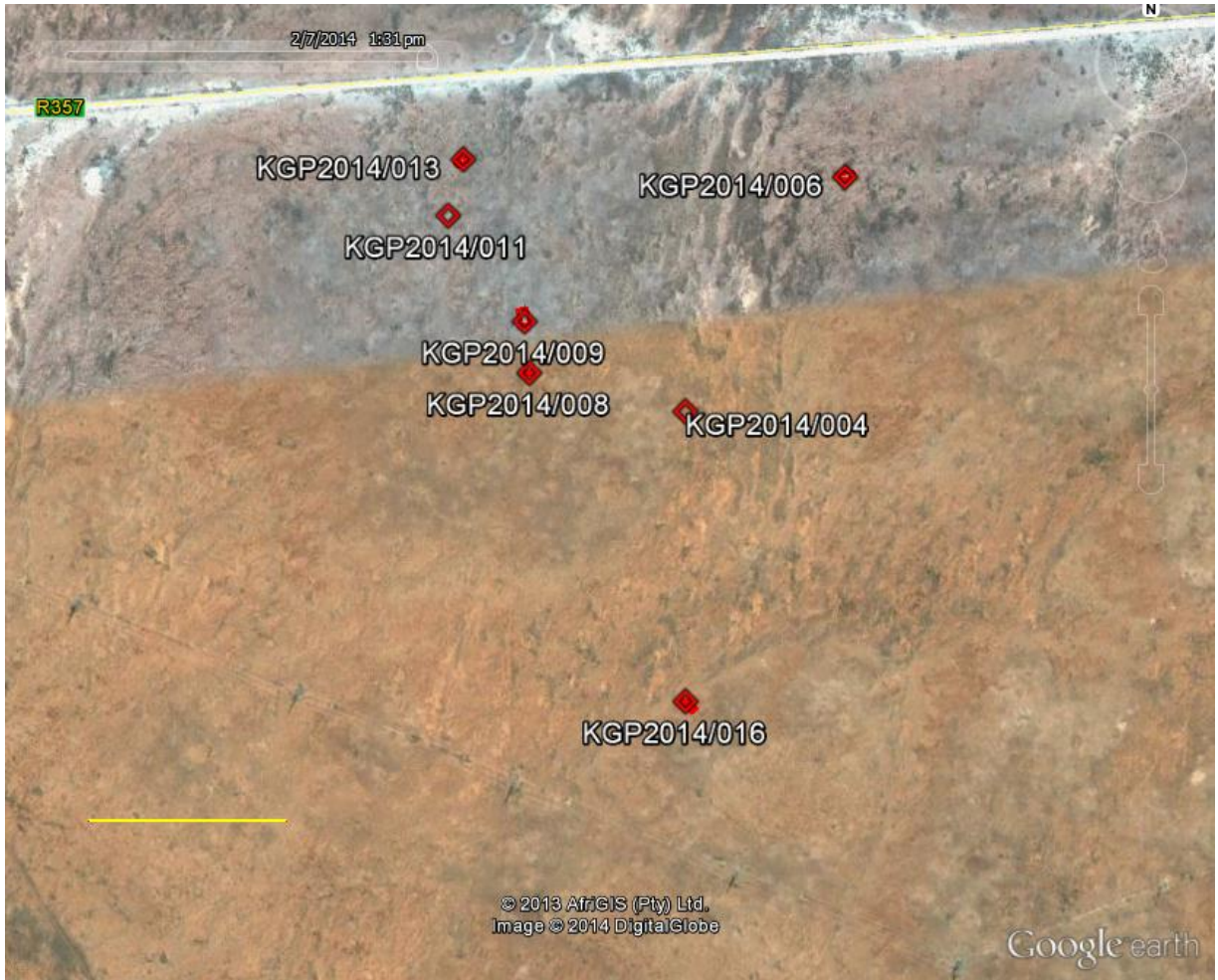
All these sites are surface occurrences on top of a thin sandy veneer. Beneath this and exposed over much of the development area the substrate is rocky. This means that there is no chance of subsurface archaeological resources. The sites will be gridded (50 cm by 50 cm squares will likely be

most feasible) and all material collected from each square. Sieving will be employed as required to ensure that all material has been collected from the sand. One site, KGP2014/004, has very poor context and no formal excavation will take place. This site appears to merely be a collection of pot sherds. It is proposed for collection because it is very unusual in the local context – no pottery was seen on any of the other LSA sites found during the survey.

The excavated material will be returned to Cape Town for study and reporting, whereafter it will be sent to McGregor Museum in Kimberley for permanent curation.



Location of the sites south of Copperton and the abandoned copper mine.



The distribution of archaeological sites to be mitigated. The yellow bar for scale is 300 m long.