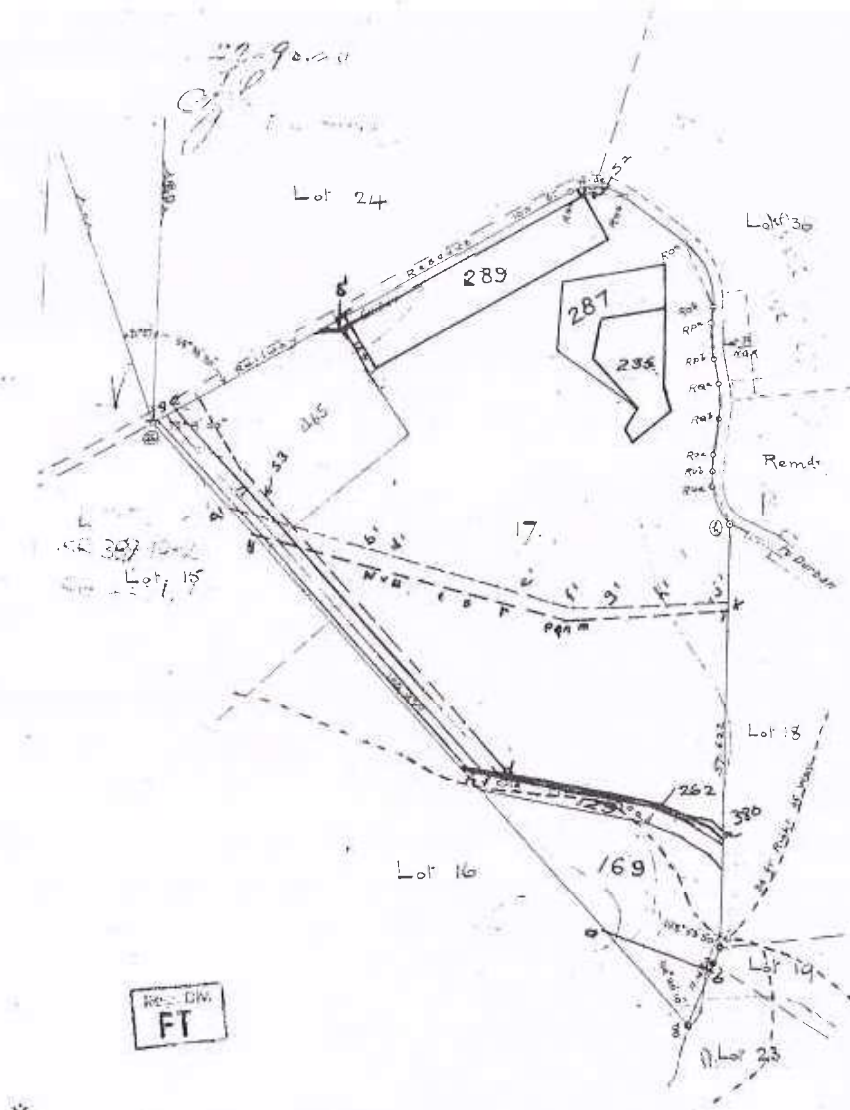


1914
Ex. of D.



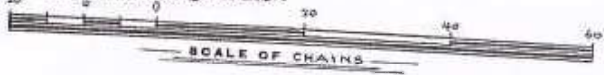
Station	Angles	Sides	Lengths	Area
1	64° 40' 12"	1/8	11.420	
2	77° 4' 40"	1/8	109.420	
3	147° 1'	1/8	61.500	
4	147° 1'	1/8	7.401	7.580
5	100° 24' 20"	1/8	10.433	
6	160° 24' 20"	1/8	4.849	10.141
7	178° 45' 00"	1/8	2.308	
8	188° 45' 00"	1/8	4.447	4.867
9	170° 11' 20"	1/8	3.500	
10	170° 11' 20"	1/8	4.402	4.920
11	183° 46' 20"	1/8	4.447	
12	183° 46' 20"	1/8	2.890	2.042
13	204° 30' 20"	1/8	2.825	
14	158° 25' 20"	1/8	4.874	5.853

CO-ORDINATES.

Station	X	Y
1	180.874	0.
2	+ 299.217	+ 776.504
3	+ 303.305	+ 788.964
4	+ 323.117	+ 763.265
5	+ 297.238	+ 771.880
6	+ 298.231	+ 776.158
7	+ 284.227	+ 774.023
8	+ 291.402	+ 776.482
9	+ 278.203	+ 772.292
10	+ 273.212	+ 777.647
11	+ 268.391	+ 777.200
12	+ 266.301	+ 777.140
13	+ 264.267	+ 777.215
14	+ 259.198	+ 779.747
1	+ 201.560	+ 780.483

Rec. DW.
FT

X
NOW BY THE ORDER OF THE
OF THE... **Uitkomst and Doornrug No. 852**



The above Diagram represents the figure and extent of
483 Acres 0 Roods 21 Perches of land known as
* sub 17 of the farm "Uitkomst and Doornrug" No. 852.

situated in the County of Pietermaritzburg, Province of Natal.

Bounded: E by Lots 18, 19 + 23 and Railway Reserve
S.W by Lots 15 and 16.
N.W by Railway Reserve

Surveyed by me,
May 1913
L. L. L.
Government Surveyor. 830

FOR ENDORSEMENTS etc., SEE BACK

COMP FT 6C 23

THE FOLLOWING...

SUB-DIVISION								
129	5335/57	368/57	8,1773 Ac.	474-2540 Ac.	3520/1952			
169	45/4/1954	130/54	44,6098 Ac.	430-3442 Ac.	3066/1957			
235	5602/60	904/60	11,2943	418-4299	3182/1961			
262	2152/1947	633/47	1,1645	417,2854	18354/1968			
287	220/1972	64/1972	4,8418 ha.	163,9278 ha.	11400/1972			
289	4283/1974	1314/1974	11,0250 ha.	152,9028 ha.	13037/1975			
386	1546/2001	425/2001	757.5	152,8271 Ha.	28505/2002			

The Pipeline Serv. Left
 S2
 3,00m WIDE HAS BEEN LAID DOWN AS SHOWN
 S.G. No. 2461/1983 DATE 1983.2.2
 [Signature]
 for SURVEYOR-GENERAL
 D/S 95/19835

The E. of a Pipeline Serv. Left k.l.w.a. 9.P.R.S. 6.u.v.w.y
 6,10m WIDE HAS BEEN LAID DOWN AS SHOWN
 S.G. No. 4713/1975 DATE 1975.7.19
 C.S. Holmberg
 for SURVEYOR-GENERAL
 D/S 1073/1977 5

THE SERV LEFT S1
 7,8m WIDE HAS BEEN LAID DOWN AS SHOWN
 S.G. No. 1259/1976 DATE 23.4.1977
 C.S. Holmberg
 for SURVEYOR-GENERAL
 D/S No 637/1977
 D/S No 237/19925

The E. of an E.P.T. Serv Left
 S3
 WIDE HAS BEEN LAID DOWN AS SHOWN
 S.G. No. 4501/1982 DATE 1982.5.2
 [Signature]
 for SURVEYOR-GENERAL
 D/S 461/19825

THE E.P.T. Liner Left de. fg. hj
 WIDE HAS BEEN LAID DOWN AS SHOWN
 S.G. No. 6125/59 DATE 20.9.1959
 [Signature]
 for SURVEYOR-GENERAL
 D/S 361/1960

The E. of a Pipeline Serv Left
 a.b.d.e.f.g.h.i.j
 WIDE HAS BEEN LAID DOWN AS SHOWN
 S.G. No. S.P. 2133/1983 DATE 1984.8.10
 [Signature]
 for SURVEYOR-GENERAL
 D/S 1115/19845

Centreline of Transline Serv a.b.
 S.G. No. 59207/1954 DATE 13.11.54
 [Signature]
 D/S 456/1954
 S.G. No. 211/1954