



### **Vision:**

At Bokamoso we strive to find the best planning solutions by taking into account the functions of a healthy ecosystem. Man and nature should be in balance with each other.

### **Mission:**

We design according to our ethical responsibility, take responsibility for successful completion of projects and constitute a landscape that contributes to a sustainable environment. We add value to the operations of our clients and build long term relationships that are mutually beneficial.

### **Values:**

Integrity

Respect



**Bokamoso** stands on the basis of fairness. This include respect within our multicultural team and equal opportunities in terms of gender, nationality and race.

We have a wide variety of projects to tend to, from complicated reports to landscape installation. This wide range of projects enables us to combine a variety of professionals and skilled employees in our team.

Bokamoso further aids in the development of proficiency within the working environment. Each project, whether in need of skilled or unskilled tasks has its own variety of facets to bring to the table.

We are currently in the process of receiving our BEE scorecard. We support transformation in all areas of our company dynamics.



**03 Human Resources**

**031 Employment Equity**

## **Lizelle Gregory (100% interest)**

Lizelle Gregory obtained a degree in Landscape Architecture from the University of Pretoria in 1992 and passed her board exam in 1995.

Her professional practice number is PrLArch 97078.

Ms. Gregory has been a member of both the Institute for Landscape Architecture in South Africa (ILASA) and South African Council for the Landscape Architecture Profession (SACLAP), since 1995.

Although the existing Environmental Legislation doesn't yet stipulate the academic requirements of an Environmental Assessment Practitioner (EAP), it is recommended that the Environmental Consultant be registered at the International Association of Impact Assessments (IAIA). Ms. Gregory has been registered as a member of IAIA in 2007.

Ms. Gregory attended and passed an International Environmental Auditing course in 2008. She is a registered member of the International Environmental Management and Assessment Council (IEMA).

She has lectured at the Tshwane University of Technology (TUT) and the University of Pretoria (UP). The lecturing included fields of Landscape Architecture and Environmental Management.

Ms. Gregory has more than 20 years experience in the compilation of Environmental Evaluation Reports:

Environmental Management Plans (EMP);

Strategic Environmental Assessments;

All stages of Environmental input ;

EIA under ECA and the new and amended NEMA regulations and various other Environmental reports and documents.

Ms. Gregory has compiled and submitted more than 600 Impact Assessments within the last 5-6 years. Furthermore, Ms. L. Gregory is also familiar with all the GDARD/Provincial Environmental policies and guidelines. She assisted and supplied GAUTRANS/former PWV Consortium with Environmental input and reports regarding road network plans, road determinations, preliminary and detailed designs for the past 12 years.



**03 Human Resources**

**032 Members**

# Consulting

## Anè Agenbacht

**Introduction to Sustainable Environmental Management—An overview of Principles, Tools, & Issues (Potch 2006)**  
**Leadership Training School (Lewende Woord 2010)**  
**BA Environmental Management (UNISA 2011)**  
**PGCE Education (Unisa 2013) - CUM LAUDE**  
Project Manager  
More than 10 years experience in the compilation of various environmental reports

## Mary-Lee Van Zyl

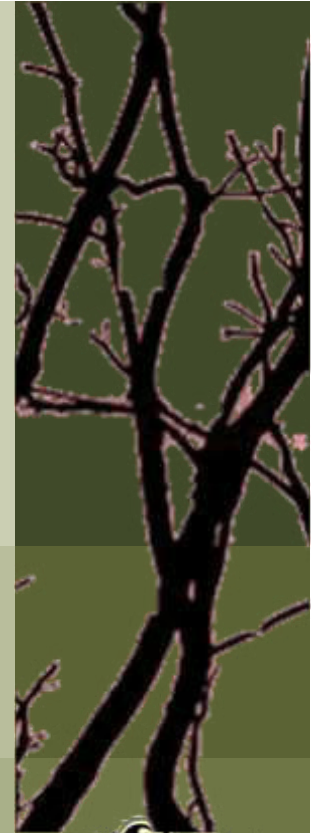
**Msc. Plant Science (UP)**  
**BSc (Hons) Plant Science (UP)**  
**BSc Ecology (UP)**  
More than 3 years working experience in the Environmental field  
Specialises in ECO works, Basic Assessments, EIA's, and Flora Reports  
Compilation of various Environmental Reports

## Dashentha Moodley

**BA Honours Degree in Environmental Management (UNISA) - CUM LAUDE**  
**Bachelor of Social Science in Geography & Environmental Management (UKZN)**  
More than 5 years experience in WUL Applications & Integrated Environmental Management within water resource management.  
Senior Environmental Practitioner & Water Use Licence Consultant  
Specialises in Water Use License & Compilation of various Env. Reports

## Nadine Duncan

**BSc (Hons) Geography (UP)**  
**BSc Landscape Architecture (UP)**  
More than 10 years experience in compilation of Basic Assessments and EIA Reports  
Compilation of various Environmental Reports



**03 Human Resources**

**033 Personnel**

**Ben Bhukwana**

**BSc Landscape Architecture (UP)**

More than 6 years experience in the field of Landscape Architecture (Design, Construction, and Implementation).

Specialises in Landscape Design, ECO, Rehabilitation Plans and Compilation Basic Assessment Reports and various environmental reports Compilation of Tender documents

**Juanita de Beer**

**Diploma Events Management and Marketing (Damelin)**

Specializes in Public relations and Public Participation Processes (4 years experience)

Specialises in compiling various environmental reports

**Alfred Thomas**

**CIW Foundation& Internet Marketing (IT Academy)**

12 years experience in GIS and IT in general.

GIS Operator and Multimedia Specialist.

**Bianca Reyneke**

**Applying SHE Principles and Procedures (NOSA)**

**Intro to SAMTRAC Course (NOSA)**

SHEQ Coordinator and compilation of environmental reports

Specialises in compiling various environmental reports

**A.E. van Wyk**

**BSc. Environmental Sciences (Zoology and Geography)**

Specialises in compiling various environmental reports



**03 Human Resources**

**034 Personnel**

# In-house Specialists

## Corné Niemandt

**M.Sc. Plant Science (UP 2015) – Cum Laude**

**B.Sc. (Hons) Zoology (UP 2012)**

**B.Sc. Ecology (UP 2011)**

Specialises in vegetation and plant surveys

Compilation of fauna and flora specialist reports

## Garth van Rooyen

**BSc. (Hons) Environmental Soil Science**

**BSc. Geology**

Specialises in vegetation and plant surveys

Compilation of fauna and flora specialist reports

## Sampie van Rooyen

**M.Sc. Environmental Sciences in Botany (Candidate) (NWU)**

**B.Sc. (Hons) Ecological Remediation (NWU)**

**B.Sc. Environmental Sciences and Tourism (NWU)**

Specialises in conducting ecological surveys and plant identification



**03 Human Resources**

**035 Personnel**

**Elsa Viviers**

**Interior Decorating (Centurion College)**

( Accounting/ Receptionist ) and Secretary to Lizelle Gregory

**Loura du Toit**

**N. Dip. Professional Teacher (Heidelberg Teachers Training College )**

Librarian and PA to Project Manager

**Merriam Mogalaki**

Administration Assistant with in-house training in bookkeeping

## **Landscape Contracting**

**Elias Maloka**

Assisting with Public Participations and Office Admin

Site manager overseeing landscape installations.

Irrigation design and implementation.

Landscape maintenance

More than 18 years experience in landscape construction works.

The contracting section comprises of six permanently employed black male workers. In many cases the team consists of up to 12 workers, depending on the quantity of work.



**03 Human Resources**

**035 Personnel**



## **01 Environmental Management Services**

- Basic Assessment Reports
- EIA & Scoping Reports
- Environmental Management Plans
- Environmental Scans
- Strategic Environmental Assessments
- EMP for Mines
- Environmental Input and Evaluation of Spatial Development Frameworks
- State of Environmental Reports
- Compilation of Environmental Legislation and Policy Documents
- Environmental Auditing and Monitoring
- Environmental Control Officer (ECO)
- Visual Impact assessments
- Specialist Assistance with Environmental Legislation Issues and Appeals
- Development Process Management
- Water Use License applications to DWA
- Waste License Application



**04 Services**

**041 Consulting Services**



## 02 Landscape Architecture

- Master Planning
- Sketch Plans
- Planting Plans
- Working Drawings
- Furniture Design
- Detail Design
- Landscape Development Frameworks
- Landscape Development Plans (LDP)
- Contract and Tender Documentation
- Landscape Rehabilitation Works

## 03 Landscape Contracting

Implementation of Plans for:

- Office Parks
- Commercial/ Retail / Recreational Development
- Residential Complexes
- Private Residential Gardens
- Implementation of irrigation systems



*Bokamoso* 

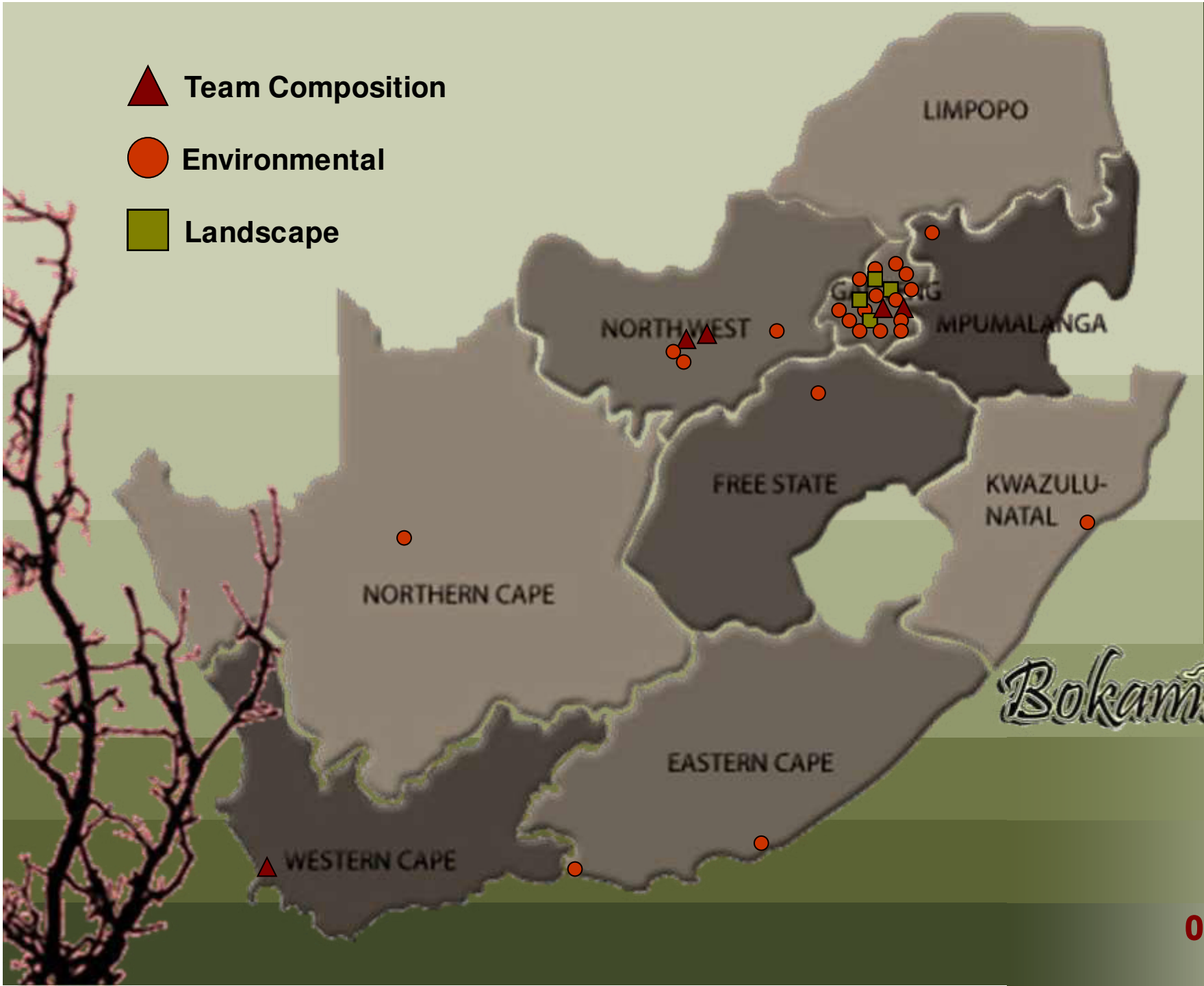
**04 Services**

**042 Contracting Services**

▲ Team Composition

● Environmental

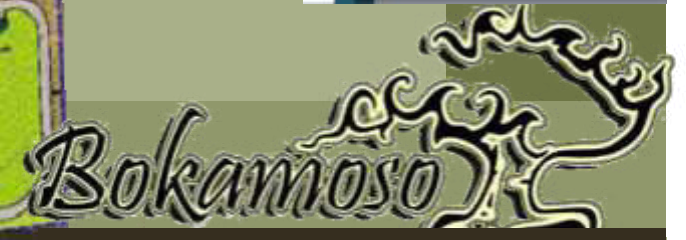
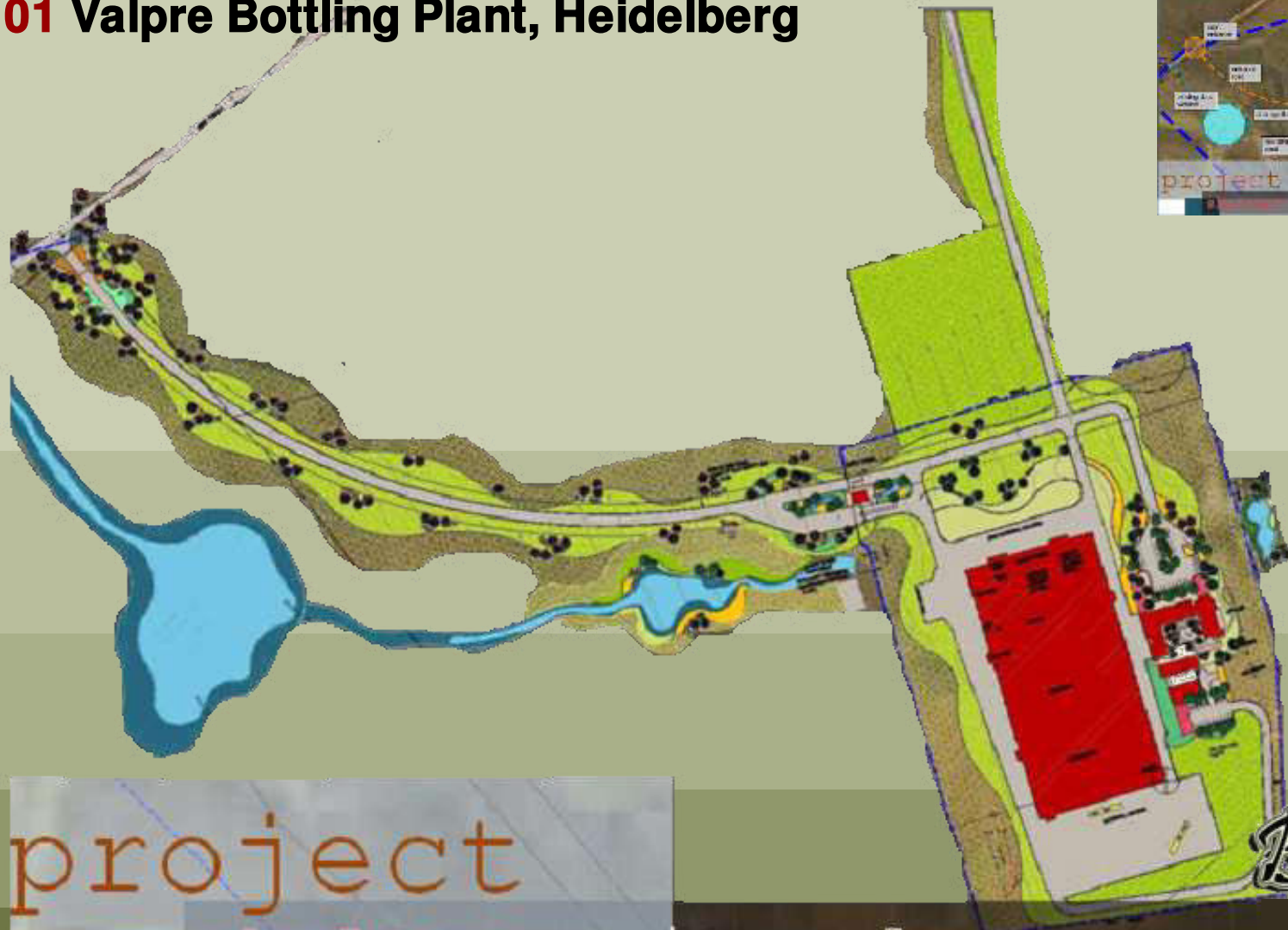
■ Landscape



**04 Services**

**043 Orientation**

# 01 Valpre Bottling Plant, Heidelberg



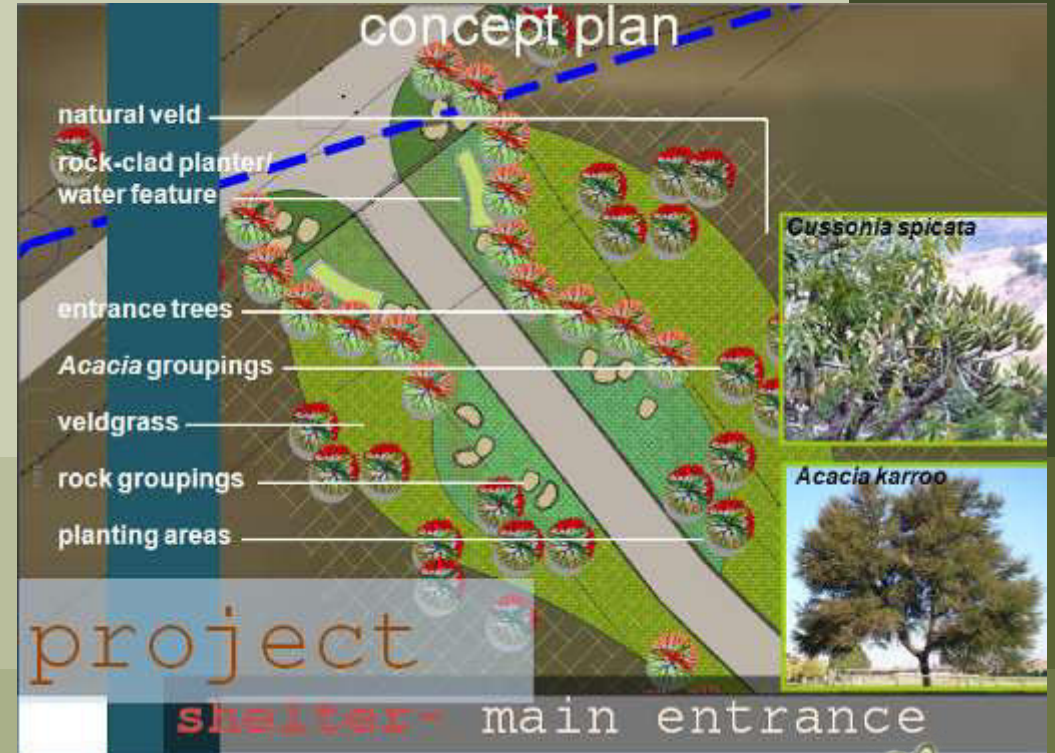
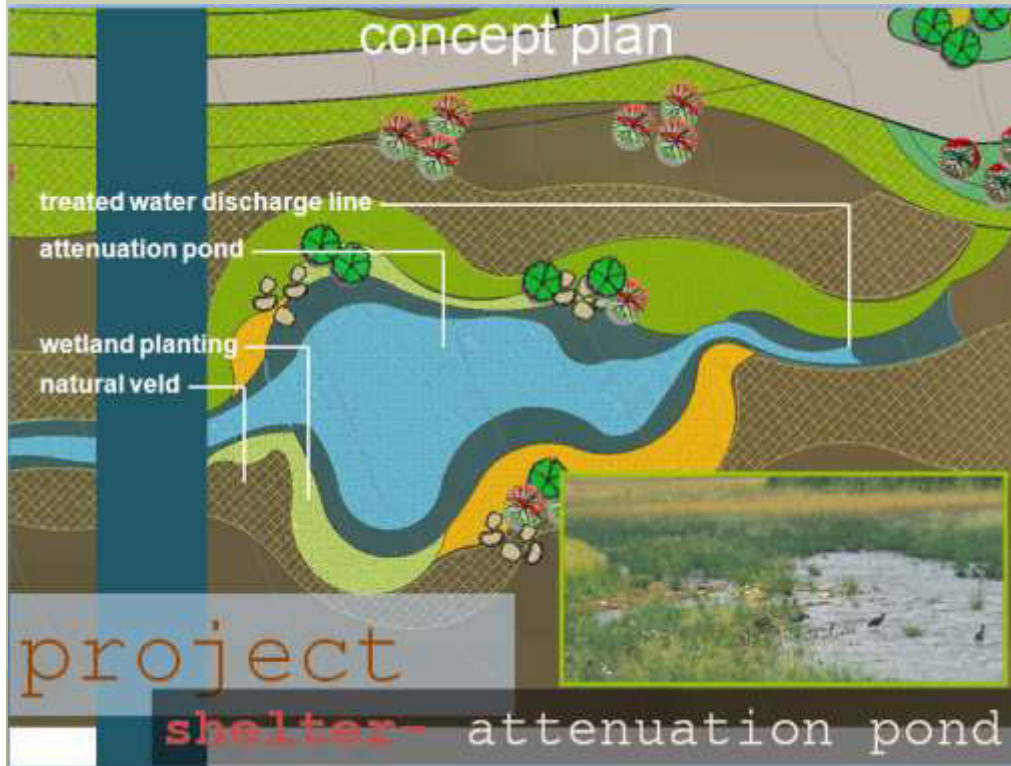
project shelter-site plan

## 05 Landscape Projects- Current

### 051 Commercial



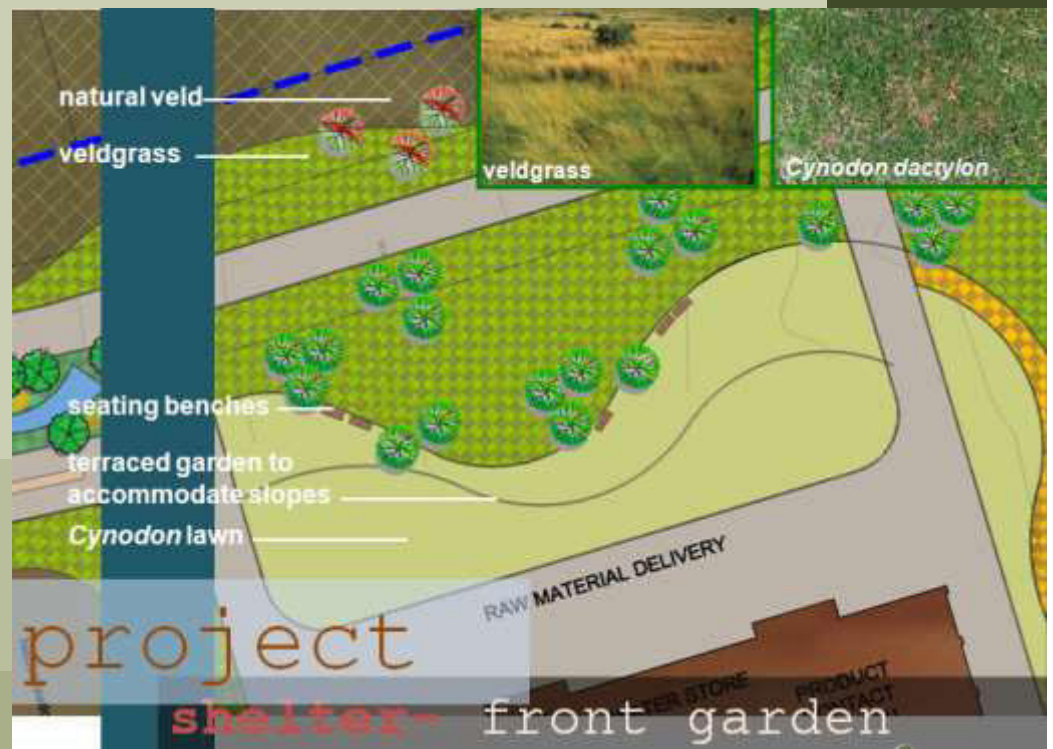
# 01 Valpre Bottling Plant, Heidelberg



## 05 Landscape Projects- Current

### 051 Commercial

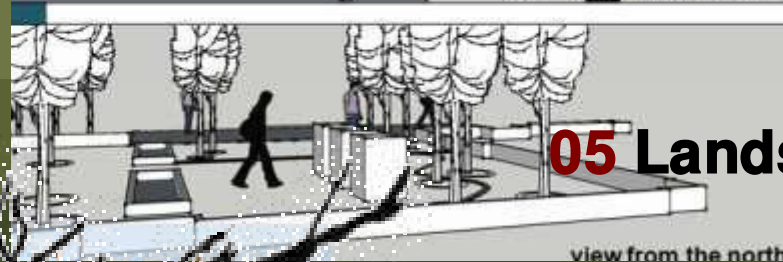
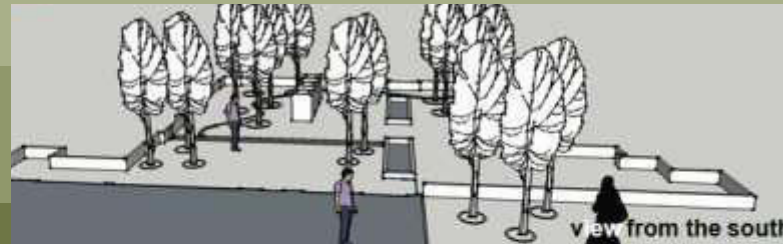
# 01 Valpre Bottling Plant, Heidelberg



## 05 Landscape Projects– Current

### 051 Commercial

# 01 Valpre Bottling Plant, Heidelberg



**05 Landscape Projects– Current**

**051 Commercial**

## 02 Melodie Waters, Hartebeespoortedam



Streetscape

Indigenous Planting



05 Landscape Projects – Current

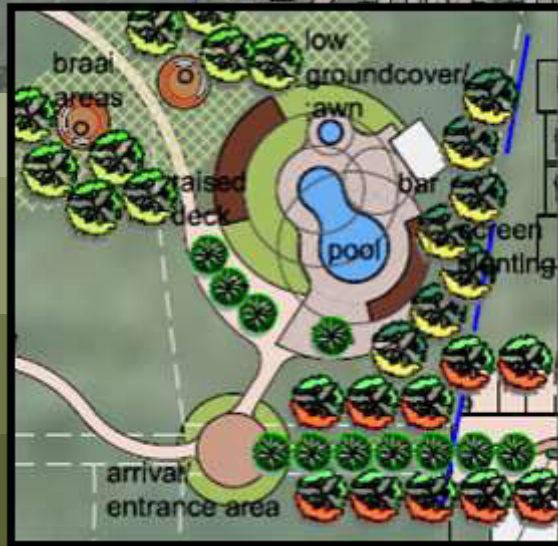
052 Commercial/Recreational



## 02 Melodie waters, Hartebeestpoortdam



Rehabilitation



Area Layout



05 Landscape Projects– Current

052 Commercial/Recreational



### 03 Grain Building, Pretoria



*Bokamoso*

**05** Landscape Projects– Completed

**053** Offices

## 04 Ismail Dawson offices, Pretoria



*Bokamoso*

## 05 Landscape Projects – Conceptual

053 Offices

# 05 Celtic Manor, Pretoria



*Bokamoso*

**05 Landscape Projects - Completed**

**054 Complex Development**

**06 The Wilds, Pretoria**



**05 Landscape Projects – Completed**

**054 Complex Development**

# 07 The Wilds, Pretoria

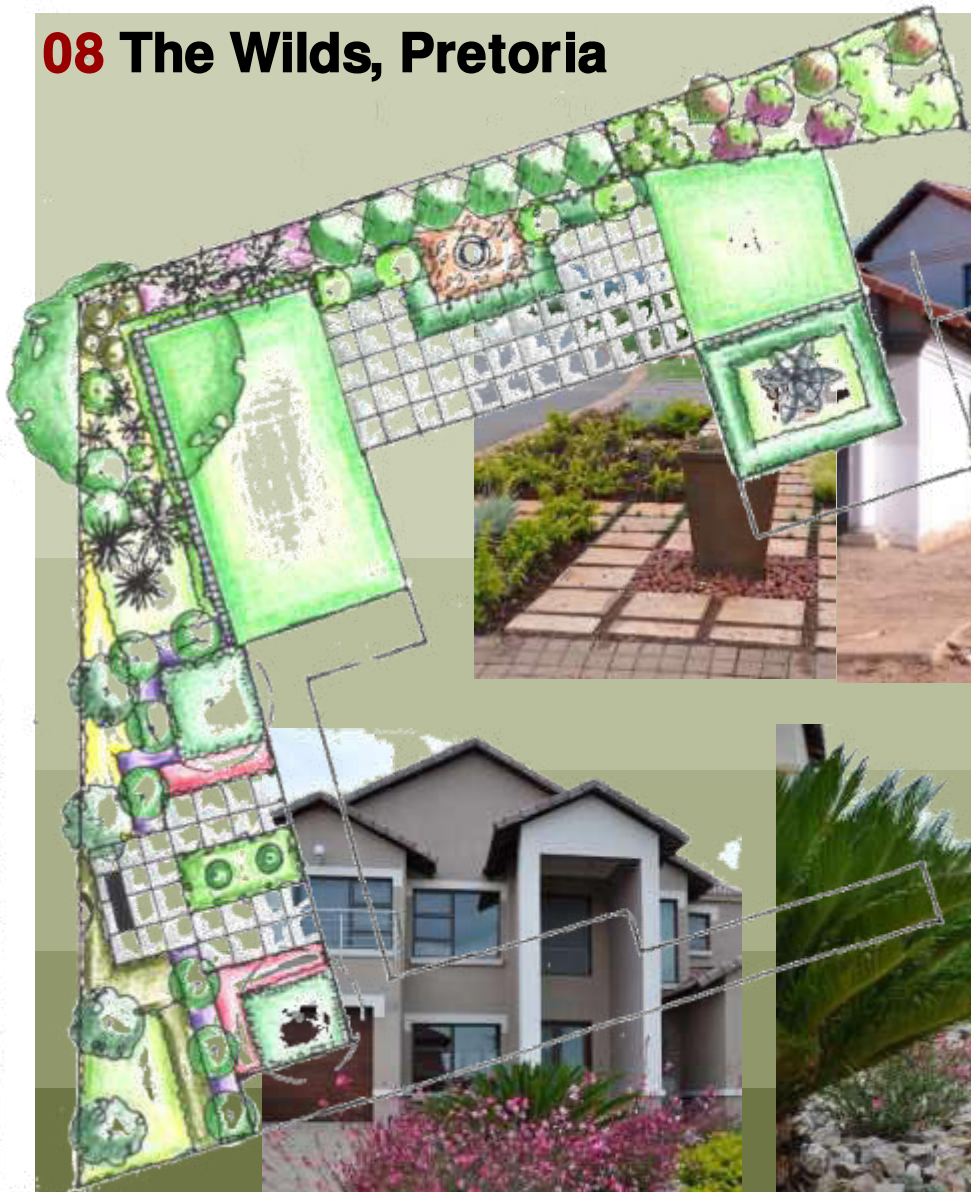


*Bokamoso*

**05 Landscape Projects – Completed**

**055 Residential**

## 08 The Wilds, Pretoria



*Bokamoso*

**05 Landscape Projects – Completed**

**055 Residential**

**09 The Wilds, Pretoria**



*Bokamoso*

**05 Landscape Projects – Completed**

**055 Residential**

# 010 The Wilds, Pretoria



**05 Landscape Projects – Completed**

**055 Residential**





# 011 Governor of Reserve Bank's Residence, Pretoria



Plant Palette



Option 1



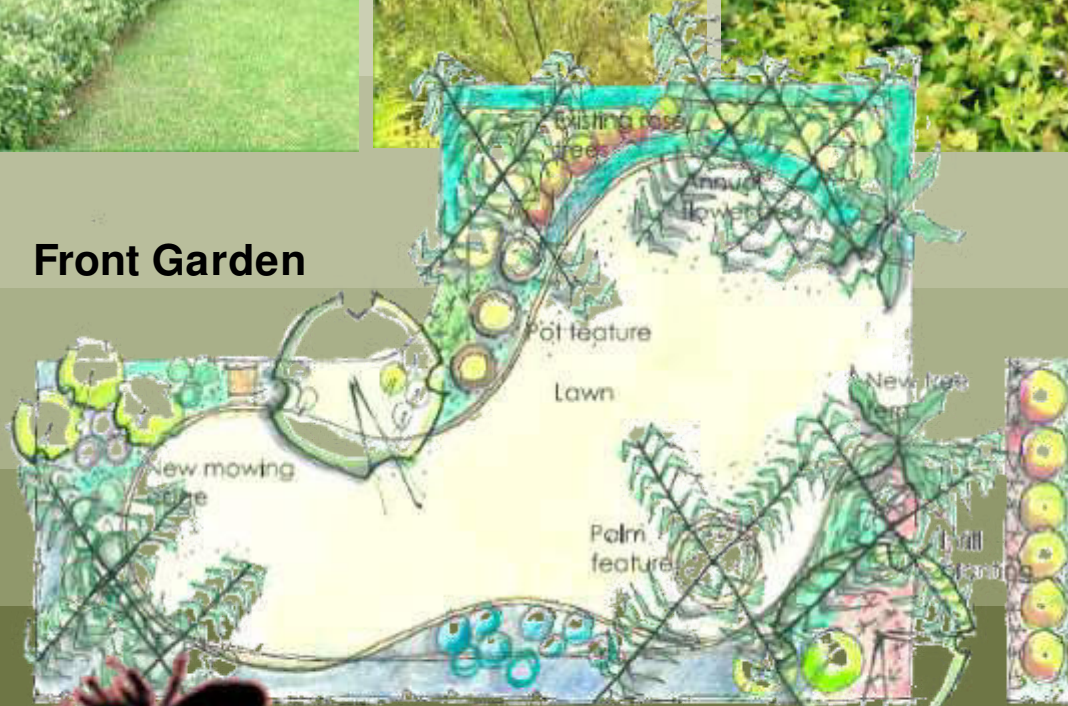
Option 2



# 012 House Ismail, Pretoria



Front Garden



Back Garden



# 013 Forest Garden, Pretoria



*Bokamoso*

**05** Landscape Projects – Completed

**055** Residential

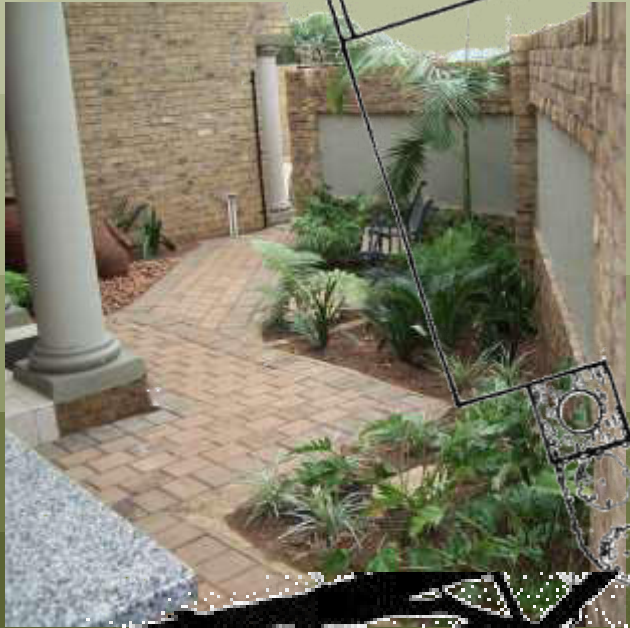
# 015 Forest Garden, Pretoria



*Bokamoso* 

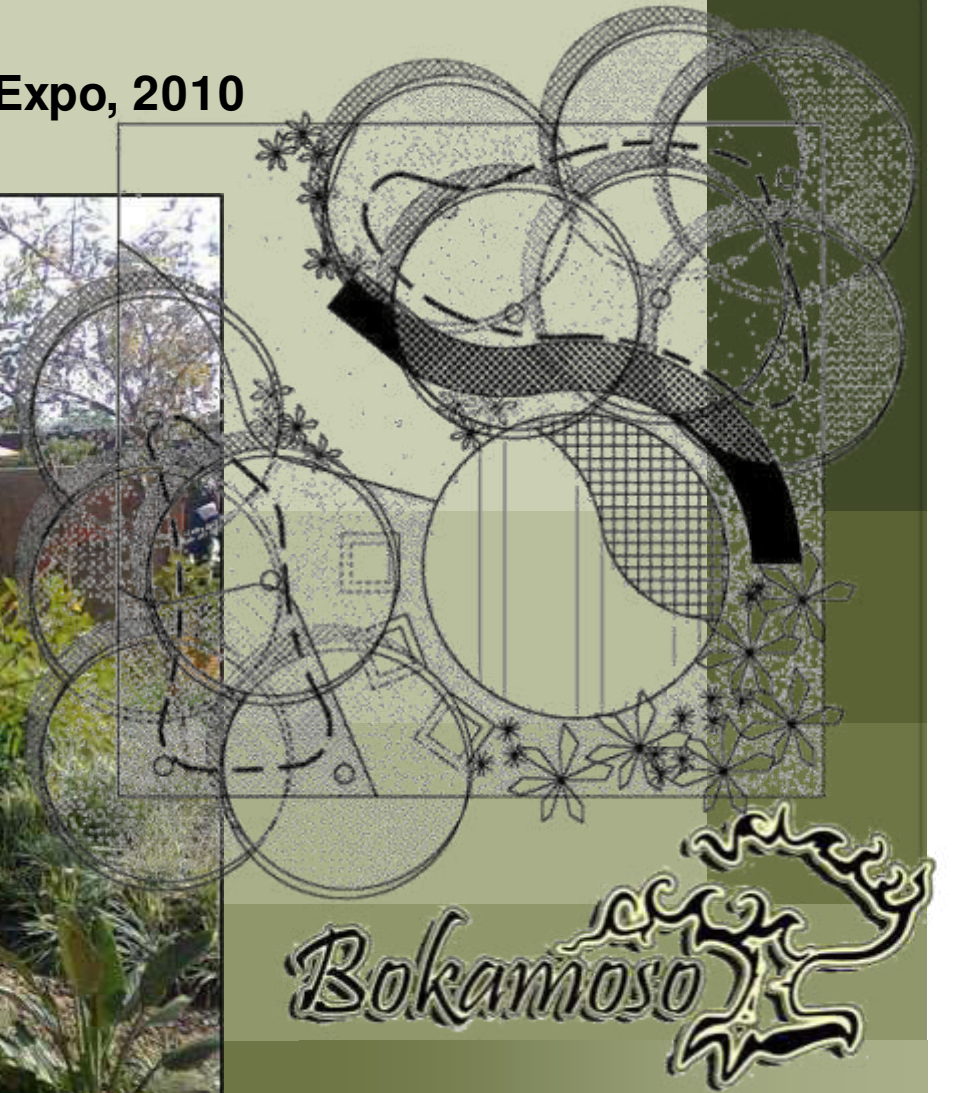
**05** Landscape Projects - Completed

**055** Residential



# 01 Safari Garden Expo

Received a Silver Certificate at the Safari Garden Expo, 2010



06 Corporate Highlights

061 Awards

## **02 UNISA Sunnyside Campus, Pretoria**

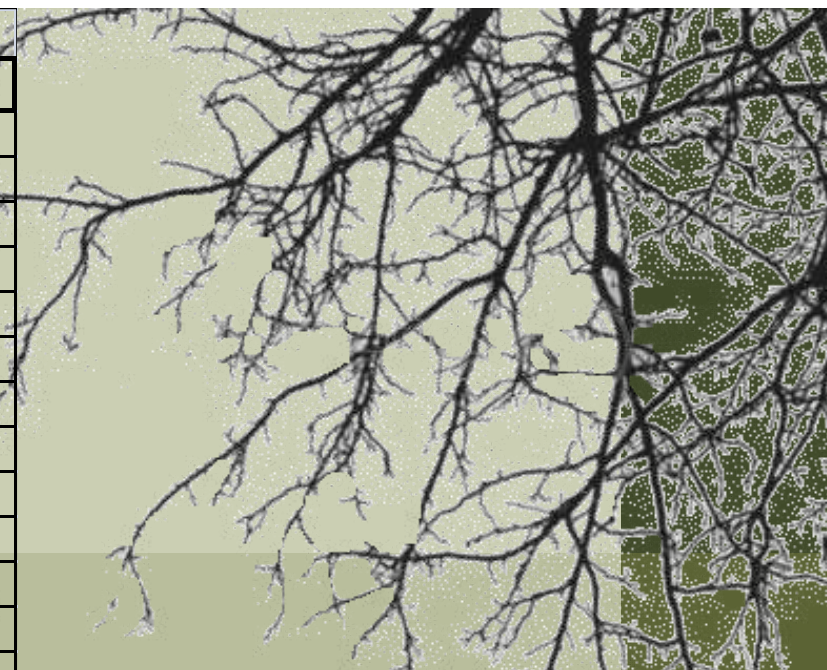
**Best Commercial Paving Plan in Gauteng, 1997**



**06 Corporate Highlights**

**061 Awards**

Project Name	Status	Project
<b>Environmental Impact Assessment(EIA) and Scoping Report</b>		
Junction 21	ROD	EIA
5 O'clock site access	In Progress	EIA
Bokamoso X 1	In Progress	Scoping & EIA
Doornvallei Phase 6 & 7	In Progress	EIA
Engen Interchange	In Progress	Scoping & EIA
Erasmia X15	In Progress	EIA
Franschkloof	In Progress	EIA
K113	Amendment of ROD	EIA
K220 East	ROD	EIA
K220 West	ROD	EIA
K54 ROD conditions	In Progress	EIA
Knopjeslaagte 95/Peachtree	ROD	EIA
Knopjeslaagte portion 20 & 21	ROD	EIA
Lillieslief/Nooitgedacht	In Progress	EIA
Mooiplaats 70 (Sutherland)	In Progress	EIA
Naauwpoort 1 - 12/Valley View	In Progress	EIA
PeachTree X5	In Progress	EIA
Strydfontein 60	In Progress	EIA
Thabe Motswere	In Progress	Scoping & EIA
Vlakplaats	In Progress	EIA
Waterval Valley	In Progress	EIA
<b>Environmental Opinion</b>		
Doornkloof 68 (Ross)	In Progress	Opinion
Monavoni X 53	In Progress	BA & Opinion
Mooikloof (USN)	In Progress	Opinion
Norwood Mall/Sandspruit	In Progress	Opinion
Riversong X 9	In Progress	Opinion
Sud Chemie	In Progress	Opinion
USN Benjoh Fishing Resort	In Progress	Opinion



The adjacent list host the status of our current projects. Only a selected amount of projects are displayed.



**07 Current Environmental Projects**

**071 EIA, Scoping & Opinion**

Project Name	Status	Project
<b>Basic Assessment(BA)</b>		
Annlin X 138	In Progress	BA
Clubview X 29	ROD	BA
Darrenwood Dam	In Progress	BA
Durley Holding 90 & 91	In Progress	BA
Elim	In Progress	BA
Fochville X 3	In Progress	BA
Hartebeeshoek 251	In Progress	BA
Klerksdorp (Matlosana Mall)	In Progress	BA
Monavoni External Services	ROD	BA
Monavoni X 45	Amendment of ROD	BA
Montana X 146	In Progress	BA
Rooihuiskraal X29	In Progress	BA
Thorntree Mall	In Progress	BA

<b>Environmental control officer (ECO)</b>		
Grace Point Church	In Progress	ECO
R 81	In Progress	ECO
Highveld X 61	In Progress	ECO
Mall of the North	In Progress	ECO
Olievenhoutbosch Road	In Progress	ECO
Orchards 39	In Progress	ECO
Pierre van Ryneveld Reservoir	In Progress	ECO
Project Shelter	In Progress	ECO

<b>S24 G</b>		
Wonderboom	In Progress	S24 G
Mogwasi Guest houses	Completed	S24 G



**07 Current Environmental Projects**

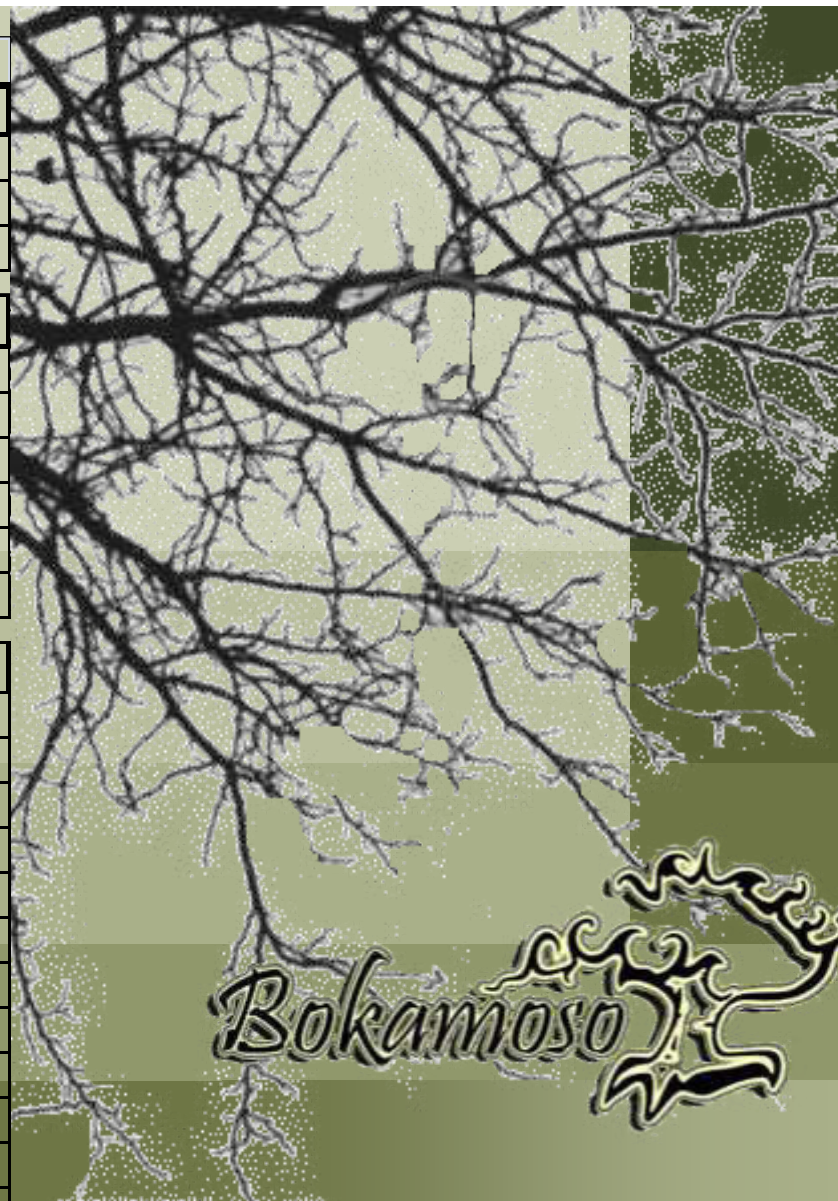
**072 BA, ECO & S24 G**



Project Name	Status	Project
<b>Objection</b>		
Colesberg WWTW	In Progress	Objection
Nigel Steelmill	Completed	Objection
Chantilly Waters	Completed	Objection

<b>Development facilitation Act- Input (DFA)</b>		
Burgersfort	In Progress	DFA & BA
Doornpoort Filling Station	In Progress	DFA & EIA & Scoping
Eastwood Junction	In Progress	DFA
Ingersol Road (Erf 78, 81 - 83)	In Progress	DFA
Roos Senekal	In Progress	DFA & EIA & Scoping
Thaba Meetse 1	In Progress	DFA & EIA & Scoping

<b>Water Use License Act (WULA)</b>		
Britstown Bulk Water Supply	In Progress	WULA
Celery Road / Green Channel	In Progress	WULA
Clayville X 46	In Progress	WULA
Dindingwe Lodge	In Progress	WULA
Doornpoort Filling Station	In Progress	WULA+DFA+EIA+SC
Eco Park Dam	In Progress	WULA
Groote Drift Potch	In Progress	WULA
Jozini Shopping Centre	In Progress	WULA+BA
K60	Completed	WULA
Maloto Roads	In Progress	WULA
Kwazele Sewage Works	In Progress	WULA
Monavoni External Services	In Progress	WULA+BA
Nyathi Eco Estate	In Progress	WULA
Prairie Giants X 3	In Progress	WULA
Waveside Water Bottling Plant	Completed	WULA



**07 Current Environmental Projects**

**073 Objection, DFA & WULA**

Project Name	Status	Project
<b>Environmental Management Plan(EMP)</b>		
Heidelberg X 12	ROD	EMP
Monavoni Shopping Centre	Completed	EMP
Forest Hill Development	Completed	EMP
Weltevreden Farm 105KQ	Completed	EMP+EIA
Raslouw Holding 93	Completed	EMP+BA
Durley Development	Completed	EMP+BA
Rooihuiskraal North X 28	Completed	EMP

<b>Rehabilitation Plan</b>		
Norwood Mall/Sandspruit	In Progress	Rehabilitation
Project Shelter Heidelberg	In Progress	Rehabilitation
Sagewood Attenuation Pond	ROD	Rehabilitation
Velmore Hotel	Completed	Rehabilitation
Grace Point Church	Completed	Rehabilitation
Mmamelodi Pipeline	Completed	Rehabilitation

<b>Visual Impact Assessment</b>		
Swatzkop Industrial Developme	Completed	Assessment +DFA
Erasmia	Completed	Assessment

<b>Signage Application</b>		
Menlyn Advertising	Completed	Signage
The Villa Mall	Completed	Signage+EMP+BA



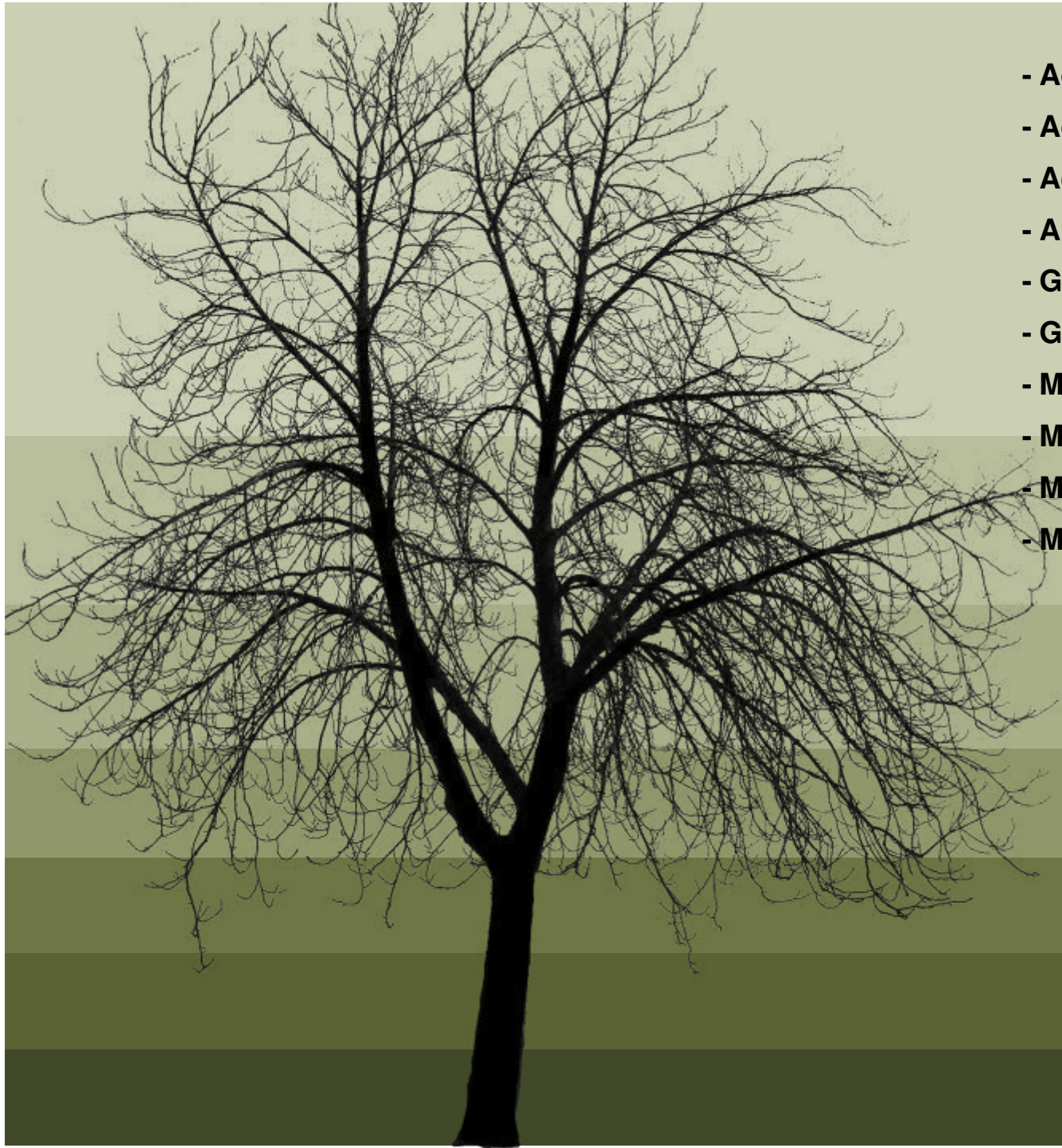
## 07 Current Environmental Projects

074 EMP, Rehabilitation , Waste Management & Signage Application

- Billion Property Group
- Cavaleros Developments
- Centro Developers
- Chaimberlains
- Chieftain
- Century Property Group
- Coca Cola
- Elmado Property Development
- Flanagan & Gerard
- Gautrans
- Hartland Property Group
- Moolman Group
- MTN
- M&T Development
- Old Mutual
- Property Investment Company
- Petroland Developments
- RSD Construction
- SAND
- Stephan Parsons
- Twin City Developments
- Urban Construction
- USN



**08** Indicative Clients



- Adobe Illustrator CS3
- Adobe Photoshop CS3
- Adobe InDesign CS3
- AutoCAD
- Google SketchUP
- GIS
- Microsoft Office Word
- Microsoft Office Excel
- Microsoft Office Publisher
- Microsoft Office Power Point

*Bokamoso* 

**Annexure D**  
**Public Participation**

**Annexure Di**  
**News paper advertisement**







# **Annexure Dii**

**Flyers distribution of Public Notice**

# NOTICE OF APPLICATION FOR ENVIRONMENTAL AUTHORISATION (ENVIRONMENTAL IMPACT ASSESSMENT) AND AVAILABILITY OF REVISED DRAFT SCOPING REPORT

Notice is hereby given that an application for environmental authorisation in terms of the EIA Regulations, 2014 (Regulations in terms of Chapter 6 of the National Environmental Management Act, 1998, as amended) will be lodged with the Gauteng Department of Agriculture and Rural Development (GDARD)

**Project Name:** The Proposed PWV 17 Freeway (between the proposed PWV 5 Freeway and the existing N4 Freeway)

## General Information:

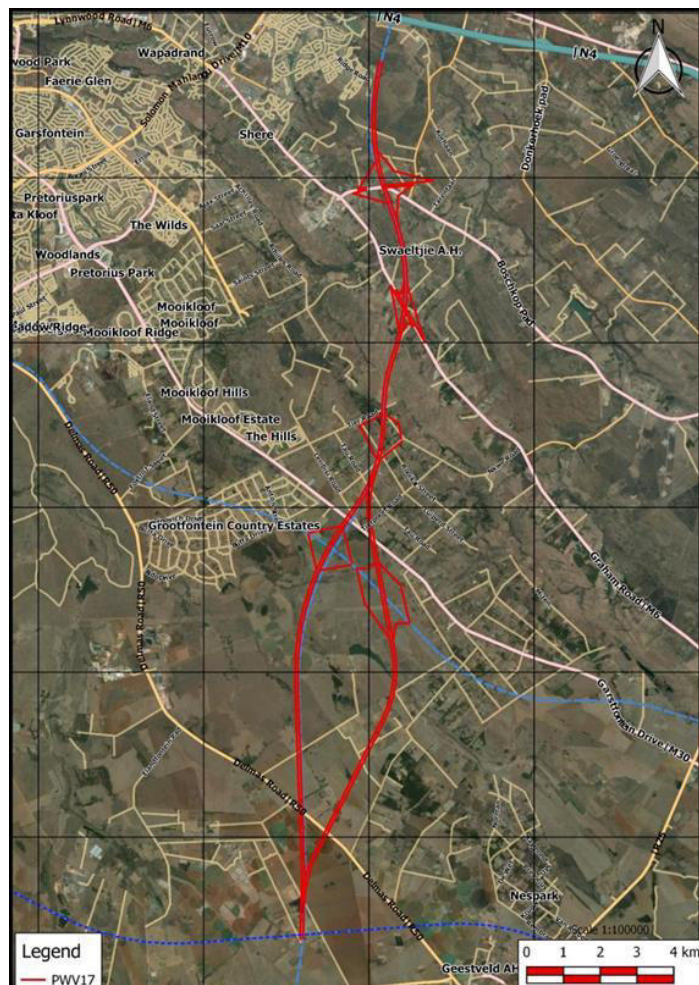
Take note that I&APs were already afforded an opportunity to register as I&AP during a first round of public participation for the involved section of the freeway. A first draft Scoping Report was also made available to GDARD, organs of state, stake holders etc. for comment, but due to the large amount of issues raised during the first round of public participation, it was decided to rather withdraw the application at GDARD and to compile a revised draft scoping report for the proposed freeway. This advertisement/ notice represents a repetition of the Scoping Phase advertisements/ notifications. Even though the relevant legislation provides for a 30-day registration period for I&APs, Bokamoso will accommodate issues raised by new I&APs throughout the entire EIA process (until the submission of the Final EIA).

**Property Description:** The proposed freeway will traverse/ affect the following farms & properties: Farm Tweefontein 19 JR; Farm Zwartkoppies 364 IR; Farm Mooiplaats 367 JR; Farm Tiegerpoort 371 JR; Farm Zwavelpoort 373 JR; Farm Grootfontein 394 JR; Farm Elandsfontein 412 JR; Farm Tweefontein 413 JR.; as well as Bashewa Holdings No 1 and 2 on the Farm Tweefontein 413. JR

**Listing Activities Applied for in terms of NEMA Regulations, 4 December 2014:** GNR 983 (Listing Notice 1) – Activity 12, 19, 21, 24 & 30; GNR 984 (Listing Notice 2) – Activity 15 & 27 and GNR 985 (Listing Notice 3) – Activity 4, 12 & 14. **(Listed Activities triggered will be confirmed during the application process)**

**Proponent Name:** Gauteng Department of Roads and Transport

**Location:** The proposed freeway will join the future planned PWV 5 road at a point located south of Delmas Road and east of Elandsfontein Road on the Farm Elandsfontien 412 (Ptn 75). It will then extend northwards intersecting the following roads: Garsfontein Road either on the Farm Grootfontein 394 (Ptn 1) or the Farm Tiegerpoort 371 (Ptns 2, 28, 245 and 235); Graham Road on the Farm Zwavelpoort 373 (Ptn 299 and RE/250); and Boschkop Road on the Farm Zwavelpoort (Ptn 43 and 34). The road then terminates at a point east of Silverlakes Drive and south of the N4 on the Farm Zwartkoppies 364



**Date of This Notice:** 17 November 2016 – 10 January 2017 (Excluding 15 December 2016 – 5 January 2017)

In order to ensure that you are identified and registered as an Interested and/or Affected Party (I&AP), please submit your name, contact information and interest in the matter, in writing, to the contact person given below **within 30 days from start date of this Notice**

The Revised Draft Scoping Report for the PWV 17 Freeway has been completed and it will be available to the public for scrutiny from Friday, 18 November 2016 until 3 February 2017. Take note that a proposed freeway requires applications subject to a **Scoping Process and Environmental Impact Assessment Process**.

**Queries regarding this matter should be referred to:**

**Bokamoso Landscape Architects and Environmental Consultants CC**

Public Participation Registration and Enquiries: **Juanita de Beer**.

Project Enquiries: **Bianca Cronjé**

Tel: (012) 346 3810

P.O. Box 11375

Fax: (086) 570 5659

Maroelana 0161

E-mail: reception@bokamoso.net

[www.bokamoso.net](http://www.bokamoso.net)

# Proposed PWV17 Road

Notice is given of an application for a **Scoping Environmental Impact Assessment Process** that was submitted to the Gauteng Department of Agriculture and Rural Development, in terms of Regulation No. R982 published in the Government Notice No. 38282 of 4 December 2014 of the National Environment Management Act, 1998 (Act No. 107 of 1998) governing Environmental Impact Assessment **Procedures (Notice 1, 2 & 3 – Government Notices R983, R984 & R985)** for the following activity:

**Project Name:** The Proposed PWV 17 Road.

**Property Description:** To be located on the following Farms: Farm Tweefontein 19 JR; Farm Hatherley 331 JR; Farm Zwartkoppies 364 IR; Farm Mooiplaats 367 JR; Farm Tiegerpoort 371 JR; Farm Zwavelpoort 373 JR; Farm Grootfontein 394 JR; Farm Elandsfontein 412 JR; Farm Tweefontein 413 JR.; as well as Bashewa Holdings No 1 and 2 on the Farm Tweefontein 413. JR.

**Proponent Name:** Gauteng Department of Roads and Transport.

**Listing Activities Applied:** GNR 983 (Listing Notice 1), 4 December 2014 – Activity 12,19, 30 GNR 984 (Listing Notice 2), 4 December 2014 – Activity 15, 27 and GNR 985 (Listing Activity 3), 4 December 2014 – Activity 4, 12, 14. (Listed Activities triggered will be confirmed during the application process)

**Location:** The proposed freeway will join the future planned PWV 5 road at a point located south of Delmas Road and east of Elandsfontein Road on the Farm Elandsfontien 412 (Ptn 75). It will then extend northwards intersecting the following roads: Garsfontein Road either on the Farm Grootfontein 394 (Ptn 1) or the Farm Tiegerpoort 371 (Ptns 2, 28, 245 and 235); Graham Road on the Farm Zwavelpoort 373 (Ptn 299 and RE/250); and Boschkop Road on the Farm Zwavelpoort (Ptn 43 and 34). The road then terminates at a point east of Silverlakes Drive and south of the N4 on the Farm Zwartkoppies 364. The proposed road will not intersect the N4 but will join a future planned PWV road which will run parallel to the N4.

**Date of Notice:** 12 November 2015 to 11 December 2015

**Queries regarding this matter should be referred to:**

Bokamoso Landscape Architects and Environmental Consultants CC

Public Participation registration and Enquiries: **Juanita de Beer.**

Project Enquiries: **Nadine Duncan**

Tel: (012) 346 3810

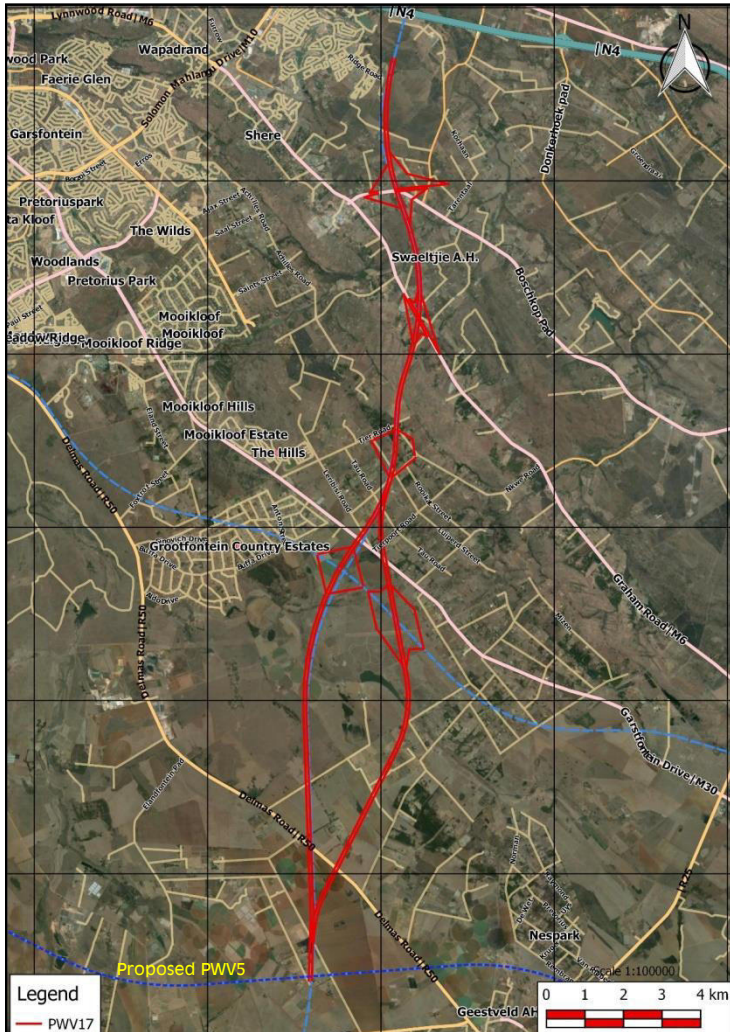
P.O. Box 11375

Maroelana 0161

**www.bokamoso.biz**

Fax: (086) 570 5659

E-mail: reception@bokamoso.net



## Aerial Map

In order to ensure that you are identified as an Interested and/or Affected Party (I&AP) please submit your name, contact information and interest in the matter, in writing, to the contact person given above **within 30 days of this Notice.**



LEBOMBO GARDEN BUILDING  
36 LEBOMBO ROAD  
ASHLEA GARDENS  
0081

P.O. BOX 11375  
MAROELANA  
0161

Tel: (012) 346 3810  
Fax: 086 570 5659  
E-mail: lizelleg@mweb.co.za  
Website: www.bokamoso.biz



**Dear Landowner/Tenant**

**13 November 2015**

You are hereby informed that Bokamoso Environmental Consultants were appointed (as EAP) by the Gauteng Department of Roads and Transport to conduct the Environmental Impact Assessment Process in terms of the amended 2014 NEMA EIA Regulations for the proposed PWV17 Road on various Portions of the Farms Tweefontein 19, Hatherley 331, Zwartkoppies 364, Mooiplaats 367, Tiegerpoort 371, Zwavelpoort 373, Grootfontein 394, Elandsfontein 412, Tweefontein 413, as well as Bashewa Holdings No. 1 and 2 on Portion 119 of the Farm Tweefontein 413.

**The proposed project is as follows:**

The Proposed PWV17 Road.

In terms of Regulation No. R982 published in the Government Notice No. 38282 of 4 December 2014 of the National Environment Management Act, 1998 (Act No. 107 of 1998) Governing Environmental Impact Assessment Procedures (Notice 1 – Governing Notice R983, Notice 2 – Governing Notice R984 and Notice 3) Governing Notice R985 of the 2014 amended NEMA Regulations, the EAP must inform all landowners and tenants within 100m from the study area of the proposed development.

This letter serves as notification to you, the landowner / tenant of the property located within a 100m of the proposed activity and as request that you supply the contact details of any tenants or other interested and affected parties that reside or work on the property to Bokamoso. Bokamoso will then also supply these parties with the necessary notification letters.

Alternatively, you are also welcome to distribute copies of your notification to these parties. We will however require proof that you supplied the notices to the tenants, landowners, workers etc. Another option is to act as representative on behalf of these parties.

Please confirm, **within 30 days**, (via email/fax) that you received the landowners/tenant notification. Also indicate in this confirmation letter whether you have tenants on your property and you're preferred method of tenant/worker notification.

Regards

.....  
Lizelle Gregory/Juanita De Beer

Name

Contact

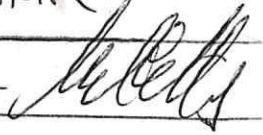
Email

Signature

ELLIS

MR ELLIS

marlowe.g.@gmail.com



# PWV17 Landowner Notification

Acknowledgement of Receipt of land owner notification concerning the proposed PWV 17 project.

	Name	Address	Contact Details	Signature
1	STUART GRADY	Plot 37 Tiegopark	Email: Fax: Tel: 0832921577	
2	Karin Jaffy	Plot 29 Tiegopark	Email: Fax: Tel: 082 2196266	
3	G.M. OIKERS	Plot 28 GEP.	Email: gmoikers@gmail.com Fax: Tel: 0832689496	
4	Nicky 28 Vla Westhuizen		Email: Fax: Tel:	
5	Tierpoort Petrol Stasie		Email: Fax: Tel:	
6	Eveli Nel	Plot 92 Tau STF	Email: Fax: Tel:	
7	ONT SYDOON	Plot 166 TIEAR	Email: Fax: Tel: 0799223615	
8	Vintage Pawling	Plot 398 Oudtshoorn rd	Email: Fax: Tel: 0725577822	
9	Kwilekery Pine Anna Goosen	082600776 0836001909	Email: pine@ Fax: kleinfontein Tel: - net - Psoose	
10	M. Rensburg	Plot 39	Email: margjvr@fclkom5a.net Fax: 0860448477 Tel: 0796209373	
11	STOORPARK B.H. VENTER	Plot 424	Email: stoorpark@mweb.co.za Fax: Tel: 082 494 2353	
12	Celeste GIBBONS	Plot 34	Email: csdine@union Fax: cateres.co.za Tel: 0828576980	
13	A. de Bruyn	Plot 254 Zuurvallei	Email: Buisson's Fax: YALD@TBY.CO.ZA Tel: 0820400350	
14	H. Myburgh	Plot 164 Mooipark	Email: Fax: Tel: 0834131540	
15	Curro College J. Soubert	Ridge Way 1, Silverlakes Road	Email: Fax: Tel: 012 809 8914	

inter  
Pubs

# PWV17 Landowner Notification

Acknowledgement of Receipt of land owner notification concerning the proposed PWV 17 project.

	Name	Address	Contact Details	Signature
1	Mr - Janber Oubrag / Estate		Email: Fax: Tel: 0746132381	
2			Email: Fax: Tel:	
3			Email: Fax: Tel:	
4			Email: Fax: Tel:	
5			Email: Fax: Tel:	
6			Email: Fax: Tel:	
7			Email: Fax: Tel:	
8			Email: Fax: Tel:	
9			Email: Fax: Tel:	
10			Email: Fax: Tel:	
11			Email: Fax: Tel:	
12			Email: Fax: Tel:	
13			Email: Fax: Tel:	
14			Email: Fax: Tel:	
15			Email: Fax: Tel:	

Name

Email & Fax

Contact

Sign

JF Joostis

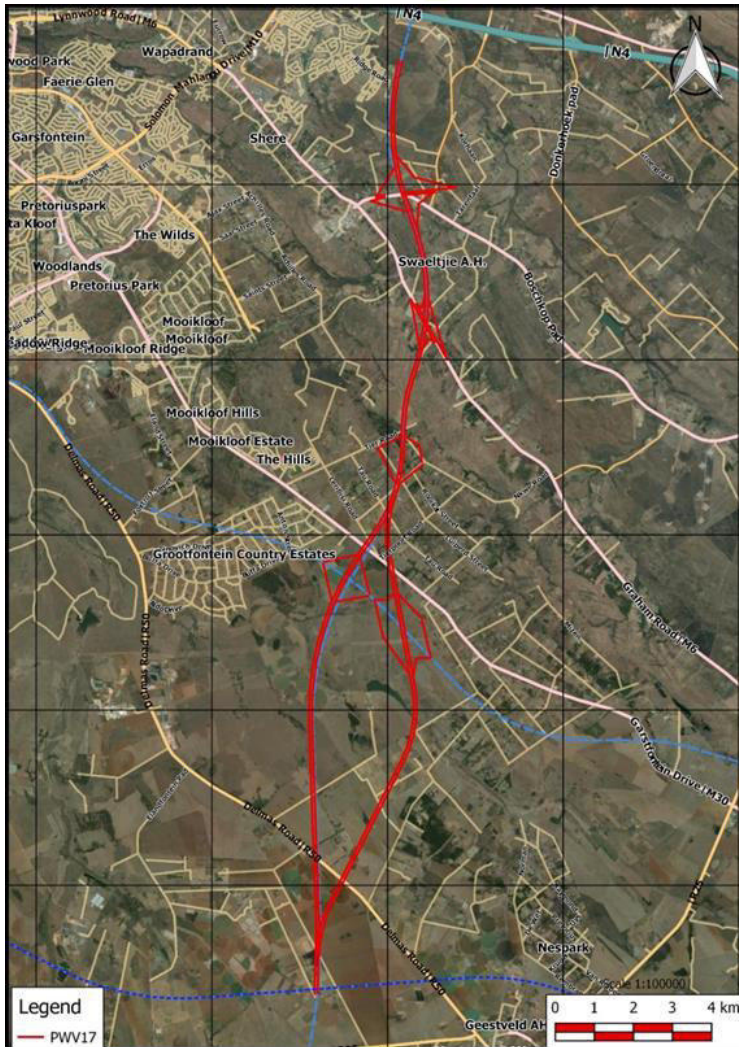
Admin @ 83.  
Co. 2A

0828012113





# PWV17 Draft Scoping Report for Review



All interested and affected parties are invited to review the development information and to register any issues and concerns to be included and addressed in the Final Basic Scoping Report.

**Venue:** Plantland The Wilds

**Address:** Cnr of Atterbury and Olympus Drive, Faerie Glen

**Tel:** 012 991 3061

**Date:** 25 February – 29 March 2016

**Also available on our Website:**

**[www.bokamoso.biz](http://www.bokamoso.biz) / [www.bokamoso.net](http://www.bokamoso.net)**

Please do not hesitate to contact us if there are any questions in connection with the abovementioned development.

Contact person: **Juanita De Beer**

Tel: 012 346 3810 Fax: 086 570 5659

E-mail: [lizelleg@mweb.co.za](mailto:lizelleg@mweb.co.za)

# **Annexure Div**

**A second advertisement newspaper**

**The new Public Participation Process  
Newspaper Advertisement will be  
included in the Final Scoping Report.**

## **Annexure Dv**

**Site notices were erected (at prominent points on and around the study area) on 14 November 2016**

# NOTICE OF APPLICATION FOR ENVIRONMENTAL AUTHORISATION (ENVIRONMENTAL IMPACT ASSESSMENT) AND AVAILABILITY OF REVISED DRAFT SCOPING REPORT

Notice is hereby given that an application for environmental authorisation in terms of the EIA Regulations, 2014 (Regulations in terms of Chapter 6 of the National Environmental Management Act, 1998, as amended) will be lodged with the Gauteng Department of Agriculture and Rural Development (GDARD)

**Project Name:** The Proposed PWV 17 Freeway (between the proposed PWV 5 Freeway and the existing N4 Freeway)

## General Information:

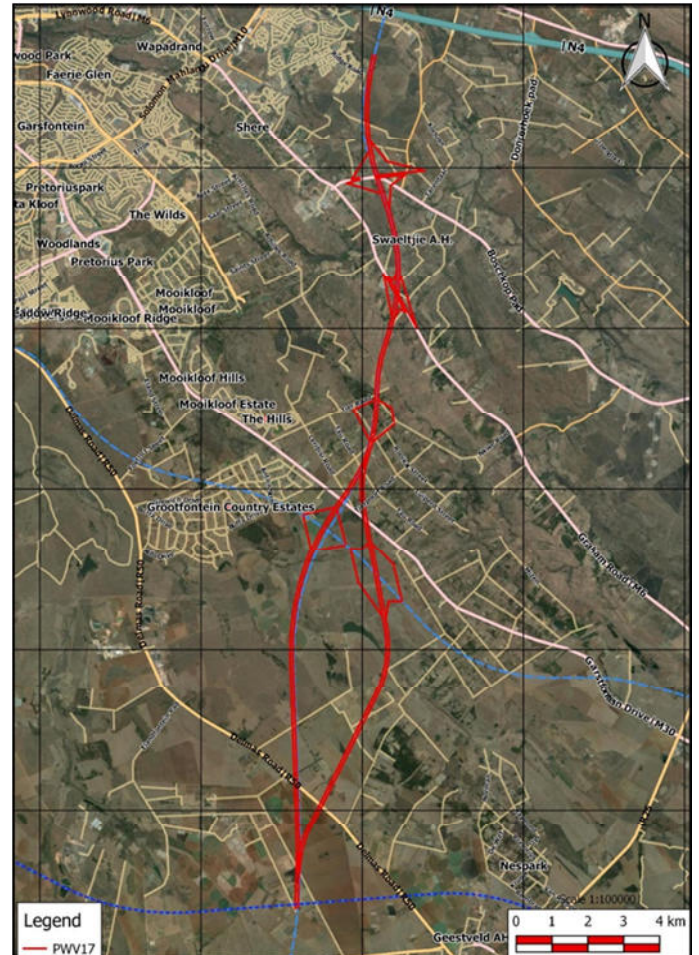
Take note that I&APs were already afforded an opportunity to register as I&AP during a first round of public participation for the involved section of the freeway. A first draft Scoping Report was also made available to GDARD, organs of state, stake holders etc. for comment, but due to the large amount of issues raised during the first round of public participation, it was decided to rather withdraw the application at GDARD and to compile a revised draft scoping report for the proposed freeway. This advertisement/ notice represents a repetition of the Scoping Phase advertisements/ notifications. Even though the relevant legislation provides for a 30-day registration period for I&APs, Bokamoso will accommodate issues raised by new I&APs throughout the entire EIA process (until the submission of the Final EIA).

**Property Description:** The proposed freeway will traverse/ affect the following farms & properties: Farm Tweefontein 19 JR; Farm Zwartkoppies 364 IR; Farm Mooiplaats 367 JR; Farm Tiegerpoort 371 JR; Farm Zwavelpoort 373 JR; Farm Grootfontein 394 JR; Farm Elandsfontein 412 JR; Farm Tweefontein 413 JR.; as well as Bashewa Holdings No 1 and 2 on the Farm Tweefontein 413. JR

**Listing Activities Applied for in terms of NEMA Regulations, 4 December 2014:** GNR 983 (Listing Notice 1) – Activity 12, 19, 21, 24 & 30; GNR 984 (Listing Notice 2) – Activity 15 & 27 and GNR 985 (Listing Notice 3) – Activity 4, 12 & 14. **(Listed Activities triggered will be confirmed during the application process)**

**Proponent Name:** Gauteng Department of Roads and Transport

**Location:** The proposed freeway will join the future planned PWV 5 road at a point located south of Delmas Road and east of Elandsfontein Road on the Farm Elandsfontien 412 (Ptn 75). It will then extend northwards intersecting the following roads: Garfontein Road either on the Farm Grootfontein 394 (Ptn 1) or the Farm Tiegerpoort 371 (Ptns 2, 28, 245 and 235); Graham Road on the Farm Zwavelpoort 373 (Ptn 299 and RE/250); and Boschkop Road on the Farm Zwavelpoort (Ptn 43 and 34). The road then terminates at a point east of Silverlakes Drive and south of the N4 on the Farm Zwartkoppies 364



**Date of This Notice:** 17 November 2016 – 10 January 2017 (Excluding 15 December 2016 – 5 January 2017)

In order to ensure that you are identified and registered as an Interested and/or Affected Party (I&AP), please submit your name, contact information and interest in the matter, in writing, to the contact person given below **within 30 days from start date of this Notice**

The Revised Draft Scoping Report for the PWV 17 Freeway has been completed and it will be available to the public for scrutiny from Friday, 18 November 2016 until 3 February 2017. Take note that a proposed freeway requires applications subject to a **Scoping Process and Environmental Impact Assessment Process**.

**Queries regarding this matter should be referred to:**

**Bokamoso Landscape Architects and Environmental Consultants CC**

Public Participation Registration and Enquiries: **Juanita de Beer**.

Project Enquiries: **Bianca Cronjé**

Tel: (012) 346 3810

P.O. Box 11375

Fax: (086) 570 5659

Maroelana 0161

E-mail: reception@bokamoso.net

[www.bokamoso.net](http://www.bokamoso.net)



