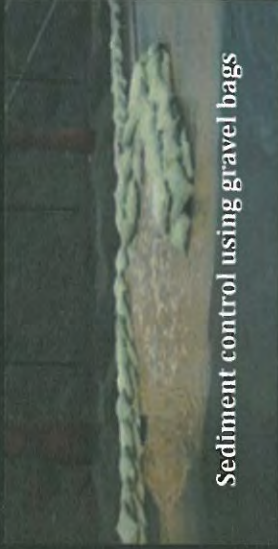


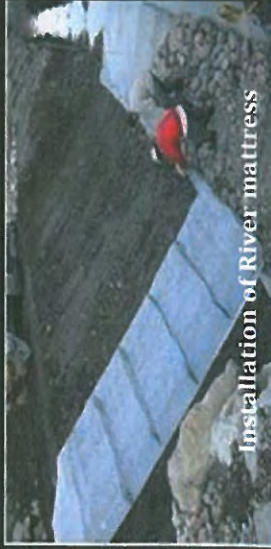


**MYEZO ENVIRONMENTAL  
MANAGEMENT SERVICES [Pty] Ltd**  
*Environmental Stewardship*

## OPERATIONAL PHASE **Potential impacts identified**



Sediment control using gravel bags



Installation of River mattress



Stone Gabions construction and installation



Stone Gabions construction and installation



Preventing overgrazing of wetland vegetation



Treating footpaths using organic mulch



Addressing illegal dumping through river clean ups



Clearing of debris in water, clearing of blocked culverts and more





MYEZO ENVIRONMENTAL  
MANAGEMENT SERVICES (Pty) Ltd  
*Environmental Stewardship*

## OPERATIONAL PHASE:

### Potential Environmental impacts

#### ACTIVITIES:

- Mulching of slopes and banks –
  - ✓ Stabilisation of slopes using geotextile;
  - ✓ seeding slopes to get them ready for mulching; Harvesting of trees for mulching,
  - ✓ Layering slopes with mulch)



Large sections of eroded banks in Orlando West Park section of WMU – Zone 2

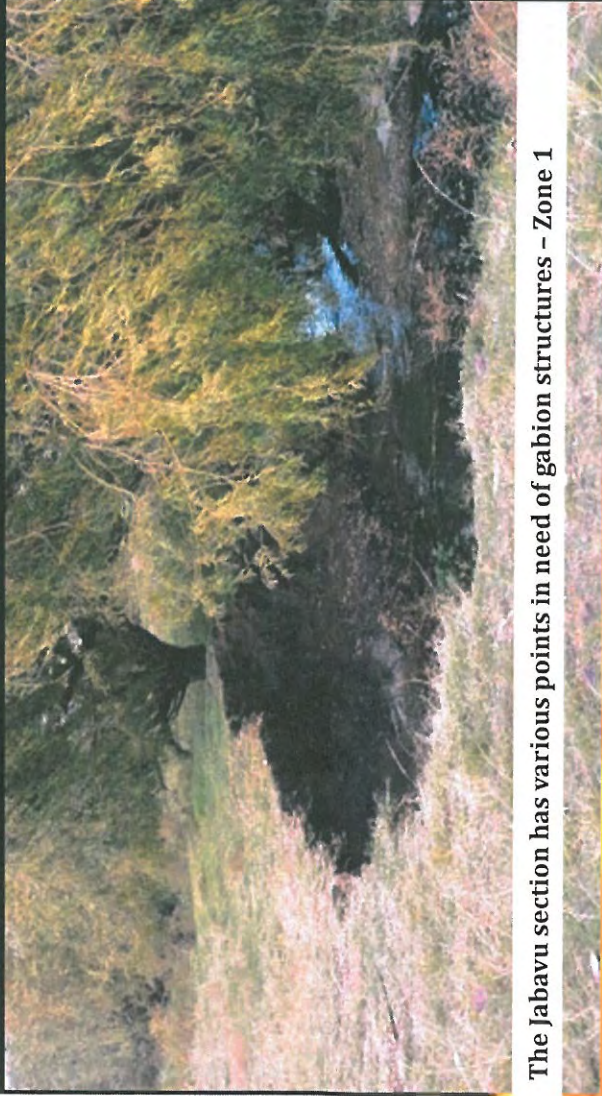


## OPERATIONAL PHASE:

### Potential Environmental impacts

#### ACTIVITIES

- Installation of soil erosion fences and Gabion Structures - Box Gabions



The Jabavu section has various points in need of gabion structures – Zone 1



Box gabions can be used to stabilise river banks



## OPERATIONAL PHASE:

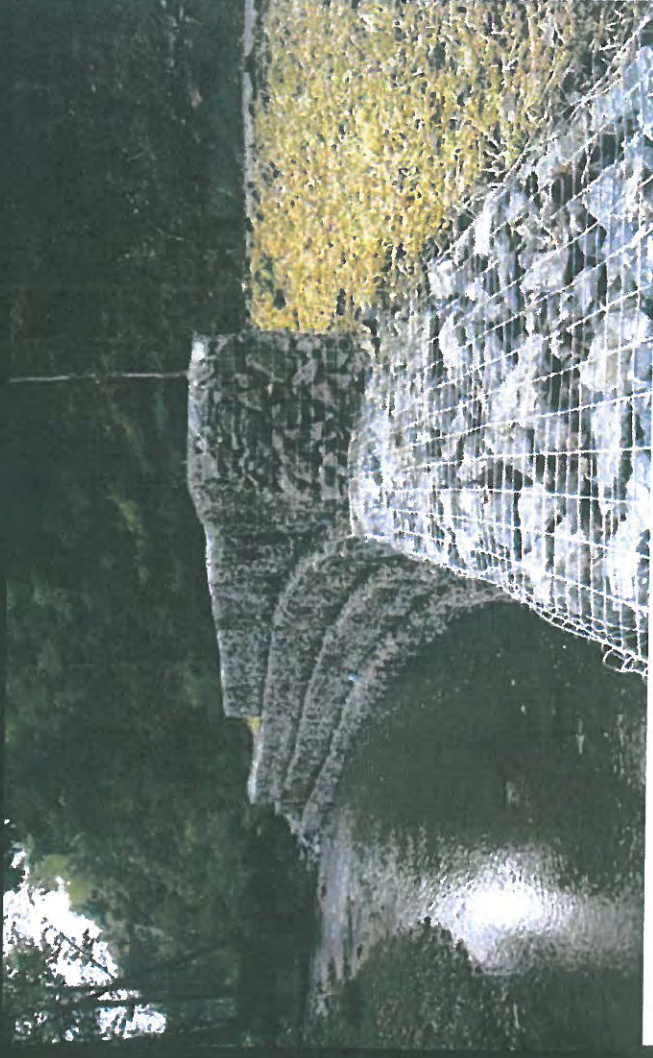
### Potential Environmental impacts

#### ACTIVITIES

- Installation of soil erosion fences and Gabion Structures – Gabion Baskets



Various sections on the Klipspruit Valley Road to Chris Hani Road are eroded and need gabion support - Zone 2



Gabion baskets can be used to stabilise banks



## OPERATIONAL PHASE:

### Potential Environmental impacts

#### ACTIVITIES

- Installation of soil erosion fences and Gabion Structures - Gabion Mattress



Gabion collapse and erosion at Dorothy Nyembe Park – Zone 3



Gabion mattress can be useful at this particular slope as it is slanting.

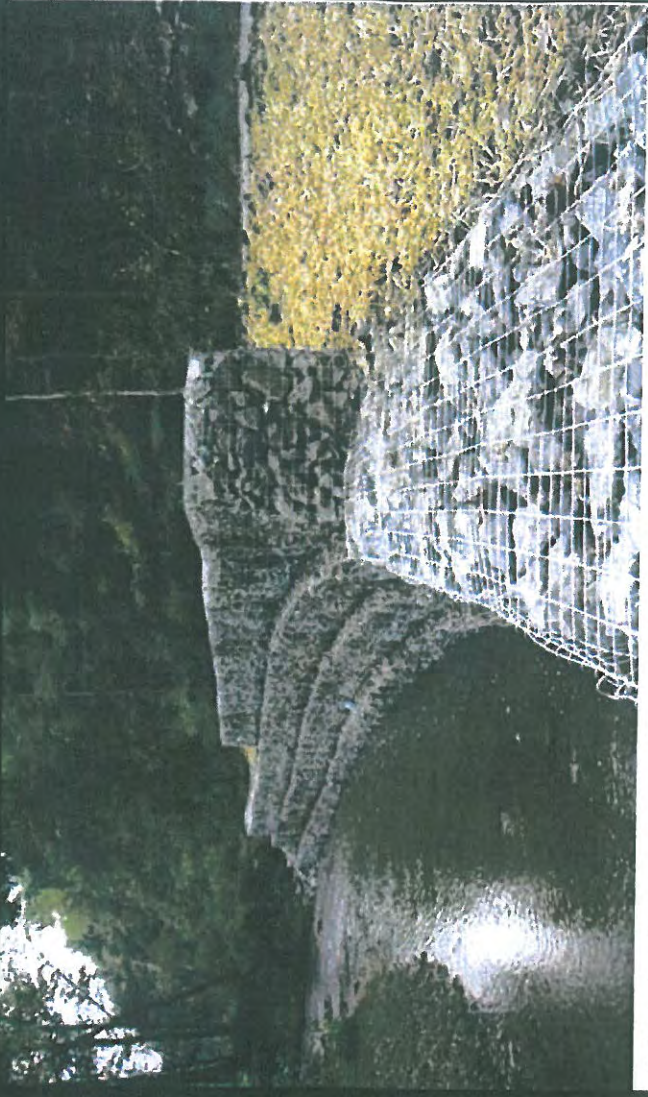


## OPERATIONAL PHASE:

### Potential Environmental impacts

#### IMPACTS:

- Impact posed by damage to bank and slopes through excavation of topsoil for -Installation of metal stakes for fence (iron standard fence and wire netting) by digging holes on ground or slope;
- trampling
- Dredging for installation of gabions;



Gabion baskets can be used to stabilise banks

diversion of riparian vegetation  
impeding of water flow



## **OPERATIONAL PHASE:**

### **Potential Environmental impacts**

#### **MITIGATION MEASURES:**



**Gabion baskets can be used to stabilise banks**

uction of gabion structures,

ight, shape and foundation will be relevant to site being

neers will be consulted on appropriate gabion structures and

are installed properly, vegetation will regrow and sedimentation and  
se.

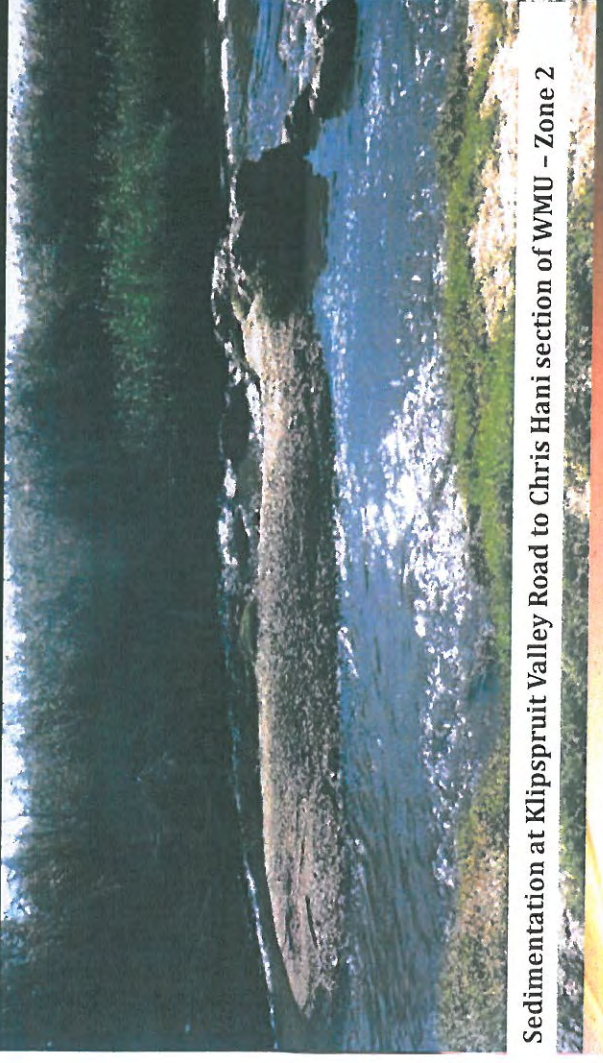


## OPERATIONAL PHASE:

### Potential Environmental impacts

#### ACTIVITIES

- Sediment control – gravel bags



Sedimentation at Klipspruit Valley Road to Chris Hani section of WMU – Zone 2



Use of gravel bags to combat sedimentation





## OPERATIONAL PHASE:

### Potential Environmental impacts

#### IMPACTS:

- Alteration of the river bank and impeding water flow,
- Changing the watercourse.
- Siltation & sedimentation. Vegetation removal,
- Altering the river bank and impeding structures
- Clogging of gravel bags resulting in poor water quality,

Gravel changing flow  
bursting of gravel bags.



Use of gravel bags to combat sedimentation



## OPERATIONAL PHASE:

### Potential Environmental impacts

#### MITIGATION MEASURES:

- ✓ Re-vegetation of indigenous species will be implemented
- ✓ The gravel bags inspection - prior to forecast rain, during extended rain events, after rain events and weekly during the rainy season.
- ✓ Replace gravel bags exposed to sunlight for a prolonged period every three months
- ✓ the bags will need to be reshaped and replaced as needed;
- ✓ Remove sediment that will accumulate in the bags periodically in order to maintain the effectiveness of the bags.
- ✓ Inspection and maintenance must be carried out throughout the lifespan of the process.



Use of gravel bags to combat sedimentation



**MYEZO ENVIRONMENTAL  
MANAGEMENT SERVICES [Pty] Ltd**  
*Environmental Stewardship*

## OPERATIONAL PHASE:

### Potential Environmental impacts

#### ACTIVITIES

- Invasive alien species control



Alien invasive species in permanent zone of wetland in Moroka Dam – Zone 1



## OPERATIONAL PHASE: Potential Environmental impacts

### **IMPACTS:**

- Soil roughness
- Exposure of soil, increased erosion levels due to run-off of water.
- Little precipitation and evaporation, loss of habitat life, reduced water table levels
- Soil disturbance;
- soil and water contamination from petrol or oil (if using mechanised method and herbicides);
- death of aquatic life due to water contamination;
- riparian zone disturbance; death of non-target species

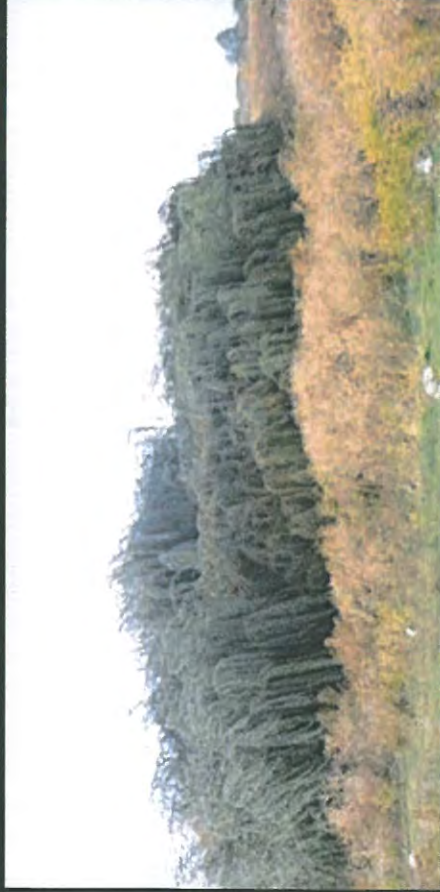


## OPERATIONAL PHASE:

### Potential Environmental impacts

#### MITIGATION MEASURES:

- ✓ manual removal using mechanised tools effective to remove dense stands of aliens;
- ✓ manual removal only effective in areas with low infestations;
- ✓ Herbicides must only be sprayed during active growing of plants;
- ✓ Plants need to be sprayed before the seeds are produced (namely between flowering and fruit set);
- ✓ herbicides must not be applied during the wet seas (before or after rain) as they will wash away into rivers and watercourses and contaminate them;
- ✓ biocontrol agents that may threaten commercial populations of target species that exist nearby
- ✓ Re-vegetation of indigenous species will be implemented as a mitigation measure.



Alien invasive *Salix* species with weed invader *Tagetes minuta* on river bank and permanent zone of wetland



## OPERATIONAL PHASE:

### Potential Environmental impacts

#### ACTIVITIES

- Address livestock overgrazing



Overgrazing was also observed on a large scale on the seasonal and temporal zone of the wetland (Orlando West Zone 2).



## OPERATIONAL PHASE:

### Potential Environmental impacts

#### **IMPACTS:**

- Vegetation,
- soil,
- water quality

- ✓ Determine the area grazing capacity.
- ✓ Research on grass and tree species to be planted.
- ✓ Remove invasive alien species.
- ✓ Re-vegetate area with seedlings of preferred indigenous species.
- ✓ Fence off special areas for grazing.
- ✓ Develop a livestock grazing management with specific time slots and durations.
- ✓ Develop strict procedures and systems to be in place for effective management of overgrazing.
- ✓ In an area like Soweto where regular monitoring of grazing in wetlands is not possible, a fixed rotational grazing system of 14 days in and 24 days out of the wetland must be applied.
- ✓ Discontinue all grazing when soils are waterlogged (as this is when erosion begins) until waterlogging ceases.
- ✓ When rotational grazing is applied, this means that trampling will also be minimised.



## OPERATIONAL PHASE:

### Potential Environmental impacts

#### IMPACTS:

- Vegetation,
- soil,
- water quality

- ✓ Determine the area grazing capacity.
- ✓ Research on grass and tree species to be planted.
- ✓ Remove invasive alien species.
- ✓ Re-vegetate area with seedlings of preferred indigenous species.
- ✓ Fence off special areas for grazing.
- ✓ Develop a livestock grazing management with specific time slots and durations.
- ✓ Develop strict procedures and systems to be in place for effective management of overgrazing.
- ✓ In an area like Soweto where regular monitoring of grazing in wetlands is not possible, a fixed rotational grazing system of 14 days in and 24 days out of the wetland must be applied.
- ✓ Discontinue all grazing when soils are waterlogged (as this is when erosion begins) until waterlogging ceases.
- ✓ When rotational grazing is applied, this means that trampling will also be minimised.





## DECOMMISSION PHASE:

### Potential Environmental impacts

#### **ACTIVITIES:**

##### **Site Closure**

- Demolish construction camp on site without impact to environment
- Remove any soil or plant material stockpiles
- Demolish the temporal plant and seedlings nursery
- Site clean up must be undertaken
- Remove all waste material types and dispose properly and at registered landfill site.
- All equipment and machinery must be properly removed from site
- Remove all sanitation facilities from site
- Ensure the closed site does not present any safety risk to human or environment
- Ensure proper project handover to relevant community authorities for monitoring and maintenance



## **DECOMMISSIONING PHASE:**

### **Potential Environmental impacts**

#### **IMPACTS:**

- Soil disturbance and exposure from demolition works
- Visual impact - Dust generation due to demolition works
- Loss of soil and vegetation
- Soil pollution and groundwater pollution
- Water quality impacts of demolition works near water features
- Construction noise - Demolition activity will generate noise from vehicles, machinery, equipment and personnel
- Loss of income to temporary employed community members

#### **MITIGATION MEASURES:**

- ✓ Implement proper site closure procedures and guidelines as per the approved EMPr
- ✓ Engage municipality Parks and Environment Departments responsible for maintenance of wetlands and parks in the area to provide opportunities to the trained community members. The team members might be used in the monitoring of the rehabilitated areas and future wetland rehabilitation programmes to be implemented by the municipality.



## Potential Environmental impacts

- **Potential impacts were identified within each Zone and at each PHASE of the Rehabilitation Process**

**For Example:**

**WHAT ARE THE IMPACTS ? -**

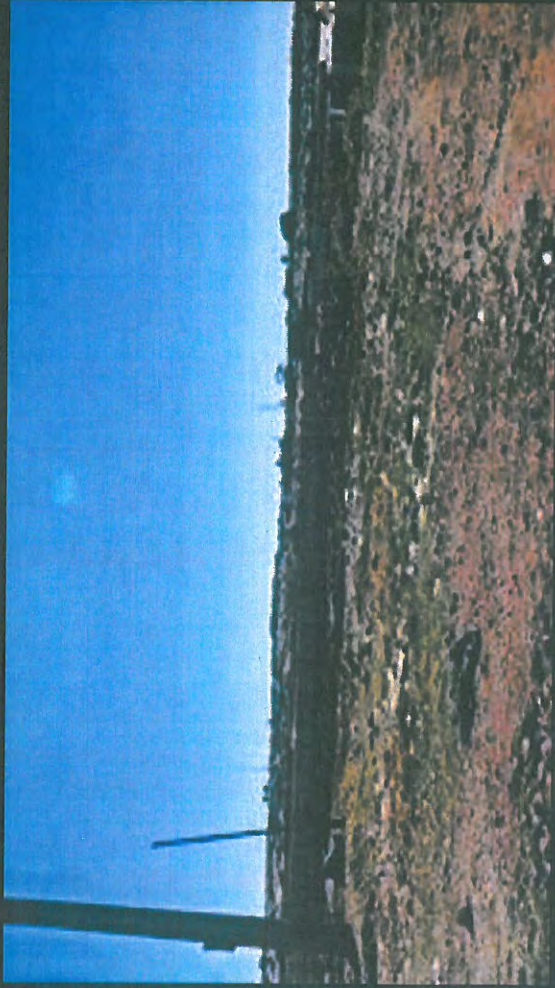
- **PLANNING & DESIGN PHASE**
- **CONSTRUCTION PHASE**
- **OPERATIONAL PHASE**
- **DECOMMISSIONING PHASE**



**MYEZO ENVIRONMENTAL  
MANAGEMENT SERVICES [Pty] Ltd**  
*Environmental Stewardship*

## Potential Environmental impacts

- **A threat to the biodiversity due to Illegal dumping**





**MYEZO ENVIRONMENTAL  
MANAGEMENT SERVICES [Pty] Ltd**  
*Environmental Stewardship*

## Potential Environmental impacts

- **A threat to the biodiversity due to Illegal dumping**



Round culverts blocked with litter in Thokoza Park in Zone 1.



Solid Waste Disposal along river near Orlando West Park in Zone 2.



Solid waste dumping at stream 3 within Dorothy Nyembe Park in Zone 3.



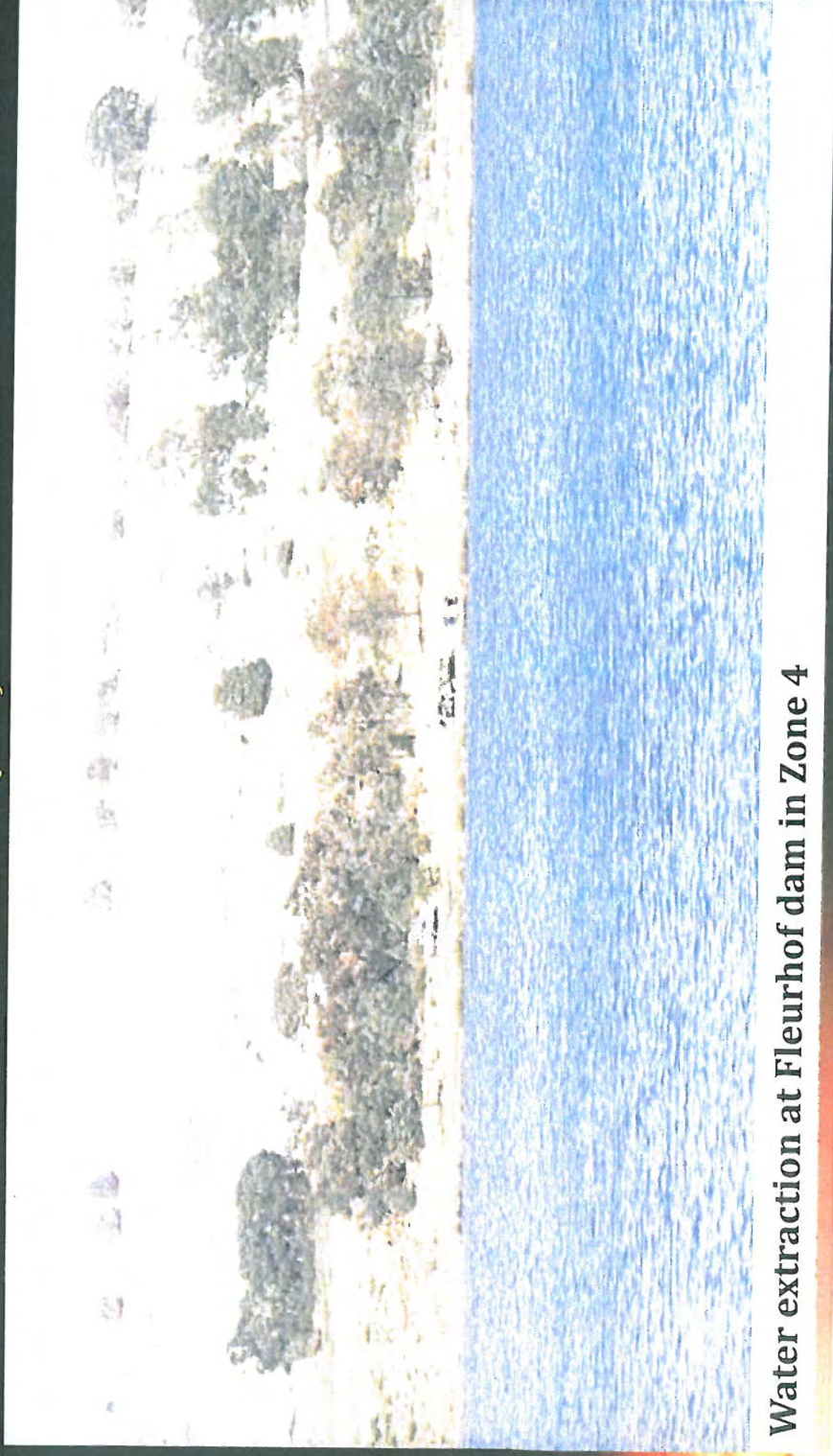
Illegal dumping near the Fleurhof Dam in Zone 4 (WP 924)



**MYEZO ENVIRONMENTAL  
MANAGEMENT SERVICES [Pty] Ltd**  
*Environmental Stewardship*

## Potential Environmental Impacts (cont..)

- The extraction of water from a water body requires a water use licence from the Department of Water and Sanitation. (DWS)



**Water extraction at Fleurhof dam in Zone 4**



## Specialist studies

Completed specialist studies :

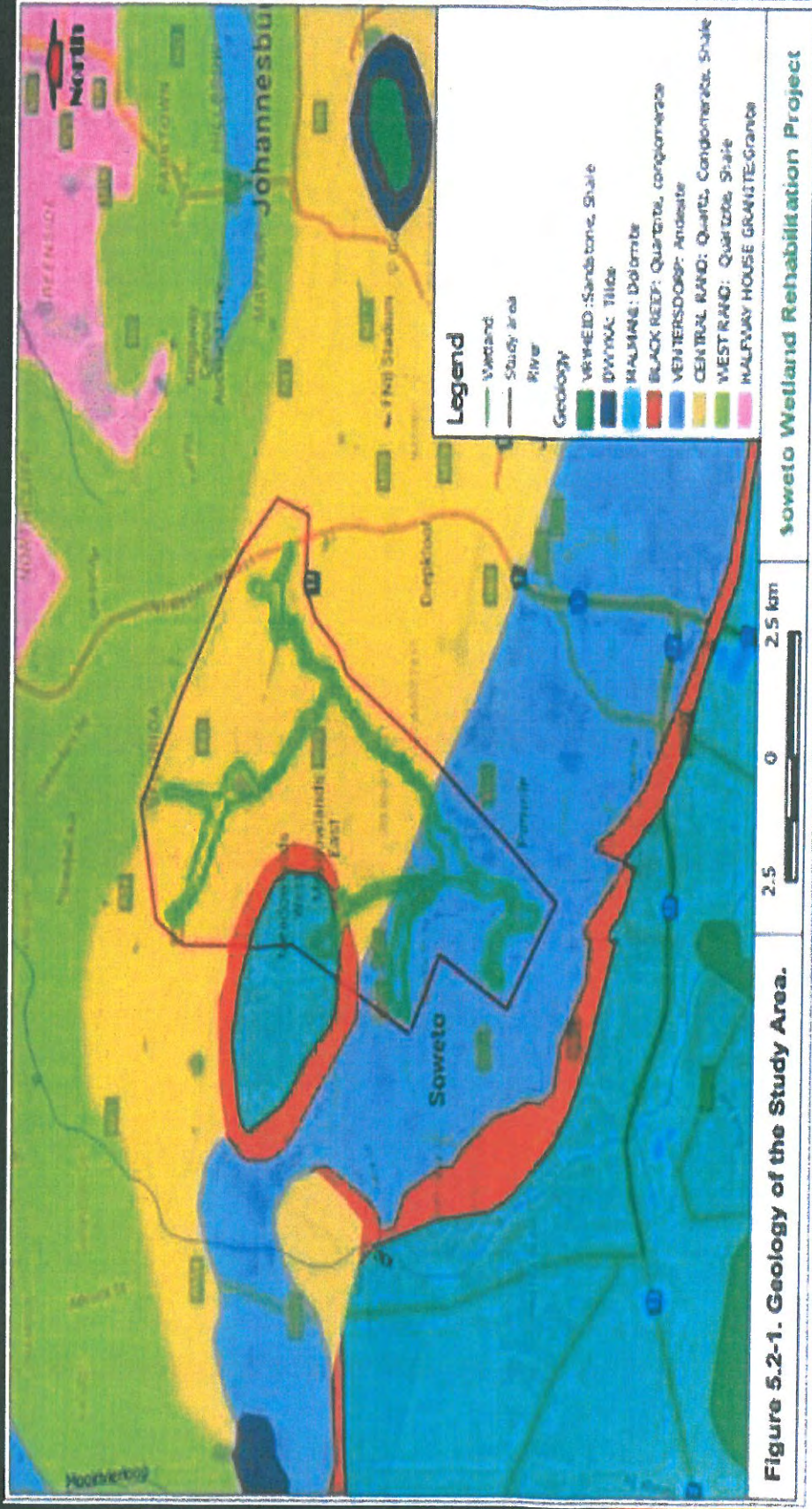
- Geological studies
- Geohydrology studies
- Hydrological studies
- Wetland and Biodiversity studies
- GIS Studies
- Heritage studies
- Landscaping

❖ See terms of reference for each study .



## Findings of the Specialist studies :

- **Geology studies**







## Findings of the Specialist studies :

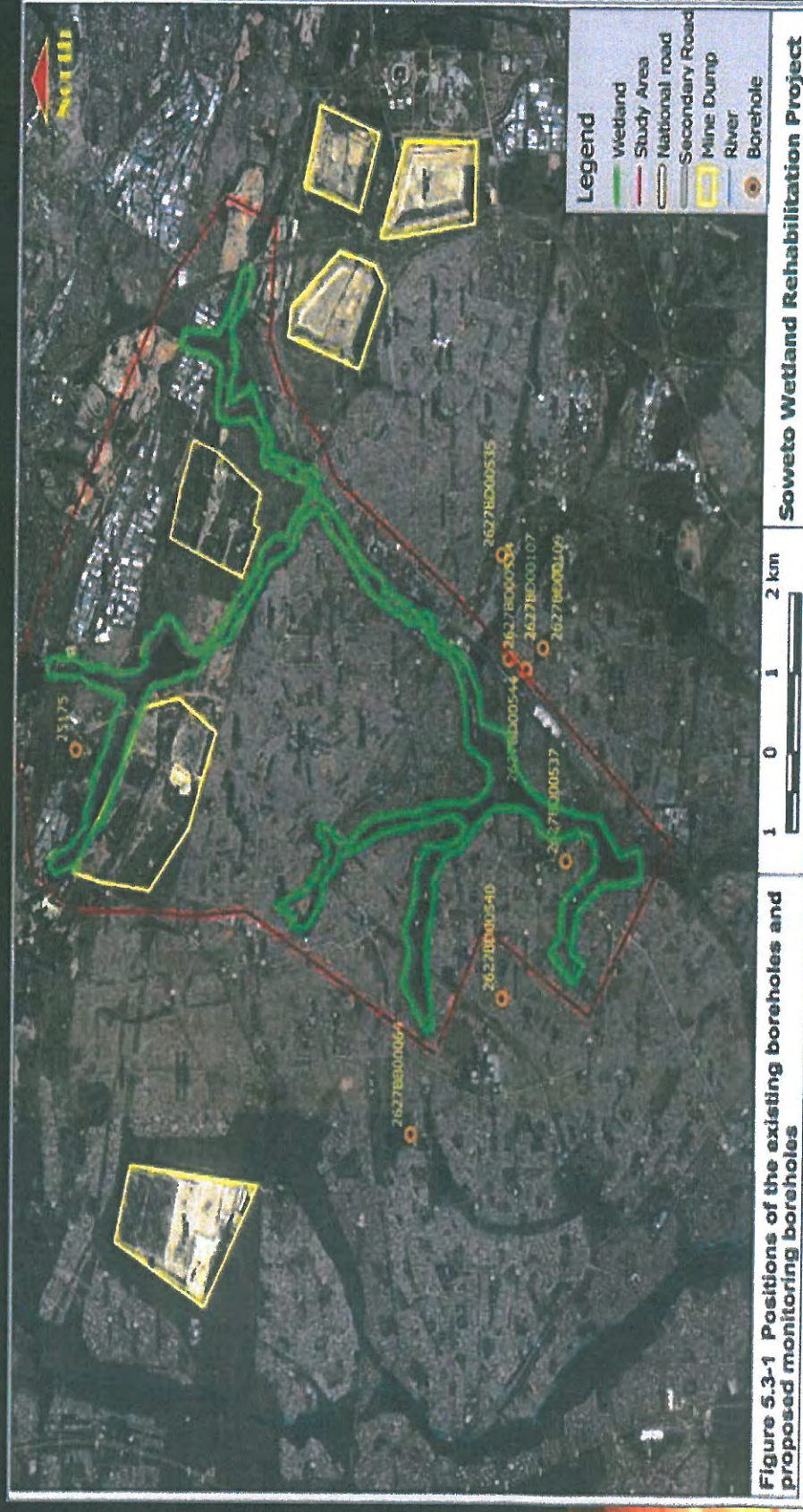
- **Geology studies**
  - The study area is underlain by predominantly both the sedimentary (shale, sandstone and conglomerate) and igneous rocks (andesite).
  - These rocks possess low primary permeability and porosity.
  - The Geological composition of the study area consists of oldest rocks belonging to the Archean Basement complex represented by the Halfway House granites.
  - Locally the site is underlain by the andesite of the Ventersdorp Group in the south and quartzite, conglomerate and shale of the Transvaal Group in the northern section. These rocks have been late Karoo dolerite dykes and sills.





## Findings of the Specialist studies :

- **Geohydrology studies**





## Findings of the Specialist studies :

- **Geohydrology studies**

- Groundwater occurrence generally associated with fractures and joints developed along bedding planes in former, weathering and fracturing in the later.
- Contact zones between dolerite intrusions and the country rocks represent good aquifers due to the presence of shrinkage fractures that developed as the dolerite magma rapidly cooled on contact with the cooler country rocks.
- The groundwater potential is classified as low;
- Borehole yields generally less than 2 L/s, (Barnard, 2000).
- Groundwater recharge in the study area is estimated at 95 mm per annum. The harvest potential of the area, which indicates the maximum volume of that can sustainably be abstracted per square kilometre per annum, is estimated at 11 200m<sup>3</sup>/km<sup>2</sup>/annum (Vegter, 1995).



## Findings of the Specialist studies :

- **Soils**

- The area is dystrophic and mesotrophic, with red soil not widespread in an area of 86780 hectares.
- Black Arcadia shallow soils are also indicated on the site.
- This soil hue is classified as 5YR 5/8.
- The soil type according to Soil classification: a binomial system of South Africa, 1977, fall under **yellow-red Apedal B horizon**.
- These soils may be found on all types of parent material, but less commonly on basic rock. Commonly formed in sands, sandstones, quartzite's, shales and granite on account of lower ferrous iron reserve.
- The study area falls within the Klipspruitriviersberg Group as part of the Ventersdorp Supergroup Stratigraphy Unit. The Ventersdorp is characterised mainly of andesitic lava and tuff, quartz porphyry, conglomerate, sandstone and calcareous shale (Barnard, 2000).



## Findings of the Specialist studies :

- **Soils**

- **Geotechnical factors and Soil Type**

- The area is said to have active, expansive or swelling soils in this region.
- The amount of expansion in millimetres (expressed as total soil heave) that can be expected when the moisture in the soil changes.
- Moisture changes can be due to seasonal changes in rainfall, or changes in the level of ground water due to abstraction, drainage changes or river modification (Mudau, 2000).

- **Implication for development**

- The degree to which soil expands or contracts is a critical factor in the foundation design, especially of single-story residential buildings. Expansive clays, which can result in significant damage to buildings and pipelines, are probably one of the most widespread problem soils in South Africa.

- **Severity class**

According to the severity class from the geotechnical series map as shown below, the study area falls under **Act 4**, which has a moderate expansion. The

heave is expected to be between 5-30 mm.

Act 2- Active or expansive soil is present (amount of expected heave is unknown)

Act 3- Low expansion (heave is expected to be 0-5 mm)

Act 4- Moderate expansion (heave is expected to be 5-30 mm)

Act 5- High expansion (heave is expected to be greater than 30 mm)



## Findings of the Specialist studies :

- **Soils**

### PERMEABILITY OF SOIL

- is a measure of how easily fluids (usually water) pass through the soil
- is related to the degree to which the pores or spaces of the soil are connected to each other.
- It is geologically controlled by factors –
  - the shape of the mineral grains in the soil,
  - the grain size and the manner in which the grains are held together (Mudau, 2000).

### ***Implication for development***

- It is a critical factor that affects the rate at which water and dissolved contaminants can pass through, and into, the ground water. This information is critical to the siting of certain developments such as cemeteries and certain types of waste-disposal sites.

### ***Severity class***

According to the severity class from the geotechnical series map as shown area falls under Per 4, which has a high permeability.

below, the study

- Per 2- Low permeability ( $<4 \times 10^{-4}$  -  $9 \times 10^{-10}$  cm/s)
- Per 3- Medium permeability ( $4 \times 10^{-4}$  -  $4 \times 10^{-6}$  cm/s)
- Per 4- High permeability ( $4 \times 10^{-4}$  cm/s)



## Findings of the Specialist studies

### • Hydrological studies

- The study area falls within WMA 08 – Upper Vaal that lies predominantly in the eastern interior of the country.
- The major rivers: Wilge, Liebenbergsvlei and Vaal . **(is there a map showing these?)**
- The Klip Middle River (Klipspruit), is a perennial stream flowing south westerly then south of the Soweto township
- Most significant stream for the C22A Quaternary catchment area,
- Discharges to Klip Upper river which then flows into south easterly direction.
- The Klip River is the main river draining the portion of Johannesburg south of the Witwatersrand, and its basin includes the Johannesburg CBD and Soweto.
- The mouth of the river is at Vereeniging where it empties into the Vaal River.
- Activities which impacts negatively on surface water :
  - Storm water from urban runoff,
  - Sedimentation and siltation,
  - Domestic waste disposal along river systems,
  - Sewage and mining effluents.



## Findings of the Specialist studies

- **Hydrological studies**



Figure 7.2-1 Catchments and main rivers within each management unit

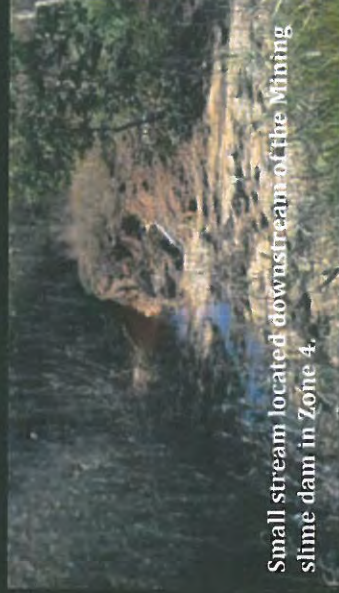




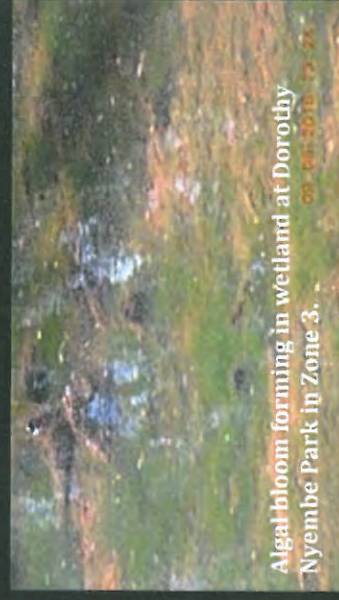
## Findings of the Specialist studies

- **Hydrological studies**

- ❑ water quality from the Klipspruit and its tributaries is of **poor quality** on average, not suitable for domestic use purposes.
- ❑ Indicator variables of pollutants from various sources where identified in the Laboratory analysis report.
- ❑ Activities **which impacts negatively** on surface water can be categorised as follows:
  - Illegal Domestic Waste Disposal;
  - Stormwater from urban areas and Sedimentation;
  - Industrial Activities like mining;



Small stream located downstream of the Mining slime dam in Zone 4.



Algal bloom forming in wetland at Dorothy Nyembe Park in Zone 3.



Round culverts blocked with litter in Thokoza Park in Zone 1.



Sedimentation within the wetland section in Klipspruit Valley Road to Chris Hani Road section of WMU in Zone 2.



## Findings of the Specialist studies

- **Wetland studies**
- The study area is mostly covered by grass, shrubs, tall trees, and weeds.
- The site falls under the grassland biome (Mucina & Rutherford, 2006) unit of Albany thicket, Soweto Highveld grassland.
- A total of 64 *species* were recorded during assessment of which 20 are declared as weeds or invader plants.
- The proportion of exotic and declared weeds or invader species is **high (31%)**, a reflection of **high levels of disturbance and habitat transformation in the study area.**



- It lies within both a **Critical Biodiversity Area** and an Ecological Support Area (Gauteng Conservation Plan (C-Plan) for 2014).
- Even though no red data species or threatened species were observed during the time of the assessment, due diligence and *care must be undertaken to identify species of importance that may occur in the area at any given time.*



- Three ecosystem types identified Critical (CR); Endangered (EN) and Vulnerable (VU).
- Due to the existence of these three ecosystem types, the study area is regarded as a **High Sensitive Area** in terms of Biodiversity levels especially due to its wetland river system



Figure 7.1.3 Ecosystem status within management area



## Findings of the Specialist studies

- **Biodiversity studies**
  - ❑ A diversity of **avifauna species (birds)** were identified during the site assessment along the Klipspruit river and the associated wetland areas.
  - ❑ A few species of invertebrates specifically butterflies were observed on the site.
  - ❑ No red data species or species of conservation value were observed.



*Ardea herodias* (Blue heron)



*Passer melanurus* (Cape sparrow)

# Findings of the Specialist studies

- **Heritage studies**



Eight (8) focal areas assessed throughout the study area across all four zones. (we need to have this as a focus slide to say what will basically be done on site



## Findings of the Specialist studies

- **Heritage studies**

- Potential rehabilitation impacts include:

- Mulching;
- Erosion control fences;
- Stone gabions and river mattresses;
- Sediment control;
- Treating footpaths; and
- Invasive alien species control.

- Impact of the proposed development is projected as **low**.

- **Recommended mitigation measures:**

- ✓ Archaeologist to check initial site clearance with construction crew for possible heritage resources.
- ✓ Stop construction if any heritage resources - such as graves, human remains or fossils are identified; and
- ✓ Where any significant resources are found the archaeologist must assess and make the appropriate mitigation requirements.



## Proposed Developments:

### WHAT WILL BE DONE?

- Renovation of existing Parks (Thokoza, Orlando West, Dorothy Nyembe)
- Development of new parks – proposed park in Jabulani
- Wetland rehabilitation:
  - ✓ Mulching
  - ✓ Install soil erosion control structures
  - ✓ Install storm water and management structures
  - ✓ Address livestock overgrazing (rotational grazing)
  - ✓ Address illegal dumping of household waste and building rubble



## Proposed Developments:

### WHAT WILL BE DONE?

- Wetland rehabilitation conti.... :
  - ✓ Stone Gabions construction and installation - (gabion baskets, box gabions and gabion mattresses)
  - ✓ Installation of River mattress
  - ✓ Sediment control using silt fence
  - ✓ Sediment control using gravel bags
  - ✓ Treating footpaths using organic mulch
  - ✓ Invasive alien species control
  - ✓ Bank stabilisation using Soil bioengineering techniques:  
(establishing a dense cover of soil protecting plants)





## Proposed Developments:

### **WHAT WILL BE DONE?**

- Wetland rehabilitation conti... :
  - ✓ Address illegal dumping through river clean ups:  
(clearing of debris in water, clearing of blocked culverts and more)
  - ✓ Address unsustainable reed harvesting
  - ✓ Soil and ground movement during rehabilitation activities in stream areas.
  - ✓ Clearing of silt on the river banks and inlet to wetland
  - ✓ Installation of fencing and gates for access control
  - ✓ Storm Water and Flood Management
  - ✓ Construction of Berms Storm water Structures
  - ✓ Address deterioration of water quality



## Proposed Developments:

### WHAT ARE THE BENEFITS OF THE PROJECT? - COMMUNITY

- **Job creation opportunities:**
  - ✓ Local workers required for wetland rehabilitation & park development.
- **Capacity building:**
  - ✓ Local training companies to be engaged to provide training for the local workers – safety, environmental, wetland rehab, park development
  - ✓ Skills development & empowerment of local community
  - ✓ Environmental Awareness, Protection and Management
- **Improved community recreational lifestyle:**
  - ✓ Recreational activities through the development of **New** parks (Jabulani); Fleurhof Dam - restaurant, jetty and walkways
  - ✓ Renovation of **Existing** ones such as Orlando West Park, Thokoza Park



## Proposed Developments:

### **WHAT WILL WETLAND REHABILITATION DO? – WETLAND HEALTH**

- ✓ improved water quality;
- ✓ free flowing drainage systems;
- ✓ reduced soil erosion of river banks and sedimentation of the river beds;
- ✓ improved waste collection and management systems
- ✓ improved community environmental health awareness and social recreational environment in the area.

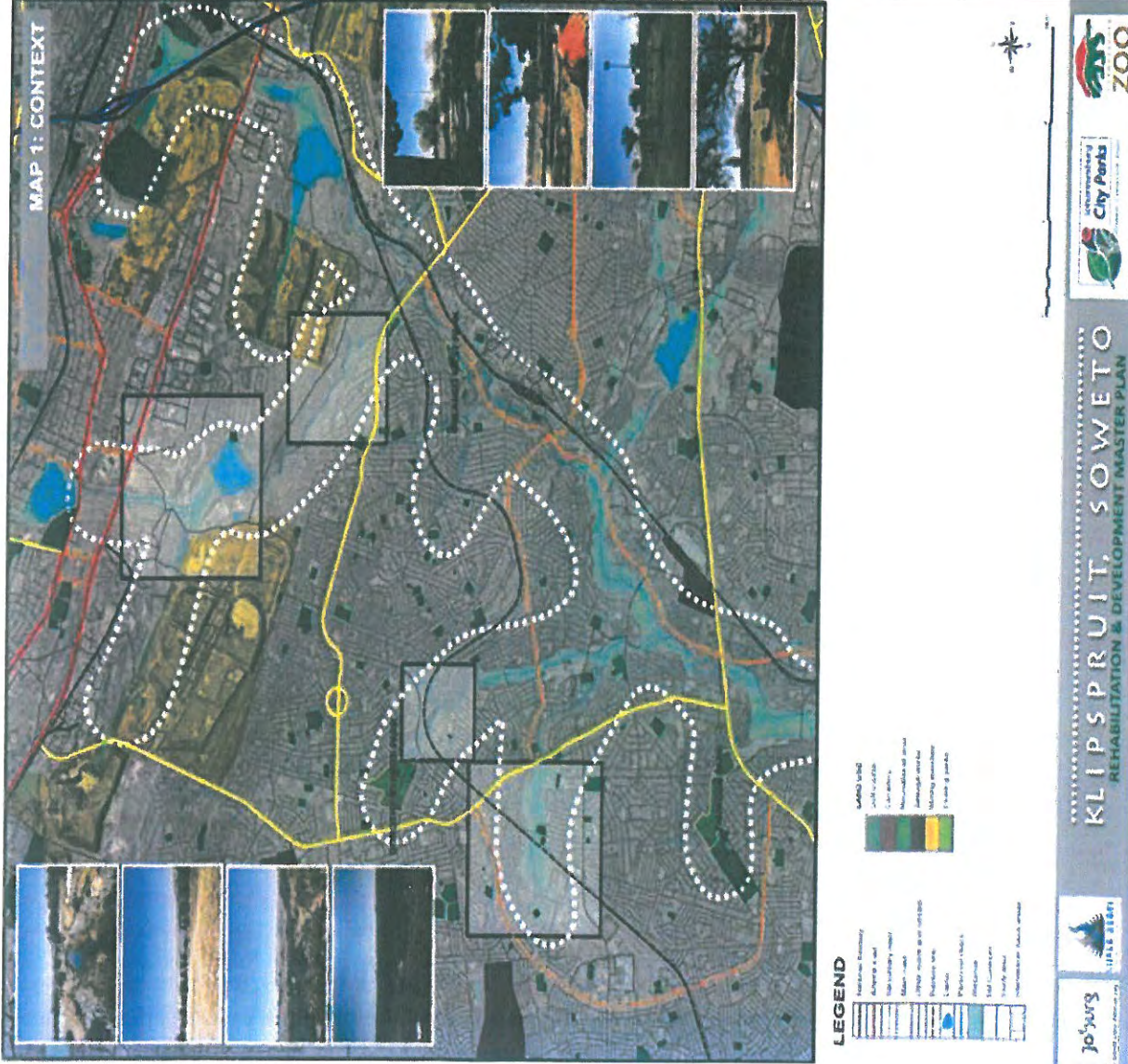


# MASTER PLAN

## Proposed Developments:

### PROJECT CONTEXT

Identification of land use  
within the study area





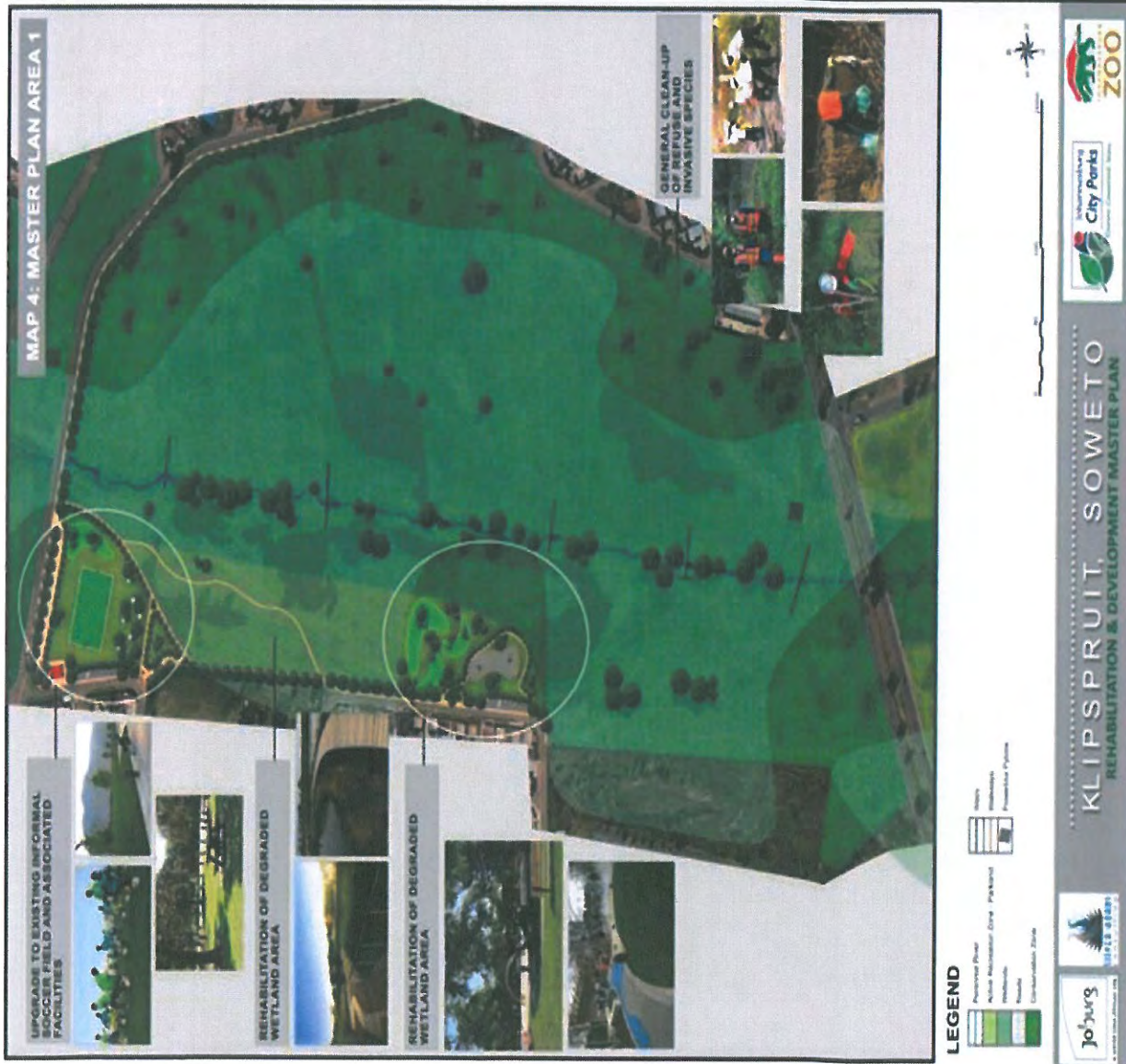


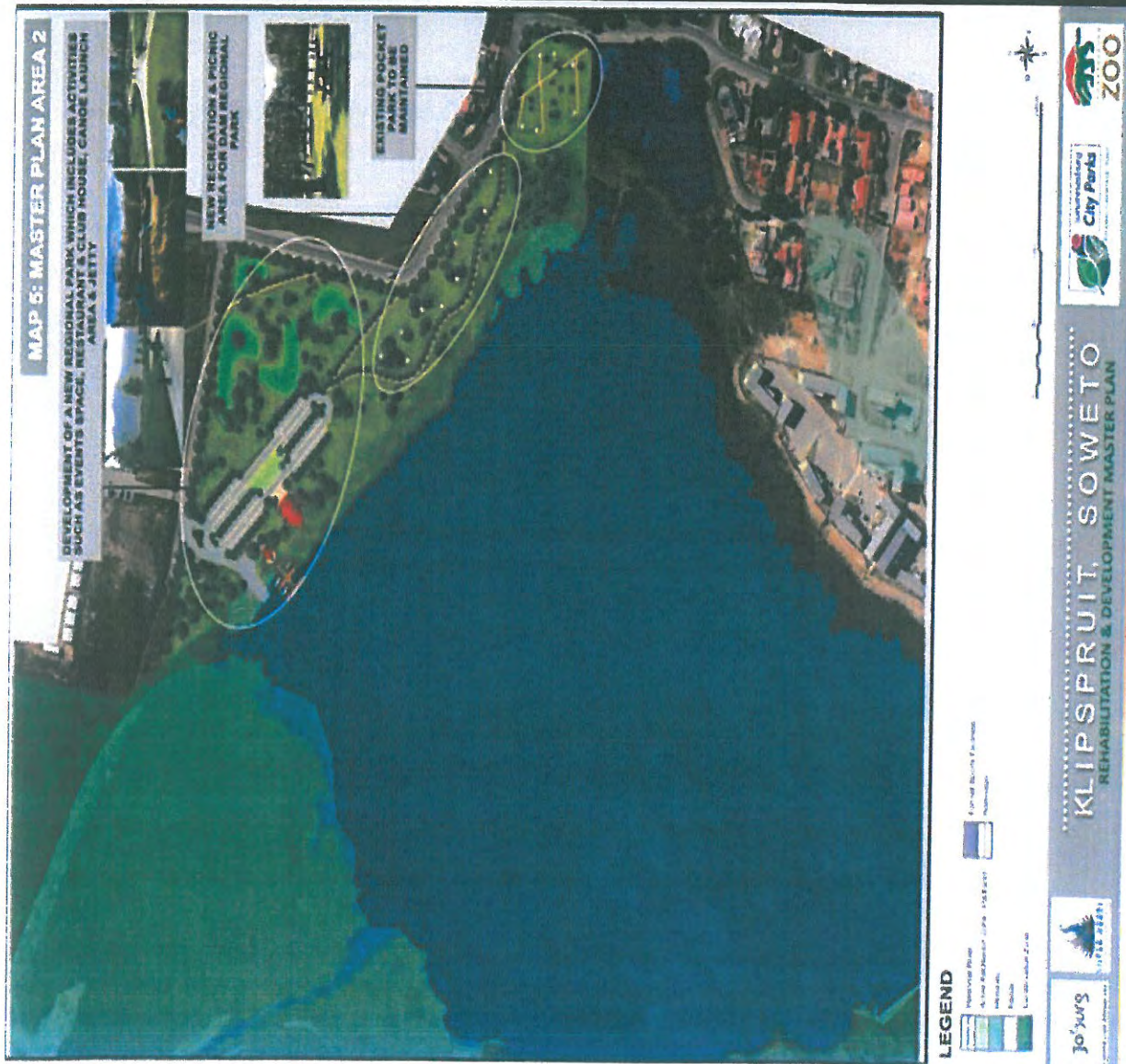
# MASTER PLAN

## Proposed Developments

### MASTER PLAN AREA 1:

- ✓ Rehabilitation of wetland area by development of parks and recreational areas:  
Picnic site, walkways, sports area, sitting area
- ✓ General clean up of refuse & removal of Invasive plant species





# MASTERPLAN

## Proposed Developments

### MASTERPLAN AREA 2:

- ✓ Development of a new regional park which will include activities such as:
  - Event space
  - Restaurant
  - Club house,
  - Canoe launch area
  - Jetty





**MYEZO ENVIRONMENTAL  
MANAGEMENT SERVICES [Pty] Ltd**  
*Environmental Stewardship*

# MASTERPLAN

## Proposed Developments





**MYEZO ENVIRONMENTAL  
MANAGEMENT SERVICES [Pty] Ltd**  
*Environmental Stewardship*

## MASTERPLAN

### Proposed Developments





**MYEZO ENVIRONMENTAL  
MANAGEMENT SERVICES [Pty] Ltd**  
*Environmental Stewardship*

# MASTERPLAN

## Proposed Developments





**MYEZO ENVIRONMENTAL  
MANAGEMENT SERVICES [Pty] Ltd**  
*Environmental Stewardship*

## Example of Proposed Developments in Affected Areas

- Clearing of vegetation for construction site and for park development





## **What will be the impact of these rehabilitation or master plan interventions? –**

### **ENVIRONMENTAL**

The wetland rehabilitation interventions and the Proposed development present short-term negative environmental impacts.

However, they **do not outway** the **positive benefits** of the proposed interventions.

The identified negative impacts are considered manageable provided the recommended mitigation measures will be implemented and monitored as prescribed in the EMPr.



## **What will be the impact of these rehabilitation or master plan interventions? –**

### **ENVIRONMENTAL**

Wetland health improved through:

- ✓ removal of alien invasive plant species;
- ✓ clearing of waste and litter in the culverts;
- ✓ removal of silt in the culverts;
- ✓ installation of soil erosion gabion structures to improve river banks;
- ✓ placement of gravel bags will help with reduction in sedimentation;
- ✓ preventing trampling by grazing livestock
- ✓ Control harvesting rate of reeds to promote increase in indigenous vegetation regrowth
- ✓ re-vegetation of damaged and bare areas to re-establish the indigenous plant and animal species within the wetland.

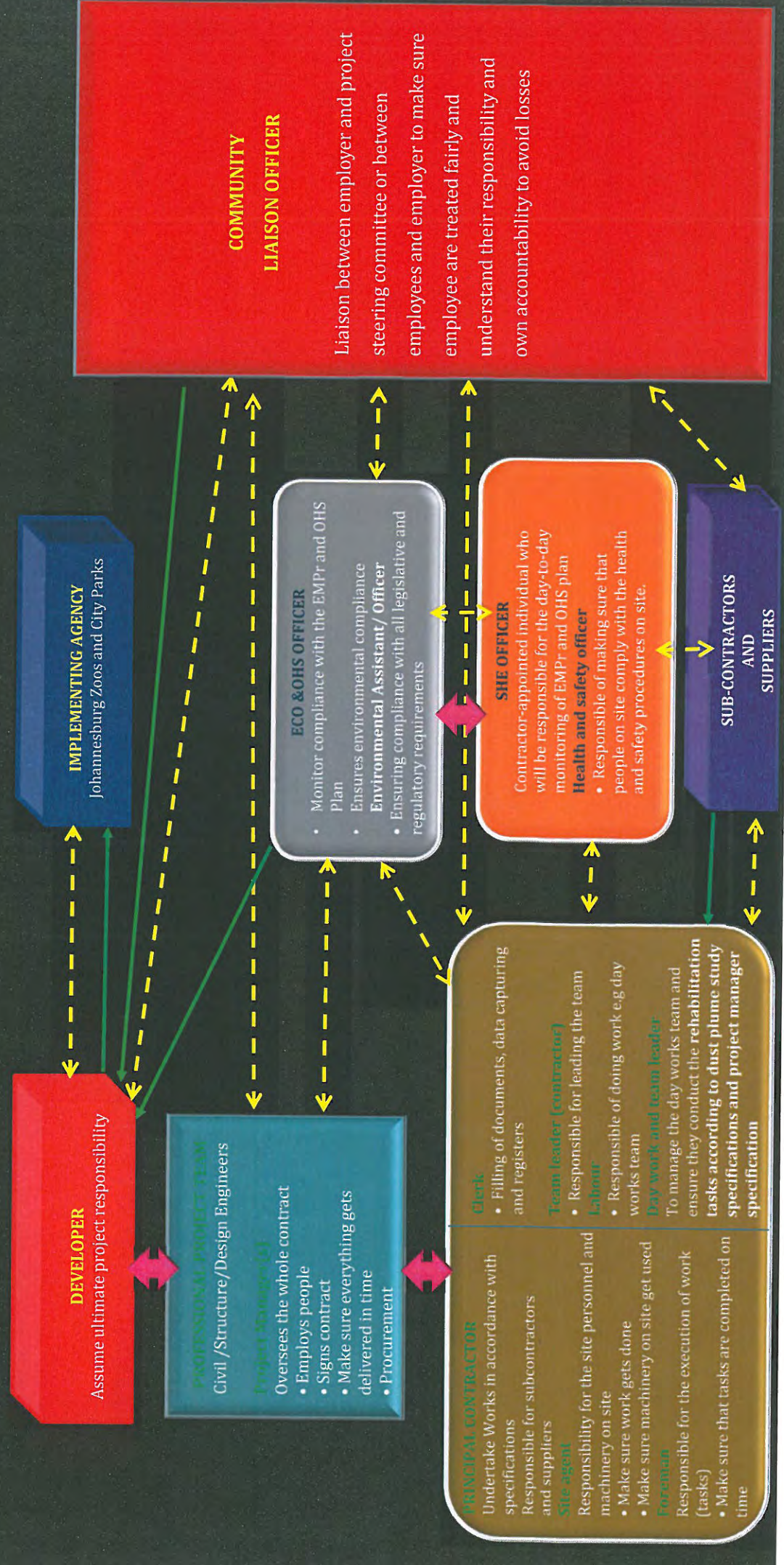
### **SOCIO-ECONOMIC**

- ✓ Employment – local jobs
- ✓ Skills Development – training
- ✓ Empowerment – Environmental Awareness

**KEY:**

- Reporting (Green arrow)
- Communication (Yellow dashed arrow)

**PROJECT ORGANISATIONAL STRUCTURE**



**IMPLEMENTING AGENCY**  
Johannesburg Zoos and City Parks

**DEVELOPER**  
Assume ultimate project responsibility

**PROFESSIONAL PROJECT TEAM**  
Civil /Structure/Design Engineers  
**Project Manager(s)**  
Oversees the whole contract  
• Employs people  
• Signs contract  
• Make sure everything gets delivered in time  
• Procurement

**ECO & OHS OFFICER**  
Monitor compliance with the EMPr and OHS Plan  
• Ensures environmental compliance  
**Environmental Assistant/ Officer**  
• Ensuring compliance with all legislative and regulatory requirements

**PRINCIPAL CONTRACTOR**  
Undertake Works in accordance with specifications  
Responsible for subcontractors and suppliers  
**Site agent**  
Responsibility for the site personnel and machinery on site  
• Make sure work gets done  
• Make sure machinery on site get used  
**Foreman**  
Responsible for the execution of work (tasks)  
• Make sure that tasks are completed on time

**Clerk**  
• Filling of documents, data capturing and registers  
**Team leader (contractor)**  
• Responsible for leading the team  
**Labour**  
• Responsible of doing work eg day works team  
**Day work and team leader**  
To manage the day works team and ensure they conduct the **rehabilitation tasks according to dust plume study specifications and project manager specification**

**SHE OFFICER**  
Contractor-appointed individual who will be responsible for the day-to-day monitoring of EMPr and OHS plan  
**Health and safety officer**  
• Responsible of making sure that people on site comply with the health and safety procedures on site.

**SUB-CONTRACTORS AND SUPPLIERS**

**COMMUNITY LIAISON OFFICER**  
Liaison between employer and project steering committee or between employees and employer to make sure employee are treated fairly and understand their responsibility and own accountability to avoid losses

# PUBLIC INVOLVEMENT STRATEGY



Activity / Tasks (What was done)	Execution process (How)	Deliverables
<p>1. Stakeholder profiling, data collection and identification of relevant stakeholders and Interested and Affected parties (IAPs).</p>	<p>The key stakeholders were notified about the Environmental Studies /Environmental Impact Assessment conducted. The following approach was employed:</p> <ul style="list-style-type: none"> <li>➤ Understanding of scope of work from the applicant;</li> <li>➤ Identification of project locality and neighbouring activities and;</li> <li>➤ Understanding of the site;</li> <li>➤ Literature review of existing documents and reports including the Municipal Integrated Development Plan (IDP), Environmental Framework Plans, Gauteng Growth Development Strategy, Local Economic Development Plans, Municipal by-laws, and Provincial ordinances;</li> <li>➤ Literature review of specialists /experts reports that have contributed to the understanding of this water management unit</li> </ul>	<p>Interested and Affected Parties Register (IAPR) Project locality maps</p>
<p>1.1 Data verification</p>	<ul style="list-style-type: none"> <li>• Validation of collated information was done through literature review of existing documents and reports such as the Municipal IDP</li> </ul>	<ul style="list-style-type: none"> <li>• Updated IAP Register</li> </ul>



# PUBLIC INVOLVEMENT STRATEGY



Activity / Tasks (What was done)	Execution process (How)	Deliverables
<p>2. Notification of stakeholders and IAPs.</p> <p>2.1. Compilation of Background Information Document (BID).</p> <p>2.2. Adverts and site notices, notification letter.</p> <p>2.3. Distribution of BID and notifying stakeholders about adverts output date and sourcing and organising meetings.</p>	<ul style="list-style-type: none"> <li>• Confirmation of the local newspaper</li> <li>➢ Engaged the ward councillors and the JCPZ community liaison Department and the identified newspapers were Meadowlands News, Orlando News, Jabulani News, which are published by Caxton media.</li> <li>➢ Confirmed with The City of Johannesburg Metropolitan Municipality;</li> <li>• Re-checked with newspaper for their geographic distribution boundaries;</li> <li>• Sent adverts to newspaper Sent information sharing documents to key stakeholders</li> </ul> <p>The strategy for stakeholder engagement was conducted as follows:</p> <ul style="list-style-type: none"> <li>• Pre-consultation meetings were held with key stakeholders such as Department of Water and Sanitation, on 08 April 2016, with the projects Hydrological specialist.</li> <li>• Project planning meetings were held with Johannesburg City Parks and Zoo and City of Johannesburg (CoJ) during monthly progress meetings before submission of the application form;</li> <li>• Public meetings were held with stakeholders and IAPs; on 14 September 2016.</li> </ul>	<ul style="list-style-type: none"> <li>• BID</li> <li>• Copy of advert, on site notice</li> <li>• Update of IAP Register.</li> </ul>
<p>3. Stakeholder engagement</p> <p>The information collected during stakeholder profiling was used to determine the best engagement strategies. The literacy levels and circumstances that could hinder effective participation was noted during these stages.</p>	<ul style="list-style-type: none"> <li>• Notification letters and emails.</li> <li>• Submitted written issues and concerns.</li> <li>• Presentations held during meetings.</li> <li>• Agendas of meetings.</li> </ul>	

# PUBLIC INVOLVEMENT STRATEGY



**MYEZO ENVIRONMENTAL  
MANAGEMENT SERVICES [Pty] Ltd**  
*Environmental Stewardship*

Activity / Tasks (What was done)	Execution process (How)	Deliverables
<p>3. Stakeholder engagement (cont...)</p> <p>Telephonic engagements to solicit data also done in Zulu/Tswana and Afrikaans when necessary by the dedicated facilitator.</p>	<p>The meeting organisation entailed telephonic communication to organise meetings, sending emails to confirm the dates and confirmation of meetings and circulation of proposed agenda. Planning meetings were held between the project team, JCPZ and CoJ to coordinate the meetings.</p> <p>The identified ward councillors were preliminary notified about the project via meetings held with the JCPZ liaison department and the CoJ CRUM at the CRUM offices on 31 August 2016. This was followed up with telephonic contact and subsequent emails. The ward councillors and were engaged as well during the distribution of the Basic Assessment Report:</p> <p>Although initial engagement with councillors and the community were strained, due to the local government election that where held on 03 August 2016 during the projects time frame, there were no mobility aspects that could hinder stakeholders from participating. The use local languages to translate the site notices, and ongoing consultation with stakeholder worked effectively in this region Documents was also posted to stakeholder's addresses.</p>	<ul style="list-style-type: none"> <li>• Notification letters and emails.</li> <li>• Submitted written issues and concerns.</li> <li>• Presentations held during meetings.</li> <li>• Agendas of meetings.</li> </ul>
<p><b>Access to information</b></p> <p>Libraries were identified as places where the documents for public review could be placed. Documents were placed at the Johannesburg City Parks and Zoos offices, CoJ offices and Mfolo, Dobsonville, Meadowlands, Orlando, and Jabulani libraries. An internet link was created in the CoJ website where reports were made accessible.</p>		

# PUBLIC INVOLVEMENT STRATEGY



<b>Activity / Tasks (What was done)</b>	<b>Execution process (How)</b>	<b>Deliverables</b>
<p>4. Collation and consolidating of issues and determining subsequent specialist investigations that would be required.</p>	<ul style="list-style-type: none"><li>• Issues raised were collated;</li><li>• Terms of reference for specialist studies were developed;</li></ul> <p>The specialist studies were undertaken to assess the environment likely to be affected by the proposed project.</p> <p>Impacts were identified through these specialist investigations including use of modelling of collected data, and professional expertise.</p> <p>The identified impacts, were assessed for significance, using the criteria provided in the Basic Assessment Report.</p> <p>The first stage of impact assessment was the identification of environmental activities, aspects and impacts. This was supported by the identification of receptors and resources, which allowed for an understanding of the impact pathway and an assessment of the sensitivity to change.</p> <p>The significance of the impact was assessed by rating each variable numerically according to defined criteria. The purpose of the rating was to develop a clear understanding of influences and processes associated with each impact.</p>	<p>Terms of References, Issues and Response Report and Specialist Reports.</p>

# PUBLIC PARTICIPATION PROCESS – PART 2



**MYEZO ENVIRONMENTAL  
MANAGEMENT SERVICES [Pty] Ltd**  
*Environmental Stewardship*

PHASE	STATUS
<p>➤ Public Participation Process (PPP)</p> <ol style="list-style-type: none"> <li>1. Confirm the key stakeholders to include in the process. The stakeholders such as Joburg City Parks and Zoo, Joburg Water JW), Joburg Roads Agency (JRA), businesses and the communities within the WMUs.</li> <li>2. Compilation and maintenance of the stakeholder database for the duration of the project as well as the background information document</li> <li>3. Introduce the project to the stakeholders, once options and the proposed best practical environmental option (BPOE) have been identified engaged with stakeholders to obtain their inputs in the proposed rehabilitation measures. In this process, we will also find ways of involving the stakeholders in such a way that there is economic empowerment of the local communities.</li> <li>4. Communicate with the stakeholders at all key applicable project stages</li> <li>5. Take into consideration all inputs and comments made during engagement sessions for input into the reports to be generated</li> <li>6. Hold public meetings in the vicinity of the affected areas (WMU) as necessary.</li> </ol>	<p>The process has commenced.</p>
<p>➤ Document and record all comments received and responses thereto in a separate Comment and Response Report</p>	<p>Planned.</p>
<p>➤ Compile a Public Participation Report</p>	<p>Planned.</p>
<p>➤ Submission of Environmental Authorisation Applications to the Gauteng Department of Agriculture and Rural Development (GDARD) for the implementation of rehabilitation measures in accordance with NEMA and EIA Regulations; as necessary</p>	<p>Planned.</p>
<p>➤ Manage the project and carry out all these activities taking into consideration the inputs of the different stakeholders</p>	<p>Planned.</p>

# PUBLIC PARTICIPATION PROCESS – PART 2



**MYEZO ENVIRONMENTAL  
MANAGEMENT SERVICES [Pty] Ltd**  
*Environmental Stewardship*

## WAY FORWARD

Stage	Time Frames	Status
Public Participation Process Part 2	26/07/16-	Ongoing. The engagement meeting with Ward Councillors was postponed to second week of September 2016 due to induction and hand over of new Councillors. Advert and notice have been drafted, local newspapers, have been identified and the publishing process is will commence after the meeting. The proposed community meeting is planned for 11 -16/09/16
Compilation and submission of applications	01/08/16- Ongoing.	The draft BAR, has been completed and is ready for comments during the public participation process. The EMP is in the review stages. The anticipated submission date is 20/10/16.



**MYEZO ENVIRONMENTAL  
MANAGEMENT SERVICES [Pty] Ltd**  
*Environmental Stewardship*

# Closure



NOTIFICATION TO INTERESTED AND AFFECTED PARTIES ABOUT THE AVAILABILITY OF BASIC ASSESSMENT REPORT, AS WELL AS THE ENVIRONMENTAL MANAGEMENT PROGRAMME REPORT WHICH WERE PREPARED IN SUPPORT OF CITY PARKS AND ZOO'S APPLICATION FOR AN ENVIRONMENTAL AUTHORISATION IN RESPECT OF REHABILITATION OF THE KLIP MIDDLE SOWETO WATER MANAGEMENT UNIT IN JOHANNESBURG, WITHIN THE CITY OF JOHANNESBURG MUNICIPALITY

Interested and Affected Parties' attention is drawn to the fact that, the projects will be undertaken in different areas within the Water Management Unit (WMU) and as such, must look at the accompanying map delineating the zones of interventions.

Date: September 16, 2016

Document Name: LSES-PI-BAR-Notification Advert to I&APs

Date: September 16, 2016

Myezo Ref: LS ES , LR ES 2015/ 10/

GDARD Ref No: 002/16- 17/ E0097w

Applicant: City of Johannesburg Municipality (CoJ)

**Project locality:** The project will be undertaken in various communities of Soweto, which border along the Klip- Middle Soweto WMU. This WMU is roughly bounded by Koma Road on the south-west, Elias Motswaledi on the west, Main Reef Road on the north and Klip Valley Road on the south-east. Some of the key suburbs within this WMU, are the Soweto suburbs of Dobsonville, Meadowlands, Molapo, Jabavu, Jabulani, Zondi, Orlando West and Mofolo. (See Figure 1)

**Application area co-ordinates:** Taken at center of each zone, as follows; (Zone 1) (Zone 2) (Zone 3) (Zone 4):  
E 26° 15' 15.30"S, 27° 52' 14."E; 26° 14' 44.83"S, 27° 83' 39.53"E; 26° 13' 41.31,20"S, 27° 53'41.171"E 26° 12' 71,75"S, 27° 54'00.33"

**Nature of Application:** The proposed Environmental Rehabilitation of the Klip Middle Soweto WMU for the CoJ

This project will address some of the pressing issues, as part of its support to the Growth Development Strategy (GDS) goals, which advocate for management of water catchments and sources, namely, water conservation and preservation of the ecological reserve and the goal of reduced water pollution. WMUs play a role in the management of storm water as they act as receiver of storm water diverted through the storm water drains from the city streets to the water units. The wetlands within the WMU serves as a natural filtration system.

The studies will furthermore, highlight the status of the environment in the communities bordering along the Klip Middle Soweto WMU. Crucial data will be collected through specialist studies that will be conducted in the study areas as part of the Basic Environmental Assessment process.

#### Process followed:

Environmental Impact Assessment process within the WMU as indicated under the project locality above and situated within the COJ.

Notice is hereby given in terms of the National Environmental Management Act, Act 107 of 1998 (NEMA): Environmental Impact Assessment (EIA) Regulations, 2014 R982 (2014 EIA Regulations), Section 41 (2) (a) (b) (c) (d) (e) and (3) published in Government Notices No. R982, under Sections 24 (5) and 44 of NEMA, of CoJ's intention to rehabilitate the Klip Middle Soweto Water Management Unit (WMU).

Lebone Engineering Pty Ltd (Lebone) in association with Myezo Environmental Management Services Pty Ltd (Myezo), has thus been appointed by Johannesburg Parks and Zoo's (JCPZ) on behalf of CoJ to undertake the Environmental Impact Assessment (EIA) for the activities that would require environmental authorisation. As such, notice is hereby given in terms of Section 41 (2) (a) (b) (c) (d) (e) and (3) of the 2014 EIA Regulations, that an application for environmental authorisation has been submitted to the Gauteng Department of Agriculture (GDARD), in terms of NEMA and NEM: WA in respect of listed activities that have been triggered by proposed rehabilitation interventions in the Klip Middle Soweto Water Management Unit. In addition, please note that the application for water related activities will have to be submitted to the Department of Water and Sanitation (D.S). The application for these activities will be made in terms of National Water Act, 1998 (Act No.36 of 1998), Section 21(c). Section 21(l), as part of separate appointments and process.

The activities to be undertaken under this application include: R983 (Listing Notice 3) 04 December 2014 Activity No.4, No 12, No 14(l) (ii) (iii) (v) (vi) (viii) (x) (xii) (a) (b) vi. (x) No.15 (a) l. No.18. (c) vii. xii.

Therefore, Basic Assessment Report (BAR) procedures are being applied to this application. Please be advised that this notice serves to invite interested and affected parties (I&APs) to participate in the EIA process. To ensure that you are registered as an I&AP or to lodge any concern, formally object or seek clarity on the proposed project and request project related documentation, kindly contact Myezo on 082 7722 418 or (012) 998 7642.

Copies of the BAR and Environmental Management Report (EMPR) will be made available at City Parks House, 40 De Korte Street Johannesburg Jabulani Civic centre, Jabavu Library, Dobson Ville Library, Meadowlands Library, Mofolo Library, or alternatively contact Myezo Environmental Management Services (Pty) Ltd on the details provided below. All issues and concerns can be lodged formally (in writing) by either email or fax at the details shown below. All comments on the BAR and EMPR, should be submitted within 30 days of this advert to the EAP by Monday 17th October 2016.

**Alternative contacts:** Environmental Assessment Practitioner (EAP)

Myezo Environmental Management Services (Pty) LTD

Contact person: Ms Babalwa Fatyi Tel: (012) 998 7642 Fax: 086 543 1698 Cell: 082 7722 418

E-mail: babalwa@myezo.co.za

Address: Postnet Suite B165, Private Bag X 18, Lynwood Ridge, 0040, Pretoria, South Africa

UBUNJINIYELA BELEBONE - EKLIPI NASE-SOWETO EPHAKATHI UKUHLOLWA KWEZEMVELO EMAPHAGI EDOLOBHA NASE-ZOO. ISAZISO ESIYA KWABANESIFISO NABATHINTEKAYO ESIPHATHELENE NOMBIKO WOKUHLOLWA KOKUTHINTEKA KWEZEMVELO OKUYISISEKELO KANYE NOHLELO LOKUNAKEKELWA KWEMVELO OLUHLOSELWE UKUSEKELA UCWANINGO NGAMAPAKI EDOLOBHA NEZEMVELO ZASEMA-ZOO, OLUZOKWENZIWA OPHIKWENI LOKUNAKEKELWA KWAMANZI LWASE-KLIP NASESOWETO EPHAKATHI, EGOLI, KUMASIPALA WASEDOLOBHENTI LASE-JOHANNESBURG

Izinhlango ezinesifiso Nezithintekayo zaziswa ngokuthi kunemisebenzi ezokwenziwa ezindaweni ezihlukahlukene ngaphansi koPhiko Lokuphathwa Kwamanzi (WMU) futhi ngenxa yalokho, kufanele zibheke ibalazwe elihambisana ngalesi saziso elibonisa izindawo okuzosetshenzwa kuzo.

Usuku: September 16, 2016

Igama Laledokhumententi: Isaziso Esiyisikhangiso se- LSES-PI-BAR- esiya kuma-IAP

Usuku: September 16, 2016

Myezo Ref: LSES, LRES 2015/10/AV

GDARD Ref No: 002/16-17/E0 097w

Umfaki sicelo: Umasipala waseDolobheni LaseGoli (CoJ)

**Indawo yomsebenzi:** Umsebenzi uzokwenziwa emiphakathini eminingi yaseSoweto, esendaweni yaseKlip-Middle Soweto WMU. Le WMU izungezwe umgwaqo iKoma Road eningizimu-ntshonalanga, u-Elias Motswaledi entshonalanga, uMain Reef Road enyakatho kanye neKlip Valley Road eningizimu-mpumalanga. Amanye amalokishi athinteka kakhulu kule WMU, amalokishi aseSoweto iDobsonville, iMeadowlands, iMolapo, iJabavu, iJabulani, iZondi, i-Orlando West neMofolo. (Bheka Isithombe 1)

**Izindawo ezithintekayo:** Zithwetshulwe maphakathi ne-zone ngayinye, ngokwalokhu okulandelayo: (Zone 1) (Zone 2) (Zone 3) (Zone 4):  
E 26° 15' 15.30"S, 27° 52' 14."E; 26° 14' 44.83"S, 27° 83' 39.53"E; 26° 13' 41.31,20"S, 27° 53'41.171"E 26° 12' 71,75"S, 27° 54'00.33"

**Uhlobo lwesicelo:** Ukuvuselelwa Kwemvelo okuhlongozwayo kwe-Klip Middle Soweto iWMU ye-CoJ.

Lo msebenzi uzosingatha ezinye zezinkinga ezikhathazayo, okungenye yezindlela osekela ngazo imigomo ye-Growth Development Strategy (GDS), efuna ukuba kulawulwe ukuqoqwa kwamanzi nemiithombo yamanzi, okuwukuthi ukulondolozwa kwamanzi nokulondolozwa kwesimiso semvelo nomgomo wokunciphisa izinga lokungcoliswa kwamanzi. Ama-WMU adlala indima ebalulekile ekulawulweni kwamanzi emvula njengoba njengoba kuyiwona amukela amanzi emvula achezukisiwe kusetshenziswa amapayipi enzelwe amanzi emvula asuka emigwaqweni esedolobheni aye ezindaweni zokugcina amanzi. Amaxhaphozi atholakala kuyi-WMU asebenza njengesimiso semvelo sokuhlaza amanzi.

Ngaphezu kwalokho lolu cwaningo, luzophawula ngesimo sezemvelo emiphakathini egudle i-Klip Middle Soweto WMU. Kuzoqoqwa ukwaziswa okubalulekile ngalolu cwaningo olukhethekile oluzokwenziwa ezindaweni okucwaningwa kuzo futhi lokhu kuyingxenye yenqubo yokuhlola Okuyisisekelo Kwezemvelo (Basic Environmental Assessment).

**Inqubo elandelwayo:** Inqubo Yokuhlola Eyisisekelo

Inqubo Yokuhlola Kwendlela Imvelo ethinteka ngayo ngaphansi kweWMU njengoba kuboniswe ngaphansi komsebenzi owenziwa ezindaweni ezichazwe ngenhla nezitholakala kuyi-COJ.

Lesi saziso sikhishwe ngokuvumelana noMthetho Kazwelonke Wezokunakekelwa Kwemvelo, u-Act 107 of 1998 (NEMA): Imithetho Yokuhlola Indlela Ezemvelo Ezithinteka ngayo (EIA), 2014 R982 (2014 EIA Regulations), Isigaba 41 (2) (a) (b) (c) (d) (e) futhi (3) oshicilelwe eZazisweni Zikahulumeni (Government Notices No. R982), ngaphansi kweSigaba 24 (5) kanye no-44 we-NEMA, wezinhlalo ze-CoJ zokuvuselela uPhiko Lokunakekelwa Kwamanzi (WMU) eKlip NaseSoweto Ephakathi.

ILebone Engineering Pty Ltd (Lebone) ibambisene noMyezo Environmental Management Services Pty Ltd (Myezo), baqokwe yiJohannesburg Parks and Zoo's (JCPZ) bemelela i-CoJ ukuze benze ukuhlola indlela imvelo ethinteka ngayo [Environmental Impact Assessment (EIA)] ngemisebenzi eyenziwayo edinga ukugunyazwa umnyango wezemvelo. Ngenxa yalokho, lesi saziso sikhishwa ngokuvumelana neSigaba 41 (2) (a) (b) (c) (d) (e) kanye no-(3) weziQondiso ze-2014 EIA, zokuthi isicelo sokugunyazwa ngokwezemvelo sifakiwe eMnyangweni Wezofimo WaseGauteng (GDARD), ngokuvumelana ne-NEMA kanye ne-NEM: WA ngokuqondene nemisebenzi enikezwe ohlwini ebangelwe ukuvuselelwa kwemvelo okuhlongozwayo uPhiko Lokunakekelwa Kwamanzi e-Klip NaseSoweto Ephakathi. Ngaphezu kwalokho, sicela uphawule ukuthi isicelo sokwenza imisebenzi ethinteka ezamanzi kufanele sithunyelwe eMnyangweni Wezamanzi Nokukhuculula (D.S). Ukufakwa kwesicelo sale misebenzi ezokwenziwa ngokuvumelana noMthetho Kazwelonke Wezamanzi ka-1998 (Act No.36 ka-1998), iSigaba 21(c). iSigaba 21(l), njengengxenye yenqubo nokumiswa okuseceleni.

Imisebenzi ezokwenziwa ngaphansi kwalesi sicelo ihlanganisa le: R983 (Uhlu Esazisweni 3) umsebenzi ka- 04 December 2014 No.4, No 12, No 14(l) (ii) (iii) (v) (vi) (viii) (x) (xii) (a) (b) vi. (x) No.15 (a) l. No.18. (c) vii. xii. Ngakho ke, kulesi sicelo kusebenza izinqubo zoMbiwo Wokuhlola Okuyisisekelo (Basic Assessment Report [BAR]).

Sicela ukunazisa ukuthi lesi saziso sihlolwe ukumema labo abanesifiso sokufaka izicelo nabanye abathintekayo (I&APs) ukuba babambe iqhaza engubweni ye-EIA. Ukuze uqiniseke ukuthi ubhaliswe njenge-I&AP noma ukuze ufake isikhalo nganoma yini ekukhathazayo, umelane ngokusemthethweni noma ufanele ukucaciselwa okuthile ngomsebenzi ohlongozwayo nokuba ucele amaphepha ahlobene nalo msebenzi, sicela ngomusa uthintane no-Myezo kule nombolo-082 7722 418 noma ku-(012) 998 7642.

Amakhophi eBAR kanye nawoMbiwo Wokunakekelwa Kwemvelo (EMPR) azohlakala e-City Parks House, 40 De Korte Street Johannesburg, eJabulani Civic centre, eJabavu Library, eDobson Ville Library, eMeadowlands Library, eMofolo Library, noma ungathintana noMyezo Environmental Management Services (Pty) Ltd emininigwaneni yokudhumana enikezwe ngezansi. Zone zinkinga nokukhathazeka kungathunyelwa ngokusemthethweni (ngokubhala incwadi) besethunyelwa ngekhele lemeyili noma ngesikhahlemezi kule mininingwane eboniswe ngezansi. Konke ukuphawula ngeBAR noma izindaba okufanele zihlanganiswe esigabeni se-EIA esidlule kufanele kuthunyelwe zingakadluli izinsuku ezingu-30 zokukhishwa kwalesi saziso zithunyelwe ku-EAP engakadluli uMsimbuluko ka-17 October 2016.

**Abanye okungaxhunyanwa nabo:** Yi-Environmental Assessment Practitioner (EAP) okungabaphaliswa bezokuhlola kwezemvelo.

Myezo Environmental Management Services (Pty) LTD

Umuntu Ongathintwa: Unkosazane (Ms.) Babalwa Fatyi Tel: (012) 998 7642 Fax: 086 543 1698 Cell: 082 7722 418

E-mail: babalwa@myezo.co.za Address: Postnet Suite B165, Private Bag X 18, Lynwood Ridge, 0040, Pretoria, South Africa



# MYEZO ENVIRONMENTAL MANAGEMENT SERVICES

*Environmental Stewardship*

T: 012 998 7642, F: 012 998 7641, C: 082 772 2418  
babalwa@myezo.co.za | [www.myezo.co.za](http://www.myezo.co.za)

Postnet Suite B165, Private Bag X18, Lynnwood  
Ridge, 0040, Pretoria, South Africa

645 Jacqueline Street, Unit 17 Garsfontein Office  
Park Garsfontein, Pretoria, 0081

LEBONE ENGINEERING - KLIP MIDDLE SOWETO - ENVIRONMENTAL STUDIES FOR CITY PARKS AND ZOO.

**REPLY SLIP FOR THE INVITATION TO PARTICIPATE IN AN ENVIRONMENTAL IMPACT ASSESSMENT AND ENVIRONMENTAL MANAGEMENT PROGRAMME REPORT (EMPR) UPDATE PROCESS FOR CITY PARKS AND ZOO'S ENVIRONMENTAL STUDIES THAT WILL BE UNDERTAKEN IN KLIP MIDDLE SOWETO WATER MANAGEMENT UNIT (WMU) IN JOHANNESBURG, WITHIN THE CITY OF JOHANNESBURG MUNICIPALITY, GAUTENG PROVINCE.**

Document Name: LSES-PI-Reply Slip

Document Status: Rev. 1

Date: 05 September 2016

Myezo Ref: LSES, LRES 2015/10/RS

GDARD Ref No: 002/16-17/E0097

ATTENTION: Mrs. BABALWA FATYI

TEL: 012 998 7642

FAX: 086 543 1698

Email: [babalwa@myezo.co.za](mailto:babalwa@myezo.co.za)

Table 1: I&AP comments reply slip.

Name	Surname	Organisation and address (include postal and street address)	
Telephone	Fax	E-Mail	Cell
Record your concern, comment or suggestion about the EIA/EMP update process here ( <i>you are welcome to add as many lines as you wish according to your points of submission</i> ):			

(Pty) Ltd Reg. No. 2014 / 031793 / 07

converted from CC Reg.No. 2004 / 060230 / 23

Director Babalwa Fatyí Pr.Sci.Nat (MSc)



Any particular alternative you would rather choose and why:

Interest in the project (disclose any direct business, financial, personal or other interest which they have in the approval or refusal of the application).

Signature:

**Details of another person whom you think should be consulted**

Name and surname

Address

Tel and Fax

APPENDIX E5 – MINUTES OF ANY PUBLIC AND/OR STAKEHOLDER MEETINGS



**MYEZO ENVIRONMENTAL  
MANAGEMENT SERVICES**  
*Environmental Stewardship*


LEBONE ENGINEERING - KLIP MIDDLE SOWETO -ENVIRONMENTAL STUDIES CITY PARKS AND ZOO  
PROCEEDINGS OF THE MEETING HELD WITH CITIZEN RELATIONSHIP AND URBAN MANAGEMENT  
DEPARTMENT(CRUM) ON 12 AUGUST 2016, IN GAUTENG PROVINCE


Document Name: LSES/LRES-PI-Meetings-Proceedings of the Meeting held with CRUM  
12 August 2016

Date: 12 August 2016

Myezo Ref Number: LSES, LRES 2015/10/M

Document No:	Myezo-QMS-Min-0011-2
Revision:	1
Effective Date:	30 November 2015
Status:	Final
Approval Authority:	Director

Document Approval	
Director: Myezo Environmental Management Services (Pty) Ltd.	
Name:	Babalwa Fatyi
Date:	30 November 2015
Signature:	

 <b>MYEZO ENVIRONMENTAL MANAGEMENT SERVICES</b> <i>Environmental Stewardship</i>		012 998 7642, 012 998 7641, 082 772 2418 babalwa@myezo.co.za
		Postnet Suite B165, Private Bag X18, Lynnwood Ridge, 0040, Pretoria, South Africa  645 Jacqueline Drive, Garsfontein, 0081 Pretoria, South Africa
<b>Minutes of Meeting:</b>		
<b>Venue:</b>	Jabulani Civic Centre Board Room	
<b>Date:</b>	14 August 2016	
<b>Time:</b>	10:00 – 11:00 am	
<b>Chairperson:</b>	Caspa Neluheni (CN)	
<b>Scribe:</b>	Caspa Neluheni (CN)	
<b>Date of next meeting:</b>	To be determined	
<b>Attendees</b>	<b>Apologises</b>	
Babalwa Fatyi : Myezo (BF) Caspa Neluheni : Myezo(CN) Joe Molefe : CRUM (JM) Phatiswa Mguni : CRUM (PM) Freddie Lotsoko : COJ (FL)	Kelvin Radebe Kgantshe Mofokeng Vusani Shabalala Nkele Hoseka	
	<b>Copy to</b>	
	Lebone Engineering (Pty) Ltd CRUM CoJ	

## 1. Introduction

The purpose of this meeting was to share information about projects in the Klip Middle Soweto Water Management Unit study area. This meeting was convened in response to the initial engagement meeting with members of CRUM and the Regional Manager Office of the Speaker Ward Governance Region D. In this initial engagement meeting, it was decided that the project team will meet with CRUM at their offices after they have gathered information on the planned activities in the area. The information would be used to guide proposed development in the Klip Middle Soweto project and also to avoid duplication of efforts in the area.

## 2. Objectives of the Meeting

- To follow up from previous discussions and provide away forward regarding public participation timelines and approach to engagement of ward councillors. These discussions would then culminate into the agreed structured process for the Public Participation Process (PPP).
- To identify planned and existing projects in the study area to avoid duplication of efforts .
- To share project information for the Klip Middle Soweto with CRUM.

### 3. Discussions

Discussions are outlined in Table 1.

Table 1-1: Table showing the discussions of the meeting held on 12 August 2016 with CRUM

Item	As Recorded	Action	Responsible Person	Timeframe
Opening and welcome	<p>CN welcomed every one and opened the meeting. CN informed all present that the Project Manager Mr Kelvin Radebe, Community Liaison Officer for JCPZ, Kgantshe Molefe and Manager for Design and Development for JCPZ, Vusani Shabalala sent their apologies and will not be attending the meeting.</p> <p>JM mentioned that the Divisional Manager Mr Jabu Nkosi was also not available and he also sent his apologies.</p>	General Information	CN	
Klip Middle Soweto Water Management Project	<p>FL gave a background on the project and how it was conceptualised, he explained that this project is part of 18 WMU within the Johannesburg municipality identified for rehabilitation. FL informed all that the proposed project would also be implemented in stages as per available budget allocated to the programme.</p> <p>JN request feedback on the status of the driving range at Mshenguville as the Mfolo forum have been requesting for information when the project will be completed. FL explained to the team that the golf range cannot commence as the project's Environmental Impact Assessment (EIA),</p>	General Information	FL	
		The result of the ROD issued for the project's Environmental studies, must be communicated to the community and the process must be closed out.	JCPZ	

CONTROLLED DISCLOSURE

When downloaded from the document management system, this document is uncontrolled and the responsibility rests with the user to ensure that it is in line with the authorised version on the system/server, or check with the document author or person responsible for document control.

No part of this document may be reproduced without the expressed consent of the copyright holder, Lebone Engineering (Pty) Ltd

Item	As Recorded	Action	Responsible Person	Timeframe
	<p>received a negative Record of Decision (ROD) from Gauteng Department of Agriculture and Rural Development (GDARD). FL explained that due to the spongy surface of the proposed area. Striping of the current soils to construct the driving range would result in flooding of the surrounding community and roads. It was stated that the results of the EIA were not communicated to the community about the Negative ROD that was issued.</p>			
	<p>BF gave feedback on the progress of the environmental process of the project. BF mentioned that the application form for Basic Assessment Report (BAR) was submitted to GDARD on 20/07/2016 and an acknowledgement letter was issued on 29 /07/2016. The project has 90 days to submit the BAR anticipated to be on 19 October 2016. BF mentioned that subsequent to the receiving of the reference number for the project, through the acknowledgement letter, the draft advertisement and notice has been developed for the public participation process.</p>	<p>General Information</p>	<p>BF</p>	
	<p>JM enquired about flooding in parts of the WMU, FL explained that the silt from the old mining dumps was causing the Orlando Dam to be clogged up and reducing its capacity to hold water, which has negative impacts downstream. FL also reported that the City has engaged a company that is doing research in the reprocessing of gold in the old dumps which will include rehabilitation of the erosion and the siltation.</p>	<p>General Information</p>		

CONTROLLED DISCLOSURE

When downloaded from the document management system, this document is uncontrolled and the responsibility rests with the user to ensure that it is in line with the authorised version on the system/server, or check with the document author or person responsible for document control.

No part of this document may be reproduced without the expressed consent of the copyright holder, Lebone Engineering (Pty) Ltd

Item	As Recorded	Action	Responsible Person	Timeframe
CRUM planned Projects	<p>BF informed all that the BAR is currently being compiled and is at its final stages in preparation for the public participation process. The draft version will be made available for review to the project client and then made available to stake holders through the PPP.</p> <p>JM requested the project team to share any information that they have with CRUM so that they could use for their own internal discussions.</p> <p>JM shared list of planned Capex projects for region D, the list was briefly discussed and it was discussed that some of the project have no relevance to the Klip Middle project. The relevant projects will need to be identified from the list and their location in the study will be verified with the JCIP Department on the 11th floor at the municipality.</p>	<p>To identify project information that will be shared with CRUM</p> <p>To obtain project information from JCIP.</p>	<p>CN</p> <p>CN</p>	<p>19/08/2016</p>
Public Participation Process	<p>CN reported that in the previous meeting, concerns were raised about engaging Ward Councillors and community members at the time due to the Local government elections and requested advise on the process to be followed. JM responded that the situation is still not favourable as the election process is still not concluded due to the possible coalitions and uncertainty about who the Ward Councillors will be. It was decided that the process must be given at least two weeks for it to be conclude to engage the councillors.</p>	<p>The process must be postponed by two weeks to 29/08/2016</p>	<p>CN</p>	

CONTROLLED DISCLOSURE

When downloaded from the document management system, this document is uncontrolled and the responsibility rests with the user to ensure that it is in line with the authorised version on the system/server, or check with the document author or person responsible for document control.

No part of this document may be reproduced without the expressed consent of the copyright holder, Lebone Engineering (Pty) Ltd

Item	As Recorded	Action	Responsible Person	Timeframe
	It was discussed that the Councillors Engagement Meeting can be arranged with the councillors at the CRUM offices with assistance from CRUM.	To liaise with CRUM to arrange a meeting with ward councillors for the study area at the CRUM office.	CN/JM	29/08/2016
	During the waiting period, the project team will be planning and making logistic arrangement for the proposed meetings.	Arrange planning meeting with JCPZ liaison department.	CN	19/08/2016

CONTROLLED DISCLOSURE

When downloaded from the document management system, this document is uncontrolled and the responsibility rests with the user to ensure that it is in line with the authorised version on the system/server, or check with the document author or person responsible for document control.

No part of this document may be reproduced without the expressed consent of the copyright holder, Lebone Engineering (Pty) Ltd



4. Way forward

- To plan a meeting with Ward Councillors.
- To plan community meetings for public participation.

5. Table of Amendments

Revision	Description of Amendment	Amended by	Approved by	Date

6. Approval

I, the undersigned, hereby acknowledge understanding of the above mentioned minutes. As such, I hereby approve the content in this document as compiled for Lebone Engineering (Pty) Ltd.

Name \_\_\_\_\_ Date \_\_\_\_\_ Signature \_\_\_\_\_

CONTROLLED DISCLOSURE

When downloaded from the document management system, this document is uncontrolled and the responsibility rests with the user to ensure that it is in line with the authorised version on the system/server, or check with the document author or person responsible for document control.

No part of this document may be reproduced without the expressed consent of the copyright holder, Lebone Engineering (Pty) Ltd

## 7. Acceptance

This document has been seen and accepted by:

### CONTROLLED DISCLOSURE

When downloaded from the document management system, this document is uncontrolled and the responsibility rests with the user to ensure that it is in line with the authorised version on the system/server, or check with the document author or person responsible for document control.

No part of this document may be reproduced without the expressed consent of the copyright holder, Lebone Engineering (Pty) Ltd

APPENDIX E6 - COMMENTS AND RESPONSES REPORT