

**Perdekraal West Wind Energy Facility Site 1
and Associated Infrastructure,
Western Cape Province**

Environmental Sensitivity and Layout Map



Legend

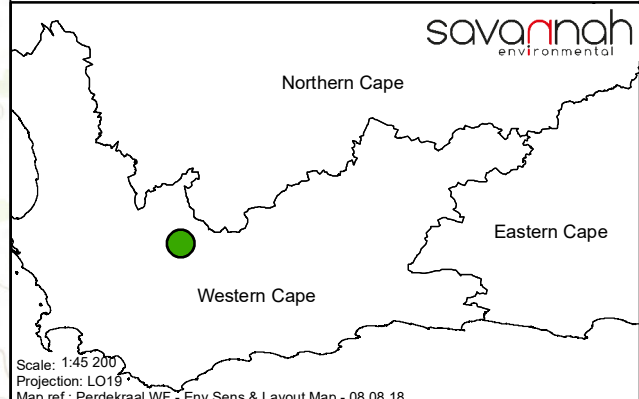
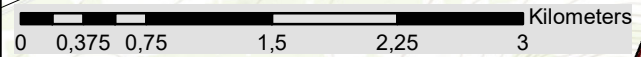
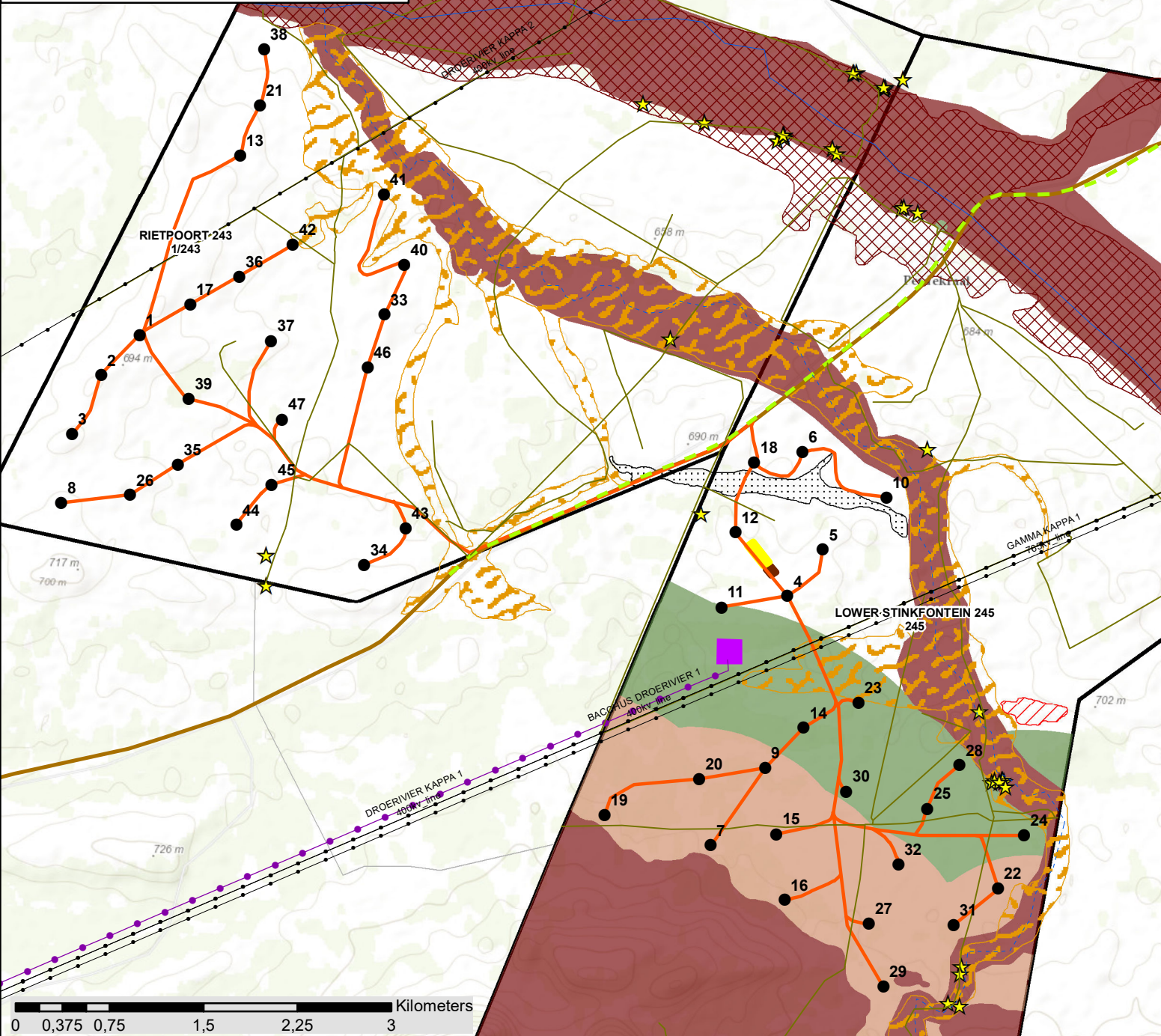
- Existing Power Line
- Perennial River
- Non-perennial River
- Main Road
- Affected Properties
- Farm Portion

Layout Plan:

- Turbine
- Preferred Power Line
- Access Roads and Cables (5m wide)
- Existing Farm Road
- Existing Public Road
- Preferred Substation
- Laydown Area
- OM Building

Environmental Sensitivities:

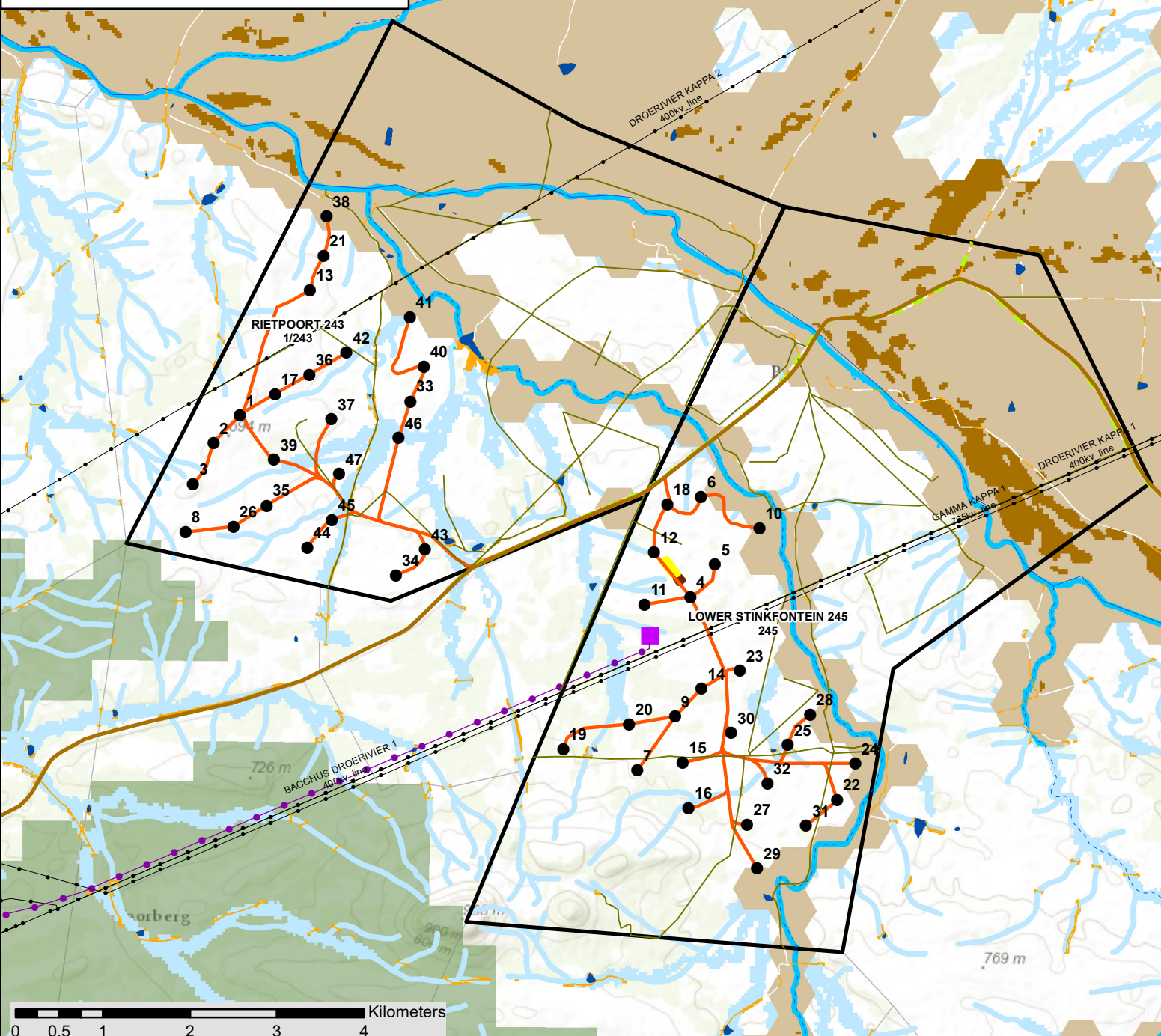
- Sensitive Heritage Feature
- Primary Riparian Corridor (Ecological No-Go Area)
- Didymaotus Gravel Patch (Ecological No-Go Area)
- Secondary Riparian Corridor (High Ecological Sensitivity)
- Gravel Outcrop (High Ecological Sensitivity)
- High Bat Sensitivity
- Medium-High Bat Sensitivity
- Medium Bat Sensitivity



Scale: 1:45 200
Projection: LO19
Map ref.: Perdekraal WF - Env Sens & Layout Map - 08.08.18

**Perdekraal West Wind Energy Facility Site 1
and Associated Infrastructure,
Western Cape Province**

Formal Environmental Sensitivity and Layout Map

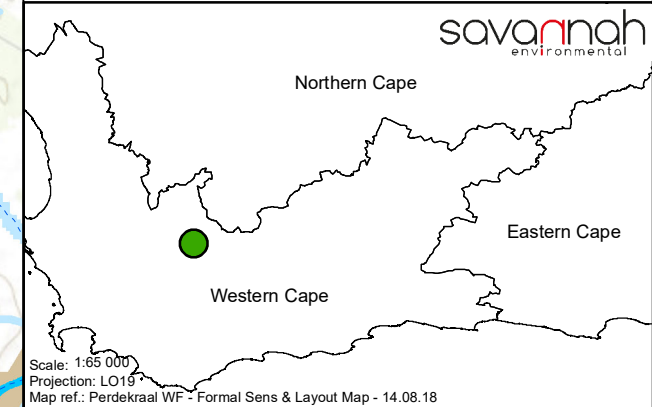
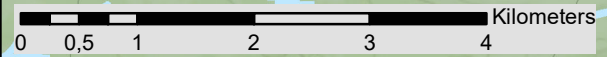


Legend

- Existing Power Line
- Main Road
- Perennial River
- Non-perennial River
- Affected Properties
- Farm Portion
- Layout Plan:**
- Turbine
- Preferred Power Line
- Access Roads and Cables (5m wide)
- Existing Farm Road
- Existing Public Road
- Preferred Substation
- Laydown Area
- OM Building

Formal Environmental Sensitivities:

- NFEPA Wetlands
- CBA 1 - Aquatic
- CBA 1 - Terrestrial
- CBA 2 - Terrestrial
- ESA 1 - Aquatic
- ESA 2
- Tankwa Cedarberg Roggeveld NPAES



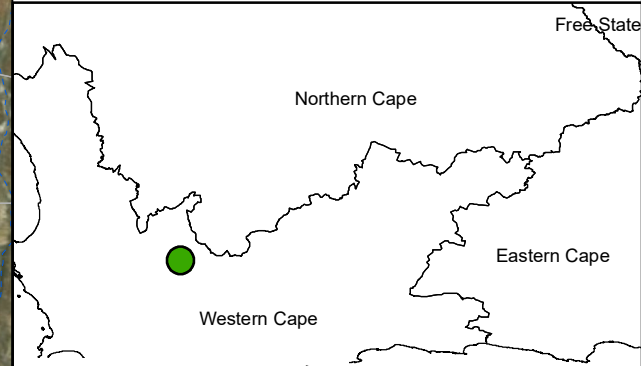
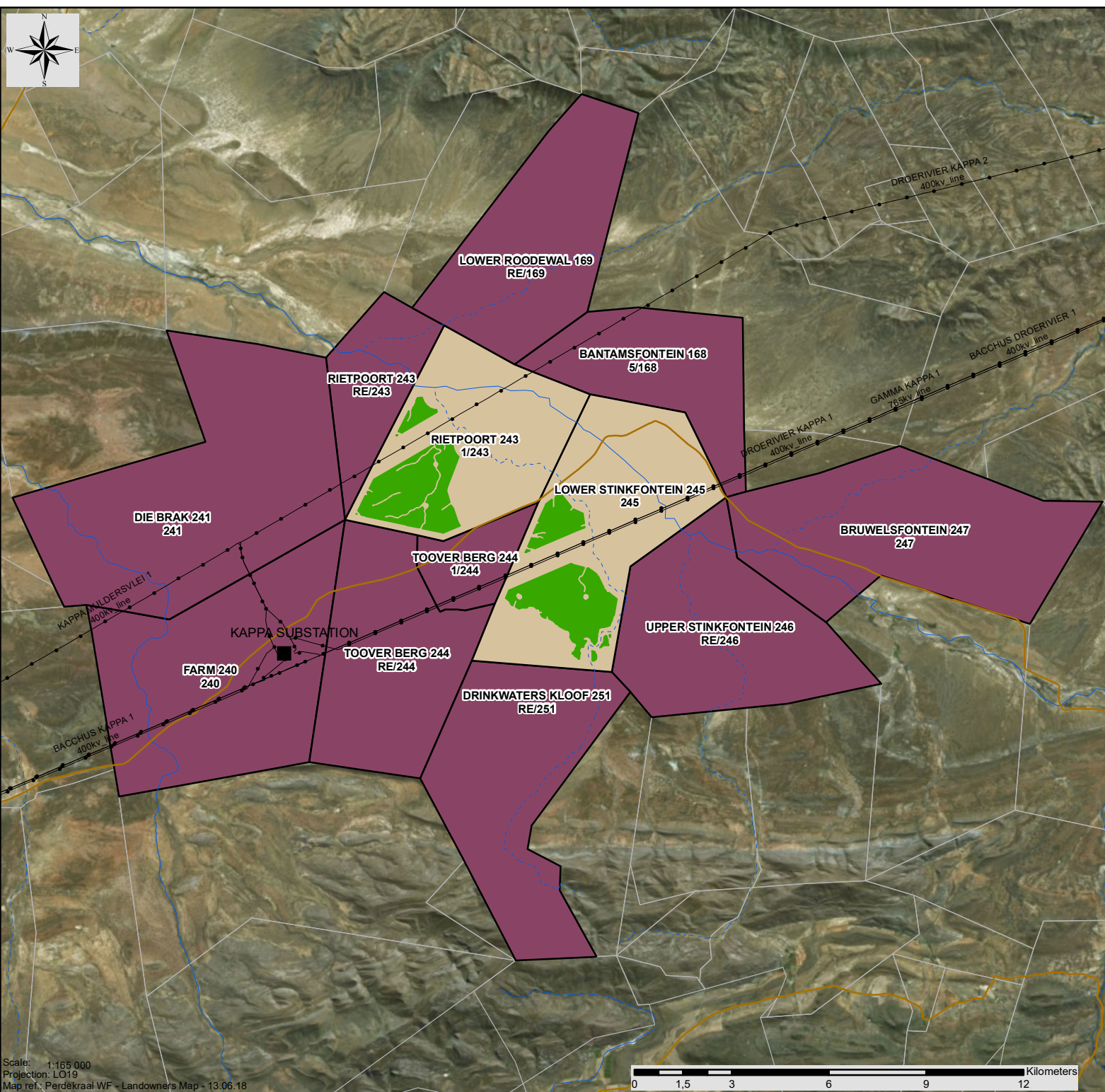


Perdekraal Wind Energy Facility, Western Cape Province

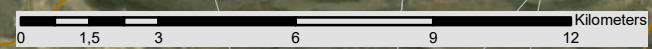
Landowners Map

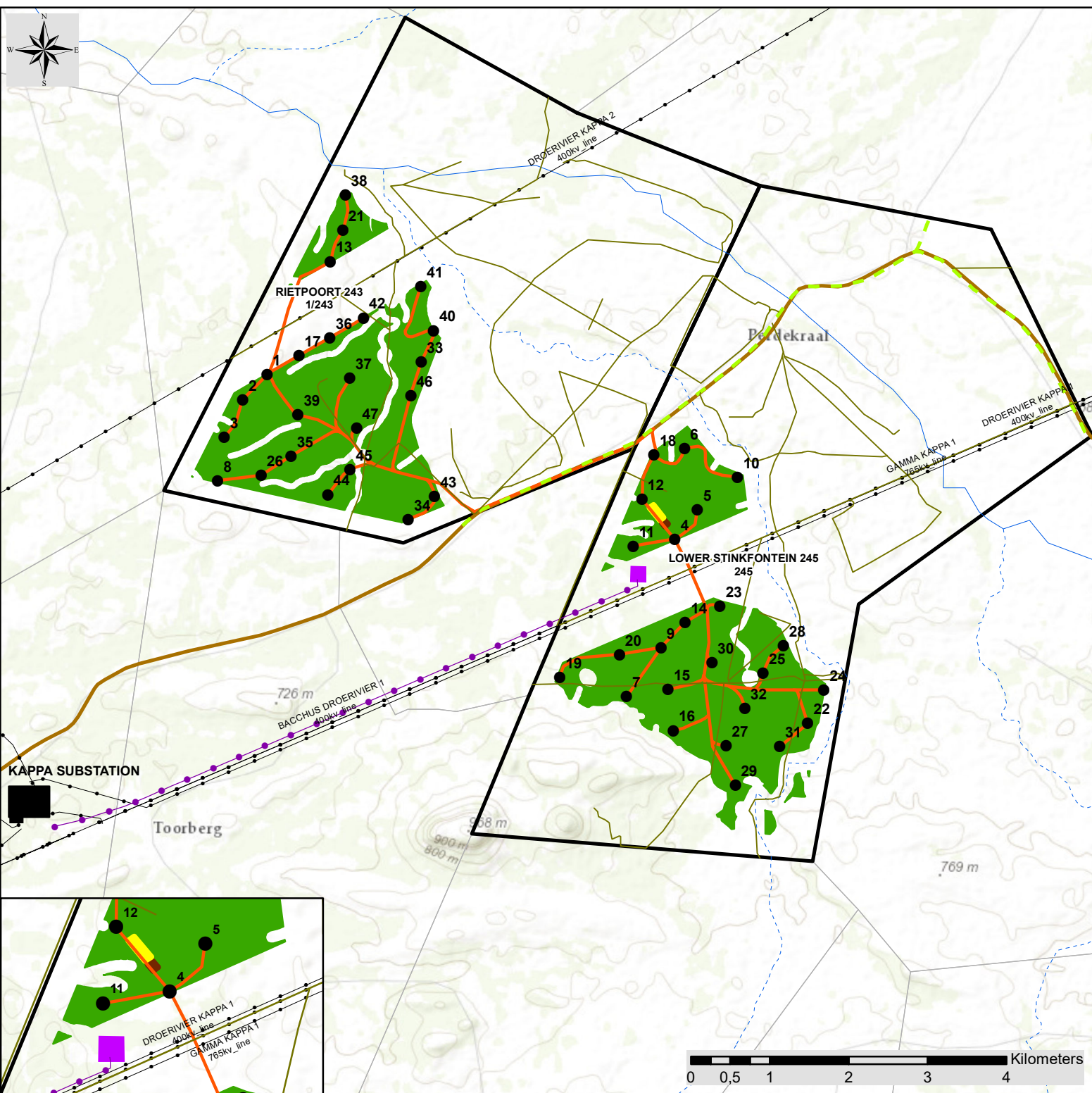
Legend

- Substation
- Existing Power Line
- Main Road
- Perennial River
- - - Non-perennial River
- Development Area
- Affected Properties
- Neighbouring Properties
- Farm Portion



Scale: 1:165 000
Projection: LO19
Map ref.: Perdekraal WF - Landowners Map - 13.06.18



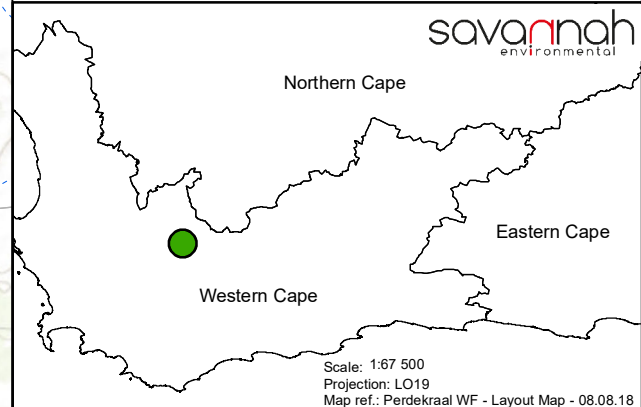


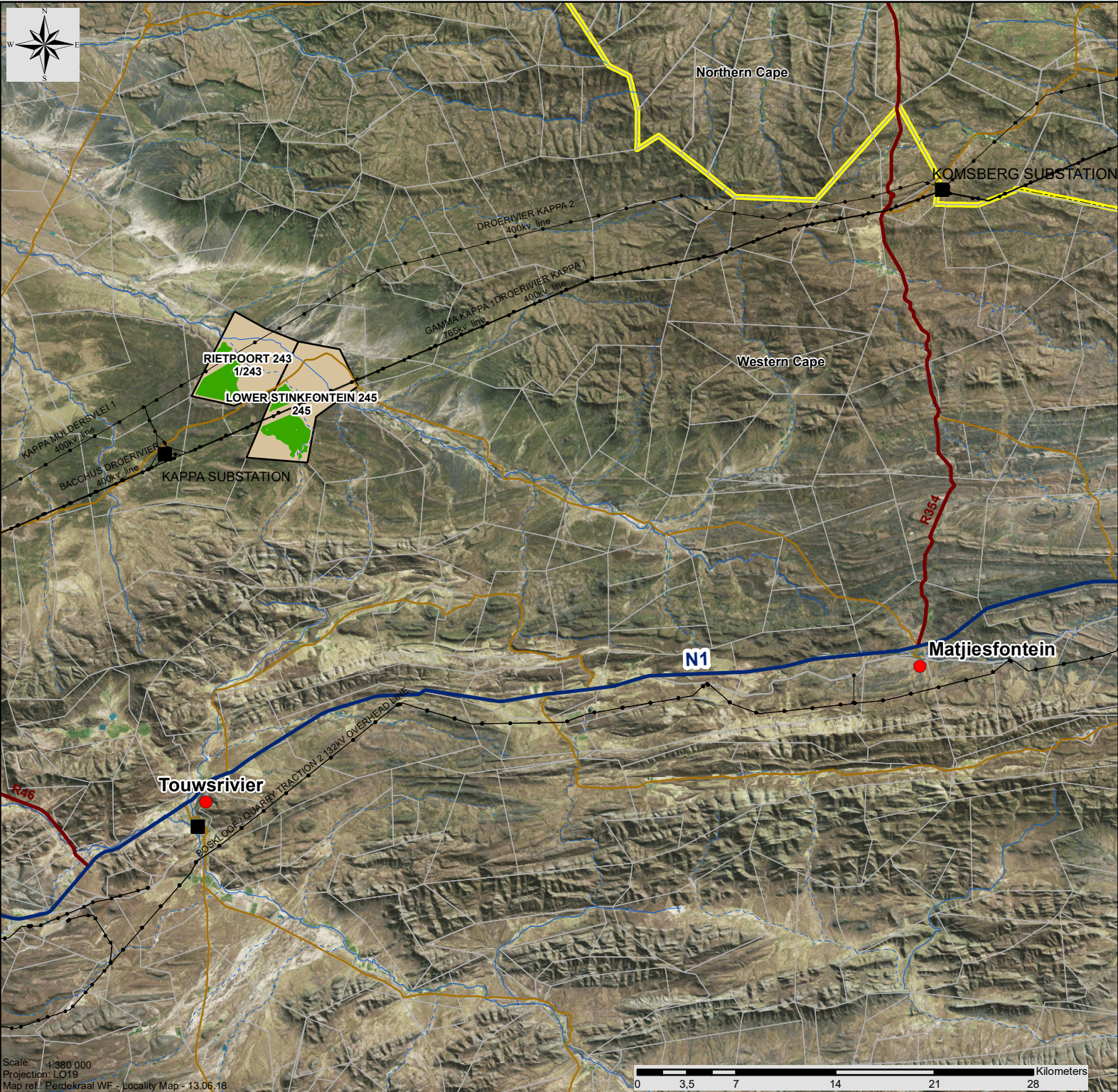
Perdekraal West Wind Energy Facility Site 1 and Associated Infrastructure, Western Cape Province

Updated Layout Map

Legend

- Substation
 - Existing Power Line
 - Main Road
 - Perennial River
 - Non-perennial River
 - Development Area
 - Affected Properties
 - Farm Portion
- Layout Plan:**
- Turbine
 - Preferred Power Line
 - Access Roads and Cables (5m wide)
 - Existing Farm Road
 - Existing Public Road
 - Preferred Substation
 - Laydown Area
 - OM Building



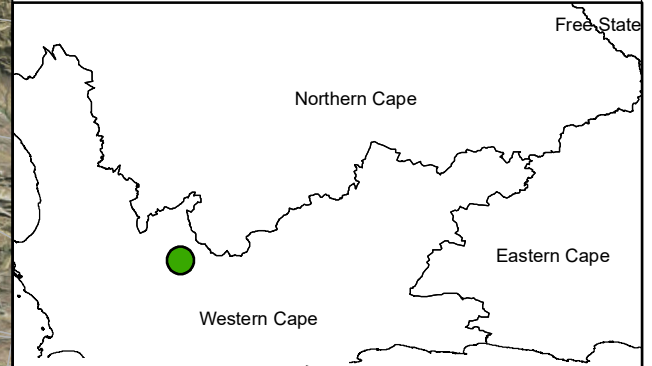


Perdekraal Wind Energy Facility, Western Cape Province

Locality Map

Legend

- Town
- Substation
- Existing Power Line
- National Road
- Regional Road
- Main Road
- Perennial River
- Non-perennial River
- Provincial Boundary
- Farm Portion
- Affected Properties
- Development Area



Scale: 1:380 000
 Projection: L013
 Map ref.: Perdekraal WF - Locality Map - 13.06.18

