

COMMENTS AND RESPONSE REPORT (EIA PHASE)

**Proposed “PERSEUS - KRONOS” 765kV Transmission Powerline & Substations Upgrades,
Northern Cape and Free State Provinces, DEA Ref: 14/12/16/3/3/2/438**

I&AP	Concerns & Queries	Date	Response from Mokgope / Eskom
SAHRA Natasha Higgitt	Response to the Interim Comments	22-02-2016	<ul style="list-style-type: none"> – The Palaeontological Study Report is provided in Appendix M in the Final EIR for DEA's review. The Final EIR and Palaeontological Study Report will also be sent to SAHRA for commenting. – The Heritage Visual Assessment for deviation 1A will be conducted prior to construction phase as per SAHRA comments. This will be conducted during the walk down phase. – Please note: 06-12-2016. EAP: The initial Deviation 1A has been withdrawn. The reason being, Mainstream solar properties are traversed by this deviation. <p>EAP: Date: 31-05-16.</p>

Mainstream
Renewable
Power Energy
Mercia
Grimbeek
(Development
Manager)

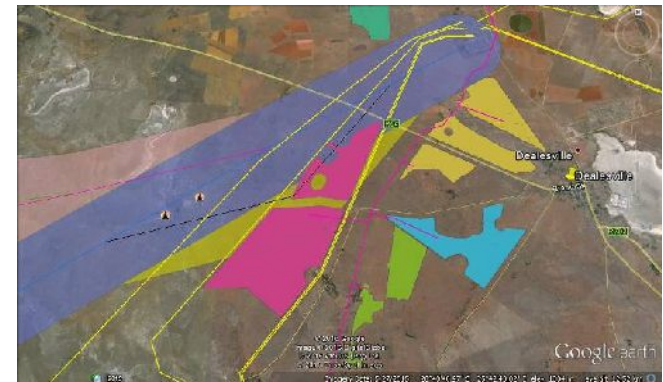
E-mail correspondence:
Date: 30-05-16. Mercia.Grimbeek@mainstreamrp.com

The Final Environmental Impact Assessment Report dated April 2016, for Eskom's proposed 765kV powerline from Perseus to Kronos has reference.

Mainstream Renewable Power has submitted a suite of solar projects in this area for approval to the Department of Environmental Affairs, one of which is directly impacted by the proposed routing of the 765kV line. The Leliehoek Solar facility, DEA Ref No. 14/12/16/3/6/2/728 is anticipated to receive environmental authorisation within the next few weeks and forms part of a suite of 11 solar facilities which have been submitted. For ease of reference please see the attached shape files detailing the projects in relation to the proposed power line routing.

Mainstream has legal agreements pertaining to the land lease and grid servitude in place and it is our intention to bid these projects as part of the Department of Energy's Renewable Energy Independent Power Producer Procurement Program.

Thank you for bringing the affected solar developments to our attention and for providing the kmz files. As indicated in the attached Google Earth image, portion of the “pink area” solar facility is traversed by Deviation 1A, which is the black line within the yellow 2km corridor (1km on either side of the black line).



A suggestion is to possibly follow the blue corridor. Do you

COMMENTS AND RESPONSE REPORT (EIA PHASE)

**Proposed “PERSEUS - KRONOS” 765kV Transmission Powerline & Substations Upgrades,
Northern Cape and Free State Provinces, DEA Ref: 14/12/16/3/3/2/438**

I&AP	Concerns & Queries	Date	Response from Mokgope / Eskom
	<p>In light of the above we request that the proposed facilities be accommodated in the routing proposed in the FEIR for the 765kV line.</p> <p>Date: 31-05-16. Mercia.Grimbeek@mainstreamrp.com</p> <p>Agreed, please move into the blue shaded area. The required buffer from the solar facility is 50m. Should you have any further questions please do not hesitate to contact me.</p>		<p>agree to this regard?</p> <p>What is the required buffer distance between your solar facility fence and Eskom servitude edge line? We would like to know how far we may shift the proposed line away from the solar facility.</p> <p>Please advice as soon as possible to start the deviations of the proposed power line. Thank you. EAP: Date: 31-05-16.</p> <p>Thank you for your response. Eskom will be notified to this regard. We will send you an update of the amended report once finalised. EAP: Date: 06-03-17.</p> <p>Herewith a portion of the finalised map, illustrating your area. It does not include the initial Deviation 1A that affected your development.</p>

