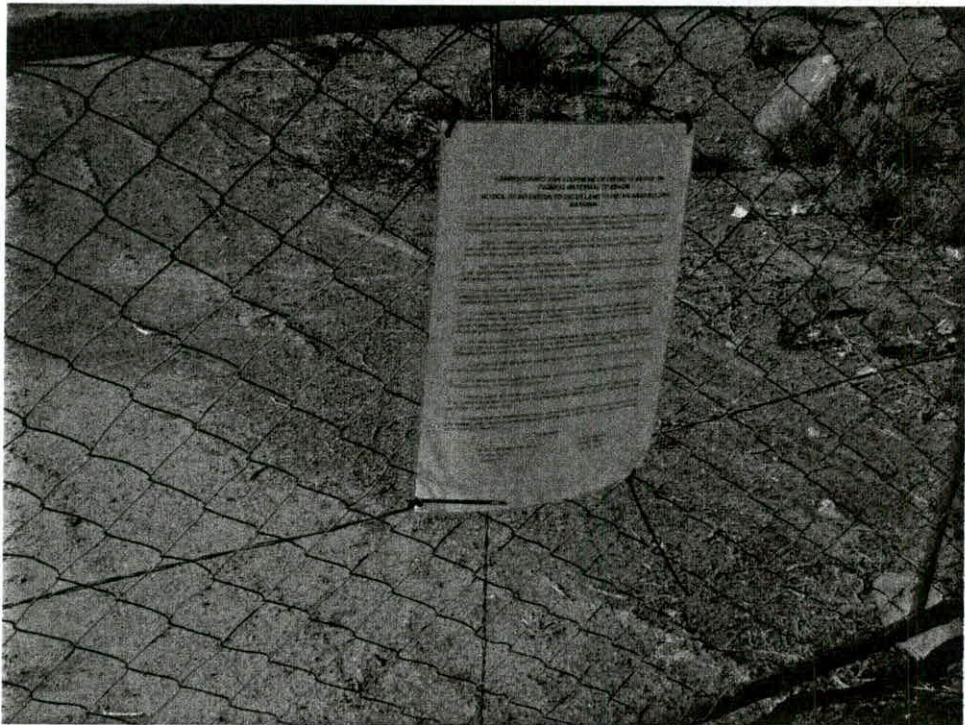
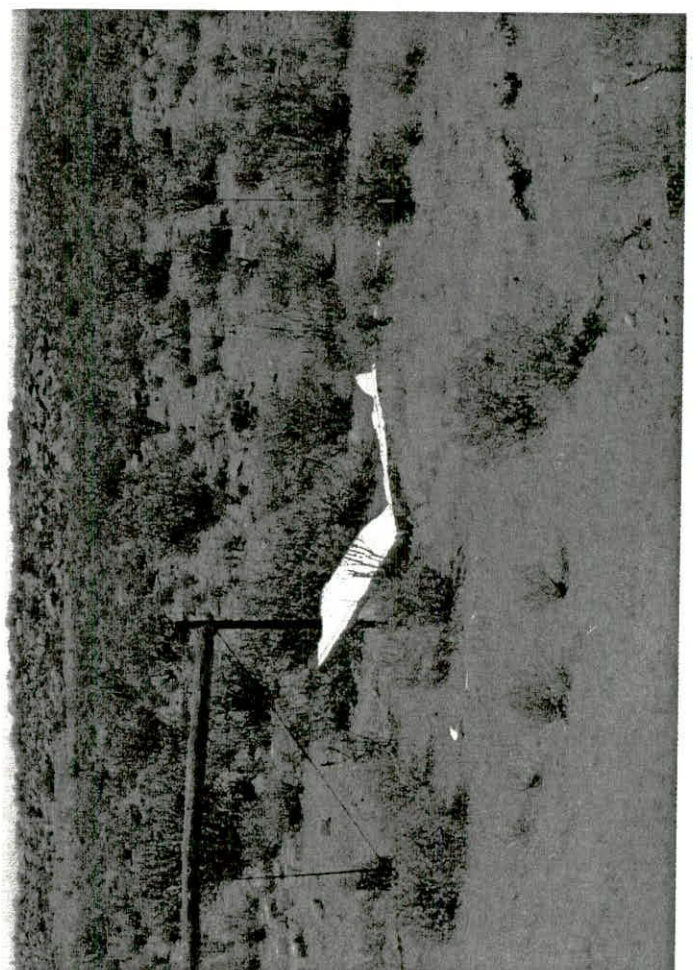
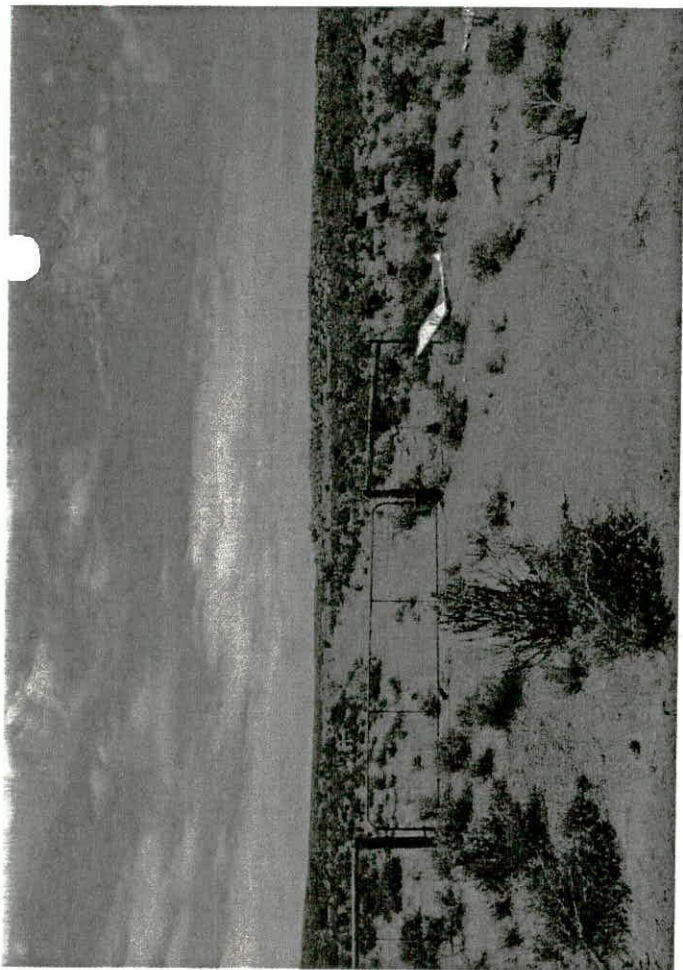


dsc01011 (1632x1224x24b jpeg)

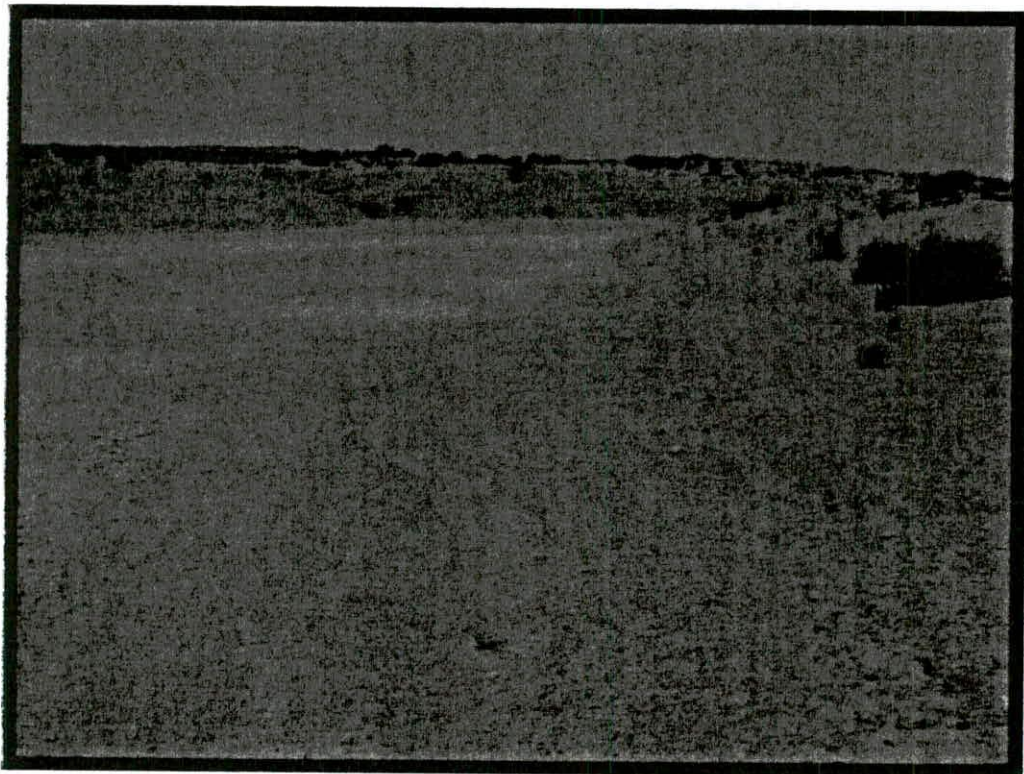








**Phase 1 AIA and PIA of 30 gravel quarries on the  
R354 between Calvinia and Sutherland,  
Northern Cape Province.**



Report prepared for  
Terraworks Environmental Consultants  
by  
Lloyd Rossouw  
National Museum, Bloemfontein  
18 January 2007