

The Proposed Establishment of a 2400 Sow Unit, a 4800 Grower Unit and a Slurry Lagoon System on Rem of the Farm Wilde Perde Vlei No. 1004 and / or Portion 1 of the Farm Smaldeel No. 1390, located near Winterton, uThukela District Municipality, KwaZulu-Natal

BACKGROUND INFORMATION DOCUMENT

November 2014



WHAT IS THE PURPOSE OF THIS DOCUMENT?

The purpose of this document is to:

- ◆ Inform Interested and Affected Parties (I&APs) about the proposed project, and to invite them to participate;
- ◆ Provide a brief background on the proposed project; and
- ◆ Explain the aims and objectives of the Environmental Basic Assessment process.



WHAT IS THE BACKGROUND TO THIS DEVELOPMENT?

The Applicant, Frey's Food Brands (Pty) Ltd, proposes to establish a 2400 Sow Unit, a 4800 Grower Unit and a Slurry Lagoon System on Rem of the Farm Wilde Perde Vlei No. 1004 and / or Portion 1 of the Farm Smaldeel No. 1390, located near Winterton, uThukela District Municipality, KwaZulu-Natal.

In terms of Regulation 54 of the Environmental Impact Assessment (EIA) Regulations 2010, under Section 24(5), 24M and 44 of the National Environmental Management Act (107 of 1998), published in Government Notice No. R. 543 of 2010, the proposed development triggers the following Listed Activities, which require a Basic Assessment process to be conducted:

GNR 544	Part 4	<p><i>The construction of facilities or infrastructure for the concentration of animals for the purposes of commercial production in densities that exceed –</i></p> <p><i>ii) 8 square meters per small stock unit and; ... b). more than 250 pigs per facility excluding piglets that are not yet weaned ...</i></p> <p>The proposed development will house animals in densities that exceed 8 m² per small stock unit and will house more than 250 animals.</p>
GNR 544	Part 8	<p><i>The construction of a hatchery or agri-industrial infrastructure outside industrial complexes where the development footprint covers an area of</i></p>

		<p>2 000 square metres or more.</p> <p>The proposed development comprises agri-industrial infrastructure with a development footprint of more than 2000 m².</p>
GNR 544	Part 23	<p><i>The transformation of undeveloped, vacant or derelict land to - ... ii) residential, retail, commercial, recreational, industrial or institutional use, outside an urban area and where the total area to be transformed is bigger than 1 ha, but less than 20 ha.</i></p> <p>The proposed development will transform an undeveloped area of more than 1 ha and less than 20 ha to commercial land use, outside of an urban area.</p>
GNR 544	Part 11	<p><i>The construction of:...</i></p> <p><i>(i) canals;</i></p> <p><i>(ii) channels;</i></p> <p><i>(iii) bridges;...</i></p> <p><i>(x) buildings exceeding 50 square metres in size; or</i></p> <p><i>(xi) infrastructure or structures covering 50 square metres or more where such construction occurs within a watercourse or within 32 metres of a water course, measured from the edge of a watercourse, excluding where such construction will occur behind the development setback line.</i></p> <p>The applicability of this Listed Activity will be confirmed or removed during the assessment process once infrastructure has been confirmed.</p>
GNR 544	Part 18	<p><i>The infilling or depositing of any material of more than 5 cubic metres into, or the dredging, excavation, removal or moving of soil, sand, shells, shell grit, pebbles or rock or more than 5 cubic metres from:</i></p> <p><i>(i) a watercourse</i></p> <p>The applicability of this Listed Activity will be confirmed or removed during the assessment process once infrastructure has been confirmed.</p>
GNR 921	Category A: (1)	<p><i>The storage of general waste in lagoons</i></p> <p>The proposed effluent lagoons will hold piggery effluent, which is classed as general waste.</p>
GNR 921	Category A: (6)	<p><i>The treatment of general waste using any form of treatment at a facility that has the capacity to process in excess of 10 tons but less than 100 tons.</i></p> <p>The proposed development will have capacity to process general waste (piggery effluent) in excess of 10 tons but less than 100 tons.</p>
GNR 921	Category A: (12)	<p><i>The construction of a facility for a waste management activity listed in Category A of this Schedule (not in isolation to associated waste management activity).</i></p> <p>The proposed development will comprise the construction of a facility that triggers Category A: Activities 1 and 6.</p>

Under Government Notice No R. 543 of 2010, the Applicant, Frey's Food Brands (Pty) Ltd, is required to appoint an independent Environmental Assessment Practitioner (EAP) to conduct the environmental authorisation process. Accordingly, the Applicant has appointed Green Door Environmental to conduct the Basic Assessment Process.

In addition to the above, the proposed development triggers Listed Activities within the National Environmental Management: Waste Act (59 of 2008), published in Government Notice No. R. 921 of 2013, and in Section 21 of the National Water Act (36 of 1998). Thus the proposed development also requires a Waste Licence Application and Water Use License Application. These will also be conducted by the EAP, in addition to the Basic Assessment Process.



WHAT IS PROPOSED?

The Applicant proposes to establish the following new piggery infrastructure on Rem of the Farm Wilde Perde Vlei No. 1004 and / or Portion 1 of the Farm Smaldeel No. 1390, located near Winterton, within the Okhahlamba Local and the uThukela District and Municipalities, KwaZulu-Natal:

- 1 x 2400 Sow Unit,
- 1 x 4800 Grower Unit; and
- 1 x Slurry Lagoon System

Refer to Figure 1 for a locality map.



WHERE IS THE PROPOSED DEVELOPMENT?

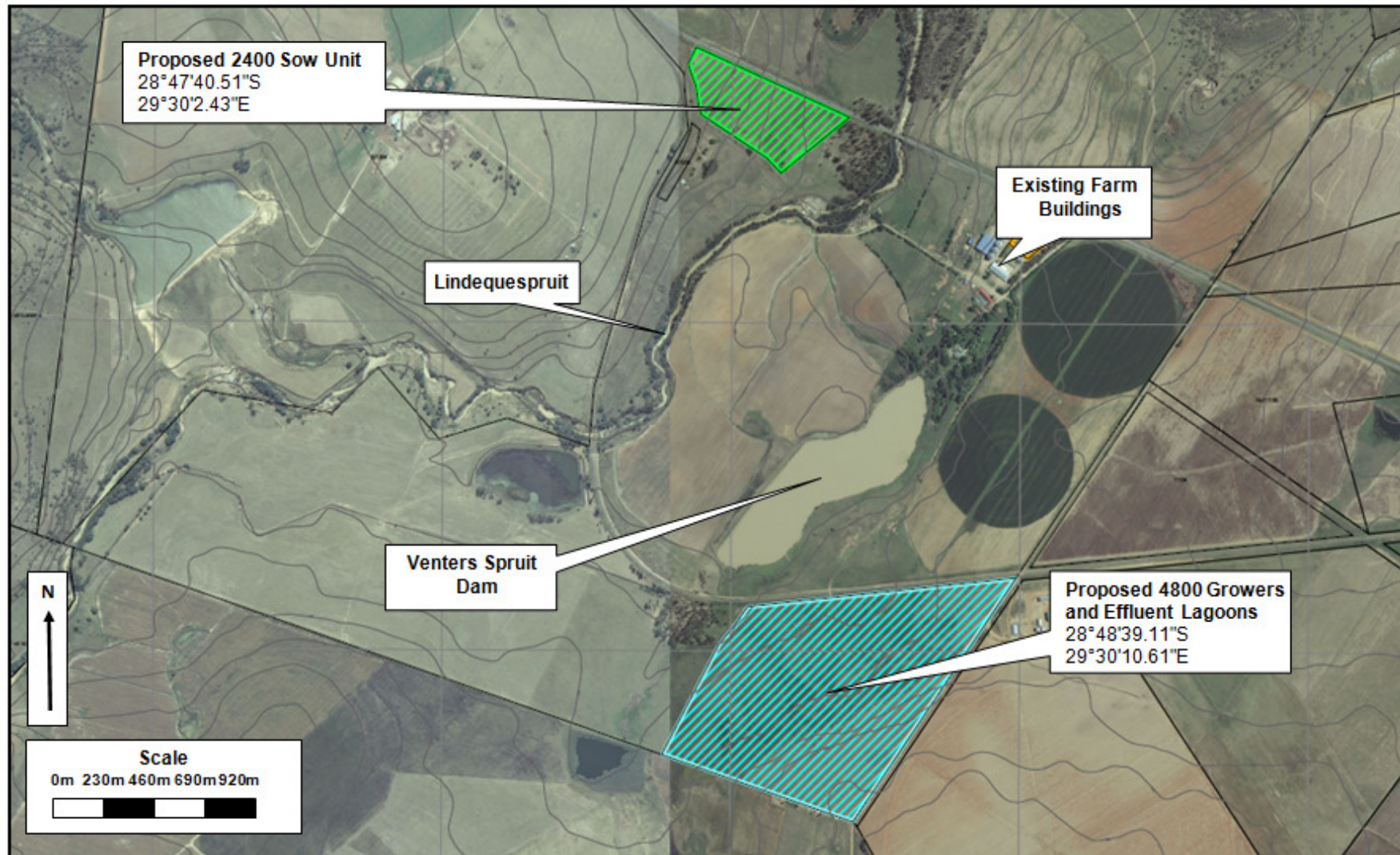


Figure 1: Aerial map showing the proposed sites and surrounding areas



WHAT IS THE AIM OF AN ENVIRONMENTAL BASIC ASSESSMENT (BA)?

The Basic Assessment process aims to:

- ◆ Inform and involve all potentially Interested and Affected Parties (I&APs) of the proposed development;
- ◆ Identify the potential impacts (positive and negative) that the proposed development may have on the ecological and socio-economic environment;
- ◆ Provide recommendations based on the identified impacts and conduct further specialist studies if necessary; and
- ◆ Provide the Department of Agriculture, Economic Development, Tourism and Environmental Affairs (DEDTEA) with enough information to make an informed decision regarding the proposed development.



WHAT IS INVOLVED IN THE EIA PROCESS FOR BASIC ASSESSMENT?

The Basic Assessment Process can be described as follows:

1. *Application Form:*
An official Application Form is required to be completed and submitted to the Competent Authority. This Form provides information on the property, a description of the proposed development and lists the relevant listed activities which are triggered by this proposed development.
2. *Public Participation:*
The general public and relevant Authorities are notified of the proposed development through newspaper adverts, site notices and direct consultation. Alternative methods will be employed to inform those I&APs who may be illiterate, disabled or otherwise disadvantaged. Should you be aware of anyone who might be interested in this project, but has not been notified, please send the relevant contact details to Green Door Environmental. This Background information Document will be circulated to neighbouring landowners, relevant authorities and any other persons registered as I&APs following the adverts and site notices.
3. *Identification of Impacts and Alternatives*
Environmental issues, concerns, development constraints and possible development alternatives will be identified using professional judgement, project information, experience of similar projects, a review of available literature, site visits, and consultation with authorities and the public.
4. *Impact Evaluation*
The significance of environmental issues will be evaluated in terms of their expected extent, intensity, duration and probability of occurrence.
5. *Mitigation and Management Measures*
Measures to manage and minimise impacts to within acceptable levels, as well as measures to maximise the socio-economic benefits associated with the development, will be identified and recorded in the Basic Assessment Report. An Environmental Management Programme (EMPr) will be compiled to facilitate the implementation of mitigation measures.
6. *Reporting*
The Basic Assessment Report, Waste License Application, Water Use License Application and Draft EMPr will be made available for review and comment by all I&APs and relevant authorities. A Final Basic Assessment Report and EMPr will be compiled and will include comments received on the circulated Basic Assessment Report.
7. *Authority Decision*
The Final Basic Assessment Report and EMPr will be used by DEDTEA as the basis for the decision on whether the proposed development should be approved or not.



WHAT POTENTIAL ENVIRONMENTAL IMPACTS HAVE INITIALLY BEEN IDENTIFIED?

The following issues have been identified as potentially problematic and will, amongst other issues, be investigated during the Basic Assessment Process:

- ◆ Impacts on the surrounding water systems;
- ◆ Impacts on biodiversity; and
- ◆ Visual, odour and noise impacts.

