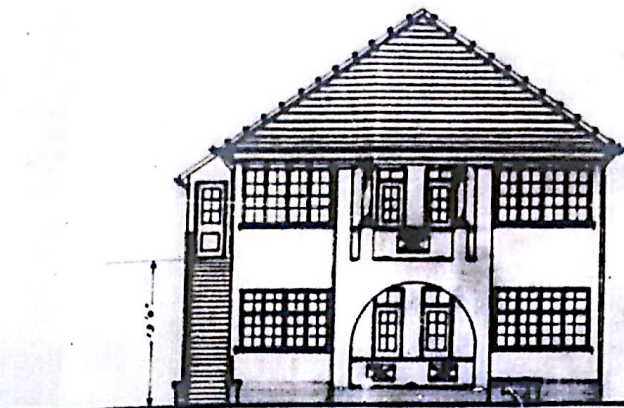
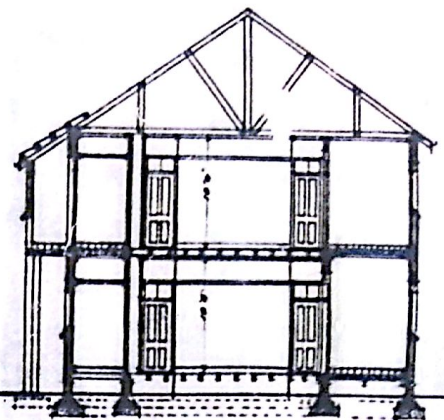


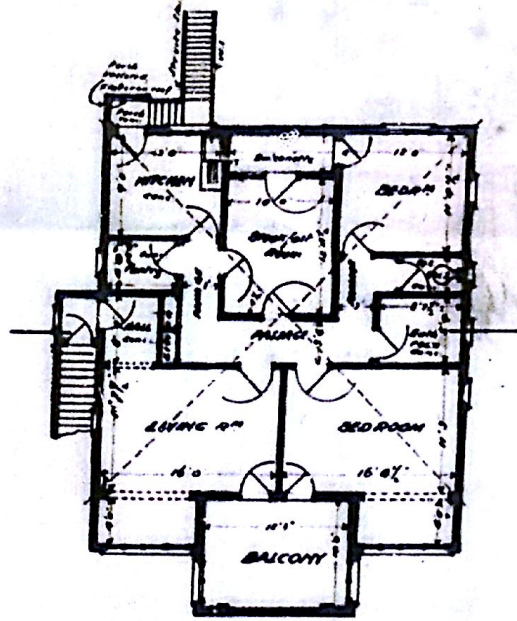
MUSGRAVE AVENUE



FRONT ELEVATION



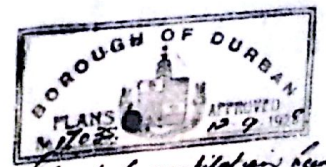
SECTION AB



PROPOSED FLATS  
for R.B. LYLE ESQ

Scale 1/8" = 1'-0"

Prepared by  
Hobbs & Brown  
Architects  
Aug. 1928



Subject to conditions being  
transmitted & fully explained  
at  
Municipal Council