



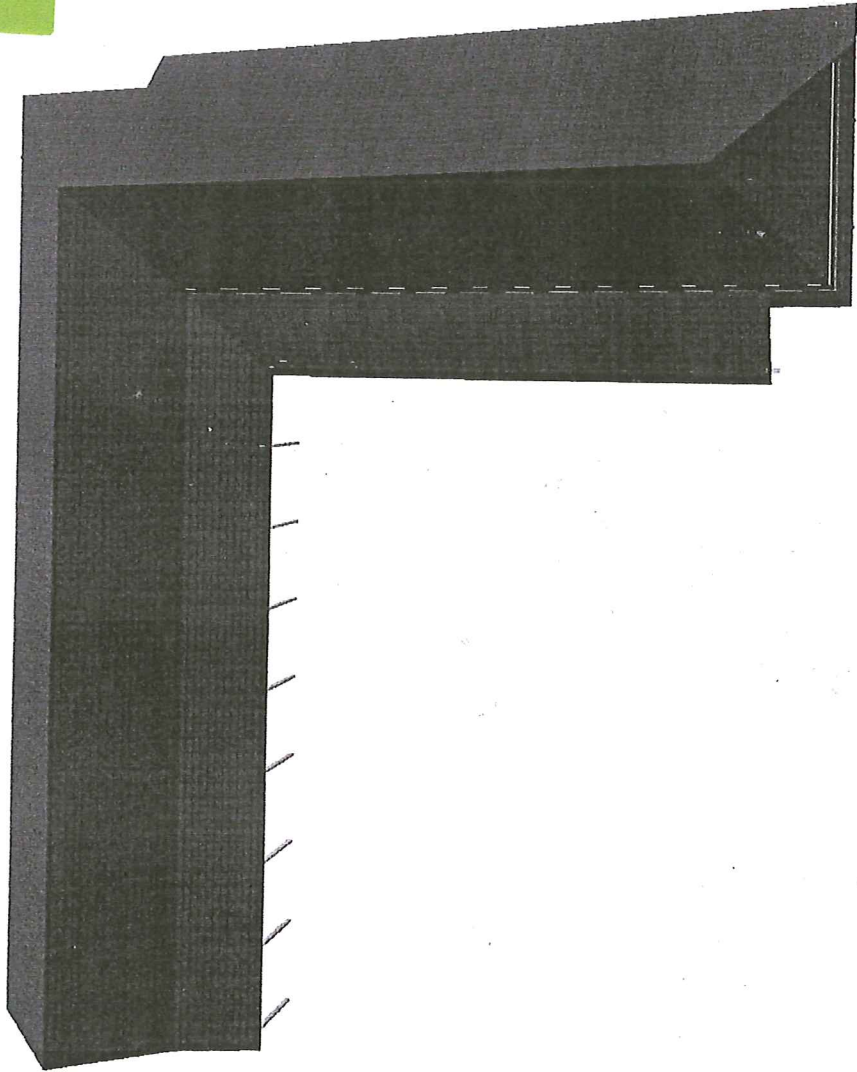
COLIN B. ARMSTRONG
Pr. Eng., B.Sc. Civ. Eng
P.L. No. P5 1008185

Cell: 083 950 4290
Tel: ~~031 209 2045~~
Fax: ~~031 209 2045~~
Email: colarm@mweb.co.za

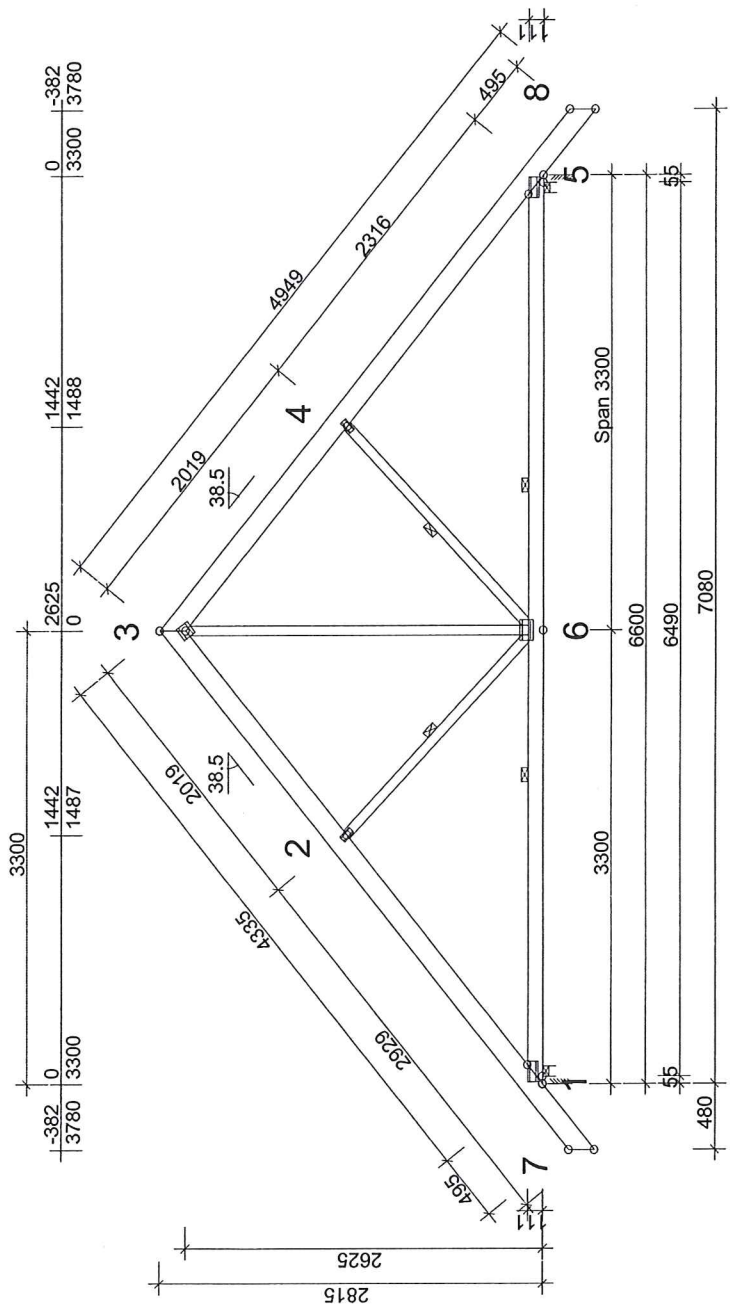
21 Essenlea Lodge
5 Pines Road
Durban, 4001
P.O. Box 37515
Overport, 4067

STRUCTURAL TIMBER CONSULTANT

CB Armstrong
20/10/2021



T2 - 33 no. 1-ply
 X INDICATES BRACED WEB
 SEE INFO SHEET ...



GENERAL DIRECTIONS:
 TRUSS CALCULATED WITH COMPUTER SOFTWARE.
 "TRUSS" (TG, NR), LIC. NO: 9500
 FORCES HAVE BEEN CALCULATED ACCORDING TO
 1 ORDER DEFORMATION THEORY.
 CODE TMBER: SANS 0163-2 (2001)
 CODE FASTENER: SANS 0163-2 (2001)

GENERAL SETTINGS:

TIMBER THICKNESS: (mm)	36
TRUSS CENTRES: (mm)	760

LOADS (N/m²):

T/C LIVE LOAD:	454
WIND LOAD:	400
LIVE LOAD:	NO 1 FREE 0

DEAD LOADS: SEE TIMBER TABLE
 OTHER LOADS AS PER CALC. PRINT-OUT

SUPPORT REACTIONS (N/kNm):

JOINT NO	DIR.	LCL MAX	LCM MAX	LCS MAX	LC VS	SUP-W, MM
1	Vert	2346	0	3651	493	32
5	Vert	2346	0	3651	493	32

TOTAL NUMBER OF FAILED PLATES = 0

MAX DEFORMATION (mm):

JOINT NO	VERT.	HORIZ.	LC NO.
2-3	2.5	1.5	3
3-4	2.2	-0.5	2
5	0.0	0.9	2

FOR DEFORMATION AT OTHER POINTS - SEE CALC PRINTOUT



DRAWN BY: THAGERN
 14.10.2021
 LIC: D861B87C78CE1

CHECKED: 1314TG

UMKOMAAS PRIMARY SCHOOL
 48 BISSET ROAD
 UMKOMAAS
 GRADE 1 & 2 CLASS BLOCK

SCALE 1:0
 DRAWING NUMBER: 1314TG - ASR - 04
 REG.

Handwritten signature and date: 20.10.2021

FASTENER LOCATION TOLERANCE: 10 mm

FASTENERS - SPLICES:

JOINT NO	PLATE TYPE	WIDTH mm	LENGTH mm	CSI %
1	TRIPLT	75	150	89
2	TRIPLT	50	100	67
3	TRIPLT	100	100	77
4	TRIPLT	50	100	67
5	TRIPLT	75	150	89
6	TRIPLT	100	150	82

FASTENERS - SPLICES EXCL:

TIMBER: TRUSS FROM - TO	DEPTH mm	GRADE	BRACING mm/pcs	LOAD N/mm	CSI %
3-7	149	SAP5	320	510	39
3-8	149	SAP5	320	510	36
5-1	111	SAP5	2600	120	41
3-6	73	SAP5	None		19
2-6	73	SAP5	1 pcs		11
4-6	73	SAP5	1 pcs		11

VERSION: 2.3.120
 TIME: 11.01