





# MANDENI LOCAL MUNICIPALITY



## ISITHEBE RURAL SUBSIDISED HOUSING DEVELOPMENT

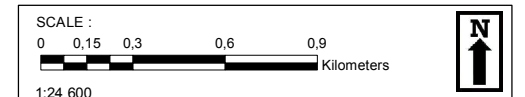
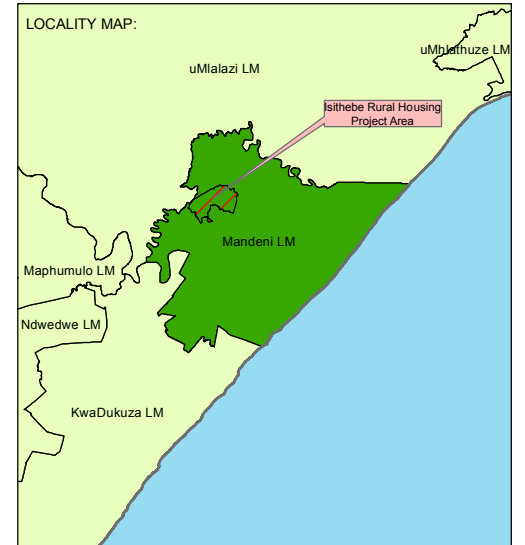
### PROJECT AREA

#### Legend

-  Isithebe Rural Project Area
-  Wards
-  Tribal Authorities
-  Local Municipal Boundaries

#### River Network

-  Non-Perennial Rivers and Streams
-  Perennial Rivers and Streams




DATE : APRIL 2016

MAP REFERENCE/ VERSION NUMBER : Version 1

COORDINATE SYSTEM : Municipal WGS84 (Lo31)

PREPARED BY:



**K2M ENVIRONMENTAL (PTY) LTD**  
 33 Mmini Road  
 Kloof 3610

Postnet Suite #509  
 Private Bag X4  
 Kloof 3640

Tel : + 27 (0) 31 764 6743  
 Fax : + 27 (0) 31 764 2354  
 Cell : 082 776 0881

E-mail: gert@k2m.co.za

Environmental Impact Assessments

Environmental Management

Environmental Auditing

Geographic Information Systems

