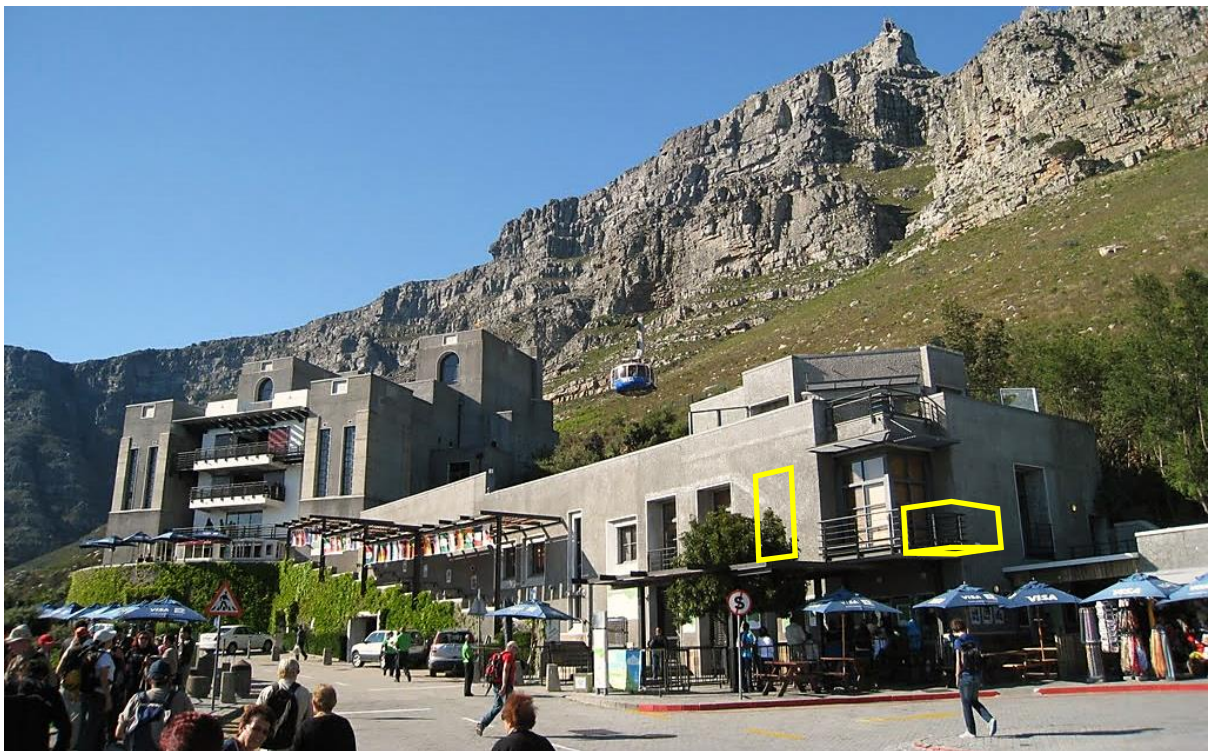


PROPOSED ALTERATIONS AND ADDITIONS TO THE ADMINISTRATION WING AT TABLE MOUNTAIN CABLEWAY LOWER STATION, ERF 3666 ORANJEZICHT – DESCRIPTION

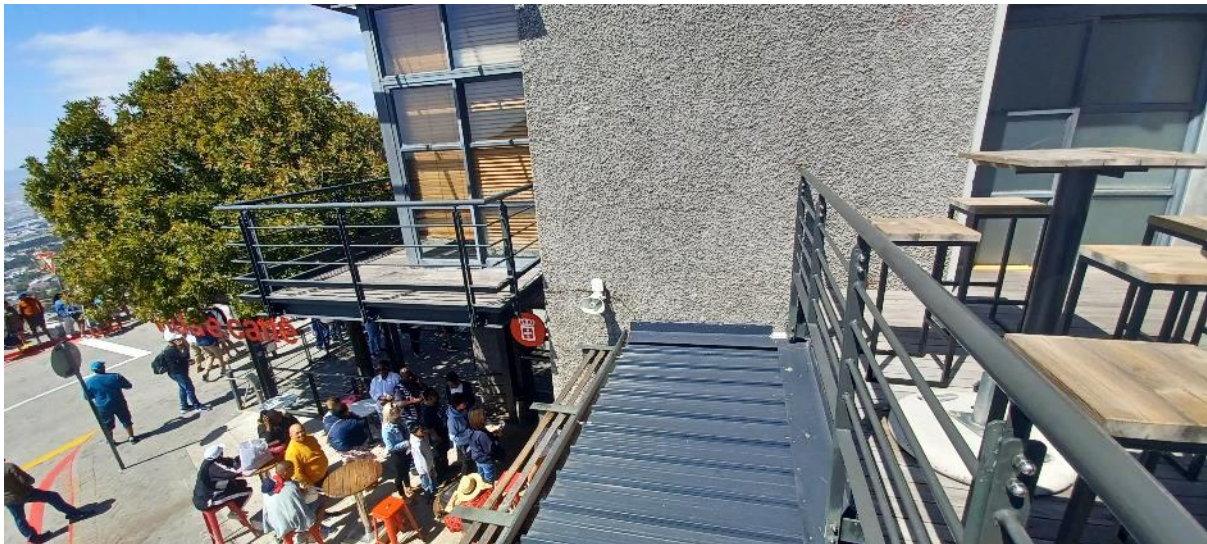
It is proposed to (a) insert an additional door, with Juliet Balcony into the existing boardroom on the First Floor of the 1997 Lower Station's Administration Wing and to (b) extend the existing balcony at the corner towards the existing drinks terrace above the kiosks.



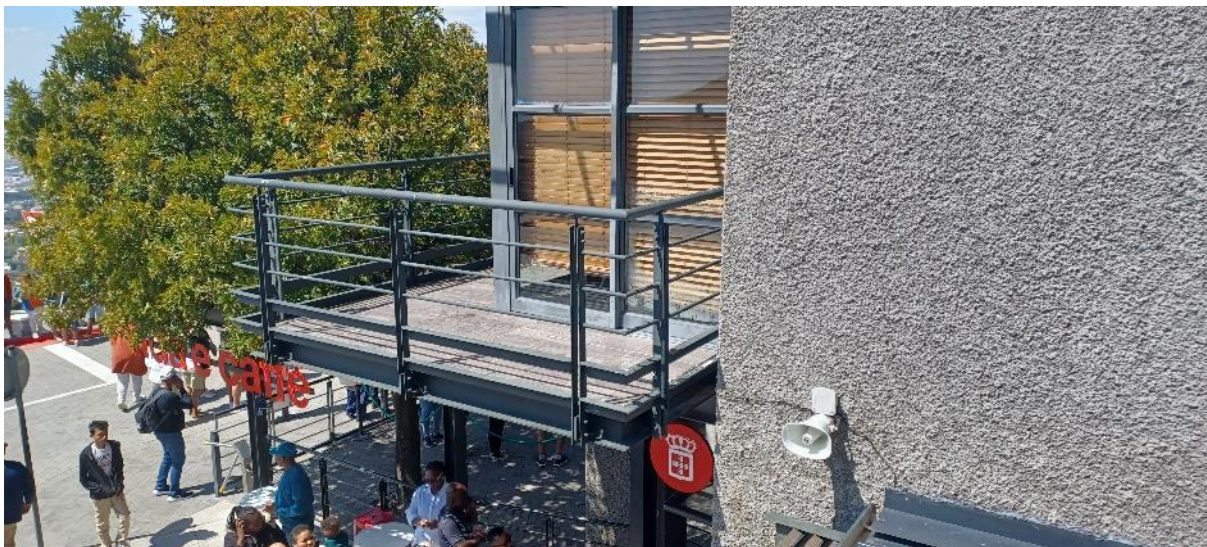
2016 oblique aerial photo of Lower Station from the north, with the location of the proposed alterations circled in yellow. (Source: Google)



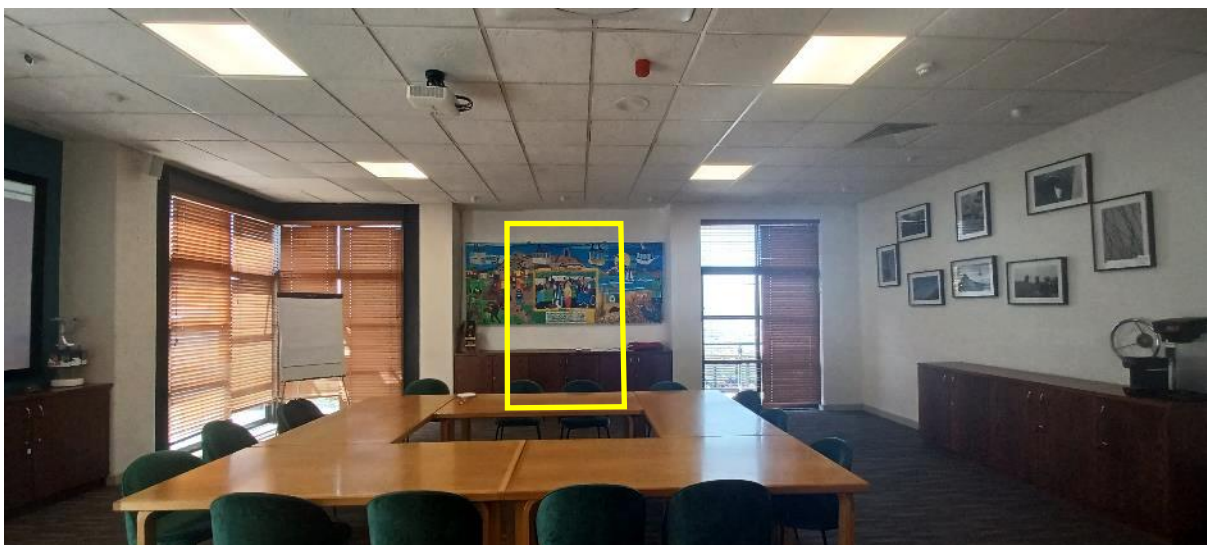
View of the Administration Wing from the north, with the proposed alterations outlined in yellow.



View of the existing corner balcony, to be extended towards the terrace on the right.



Close-up view of the existing corner window, with the sliding doors to be replaced by folding stacking doors.



The interior of the existing boardroom, with the position of the proposed new door outlined in yellow.

