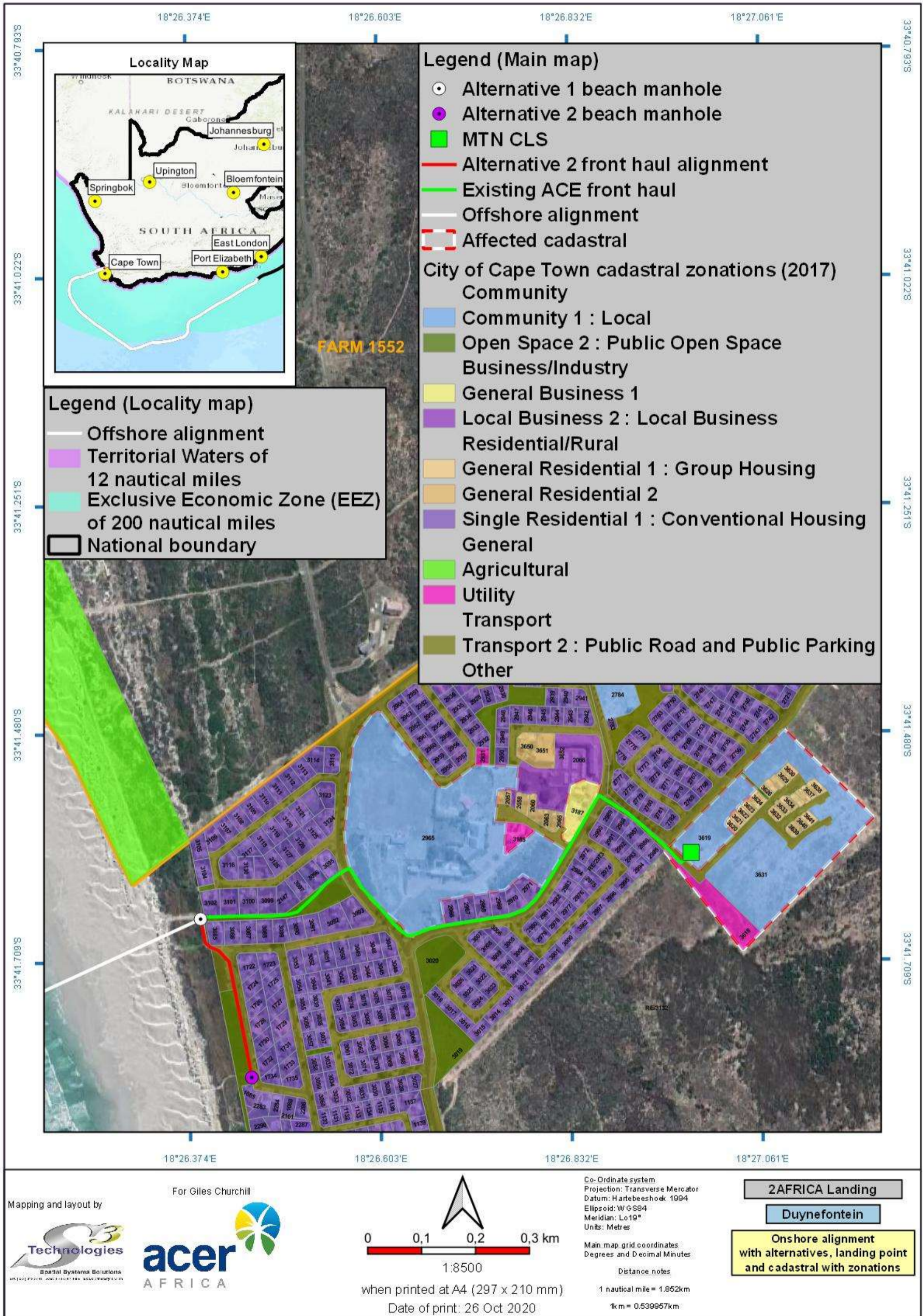


**LIST OF SGIDS / COORDINATES OF THE BOUNDARY OF THE PROPERTY OR PROPERTIES /
COORDINATES OF LISTED ACTIVITIES**

The properties affected by the development falls under the jurisdiction of the Department of Public Works: City of Cape Town. The offshore cable will be landed at a Beach Man Hole (BMH) in Duynfontein and feed into infrastructure for the existing MTN ACE cable. Property information/ details are only provided for the areas between the BMH and offshore alignment.

Property Details (Obtained from the National DEA Screening Tool).

No.	Farm Name	Farm/ Erf No.	Portion	Latitude	Longitude	Property Type
1	Melkboschstrand	2302	0	33°41'58.19S	18°26'28.49E	Erven
2	Melkboschstrand	2312	0	33°41'59.76S	18°26'28.87E	Erven
3	Melkboschstrand	1084	0	33°42'11.04S	18°26'31.03E	Public Space



Properties surrounding the proposed Equiano Cable Onshore Alignment (Note no impact on these properties will take place as the cable will be placed within the existing cable sleeves already installed from the Beach Man Hole to the Cable Landing Station)