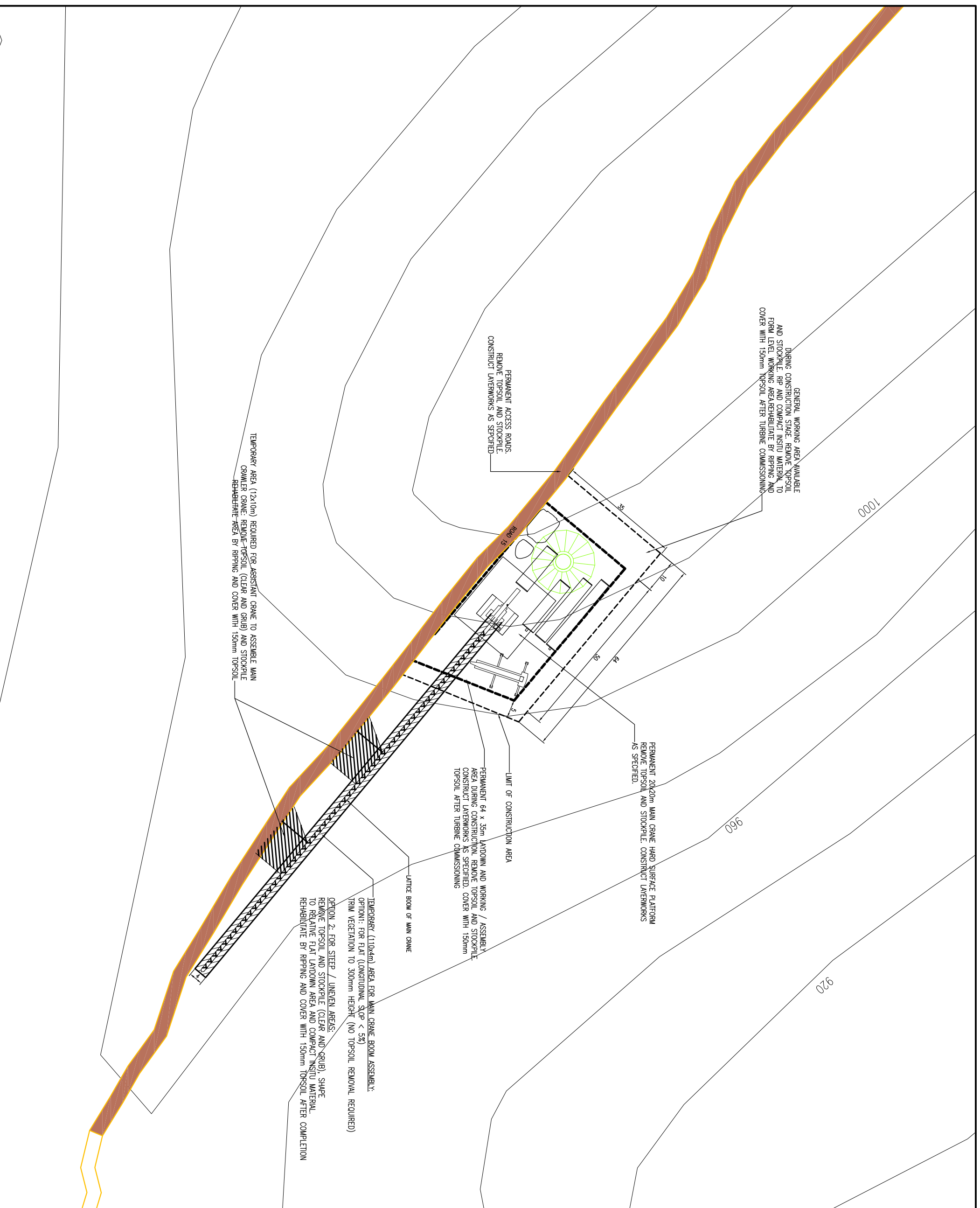


GENERAL NOTES

1. WHERE TOPSOIL NEEDS TO BE STRIPPED, SUITABLE STOCKPILE OPEN AREAS WILL HAVE TO BE IDENTIFIED BY ECO. WHERE TOPSOIL CAN BE PLACED AND MAINTAINED FOR RE-USE DURING REHABILITATION.



DRAWING NUMBER CODES

DESCRIPTION	SECTION NO.	STATUS
WATER	LS	ISSUED
WATER	LS	CONSTRUCTION
WATER	DEF	ISSUED
WATER	DEF	CONSTRUCTION
ELECTRICAL	EA	ISSUED
ELECTRICAL	EA	CONSTRUCTION
GENERAL	AS	ISSUED
GENERAL	AS	CONSTRUCTION
AS BUILT	AS BUILT	ISSUED
AS BUILT	AS BUILT	CONSTRUCTION

REVISIONS

NO.	DATE	DESCRIPTION	REV
01	13/02/2015	ISSUED	1
02	13/02/2015	ISSUED	2
03	13/02/2015	ISSUED	3
04	13/02/2015	ISSUED	4
05	13/02/2015	ISSUED	5
06	13/02/2015	ISSUED	6
07	13/02/2015	ISSUED	7
08	13/02/2015	ISSUED	8
09	13/02/2015	ISSUED	9
10	13/02/2015	ISSUED	10

PROJECT INFORMATION

PROJECT NAME: ROODEPLAT WIND FARM EASTERN CAPE

CLIENT: Inyanda Energy Projects (PTY) LTD

CONSULTANT: AFRICA EAST CONSULTING ENGINEERS

DATE: 13/02/2015

SCALE: 1:500

DRAWING NUMBER: R1011-PA-DET-03

PROJECT NO. / SHEET NO. / SHEET TOTAL: R1011-PA-DET-03 / PRE-00 / PRE-00