

R103 PHOTOGRAPHIC RECORD

Photographs taken 26 April 2021

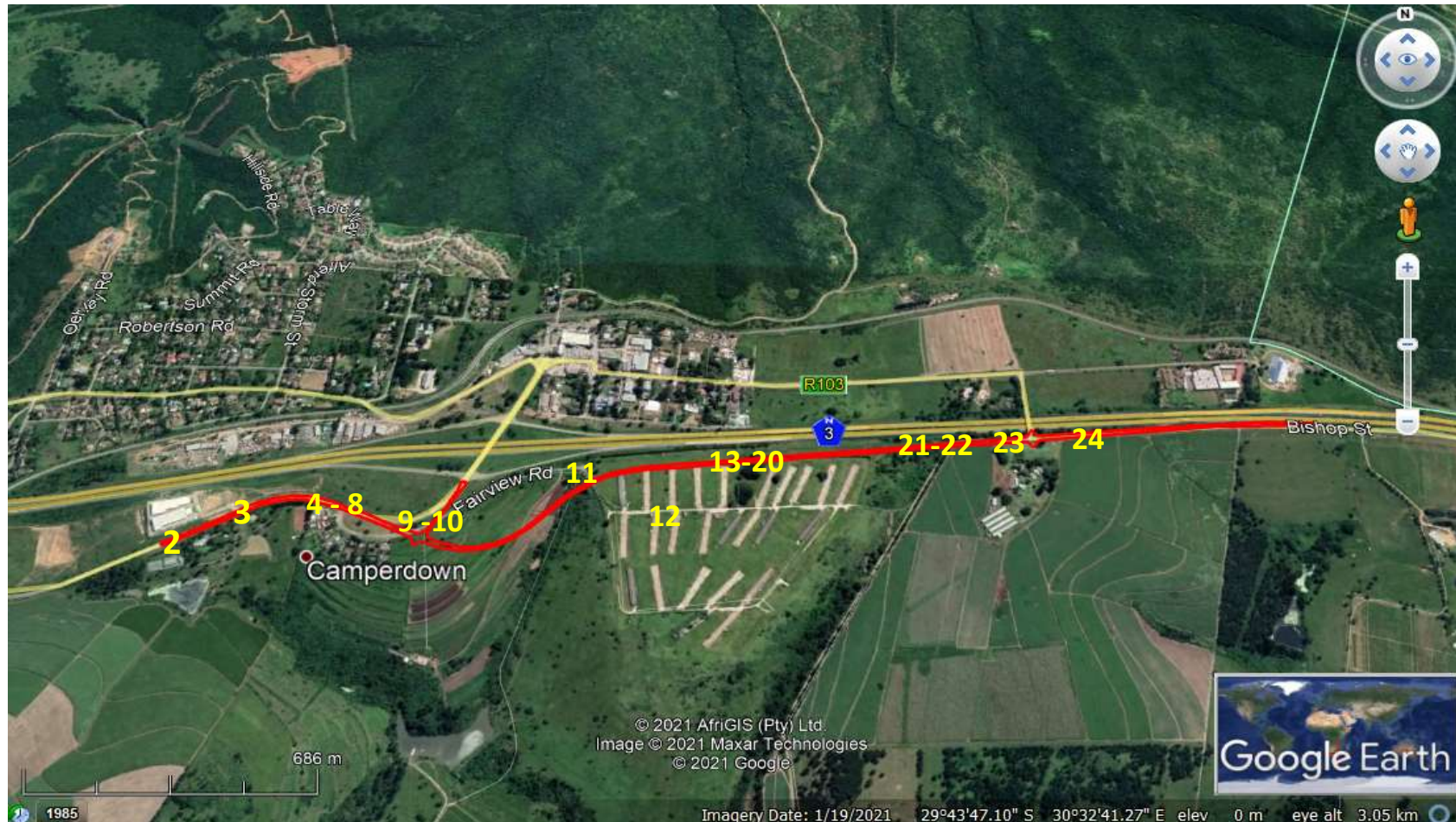


Figure 1: Aerial image showing proposed R103 project in context and showing locations from which photos were taken



Figure 2: View south towards one of the properties along the western end of the R103



Figure 3: View west along the R103 with Mustapha Business Park in the background on the right of the photograph



Figure 4: Views north showing the R103 at the intersection with Fairview Road



Figure 5: View towards the north west showing the R103 at the intersection with Fairview Road



Figure 6: View east towards groups of properties along Fairview Road



Figure 7: View south east along Fairview Road showing some of the properties in the area



Figure 8: View towards the north at the open piece of land close to the group of houses along Fairview Road



Figure 9: View towards the south showing the area along which part of the greenfield section of the R103 will run



Figure 10: Additional view towards the south showing the area along which part of the greenfields section of the R103 will run



Figure 11: Views towards the north east along Fairview Road showing the portion of the greenfields section of the R103 at the western boundary of the old Rainbow Chicken Farm (see yellow arrow)



Figure 12: View towards the west showing the proposed location of the R103 in the background among fields (yellow arrow). Photo taken from the old main road within the old Rainbow Chicken Farm



Figure 13: View towards the east showing the proposed R103 location running north of the old Rainbow Chicken Farm



Figure 14: View towards the east showing the reservoir of the old Rainbow Chicken Farm on the left of the image. Part of the proposed R103 is on the right of the image with the N3 offramp (yellow arrow) and the N3 (red arrow) in the background



Figure 15 View towards the north east showing the new R103 route with the reservoir of the old Rainbow Chicken Farm on the right



Figure 16: Views towards the east along the proposed R103 with possibly the office of the old Rainbow Chicken Farm in the background on the left



Figure 17: Views towards the west showing Some of the infrastructure along the proposed R103's servitude



Figure 18: Additional views towards the north showing some of the infrastructure along the proposed R103's servitude



Figure 19: Additional infrastructure along the proposed R103's servitude



Figure 20: Views from the proposed R103 towards Fairview Road (green arrow) the N3 offramp (yellow arrow) and the N3 (red arrow) in the background



Figure 21: Views towards the west towards part of the proposed greenfield section of the R103 with the old Rainbow Chicken Farm in the background on the left and some of the infrastructure along the proposed road's servitude



Figure 22: Views towards the east showing the gravel section of the R103



Figure 23: View towards the north east showing some of the signage along the gravel section of the R103 before the Camperdown N3 overpass



Figure 24: Views west towards the R103 undergoing routine maintenance