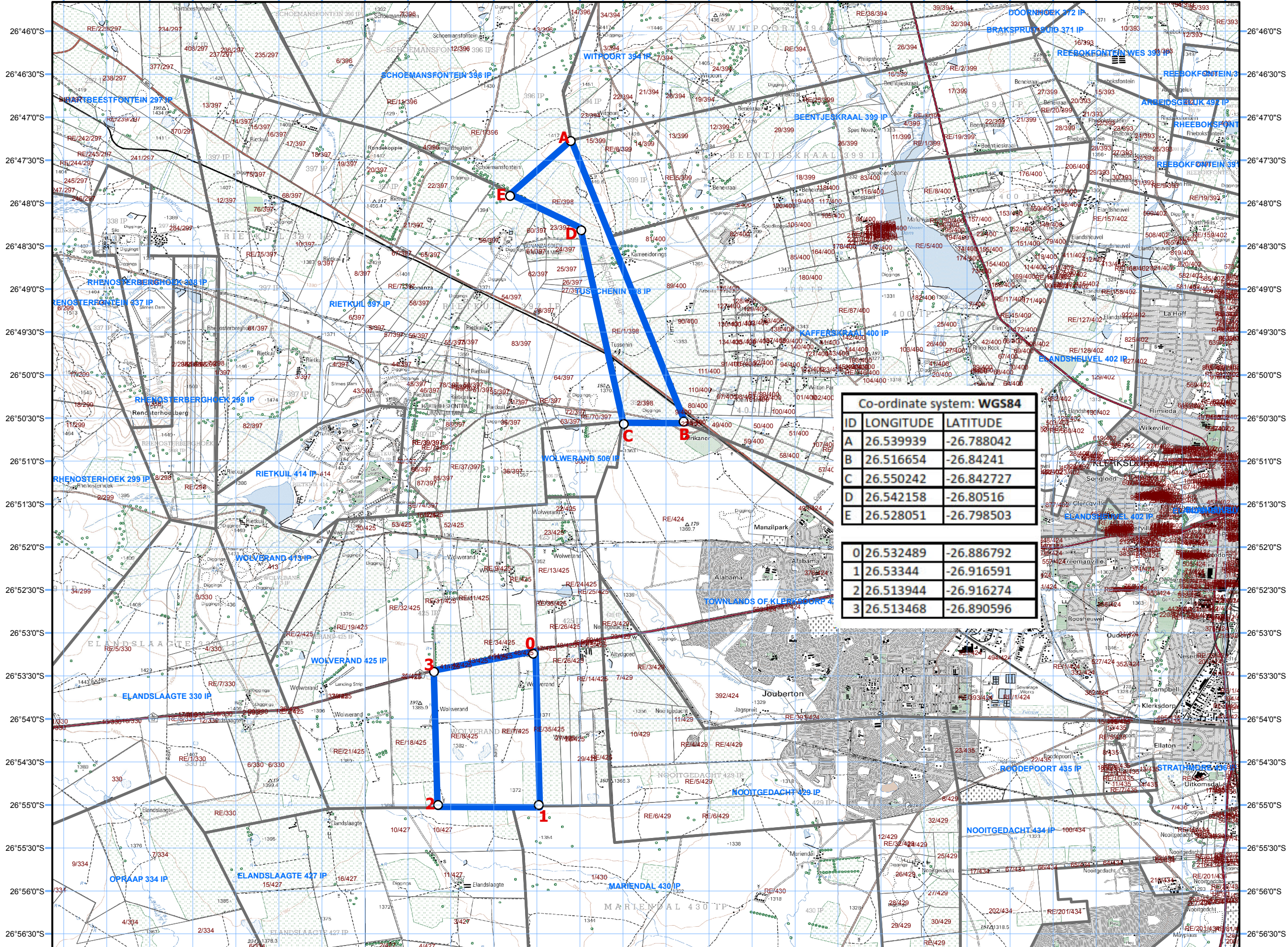


REGULATION 2(2) PLAN

26°26'30"E 26°27'0"E 26°27'30"E 26°28'0"E 26°28'30"E 26°29'0"E 26°29'30"E 26°30'0"E 26°30'30"E 26°31'0"E 26°31'30"E 26°32'0"E 26°32'30"E 26°33'0"E 26°33'30"E 26°34'0"E 26°34'30"E 26°35'0"E 26°35'30"E 26°36'0"E 26°36'30"E 26°37'0"E 26°37'30"E 26°38'0"E 26°38'30"E 26°39'0"E 26°39'30"E 26°40'0"E



Co-ordinate system: WGS84

ID	LONGITUDE	LATITUDE
A	26.539939	-26.788042
B	26.516654	-26.84241
C	26.550242	-26.842727
D	26.542158	-26.80516
E	26.528051	-26.798503

0	26.532489	-26.886792
1	26.53344	-26.916591
2	26.513944	-26.916274
3	26.513468	-26.890596

Sandenezwe Mining (Pty) Ltd

APPLICATION FOR A PROSPECTING RIGHT OF GOLD ORE OF THE FARM TUSCHENIN 398 IP AND PORTIONS 7 AND 8 OF THE FARM WOLVERAND 425 IP WITHIN THE MATLOSANA MAGISTERIAL DISTRICT, NORTH WEST PROVINCE.

PLAN COMPILED IN ACCORDANCE WITH REGULATION 2(2) OF THE MPRDA, 2002, (ACT NO 28 OF 2002)

TOTAL AREA EXTENT OF APPROXIMATELY 1132 HECTARES

APPLICANT: Sandenezwe Mining (Pty) Ltd

SIGNATURE:

DATE: 28 March 2019

LEGEND

FARM BOUNDARIES

APPLICATION AREA

ROADS

1:80 357

26°26'30"E 26°27'0"E 26°27'30"E 26°28'0"E 26°28'30"E 26°29'0"E 26°29'30"E 26°30'0"E 26°30'30"E 26°31'0"E 26°31'30"E 26°32'0"E 26°32'30"E 26°33'0"E 26°33'30"E 26°34'0"E 26°34'30"E 26°35'0"E 26°35'30"E 26°36'0"E 26°36'30"E 26°37'0"E 26°37'30"E 26°38'0"E 26°38'30"E 26°39'0"E 26°39'30"E 26°40'0"E

