

ROBBEN ISLAND MAXIMUM SECURITY PRISON 'A' SECTION: PHOTOGRAPHIC SURVEY 2001.

METHODOLOGY

Images have been reproduced in this document to enable easy access.

The survey was commissioned by Robben Island Museum to enable the upgrading of the 'Cell Stories' exhibition in A Section of the MSP.

The original photographs were taken in colour film by Groenewal Preller Architects and are housed at RIM.

The original photographs were photographed as a cost effective way to digitise the images.

The prints were not separated but left pasted onto their respective reference data sheets with the original notations by the photographer.

Certain photographs marked as: 'C' or 'B' section have relevance as they are intricately connected to 'A' section and/or share walls or spaces.

Where discrepancies occur it is best to consult the original prints held by RIM.

The digital images are high resolution 4288 x 3216 with a 72 DPI.

Images were taken with a Fujifilm Finepix S2960 digital camera.

The floor plan is reproduced at the end of this document

Copyright remains with RIM and the photographer in terms of section 27[23] of the National Heritage Resources Act, 25 of 1999.

REFERENCES

Heritage Office of the NSW Department of Planning: *Photographic Recording of Heritage Items using Film or Digital Capture*. 2006.

Architectural drawings and photographs courtesy Groenewald Preller Architects

SECTION A
A6/16 WINDOWS TO REPLACE.



A6/20 RECR. BLOCK - W. YARD.



SECTION A
A6/16 WINDOWS TO REPLACE.



A6/20 RECR. BLOCK - W. YARD.



SECTION A
AG/07 W. ELEV. CELL BLOCK.



AG/17 W. ELEV. RECR. BLOCK.

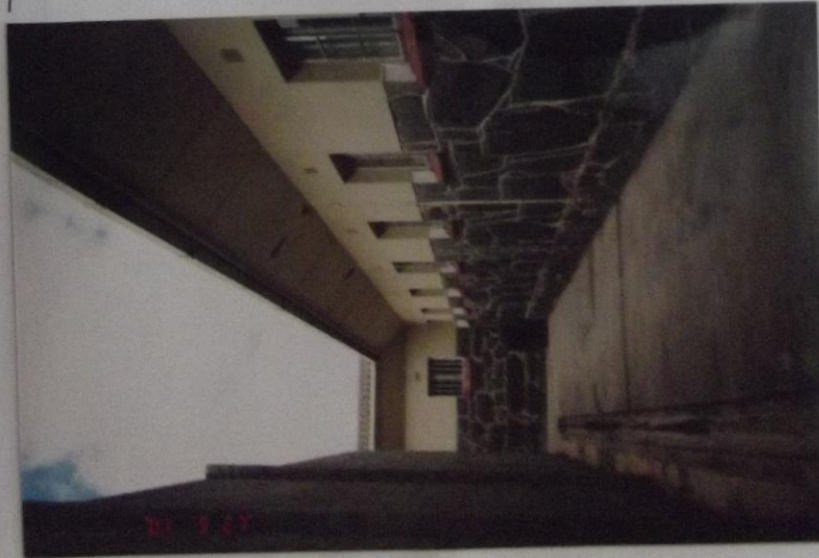


SECTION A

A5/11
LOOKING
EAST IN
N YARD/
ALLEY.

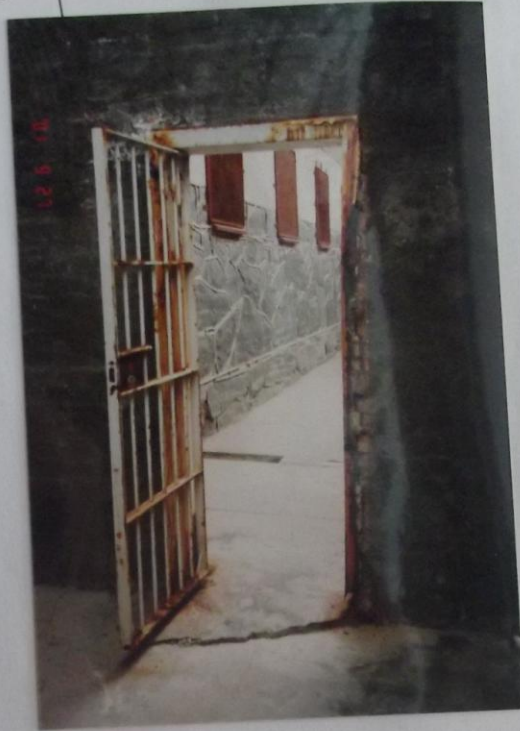


A5/13
LOOKING S IN
W. YARD.

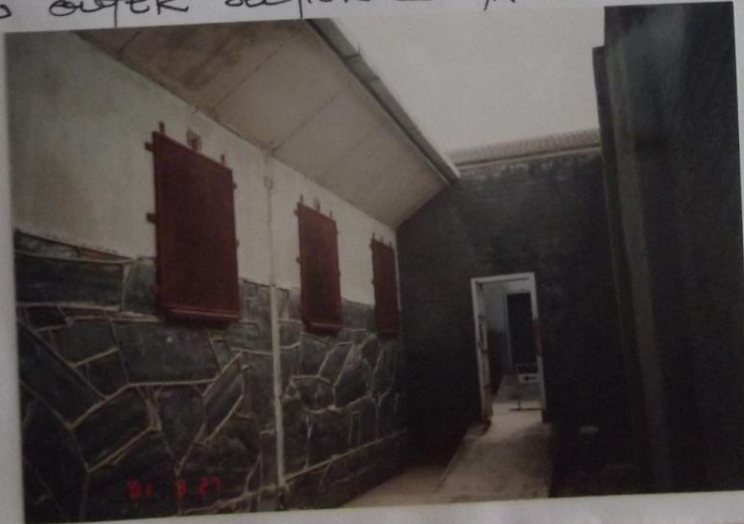


SECTION A

AS/14
GATE TO
SECTION C
YARD.



AS/16
LOOKING NORTH
TO OUTER SECTION C
YARD.



SECTION A
A5/05 "TENNIS COURT" & S + E
YARD WALLS.



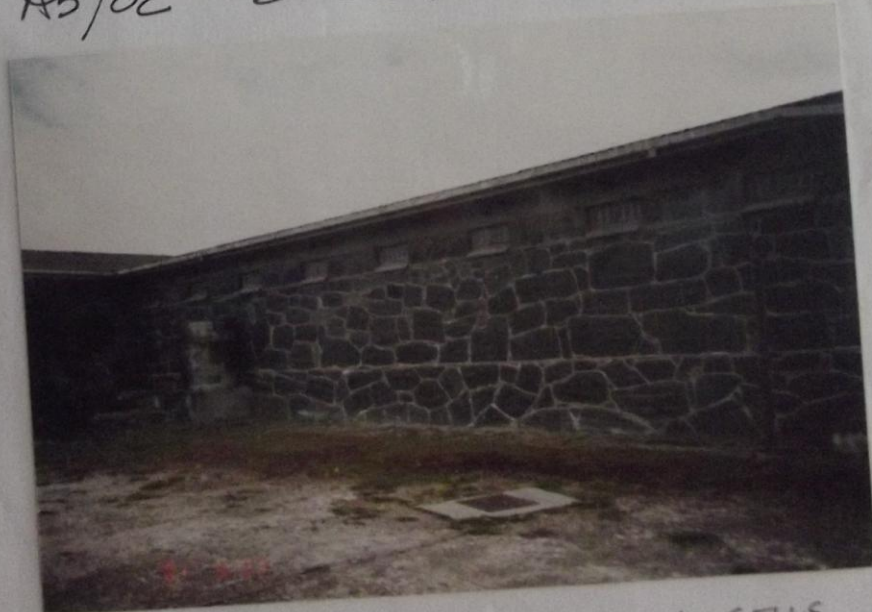
A5/07 RECR. ROOMS TOTALLY
RUSTED CELL TYPE WINDOW.



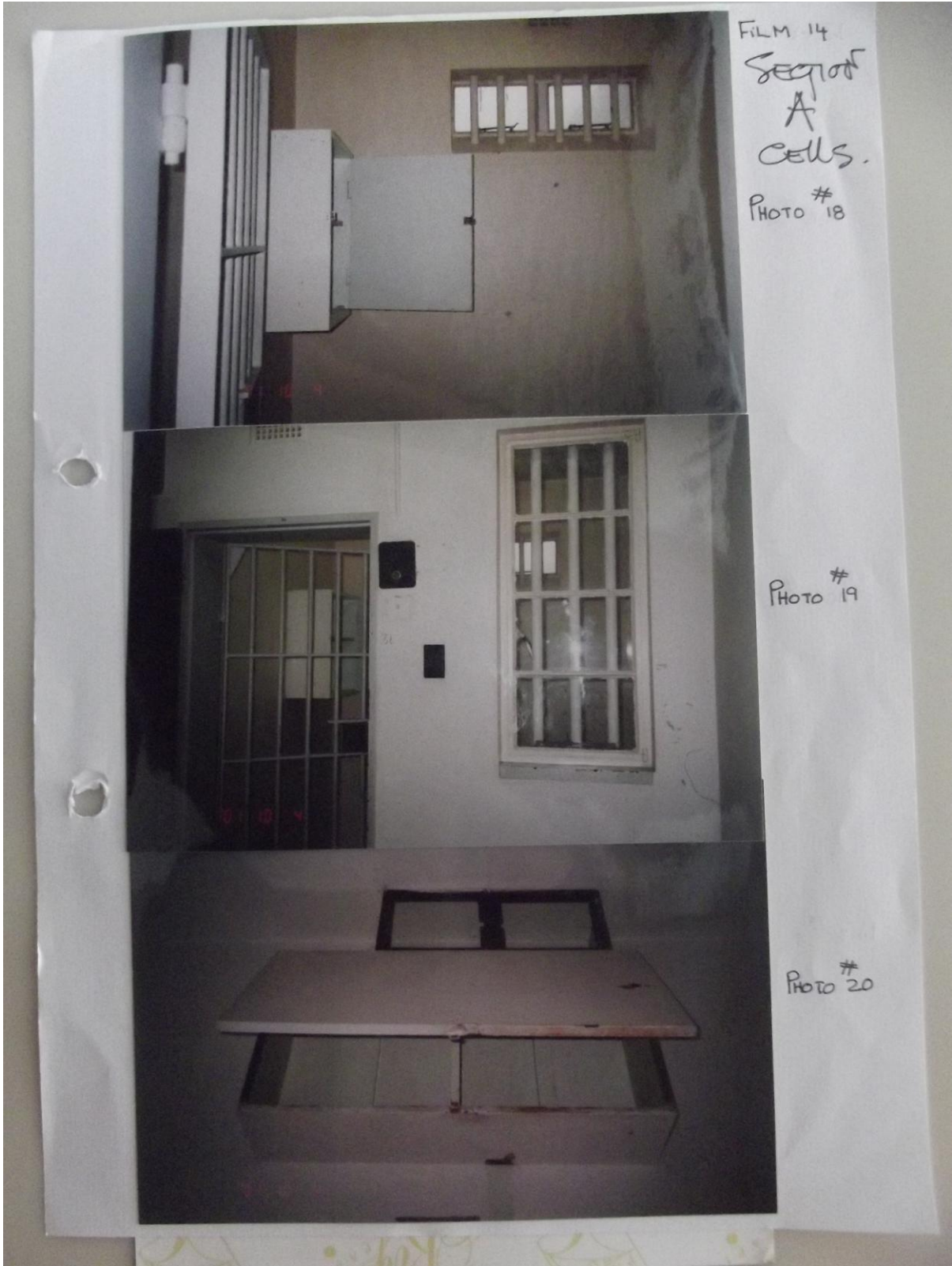
SECTION A.
A5/00 E. ELEV - YOUTH RECR.



A5/02 S. ELEV. CELL BLOCK.



SECTION A CELLS
MAX. SECURITY PRISON



FILM 14
Section
A
cells.
PHOTO #18

PHOTO #19

PHOTO #20

FILM 14

PHOTO # 21

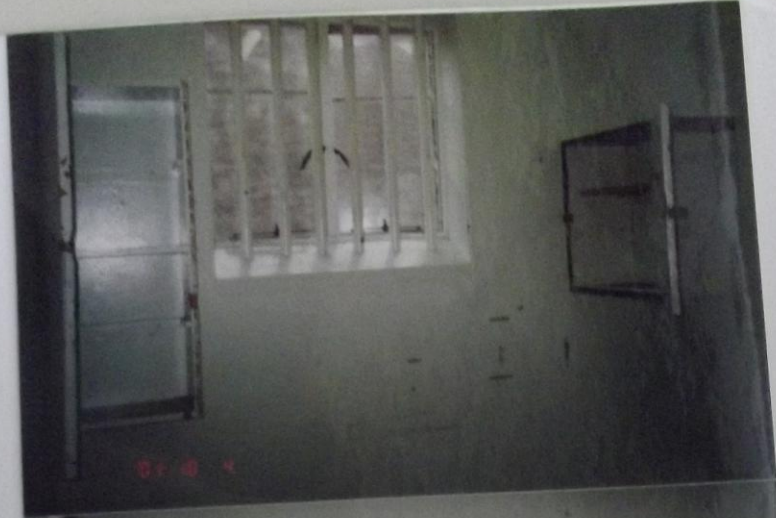


PHOTO # 22

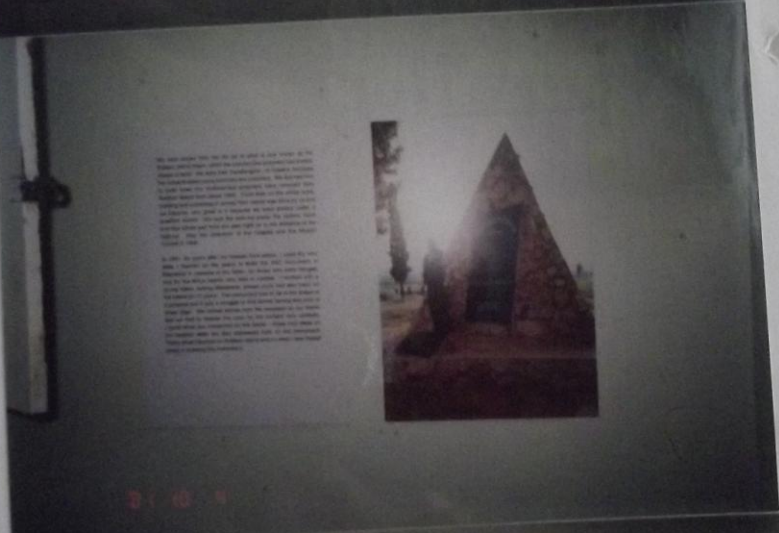
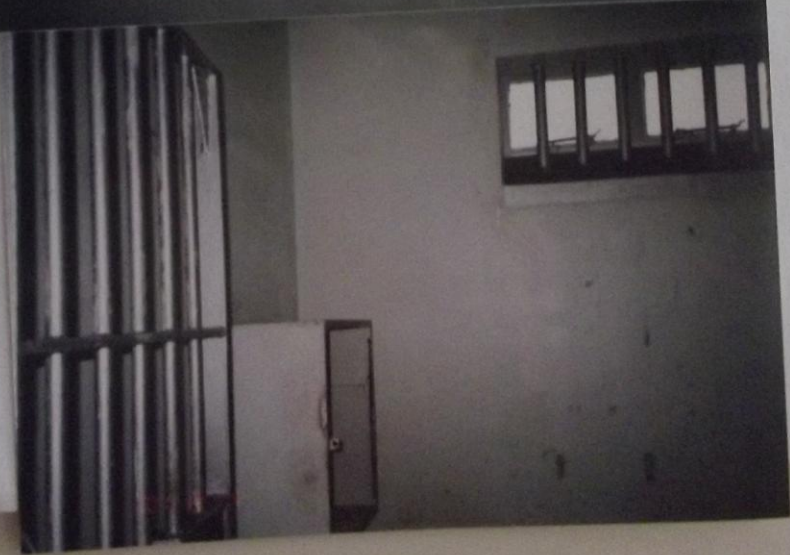


PHOTO # 23



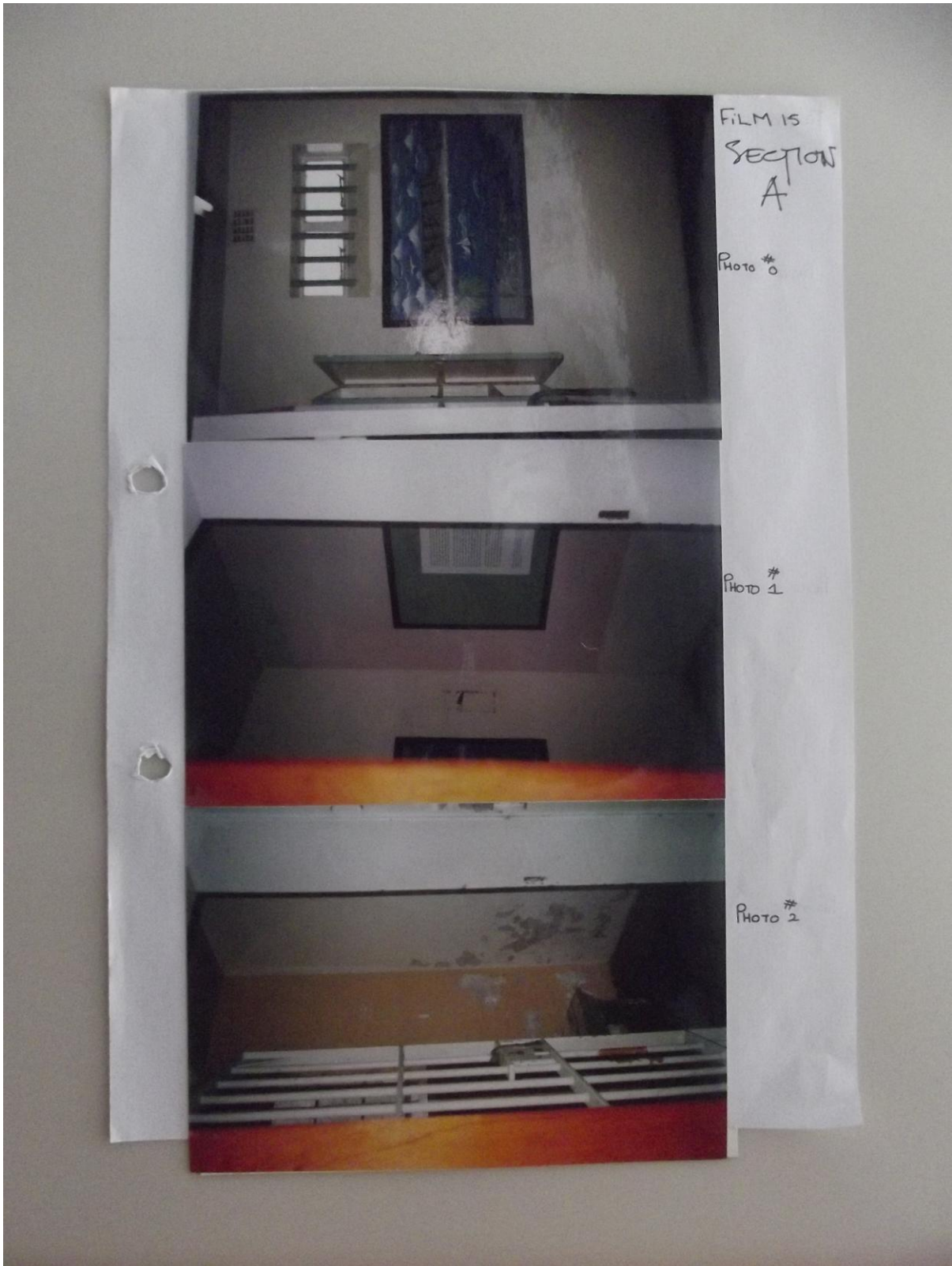
FILM 14



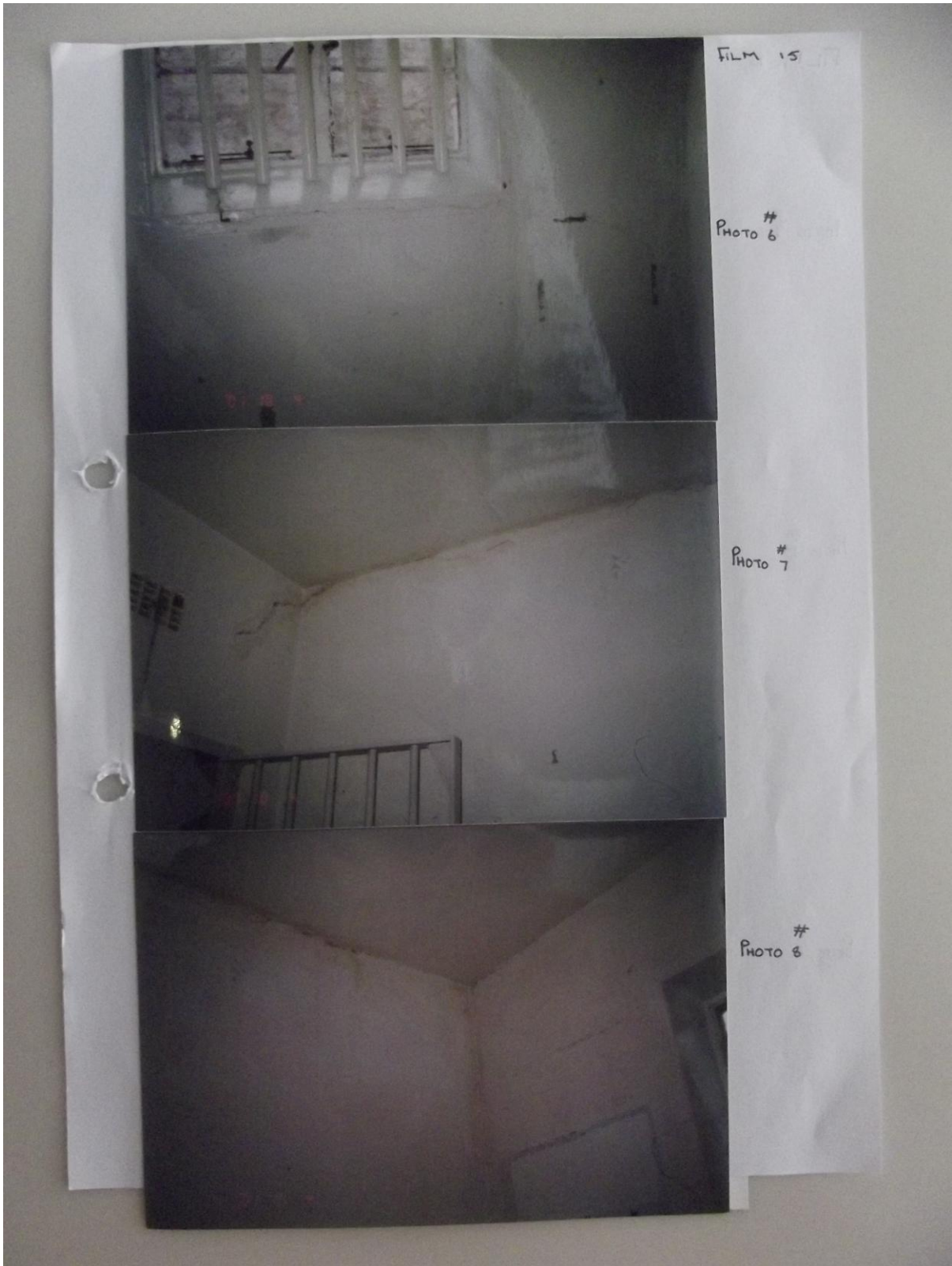
PHOTO #24



PHOTO #25











FILM 15

Photo # 15



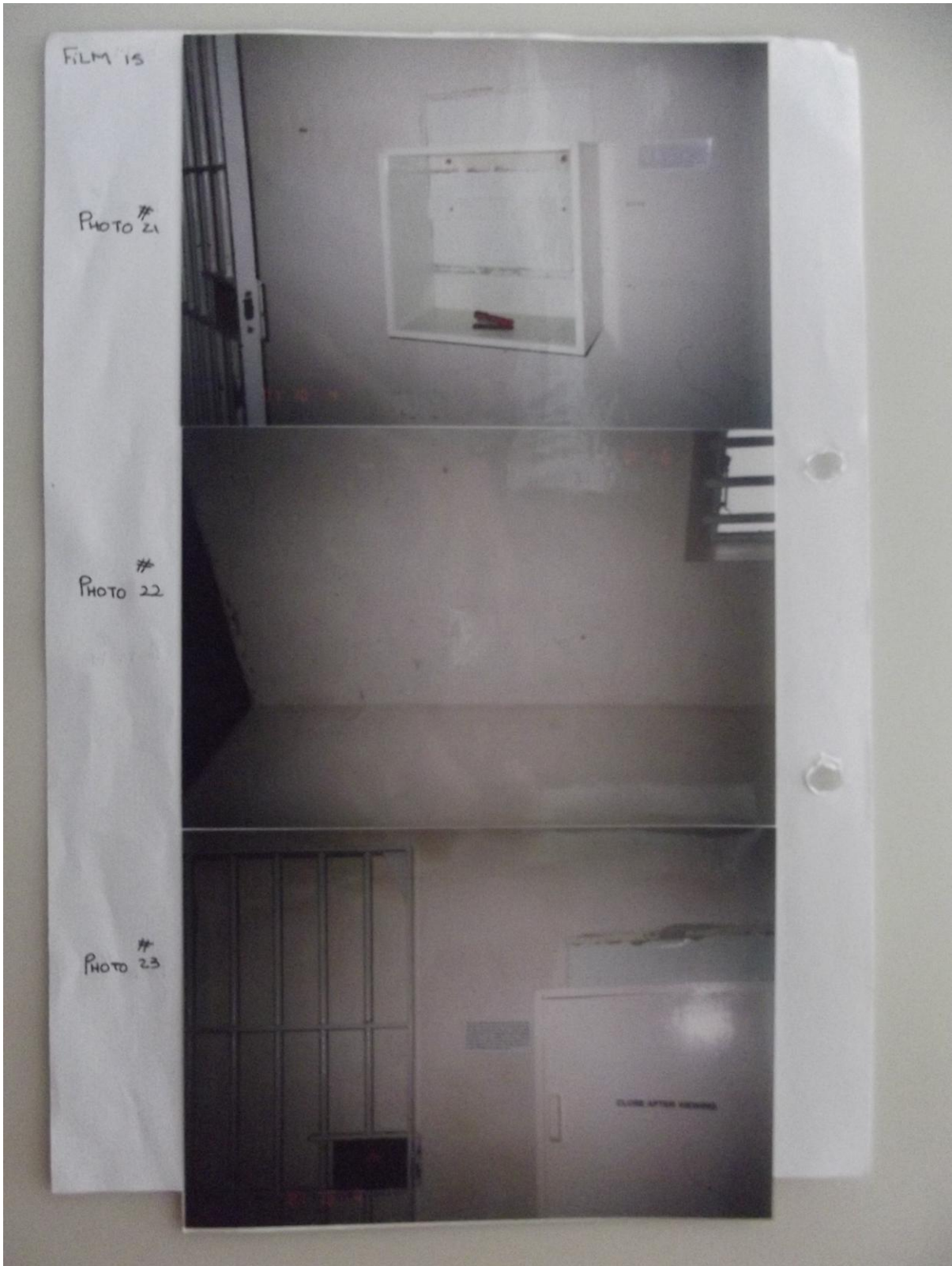
Photo # 16

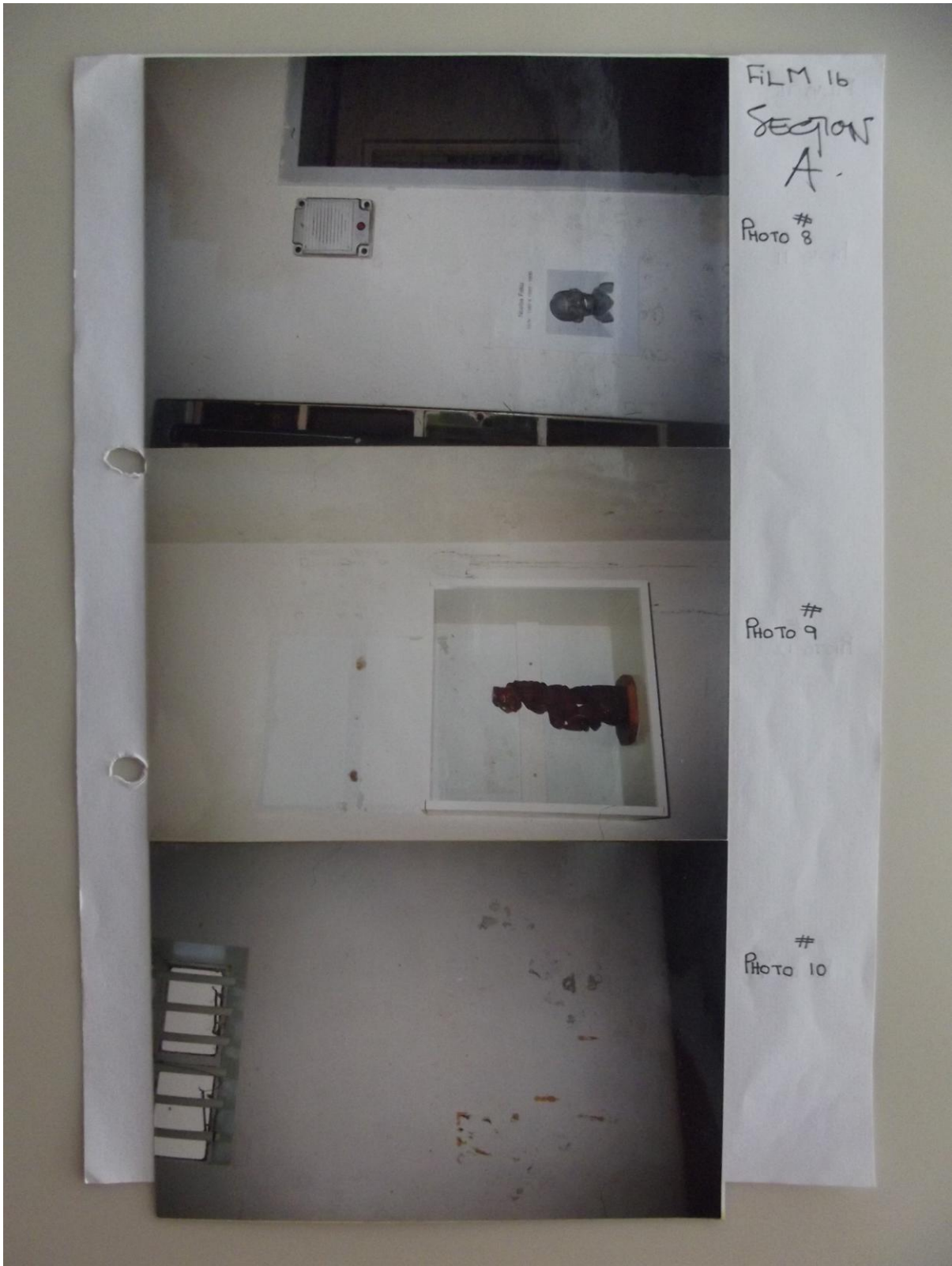


Photo # 17









FILM 16
SECTION
A.

PHOTO 8

PHOTO 9

PHOTO 10

FILM 16

PHOTO #
11

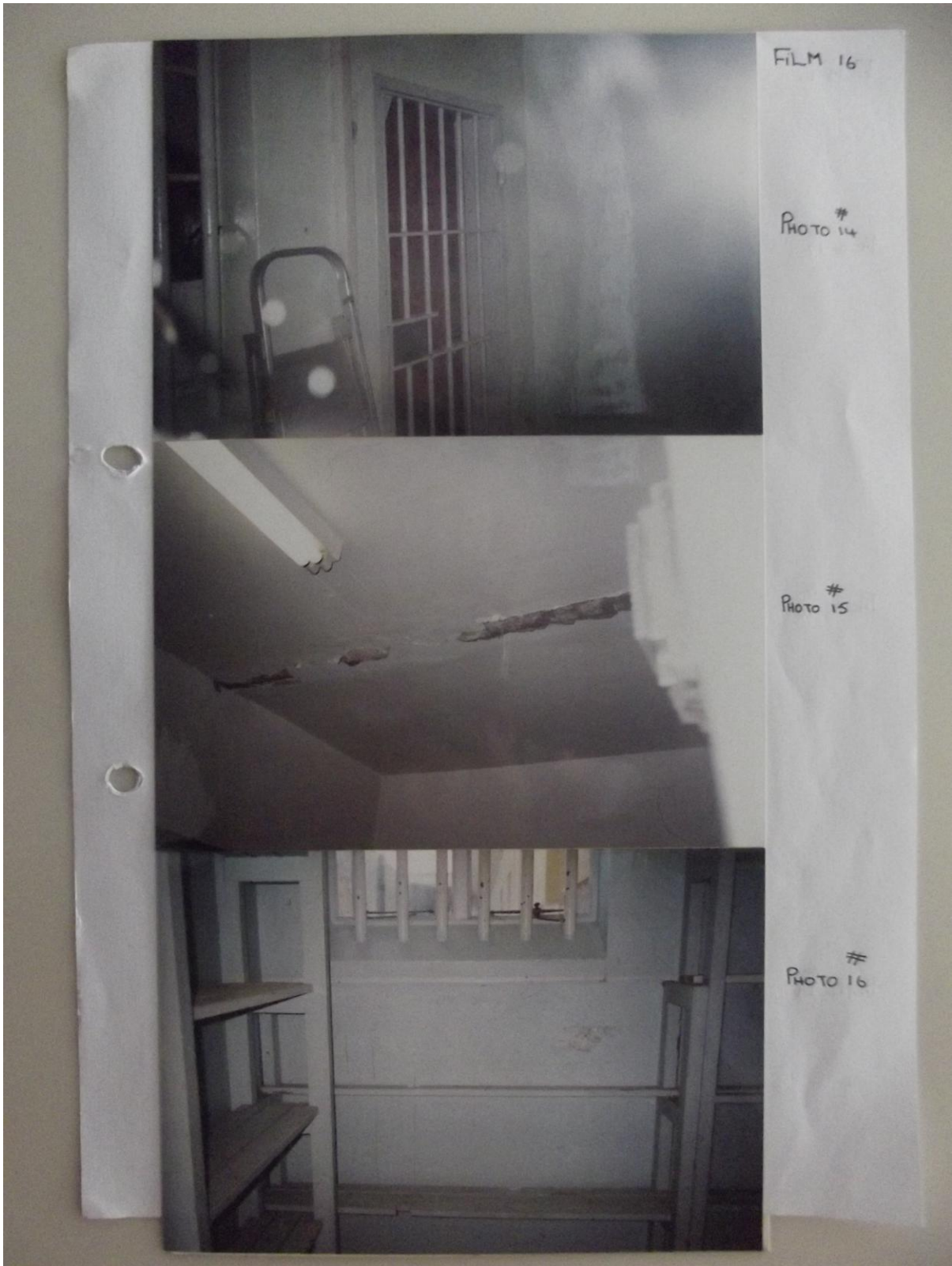


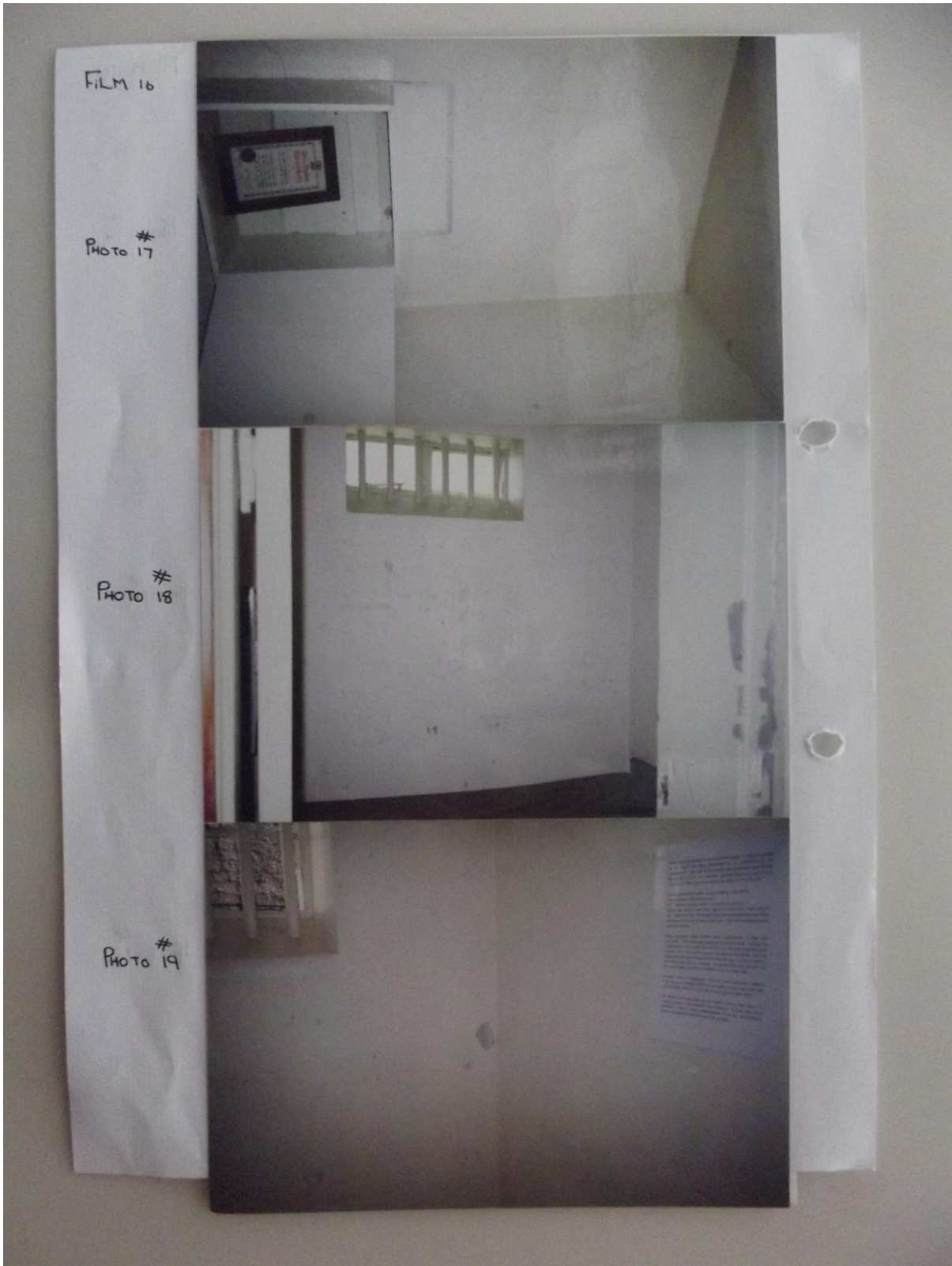
PHOTO 12



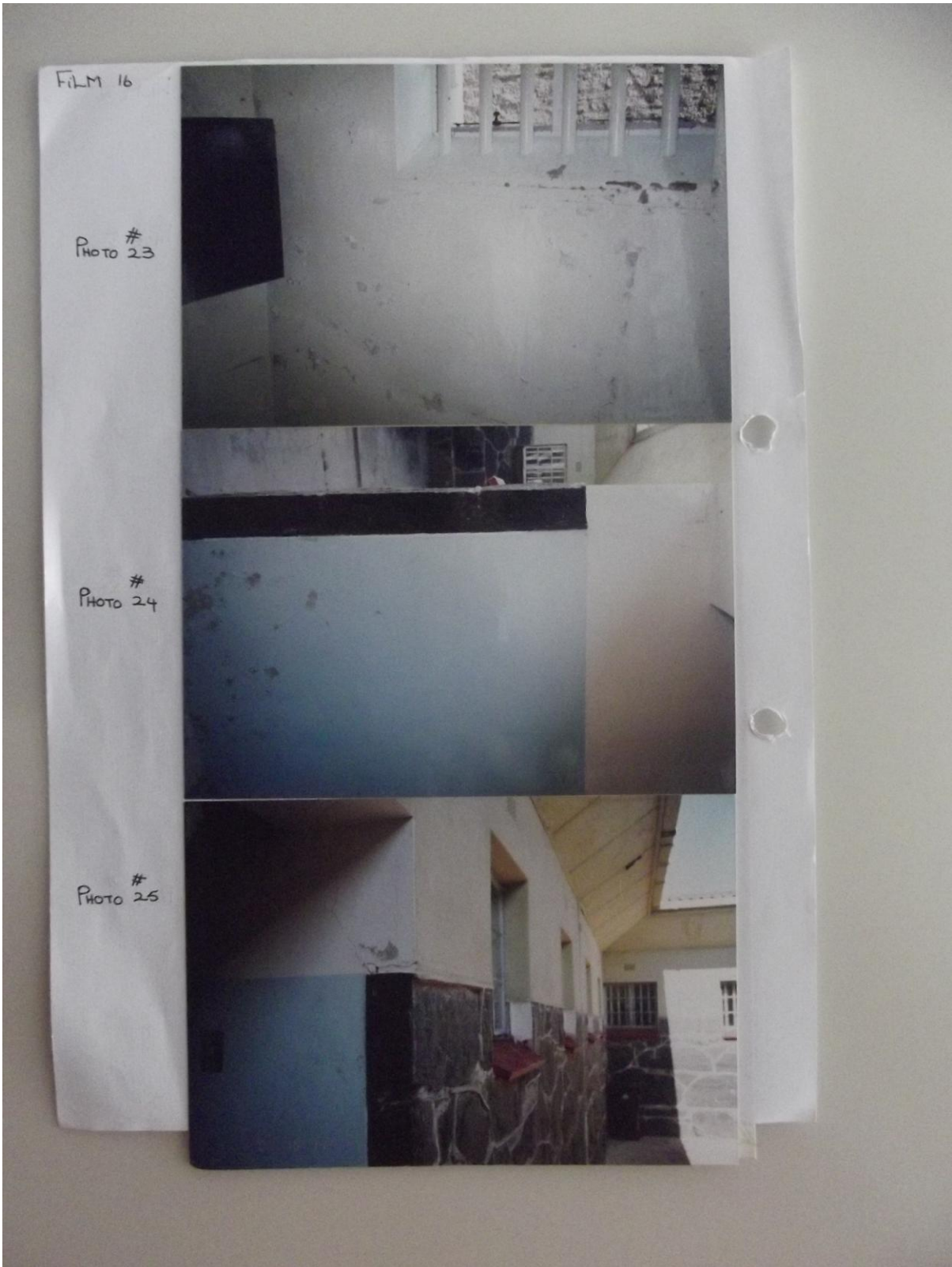
PHOTO #
13





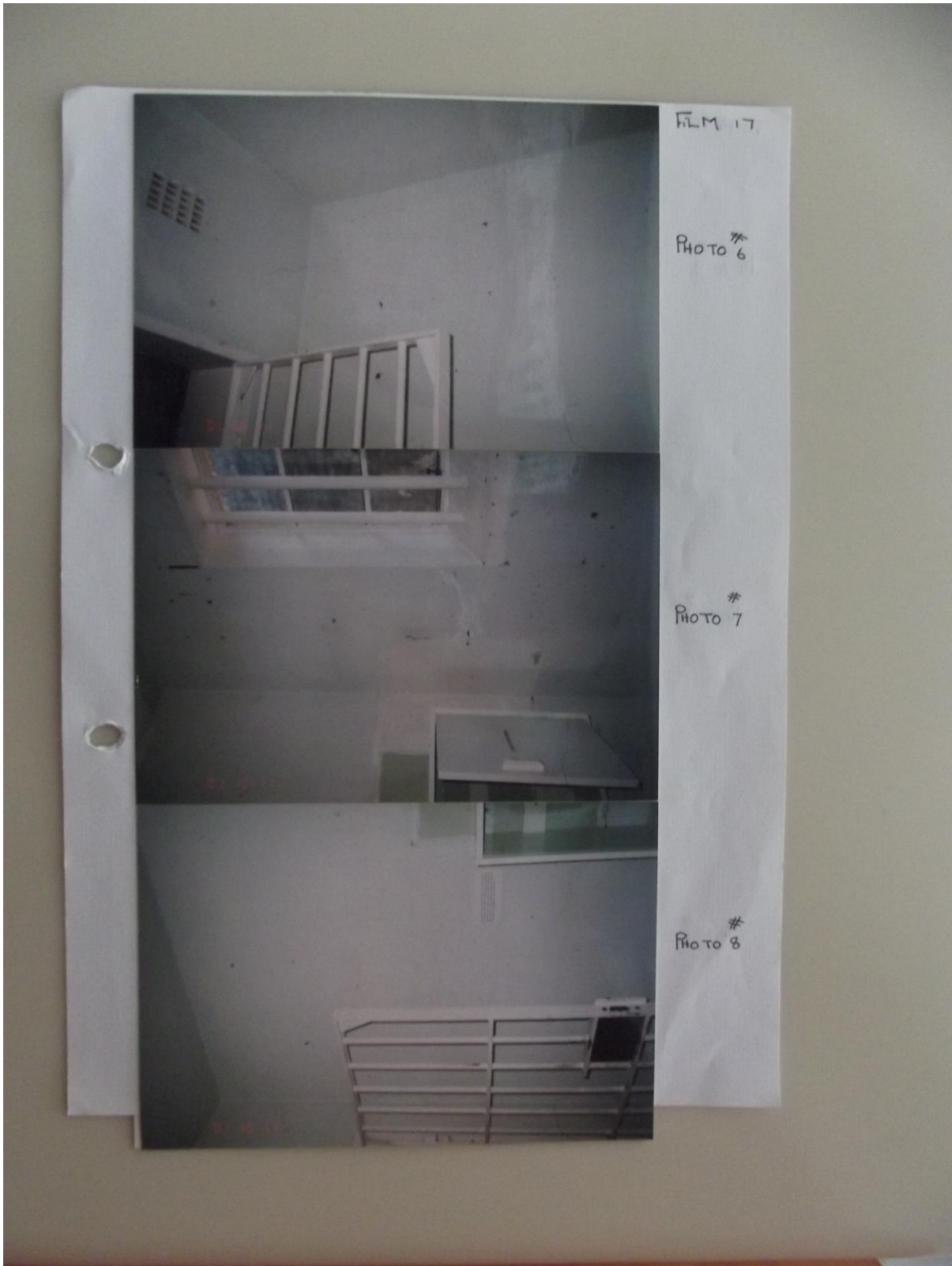




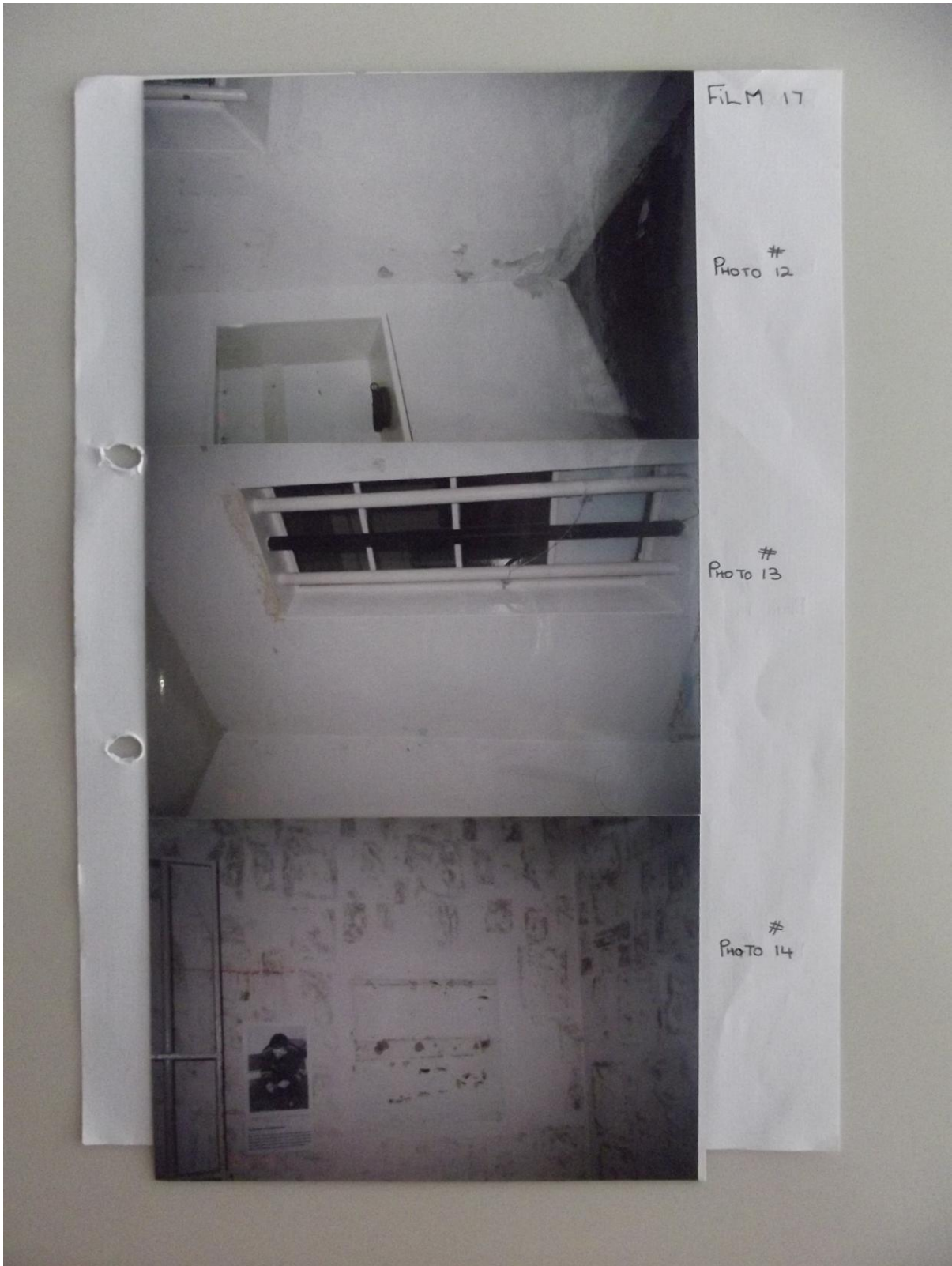




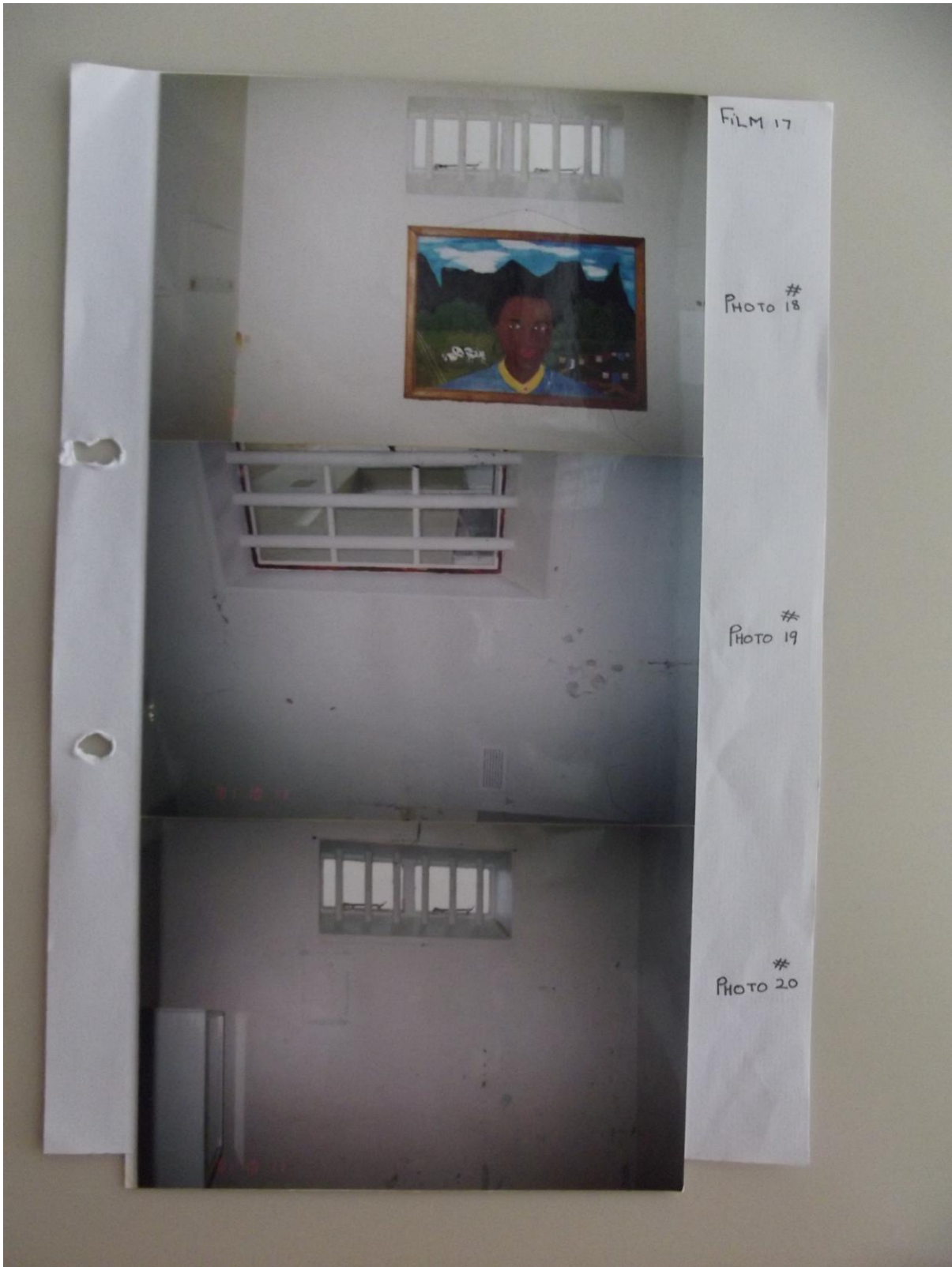


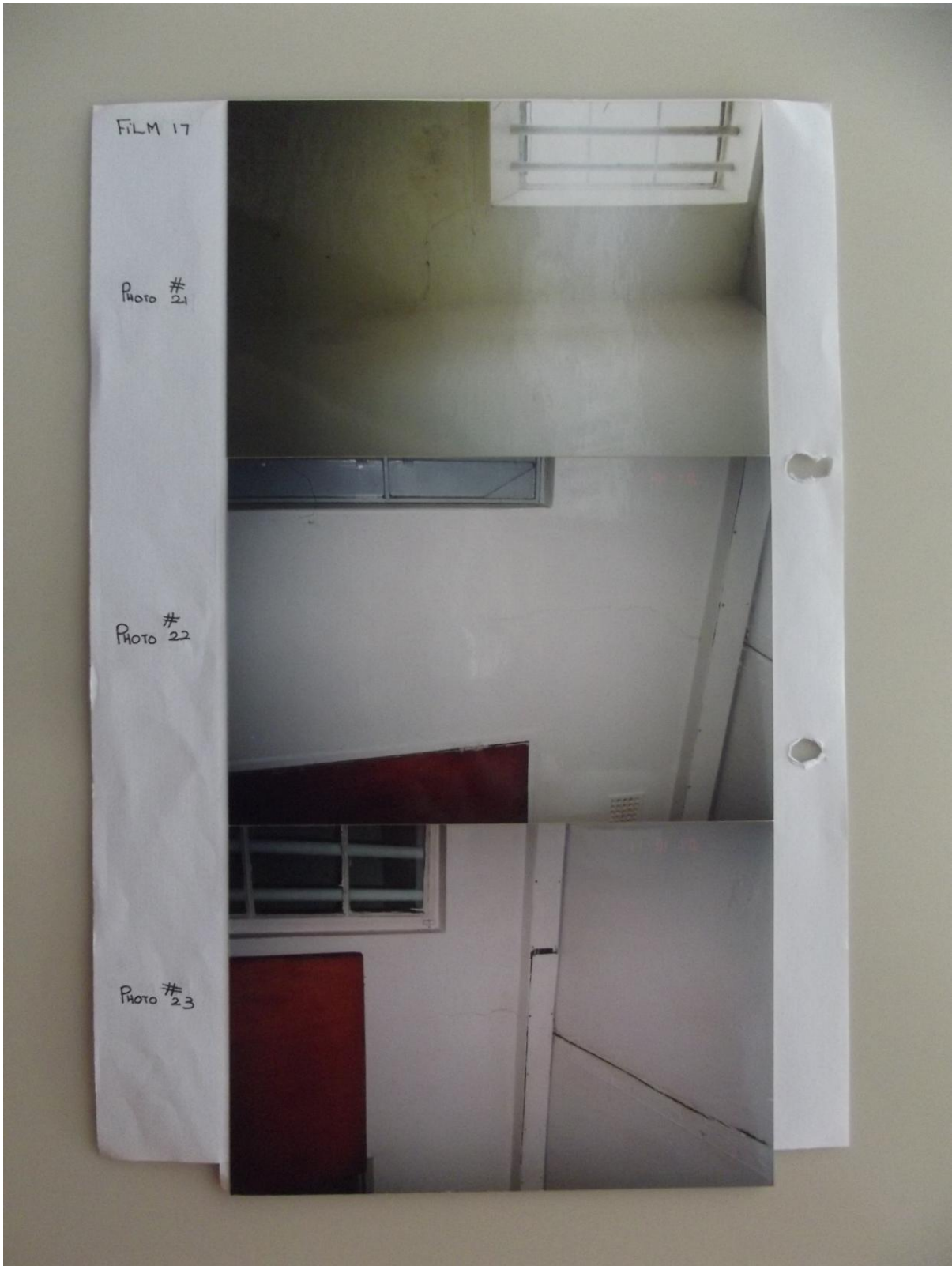












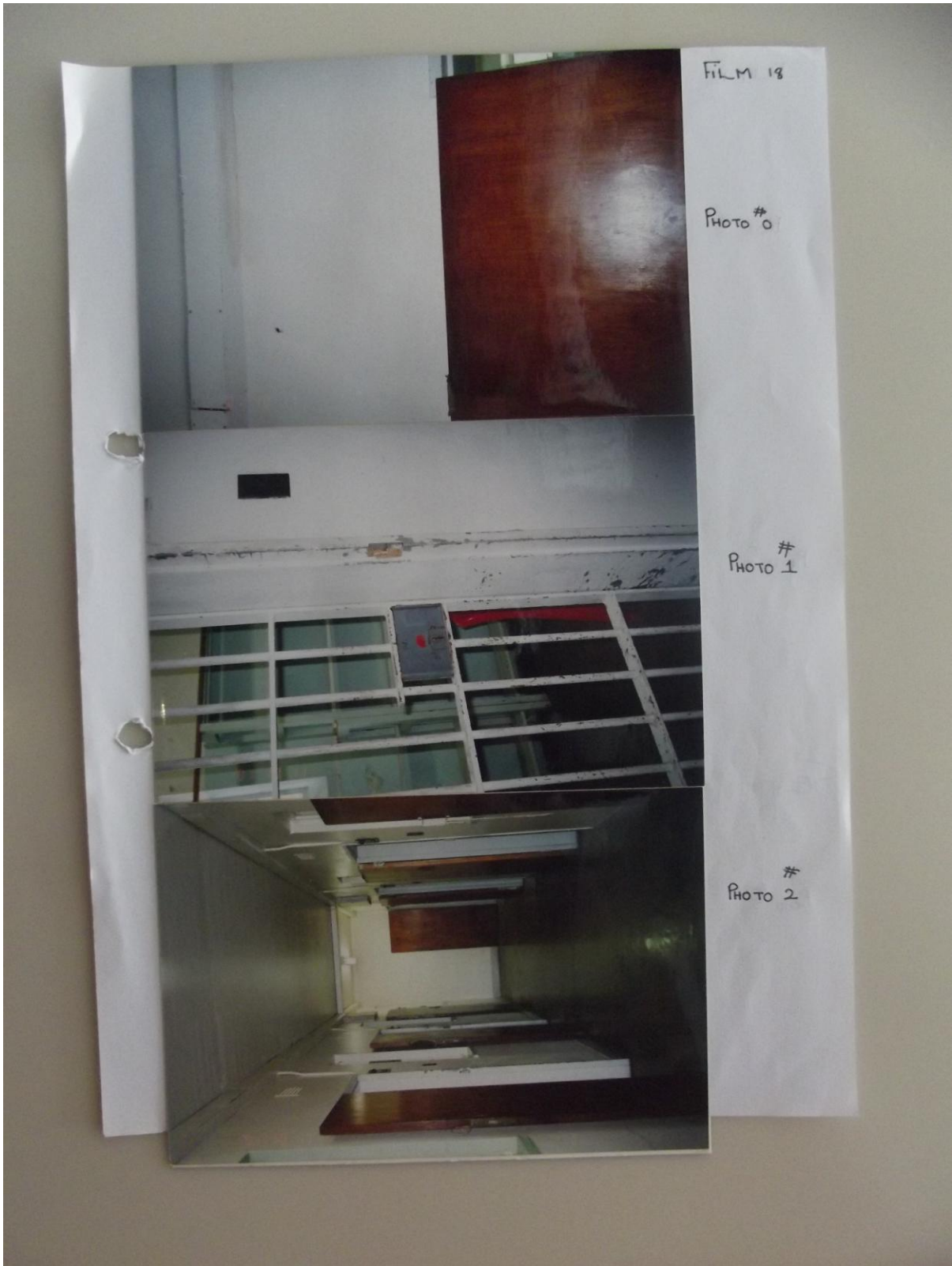
FILM 17

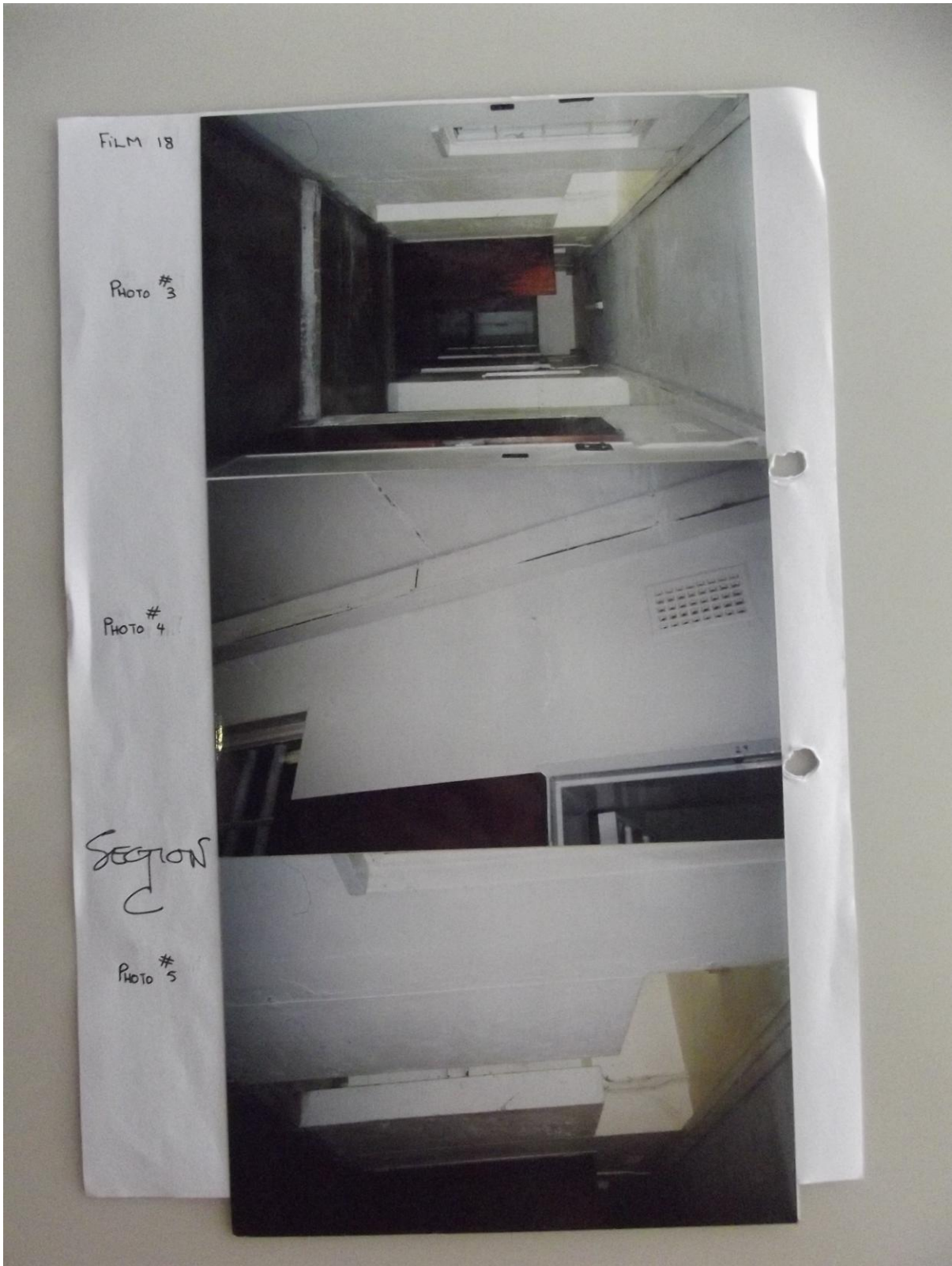


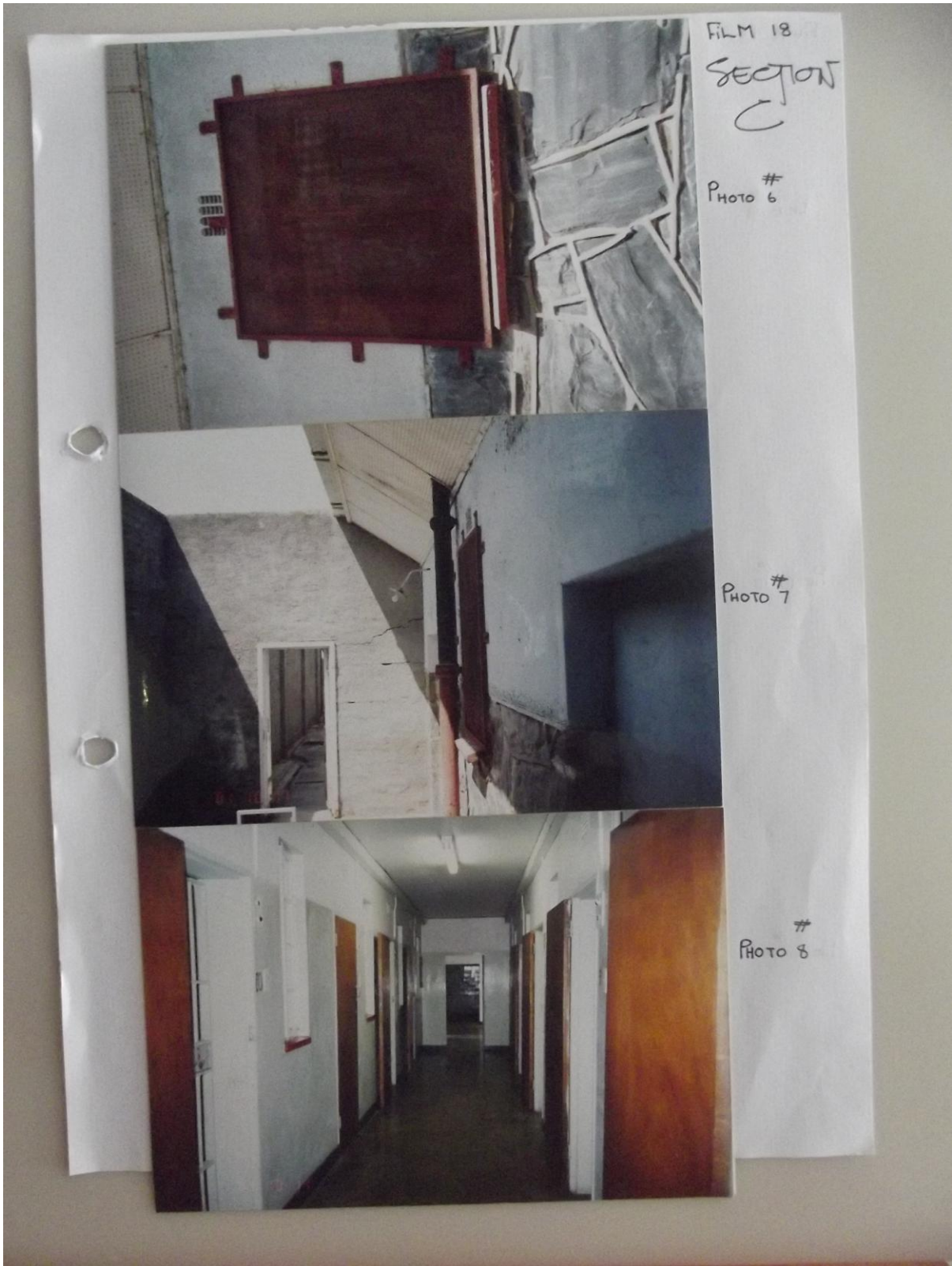
PHOTO #24



PHOTO #25







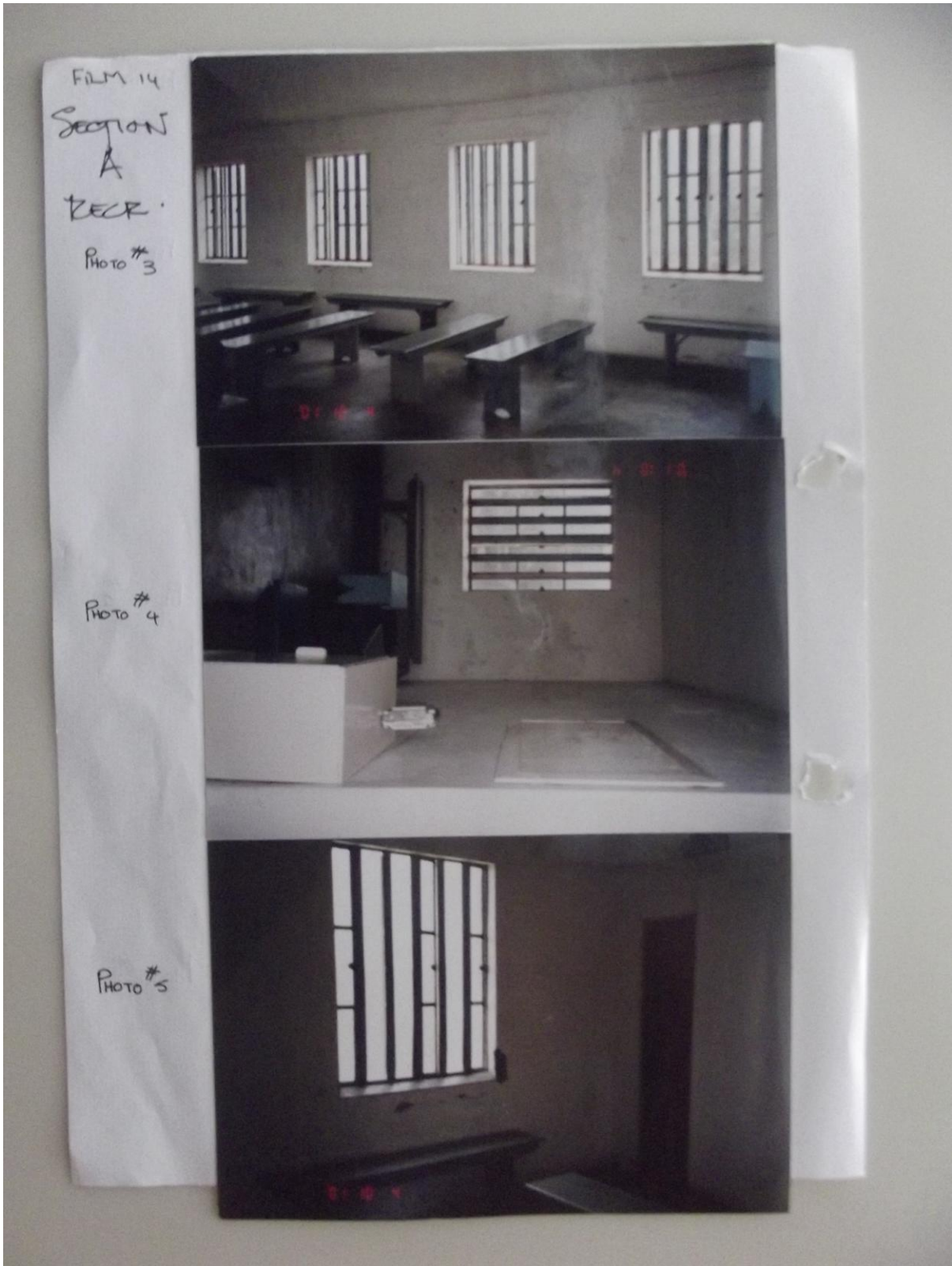


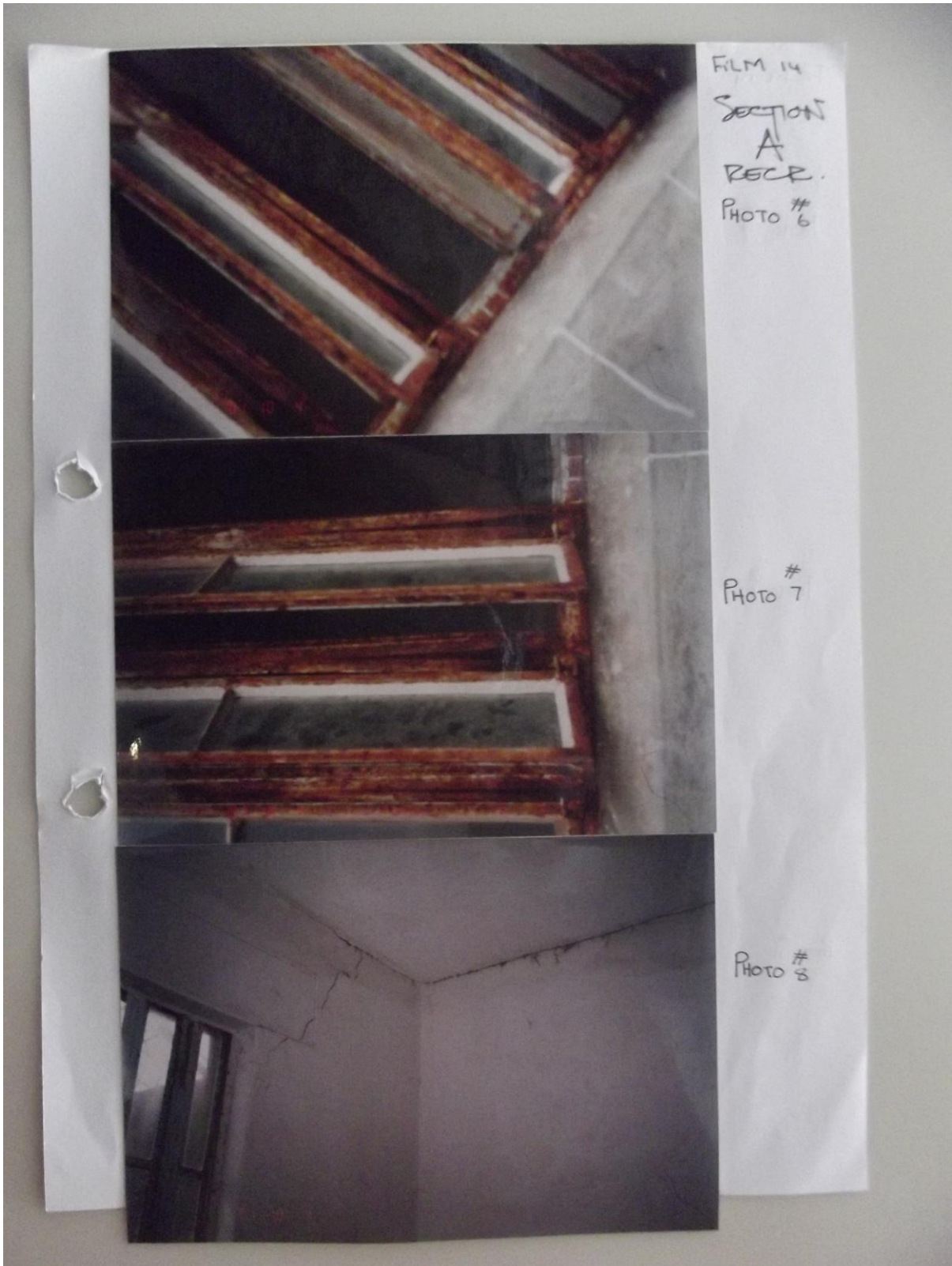


FILM 14
SECTION
A.
RECK.
PHOTO #0

PHOTO #1

PHOTO #2





FILM 14
SECTION
A
BECK.
PHOTO #
9

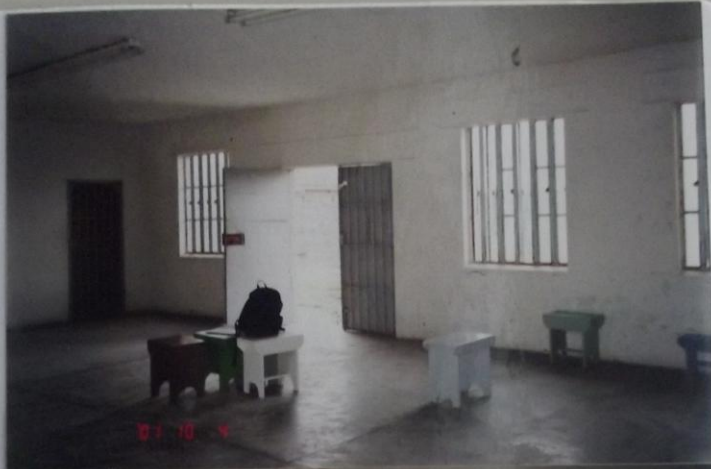
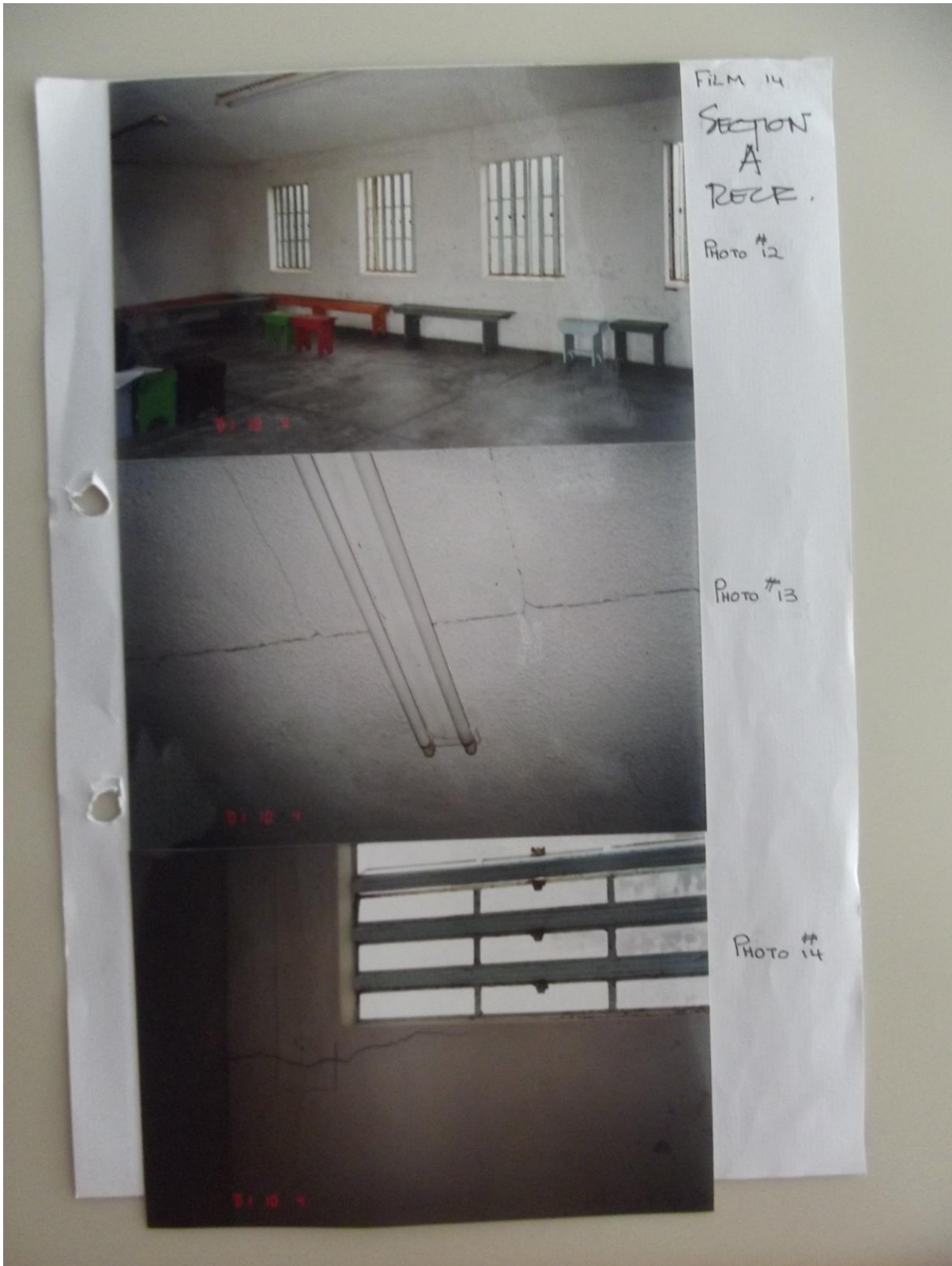


PHOTO #
10



PHOTO #
11





FILM 14
SECTION
A
RECF.
PHOTO #12

PHOTO #13

PHOTO #14

FILM 14
SECTION
B
YARD

PHOTO #15



PHOTO #16



PHOTO #17

