

**ALPHA 1 RECREATIONAL LOUNGE
DESIGN REPORT UPDATE :
MAY 2019**



INTRODUCTION:

Through an inclusive consultation process involving all major role players in the design and development of an improved recreational facility on Robben Island the design has been developed and improved to a common acceptance by members of the team.

This design update has been the result of continued research and interaction with professionals, administrators and related interested parties and the result is an updated design which still conforms to the original scope and requirements.

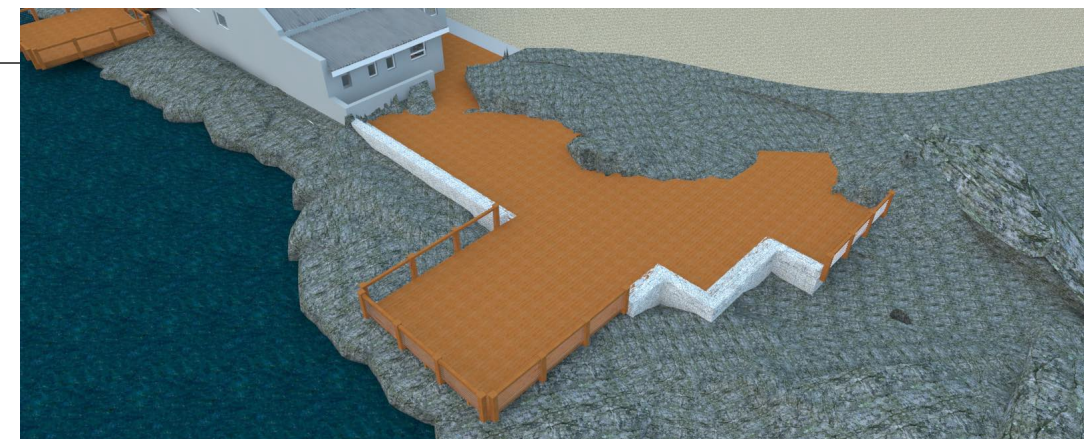
ORIGINAL CONCEPT:

- The original concept had only one new outside area
- The Western or water edge was mostly soft with gabions and no handrails with unrestricted access to the rocks on the water edge
- Floor finishes was a combination / choice between concrete, slate and clay or cement tiles



UPDATED CONCEPT:

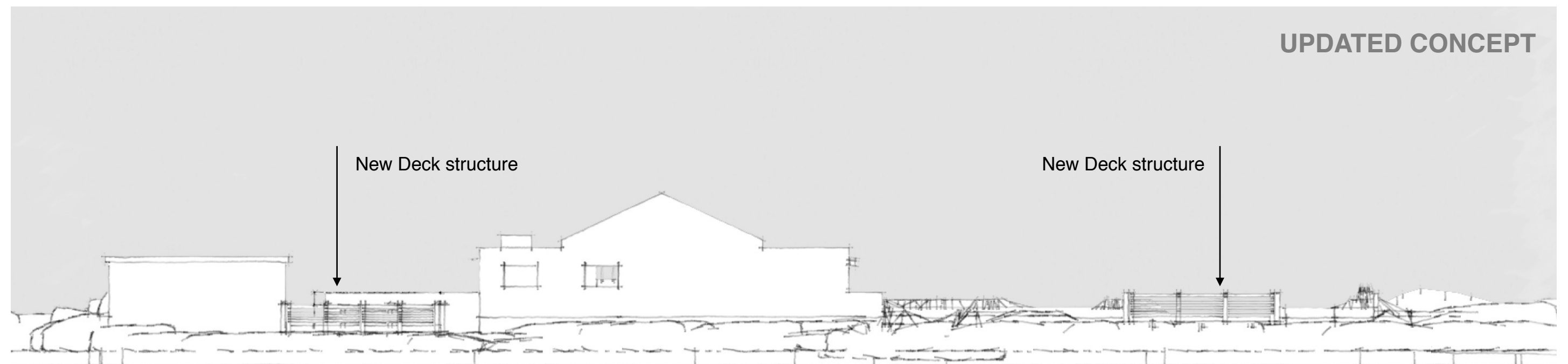
- The updated concept has two new outside areas to both the North and the South of the current Alpha 1 shop.
- The Western or water edge now has additional public safety in the provision of handrails where needed
- The new decks are made from timber or timber composites and have a more prominent edge on the water side whilst retaining the soft edges where possible. Gabions are still utilised where needed.



Island (sea side) approach, views and visual

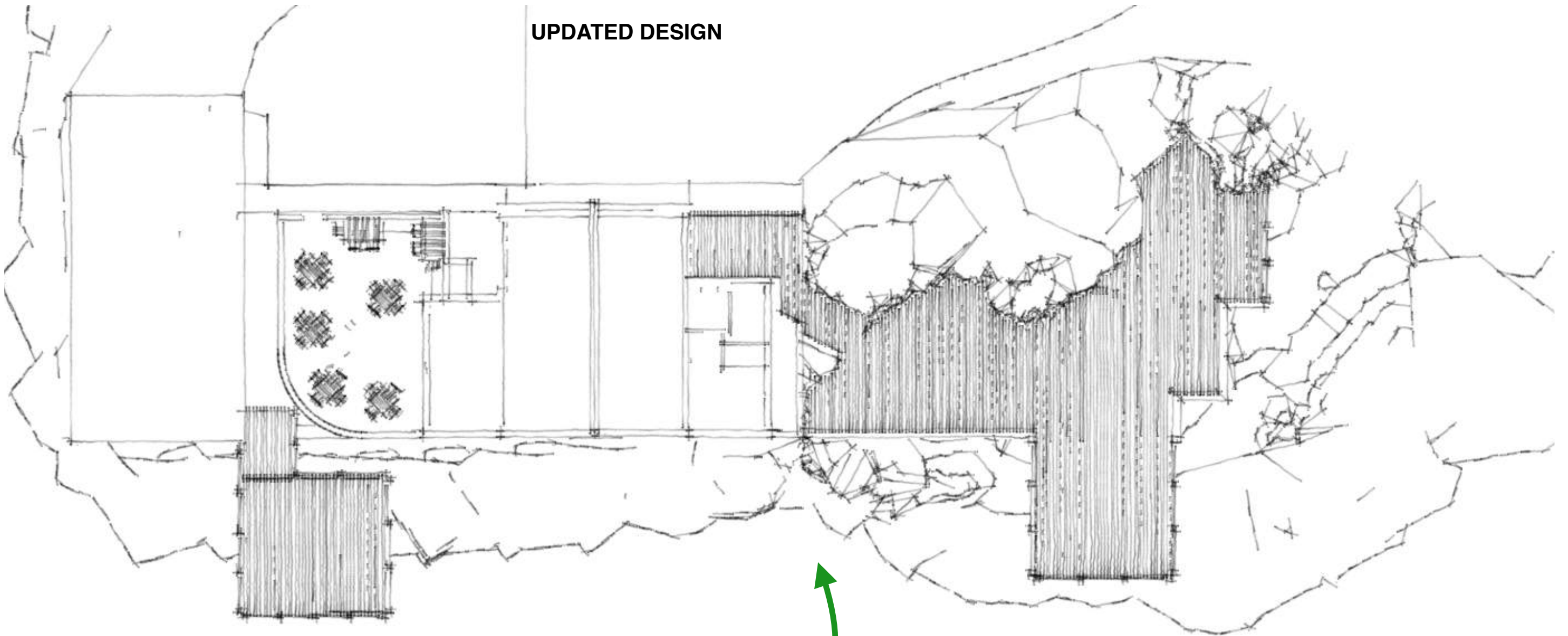


- Low profile
- Material to blend in
- Optional Roofing Structure to be light and resemble canvas or umbrella
 - Roof sheeting to be 3mm powder coated finish fixed to 25 x 4 x 2.5mm hot dip galvanised sub-frame with 75 x 50 x 3mm hot dip galvanised main frame structure.
 - 30mm thick timber table tops to be fixed to 30 x 20 x 2.5mm hot dip galvanised table sub-frame.
 - Modular concrete blocks will be utilised to secure the structure

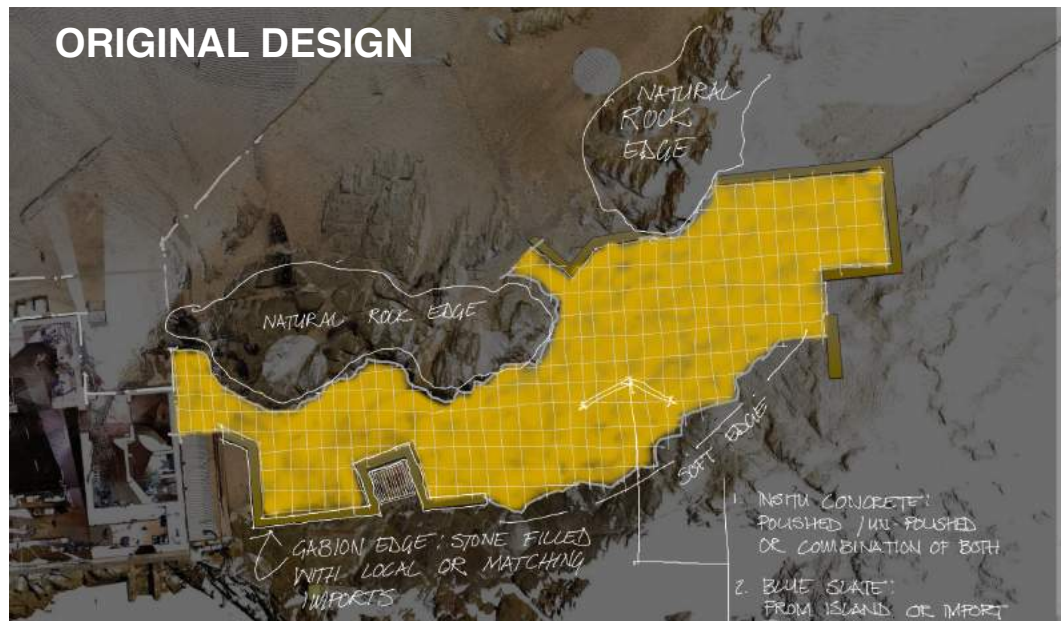


Timber deck structures

UPDATED DESIGN



ORIGINAL DESIGN



The concept update and the original design both utilise the same area to the North of Alpha 1.

The updated design is closer to the high water mark and will be provided with balustrades for safety.

A new deck is proposed on the South side of the existing building

Proposed deck structures

The additional new proposed deck structure (DECK B) is positioned to the South of the existing building and will provide supplementary seating and also a great photo opportunity location. This deck will project over the rocks in totality and be quite protected from the North West winds.

The updated concept allows for a total of two decks, providing outside areas for visitors to Alpha 1. The original outside area to the North of the building remains in the same position as before and approximately the same size but becomes more of a deck structure (DECK A) for the purpose of moving closer to the sea edge with its beautiful views of Table Bay and Table Mountain specifically.

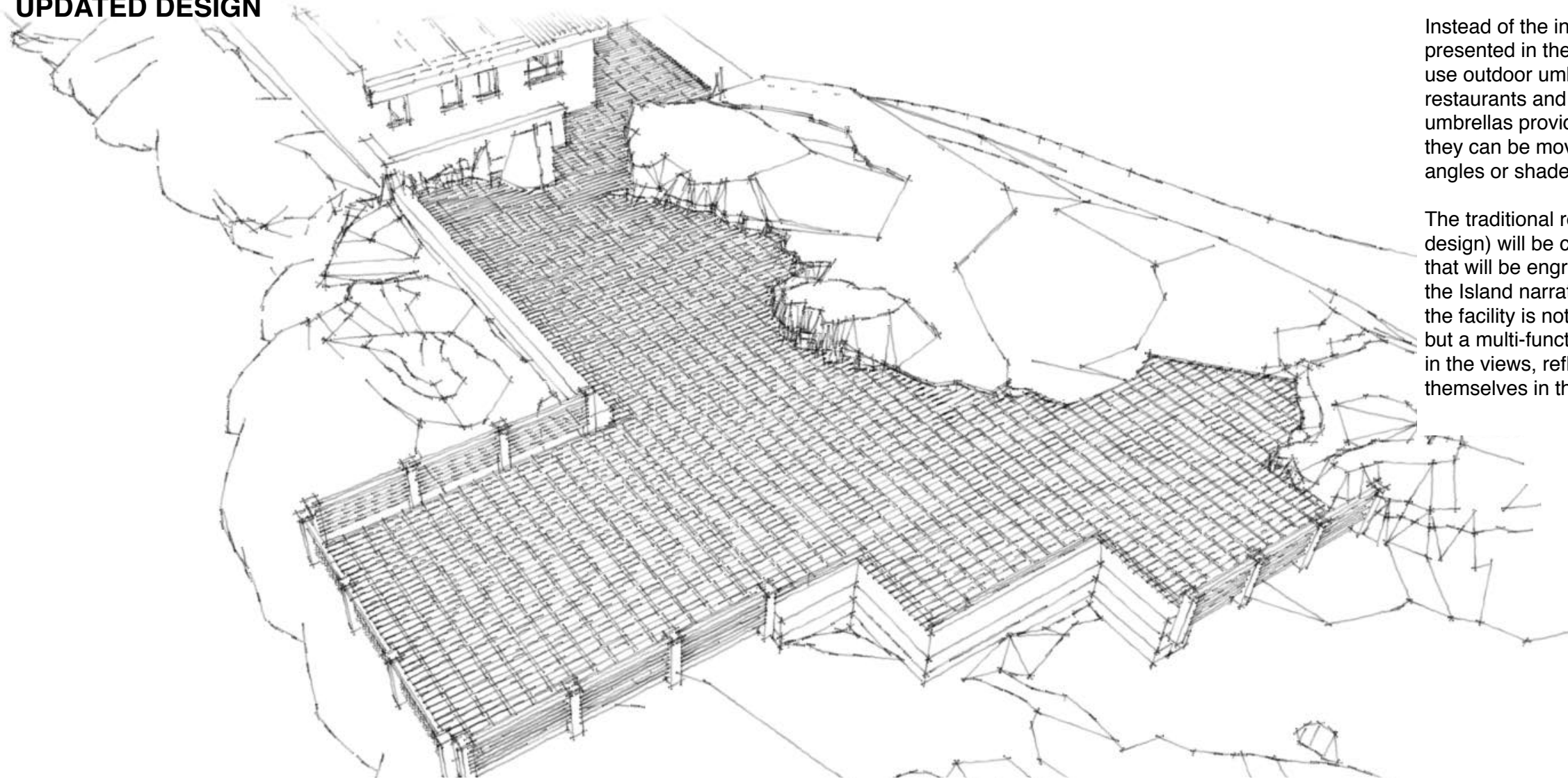


Outside seating



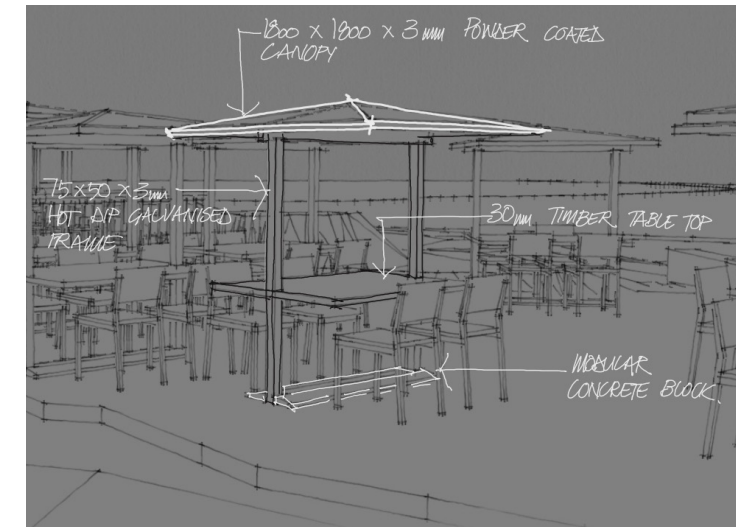
ORIGINAL DESIGN

UPDATED DESIGN



The overhead view shows the design deck structures in context with the existing buildings.

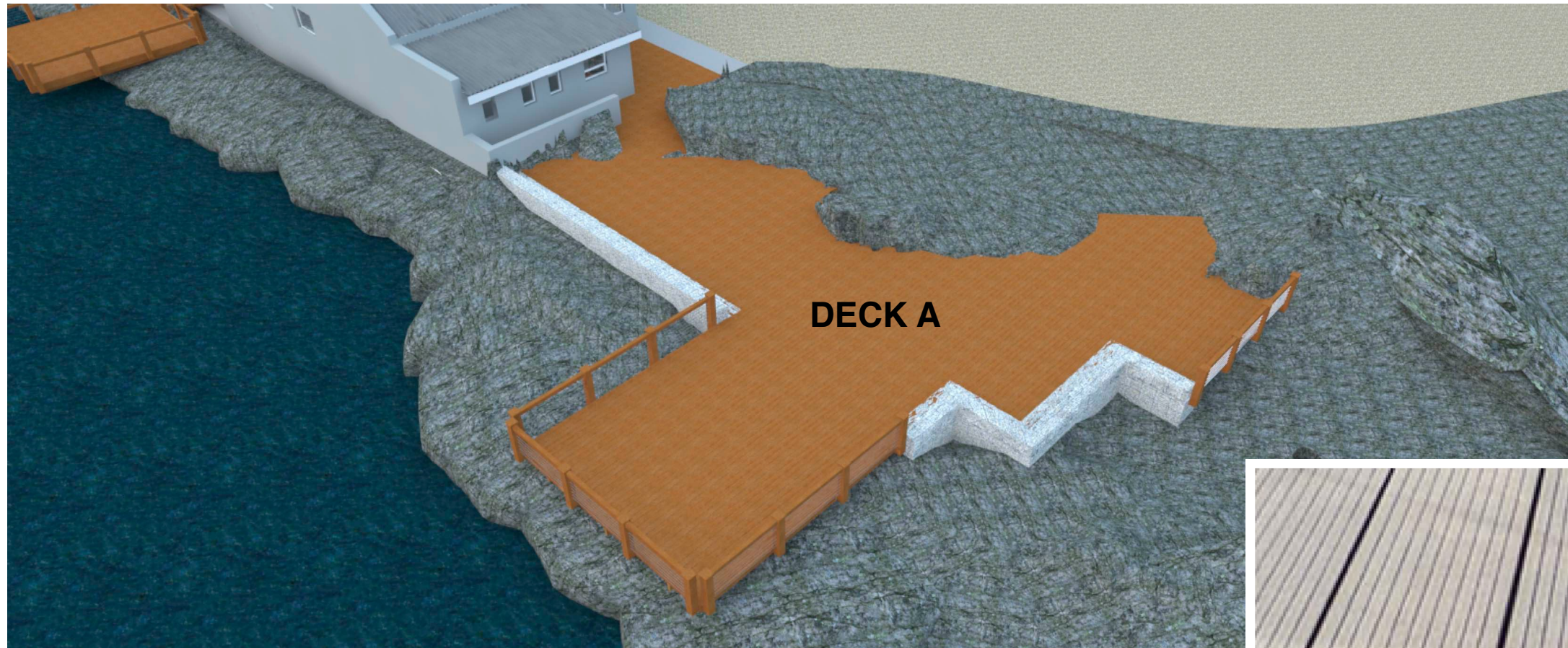
The top image shows the original design and the bottom image shows the updated design.



Instead of the initial 'umbrella like' fixed structures presented in the original design, RIM has opted to use outdoor umbrellas that are commonly used at restaurants and other recreational spaces. The umbrellas provide more shade versatility because they can be moved and tilted to many different angles or shade positions.

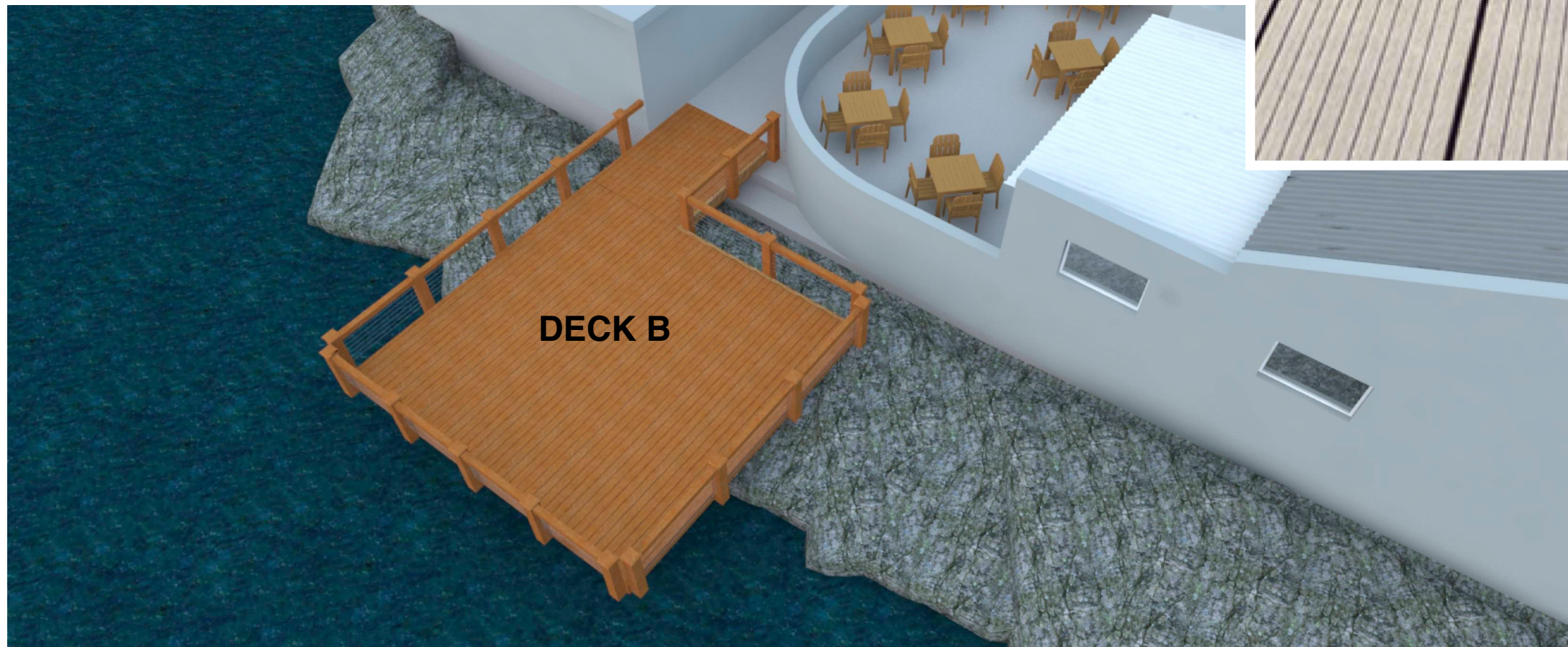
The traditional restaurant seating (as per the original design) will be combined with more artistic seating that will be engraved with words that communicate the Island narrative. This will further reinforce that the facility is not merely a 'sit down and eat' space but a multi-functional space where visitors can take in the views, reflect, unwind and immerse themselves in the surroundings.

Proposed deck structures



The proposed deck structures will be constructed from timber or an alternative board like Eva-tech™ which is an engineered cellulose-polymer composite and consists primarily of bamboo and high-density polyethene.

These products are available in many colours and a final choice will take cognisance of the existing environment and be chosen in order to blend in as much as possible.

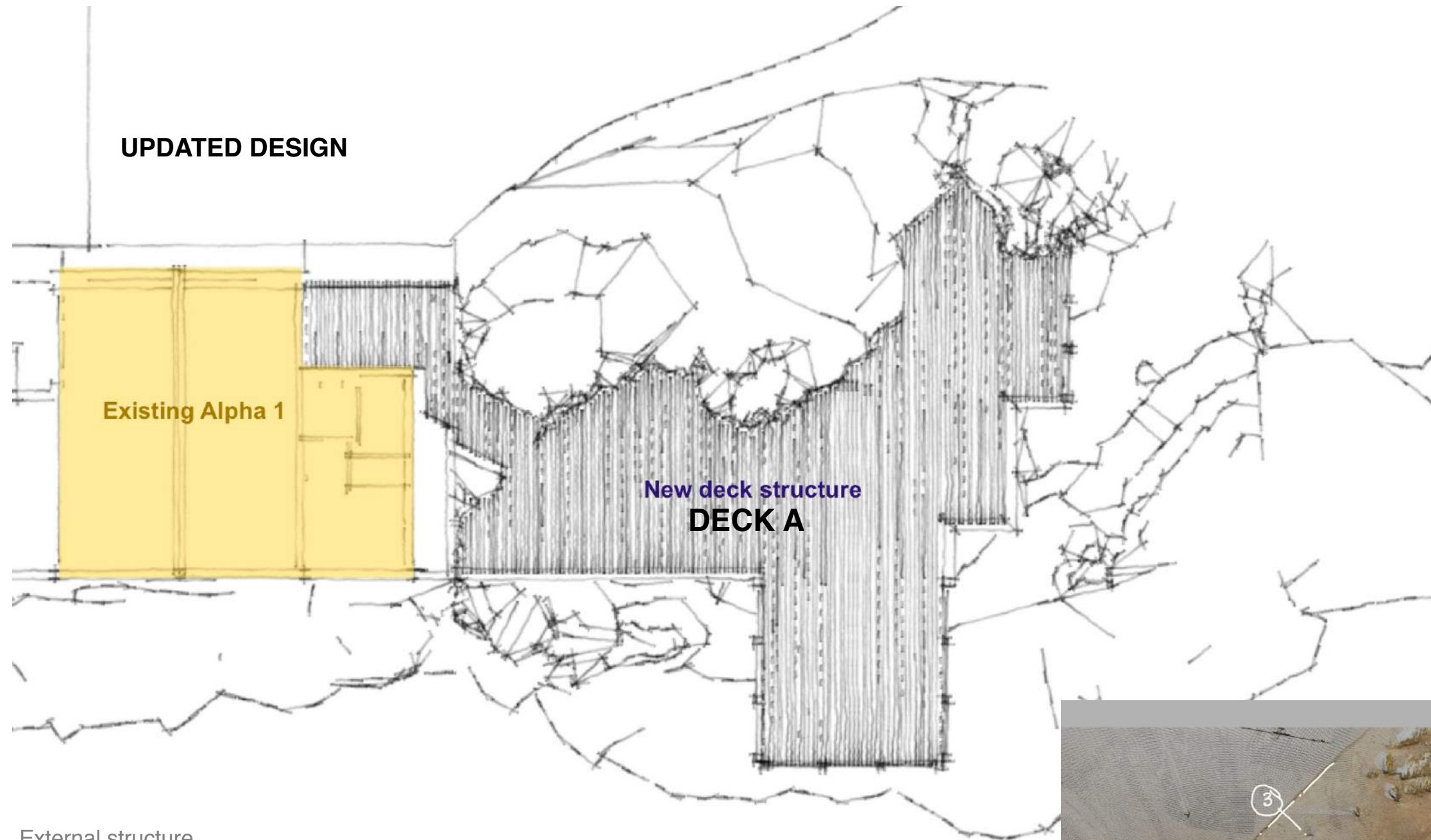


Timber decking

Pursuing the timber decking option has the advantage of easy transportation to the island and easy assembly and disassembly.

Timber or the timber alternative made from environmentally friendly material has a 10 to 15 year life span and guarantee and is aesthetically pleasing.

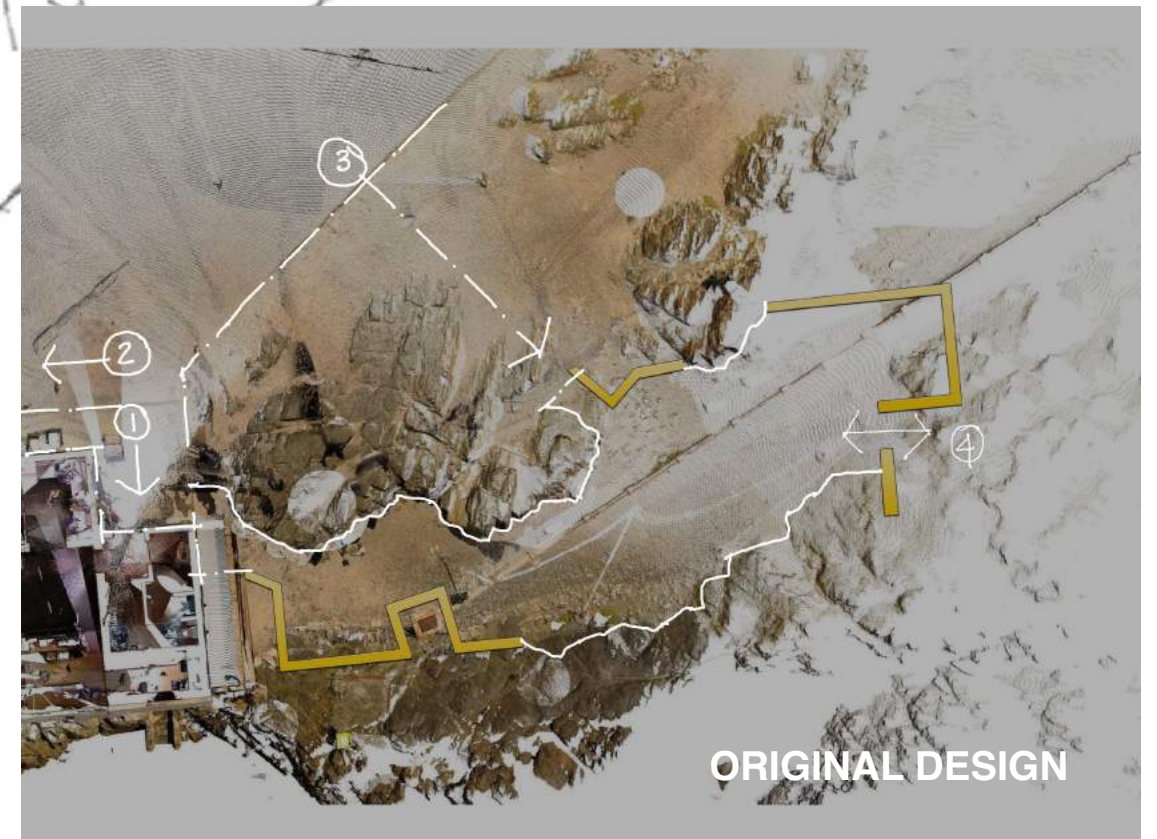
Proposed deck structures



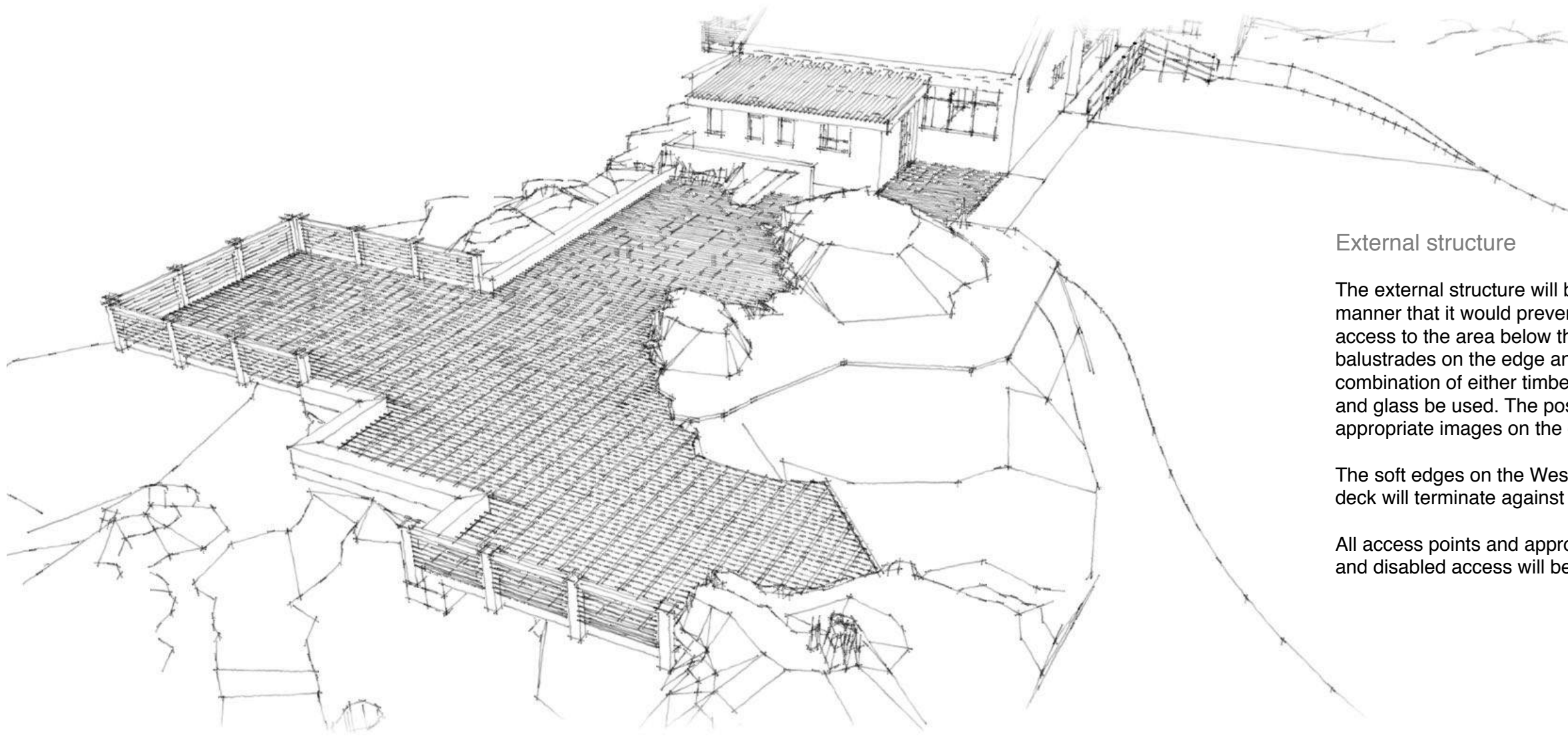
External structure

The external structure will remain in the same position as the original design concept but will have a more deck like edge on the Eastern side where a portion of wooden decking will project over the edge of the rocks in order to enhance the sea experience. Gabion retaining walls will remain in certain areas but on the Western edge they will be more formal than before to fit in with the timber deck. There will be a need for balustrades on the edge but the soft edges on the Western edge will remain as the deck will terminate against the natural rock edges.

All access points and approaches will remain as before and disabled access will be a priority.



Proposed deck structures



External structure

The external structure will be constructed in such a manner that it would prevent animals from gaining access to the area below the decks. There will be balustrades on the edge and it is proposed that a combination of either timber and glass or stainless steel and glass be used. The possibility of depicting heritage appropriate images on the glass is being considered.

The soft edges on the Western edge will remain as the deck will terminate against the natural rock edges.

All access points and approaches will remain as before and disabled access will be a priority.

