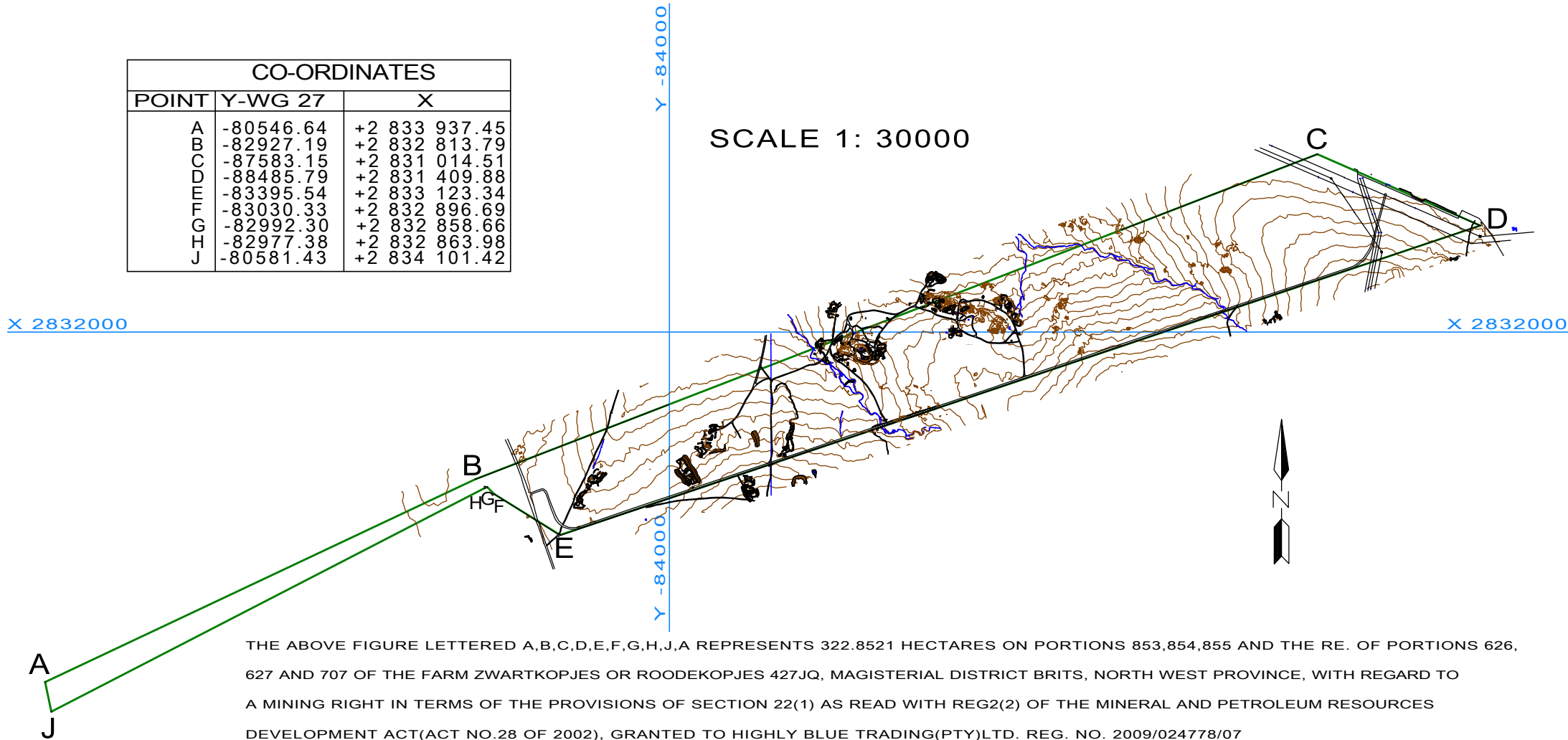


**SKETCHPLAN REG.2(2)
HIGHLY BLUE TRADING(PTY)LTD.
ELANDSFONTEIN QUARRY
MINING RIGHT APPLICATION**

CO-ORDINATES		
POINT	Y-WG 27	X
A	-80546.64	+2 833 937.45
B	-82927.19	+2 832 813.79
C	-87583.15	+2 831 014.51
D	-88485.79	+2 831 409.88
E	-83395.54	+2 833 123.34
F	-83030.33	+2 832 896.69
G	-82992.30	+2 832 858.66
H	-82977.38	+2 832 863.98
J	-80581.43	+2 834 101.42

SCALE 1: 30000



THE ABOVE FIGURE LETTERED A,B,C,D,E,F,G,H,J,A REPRESENTS 322.8521 HECTARES ON PORTIONS 853,854,855 AND THE RE. OF PORTIONS 626, 627 AND 707 OF THE FARM ZWARTKOPJES OR ROODEKOPJES 427JQ, MAGISTERIAL DISTRICT BRITS, NORTH WEST PROVINCE, WITH REGARD TO A MINING RIGHT IN TERMS OF THE PROVISIONS OF SECTION 22(1) AS READ WITH REG2(2) OF THE MINERAL AND PETROLEUM RESOURCES DEVELOPMENT ACT(ACT NO.28 OF 2002), GRANTED TO HIGHLY BLUE TRADING(PTY)LTD. REG. NO. 2009/024778/07

Compiled by: 
L. du Preez(PS0064)
Professional Surveyor

M. MOLOI
F.A.O.B. OF HIGHLY BLUE TRADING(PTY)LTD.

DEPARTMENT OF MINERALS AND ENERGY

DATE: _____

DATE APPROVED: _____