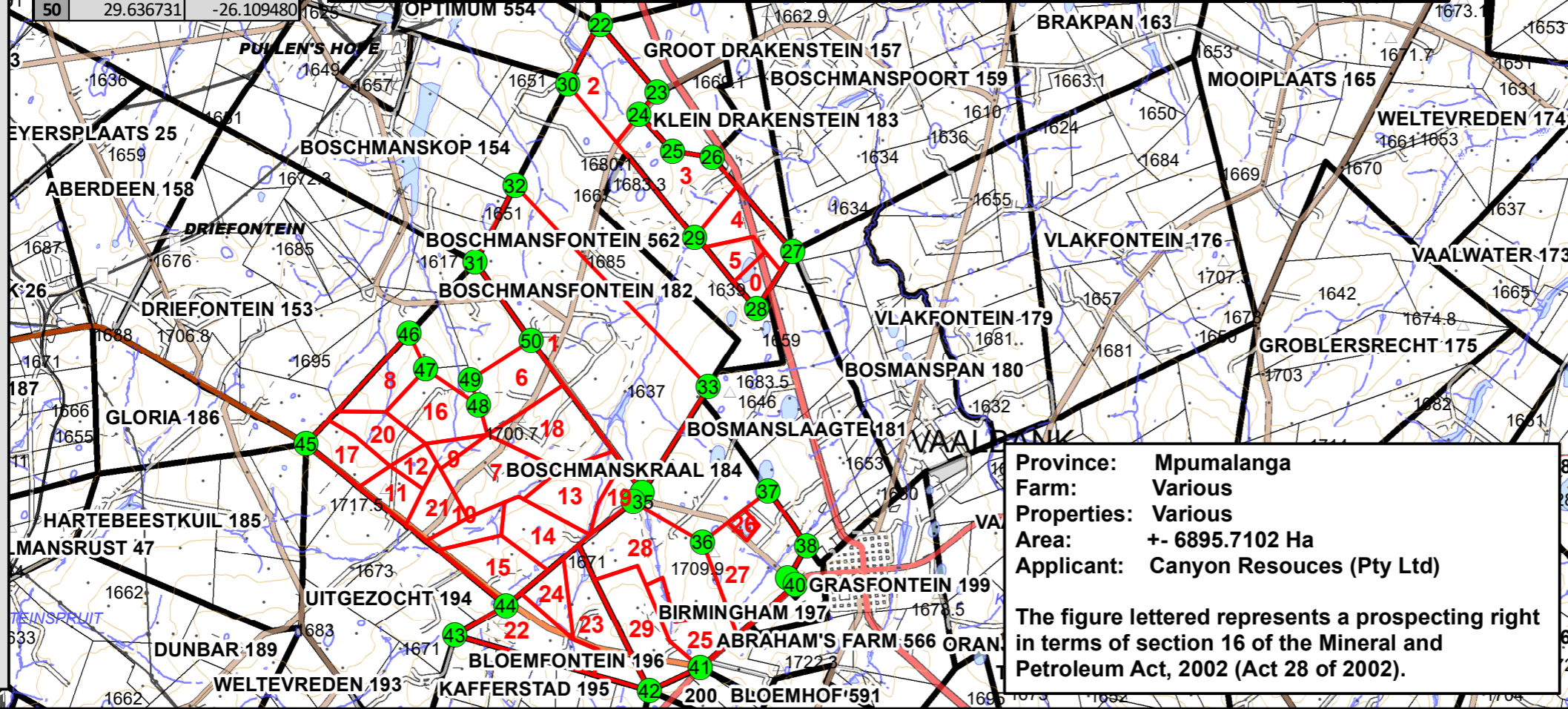


- Legend**
- TREE
  - GRAVE
  - MINE SHAFT
  - SILLO
  - TELECOM TOWER
  - STATION
  - SPOT HEIGHT
  - SPOT HEIGHT
  - TRIGONOMETRIC BEACON
  - CLUB HOUSE POINT
  - HOUSE
  - POST OFFICE
  - RUIN
  - SCHOOL
  - STORE SHOP
  - TREE LINE
  - ANNUAL CHANGE
  - ISOGONIC
  - BRIDGE
  - CONVEYOR BELT
  - POWER LINE SINGLE
  - LARGE STATION
  - NARROW GAUGE
  - STANDARD
  - NON-PERENNIAL CENTER LINE
  - PERENNIAL CENTER LINE
  - CANAL
  - FURROW
  - CONTOUR
  - ARTERIAL ROUTE
  - MAIN ROAD
  - NATIONAL ROUTE
  - OTHER ACCESS
  - SECONDARY ROAD
  - STREET
  - TRACK FOOTPATH
  - MINE DUMP TOP
  - SLIMES DAM TOP
  - CULTIVATED LAND
  - ORCHARD VINEYARD
  - PLANTATION
  - WOODLAND
  - ERODED AREA
  - DAM
  - LARGE RESERVOIR
  - MARSH VLEI
  - NON-PERENNIAL PAN
  - PERENNIAL PAN
  - SEWERAGE WORKS
  - GOLF COURSE
  - HIGH URBAN DENSITY
  - RECREATION AREA
  - NON-PERENNIAL EXTENT
  - PERENNIAL EXTENT
  - LARGE BUILDING
  - SCHOOL AREA
  - STORE SHOP AREA

FID	X-Coordinate	Y-Coordinate	FID	FARMNAME	SG_CODE	FARMNO	SUBDIVNO	MAGISDISTR	MUNIC	PROVINCE
22	29.653458	-26.041344	0	BOSCHMANSFONTEIN	TOIS00000000018200000	182	0	Steve Tshwete Local Municipality	Middelburg	Mpumalanga
23	29.667012	-26.055872	1	BOSCHMANSFONTEIN	TOIS00000000018200001	182	1	Steve Tshwete Local Municipality	Middelburg	Mpumalanga
24	29.662675	-26.060705	2	BOSCHMANSFONTEIN	TOIS00000000018200003	182	3	Steve Tshwete Local Municipality	Middelburg	Mpumalanga
25	29.670735	-26.068593	3	BOSCHMANSFONTEIN	TOIS00000000018200004	182	4	Steve Tshwete Local Municipality	Middelburg	Mpumalanga
26	29.680231	-26.069900	4	BOSCHMANSFONTEIN	TOIS00000000018200007	182	7	Steve Tshwete Local Municipality	Middelburg	Mpumalanga
27	29.699552	-26.090208	5	BOSCHMANSFONTEIN	TOIS00000000018200008	182	8	Steve Tshwete Local Municipality	Middelburg	Mpumalanga
28	29.690982	-26.102649	6	BOSCHMANSKRAAL	TOIS00000000018400008	184	8	Steve Tshwete Local Municipality	Middelburg	Mpumalanga
29	29.676038	-26.087210	7	BOSCHMANSKRAAL	TOIS00000000018400009	184	9	Steve Tshwete Local Municipality	Middelburg	Mpumalanga
30	29.645554	-26.054134	8	BOSCHMANSKRAAL	TOIS00000000018400010	184	10	Steve Tshwete Local Municipality	Middelburg	Mpumalanga
31	29.623344	-26.092618	9	BOSCHMANSKRAAL	TOIS00000000018400011	184	11	Steve Tshwete Local Municipality	Middelburg	Mpumalanga
32	29.632911	-26.076020	10	BOSCHMANSKRAAL	TOIS00000000018400012	184	12	Steve Tshwete Local Municipality	Middelburg	Mpumalanga
33	29.679270	-26.119444	11	BOSCHMANSKRAAL	TOIS00000000018400015	184	15	Steve Tshwete Local Municipality	Middelburg	Mpumalanga
34	29.663450	-26.142224	12	BOSCHMANSKRAAL	TOIS00000000018400017	184	17	Steve Tshwete Local Municipality	Middelburg	Mpumalanga
35	29.661261	-26.144201	13	BOSCHMANSKRAAL	TOIS00000000018400018	184	18	Steve Tshwete Local Municipality	Middelburg	Mpumalanga
36	29.677915	-26.152876	14	BOSCHMANSKRAAL	TOIS00000000018400003	184	3	Steve Tshwete Local Municipality	Middelburg	Mpumalanga
37	29.693652	-26.141902	15	BOSCHMANSKRAAL	TOIS00000000018400004	184	4	Steve Tshwete Local Municipality	Middelburg	Mpumalanga
38	29.702935	-26.153714	16	BOSCHMANSKRAAL	TOIS00000000018400006	184	6	Steve Tshwete Local Municipality	Middelburg	Mpumalanga
39	29.698392	-26.160665	17	BOSCHMANSKRAAL	TOIS00000000018400000	184	0	Steve Tshwete Local Municipality	Middelburg	Mpumalanga
40	29.700136	-26.162125	18	BOSCHMANSKRAAL	TOIS00000000018400001	184	1	Steve Tshwete Local Municipality	Middelburg	Mpumalanga
41	29.677356	-26.179886	19	BOSCHMANSKRAAL	TOIS00000000018400002	184	2	Steve Tshwete Local Municipality	Middelburg	Mpumalanga
42	29.665191	-26.184965	20	BOSCHMANSKRAAL	TOIS00000000018400016	184	16	Steve Tshwete Local Municipality	Middelburg	Mpumalanga
43	29.618375	-26.172955	21	BOSCHMANSKRAAL	TOIS00000000018400005	184	5	Steve Tshwete Local Municipality	Middelburg	Mpumalanga
44	29.630703	-26.166741	22	BLOEMFONTEIN	TOIS00000000019600000	196	0	Steve Tshwete Local Municipality	Middelburg	Mpumalanga
45	29.582646	-26.131754	23	BLOEMFONTEIN	TOIS00000000019600001	196	1	Steve Tshwete Local Municipality	Middelburg	Mpumalanga
46	29.607426	-26.107994	24	BLOEMFONTEIN	TOIS00000000019600002	196	2	Steve Tshwete Local Municipality	Middelburg	Mpumalanga
47	29.611422	-26.115659	25	BIRMINGHAM	TOIS00000000019700004	197	4	Steve Tshwete Local Municipality	Middelburg	Mpumalanga
48	29.624099	-26.123386	26	BIRMINGHAM	TOIS00000000019700005	197	5	Steve Tshwete Local Municipality	Middelburg	Mpumalanga
49	29.622214	-26.117881	27	BIRMINGHAM	TOIS00000000019700001	197	1	Steve Tshwete Local Municipality	Middelburg	Mpumalanga
50	29.636731	-26.109480	28	BIRMINGHAM	TOIS00000000019700003	197	3	Steve Tshwete Local Municipality	Middelburg	Mpumalanga
			29	BIRMINGHAM	TOIS00000000019700002	197	2	Steve Tshwete Local Municipality	Middelburg	Mpumalanga

- Legend**
- Birmingham South
  - Corner Points
  - Parent Farms
  - Farm Portions



Province: Mpumalanga  
 Farm: Various  
 Properties: Various  
 Area: +- 6895.7102 Ha  
 Applicant: Canyon Resources (Pty Ltd)

The figure lettered represents a prospecting right in terms of section 16 of the Mineral and Petroleum Act, 2002 (Act 28 of 2002).

**Canyon Resources (Pty) Ltd**

**DMR Ref:** MP 30/5/1/1/2/1182 PR

Kilometers

1:150,000