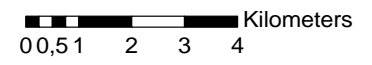


SMARTISTAX (PTY) LTD

REG NO: 2016/539697/07

Scale: 1:20 000



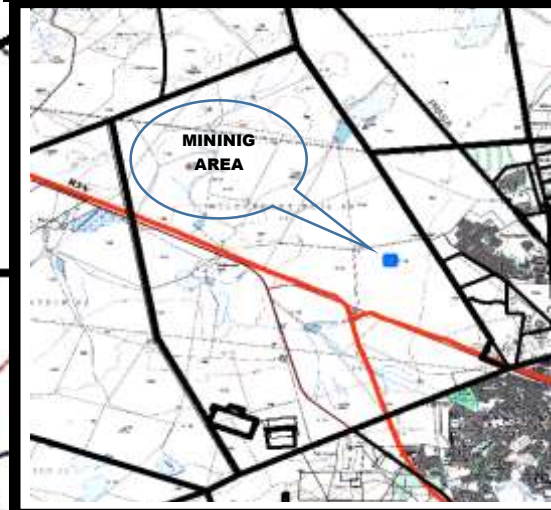
Geographic Coordinate System:

GCS_WGS_1984

Datum: D_WGS_1984

MINING BOUNDARY CO-ORDINATES

ID	LATITUDE	LONGITUDE
A	-28.666415	24.688571
B	-28.666415	24.690788
C	-28.668204	24.690791
D	-28.668207	24.688571



PLAN PREPARED IN ACCORDANCE TO REGULATION 2 (2) OF THE MPRDA, 2002 (ACT NO 28 OF 2002)

Description of the land under application for MINING PERMIT:

The figure: A - D representing 5 hectares of land in extent being:

Remaining Extent of WILDEBEEST KUIL 69

Frances Baard District Municipality, Northern Cape



LEGENDS

- Mining Area
- Farm Portions
- Roads
- Rail
- Perennial Water
- Perennial Rivers