

APPENDIX 5

PHOTOGRAPHS



Bophirima Site



Coarse Colluvium

Residual Basaltic Lava

APPENDIX 6

SITE PLAN

MOOKODI INTEGRATION PROJECT

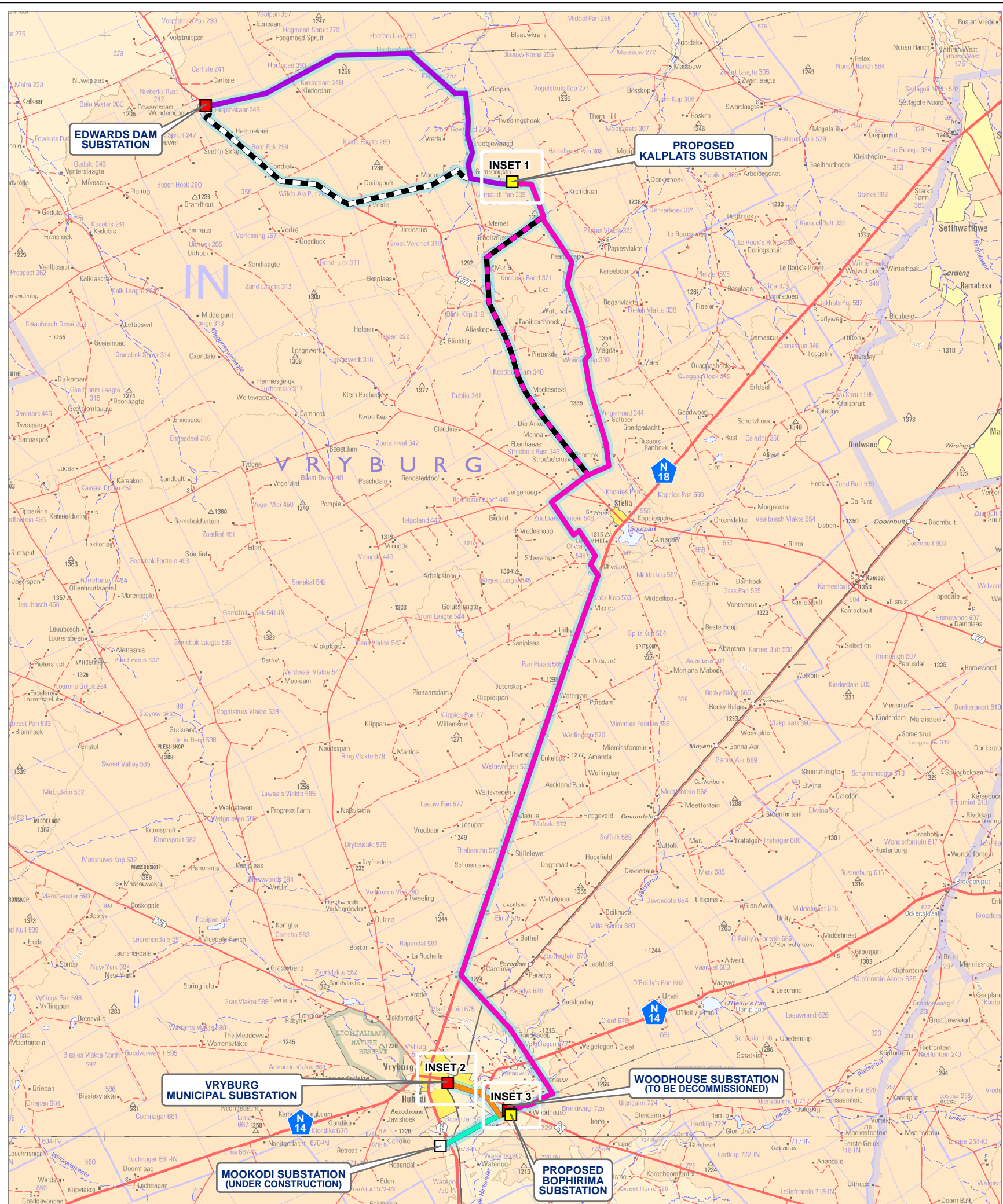
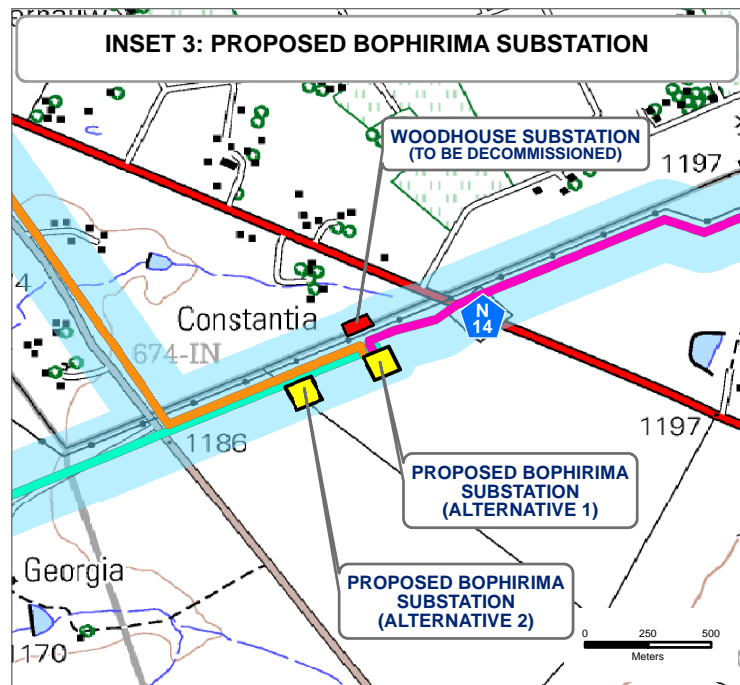
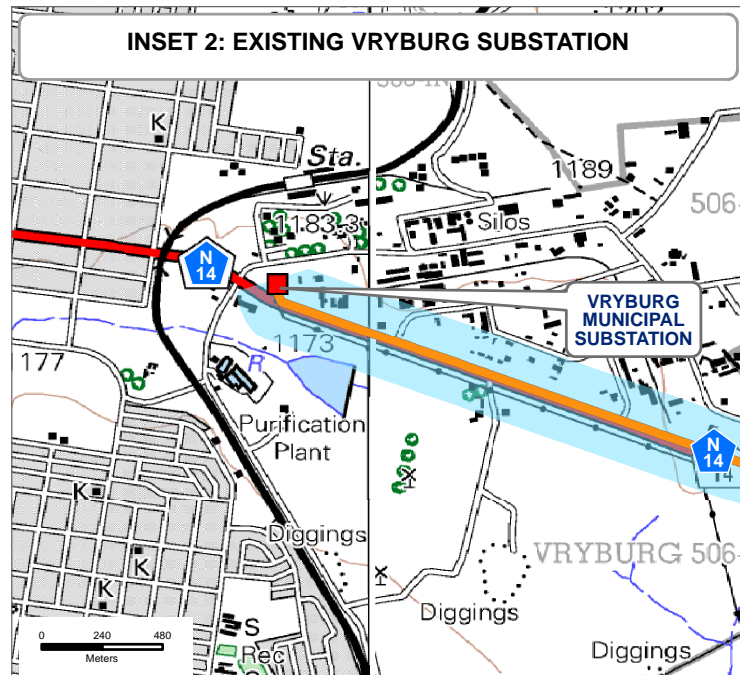
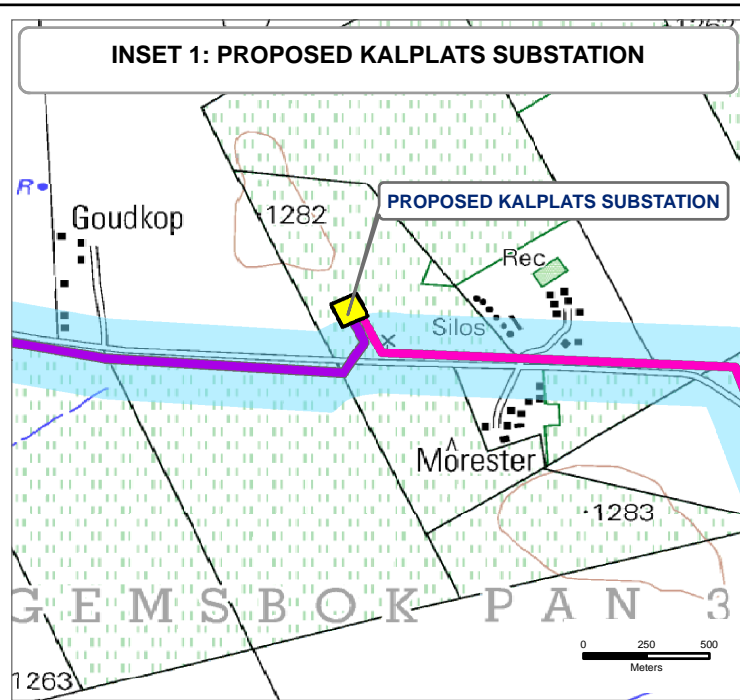
ROUTE OVERVIEW (EIA PHASE)

Legend

- Existing Substations
- Proposed Substations
- Substation Under Construction

Proposed Routes

- Bophirima Substation to Kalplats Substation (Alternative 1)
- Bophirima Substation to Kalplats Substation (Alternative 2)
- Bophirima Substation to Existing Vryburg Substation
- Mookodi Transmission Substation to Bophirima Substation
- Kalplats Substation to Existing Edwards Dam Substation (Alternative 1)
- Kalplats Substation to Existing Edwards Dam Substation (Alternative 3)
- 300m Wide Assessment Corridor



Kilometers

SiVEST

ENVIRONMENTAL DIVISION
51 WESSELS ROAD
RIVONIA, 2128
JOHANNESBURG
SOUTH AFRICA

Phone: +27 11 798 0600
Fax: +27 11 803 7272
e-mail: info@sivest.co.za

Project No	Map Ref No	Prepared By	Date
10466	10466/EIA_01	KLS	17/08/2012

"COPYRIGHT IS VESTED IN SIVEST IN TERMS OF THE COPYRIGHT ACT (ACT 98 OF 1978) AND NO USE OR REPRODUCTION OR DUPLICATION THEREOF MAY OCCUR WITHOUT THE WRITTEN CONSENT OF THE AUTHOR"

THIS MAP HAS BEEN PREPARED UNDER THE CONTROLS ESTABLISHED BY THE SIVEST QUALITY MANAGEMENT SYSTEM AND MEETS THE REQUIREMENTS OF THE SETA QUALITY GRADING SYSTEM THAT IS ISO COMPLIANT

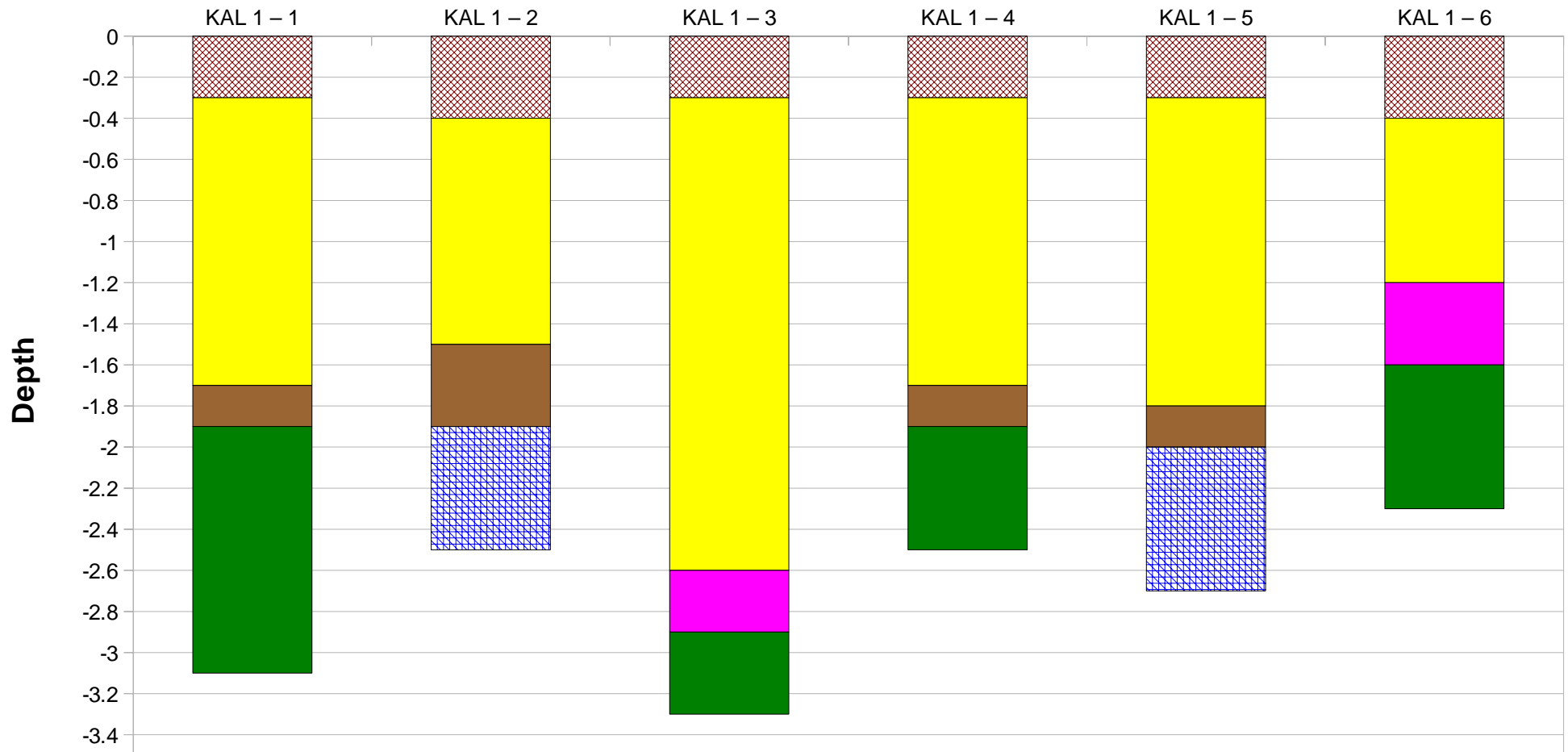


Site Plan -Kalplaats Site, Morester

APPENDIX 7

IDEALISED GEOLOGICAL PROFILES

Idealised Geological Profiles - Kalplaats - Site 1



Trial Pit Numbers



Topsoil



Aeolian Sands



Pebble Marker



Reworked Residual Granite

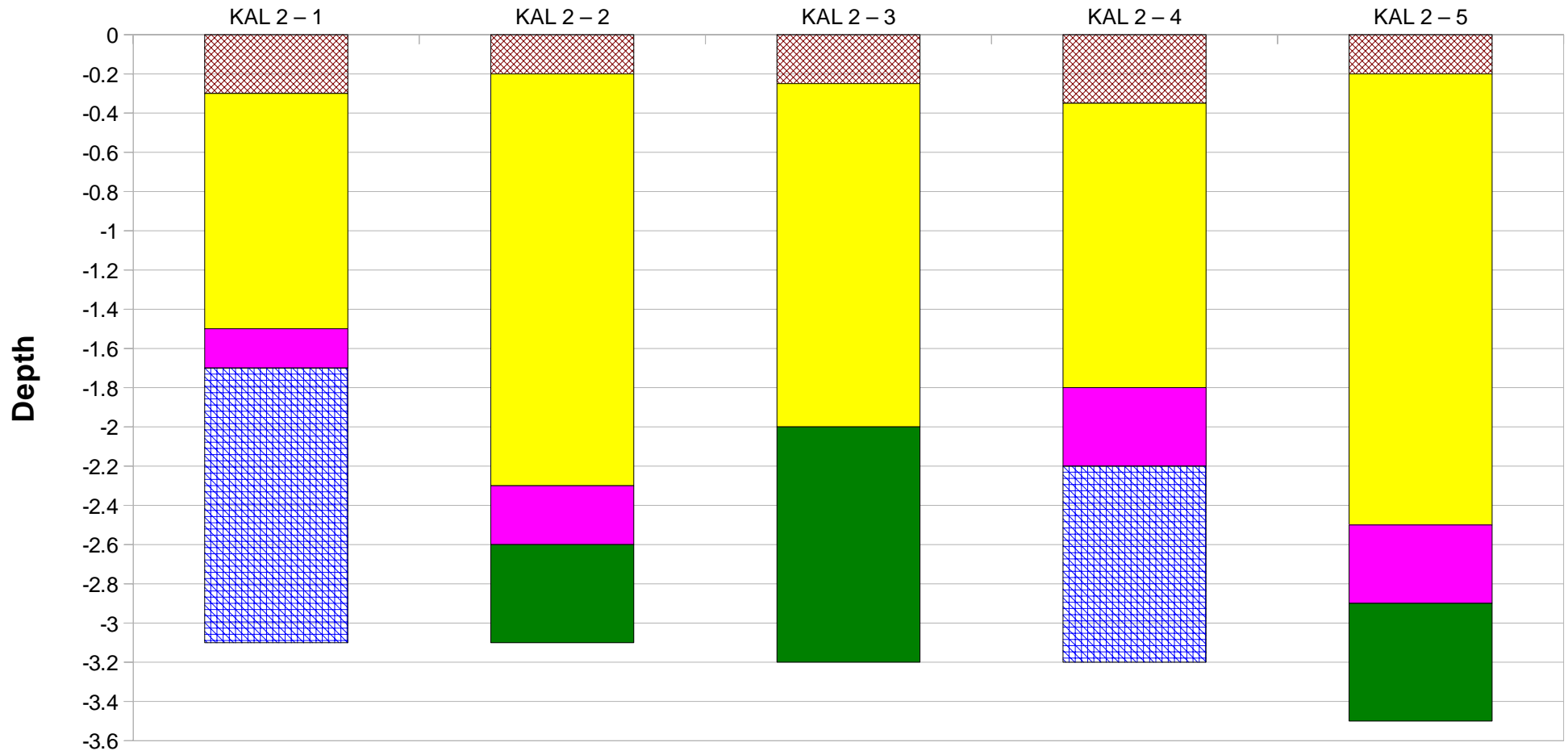


Residual Granite



Very Dense to Very Soft Rock Granite

Idealised Geological Profiles - Kalplaats - Site 2



Trial Pit Numbers



Topsoil



Aeolian Sands



Reworked Residual Granite



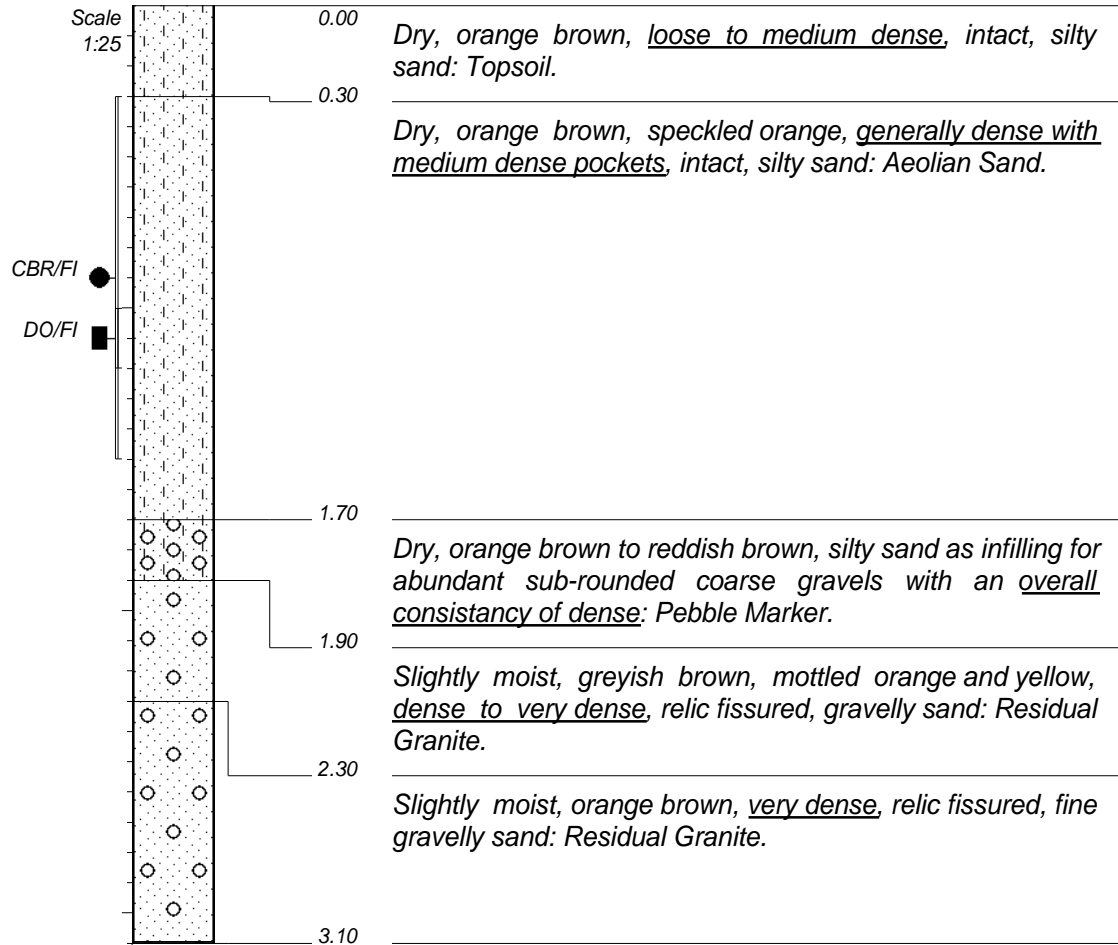
Residual Granite



Very Dense to Very Soft Rock Granite

APPENDIX 8

TRIAL PIT PROFILES



NOTES

- 1) Final reach of TLB @ 3.1m
- 2) No water seepage observed
- 3) Disturbed sample CBR/FI 0.3--1.5m
- 4) Undisturbed sample DO/FI 1.0--1.2m

CONTRACTOR : Die Timmerman
MACHINE : JCB
DRILLED BY : David
PROFILED BY : M.C.

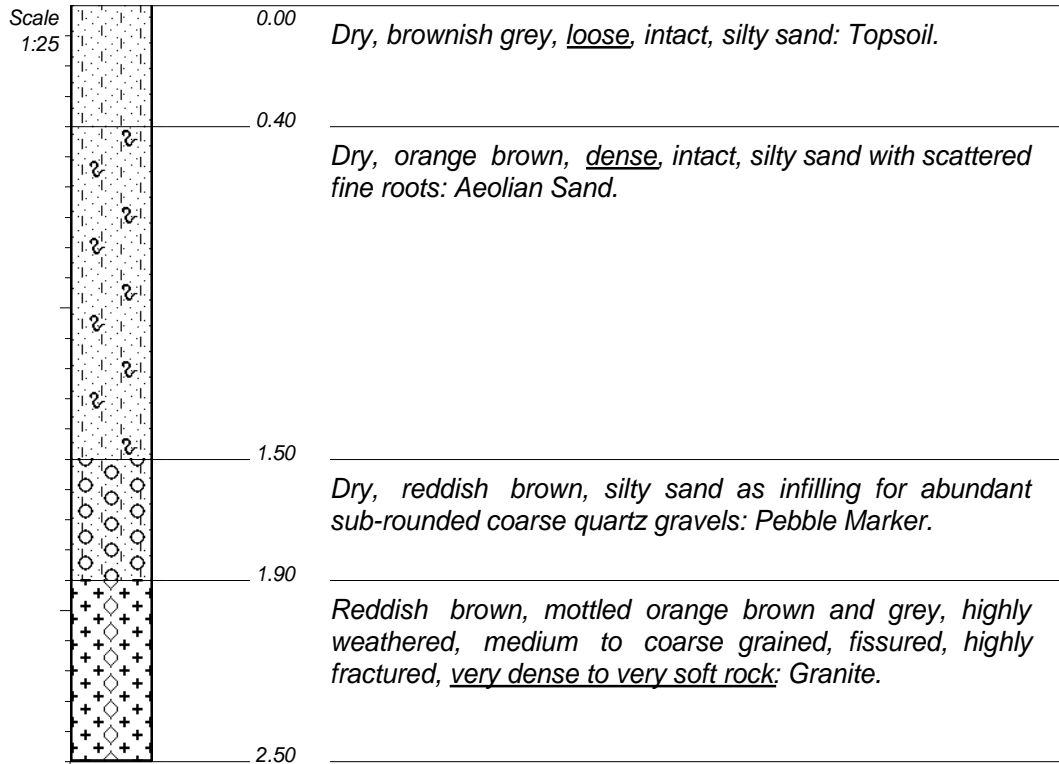
INCLINATION : Vertical
DIAM :
DATE : 04/09/2012
DATE :

ELEVATION :
X-COORD : 2911484
Y-COORD : 0020655

TYPE SET BY : Rev 1
SETUP FILE : STANDARD.SET

DATE : 08/10/12 11:26
TEXT : ..\2012\10162--1.TXT

HOLE No: KAL1-1



NOTES

- 1) Refusal of TLB @ 2.5m
- 2) No water seepage observed

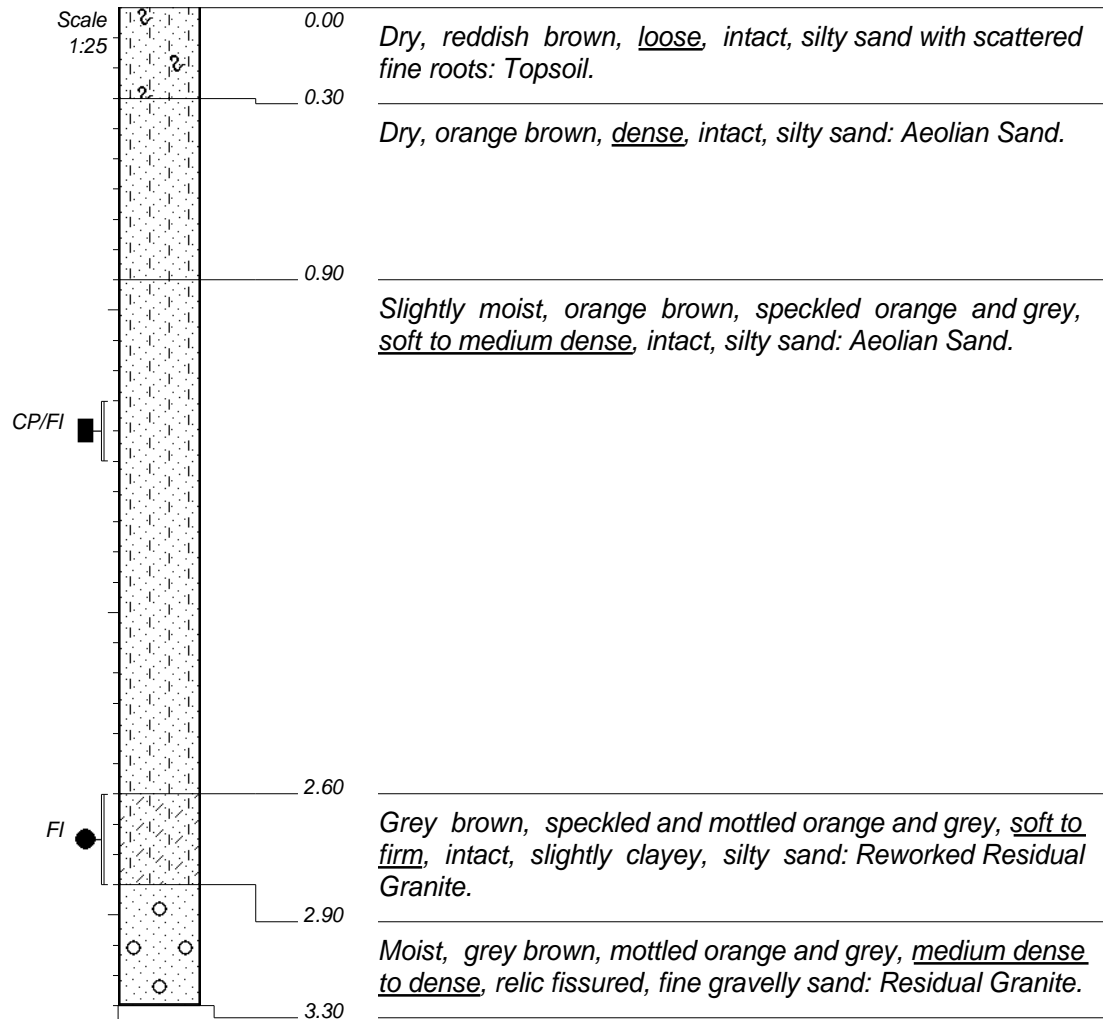
CONTRACTOR : Die Timmerman
MACHINE : JCB
DRILLED BY : David
PROFILED BY : M.C.

INCLINATION :
DIAM :
DATE : 04/09/2012
DATE :
DATE : 08/10/12 11:26
TEXT : ..\2012\10162--1.TXT

ELEVATION :
X-COORD : 2911528
Y-COORD : 0020745

HOLE No: KAL1-2

TYPE SET BY : Rev 1
SETUP FILE : STANDARD.SET



NOTES

- 1) Final reach of TLB @ 3.3m
- 2) No water seepage observed
- 3) Undisturbed sample CP/FI 1.3--1.5m
- 4) Disturbed sample FI 2.6--2.9m

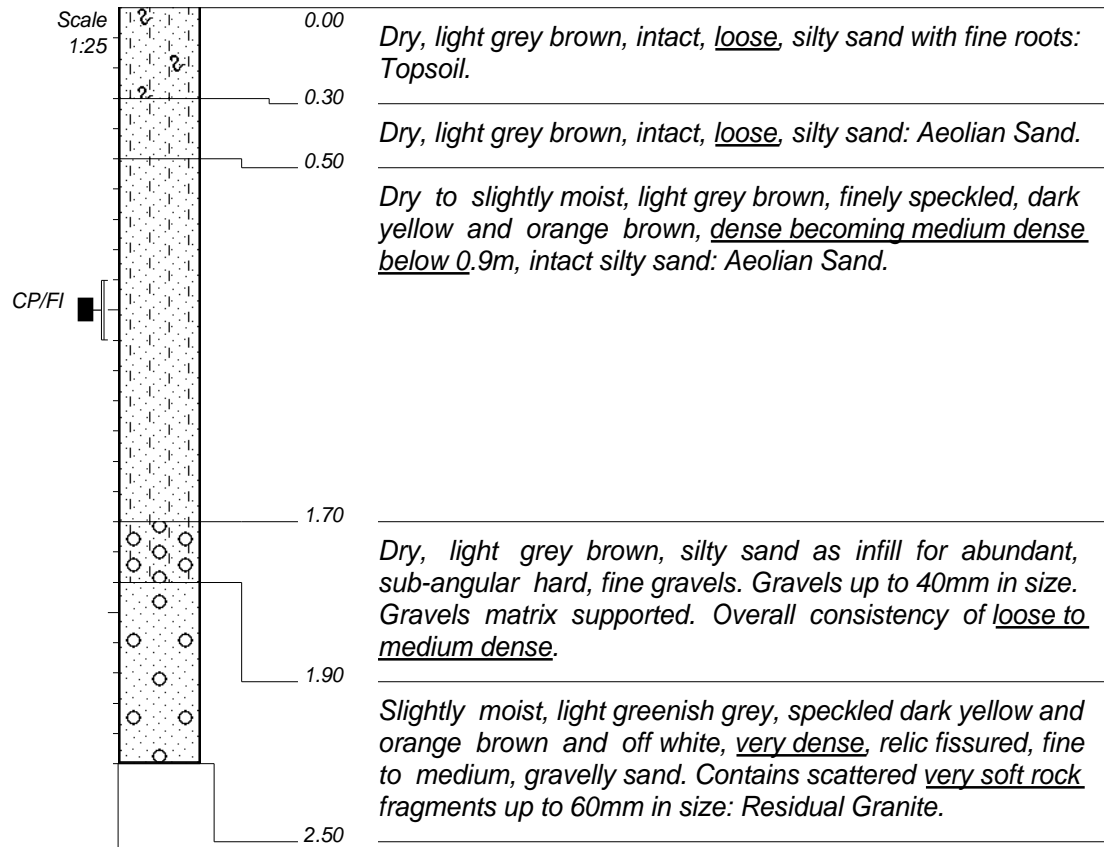
CONTRACTOR : Die Timmerman
MACHINE : JCB
DRILLED BY : David
PROFILED BY : M.C.

INCLINATION :
DIAM :
DATE : 04/09/2012
DATE :
DATE : 08/10/12 11:26
TEXT : ..\2012\10162--1.TXT

ELEVATION :
X-COORD : 2911541
Y-COORD : 0020675

HOLE No: KAL1-3

TYPE SET BY : Rev 1
SETUP FILE : STANDARD.SET



NOTES

- 1) Refusal of TLB @ 2.5m on very soft to soft rock granite
- 2) No water seepage observed
- 3) Undisturbed sample CP/FI 0.9--1.1m

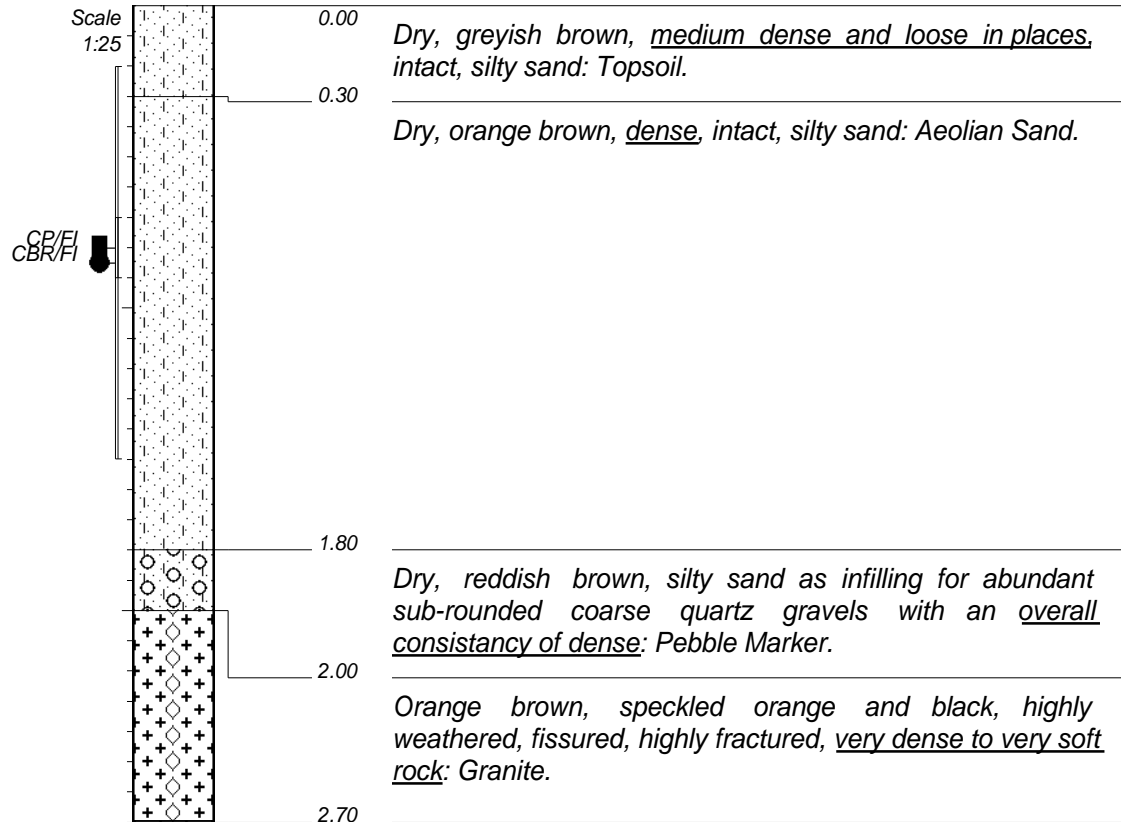
CONTRACTOR : Die Timmerman
MACHINE : JCB
DRILLED BY : David
PROFILED BY : M.C.

TYPE SET BY : Rev 1
SETUP FILE : STANDARD.SET

INCLINATION :
DIAM :
DATE : 04/09/2012
DATE :
DATE : 08/10/12 11:26
TEXT : ..\2012\10162--1.TXT

ELEVATION :
X-COORD : 2911569
Y-COORD : 0020661

HOLE No: **KAL1-4**



NOTES

- 1) Refusal of TLB @ 2.7m
- 2) No water seepage observed
- 3) Undisturbed sample CP/FI 0.7--0.9m
- 4) Disturbed sample CBR/FI 0.2--1.5m

CONTRACTOR : Die Timmerman
MACHINE : JCB
DRILLED BY : David
PROFILED BY : M.C.

INCLINATION :
DIAM :
DATE : 04/09/2012
DATE :
DATE : 08/10/12 11:26
TEXT : ..\2012\10162--1.TXT

ELEVATION :
X-COORD : 2911618
Y-COORD : 0020701

HOLE No: KAL1-5

TYPE SET BY : Rev 1
SETUP FILE : STANDARD.SET