

2012-01-30 RIM REC FAC: OBSERVATIONS AT ALPHA 1.

INTRODUCTION

In July 2011 Alpha one was in an advanced stage of being refurbished under a permit from SAHRA issued in November 2010. With the stripping of the plaster certain bricked up features from the original construction were clearly visible.

[Fig.1.]

It was decided to allow for the interpretation of the different building styles by placing a polycarbonate panel at the SW edge. A drawing was made by Howard Smith. [fig.2.]

Observations made on 30 January 2012 shows that the proposal by Howard Smith deviated considerably from the actual installation of the panel.

PRINCIPLES OF INTERPRETATION

Interpretation of the physical fabric should not be done in a manner inconsistent with generally accepted international practice. In particular such interpretation must ensure that deterioration of the fabric is not artificially accelerated.

OBSERVATIONS

The present polycarbonate and wooden framework is inconsistent with the above principle. The frame is sealed on all four sides.

Moisture from the brickwork is and will be retained behind the sealed framework.

[Fig.3,4,5]

The build up of moisture will lead to accelerated deterioration in the fabric which has been protected by plaster for more than 70 years.

The framework has not followed the accepted method provided by the Architects in consultation with the Heritage Consultant.

RECOMMENDATION

Alterations must be made to the framework to allow for the evaporation of any build up of moisture. Holes drilled into the polycarbonate in appropriate places may alleviate this build up.



Fig.1.

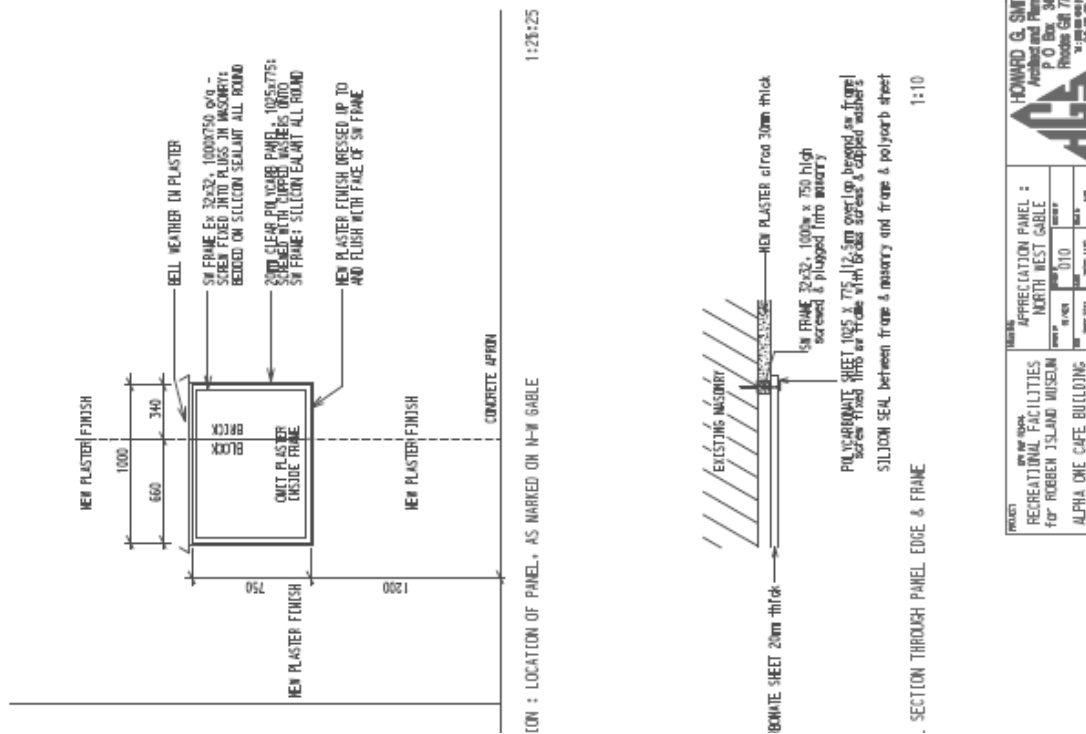


Fig.2.

Fig.3.



Image of interpretation panel.



Fig.4. Image showing moisture build up.



Fig.5. Image showing moisture build up.