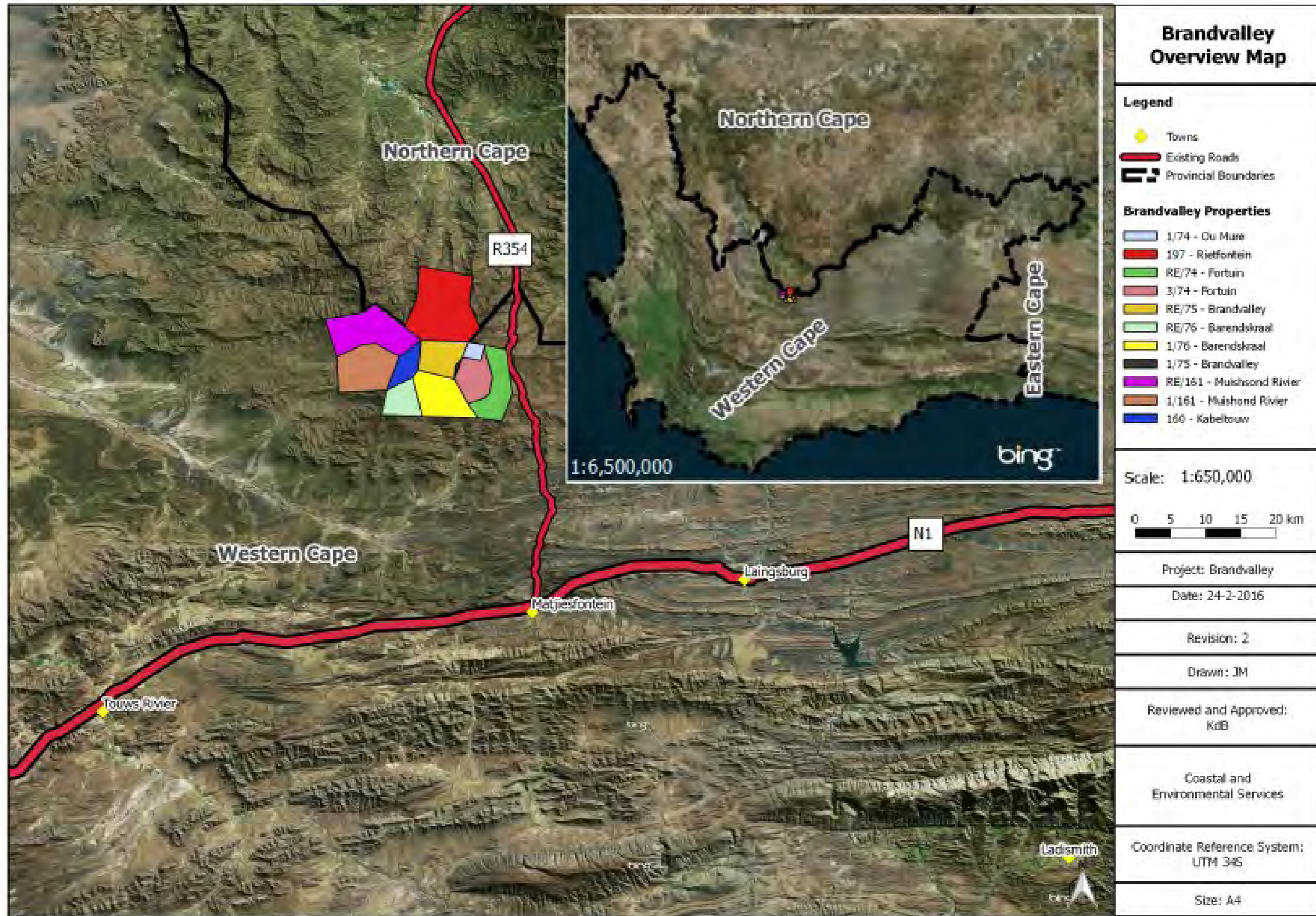
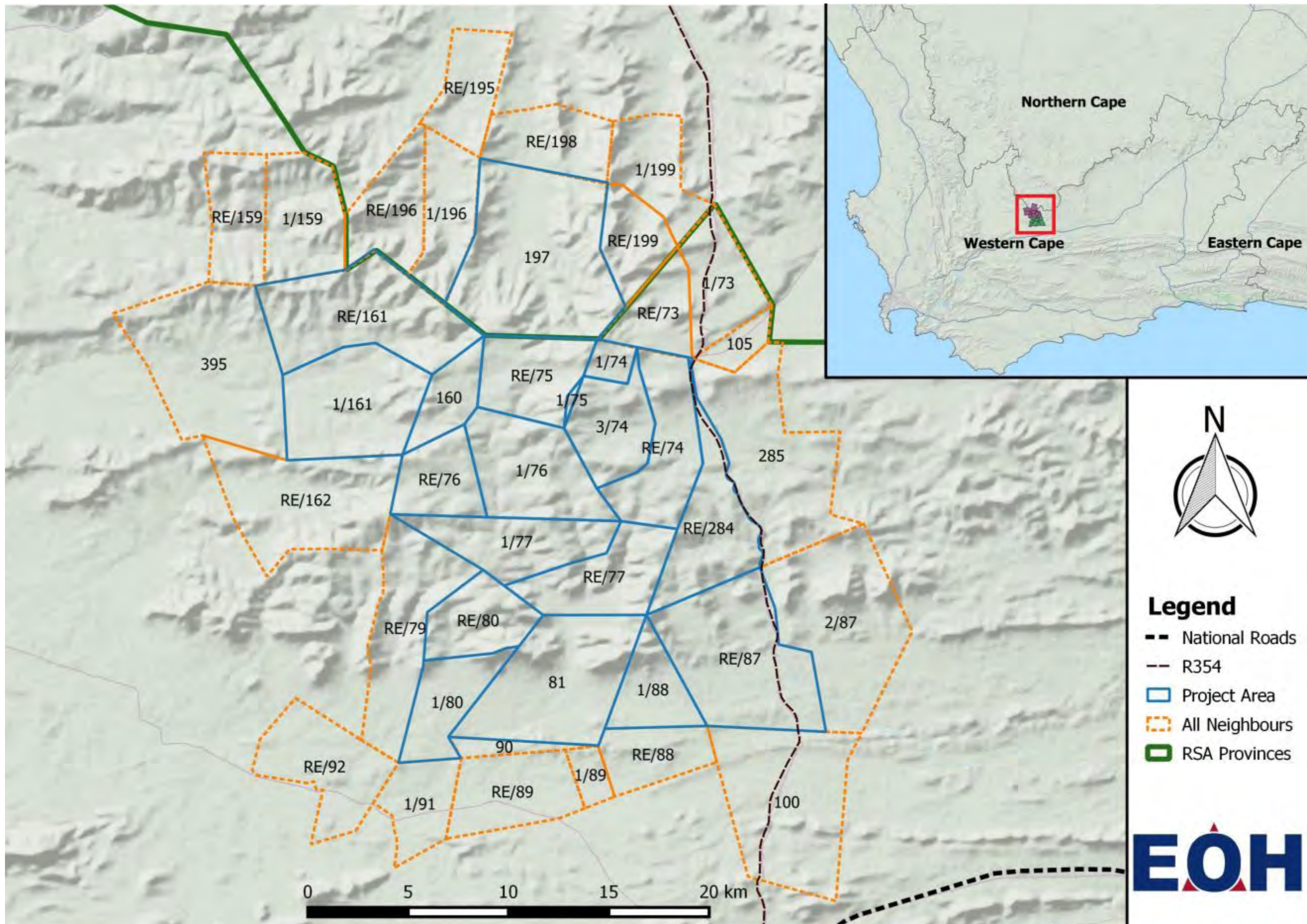


APPENDIX F: PROJECT MAPS AND COORDINATES

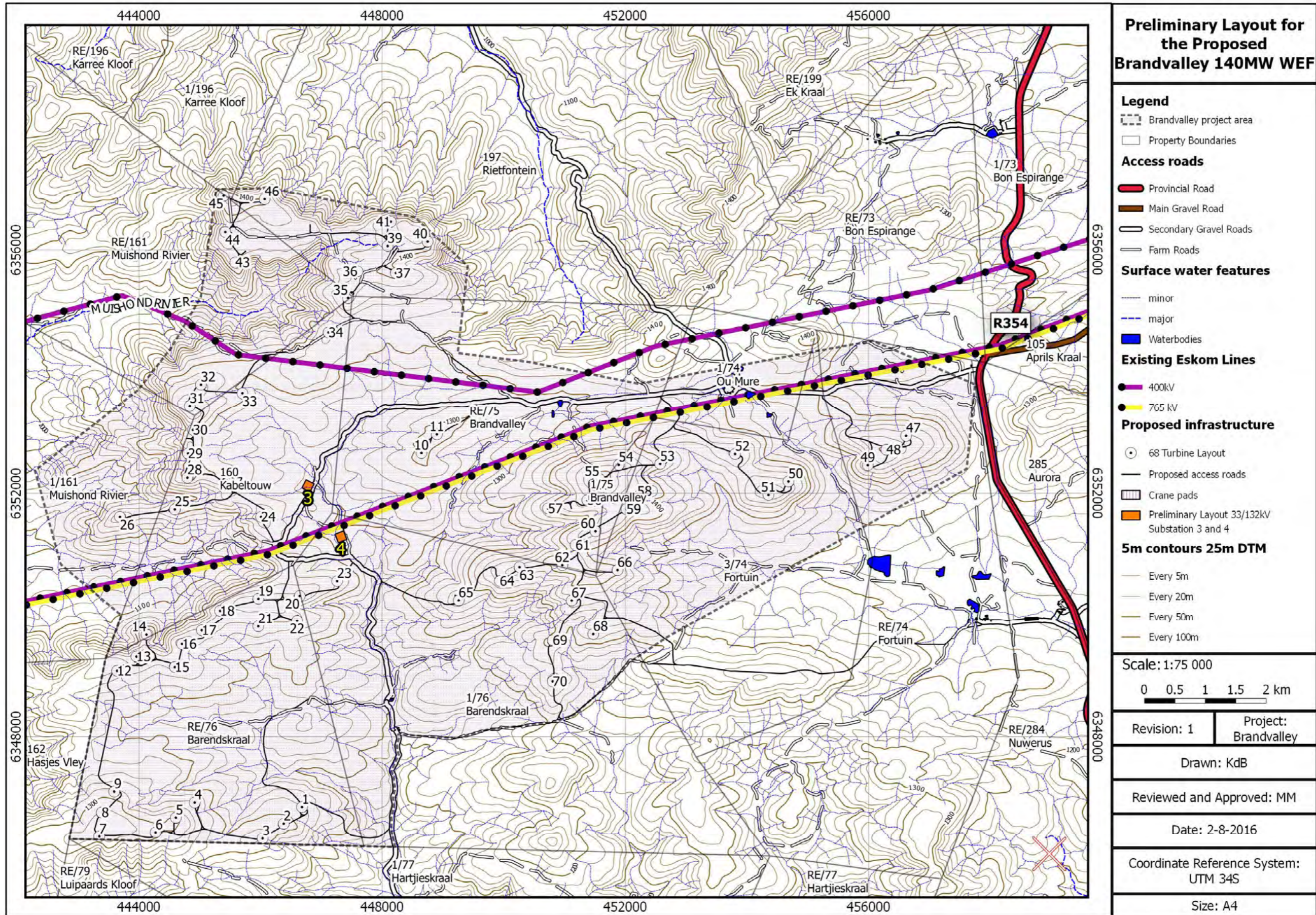
F-1: PROJECT MAPS



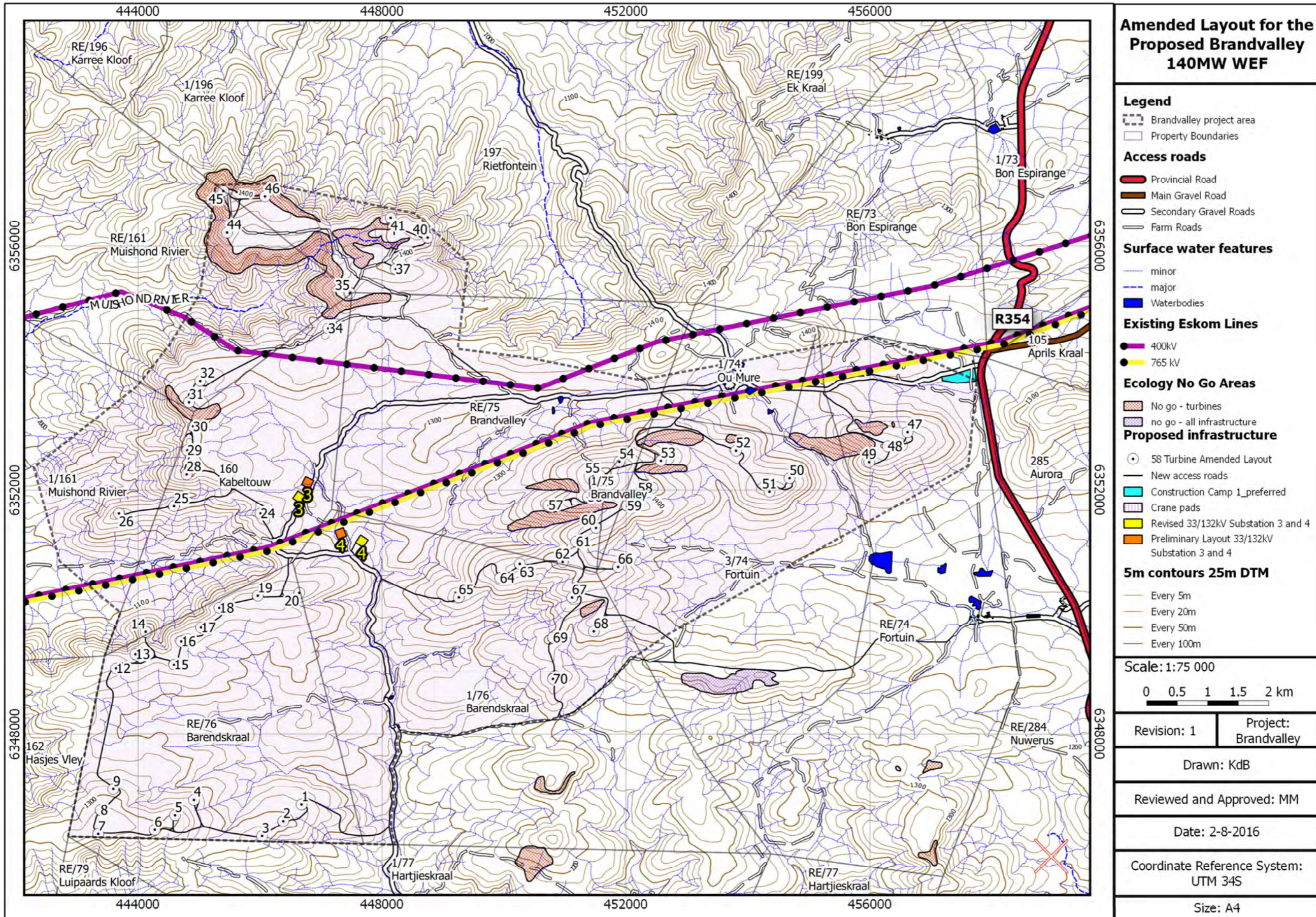
Appendix F Figure 1: Proposed Location for the Brandvalley Wind Energy Facility.



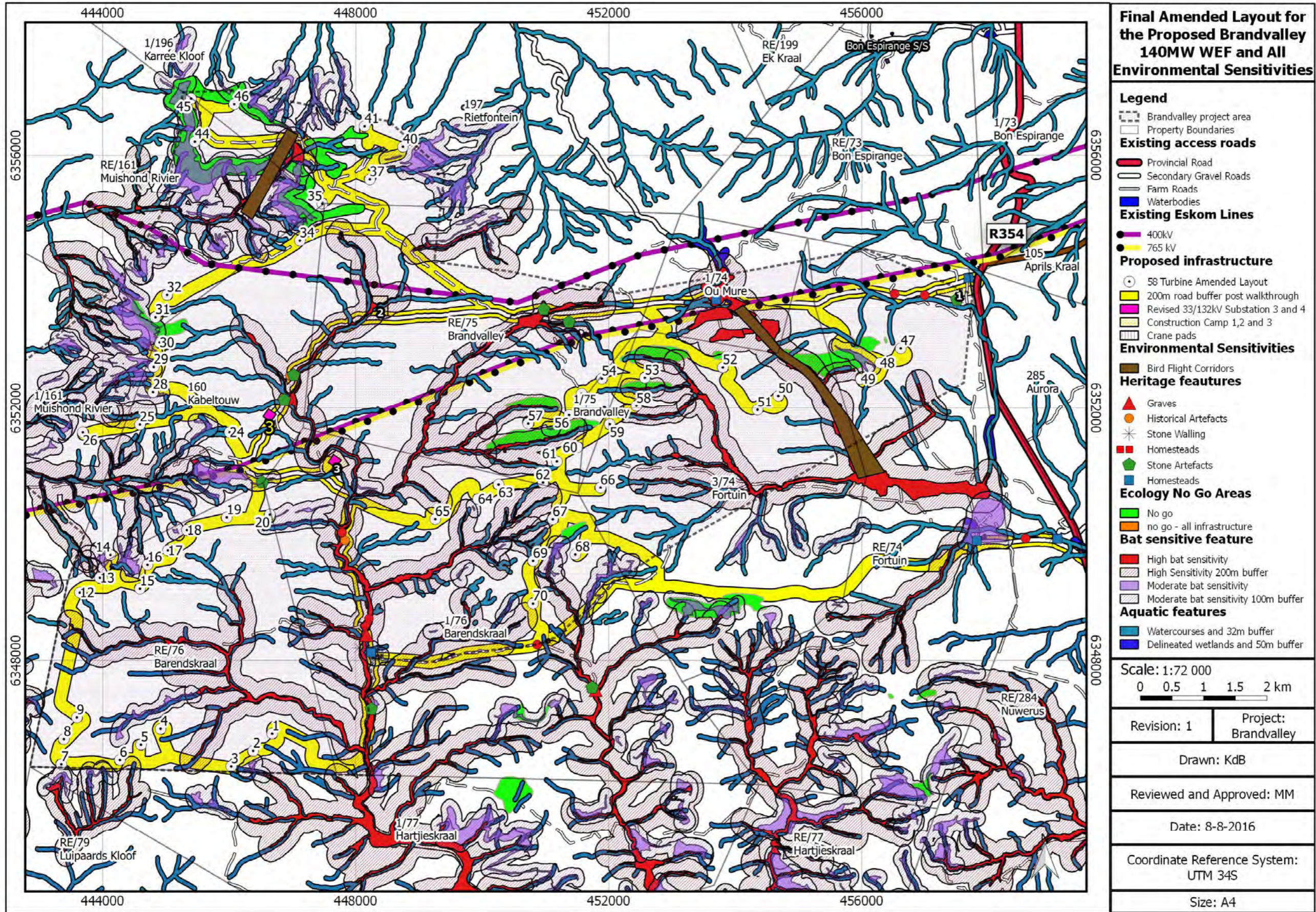
Appendix F Figure 2: Proposed property portions for Brandvalley and Rietkloof Wind Energy Facilities (WEF).



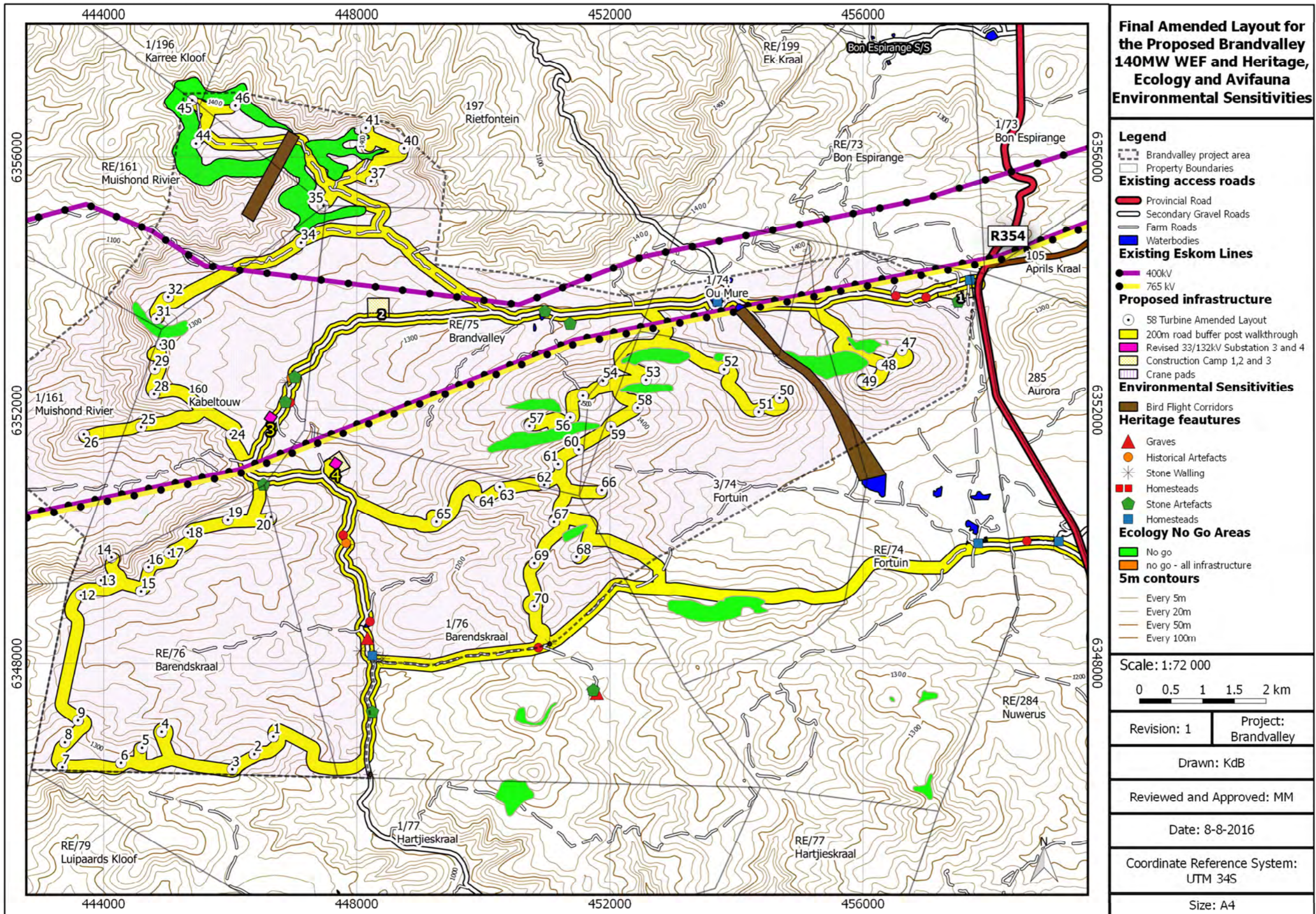
Appendix F Figure 3: Proposed preliminary layout including 68 turbine positions for the Brandvalley WEF.



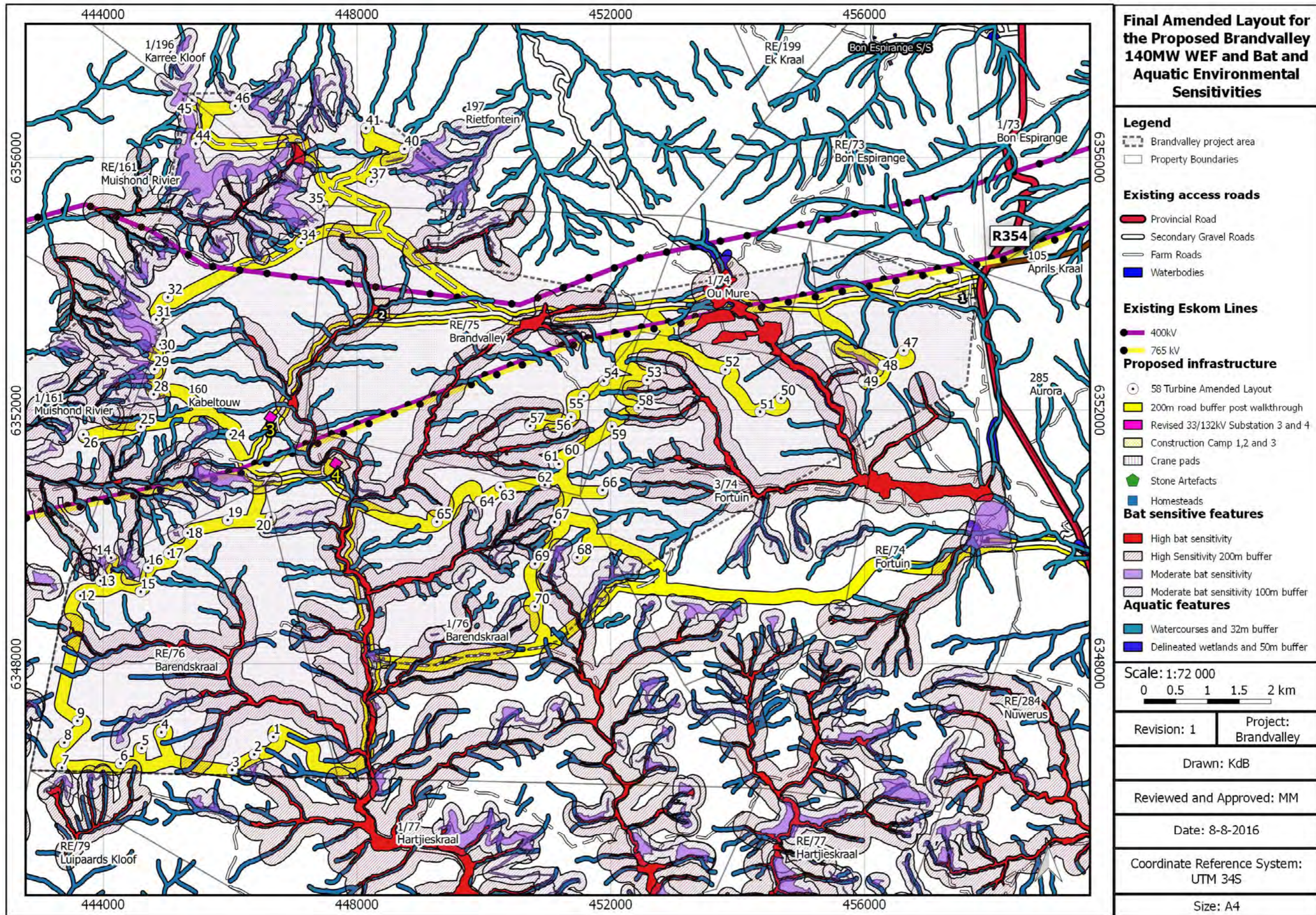
Appendix F Figure 4: Amended layout including 58 turbine positions and reduced access roads



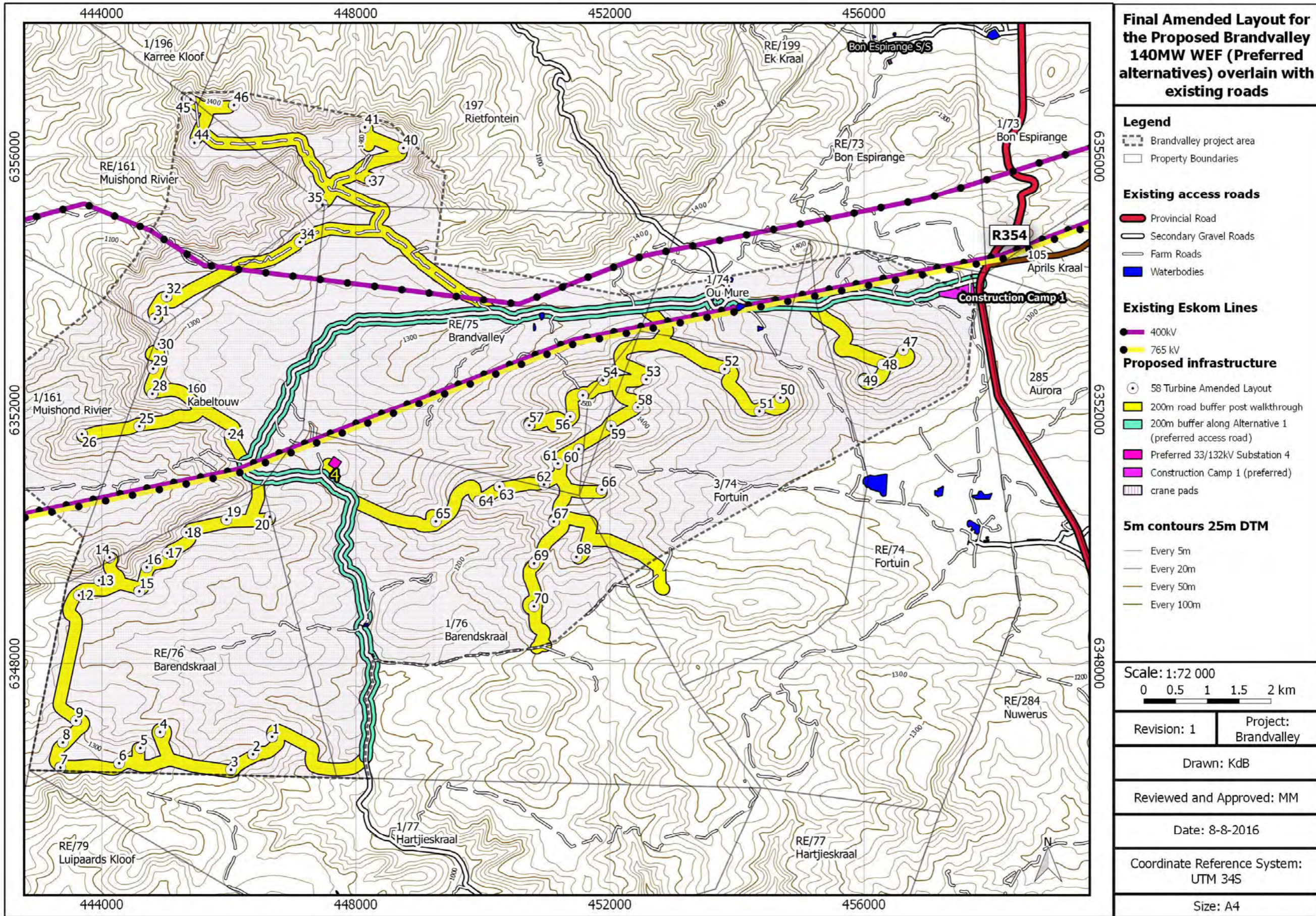
Appendix F Figure 5: Amended layout and all environmental sensitivities.



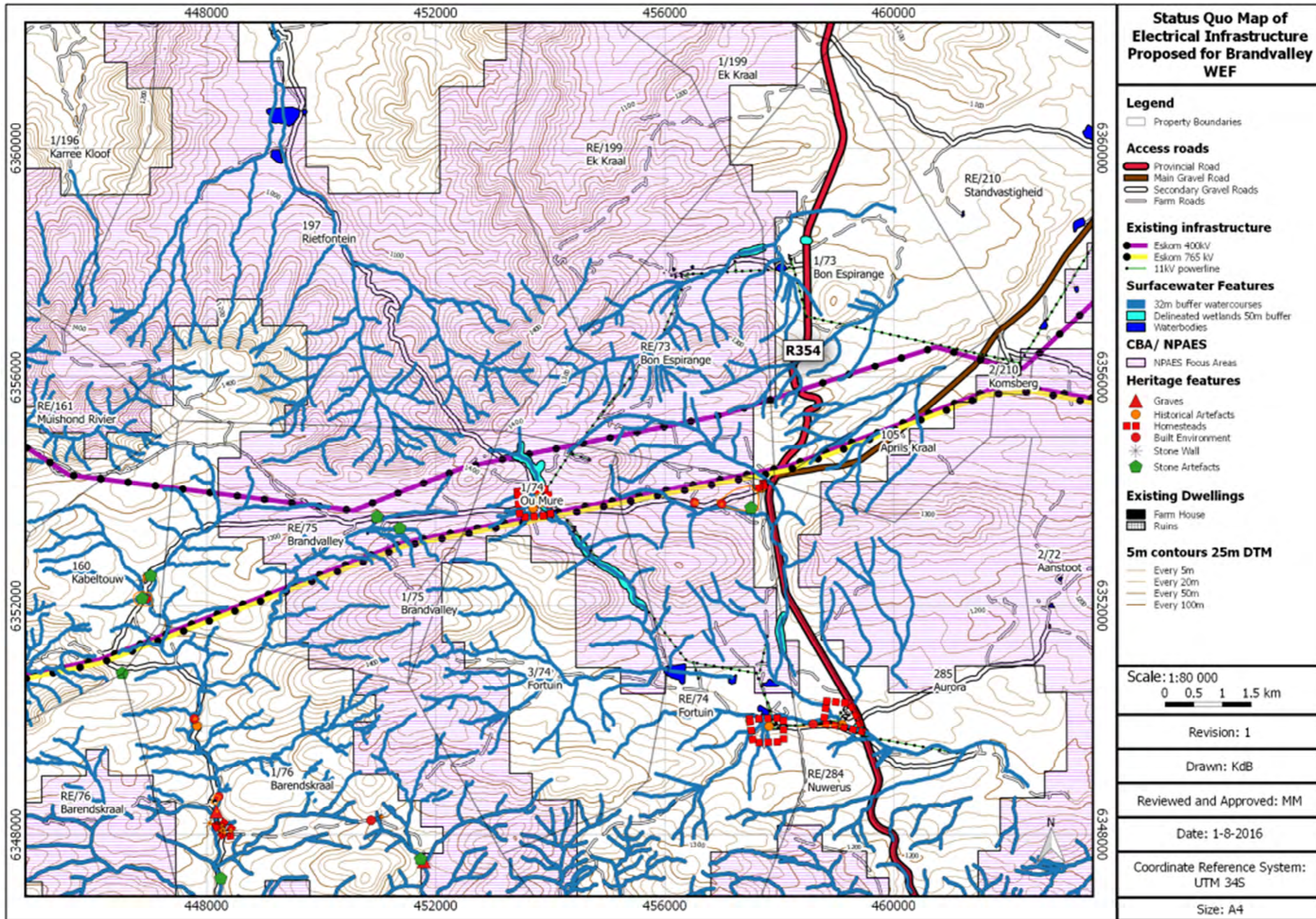
Appendix F Figure 6: Amended layout and Heritage, Ecology and Avifaunal sensitivities.



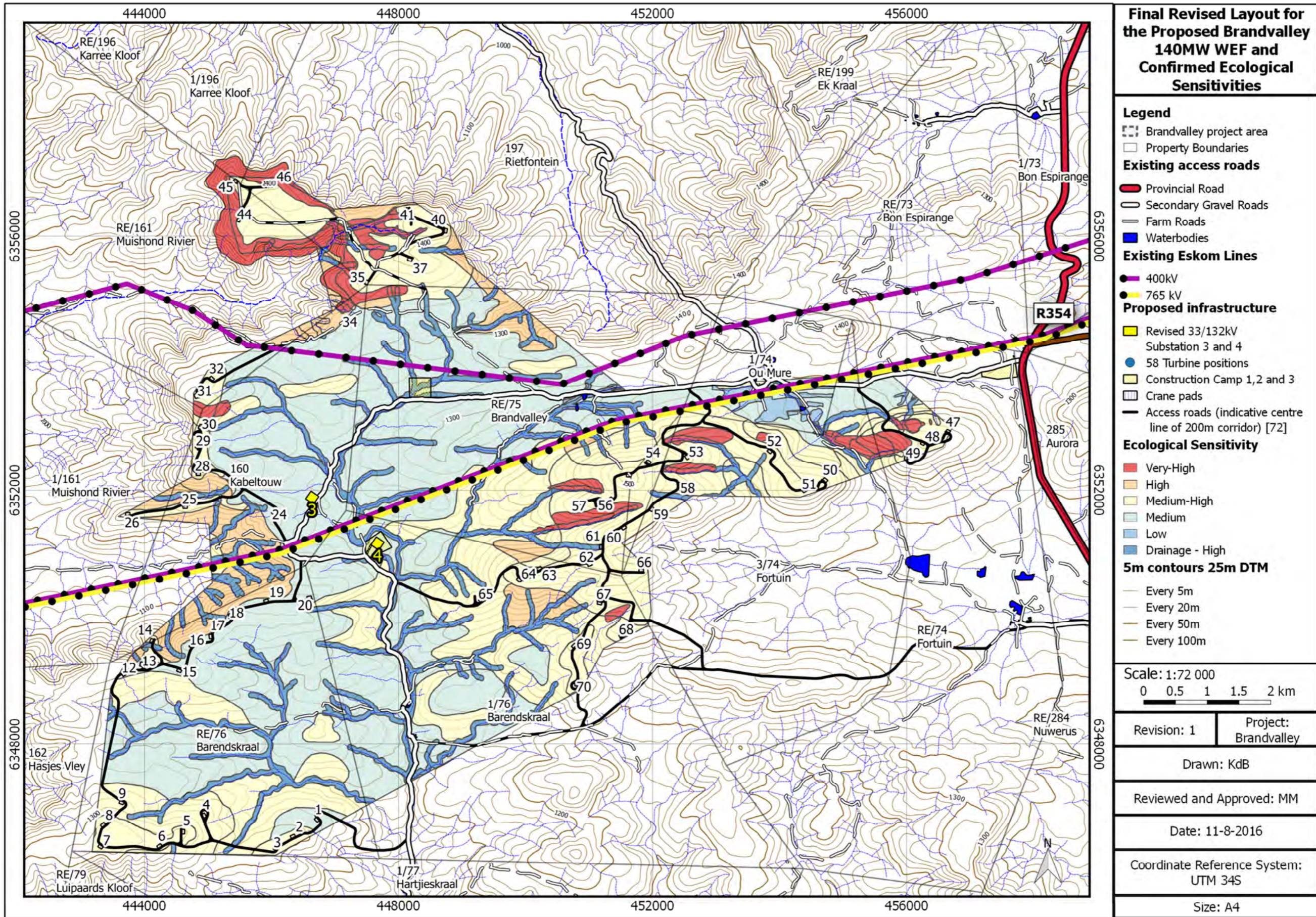
Appendix F Figure 7: Amended layout and Bat and Aquatic sensitivities.



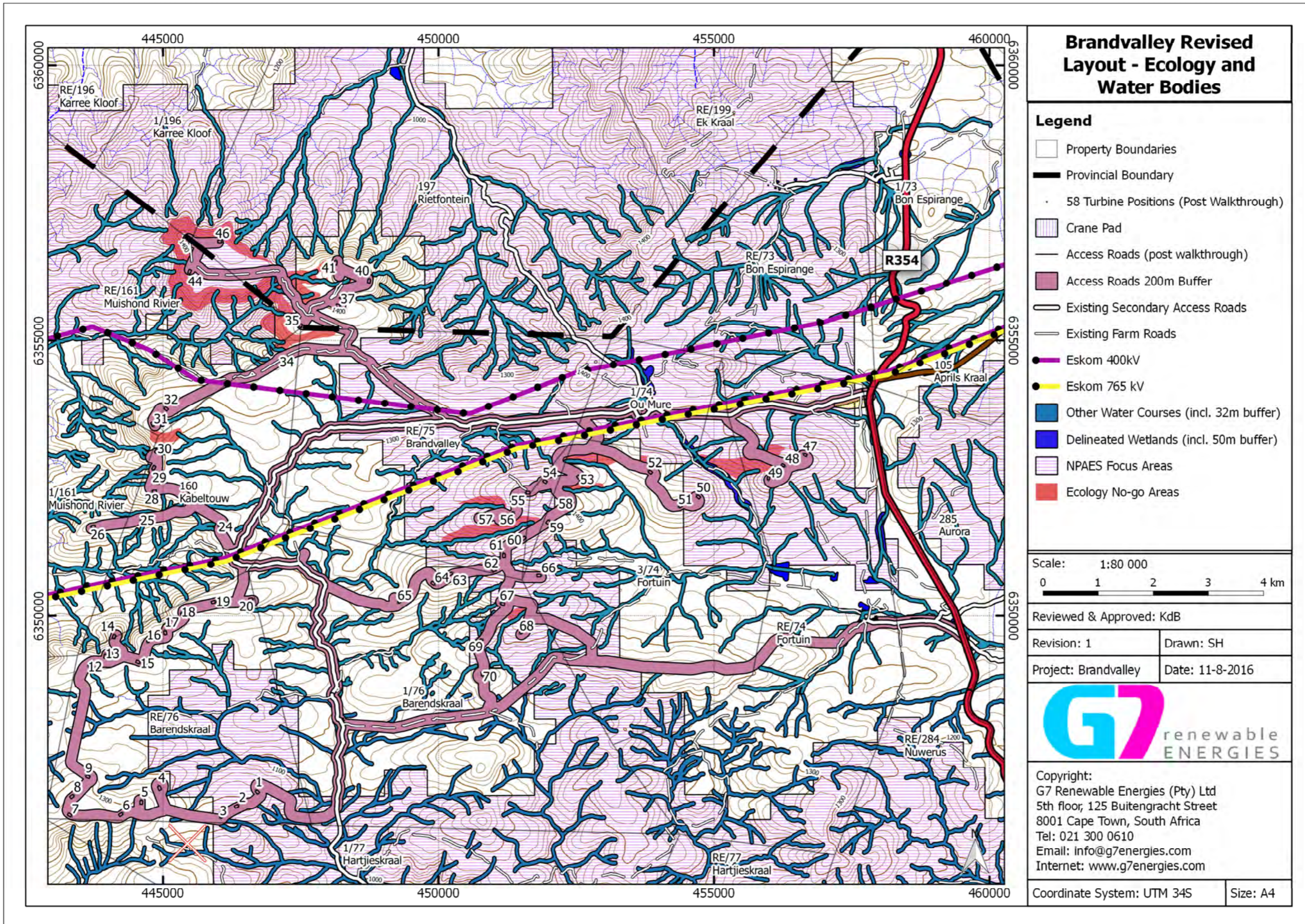
Appendix F Figure 8: Amended layout and Preferred Alternative.



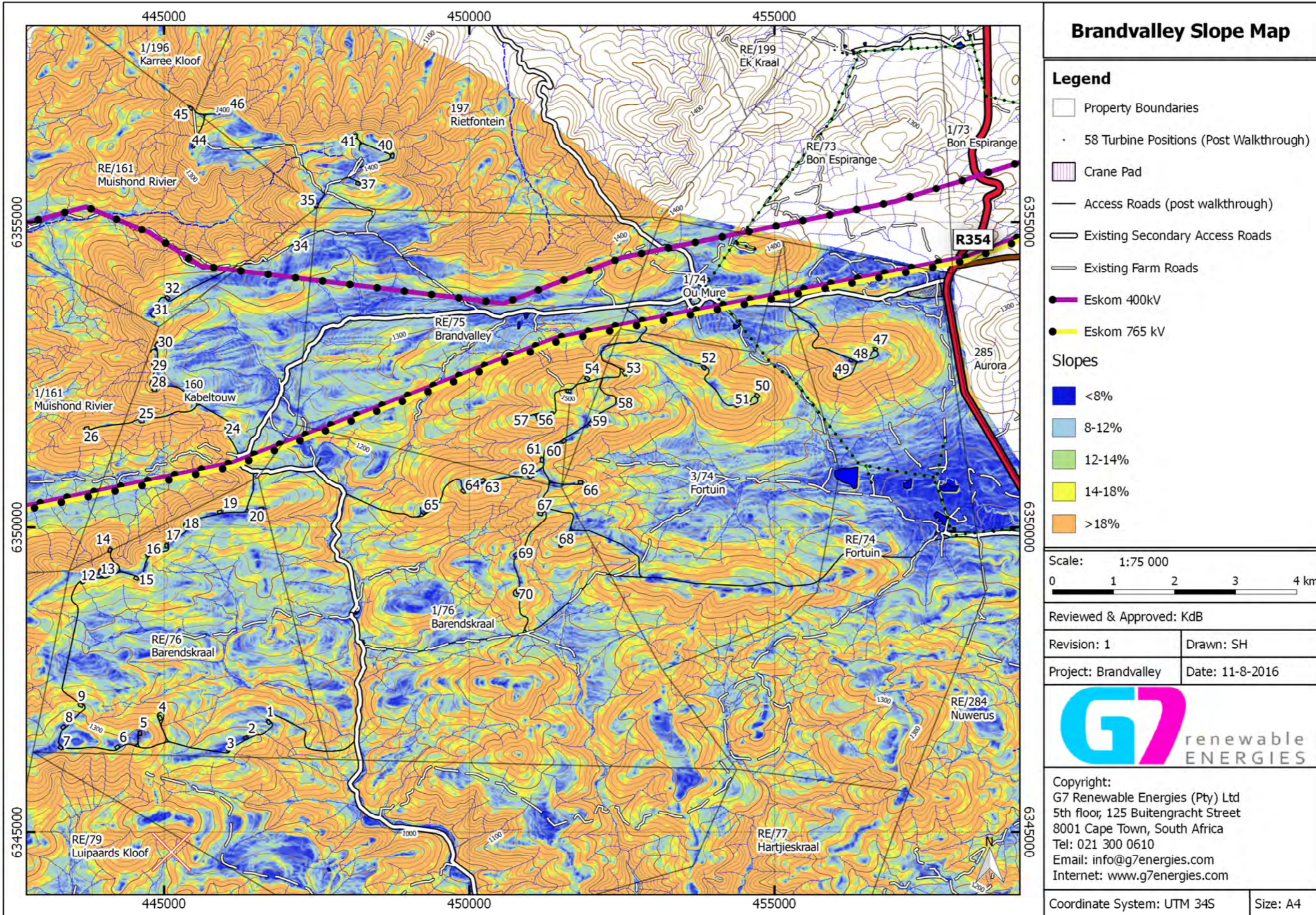
Appendix F Figure 9: Status Quo Map / Regional Map



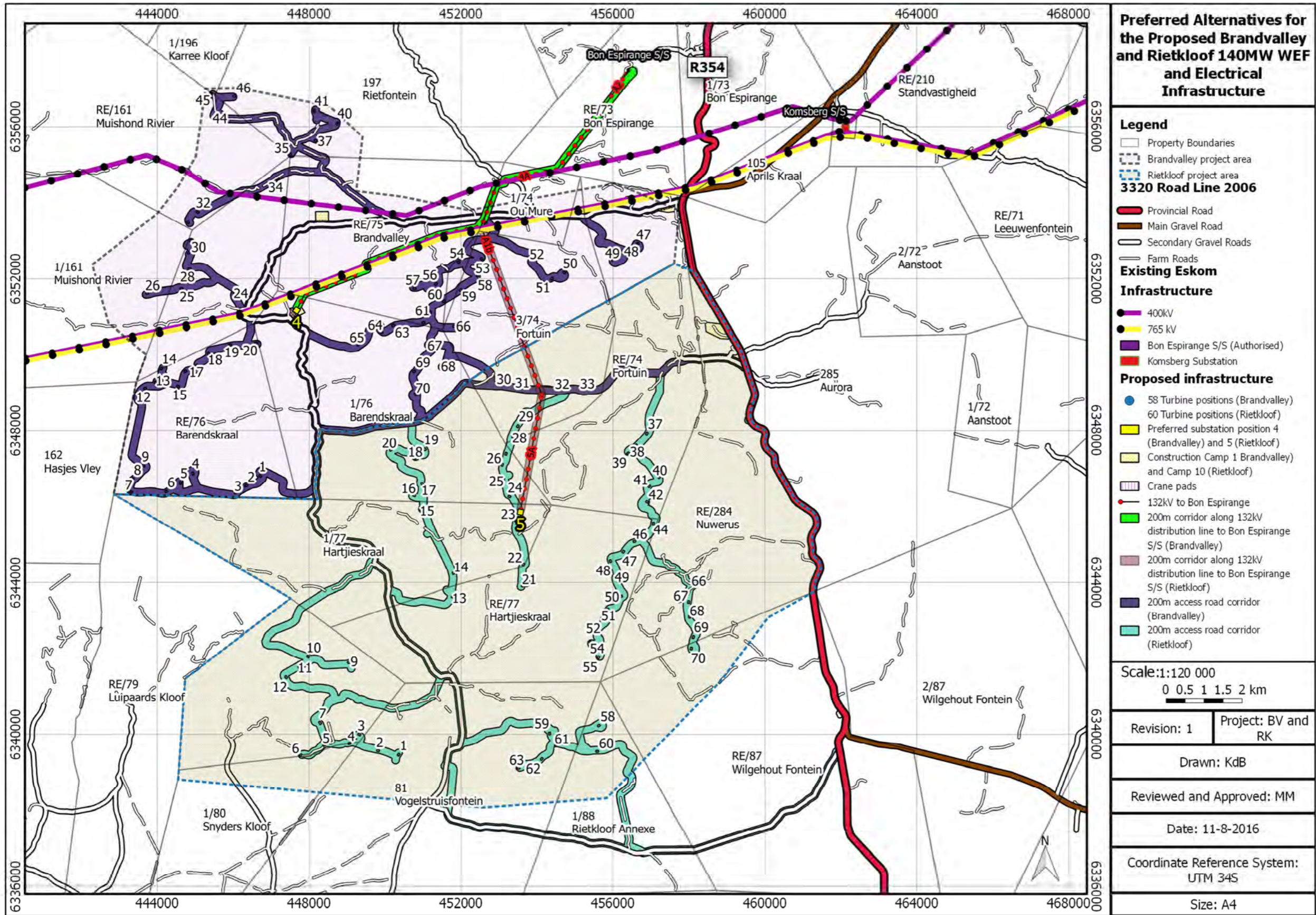
Appendix F Figure 10: Revised Brandvalley WEF layout and confirmed ecological sensitivity map



Appendix F Figure 11: Revised Brandvalley WEF layout and ecological and aquatic features.



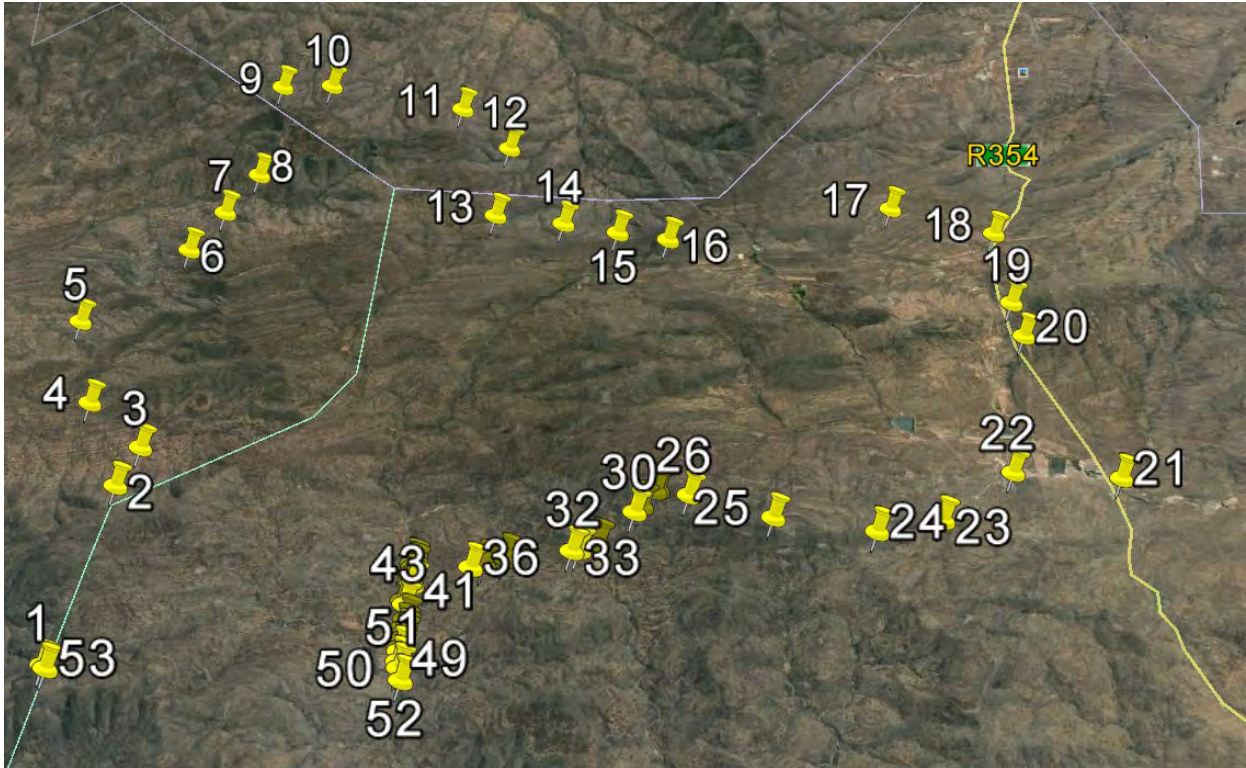
Appendix F Figure 12: Slope map



Appendix F Figure 13: Overview map showing wind farm and electrical components of both Brandvalley and Rietkloof

F-2: PROJECT COORDINATES

Corner coordinate points for the proposed development site as well as the start, middle and end point of all linear activities (Decimal Degree Format using the WGS 84 Spheroid)



Volume 1: Environmental Impact Assessment Report – Appendices

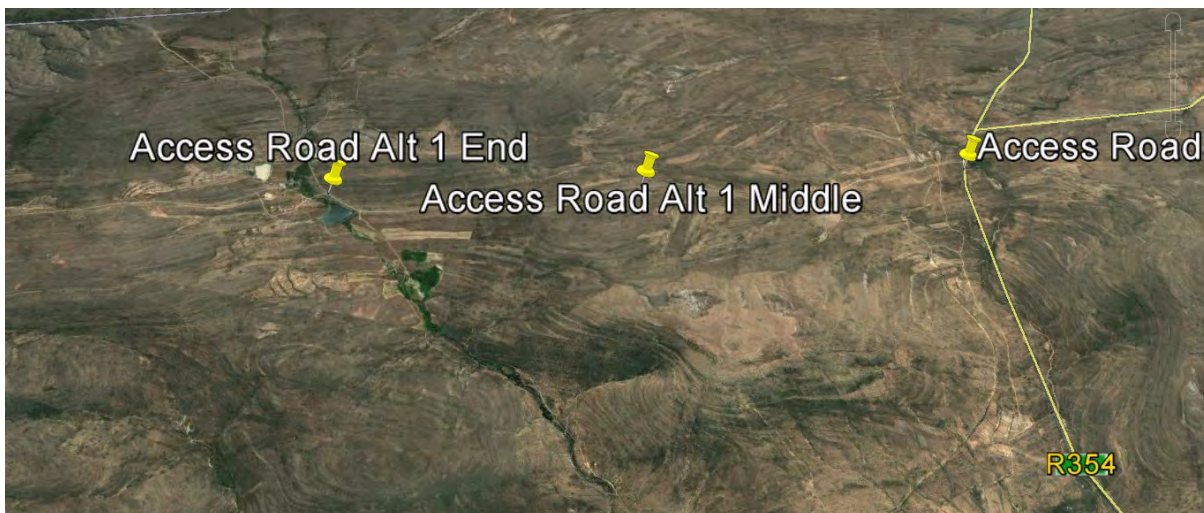
shap eid	x	y	shap eid	x	y	shap eid	x	y
1	20.388092 422	- 33.0200948 155	22	20.548137 1131	- 32.991035 6994	43	20.445229 7488	- 33.0108 246563
2	20.394674 1041	- 32.9934163 897	23	20.535301 2145	- 32.998687 7725	44	20.445518 8293	- 33.0129 793403
3	20.397508 5733	- 32.9870244 682	24	20.524014 8132	- 33.000570 5318	45	20.445137 3318	- 33.0142 788624
4	20.386874 7473	- 32.9793772 791	25	20.506627 7779	- 32.998583 4046	46	20.445329 7969	- 33.0150 601015
5	20.382440 3516	- 32.9654811 584	26	20.492437 4497	- 32.995165 6199	47	20.445313 2547	- 33.0156 562935
6	20.400699 7002	- 32.9535621 447	27	20.487123 2739	- 32.994274 7911	48	20.444844 9827	- 33.0170 480603
7	20.406641 5501	- 32.9472231 874	28	20.486662 5425	- 32.994420 1449	49	20.444911 3346	- 33.0175 124487
8	20.411799 0489	- 32.9398597 028	29	20.484427 5747	- 32.996633 6123	50	20.444813 4317	- 33.0189 389034
9	20.414621 6461	- 32.9238705 966	30	20.483260 4659	- 32.997540 8174	51	20.445023 0173	- 33.0198 673867
10	20.424111 408	- 32.9237489 888	31	20.477097 4805	- 33.002120 7126	52	20.445472 026	- 33.0215 659129
11	20.449536 3611	- 32.9282520 478	32	20.473999 7328	- 33.003067 1046	53	20.388616 6799	- 33.0205 298901
12	20.458792 468	- 32.9354776 536	33	20.472802 6764	- 33.003271 1663			
13	20.456952 5875	- 32.9483520 676	34	20.461730 5457	- 33.004249 8146			
14	20.469539 7934	- 32.9497299 172	35	20.458165 5563	- 33.005131 3354			
15	20.479557 1983	- 32.9514441 16	36	20.455927 446	- 33.005503 829			
16	20.488805 2133	- 32.9530258 848	37	20.446079 9074	- 33.004853 8586			
17	20.529963 4882	- 32.9468329 515	38	20.446247 8205	- 33.005474 5986			
18	20.548827	-	39	20.445879	-			

	8673	32.9509371 871		9308	33.006407 2776			
19	20.550663 3565	- 32.9633741 391	40	20.445944 8238	- 33.007164 1568			
20	20.552274 1704	- 32.9690220 086	41	20.446215 5249	- 33.007870 3526			
21	20.566728 9009	- 32.9917885 757	42	20.444860 1439	- 33.010313 522			

Access road alternative 1 (preferred access road)- please note that a corridor of 200m are proposed.

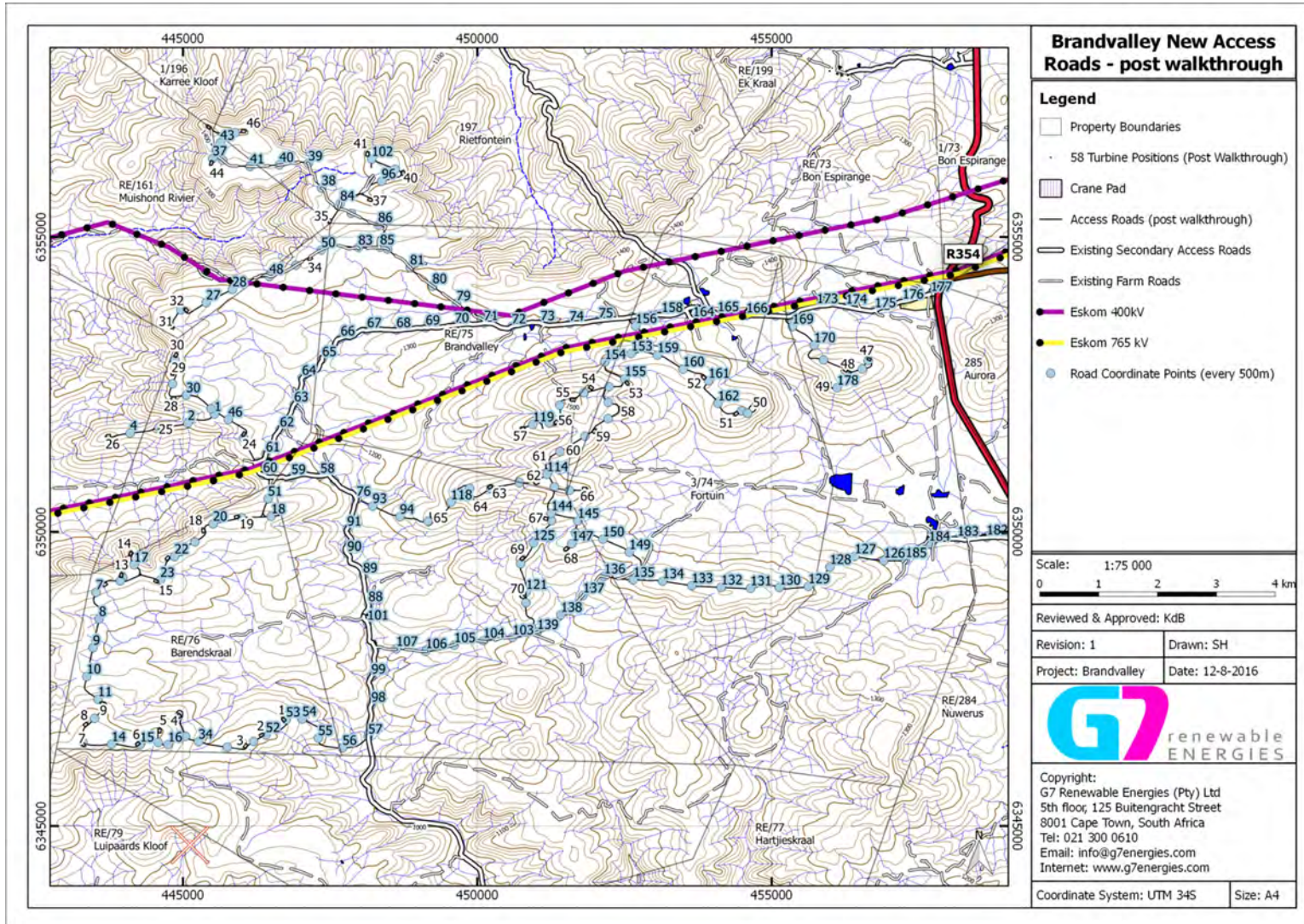
Name	Description	X	Y
Access Road Alt 1	End	20.507500621056053	-32.953524117926719
Access Road Alt 1	Start	20.548798029535451	-32.951613248938088
Access Road Alt 1	Middle	20.527570469971959	-32.952920148283781
Access Road Alt 2	Start	20.542633118620849	-32.991904163098198
Access Road Alt 2	End	20.446139649126881	-33.004885764894581
Access Road Alt 2	Middle	20.512827019971613	-32.996123133114118
Access Road Alt 2	Start	20.56163330699999	-32.98860031299999
Access Road Alt 2	End	20.542610882391134	-32.99191383879112
Access Road Alt 2	Middle	20.55363221399999	-32.9888012
Access Road Alt 2	Start	20.566820453920563	-32.991244161358154
Access Road Alt 2	End	20.56163330699999	-32.98860031299999
Access Road Alt 2	Middle	20.56478038199999	-32.989904704
Access Road Alt 2	Middle	20.56622696599999	-32.990860174
Access Road Alt 2	Start	20.565491866733421	-32.991116390587649
Access Road Alt 2	End	20.566449165445377	-32.990318178586691

See Google Earth Imagery below for both access road alternatives.





Coordinates of revised Access Roads



Appendix F Figure 14: Revised Access Roads Post-Walkthrough

The numbers in the map correspond to the numbers in the table below.

Branvalley New Access Road - Coordinate List

ID	Longitude	Latitude
1	445532	6351992
2	445082	6351838
3	444590	6351765
4	444103	6351666
5	443979	6349226
6	443936	6349166
7	443525	6348971
8	443576	6348519
9	443471	6348030
10	443367	6347541
11	443557	6347156
12	443500	6346832
13	443301	6346428
14	443788	6346391
15	444271	6346385
16	444747	6346385
17	444170	6349440
18	446499	6350264
19	446000	6350239
20	445511	6350135
21	445202	6349829
22	444856	6349579
23	444616	6349182
24	444580	6346421
25	444865	6352910
26	444966	6353762
27	445394	6353885
28	445840	6354110
29	445477	6352085
30	445056	6352313
31	444823	6352506
32	444910	6346853
33	445045	6346527
34	445265	6346434
35	445755	6346340
36	446200	6346438
37	445504	6356334
38	447354	6355832
39	447128	6356250
40	446638	6356226
41	446139	6356199
42	445673	6356308
43	445634	6356602
44	446273	6351177
45	446031	6351586
46	445770	6351900
47	445884	6356774
48	446467	6354327
49	446921	6354522
50	447349	6354779
51	446445	6350563
52	446408	6346547
53	446752	6346810
54	447027	6346820

Branvalley New Access Road - Coordinate List

55	447299	6346495
56	447710	6346330
57	448146	6346522
58	447335	6350943
59	446843	6350925
60	446362	6350956
61	446408	6351307
62	446647	6351730
63	446890	6352157
64	447023	6352607
65	447366	6352925
66	447679	6353277
67	448129	6353416
68	448627	6353417
69	449123	6353459
70	449616	6353499
71	450112	6353537
72	450584	6353480
73	451073	6353535
74	451566	6353529
75	452062	6353583
76	447948	6350561
77	447573	6350862
78	450064	6353609
79	449644	6353873
80	449239	6354165
81	448858	6354483
82	448476	6354795
83	447980	6354820
84	447672	6355571
85	448349	6354826
86	448317	6355205
87	447859	6355403
88	448151	6348771
89	448060	6349259
90	447792	6349628
91	447790	6350053
92	447955	6350562
93	448222	6350439
94	448685	6350258
95	449169	6350175
96	448374	6355947
97	448157	6346578
98	448199	6347064
99	448201	6347540
100	448268	6348008
101	448131	6348456
102	448206	6356325
103	450597	6348204
104	450099	6348152
105	449607	6348074
106	449121	6347972
107	448623	6348011
108	448603	6356153
109	449160	6350180

Branvalley New Access Road - Coordinate List

110	452224	6352191
111	452219	6351915
112	451828	6351616
113	451402	6351356
114	451181	6350967
115	450715	6350833
116	450228	6350733
117	449869	6350741
118	449550	6350503
119	450940	6351816
120	450734	6349460
121	450827	6348977
122	450824	6348794
123	450921	6348373
124	451260	6350190
125	450951	6349813
126	456903	6349511
127	456408	6349582
128	455986	6349403
129	455621	6349074
130	455128	6349053
131	454638	6349039
132	454139	6349055
133	453640	6349086
134	453146	6349161
135	452648	6349186
136	452152	6349243
137	451794	6348919
138	451418	6348590
139	451016	6348297
140	451807	6352356
141	451398	6352145
142	451220	6351840
143	451306	6350763
144	451254	6350313
145	451705	6350185
146	451565	6350705
147	451605	6349801
148	452785	6349254
149	452580	6349656
150	452133	6349874
151	451664	6349983
152	452237	6352457
153	452612	6353019
154	452163	6352877
155	452504	6352590
156	452687	6353487
157	452630	6353644
158	453127	6353676
159	453058	6352993
160	453494	6352756
161	453926	6352558
162	454087	6352174
163	454484	6352046
164	453661	6353603

Branvalley New Access Road - Coordinate List

165	454080	6353688
166	454568	6353667
167	455068	6353659
168	454589	6352008
169	455348	6353479
170	455719	6353163
171	455879	6352913
172	455305	6353649
173	455763	6353826
174	456258	6353817
175	456748	6353756
176	457218	6353902
177	457700	6354031
178	456109	6352438
179	456536	6352758
180	456637	6352902
181	459134	6349846
182	458648	6349904
183	458153	6349882
184	457666	6349796
185	457270	6349518
186	457269	6349517