

# APPENDIX F: COPIES OF CORRESPONDENCE SENT TO I&APS

## Letter 1: Notice of the Scoping and EIA Process

PO Box 27688 Greenacres 6057  
120 Diaz Road Adcockvale, PE 6001  
Phone 041 374 8426 Fax 041 373 2002  
Email sandy@publicprocess.co.za  
Ck 97/32984/23 VAT 44601 68273

10 February 2012

«Title» «First\_Name» «Surname»  
«Organisation»  
«Address1»  
«Address2»  
«City»  
«Code»

Dear «Title» «Surname»

### **RE: Notice of Scoping and Environmental Impact Assessment for the Expansion of Agriculture on the River Bend Citrus Farm, near Addo, Sundays River Valley Municipality**

The applicant, San Miguel Fruits SA (Pty) Ltd, is proposing the expansion of existing citrus cultivation operations on the farm known as River Bend Citrus Farm near Addo, Sundays River Valley Municipality. The project is proposed to take place on three properties which form part of the existing farm, namely; Remainder of Farm 82 Wolve Kop (~908 ha), Portion 1 of Farm 77 Wellshaven (~22ha) and Portion 3 of Farm 77 Honeyvale (~128ha); approximately 1058 hectares in combined extent. Pending the outcome of the specialist studies the applicant proposes to clear a minimum of approximately 300 ha for citrus cultivation.

In terms of the National Environmental Management Act, 1998 (Act No. 107 of 1998) as amended ("NEMAA") and the NEMA EIA regulations, 2010, GN R 543, 544, 545 and 546 published in Government Gazette 33306 on the 2 August 2010 (as amended), the project requires scoping and environmental assessment because it includes, amongst others, the following listed activity in GN R 545:

#### **16. The physical alteration of virgin soil to agriculture, or afforestation for the purposes of commercial tree, timber or wood production of 100 hectares or more.**

Other listed activities triggered by the project are:

**GN R544:** Listing Notice 1 Activities: 11.(iv); 18. (i) and 42

**GN R546:** Listing Notice 3 Activities: 2.(a) iii (dd) & (ff); 4.(a) ii (ee) & (gg); 12.(a); 13.(a) & (c) ii (ff); 14.(a) I; 23.(a) ii (gg)

Public Process Consultants has been appointed by San Miguel Fruits SA (Pty) Ltd as the independent Environmental Assessment Practitioner (EAP) to undertake the Scoping and EIA process for this project.

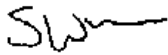


You have been identified as an interested and/or affected party (I&AP) for the above project and have been included on the project I&AP database. In order to ensure that any issues and or concerns you may have are included in the **Draft Scoping Report**, you are kindly requested to submit any comments you may have to the environmental assessment practitioner indicated above, within 30 days of this notification (by no later than **12 March 2012**).

To assist you in the submission of your comments we have enclosed with this correspondence a **Background Information Document and Locality Map** as well as a **Comment Form**. Further project information can be accessed on the website: [www.publicprocess.co.za](http://www.publicprocess.co.za)

We look forward to your input and participation in this process. Should you have any queries contact Sandy Wren or Paul-Pierre Steyn using the contact details provided above.

Yours sincerely



**SANDY WREN**  
**EIA PROJECT LEADER**

## Comment form

### SCOPING PROCESS

#### REGISTRATION AND COMMENT FORM

#### Scoping and Environmental Impact Assessment

**Applicant: San Miguel Fruits SA (Pty) Ltd**

San Miguel Fruits SA (Pty) Ltd (the Applicant) proposes to expand existing agricultural activities on the River Bend Citrus Farm, near Addo, Sundays River Valley Municipality. The properties proposed for expansion are, the Remainder of Farm 82 Wolve Kop, Portion 1 of Farm 77 Wellshaven and Portion 3 of Farm 77 Honeyvale approximately 1058 hectares in combined extent

**Primary Listed Activity:** GN R 545 Activity No 16.

#### Return Completed Reply Form to:

*Public Process Consultants, PO Box 27688, Greenacres 6057*

*Phone: 041 – 374 8426 or Fax 041-373 2002 or Email [sandy@publicprocess.co.za](mailto:sandy@publicprocess.co.za)*

#### Complete all Relevant Sections Below and Return By: 12 March 2012

Please provide your full contact details:

FIRST NAME:	SURNAME:
ORGANISATION:	DESIGNATION:
POSTAL ADDRESS:	
CODE:	
PHONE:	FAX:
CELL:	EMAIL:

Would you like to register as an interested and affected party? (please tick the appropriate box)

**NOTE:** You are required to register as an I&AP in order to receive further correspondence regarding the EIA process.

YES

NO

Please clearly state any interest you may have in the project and/or list your issues and comments or questions you may have (use additional pages if required)

*Registration and comment form for Issues and Concerns*

## Background Information Document

### **SCOPING AND ENVIRONMENTAL IMPACT ASSESSMENT EXPANSION OF EXISTING AGRICULTURE ON RIVER BEND CITRUS FARM**

**REMAINDER OF FARM 82 WOLVE KOP, PORTION 1 OF FARM 77  
WELLSHAVEN AND PORTION 3 OF FARM 77 HONEYVALE  
NEAR ADDO, SUNDAYS RIVER VALLEY MUNICIPALITY**

**APPLICANT: SAN MIGUEL FRUITS SA (Pty) Ltd**

**BACKGROUND INFORMATION DOCUMENT, FEBRUARY 2012**



### **INTRODUCTION**

The applicant, San Miguel Fruits SA (Pty) Ltd, is proposing the expansion of existing citrus cultivation operations on the farm known as the River Bend Citrus Farm near Addo in the Sundays River Valley Municipality. The project is proposed to take place on three properties which form part of the existing farm in the Addo/Kirkwood area. The affected properties include; Remainder of Farm 82 Wolve Kop (~908 ha), Portion 1 of Farm 77 Wellshaven (~22ha) and Portion 3 of Farm 77 Honeyvale (~128ha); approximately 1058 hectares in combined extent. Pending the outcome of the specialist studies the applicant proposes to clear a minimum of approximately 300 ha for citrus cultivation.

In terms of the National Environmental Management Act (Act No. 107 of 1998) as amended (“NEMAA”) and the NEMA EIA regulations, 2010 (as amended), the project requires full Scoping and Environmental Impact Assessment (S&EIR) as well as public participation for activities listed therein.

An application for Environmental Authorisation has been submitted to the Provincial Department of Economic Development, Environmental Affairs and Tourism (DEDEAT). San Miguel Fruits SA (Pty) Ltd has appointed Public Process Consultants as the independent Environmental Assessment Practitioner to manage the Scoping and EIA process for this project.

### **WHAT DOES THIS DOCUMENT TELL YOU?**

This document provides you, as an interested and or affected party (I&AP) with background information on the proposed project as well as the Environmental Assessment and Public Participation process that will be undertaken for the project.

It indicates how you can become involved in the project, receive information and raise issues of concern for inclusion in the Scoping and EIA process. The sharing of information forms an important component of the Public Participation process and provides you with the opportunity to become actively involved in the environmental assessment process from the outset. The input received from I&APs together with scientific investigations assists the responsible authority, in this instance the Provincial Department of Economic Development, Environmental Affairs and Tourism (DEDEAT) with their decision-making.

## **ALTERNATIVES AND SITE SELECTION**

A key component of the Environmental Impact Assessment process is the identification and assessment of reasonable and feasible alternatives. The following alternatives have been identified and will be considered in the assessment process:

- No-go alternative
- Layout alternatives

Reasonable and feasible alternatives as raised by I&APs, specialists and the technical team will be considered in the assessment process.

## **OVERVIEW OF THE PROJECT**

The River Bend Citrus Farm is an existing farming operation with approximately 400 hectares currently under cultivation. The study area straddles the Addo-Enon gravel road, and can be reached by travelling approximately 2.1 km along the Zuurberg road (R335) (See attached locality map). The farm has established farming infrastructure such as offices; workshops; storage sheds; and workers rest-areas as well as ablution facilities. San Miguel Fruits SA (Pty) Ltd is proposing the expansion of existing citrus cultivation operations on the River Bend Farm.

The expansion of the agricultural infrastructure of the farm will include the following project activities:

### ***Construction***

- clearing of indigenous vegetation
- landscaping and levelling the site for citrus orchards
- installation of water reticulation and irrigation infrastructure
- construction of a balancing dam
- establishment of unpaved access roads
- establishment of windbreaks

The applicant is of the intention to clear a minimum of 300 ha of undeveloped land; however the size and configuration of the area to be cleared will be determined in consultation with project specialists during the assessment process.

### ***Operation***

- Once suitably prepared it is anticipated that the orchards will be utilised for the cultivation of a variety of citrus crops for the export market.
- Equipment required for the new operations will be stored in the existing storage sheds on the farm
- Water for the development will be supplied from the Sundays River Water Users Association canals, which will be reticulated via the balancing dam.
- It is anticipated a number of additional seasonal and permanent employment opportunities will be created by the project

The current infrastructure at the existing farm will be used to provide technical and logistical support to the proposed expanded farming operation.

## **SCOPING AND ENVIRONMENTAL ASSESSMENT PROCESS**

In terms of the National Environmental Management Act, 1998 (Act No. 107 of 1998) as amended (“NEMAA”) and the NEMA EIA regulations, 2010, GN R 543, 544, 545 and 546 published in Government Gazette 33306 on the 2 August 2010 (as amended), the project requires Scoping and Environmental Impact Assessment (EIA) because it includes, amongst others, the following listed activity in GN R 545:

**16. *The physical alteration of virgin soil to agriculture, or afforestation for the purposes of commercial tree, timber or wood production of 100 hectares or more.***

Other listed activities triggered by the project are:

**GN R544:** Listing Notice 1 Activities: 11.(iv); 18. (i) and 42

**GN R546:** Listing Notice 3 Activities: 2.(a) iii (dd) & (ff); 4.(a) ii (ee) & (gg); 12.(a); 13.(a) & (c) ii (ff); 14.(a) I; 23.(a) ii (gg)

The decision making authority is the Provincial Department of Economic Development, Environmental Affairs and Tourism, Cacadu Region. The environmental assessment needs to show the responsible authority (DEDEAT), and the project proponent, San Miguel Fruits SA (Pty) Ltd, what the consequences of their choices will be in biophysical, social and economic terms.

Public Process Consultants has been appointed by San Miguel Fruits SA (Pty) Ltd as the independent Environmental Assessment Practitioner (EAP) to undertake the Scoping and Environmental Impact Assessment for the project. Public involvement forms an important component of this process, by assisting in the identification of issues and alternatives to be evaluated. The Environmental Assessment Process being implemented can be summarised as follows:

### **Stage 1: Environmental Scoping**

This Scoping process is being planned and conducted in a manner that is intended to provide sufficient information to enable the authorities to reach a decision regarding the scope of issues to be addressed in the EIA, and in particular to convey the range of specialist studies that will be included as part of the Environmental Impact Reporting Phase of the EIA, as well as the approach to these specialist studies. Within this context, the objectives of this Scoping process are to:

- Identify and inform a broad range of stakeholders about the proposed development;
- Clarify the scope and nature of the proposed activities and the alternatives being considered;
- Through a process of broad-based consultation with stakeholders, conduct an open, participatory and transparent participation process and facilitate the inclusion of stakeholder issues in the decision-making process;
- Identify and document the key issues to be addressed in the forthcoming Environmental Impact Reporting Phase of the EIA.
- Establish the range of specialist studies that will be included as part of the Environmental Impact Assessment Phase of the EIA, as well as the approach to these specialist studies.

### **Stage 2: Environmental Impact Assessment**

The purpose of this stage of the EIA is to undertake specialist investigations to address the issues identified through the Scoping Process. The specialists will build on the information that was gathered for stage 1, but will focus their studies on the area under assessment. The specialist studies will include the assessment of alternatives, identification of impacts and the determination of the significance of impacts. Specialists will, where appropriate, formulate mitigatory measures to maximise positive benefits or avoid/minimise potential negative impacts. The following specialist assessments have been identified, at this stage, to form part of the environmental assessment stage of the project:

- Ecological Specialist Assessment – vegetation and fauna
- Wetland Specialist Assessment
- Heritage Assessment - Palaeontological Desktop & Archaeological Phase 1 Assessment

## **PUBLIC PARTICIPATION PROCESS**

Public Participation forms an integral component of the scoping and environmental impact assessment process. The following outlines the steps in the public participation process which will be undertaken to run in parallel to stage one and two of the EIA process.

### **Step 1: Notify Authorities of Environmental Assessment Process**

An application for Scoping and EIA has been submitted to the Provincial Department of Economic Development, Environmental Affairs and Tourism (DEDEAT).

### **Step 2: Notification to I&APs and Identification of Issues (30 days)**

Step two entails providing notification to I&APs of the project as well as the identification of any issues they may have for inclusion in the Draft Scoping Report. Identified I&APs are provided with a Background Information Document (BID) on the project, including a locality map and a comment form. An advertisement will be placed in a local newspaper and a site notice board will be erected at the site so as to inform potential I&APs of the assessment process. I&APs are required to register their interest in the project to receive further project information. One-on-one meetings will be conducted with key stakeholders during this phase of the process should these be requested. I&APs will be provided with a minimum of a **30 day period** within which to raise any issues for inclusion in the Draft Scoping Report.

### **Step 3: I&AP Review of the Draft Scoping Report (30 days)**

Issues raised by I&APs are compiled into an Issues and Responses Trail for inclusion in the Draft Scoping Report which is released for a 30 day comment period. This report will also include the Plan of Study for EIA. All registered I&APs on the project database are notified in writing of the opportunity to comment. In order to assist I&APs with their understanding of the project and to facilitate the identification of issues for inclusion in the Final Scoping Report I&APs will be provided with an executive summary of the Draft Scoping Report. Copies of the report will also be made available on the website [www.publicprocess.co.za](http://www.publicprocess.co.za).

### **Step 4: Final Scoping Report**

The comments received from I&APs during the review process are considered in the compilation of the Final Scoping Report before it is submitted to DEDEAT for their decision making. All I&APs on the project database will be notified in writing of the submission of the Final Scoping Report to the authorities. Any additional comments on the Final Scoping Report are to be submitted directly to the

DEDEAT. The Final Scoping Report will include the Plan of Study for EIA (PSEIA) and Terms of Reference for specialist studies to be undertaken as part of the EIA process. The PSEIA is subject to the approval of the authorities.

#### **Step 5: Draft EIA Report and Draft Environmental Management Programme Report (30 days)**

When the DEDEAT accepts the Final Scoping Report and PSEIA, the environmental assessment phase may commence. The purpose of the EIA is to:

- Address issues that have been raised through the Scoping Process
- Assess reasonable and feasible alternatives that form part of the proposed activity (including No Go Option)
- Assess potential impacts
- Recommend management actions to enhance benefits or avoid/minimise negative impacts.

This stage in the process entails the compilation and release of a Draft EIA Report (including the draft EMPr) for a 30 day I&AP review period. All registered I&APs will be notified of this comment period in writing. All comments received from I&APs and authorities via meetings held or written correspondence during this period are compiled into a Comment and Response Trail for inclusion in the Final EIA Report. The Comments and Responses Trail will indicate the nature of the comment, when and who raised the comment as well as indicate how the comment received has been considered in the Final EIA Report, in the project design or the EMPr for the project.

#### **Step 6: Final EIA Report & Draft EMPr**

The Final EIA Report, including the Comments and Responses Trail and Draft EMPr will be compiled for submission to the authority for decision making (DEDEAT). All I&APs on the project database will be notified in writing of the submission of the Final EIA Report. Any additional comments on the Final EIA Report and EMPr must be submitted directly to the DEDEAT.

#### **Step 7: Notification of Environmental Authorisation and Appeal Period**

All I&APs on the project database will be notified in writing regarding the environmental authorisation for the project and the appeal period, as well as the manner of appeal.

#### **HOW CAN YOU GET INVOLVED?**

1. By registering your interest in the project with the consultant indicated below.
2. By responding to our invitation for your involvement advertised in local newspapers.
3. By mailing or faxing a comment form to the participation consultant indicated below.
4. By telephonically contacting the public participation consultant if you have a query, comment, or require further project information.
5. By reviewing the various reports within the specified comment periods.

#### **WHO SHOULD YOU CONTACT?**

##### **Sandy Wren, Public Process Consultants**

PO Box 27688, Greenacres, 6057

Phone 041 - 374 8426

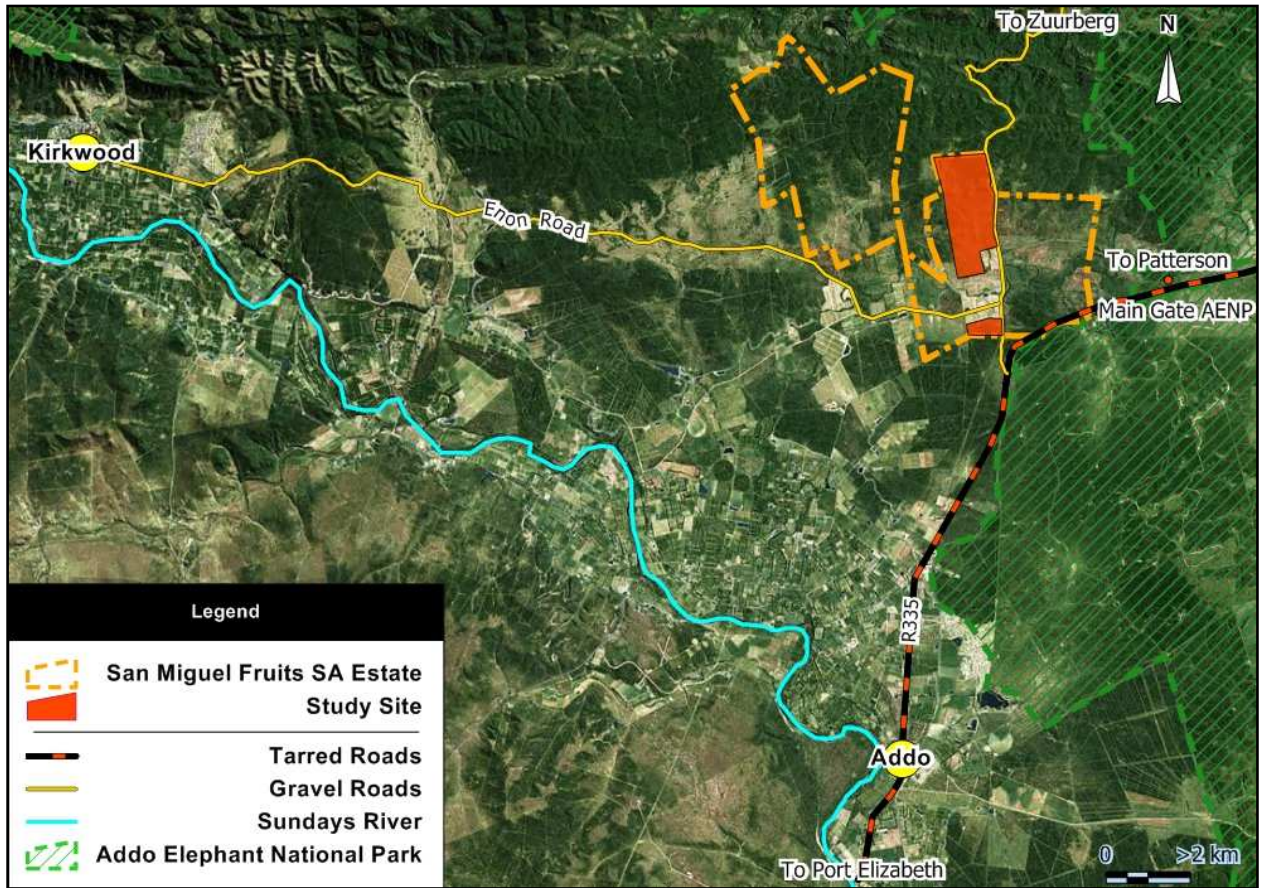
Fax 041 - 373 2002

Cell 082 4909 828

Email [sandy@publicprocess.co.za](mailto:sandy@publicprocess.co.za)

**Website for information on this EIA process: [www.publicprocess.co.za](http://www.publicprocess.co.za)**





## Letter 2: Notice of the Draft Scoping Report Review Period

PO Box 27688 Greenacres 6057  
120 Diaz Road Adcockvale, PE 6001  
Phone 041 374 8426 Fax 041 373 2002  
Email [sandy@publicprocess.co.za](mailto:sandy@publicprocess.co.za)  
Ck 97/32984/23 VAT 44601 68273



**Public Process Consultants**  
Environmental Impact Assessment and  
Public Participation Management

5 April 2012

Dear ... ..

**RE: Notice of Comment Period, Draft Scoping Report for the Scoping and Environmental Impact Assessment for the Expansion of Agriculture Activities on the River Bend Citrus Farm, near Addo, Sundays River Valley Municipality (DEDEAT Ref No: EC06/LN2/M/12-10).**

As a registered interested and affected party on the database for the above project you are hereby notified of the release of the Draft Scoping Report for a **34 day comment period** from the **10 April 2012 to 14 May 2012**.

### Availability of Information

In order to assist you with the submission of any comments you may have on the report we have enclosed with this correspondence an Executive Summary of the Draft Scoping Report as well as a comment form. Full copies of the report can be downloaded from the website [www.publicprocess.co.za](http://www.publicprocess.co.za). The issues already raised by I&APs are summarised in Chapter Four of the Draft Scoping Report and are included as an appendix to the report.

Input received from I&APs forms an important part of the Scoping Process, and assists in determining the scope and terms of reference for specialist studies to be undertaken in the EIA Phase of the Assessment. Chapter 6 of the Draft Scoping Report provides an outline of the specialists proposed to form part of the EIA phase of the Assessment process. The comments made by interested and affected parties (I&APs) during the current comment period, will be considered in the finalisation of the Scoping Report before submission to the Department of Economic Development Environmental Affairs and Tourism (DEDEAT) for decision making.

You are required to submit any comments that you may have on the Draft Scoping Report by the **14 May 2012**, to the Environmental Assessment Practitioner, contact details above.

### Next Step in the Process

The next step in the process entails the preparation of the Final Scoping Report for submission to the DEDEAT for their decision making. As a registered I&AP on the project database you will be notified in writing of the submission of the Final Scoping Report to the authority, and further opportunities for comment.

Should you have any comments or queries regarding the above please do not hesitate to contact Sandy Wren or Paul Steyn at the contact details above. We look forward to your participation in this stage of the process.

Yours sincerely

**SANDY WREN**

## Comment form

**DRAFT SCOPING REPORT  
COMMENT FORM**

**Scoping and Environmental Impact Assessment**

**Applicant:** San Miguel Fruits SA (Pty) Ltd

**Project:** The proposed expansion of existing agricultural activities on River Bend Citrus Farm, near Addo, Sundays River Valley Municipality.

**Location:** The Remainder of Farm 82 Wolve Kop, Portion 1 of Farm 77 Wellshaven and Portion 3 of Farm 77 Honeyvale which have a combined extent of approximately 1058 hectares.

**Primary Listed Activity:** GN R 545 Activity No 16.

**Return Completed Reply Form to:**

*Public Process Consultants, PO Box 27688, Greenacres 6057  
Phone: 041 – 374 8426 or Fax 041-373 2002 or Email sandy@publicprocess.co.za*

**Complete all Relevant Sections Below and Return By: 14 May 2012**

Please provide your full contact details:

FIRST NAME: \_\_\_\_\_ SURNAME: \_\_\_\_\_

ORGANISATION: \_\_\_\_\_ TITLE: \_\_\_\_\_

POSTAL ADDRESS: \_\_\_\_\_

CODE: \_\_\_\_\_

PHONE: \_\_\_\_\_ FAX: \_\_\_\_\_

CELL: \_\_\_\_\_ EMAIL: \_\_\_\_\_

**Please clearly outline comments you may have in response to the Draft Scoping Report (use additional pages if needed)**

# Executive Summary

## Executive Summary

### **Project Background and Project Overview**

The applicant, San Miguel Fruits SA (Pty) Ltd, is proposing the expansion of existing citrus cultivation operations on the farm known as River Bend Citrus near Addo in the Sundays River Valley Municipality. Subject to the outcome of the specialist studies to be undertaken as part of the EIA process, the applicant proposes to clear a minimum of 300 ha of land for additional citrus cultivation. The project is proposed to take place on three adjoining properties which form part of the existing River Bend Citrus farming operations, namely:

- Remainder of Farm 82 Wolve Kop (~908 ha),
- Portion 1 of Farm 77 Wellshaven (~22ha), and
- Portion 3 of Farm 77 Honeyvale (~128ha).

The three adjoining properties measure approximately 1 058 hectares in combined extent. It is important to note that, while the Remainder of Farm 82 Wolve Kop measures 908 ha in extent, 448 ha of this (east of the Zuurberg road) forms part of the River Bend Concession area with South African National Parks (SANParks). This portion of land is not being considered for the expansion of citrus production as per the concession agreement with SANParks. In addition, approximately 110 ha of the Remainder of Farm 82 Wolve Kop (west of Zuurberg road) is already being actively farmed for citrus production. This assessment process will therefore focus on the remaining 500 ha of undeveloped land which is being considered for the expansion of agricultural activities.

Included in the project proposal is the construction of a new balancing dam for irrigation purposes, estimated to be 40 000m<sup>3</sup>. The expansion of the existing agricultural activities will include the following project activities:

#### **Construction**

- Clearing of approximately 300 hectares of indigenous vegetation
- Leveling and shaping the area for orchards
- Construction of a storage dam (approximately 40 000 m<sup>3</sup>) for irrigation water
- Installation of water reticulation and irrigation infrastructure
- Construction of gravel surfaced internal access roads

#### **Operation**

- Once suitably prepared it is anticipated that the orchards will be utilized for the production of citrus fruit.
- The existing support infrastructure (office, workshops, storage sheds, and ablution facilities) on the farm will be used to service the additional orchards.
- Water for the development will be supplied from the Sundays River Water Users Association water supply, which will be stored in the irrigation dam on site.

### **Site Description**

The farm has established farming infrastructure such as offices; workshops; storage sheds; and workers rest-areas as well as ablution facilities. The remainder of Farm 82 Wolve Kop is bisected into a west and east portion by the gravel Zuurberg Road (R335). Only the western half forms part of this assessment as the eastern half currently forms part of the Addo Elephant National Park concession area. The study area is also divided into a northern and southern section by the already existing orchards that have been planted on either side of the Coerney River which flows in an east-west direction through the middle of RE/82 Wolve Kop.

The sections of the property that are being assessed in the Scoping and EIA process are covered largely by indigenous vegetation (Sundays Thicket), which is intersected by a variety of cut-lines, animal paths, and internal vehicle tracks; attesting to past agricultural use of the property. In addition, the undeveloped portion of land in the southern section of RE/82 Wolve Kop includes a number of labourers' dwellings within a fenced compound.

### Legal Framework

In terms of the National Environmental Management Act, 1998 (Act No. 107 of 1998) as amended (“NEMAA”) and the NEMA EIA regulations, 2010, GN R 543, 544, 545 and 546 published in Government Gazette 33306 on the 2 August 2010 (as amended), the project requires Scoping and Environmental Impact Assessment (EIA) because it includes, amongst others, the following listed activity in GN R 545:

**16. The physical alteration of virgin soil to agriculture, or afforestation for the purposes of commercial tree, timber or wood production of 100 hectares or more.**

Other listed activities triggered by the project are:

**GN R544:** Listing Notice 1 Activities: 11.(iv); 18. (i) and 42

**GN R546:** Listing Notice 3 Activities: 2.(a) iii (dd) & (ff); 4.(a) ii (ee) & (gg); 12.(a); 13.(a) & (c) ii (ff); 14.(a) I; 23.(a) ii (gg)

The decision making authority is the Provincial Department of Economic Development, Environmental Affairs and Tourism, Cacadu Region. The environmental assessment needs to show the responsible authority (DEDEAT), and the project proponent, San Miguel Fruits SA (Pty) Ltd, what the consequences of their choices will be in biophysical, social and economic terms.

### Identification of Issues

Issues and concerns identified for inclusion in the Scoping Report that require specialist assessment in the environmental assessment phase of the EIA have been identified using the following methods:

- Specialist Site Visit
- Desktop review of regional planning documentation and frameworks
- Scoping of issues and concerns with I&APs through correspondence received (emails, comment forms) in response to the project announcement
- Scoping of issues with authorities (affected organs of state)

Based on issues identified thus far in the process, the following specialist studies / input needs to be obtained:

- Biophysical Assessment including vegetation / habitat sensitivity mapping, identification of species of special concern, and faunal assessment
- Wetlands & Drainage Lines study to identify and delineate wetlands and drainage lines; and determine the potential aquatic sensitivity of these features.
- Paleontological Assessment in order to determine the type and location of fossils that may be present within the study area.
- Phase 1 Archaeological Assessment
- Soil Suitability Assessment to establish the suitability of the soil for the proposed orchards.
- Technical input with regards to irrigation water supply and storage, as well as the design and configuration of internal roads, and irrigation infrastructure.
- The terms of reference for the specialist studies to be undertaken in the EIA phase of the assessment have been included in the Plan of Study for EIA (Chapter 6 of the Draft Scoping Report).

### Current Stage in the Process

This EIA process is currently at the stage where the Draft Scoping Report, including the Plan of Study for EIA, is being released for a 30 day authority and I&AP comment period. The next stage in the process will entail the inclusion of the comments received from I&APs during this period in the Final Scoping Report, and where appropriate amendments to the report will be made before the Final Scoping Report is submitted to the DEDEAT for their decision making.