






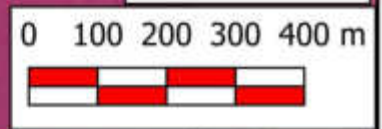
### Legend

 Study Sites

#### Dominant Soils

-  Impeded internal drainage, flood hazard
-  Limiting soil depth
-  Limiting soil depth, moderate to strong structure, high clay content
-  Moderate to strong structure, high clay content, rainfall efficiency

Scale 1:12000



# **Company Profile & CV of Lizelle Gregory (Environmental Assessment Practitioner)**

**Appendix J**



**Bokamoso**

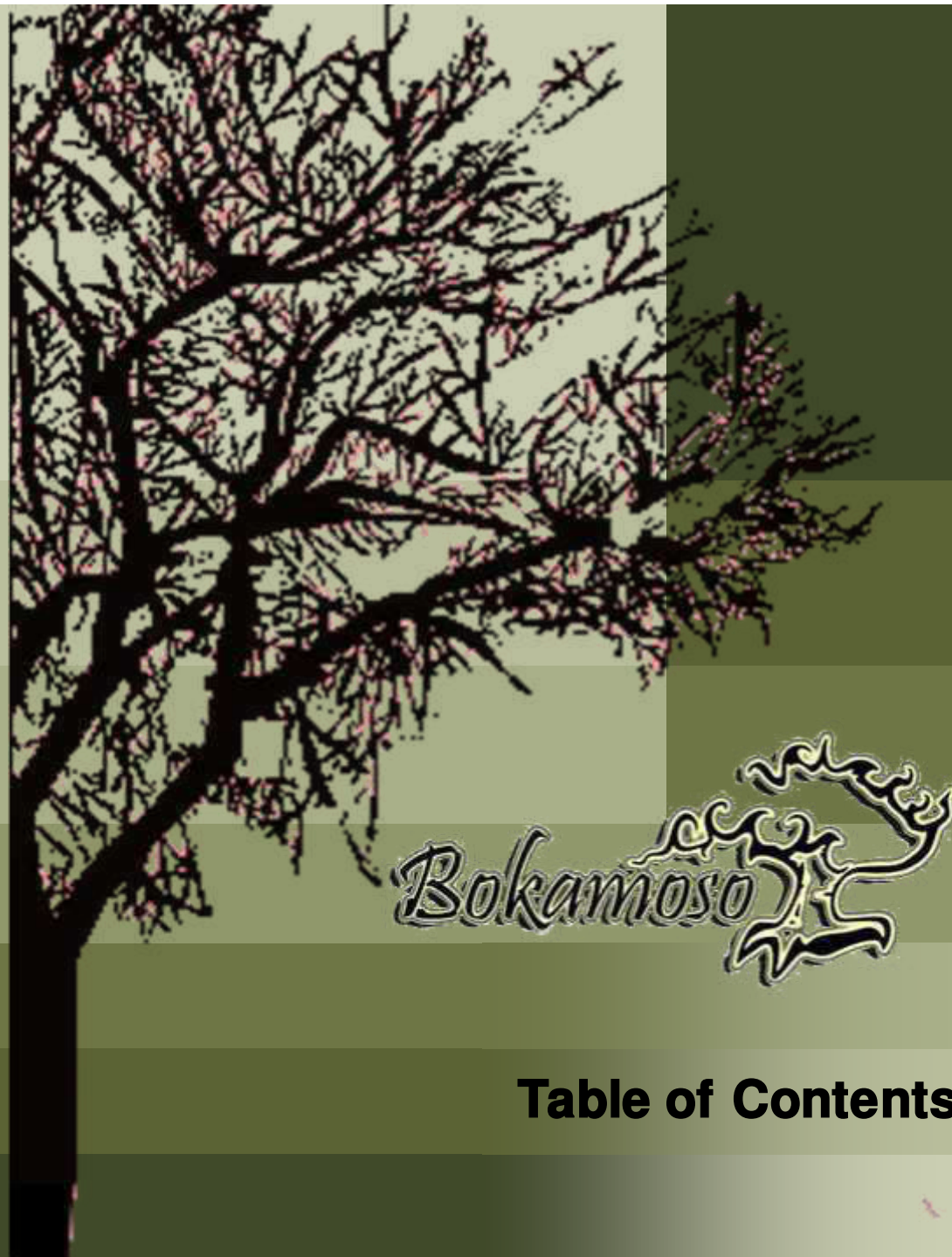
**Landscape Architects &  
Environmental consultants**

**P.O.BOX 11375  
Maroelana  
0161**

**Tel: (012) 346 3810  
Fax: (086) 570 5559**

**E-mail: [lizelle@bokamoso.net](mailto:lizelle@bokamoso.net)  
[reception@bokamoso.net](mailto:reception@bokamoso.net)  
Website: [www.bokamoso.net](http://www.bokamoso.net)**

- 01** Executive Summary
- 02** Vision, Mission & Values
- 03** Human Resources
- 04** Services
- 05** Landscape Projects
- 06** Corporate Highlights
- 07** Environmental Projects
- 08** Indicative Clients
- 09** Tools



## **Table of Contents**

**Bokamoso** specialises in the fields of Landscape Architecture and all aspects of Environmental Management and Planning. Bokamoso was founded in 1992 and has shown growth by continually meeting the needs of our clients. Our area of expertise stretches throughout the whole of South Africa. Our projects reflect the competence of our well compiled team. The diversity of our members enables us to tend to a variety of needs. Our integrated approach establishes a basis for outstanding quality. We are well known to clients in the private, commercial as well as governmental sector.

At Bokamoso we stand on a firm basis of environmental investigation in order to find unique solutions to the requirements of our clients and add value to their operations.



**01 Executive Summary**

**011 Company Overview**



### **Vision:**

At Bokamoso we strive to find the best planning solutions by taking into account the functions of a healthy ecosystem. Man and nature should be in balance with each other.

### **Mission:**

We design according to our ethical responsibility, take responsibility for successful completion of projects and constitute a landscape that contributes to a sustainable environment. We add value to the operations of our clients and build long term relationships that are mutually beneficial.

### **Values:**

Integrity

Respect



**Bokamoso** stands on the basis of fairness. This include respect within our multicultural team and equal opportunities in terms of gender, nationality and race.

We have a wide variety of projects to tend to, from complicated reports to landscape installation. This wide range of projects enables us to combine a variety of professionals and skilled employees in our team.

Bokamoso further aids in the development of proficiency within the working environment. Each project, whether in need of skilled or unskilled tasks has its own variety of facets to bring to the table.

We are currently in the process of receiving our BEE scorecard. We support transformation in all areas of our company dynamics.



**03 Human Resources**

**031 Employment Equity**

## **Lizelle Gregory (100% interest)**

Lizelle Gregory obtained a degree in Landscape Architecture from the University of Pretoria in 1992 and passed her board exam in 1995.

Her professional practice number is PrLArch 97078.

Ms. Gregory has been a member of both the Institute for Landscape Architecture in South Africa (ILASA) and South African Council for the Landscape Architecture Profession (SACLAP), since 1995.

Although the existing Environmental Legislation doesn't yet stipulate the academic requirements of an Environmental Assessment Practitioner (EAP), it is recommended that the Environmental Consultant be registered at the International Association of Impact Assessments (IAIA). Ms. Gregory has been registered as a member of IAIA in 2007.

Ms. Gregory attended and passed an International Environmental Auditing course in 2008. She is a registered member of the International Environmental Management and Assessment Council (IEMA).

She has lectured at the Tshwane University of Technology (TUT) and the University of Pretoria (UP). The lecturing included fields of Landscape Architecture and Environmental Management.

Ms. Gregory has more than 25 years experience in the compilation of Environmental Evaluation Reports:

Environmental Management Plans (EMP);

Strategic Environmental Assessments;

All stages of Environmental input ;

EIA under ECA and the new and amended NEMA regulations and various other Environmental reports and documents.

Ms. Gregory has compiled and submitted more than 600 Impact Assessments within the last 5-6 years. Furthermore, Ms. L. Gregory is also familiar with all the GDARD/Provincial Environmental policies and guidelines. She assisted and supplied GAUTRANS/former PWV Consortium with Environmental input and reports regarding road network plans, road determinations, preliminary and detailed designs for the past 12 years.



**03 Human Resources**

**032 Members**



# Consulting

## Anè Agenbacht

**Introduction to Sustainable Environmental Management—An overview of Principles, Tools, & Issues (Potch 2006)**  
**Leadership Training School (Lewende Woord 2010)**  
**BA Environmental Management (UNISA 2011)**  
**PGCE Education (Unisa 2013) - CUM LAUDE**  
Project Manager  
More than 10 years experience in the compilation of various environmental reports

## Mary-Lee Van Zyl

**MSc Plant Science (UP)**  
**BSc (Hons) Plant Science (UP)**  
**BSc Ecology (UP)**  
More than 5 years working experience in the Environmental field  
Specialises in ECO works, Basic Assessments, EIA's, and Flora Reports  
Compilation of various Environmental Reports

## Dashentha Moodley

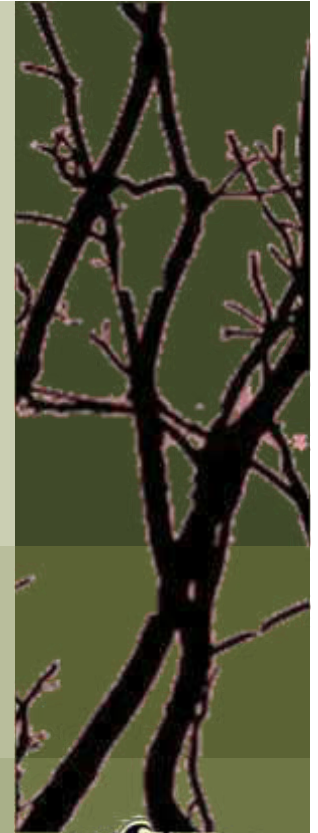
**BA (Hons) Degree in Environmental Management (UNISA) - CUM LAUDE**  
**Bachelor of Social Science in Geography & Environmental Management (UKZN)**  
More than 6 years experience in WUL Applications & Integrated Environmental Management within water resource management.  
Senior Environmental Practitioner & Water Use Licence Consultant  
Specialises in Water Use License & Compilation of various Env. Reports

## Adèle Drake

**BA Geography & History (UP)**  
**NQF Level 7 Air Quality Management (UJ)**  
More than 15 years experience in the field of Environmental Management within Mining Industry (surface and underground), Forestry Industry, Renewable Energy Industry (WEF), and Environmental Consulting. Also ISO 14000, ISO 9000, and Safety Management Auditor.

## Ronell Kuppen

**BSc (Hons) in Geography (UNISA)**  
**BA Environmental and Development (UKZN)**  
More than 5 years experience in Environmental Consulting  
Specializing in WUL Applications, Waste License Applications, EIAs, Basic Assessments, Public Participations, Borrow Pits



**03 Human Resources**

**033 Personnel**

**Ben Bhukwana**

**BSc Landscape Architecture (UP)**

More than 8 years experience in the field of Landscape Architecture (Design, Construction, Implementation, and Management).  
Specialises in landscape design, ECO, rehabilitation plans and compilation various environmental reports and compilation of tender documents

**Juanita de Beer**

**Diploma Events Management and Marketing (Damelin)**

Specializes in Public relations and Public Participation Processes (4 years experience)  
Specialises in compiling various environmental reports

**Alfred Thomas**

**CIW Foundation & Internet Marketing (IT Academy)**

12 years experience in GIS and IT in general.  
GIS Operator and Multimedia Specialist.

**Lizette Delpont**

**MSc. In Aquatic Health (UJ)**

**BSc. Hons. Environmental Management**

Environmental Assessment Practitioner and Wetland Specialist  
Registered with the South African Wetland Society (SAWS)

**A.E. van Wyk**

**BSc Environmental Sciences (Zoology and Geography)**

Environmental Control Officer  
Junior avifauna specialist



**03 Human Resources**

**034 Personnel**

**Elsa Viviers**

**Interior Decorating (Centurion College)**

( Accounting/ Receptionist ) and Secretary to Lizelle Gregory

**Loura du Toit**

**N. Dip. Professional Teacher (Heidelberg Teachers Training College )**

Librarian and PA to the Project Manager

**Merriam Mogalaki**

Administration Assistant with in-house training in bookkeeping

## **Landscape Contracting**

**Elias Maloka**

Assisting with Public Participations and Office Admin

Site manager overseeing landscape installations.

Irrigation design and implementation.

Landscape maintenance

More than 18 years experience in landscape construction works.

The contracting section comprises of six permanently employed black male workers. In many cases the team consists of up to 12 workers, depending on the quantity of work.



**03 Human Resources**

**035 Personnel**

# In-house Specialists

**Corné Niemandt**

**MSc Plant Science (UP 2015) – Cum Laude**

**BSc (Hons) Zoology (UP 2012)**

**BSc Ecology (UP 2011)**

Specialises in ecological surveys and report writing

Compilation of fauna and flora specialist reports

GIS: Generating maps



*Bokamoso*

**03 Human Resources**

**036 Personnel**

## **01 Environmental Management Services**

- Basic Assessment Reports
- EIA & Scoping Reports
- Environmental Management Plans
- Environmental Scans
- Strategic Environmental Assessments
- EMP for Mines
- Environmental Input and Evaluation of Spatial Development Frameworks
- State of Environmental Reports
- Compilation of Environmental Legislation and Policy Documents
- Environmental Auditing and Monitoring
- Environmental Control Officer (ECO)
- Visual Impact assessments
- Specialist Assistance with Environmental Legislation Issues and Appeals
- Development Process Management
- Water Use License applications to DWA
- Waste License Application



**04 Services**

**041 Consulting Services**

## 02 Landscape Architecture

- Master Planning
- Sketch Plans
- Planting Plans
- Working Drawings
- Furniture Design
- Detail Design
- Landscape Development Frameworks
- Landscape Development Plans (LDP)
- Contract and Tender Documentation
- Landscape Rehabilitation Works

## 03 Landscape Contracting

Implementation of Plans for:

- Office Parks
- Commercial/ Retail / Recreational Development
- Residential Complexes
- Private Residential Gardens
- Implementation of irrigation systems



*Bokamoso* 

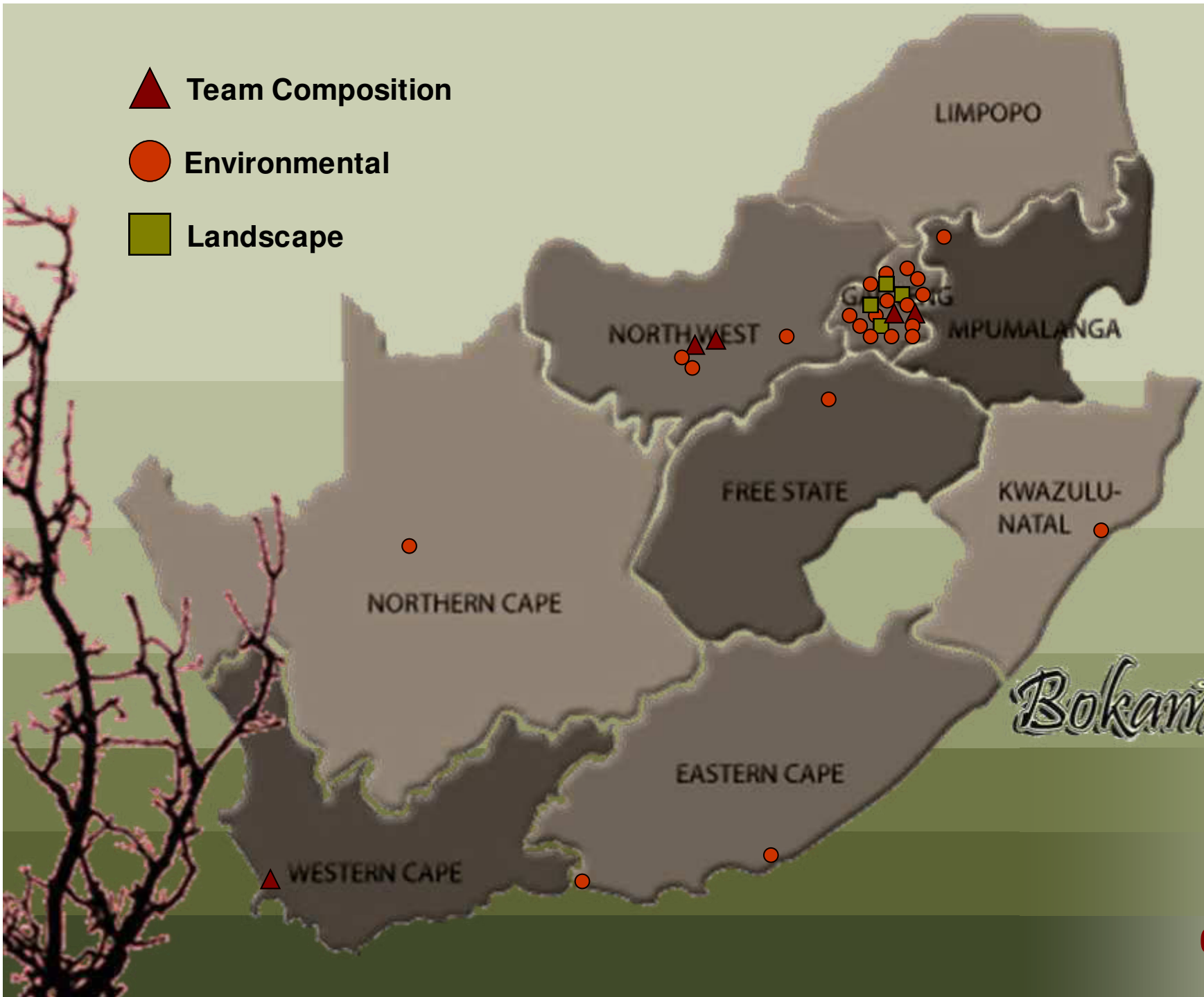
**04 Services**

**042 Contracting Services**

▲ Team Composition

● Environmental

■ Landscape



**04 Services**

**043 Orientation**

# 01 Valpre Bottling Plant, Heidelberg



project  
shelter- site plan



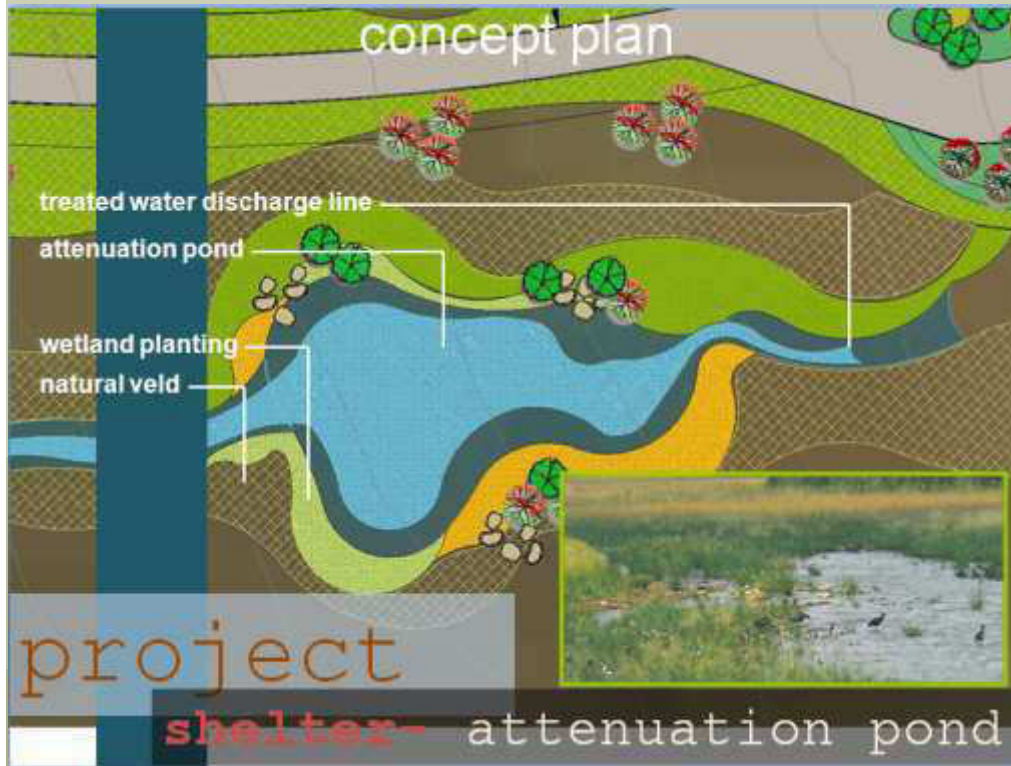
## 05 Landscape Projects- Current

### 051 Commercial





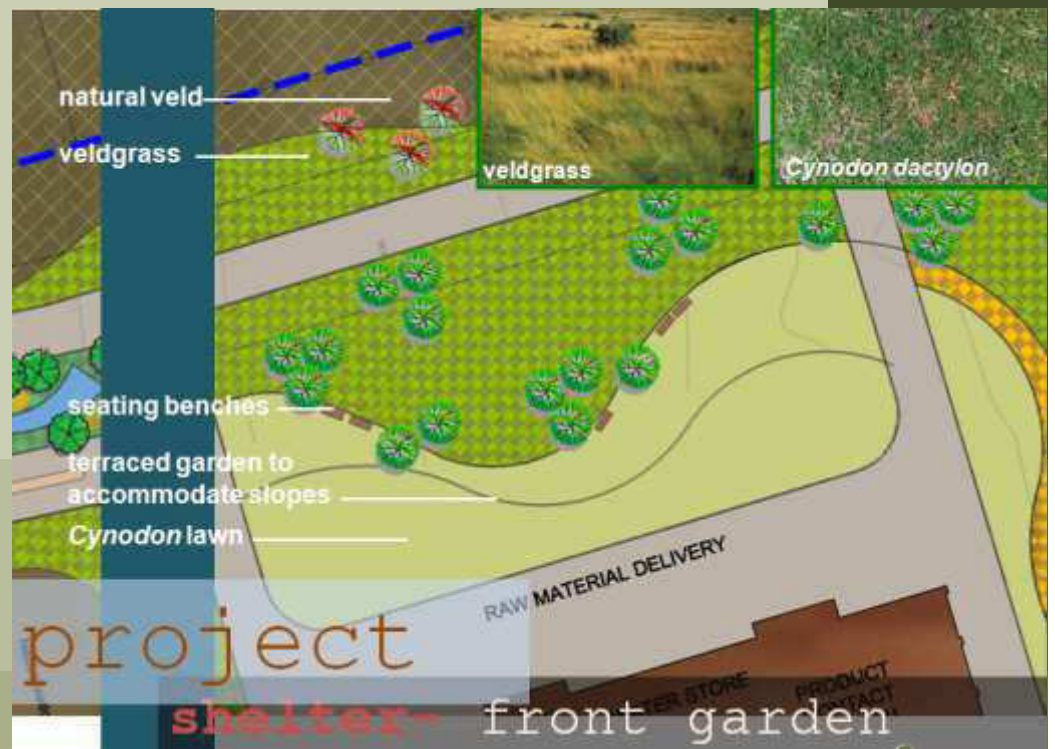
# 01 Valpre Bottling Plant, Heidelberg



## 05 Landscape Projects- Current

### 051 Commercial

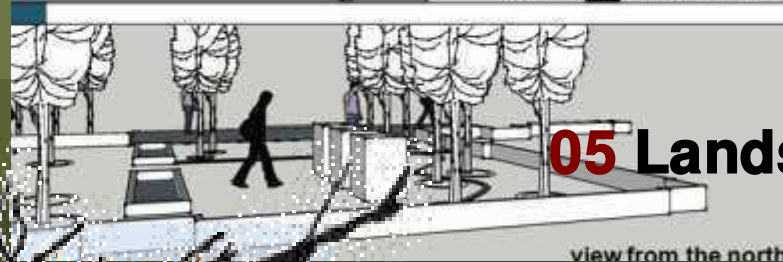
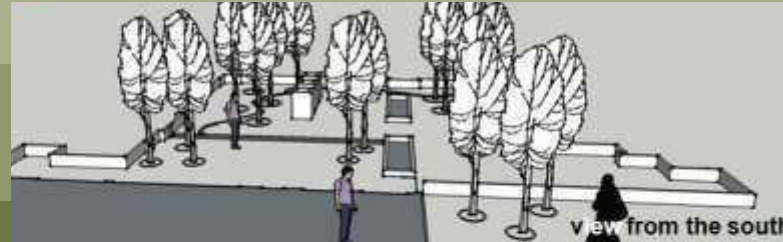
# 01 Valpre Bottling Plant, Heidelberg



## 05 Landscape Projects– Current

### 051 Commercial

# 01 Valpre Bottling Plant, Heidelberg



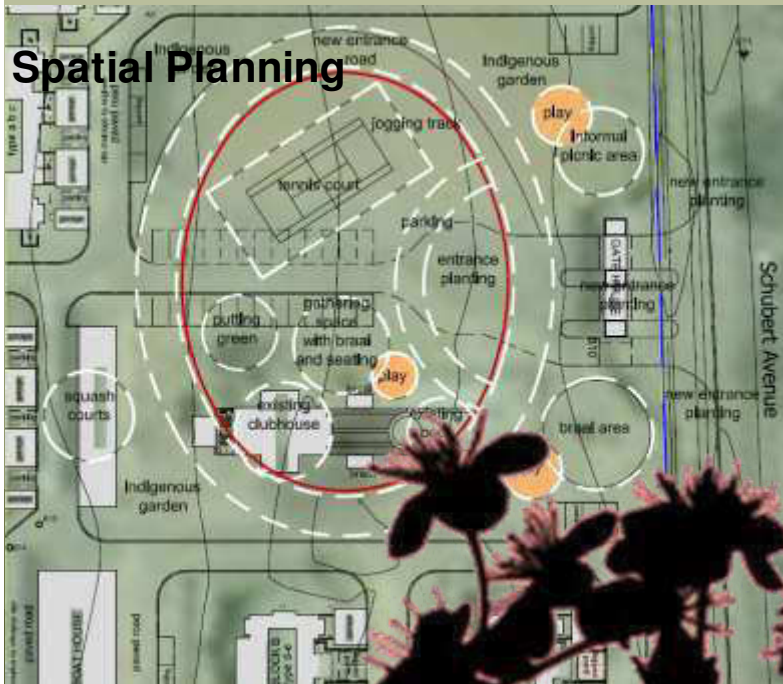
**05** Landscape Projects– Current

**051** Commercial

## 02 Melodie Waters, Hartebeespoortedam



### Spatial Planning



### Indigenous Planting

### Streetscape

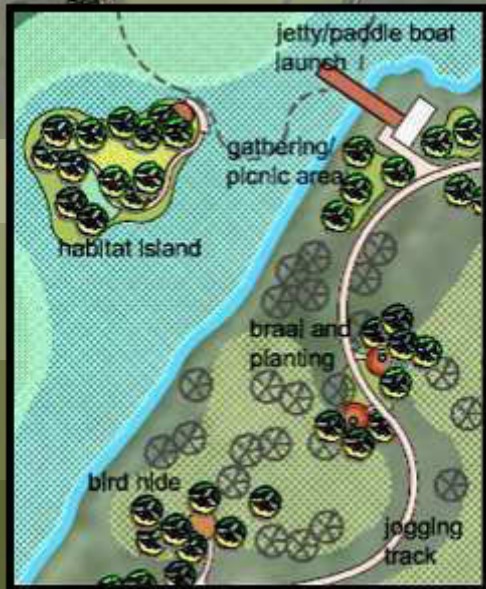


## 05 Landscape Projects – Current

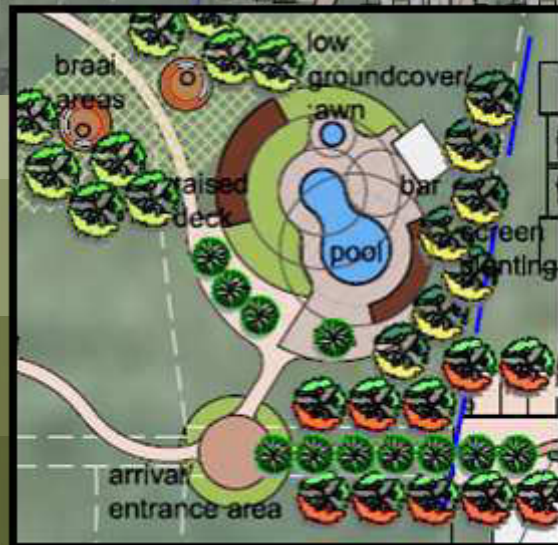
### 052 Commercial/Recreational



## 02 Melodie waters, Hartebeestpoortdam



Rehabilitation



Area Layout



05 Landscape Projects– Current

052 Commercial/Recreational

### 03 Grain Building, Pretoria



*Bokamoso*

**05** Landscape Projects– Completed

**053** Offices

## 04 Ismail Dawson offices, Pretoria



*Bokamoso*

05 Landscape Projects – Conceptual

053 Offices

# 05 Celtic Manor, Pretoria



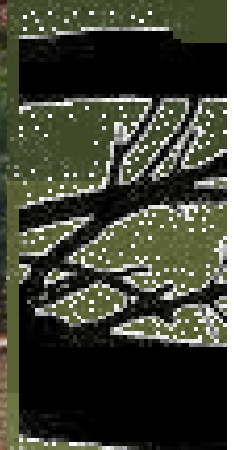
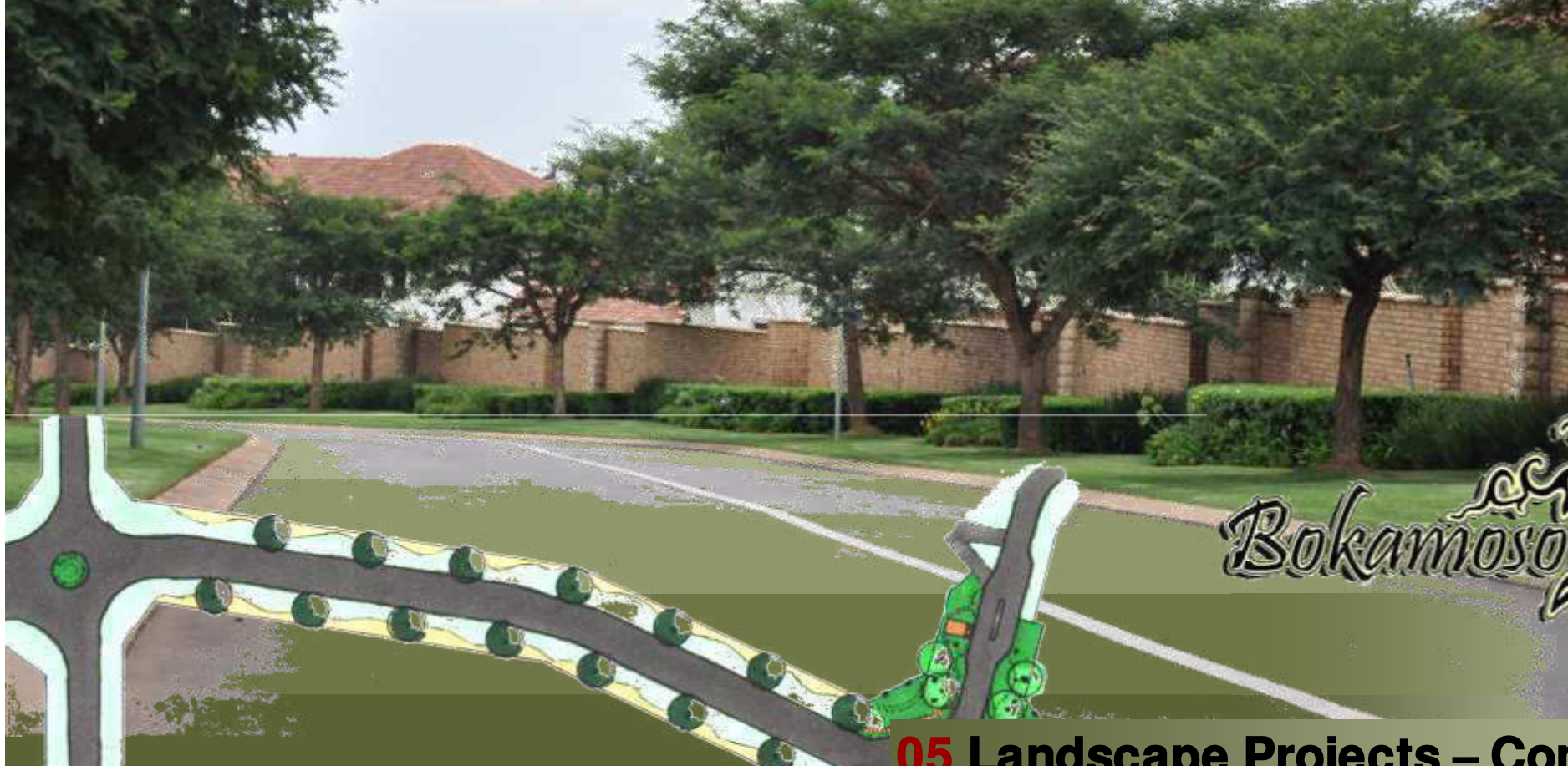
*Bokamoso*

**05** Landscape Projects - Completed

**054** Complex Development



**06 The Wilds, Pretoria**



*Bokamoso*

**05 Landscape Projects – Completed**

**054 Complex Development**

# 07 The Wilds, Pretoria

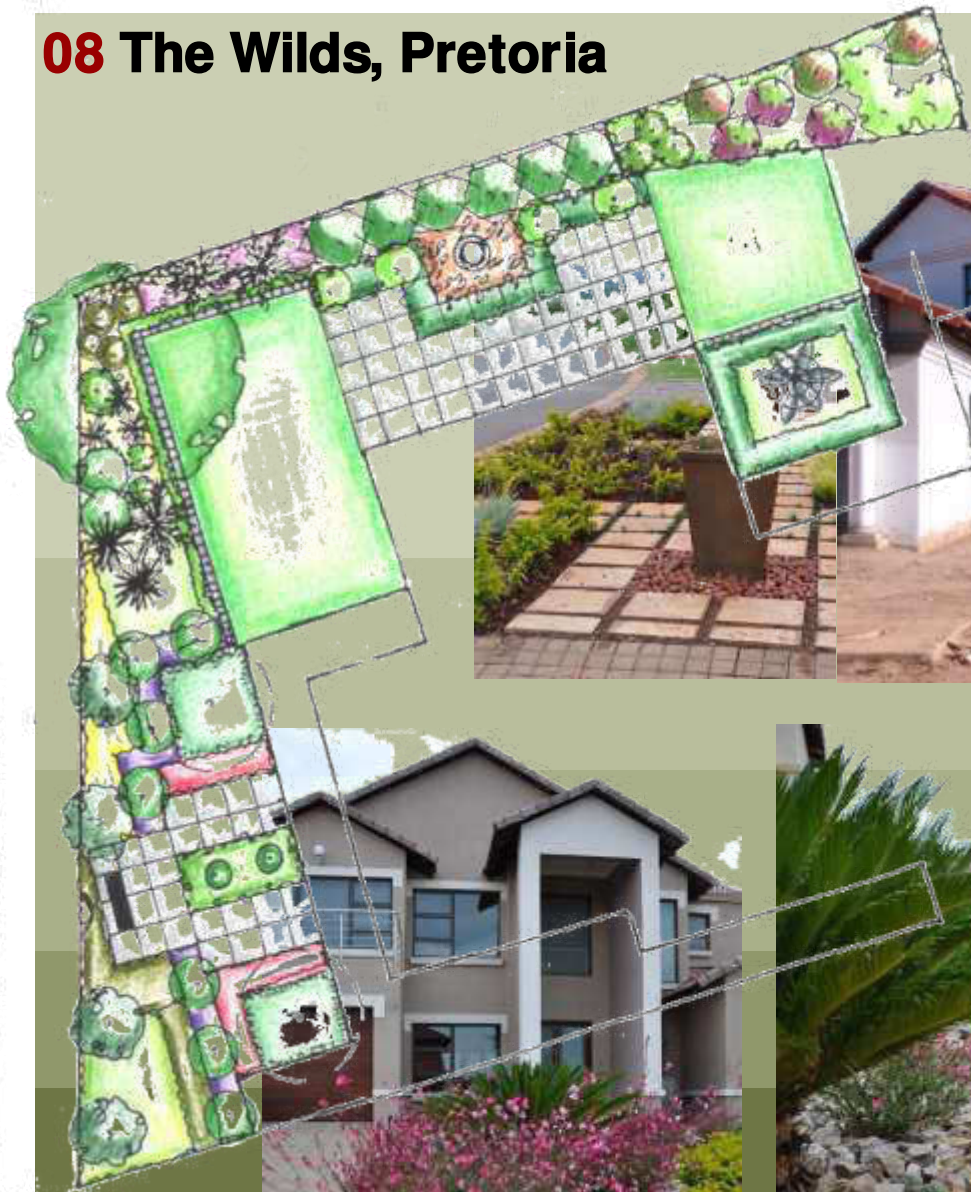


بکاموسو  
*Bokamoso*

**05 Landscape Projects – Completed**

**055 Residential**

## 08 The Wilds, Pretoria



*Bokamoso*

**05 Landscape Projects – Completed**

**055 Residential**

**09 The Wilds, Pretoria**

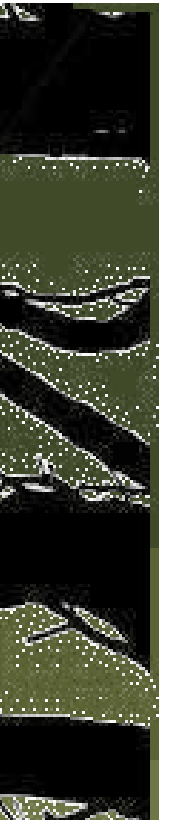


*Bokamoso*

**05 Landscape Projects – Completed**

**055 Residential**

# 010 The Wilds, Pretoria



**05 Landscape Projects – Completed**

**055 Residential**



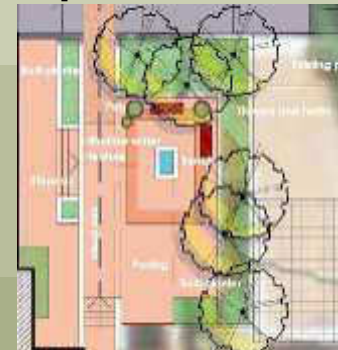
# 011 Governor of Reserve Bank's Residence, Pretoria



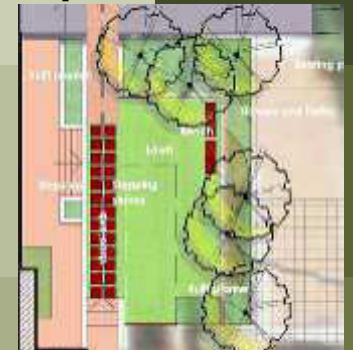
Plant Palette



Option 1



Option 2



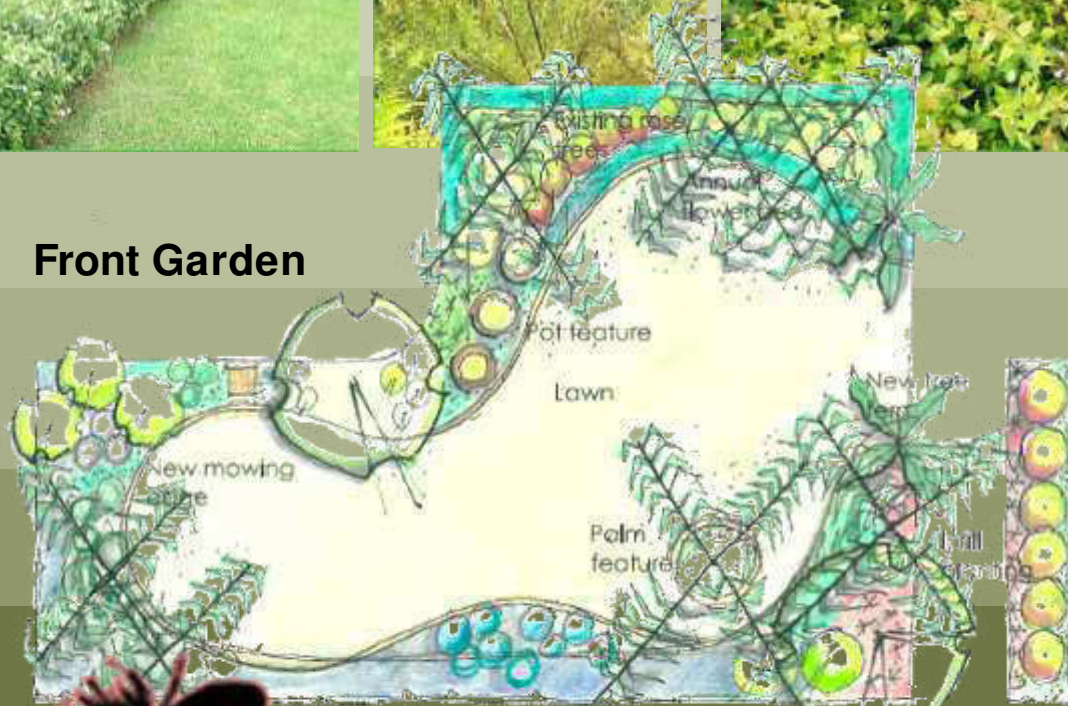
05 Landscape Projects – Conceptual

055 Residential

# 012 House Ismail, Pretoria



Front Garden

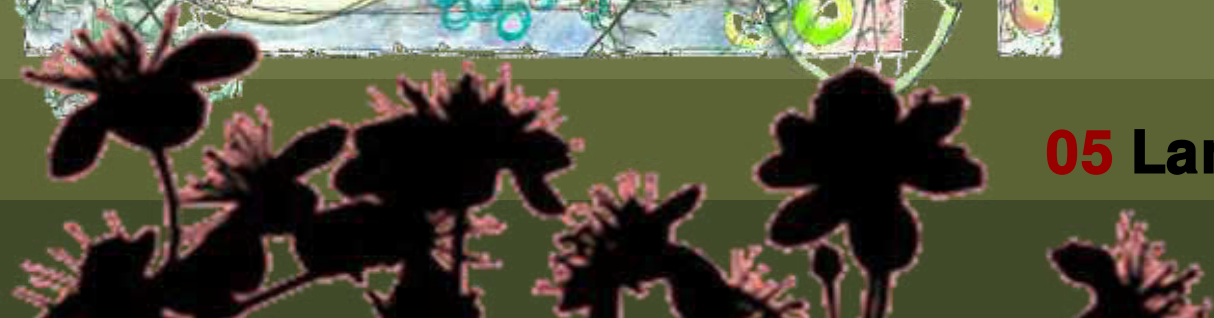


Back Garden



05 Landscape Projects - Conceptual

055 Residential



# 013 Forest Garden, Pretoria



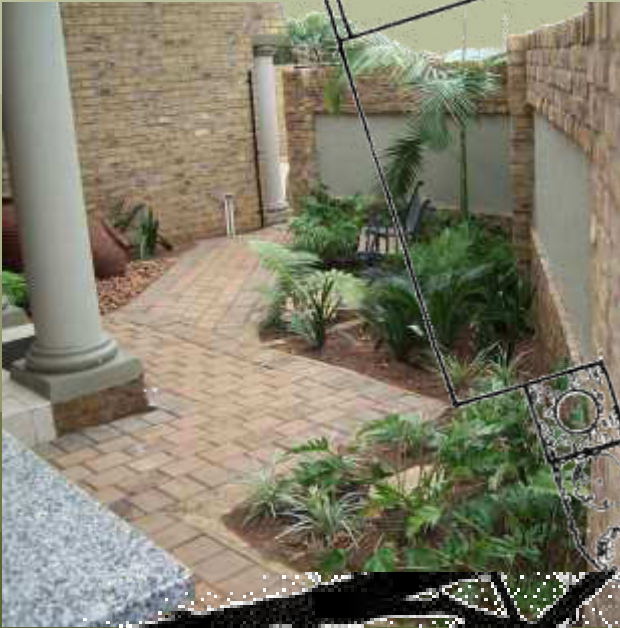
Bokamoso

05 Landscape Projects - Completed

055 Residential



# 015 Forest Garden, Pretoria



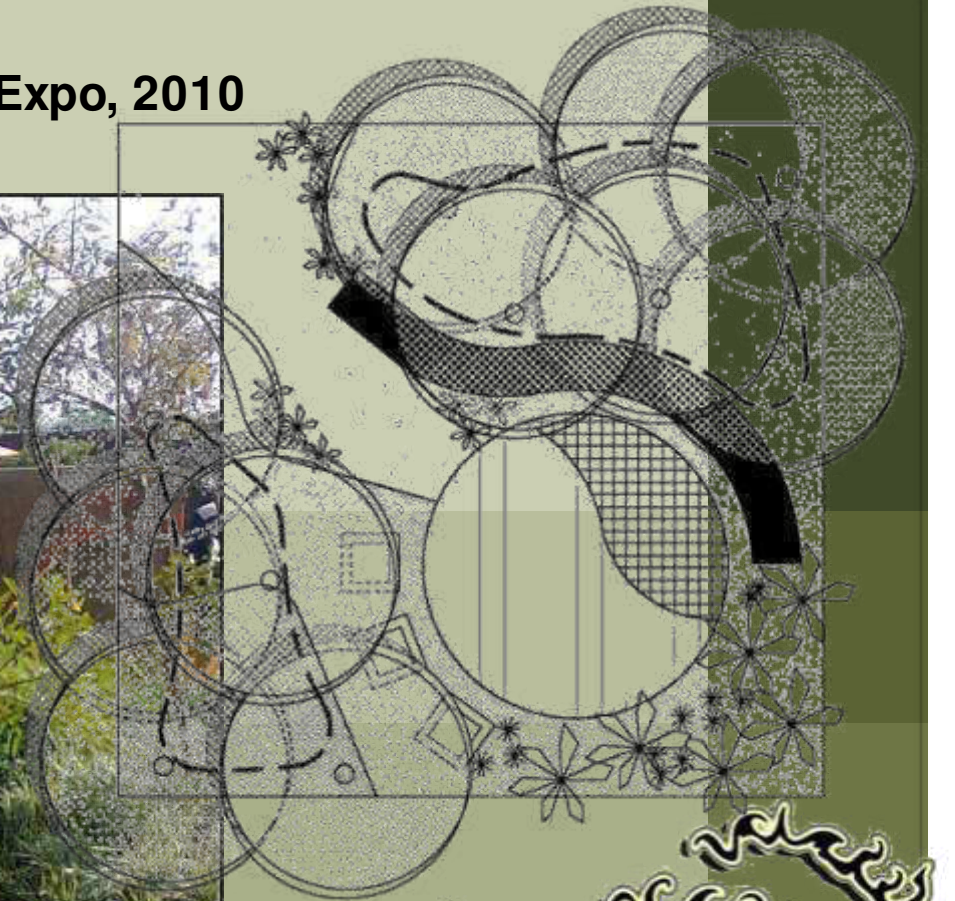
*Bokamoso*

**05** Landscape Projects - Completed

**055** Residential

## 01 Safari Garden Expo

Received a Silver Certificate at the Safari Garden Expo, 2010



*Bokamoso* 

06 Corporate Highlights

061 Awards

## **02 UNISA Sunnyside Campus, Pretoria**

**Best Commercial Paving Plan in Gauteng, 1997**



**06 Corporate Highlights**

**061 Awards**

Project Name	Status	Project
<b>Environmental Impact Assessment(EIA) and Scoping Report</b>		
Junction 21	ROD	EIA
5 O'clock site access	In Progress	EIA
Bokamoso X 1	In Progress	Scoping & EIA
Doornvallei Phase 6 & 7	In Progress	EIA
Engen Interchange	In Progress	Scoping & EIA
Erasmia X15	In Progress	EIA
Franschklouf	In Progress	EIA
K113	Amendment of ROD	EIA
K220 East	ROD	EIA
K220 West	ROD	EIA
K54 ROD conditions	In Progress	EIA
Knopjeslaagte 95/Peachtree	ROD	EIA
Knopjeslaagte portion 20 & 21	ROD	EIA
Lillieslief/Nooitgedacht	In Progress	EIA
Mooiplaats 70 (Sutherland)	In Progress	EIA
Naauwpoort 1 - 12/Valley View	In Progress	EIA
PeachTree X5	In Progress	EIA
Strydfontein 60	In Progress	EIA
Thabe Motswere	In Progress	Scoping & EIA
Vlakplaats	In Progress	EIA
Waterval Valley	In Progress	EIA
<b>Environmental Opinion</b>		
Doornkloof 68 (Ross)	In Progress	Opinion
Monavoni X 53	In Progress	BA & Opinion
Mooikloof (USN)	In Progress	Opinion
Norwood Mall/Sandspruit	In Progress	Opinion
Riversong X 9	In Progress	Opinion
Sud Chemie	In Progress	Opinion
USN Benjoh Fishing Resort	In Progress	Opinion



The adjacent list host the status of our current projects. Only a selected amount of projects are displayed.



**07 Current Environmental Projects**

**071 EIA, Scoping & Opinion**

Project Name	Status	Project
<b>Basic Assessment(BA)</b>		
Annlin X 138	In Progress	BA
Clubview X 29	ROD	BA
Darrenwood Dam	In Progress	BA
Durley Holding 90 & 91	In Progress	BA
Elim	In Progress	BA
Fochville X 3	In Progress	BA
Hartebeeshoek 251	In Progress	BA
Klerksdorp (Matlosana Mall)	In Progress	BA
Monavoni External Services	ROD	BA
Monavoni X 45	Amendment of ROD	BA
Montana X 146	In Progress	BA
Rooihuiskraal X29	In Progress	BA
Thorntree Mall	In Progress	BA

<b>Environmental control officer (ECO)</b>		
Grace Point Church	In Progress	ECO
R 81	In Progress	ECO
Highveld X 61	In Progress	ECO
Mall of the North	In Progress	ECO
Olievenhoutbosch Road	In Progress	ECO
Orchards 39	In Progress	ECO
Pierre van Ryneveld Reservoir	In Progress	ECO
Project Shelter	In Progress	ECO

<b>S24 G</b>		
Wonderboom	In Progress	S24 G
Mogwasi Guest houses	Completed	S24 G



**07 Current Environmental Projects**

**072 BA, ECO & S24 G**

Project Name	Status	Project
<b>Objection</b>		
Colesberg WWTW	In Progress	Objection
Nigel Steelmill	Completed	Objection
Chantilly Waters	Completed	Objection

<b>Development facilitation Act- Input (DFA)</b>		
Burgersfort	In Progress	DFA & BA
Doornpoort Filling Station	In Progress	DFA & EIA & Scoping
Eastwood Junction	In Progress	DFA
Ingersol Road (Erf 78, 81 - 83)	In Progress	DFA
Roos Senekal	In Progress	DFA & EIA & Scoping
Thaba Meetse 1	In Progress	DFA & EIA & Scoping

<b>Water Use License Act (WULA)</b>		
Britstown Bulk Water Supply	In Progress	WULA
Celery Road / Green Channel	In Progress	WULA
Clayville X 46	In Progress	WULA
Dindingwe Lodge	In Progress	WULA
Doornpoort Filling Station	In Progress	WULA+DFA+EIA+SC
Eco Park Dam	In Progress	WULA
Groote Drift Potch	In Progress	WULA
Jozini Shopping Centre	In Progress	WULA+BA
K60	Completed	WULA
Maloto Roads	In Progress	WULA
Kwazele Sewage Works	In Progress	WULA
Monavoni External Services	In Progress	WULA+BA
Nyathi Eco Estate	In Progress	WULA
Prairie Giants X 3	In Progress	WULA
Waveside Water Bottling Plant	Completed	WULA



**07 Current Environmental Projects**

**073 Objection, DFA & WULA**

Project Name	Status	Project
<b>Environmental Management Plan(EMP)</b>		
Heidelberg X 12	ROD	EMP
Monavoni Shopping Centre	Completed	EMP
Forest Hill Development	Completed	EMP
Weltevreden Farm 105KQ	Completed	EMP+EIA
Raslouw Holding 93	Completed	EMP+BA
Durley Development	Completed	EMP+BA
Rooihuiskraal North X 28	Completed	EMP

<b>Rehabilitation Plan</b>		
Norwood Mall/Sandspruit	In Progress	Rehabilitation
Project Shelter Heidelberg	In Progress	Rehabilitation
Sagewood Attenuation Pond	ROD	Rehabilitation
Velmore Hotel	Completed	Rehabilitation
Grace Point Church	Completed	Rehabilitation
Mmamelodi Pipeline	Completed	Rehabilitation

<b>Visual Impact Assessment</b>		
Swatzkop Industrial Developme	Completed	Assessment +DFA
Erasmia	Completed	Assessment

<b>Signage Application</b>		
Menlyn Advertising	Completed	Signage
The Villa Mall	Completed	Signage+EMP+BA



## 07 Current Environmental Projects

074 EMP, Rehabilitation , Waste Management & Signage Application

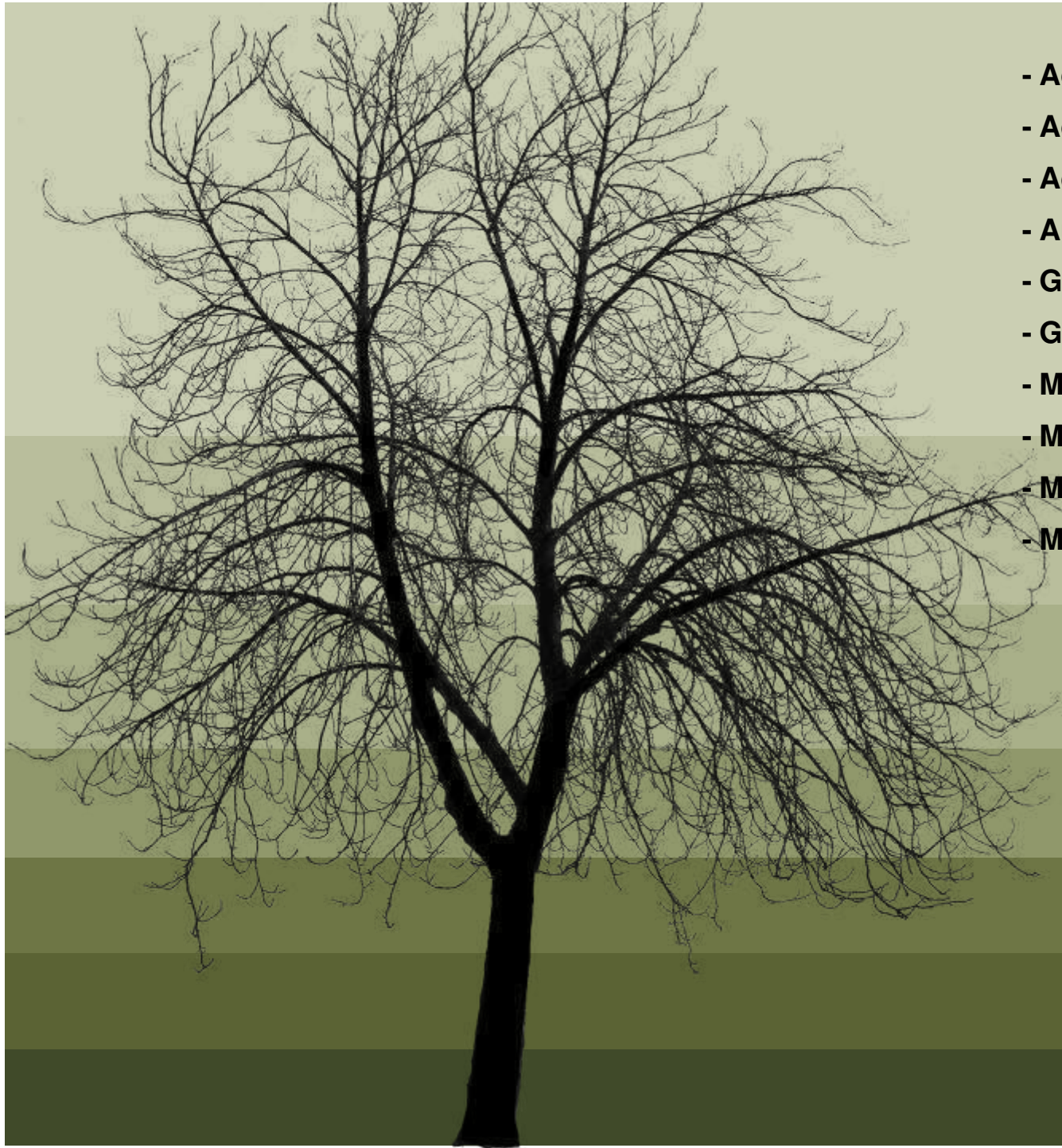
- Billion Property Group
- Cavaleros Developments
- Centro Developers
- Chaimberlains
- Chieftain
- Century Property Group
- Coca Cola
- Elmado Property Development
- Flanagan & Gerard
- Gautrans
- Hartland Property Group
- Moolman Group
- MTN
- M&T Development
- Old Mutual
- Property Investment Company
- Petroland Developments
- RSD Construction
- SAND
- Stephan Parsons
- Twin City Developments
- Urban Construction
- USN



**08** Indicative Clients







- Adobe Illustrator CS3
- Adobe Photoshop CS3
- Adobe InDesign CS3
- AutoCAD
- Google SketchUP
- GIS
- Microsoft Office Word
- Microsoft Office Excel
- Microsoft Office Publisher
- Microsoft Office Power Point

*Bokamoso* 

# Qualifications And Experience In The Field Of Environmental Planning And Management (Lizelle Gregory (Member Bokamoso)):

## Qualifications:

- Qualified as **Landscape Architect** at UP 1991;
- Qualified as **Professional Landscape Architect in 1997**;
- A Registered Member at The **South African Council for the Landscape Architect Profession (SACLAP)** with Practise Number: **PrLArch97078**;
- A Registered Member at the **International Association for Impact Assessment Practitioners (IAIA)**;
- Qualified as an **Environmental Auditor in July 2008** and also became a Member of the International Environmental Management Association (IEMAS) in 2008.

## Working Experience:

- Worked part time at Eco-Consult – 1988-1990;
- Worked part time at **Plan Associates as Landscape Architect in training** – 1990-1991;
- Worked as Landscape Architect at **Environmental Design Partnership (EDP)** from 1992 - 1994
- Practised under **Lizelle Gregory Landscape Architects** from 1994 until 1999;
- Lectured** at Part-Time at **UP** (1999) – Landscape Architecture and **TUT** (1998- 1999)- Environmental Planning and Plant Material Studies;
- Worked as **part time Landscape Architect and Environmental Consultant at Plan Associates** and **managed their environmental division for more than 10 years** – 1993 – 2008 (assisted the **PWV Consortium** with various road planning matters which amongst others included environmental Scans, EIA's, Scoping reports etc.)
- Renamed business as **Bokamoso in 2000** and is the only member of Bokamoso Landscape Architects and Environmental Consultants CC;
- More than 25 years experience in the compilation of Environmental Reports**, which amongst others included the compilation of various **DFA Regulation 31 Scoping Reports**, EIA's for EIA applications in terms of the applicable environmental legislation, Environmental Management Plans, Inputs for Spatial Development Frameworks, DP's, EMF's etc. Also included EIA Application on and adjacent to mining land and slimes dams (i.e. Brahm Fisherville, Doornkop)

# Qualifications And Experience In The Field Of Landscape Architecture (Lizelle Gregory (Member Bokamoso)):

## Landscape Architecture:

-Compiled landscape and rehabilitation plans for more than 22 years.

### The most significant landscaping projects are as follows:

-Designed the Gardens of the Witbank Technicon (a branch of TUT). Also supervised the implementation of the campus gardens (2004);

-Lizelle Gregory was the Landscape Architect responsible for the paving and landscape design at the UNISA Sunnyside Campus and received a Corobrick Golden Award for the paving design at the campus (1998-2004);

-Bokamoso assisted with the design and implementation of a park for the City of Johannesburg in Tembisa (2010);

-The design and implementation of the landscape gardens (indigenous garden) at the new Coca-Cola Valpre Plant (2012-2013);

-Responsible for the rehabilitation and landscaping of Juksei River area at the Norwood Shopping Mall (Johannesburg) (2012-2013);

-Designed and implemented a garden of more than 3,5ha in Randburg (Mc Arthurpark). Bokamoso also seeded the lawn for the project (more than 2,5 ha of lawn successfully seeded) (1999);

-Bokamoso designed and implemented more than 800 townhouse complex gardens and submitted more than 500 Landscape Development Plans to CTMM for approval (1995 – 2013);

-Assisted with Landscape Designs and the Masterplan at Eco-Park (M&T Developments) (2005-2011);

-Bokamoso designed and implemented an indigenous garden at an office park adjacent to the Bronberg. In this garden it was also necessary to establish a special garden for the Juliana Golden Mole. During a recent site visit it was established that the moles are thriving in this garden. Special sandy soils had to be imported and special indigenous plants had to be established in the natural section of the garden.

-Lizelle Gregory also owns her own landscape contracting business. **For the past 20 years she trained more than 40 PDI jobless people (sourced from a church in Mamelodi)** to become landscape contracting workers. All the workers are (on a continuous basis) placed out to work at nurseries and other associated industries;

-Over the past 20 years the Bokamoso team compiled more than 800 landscape development plans and also implemented most of the gardens. Bokamoso also designed and implemented the irrigation for the gardens (in cases where irrigation was required). Lizelle regarded it as important to also obtain practical experience in the field of landscape implementation.