

**Background Information Document
as part of the Basic Assessment for the
Proposed Workshop Expansion at
20 Manchester Road (Erf 1983 of portion 10), Pinetown,
eThekweni Municipality**

EIA reference: DM/0025/2013

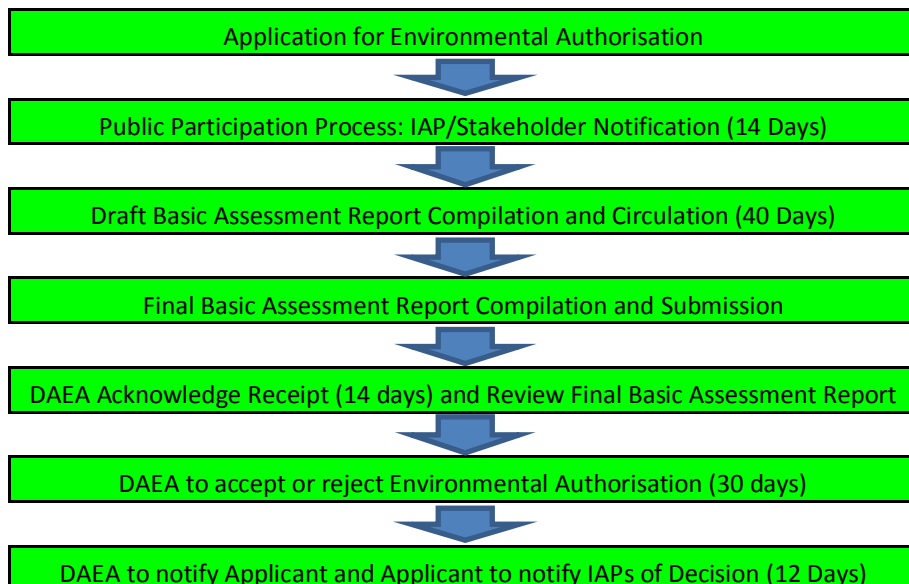
Applicant:	Environmental Consultants:
	
Rotacon Engineering cc	Enviroedge cc PO BOX 1009, Kloof, 3640 Tel:(031) 764 2569 Fax: (086) 654 6598 info@enviroedge.co.za www.enviroedge.co.za

What is the Background Information Document about?

As part of the Basic Assessment and Public Participation Process, the Background Information Document (BID) serves to inform all authorities, stakeholders, and Interested and/or Affected Parties (IAPs) of the applicant's proposed workshop expansion located at 20 Manchester Road, Pinetown. The BID provides interested and affected parties an opportunity to submit any issues or concerns relating to the biophysical or socio-economic environment.

The Basic Assessment Process

The proposed workshop expansion requires an Application for Environmental Authorisation in terms of Environmental Impact Assessment Regulations of 2010 (Regulations in terms of Chapter 5 of the National Environmental Management Act, 1998, as amended). As such an application has been lodged with the KwaZulu-Natal Department of Agriculture and Environmental Affairs and a Basic Assessment is being undertaken by Enviroedge. The Basic Assessment process is summarised below.



Public Participation Process

The Public Participation Process (PPP) forms part of the Basic Assessment process, and helps to ensure that IAPs have an opportunity to participate throughout the process by providing comments or concerns. Members of the public have the right to be informed of decisions that affect them. IAPs are provided with an opportunity during this process to provide their issues or concerns regarding the proposed development.

The Project

Rotacon Engineering cc is a light to medium general mechanical engineering workshop facility, which manufactures industrial machinery spare parts and also undertakes complete machine building. The existing workshop covers an area of approximately 3 000m². Owing to the size of machinery utilised during the manufacturing processes, together with an increase in operations, floor space has become limited and working areas congested. Rotacon has, therefore, proposed a workshop expansion of 3 000m². The expansion would involve the extension of the existing workshop onto a lower platform, to the east of the site, below the existing factory building, within 32 metres of the Palmiet River. The expansion site is previously disturbed and is currently utilised as a storage and parking area. Please refer to Figure 1 which illustrates the proposed workshop expansion area. The project site is located at 29°48'14.53"S 30°52'11.12"E.

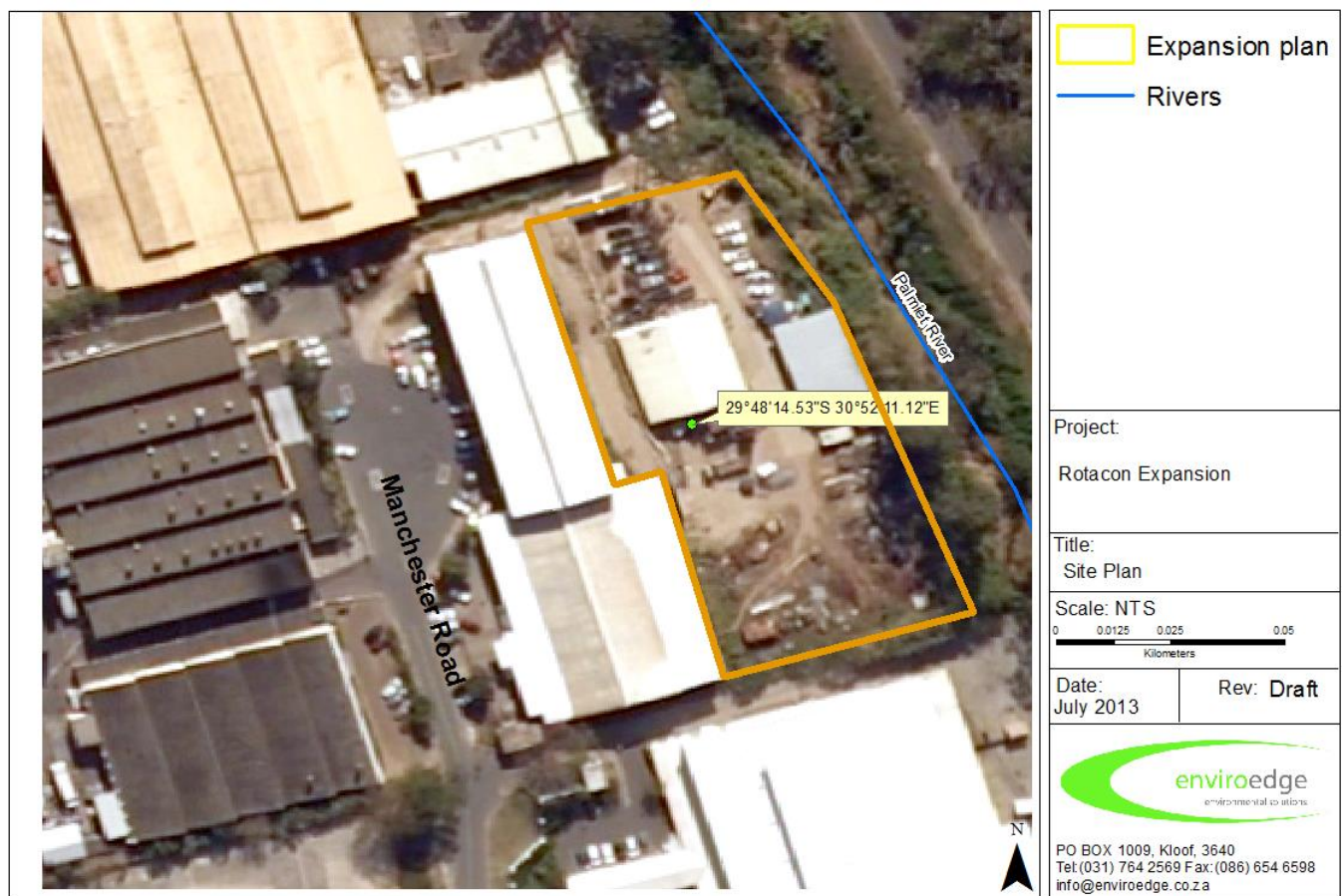


Figure 1. Proposed Workshop Expansion Site Plan

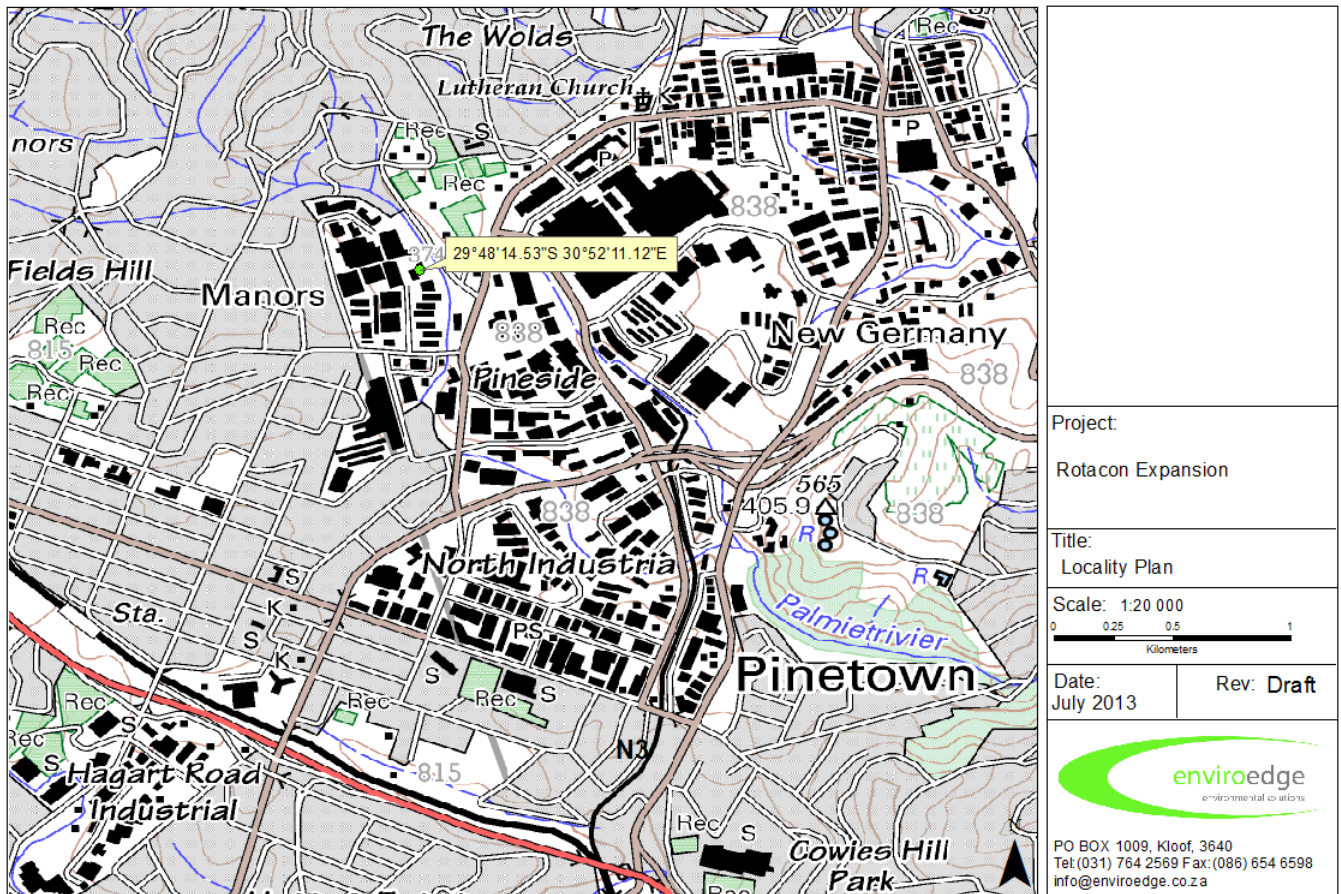


Figure 2. Locality Plan

Climate

The study area falls within the KwaZulu-Natal Coastal Belt (CB3), and experiences mostly summer rainfall with some rain during the winter months. The region experiences high humidity with no incidence of frost. The mean maximum and minimum temperatures are 32.6 C and 5.8 C (Mucina and Rutherford, 2006).

Topography and Watercourses

The proposed workshop expansion is situated on level ground where platforms have been created along the edge of the Palmiet River. The Palmiet River flows to the east of the site in a generally north-south direction, and continues to meander through the periphery of Pinetown eastern outskirts and down on towards Westville in the east. The site is situated at approximately 330 masl.

Geology and Soils

The typical geology is described as Ordovician Natal Group sandstone, Dwyka tillite, Ecca shale and Mapumulo gnieis which dominate the kwaZulu-Natal Landscapes. Weathering of old dunes has produced the Berea Red Sand in places.

Vegetation

The proposed site is for the most part disturbed and altered from its natural state. Sections of grassed lawn and hard surfaces exist across most of the proposed expansion area. Some *Eucalyptus* sp. (Gum trees), *Strelitzia* sp were noted along the eastern boundary, with reed vegetation and significant weed investation. The site is situated along the western edge of the KwaZulu-Natal Coastal Belt (CB3) Bioresource group. The Palmiet River system situated to the immediate east of the site forms part of the

Durban Metropolitan Open Space System (D'MOSS). The Ezemvelo KZN Wildlife Terrestrial Systematic Conservation Plan (TSCP) allocates the study area a Biodiversity Priority Area 1 status.

Services

The site is accessed from 20 Manchester Road, a cul-de-sac which branches to the north off Crompton Street. The site is fully serviced with electricity, water and links into the municipal waterborne sewage system. The required availability of additional service supply capacity will be considered as part of the environmental process for the proposed Rotacon factory expansion. The site is currently zoned as light industrial.

Register as an Interested and/or Affected Party

Members of the public have the right to be consulted during the Public Participation Process. If you would like to be part of this process, or wish to comment or make contributions regarding specific guidelines, legislation or regulations that are specific to your organisation, please register with the environmental consultant using the contacts details provided before the **20th August 2013**.