

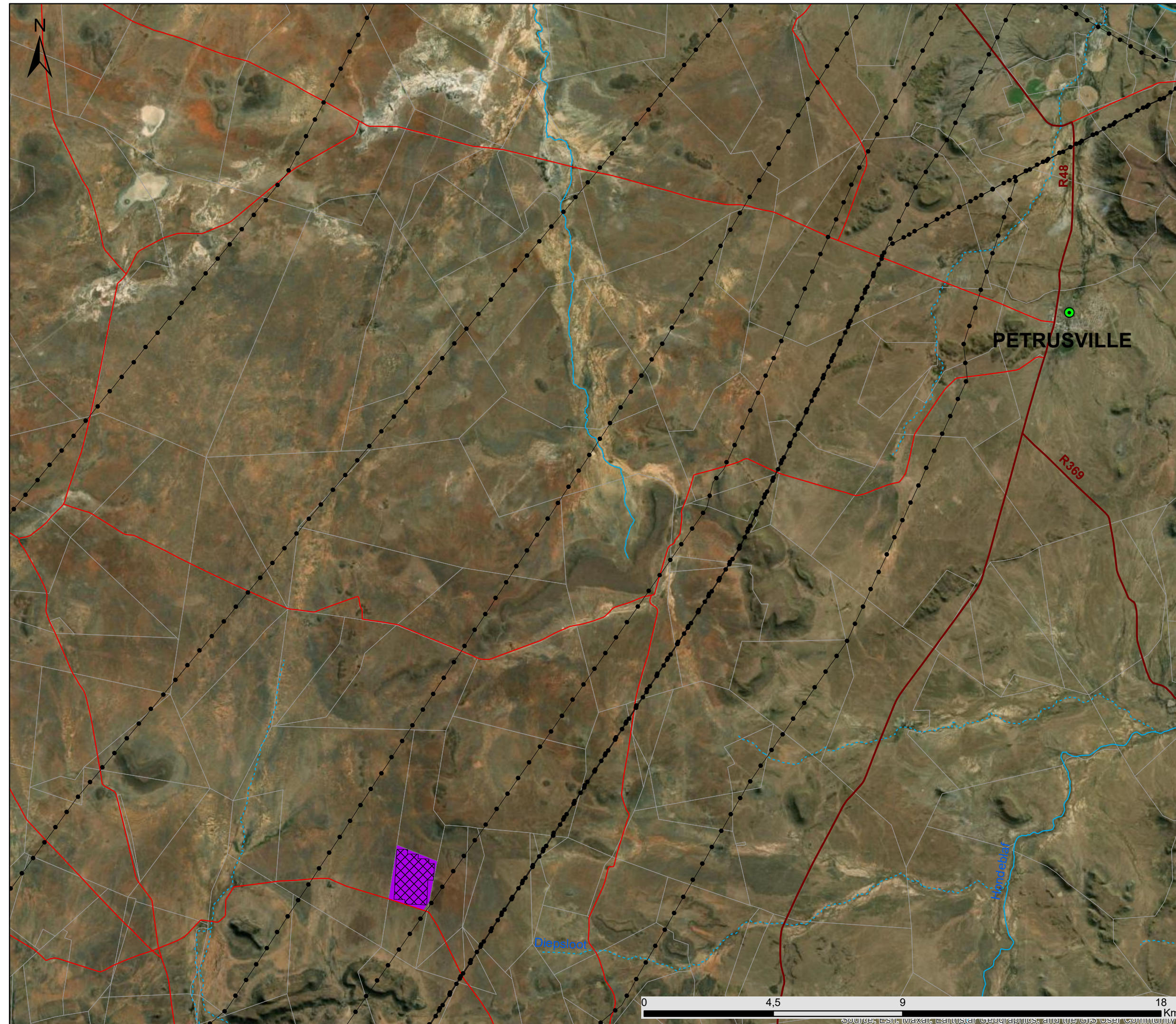


# Ruspoot 2 Solar PV Facility Crossroads Green Energy Cluster Northern Cape Province

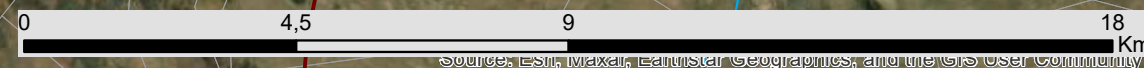
## Locality Map

### Legend

-  Town
-  Eskom Substation
-  Existing Power Line
-  National Road
-  Regional Road
-  Main Road
-  Non-perennial River
-  Perennial River
-  Ruspoot 2 Solar PV Facility Proposed Footprint
-  Ruspoot 2 Solar PV Facility Development Area
-  Farm Portions



Scale: 125 000  
Projection: GCS\_WGS\_1984  
Map Ref: Crossroads Green Energy Cluster



Source: Esri, Maxar, Earthstar Geographics, and the GIS User Community

# Crossroads Green Energy Cluster Northern Cape Province

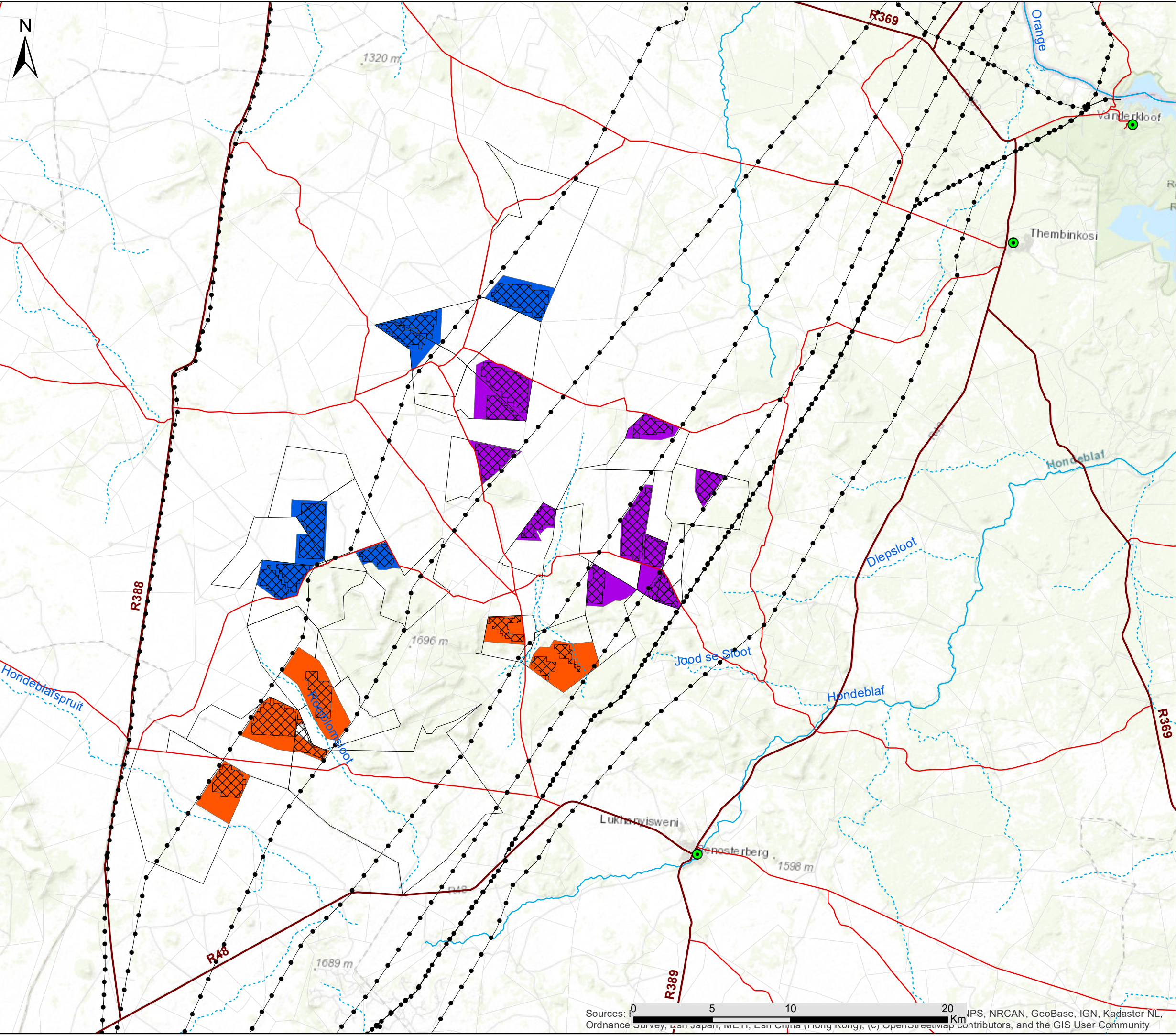
## Locality Map

### Legend

-  Town
-  Eskom Substation
-  Existing Power Line
-  National Road
-  Regional Road
-  Main Road
-  Non-perennial River
-  Perennial River
-  Phase 1 Solar Facilities
-  Phase 2 Solar Facilities
-  Phase 3 Solar Facilities
-  Affected Farm Portion



Scale: 230 000  
 Projection: GCS\_WGS\_1984  
 Map Ref: Hydra B Renewable Energy Cluster



Sources: 0 5 10 20 km  
 IPS, NRCAN, GeoBase, IGN, Kadaster NL, Ordnance Survey, Esri Japan, METI, Esri China (Hong Kong), (c) OpenStreetMap contributors, and the GIS User Community

# Crossroads Green Energy Cluster Northern Cape Province

## Cumulative Map

### Legend

- 30 km radius
- 50 km radius
- Phase 1 Solar Facilities
- Phase 2 Solar Facilities
- Phase 3 Solar Facilities
- Affected Farm Portion

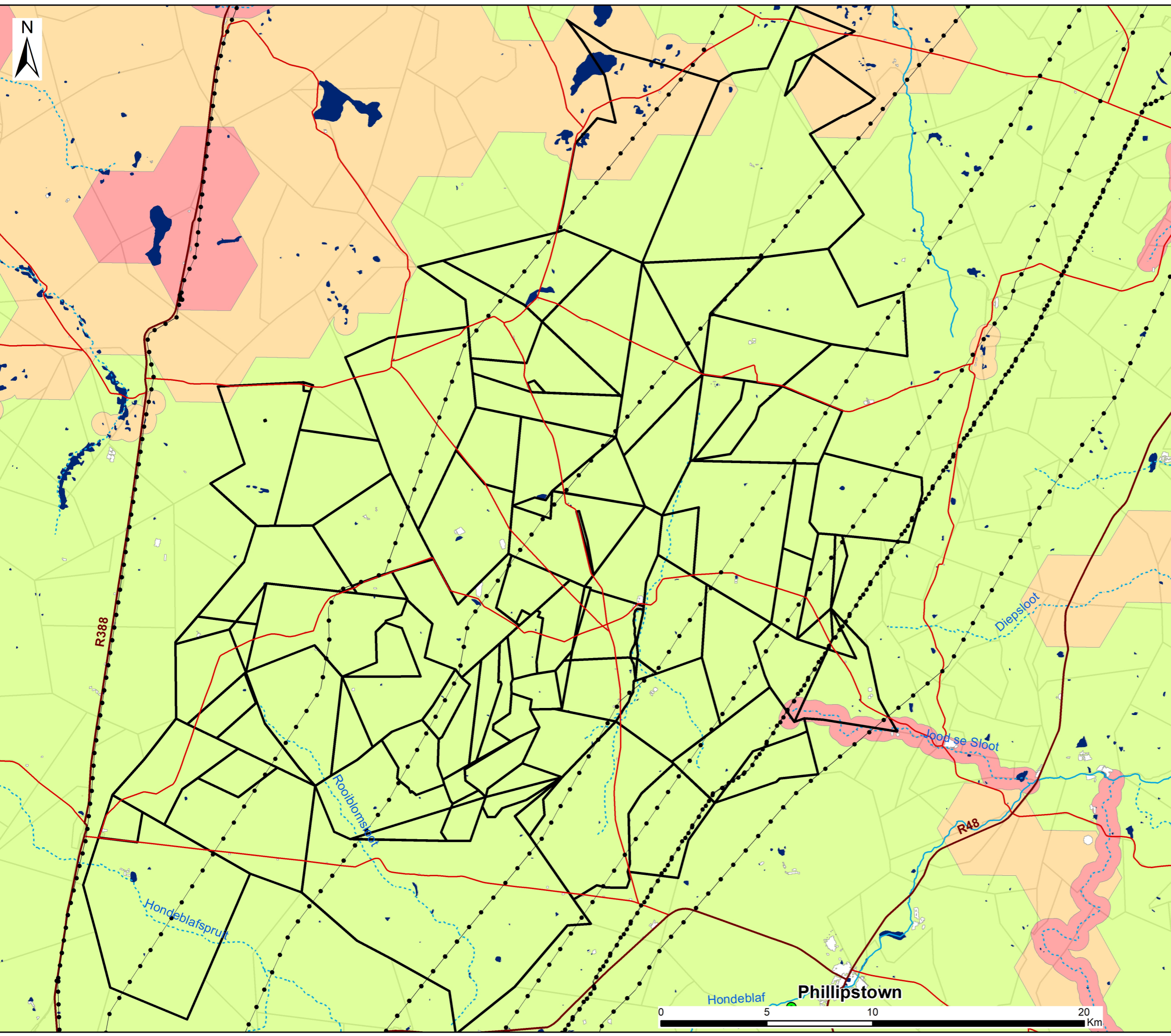
### Other Renewable Energy Developments within 50km of the Hydra B Cluster

- 300MW Solar Power Plant in Phillipstown (Approved)
- 70 - 100 MW Solar Power Plant in Petrusville (In Progress)
- Castle wind energy facility project (In Process)
- Proposed PV facility on farm Blaauwkratz near De Aar (In Process)
- PV facility on farm Caroluspoot near De Aar (Approved)
- PV facility on farm Jakhalsfontein near De Aar (Approved)
- Solar Capital ( PV facility on farm Loskop (In Process)
- Renosterberg PV power plant (Approved)
- Solar Power Generation Facility on the farm Vetlaagte 4 (Approved)
- Swartwater 75MW solar PV power facility (Approved)
- Ilanga Lethemba 2 PV energy facility (In Process)
- PV facility on farm Blaauwkratz near De Aar (In Process)
- Renewable energy farm on portion 5 of farm Kleinplaas No. 193 (In Process)
- 75-150mw Photovoltaic Solar Energy Facility on Paarde Valley Farm (Approved)
- Photovoltaic (Pv) Plant On Portion 29 Of The Farm Paarde 145 (In Process)
- ACED Renewables De AarSolar Energy Facility (Approved)
- The Proposed Construction Of Ilanga Lethemba Pv Solar Energy Facility
- Photovoltaic (Solar) Energy Facilities On Du Plessis Dam Farm (In Process)
- Renosterberg Wind Energy Facility (Approved)
- The Mulilo De Aar 2 South (Pty) Ltd Wind Energy Facility (Approved)
- 75MW PV SEF on the Remaining Extent of the Farm Vetlaagte 4 (Approved)
- Scatec Solar Photovoltaic Farms (Approved)

Scale: 300 000  
 Projection: WGS\_GCS\_1984  
 Map Ref: Crossroad Green Energy Cluster



Sources: Esri, HERE, Garmin, Intermap, increment P Corp., GEBCO, USGS, FAO, NPS, NRCAN, Geobase, IGN, Radaster NL, Ordnance Survey, Esri Japan, METI, Esri China (Hong Kong), (c) OpenStreetMap contributors, and the GIS User Community



# Hydra B Renewable Energy Cluster Northern Cape Province

## Sensitivity Map

### Legend

- Town
- Non-perennial River
- Perennial River
- Existing Power Line
- Regional Road
- Main Road
- Hydra B Renewable Energy Cluster

### Environmental Sensitivities

- NFEPA Wetlands
- Critical Biodiversity Area One
- Critical Biodiversity Area Two
- Ecological Support Area



Scale: 1:170 000  
 Projection: LO19  
 Map Ref: Hydra B Renewable Energy Cluster

