

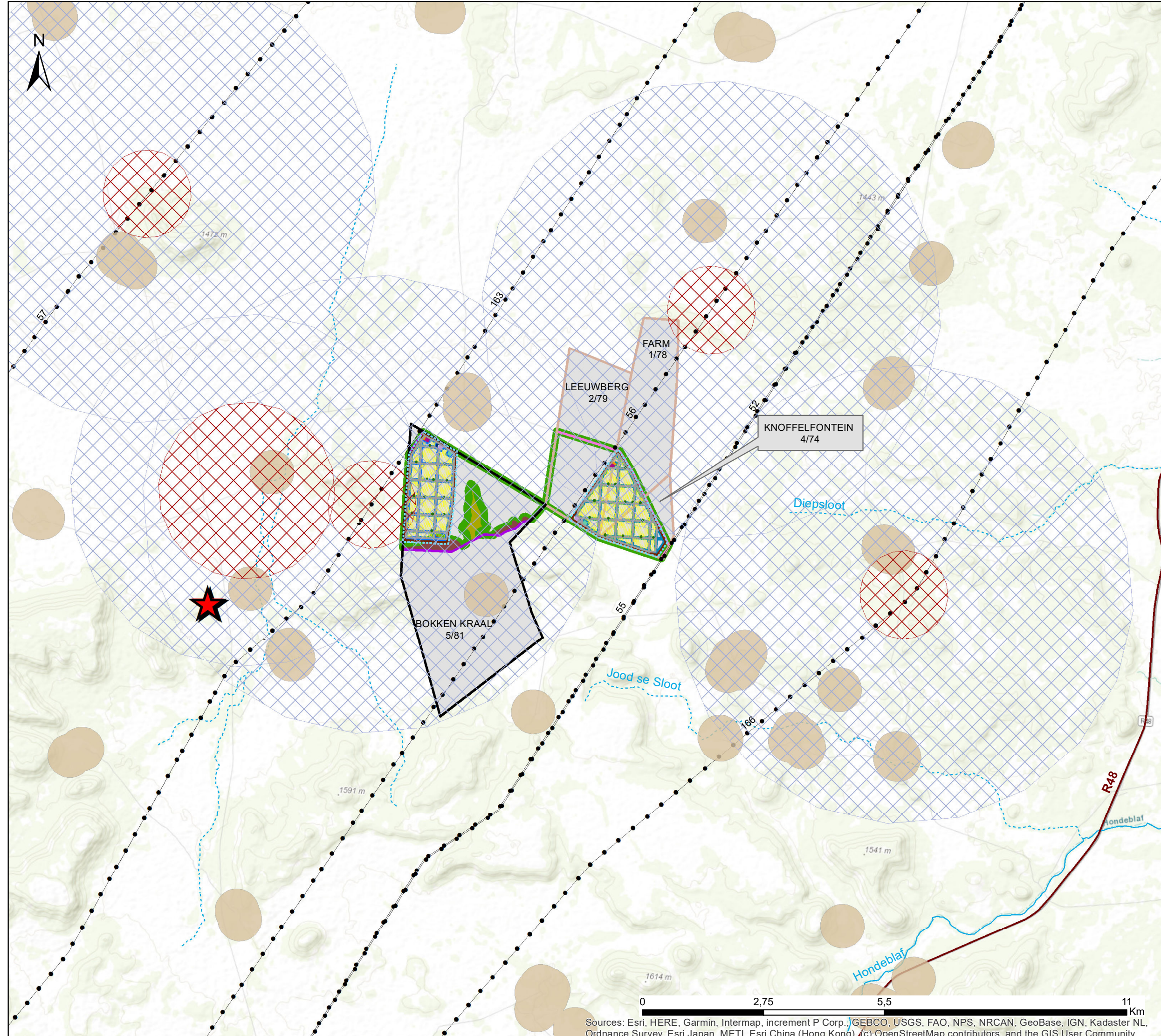
# Crossroads Green Energy Ruspoort 1 Solar PV Facility Northern Cape Province

## Layout & Sensitivity Map

### Legend

- Transmission Lines
- Regional Road
- Non-perennial River
- Perennial River
- Facility Layout**
- Internal Roads
- Power Stations
- Fire Break (50m)
- Facility Fenceline
- On-Site Substation
- BESS
- Office and Storage
- Laydwn Area
- Parking Area
- Solar PV Arrays
- Development Footprint - Option A
- Development Area - Option A
- Project Site - Option A
- Development Footprint - Option B
- Development Area - Option B
- Project Site - Option B
- Affected Properties
- Heritage Sensitivities**
- Heritage Resources - Moderate Sensitivity
- No-go Areas
- Avifauna Sensitivities**
- Nest buffers 2km - No Go areas
- Nest buffers - Low Sensitivity
- Visual Sensitivities**
- Residences - Moderate Sensitivity
- Terrestrial Ecology Sensitivities**
- Karoo Grassland - Medium Sensitivity
- Drainage features - Medium Sensitivity
- Koppies Shrubland - High Sensitivity

Scale: 80 000  
 Projection: WGS\_GCS\_1984  
 Map Ref: Crossroad Green Energy Cluster Ruspoort 1



Sources: Esri, HERE, Garmin, Intermap, increment P Corp., GEBCO, USGS, FAO, NPS, NRCAN, GeoBase, IGN, Kadaster NL, Ordnance Survey, Esri Japan, METI, Esri China (Hong Kong), (c) OpenStreetMap contributors, and the GIS User Community