



NOTIFICATION OF PUBLIC PARTICIPATION PROCESS FOR PROPOSED CONSTRUCTION OF A CORE SHED, ROAD AND ASSOCIATED INFRASTRUCTURE ON THE FARM HEUNINGKRAANZ 364, NORTHERN CAPE.

This Background Information Document (BID) provides interested and affected parties (IAP) with information on the proposed project and invites them to participate in the public consultation process of the Environmental Basic Assessment (BA) process.

You are invited to register as an IAP for the proposed projects at the farms Heuningkraan 364 and Langverwacht 342, near Postmasburg, Northern Cape.

You are requested to raise concerns and ask questions about this project. Please complete and return to Synergistics Environmental Services **before 29 January 2014**. There will be additional opportunities in the future for you to participate and provide comments.

Please complete the project specific registration / comment sheet and send to:

Henk Botha

Synergistics Environmental Services

Tel: 011 326 4158

Fax: 011 326 4118

Post: P.O. Box 68821,
Bryanston, 2021

Email: hbotha@slrconsulting.com



Background Information Document

ENVIRONMENTAL ASSESSMENT PROCESS THAT INCLUDES: CONSTRUCTION OF A CORE SHED, ROAD AND ASSOCIATED INFRASTRUCTURE ON THE FARMS HEUNINGKRAANZ 364 AND LANGVERWACHT 342, POSTMASBURG, NORTHERN CAPE.

December 2013

Sibelo Resources (Pty) Ltd (Sibelo) is proposing to undertake the following new activities on Heuningkraan 364 and Langverwacht 342, located approximately 24 km south west of Postmasburg in the Northern Cape Province:

- Construction of a core shed and associated infrastructure within adjacent to the existing infrastructure on the farm Heuningkraan.
- Construction of a new access road to the infrastructure from the R385 across the Farm Langverwacht (Portions 1 and 2);
- Construction of a reservoir and pipeline to supply additional water if required to the infrastructure on the farm Langverwacht (Portion 1).

PURPOSE OF DOCUMENT

Synergistics Environmental Services (Pty) Ltd has been appointed as the independent environmental assessment practitioners responsible for undertaking the processes required for the application for environmental authorisation (EA) of the proposed developments.

This document forms part of the required public participation process for the project and serves to:

- Inform you as a potential interested or affected party (IAP) about the environmental basic assessment processes required for the authorisation of the new activities.
- Provide background information about the activities.
- Present the purpose and methodology of a Basic Environmental Impact Assessment.
- Describe opportunities for you to participate in the environmental authorisation processes.

Registered IAPs will be given an opportunity to raise their concerns regarding the project and be provided with an opportunity to review the environmental reports.

PROJECT DESCRIPTION

Sibelo undertakes prospecting on behalf of the Sishen Iron Ore Company (Pty) Ltd in the Northern Cape. In order to support these activities, Sibelo plans to build new infrastructure in the vicinity of the existing farmhouse on the Farm Heuningkranz 364. This infrastructure includes: a new core shed, temporary offices, roads and parking. The existing farmhouse and associated infrastructure will also be used by Sibelo in support of their prospecting work. The future plan is also to construct a new access road to the infrastructure at Heuningkranz from the R385. This road will cross the Farm Langverwacht 342 (Portions 1 and 2) also owned by Sishen Iron ore Company.

The decision to develop the infrastructure at Heuningkranz was motivated for a need for a central location from which to operate the Sibelo prospecting activities. Use will be made of the existing infrastructure on the farm and new infrastructure will be developed in close proximity to such infrastructure.

Unfortunately, the current farmhouse was historically built with the flood line, adjacent to the river. As such the future infrastructure is also within the flood line, necessitating an environmental assessment.

In addition, provision has been made for the assessment of the development of a water reservoir and water supply pipeline, should additional water be required to facilitate the activities. Such a reservoir would be constructed on the farm Langverwacht

ENVIRONMENTAL LEGAL PROCESSES

National Environmental Management Act and EIA Regulations

EIA regulations have been published (Government Notices R543 to R546) in terms of the National Environmental Management Act (No 107 of 1998). Activities listed in the EIA regulations require authorisation from Northern Cape Department of Environmental Affairs and Nature Conservation (DENC) prior to commencement.

The table below indicates activities that require authorisation in terms of the EIA Regulations.

Number of Notice	Activity Number	Activity Description
GNR 544 Listing Notice 1: Activities requiring an environmental authorisation subject to a basic assessment for the <u>Core Shed, Road and Associated infrastructure</u>		
GNR 544 (Listing Notice 1)	9	<p>The construction of facilities or infrastructure exceeding 1000 meters in length for the bulk transportation of water, sewage or storm water</p> <p>i) With an internal diameter of 0.36 m or more; or</p> <p>ii) With a peak throughput of 120 liters per second or more</p> <p>Reason: A pipeline will be constructed for the transportation of water on the farms Heuningkranz and Langverwacht.</p>
GNR 544 (Listing Notice 1)	11	<p>The construction of:</p> <p>i. canals;</p> <p>ii. channels;</p> <p>iii. bridges;</p> <p>iv. dams;</p> <p>v. weirs;</p> <p>vi. bulk storm water outlet structures;</p> <p>vii. marinas;</p> <p>viii. jetties exceeding 50 square metres in size;</p> <p>ix. slipways exceeding 50 square metres in size;</p> <p>x. buildings exceeding 50 square</p>

		metres in size; or xi. <u>infrastructure or structures covering 50 square metres or more</u> <u>Where such construction occurs within a watercourse or within 32 metres of a watercourse, measured from the edge of a watercourse, excluding where such construction will occur behind the development setback line.</u> Reason: Infrastructure exceeding 50 m² will be constructed within the ephemeral watercourse on the Farm Heuningkranz 364.
GNR 544 (Listing Notice 1)	12	<u>The construction of facilities or infrastructure for the off-stream storage of water, including dams and reservoirs with a combined capacity of 50 000 cubic metres or more, unless such storage falls under the ambit of activity 19 of Notice 545 of 2010.</u>
GNR 544 (Listing Notice 1)	18	The infilling or depositing of any material of more than 5 cubic metres into, or the dredging, excavation, <u>removal or moving of soil, sand, shells, shell grit, pebbles or rock or more than 5 cubic metres from:</u> i. <u>a watercourse;</u> Reason: The construction of the core shed and associated infrastructure will involve the removal of soil, sand, pebbles and rocks of more than 5 cubic metres from the watercourse.
GNR 544 (Listing Notice 1)	22	The construction of a road, outside urban areas- i. With a reserve wider than 13.5 meters or; ii. <u>Where no reserve exists where the road is wider than 8 meters;</u> or iii. For which an environmental authorisation was obtained for the route determination in terms of activity 5 in Government Notice 387 of 2006 or activity 18 in Notice 545 of 2010. Reason: Roads with a width of more than 8 meters will be constructed on the Farms Heuningkranz 364 and Langverwacht 432.
GNR 544 (Listing Notice 1)	23	The transformation of undeveloped, vacant or derelict land to – i) Residential, retail, commercial, recreational, industrial or institutional use, inside an urban area, and where the total area to be transformed is 5 hectares or more, but less than 20 hectares; or ii) Residential, retail, commercial, recreational, <u>industrial or institutional use, outside an urban area, and where the total area to be transformed is bigger than 1 hectares but less than 20 hectares</u> Reason: The development will result in the transformation of undeveloped land.

GNR 544 (Listing Notice 1)	40	<u>The expansion of</u> i) Jetties by more than 50 square metres; ii) Slipways more than 50 square metres; iii) <u>Buildings by more than 50 square meters; or</u> iv) <u>Infrastructure by more than 50 meters square</u> Within a watercourse or within 32 metres of a watercourse, measures from the edge of a watercourse, but excluding where such expansion will occur behind the development setback line. Reason: Existing infrastructure at the Heuningkranz farmhouse will be expanded by more than 50 m² within the watercourse on the Farm Heuningkranz 364.
-------------------------------	----	--

The necessary application forms were submitted to DENC in June 2013 and have been accepted by the department(ref: **NC/BA/32/ZFM/TSA/POS4/2013 (NCP/EIA/0000246/2013)**). A basic impact assessment process is required in support of the application for authorisation.

National Water Act

The disturbance of any watercourse requires authorisation under Section 21 of the National Water Act (No. 36 of 1998). An application has been made to the Department of Water Affairs for the General Authorisation (GA) of activities that will occur in the flood line.

This application will be supported by the required application forms and compilation of technical reports and supporting documentation.

South African Heritage Resources Act

The site identified for the development of the core shed has been identified as being of heritage importance as it contains widely-dispersed domestic “midden” (historical dump site) material which is over 60 years in age. Application will be made to the South African Heritage Resources Agency for that a Phase 2 Heritage Assessment be undertaken and a sample of the collection be made. Should SAHRA not allow the development of the shed at the site, the core shed will be moved to allow for the preservation of the site.

PROJECT LOCATION

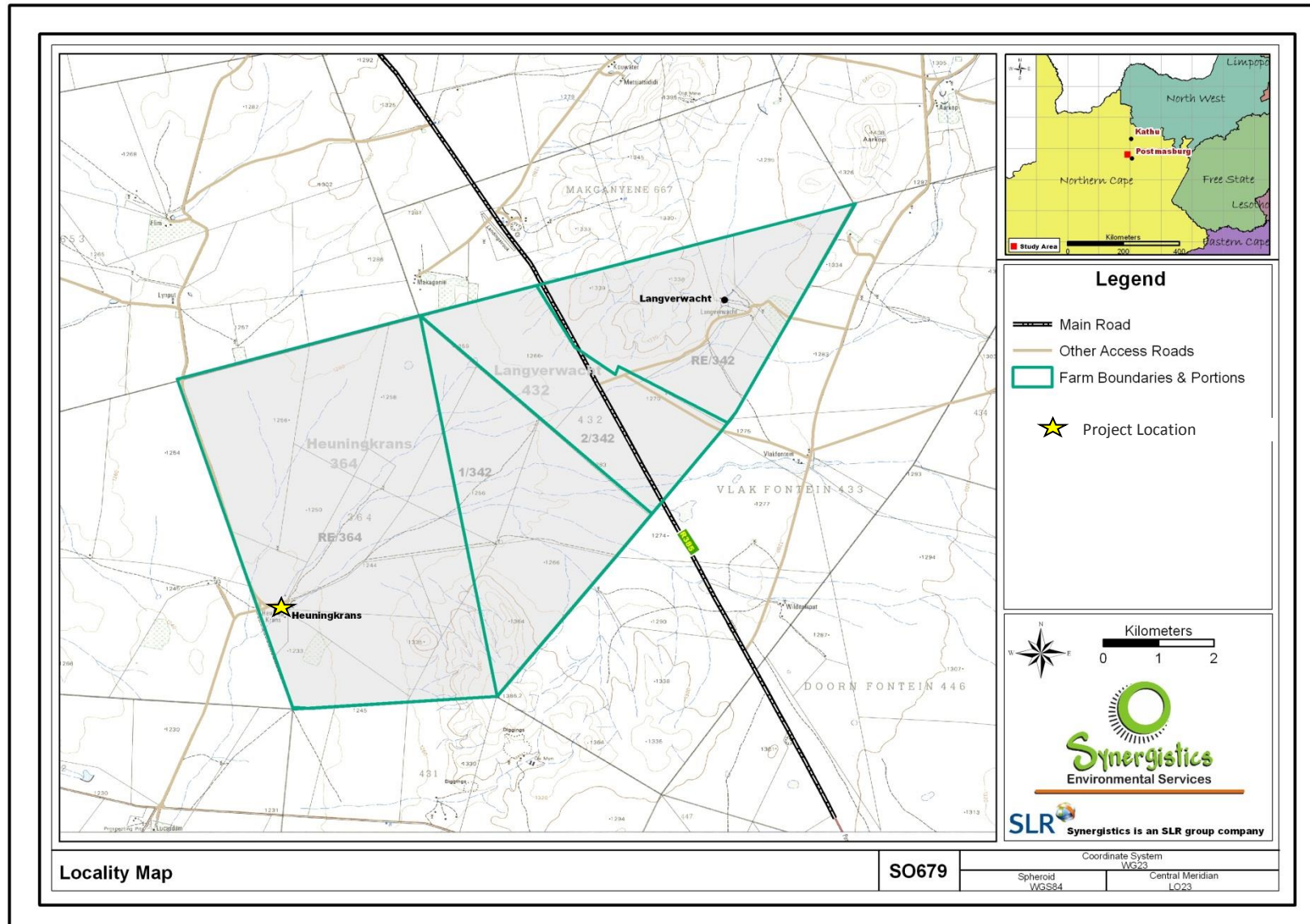


Figure 1: Location of the Heuningkrans 364 and Langverwacht 342 Farms located approximately 24 km north-west of Postmasburg.

PROJECT LOCATION

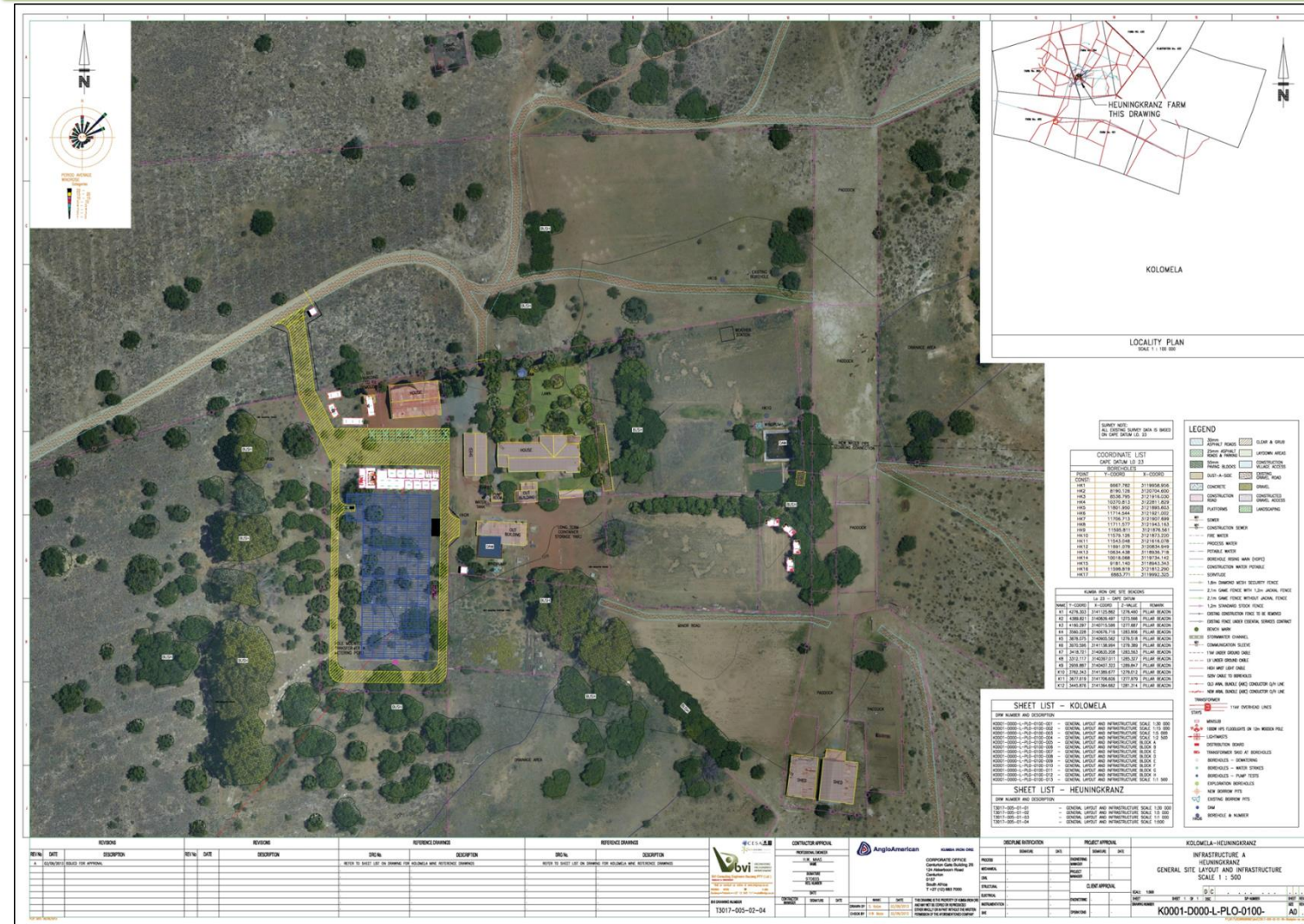


Figure 2: Layout of the Core Shed and Road on Heuningkranz Farm 364

ENVIRONMENTAL AUTHORISATION

Basic Assessment

A basic impact assessment process is a confined environmental analysis of proposed activities, but on a smaller scale, and with less significant and easily manageable environmental impacts. Although a Basic Assessment Report (BAR) comprises less detail than a thorough EIA, it still requires: a complete public participation process; the consideration of potential impacts due to the proposed activity; the assessment of possible mitigation measures; and an assessment to whether any significant issues should be investigated further.

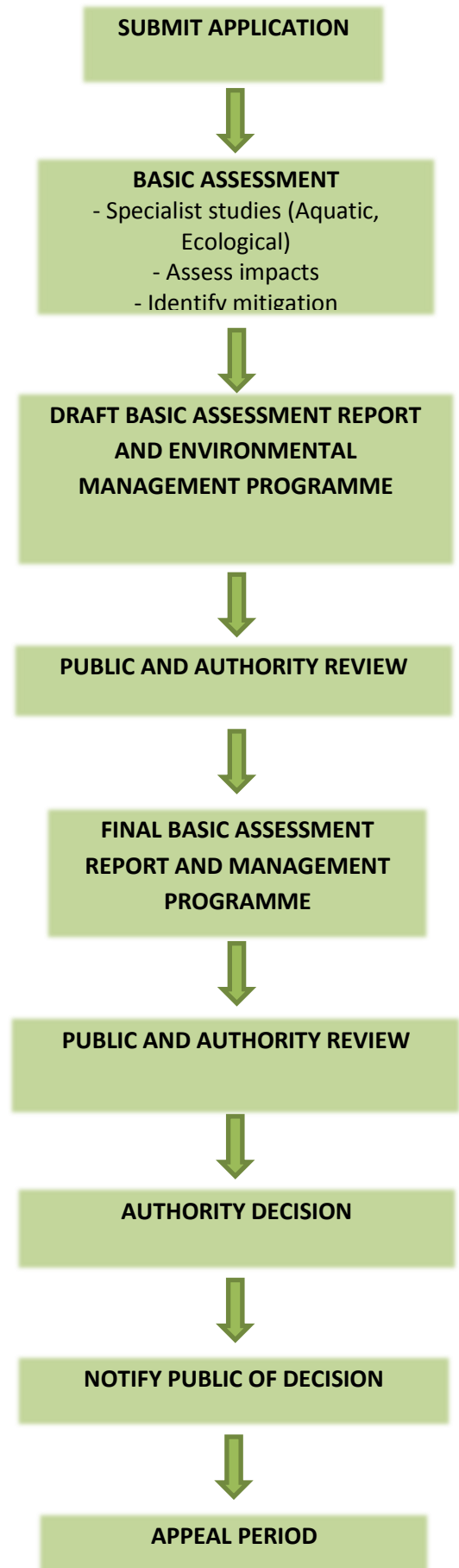
Specialists are involved to provide expert opinion on the likely impacts and often use environment computer modelling to assist with their studies. For the purposes of this assessment, specialist studies will be undertaken to assist in predicting the impacts where required.

The findings of the impact assessment and the proposed measures identified to mitigate such impacts will be documented in a BAR. The draft report and final report will be made available for public comment.

Environmental Management Programme (EMPr)

An activity and project specific EMPr will be developed for each BA process aimed at addressing impacts identified and reducing risks to acceptable levels.

BASIC ASSESSMENT PROCESS



PUBLIC INPUT SHEET FOR PROPOSED CONSTRUCTION OF A CORE SHED, ROAD AND ASSOCIATED INFRASTRUCTURE ON THE FARM HEUNINGKRAANZ 364, NORTHERN CAPE.

Name:	
Address:	
Telephone/cell phone:	
Fax:	
E-mail:	
Date:	
Signature:	

If you know of others who should be informed of the project, please provide us with their contact details:

Name:	
Address:	
Telephone/cell phone:	
Fax:	
E-mail:	

ISSUES, CONCERNS AND QUESTIONS

(use additional pages if required)

Please complete and return to Synergistics Environmental Services (as below) before 29 January 2014.

RETURN COMPLETED SHEET TO:

Henk Botha

PROPOSED CONSTRUCTION OF A CORE SHED, ROAD AND ASSOCIATED INFRASTRUCTURE ON THE FARM HEUNINGKRAANZ 364, NORTHERN CAPE.

Synergistics Environmental Services

Tel: 011 326 4158

Fax: 011 326 4118

E-mail: hbotha@slrconsulting.com

Post: PO Box 68821, Bryanston, 2021, South Africa



