

GENERAL NOTES

1. All work must be done in accordance with the building plan approval conditions.
2. All electrical work must be done in accordance with the electrical code of practice.
3. No alterations may be made to the existing structure without the approval of the Council.
4. All work must be done in accordance with the relevant building regulations and other relevant legislation.
5. All work must be done in accordance with the relevant building regulations and other relevant legislation.
6. A list of the electrical installations to be provided.

NOTES IN RESPECT TO THE SANS 10400 REQUIREMENTS OF THE ABOVE APPLICABLE TO THIS DEVELOPMENT:

SANS 10400 PART A: GENERAL

- All plans to comply with SANS 10400 Part A.
- All work to be done in accordance with SANS 10400 Part A.
- The type and brand of materials to be used in accordance with Annex A of SANS 10400.
- All work to be done in accordance with SANS 10400 Part A.

SANS 10400 PART B: STRUCTURE

- All work to be done in accordance with SANS 10400 Part B.
- The type and brand of materials to be used in accordance with Annex A of SANS 10400.
- All work to be done in accordance with SANS 10400 Part B.

SANS 10400 PART C: SERVICES

- All work to be done in accordance with SANS 10400 Part C.
- The type and brand of materials to be used in accordance with Annex A of SANS 10400.
- All work to be done in accordance with SANS 10400 Part C.

SANS 10400 PART D: SAFETY

- All work to be done in accordance with SANS 10400 Part D.
- The type and brand of materials to be used in accordance with Annex A of SANS 10400.
- All work to be done in accordance with SANS 10400 Part D.

SANS 10400 PART E: ENVIRONMENTAL

- All work to be done in accordance with SANS 10400 Part E.
- The type and brand of materials to be used in accordance with Annex A of SANS 10400.
- All work to be done in accordance with SANS 10400 Part E.

SANS 10400 PART F: ELECTRICAL

- All work to be done in accordance with SANS 10400 Part F.
- The type and brand of materials to be used in accordance with Annex A of SANS 10400.
- All work to be done in accordance with SANS 10400 Part F.

SANS 10400 PART G: PLUMBING

- All work to be done in accordance with SANS 10400 Part G.
- The type and brand of materials to be used in accordance with Annex A of SANS 10400.
- All work to be done in accordance with SANS 10400 Part G.

SANS 10400 PART H: MECHANICAL

- All work to be done in accordance with SANS 10400 Part H.
- The type and brand of materials to be used in accordance with Annex A of SANS 10400.
- All work to be done in accordance with SANS 10400 Part H.

SANS 10400 PART I: FIRE

- All work to be done in accordance with SANS 10400 Part I.
- The type and brand of materials to be used in accordance with Annex A of SANS 10400.
- All work to be done in accordance with SANS 10400 Part I.

SANS 10400 PART J: ACCESSIBILITY

- All work to be done in accordance with SANS 10400 Part J.
- The type and brand of materials to be used in accordance with Annex A of SANS 10400.
- All work to be done in accordance with SANS 10400 Part J.

SANS 10400 PART K: ENERGY EFFICIENCY

- All work to be done in accordance with SANS 10400 Part K.
- The type and brand of materials to be used in accordance with Annex A of SANS 10400.
- All work to be done in accordance with SANS 10400 Part K.

SANS 10400 PART L: SECURITY

- All work to be done in accordance with SANS 10400 Part L.
- The type and brand of materials to be used in accordance with Annex A of SANS 10400.
- All work to be done in accordance with SANS 10400 Part L.

SANS 10400 PART M: SOUND

- All work to be done in accordance with SANS 10400 Part M.
- The type and brand of materials to be used in accordance with Annex A of SANS 10400.
- All work to be done in accordance with SANS 10400 Part M.

SANS 10400 PART N: VIBRATION

- All work to be done in accordance with SANS 10400 Part N.
- The type and brand of materials to be used in accordance with Annex A of SANS 10400.
- All work to be done in accordance with SANS 10400 Part N.

SANS 10400 PART O: OTHER

- All work to be done in accordance with SANS 10400 Part O.
- The type and brand of materials to be used in accordance with Annex A of SANS 10400.
- All work to be done in accordance with SANS 10400 Part O.

SANS 10400 PART P: GENERAL

- All work to be done in accordance with SANS 10400 Part P.
- The type and brand of materials to be used in accordance with Annex A of SANS 10400.
- All work to be done in accordance with SANS 10400 Part P.

SANS 10400 PART Q: OTHER

- All work to be done in accordance with SANS 10400 Part Q.
- The type and brand of materials to be used in accordance with Annex A of SANS 10400.
- All work to be done in accordance with SANS 10400 Part Q.

SANS 10400 PART R: OTHER

- All work to be done in accordance with SANS 10400 Part R.
- The type and brand of materials to be used in accordance with Annex A of SANS 10400.
- All work to be done in accordance with SANS 10400 Part R.

SANS 10400 PART S: OTHER

- All work to be done in accordance with SANS 10400 Part S.
- The type and brand of materials to be used in accordance with Annex A of SANS 10400.
- All work to be done in accordance with SANS 10400 Part S.

SANS 10400 PART T: OTHER

- All work to be done in accordance with SANS 10400 Part T.
- The type and brand of materials to be used in accordance with Annex A of SANS 10400.
- All work to be done in accordance with SANS 10400 Part T.

SANS 10400 PART U: OTHER

- All work to be done in accordance with SANS 10400 Part U.
- The type and brand of materials to be used in accordance with Annex A of SANS 10400.
- All work to be done in accordance with SANS 10400 Part U.

SANS 10400 PART V: OTHER

- All work to be done in accordance with SANS 10400 Part V.
- The type and brand of materials to be used in accordance with Annex A of SANS 10400.
- All work to be done in accordance with SANS 10400 Part V.

SANS 10400 PART W: OTHER

- All work to be done in accordance with SANS 10400 Part W.
- The type and brand of materials to be used in accordance with Annex A of SANS 10400.
- All work to be done in accordance with SANS 10400 Part W.

SANS 10400 PART X: OTHER

- All work to be done in accordance with SANS 10400 Part X.
- The type and brand of materials to be used in accordance with Annex A of SANS 10400.
- All work to be done in accordance with SANS 10400 Part X.

SANS 10400 PART Y: OTHER

- All work to be done in accordance with SANS 10400 Part Y.
- The type and brand of materials to be used in accordance with Annex A of SANS 10400.
- All work to be done in accordance with SANS 10400 Part Y.

SANS 10400 PART Z: OTHER

- All work to be done in accordance with SANS 10400 Part Z.
- The type and brand of materials to be used in accordance with Annex A of SANS 10400.
- All work to be done in accordance with SANS 10400 Part Z.

SANS 10400 PART AA: OTHER

- All work to be done in accordance with SANS 10400 Part AA.
- The type and brand of materials to be used in accordance with Annex A of SANS 10400.
- All work to be done in accordance with SANS 10400 Part AA.

SANS 10400 PART AB: OTHER

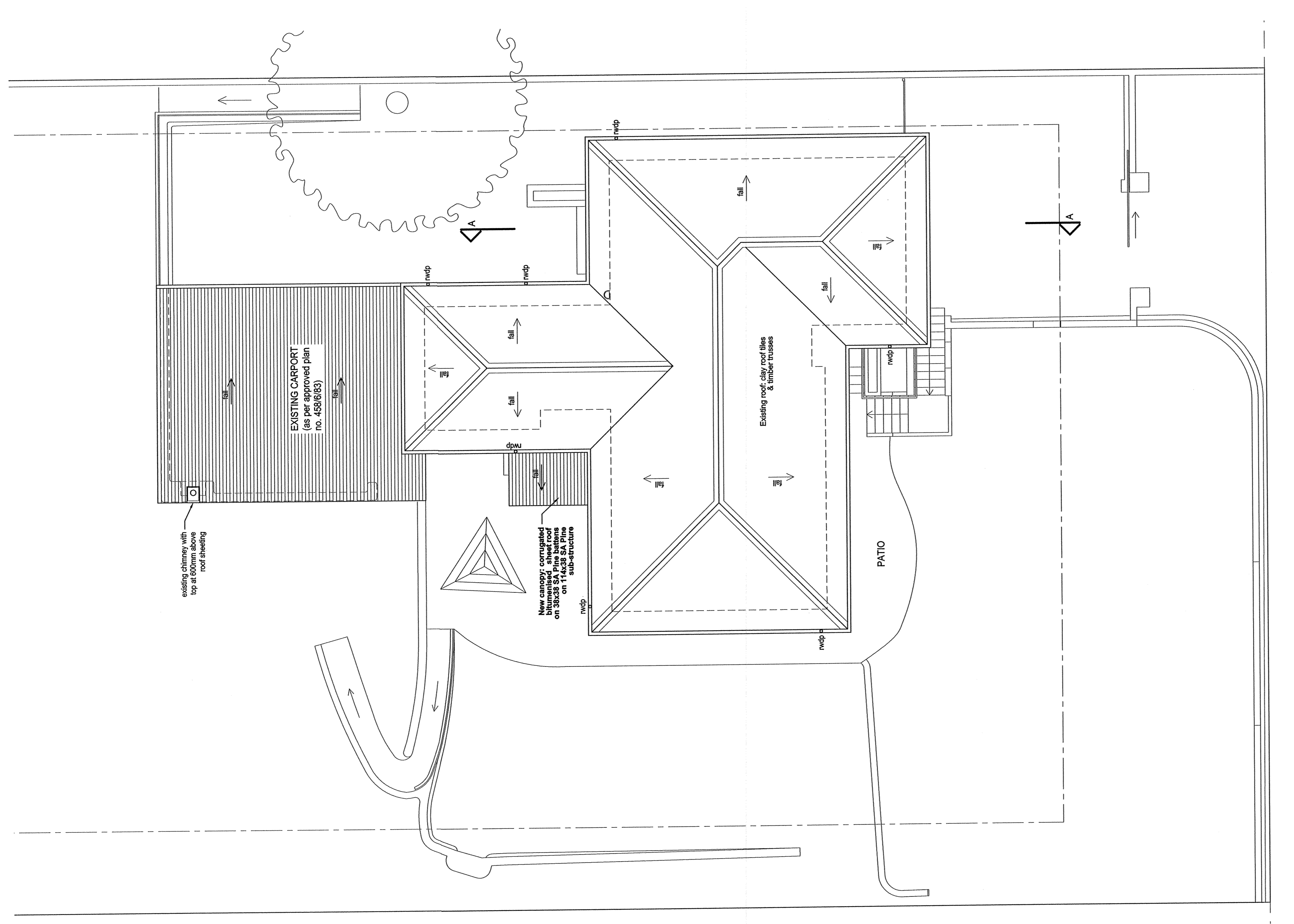
- All work to be done in accordance with SANS 10400 Part AB.
- The type and brand of materials to be used in accordance with Annex A of SANS 10400.
- All work to be done in accordance with SANS 10400 Part AB.

SANS 10400 PART AC: OTHER

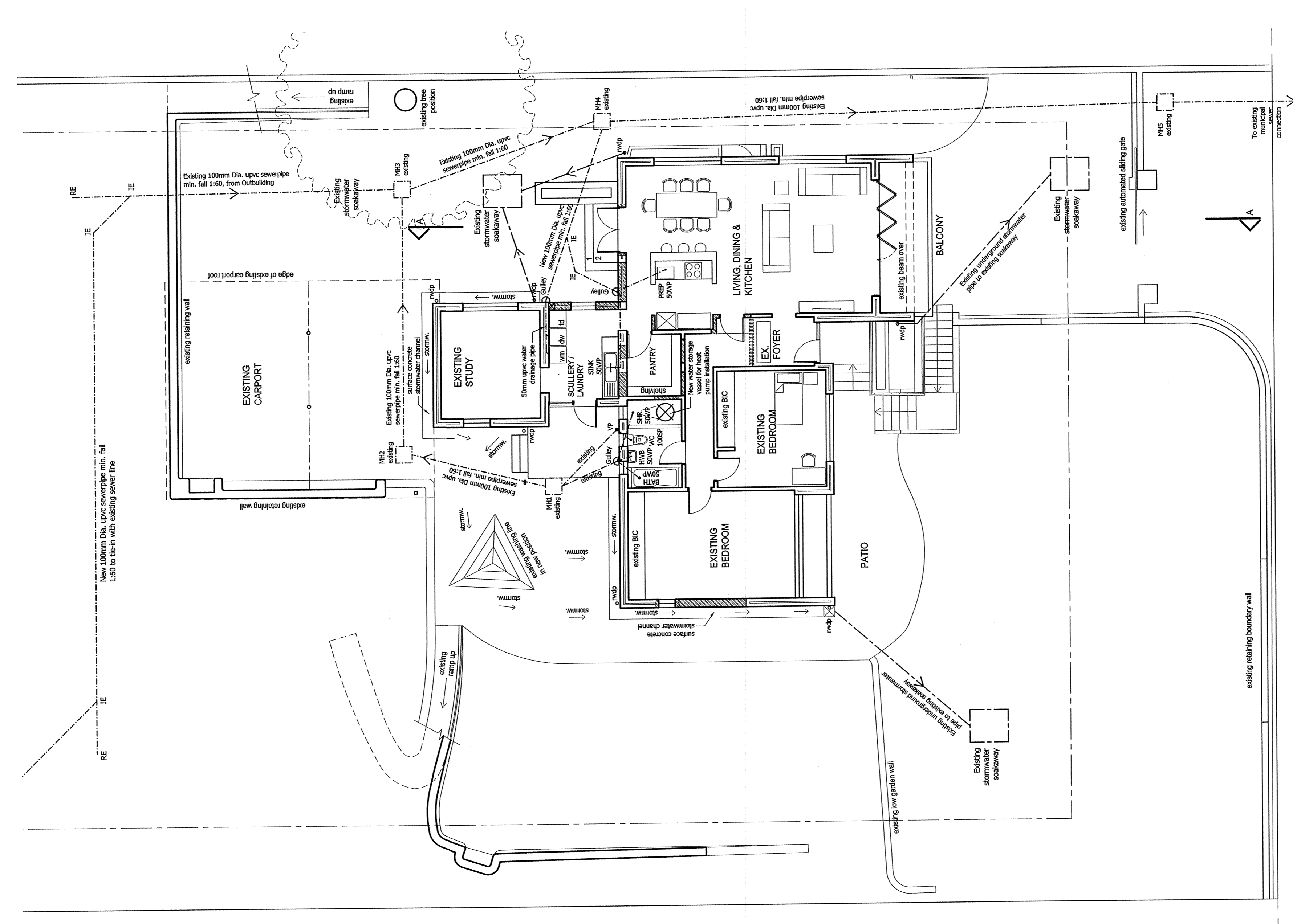
- All work to be done in accordance with SANS 10400 Part AC.
- The type and brand of materials to be used in accordance with Annex A of SANS 10400.
- All work to be done in accordance with SANS 10400 Part AC.

SANS 10400 PART AD: OTHER

- All work to be done in accordance with SANS 10400 Part AD.
- The type and brand of materials to be used in accordance with Annex A of SANS 10400.
- All work to be done in accordance with SANS 10400 Part AD.



ROOF PLAN (EXISTING)
1:100



STORMWATER & DRAINAGE PLAN:
GROUND STOREY
1:100

NOTE:
New hotpump installation to provide 50% of annual hot water heating requirement = 230V per day (ES&L per year)

PLUMBING & DRAINAGE LEGEND	
	Sewer / drainage pipe
	100mm PVC domestic pipe
	New water storage vessel for hot pump installation

MARGARET MAYTOM AVENUE

MARGARET MAYTOM AVENUE

OWNERS: Enxvut and Nockwe van der Linde
Telephone: 082-444-3376
DATE: 17 April 2013

ARCHITECT: J.H. Marais
SANS 10400 registration number: 7188
DATE: 17 April 2013

ENGINEER: M.E. van der Linde
DATE: 17 April 2013

STATUTORY SUBMISSION

PROPOSED ADDITIONS & ALTERATIONS TO EXISTING RESIDENCE
SUBJECT OF LOT 3194 BROADWAY
15 MARGARET MAYTOM AVENUE,
MAYTOM, WEST JOHANNESBURG
DATE: 16/05/2013

Drawings:
- GROUND STOREY: DRAINAGE PLAN
- ROOF PLAN
- STAFF ACCOMMODATION

Scale: 1:100
Date: April 2013
Drawn by: JHM
Project No.: 008
Drawing No.: S001
Revision: A

HMA
J.H. MARAIS (S. ARCH)
REGISTERED ARCHITECT
5737/2013/10400/14111/13