

APPENDIX H1 : APPLICATION LETTER



Jeffrey Nell
Property Development Manager
Door of Hope Children's Mission
Aloe Ridge Drive
De Deur
Gauteng
072 604 0744
jeff@doorofhope.co.za

Gauteng Department: Agriculture and Rural Development
56 Eloff Street, Cnr Main Street
Umknoto House
Johannesburg

9 January 2020

Application for Environmental Authorisation: The proposed development of a village estate for abandoned and orphaned children, on Rem of Portion 19 of the Farm Hartsenberfontein 332IQ, De Deur, Gauteng

Reference Number: 002/19-20/E0045

To Whom It May Concern,

It has been brought to our attention by our environmental consultants, CES - Environmental and social advisory services, that we may have contravened certain regulations in the clearing of vegetation, building of three houses and the installation of a sewage package plant.

CES have advised us that GDARD may deem that we have commenced with construction without the relevant environmental authorisation. The fact that we had local planning approval from the Midvaal Local Municipality does not negate the need for approval as per the National Environmental Management Act (NEMA). They advised that the Land Use Planning Ordinance (LUPO) is a provincial piece of legislation that is subservient to NEMA. It is their understanding that under NEMA the clearing of vegetation and the construction of the houses, roads and 10kl sewerage package plant are illegal activities and furthermore that some of these activities have occurred on a class 3 ridge. CES have advised that they will disclose the construction activity that has occurred on site in the BAR.

Door of Hope takes full responsibility for the construction that has taken place as per the above and confirm that CES had no previous knowledge of the said construction. The approval from Midvaal was received before the environmental process kicked off. We at Door of Hope had no knowledge of what the Environmental process entailed and we were



Faith

Tel: +27 (0)11 432 2797
info@doorofhope.co.za

www.doorofhope.co.za



Hope

8 Copelia Avenue, Glenvista
South Africa, 2091



Love

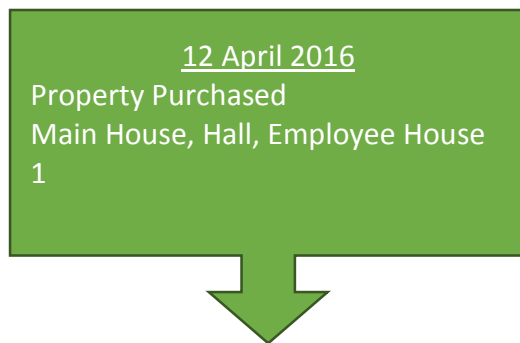
NPO Number: 009-149
PBO (Tax Exemption): 9208/629/15/5

All donations are tax deductible. Section 18A certificates issued on request.

therefore unaware that we were in contravention of any laws. It was not our intention to break any laws as we are an organisation in the public eye and continually deal with various government departments. We assumed that the approval received from Midvaal, who were aware of the scope of our development was sufficient as we have been in discussions with senior leadership from Midvaal even before we bought the property. The house plans and site plan was approved on the basis that staff would be occupying the houses. We were not aware of the laws with regard to ridges and built the houses close to the original house on land that already appeared to be transformed. The approved plans are available for you to view and we can provide further detailed information for the project as needed.

CES advised us to stop all construction on site till further notice which we complied with at immediate effect.

Included below is a timeline of how the events occurred:



Faith

Tel: +27 (0)11 432 2797
info@doorofhope.co.za

www.doorofhope.co.za



Hope

8 Copelia Avenue, Glenvista
South Africa, 2091



Love

NPO Number: 009-149
PBO (Tax Exemption): 9208/629/15/5

All donations are tax deductible. Section 18A certificates issued on request.

29 August 2017
Application to Midvaal to build 3 additional homes




23 January 2018
EIA kick off meeting and site visit with Environmental Practitioners



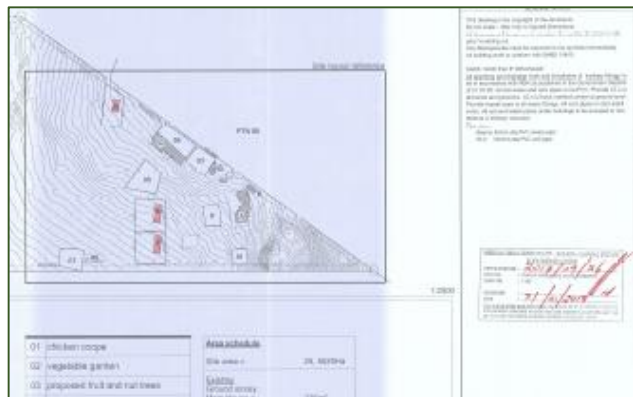
From: Hazel Makhura [<mailto:Hazel.Makhura@eoh.com>]
Sent: 18 January 2018 09:23 AM
To: Jeff Nell <jeff@doorofhope.co.za>
Cc: Gideon Raath <Gideon.Raath@eoh.com>
Subject: RE: P40700261 | Hope Village RFI & site visit

Good morning,
A friendly reminder that on the 23rd of January at 10 am, Gideon will farm Hartsenberfontein 332, De Deur. Please ensure that two copies of them on the 23rd Jan.

Do you have any information from the engineers regarding waste/ please provide a copy of the plans to Gideon on the 23rd and document construction and operation phase.

Please see page 14 on boreholes on the attached Water services by

31 January 2018
Signed approval to build received from Midvaal
Construction commenced shortly after approval in February 2018

Faith

Tel: +27 (0)11 432 2797
info@doorofhope.co.za

www.doorofhope.co.za



Hope

8 Copelia Avenue, Glenvista
South Africa, 2091



Love

NPO Number: 009-149
PBO (Tax Exemption): 9208/629/15/5

All donations are tax deductible. Section 18A certificates issued on request.

In progress 2018
Homes completed and sewage system installed as per site plan approved by Midvaal



6 September 2018
Approached Midvaal for approval of 2 new dwellings (I & J) to the north of E & F



Faith

Tel: +27 (0)11 432 2797
info@doorofhope.co.za

www.doorofhope.co.za



Hope

8 Copelia Avenue, Glenvista
South Africa, 2091

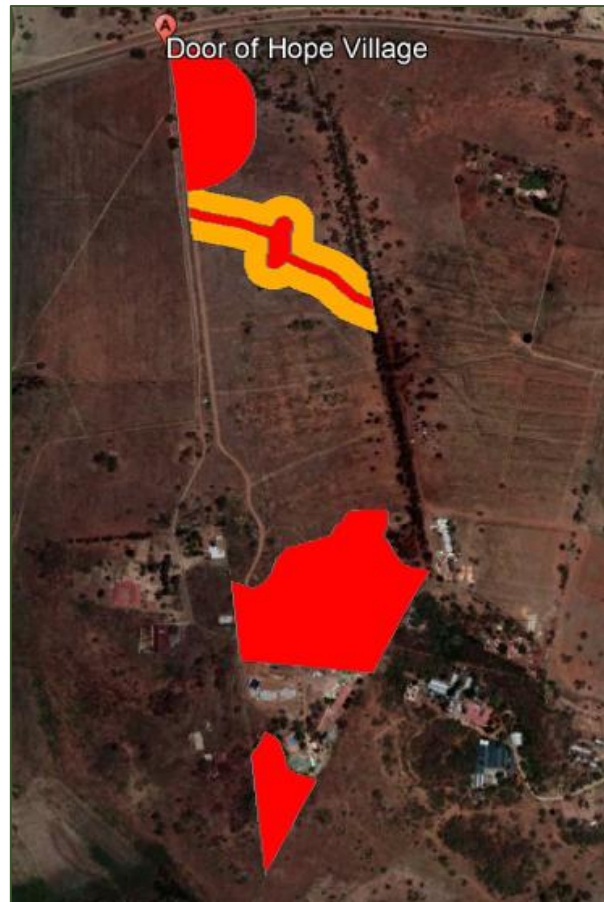


Love

NPO Number: 009-149
PBO (Tax Exemption): 9208/629/15/5

All donations are tax deductible. Section 18A certificates issued on request.

November to December 2018
Heritage, Wetland and Ecological
Reports received showing
restrictions



We hope that this issue can be resolved without disruption to the environmental process. It is our desire to build the children's village for the abandoned and orphaned children in our care as soon as possible.

Your faithfully,

Jeffrey Nell

PROPERTY DEVELOPMENT MANAGER



m: +27(0)72 604 0744 | www.doorofhope.co.za



Faith

Tel: +27 (0)11 432 2797
info@doorofhope.co.za

www.doorofhope.co.za



Hope

8 Copelia Avenue, Glenvista
South Africa, 2091



Love

NPO Number: 009-149
PBO (Tax Exemption): 9208/629/15/5

All donations are tax deductible. Section 18A certificates issued on request.