

APPENDIX H2 : DEA SCREENER REPORT

**SCREENING REPORT FOR AN ENVIRONMENTAL AUTHORIZATION OR
FOR A PART TWO AMENDMENT OF AN ENVIRONMENTAL AUTHORISATION
AS REQUIRED BY THE 2014 EIA REGULATIONS – PROPOSED DEVELOPMENT
FOOTPRINT ENVIRONMENTAL SENSITIVITY**

EIA Reference number: Pending

Project name: Hope Village Children's Mission BAR

Project title: Hope Village Children's Mission BAR

Date screening report generated: 15/10/2019 16:34:58

Applicant: Door of Hope Children's Mission

Compiler: CES: Environmental and Social Advisory services

Compiler signature:

.....

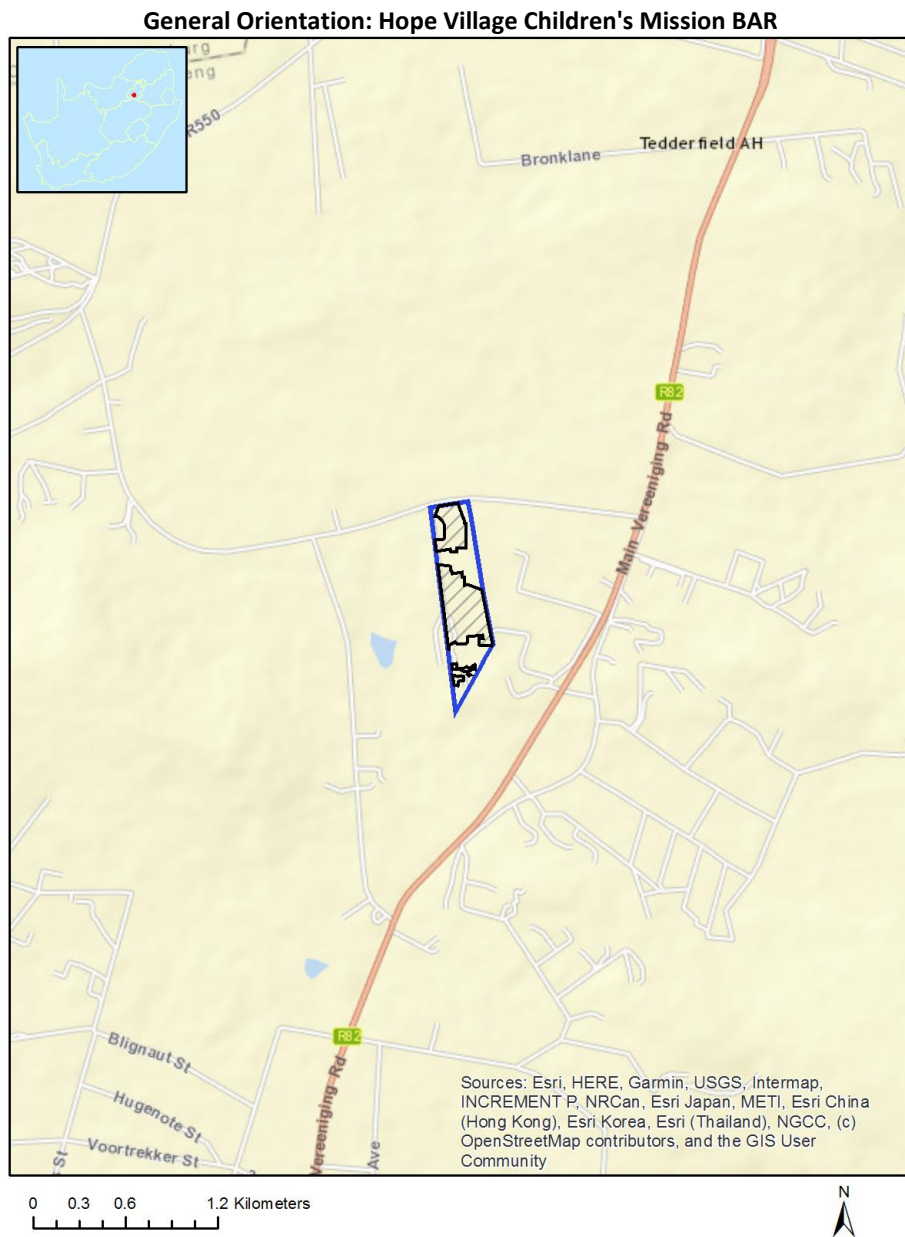


Table of Contents

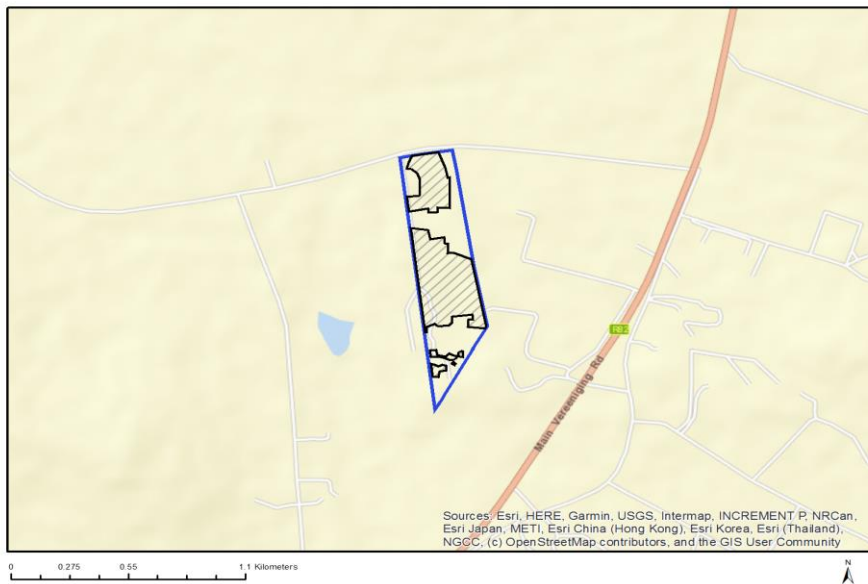
Proposed Project Location	3
Orientation map 1: General location	3
Map of proposed site and relevant area(s)	4
Cadastral details of the proposed site	4
Wind and Solar developments with an approved Environmental Authorisation or applications under consideration within 30 km of the proposed area	7
Environmental Management Frameworks relevant to the application	7
Environmental screening results and assessment outcomes	7
Relevant development incentives, restrictions, exclusions or prohibitions	8
Map indicating proposed development footprint within applicable development incentive, restriction, exclusion or prohibition zones.....	9
Proposed Development Area Environmental Sensitivity.....	9
Specialist assessments identified.....	10
Results of the environmental sensitivity of the proposed area	12
MAP OF RELATIVE AGRICULTURE THEME SENSITIVITY	12
MAP OF RELATIVE AQUATIC BIODIVERSITY THEME SENSITIVITY	13
MAP OF RELATIVE CIVIL AVIATION THEME SENSITIVITY	14
MAP OF RELATIVE PLANT SPECIES THEME SENSITIVITY	15
MAP OF RELATIVE DEFENCE THEME SENSITIVITY.....	16
MAP OF RELATIVE TERRESTRIAL BIODIVERSITY THEME SENSITIVITY	17

Proposed Project Location

Orientation map 1: General location



Map of proposed site and relevant area(s)



Cadastral details of the proposed site

Property details:

No	Farm Name	Farm/ Erf No	Portion	Latitude	Longitude	Property Type
1	HARTSENBERGFONTEIN	332	0	26°24'12.15S	27°57'53.25E	Farm
2	HARTSENBERGFONTEIN	332	133	26°22'56.94S	27°57'50.55E	Farm Portion
3	HARTSENBERGFONTEIN	332	76	26°22'59.7S	27°58'7.91E	Farm Portion
4	HARTSENBERGFONTEIN	332	80	26°23'13.21S	27°58'7.72E	Farm Portion
5	HARTSENBERGFONTEIN	332	19	26°22'53.62S	27°57'58.02E	Farm Portion
6	HARTSENBERGFONTEIN	332	125	26°22'34.79S	27°57'40.1E	Farm Portion

Development footprint¹ vertices:

Footprint	Latitude	Longitude
1	26°22'40.41S	27°57'58.94E
1	26°22'45.05S	27°57'58.9E
1	26°22'45.02S	27°57'57.04E
1	26°22'45.68S	27°57'57.04E
1	26°22'45.78S	27°57'55.66E
1	26°22'45.16S	27°57'55.56E
1	26°22'45.58S	27°57'52.69E
1	26°22'43.37S	27°57'52.35E
1	26°22'43.22S	27°57'54.29E
1	26°22'40.75S	27°57'54.33E
1	26°22'39.76S	27°57'53.97E
1	26°22'39.15S	27°57'53.02E

¹ “development footprint”, means the area within the site on which the development will take place and includes all ancillary developments for example roads, power lines, boundary walls, paving etc. which require vegetation clearance or which will be disturbed and for which the application has been submitted.

1	26°22'39.06S	27°57'52.33E
1	26°22'38.2S	27°57'52.65E
1	26°22'37.11S	27°57'53.18E
1	26°22'36.54S	27°57'57.17E
1	26°22'38.97S	27°57'58.19E
1	26°22'40.43S	27°57'58.56E
1	26°22'40.41S	27°57'58.94E
2	26°23'4.11S	27°57'55.13E
2	26°22'48.14S	27°57'52.94E
2	26°22'48.42S	27°57'55.61E
2	26°22'49.82S	27°57'55.94E
2	26°22'49.56S	27°57'58.07E
2	26°22'50.49S	27°57'58.13E
2	26°22'50.54S	27°57'58.61E
2	26°22'51.99S	27°57'58.57E
2	26°22'51.9S	27°57'59.03E
2	26°22'51.92S	27°57'59.65E
2	26°22'52.87S	27°58'2.18E
2	26°23'3.15S	27°58'4.44E
2	26°23'3.45S	27°58'4.27E
2	26°23'3.24S	27°58'1.63E
2	26°23'2.11S	27°58'1.71E
2	26°23'2.18S	27°58'2.43E
2	26°23'1.32S	27°58'2.36E
2	26°23'1.67S	27°57'59.31E
2	26°23'2.62S	27°57'59.28E
2	26°23'3.11S	27°57'58.75E
2	26°23'3.09S	27°57'57.9E
2	26°23'3.17S	27°57'57.65E
2	26°23'3.11S	27°57'56.97E
2	26°23'2.75S	27°57'56.6E
2	26°23'3.22S	27°57'55.43E
2	26°23'4.11S	27°57'55.39E
2	26°23'4.11S	27°57'55.13E
3	26°22'40.41S	27°57'58.94E
3	26°22'45.05S	27°57'58.9E
3	26°22'45.02S	27°57'57.04E
3	26°22'45.68S	27°57'57.04E
3	26°22'45.78S	27°57'55.66E
3	26°22'45.16S	27°57'55.56E
3	26°22'45.58S	27°57'52.69E
3	26°22'43.37S	27°57'52.35E
3	26°22'43.22S	27°57'54.29E
3	26°22'40.75S	27°57'54.33E
3	26°22'39.76S	27°57'53.97E
3	26°22'39.15S	27°57'53.02E
3	26°22'39.06S	27°57'52.33E
3	26°22'38.2S	27°57'52.65E
3	26°22'37.11S	27°57'53.18E
3	26°22'36.54S	27°57'57.17E
3	26°22'38.97S	27°57'58.19E
3	26°22'40.43S	27°57'58.56E
3	26°22'40.41S	27°57'58.94E
4	26°23'4.11S	27°57'55.13E
4	26°22'48.14S	27°57'52.94E
4	26°22'48.42S	27°57'55.61E
4	26°22'49.82S	27°57'55.94E
4	26°22'49.56S	27°57'58.07E
4	26°22'50.49S	27°57'58.13E
4	26°22'50.54S	27°57'58.61E

4	26°22'51.99S	27°57'58.57E
4	26°22'51.9S	27°57'59.03E
4	26°22'51.92S	27°57'59.65E
4	26°22'52.87S	27°58'2.18E
4	26°23'3.15S	27°58'4.44E
4	26°23'3.45S	27°58'4.27E
4	26°23'3.24S	27°58'1.63E
4	26°23'2.11S	27°58'1.71E
4	26°23'2.18S	27°58'2.43E
4	26°23'1.32S	27°58'2.36E
4	26°23'1.67S	27°57'59.31E
4	26°23'2.62S	27°57'59.28E
4	26°23'3.11S	27°57'58.75E
4	26°23'3.09S	27°57'57.9E
4	26°23'3.17S	27°57'57.65E
4	26°23'3.11S	27°57'56.97E
4	26°23'2.75S	27°57'56.6E
4	26°23'3.22S	27°57'55.43E
4	26°23'4.11S	27°57'55.39E
4	26°23'4.11S	27°57'55.13E
5	26°23'6.87S	27°57'55.84E
5	26°23'6.76S	27°57'56.86E
5	26°23'7.57S	27°57'56.96E
5	26°23'7.76S	27°57'58.12E
5	26°23'7.78S	27°57'58.16E
5	26°23'7.69S	27°57'58.38E
5	26°23'7.33S	27°57'58.88E
5	26°23'7.64S	27°57'59.56E
5	26°23'7.67S	27°58'0.17E
5	26°23'7.17S	27°58'0.26E
5	26°23'6.91S	27°58'0.67E
5	26°23'7.04S	27°58'0.91E
5	26°23'7.85S	27°58'0.92E
5	26°23'7.71S	27°57'59.95E
5	26°23'8.01S	27°57'59.89E
5	26°23'8.34S	27°57'59.32E
5	26°23'8.29S	27°57'58.79E
5	26°23'7.99S	27°57'58.2E
5	26°23'7.78S	27°57'57.12E
5	26°23'7.87S	27°57'56.05E
5	26°23'6.87S	27°57'55.84E
6	26°23'10.86S	27°57'56.32E
6	26°23'8.91S	27°57'56.07E
6	26°23'9.24S	27°57'57.21E
6	26°23'9.05S	27°57'57.74E
6	26°23'9.19S	27°57'58.42E
6	26°23'9.94S	27°57'58.42E
6	26°23'10.09S	27°57'57.36E
6	26°23'10.93S	27°57'57.19E
6	26°23'10.86S	27°57'56.32E
7	26°23'9.12S	27°57'59.62E
7	26°23'8.85S	27°57'59.18E
7	26°23'8.57S	27°57'59.43E
7	26°23'8.88S	27°57'59.83E
7	26°23'9.12S	27°57'59.62E

Wind and Solar developments with an approved Environmental Authorisation or applications under consideration within 30 km of the proposed area

No	EIA Reference No	Classification	Status of application	Distance from proposed area (km)
1	12/12/20/2530	Solar PV	Approved	14.4
2	12/12/20/2551	Solar PV	Approved	14.4

Environmental Management Frameworks relevant to the application



Environmental Management Framework	LINK
Gauteng EMF	https://screening.environment.gov.za/ScreeningDownloads/EMF/Zone 1, Zone 2, Zone 3, Zone 4, Zone 5.pdf

Environmental screening results and assessment outcomes

The following sections contain a summary of any development incentives, restrictions, exclusions or prohibitions that apply to the proposed development footprint as well as the most environmental sensitive features on the footprint based on the footprint sensitivity screening results for the application classification that was selected. The application classification selected for this report is:

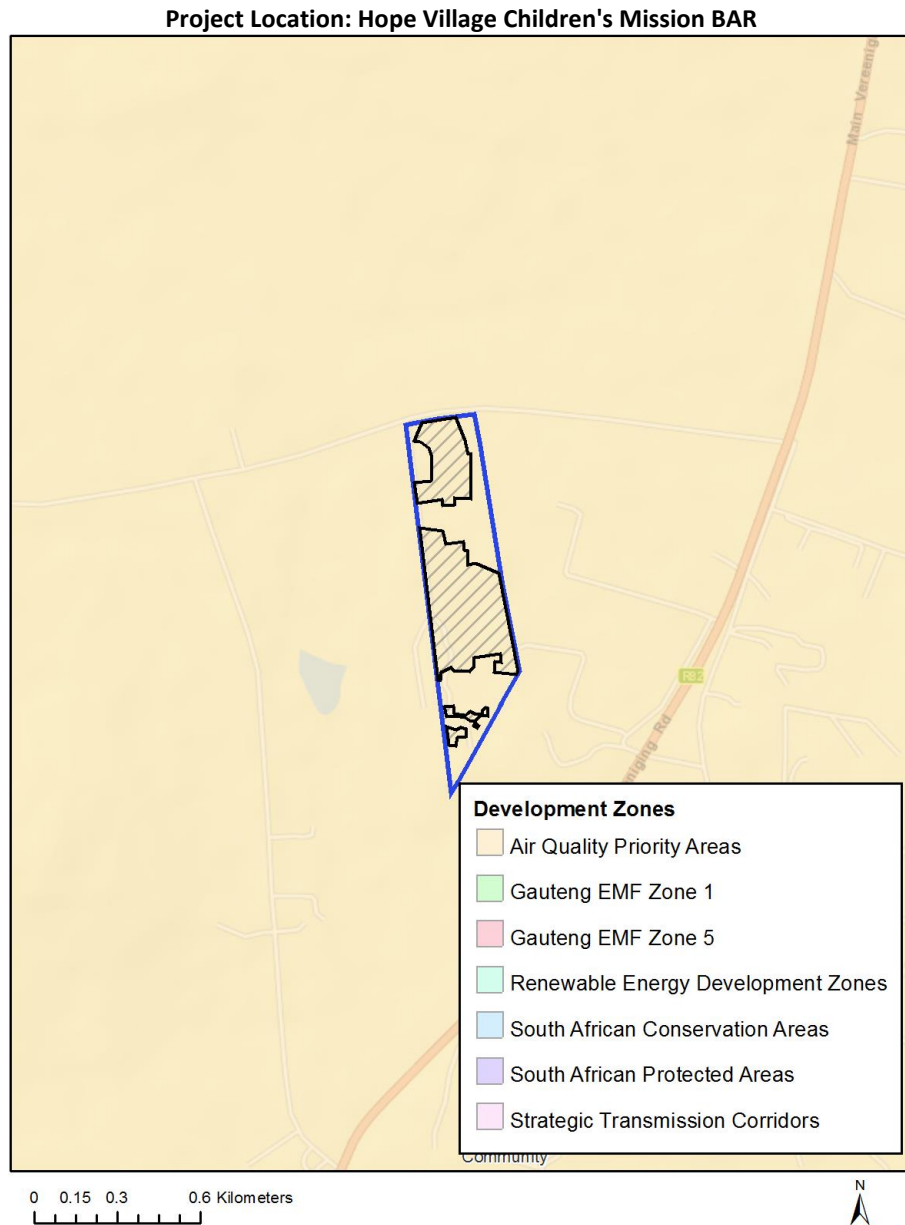
Transformation of land | Indigenous vegetation | Transformation of land - Indigenous vegetation.

Relevant development incentives, restrictions, exclusions or prohibitions

The following development incentives, restrictions, exclusions or prohibitions and their implications that apply to this footprint are indicated below.

Incentive, restriction or prohibition	Implication
Strategic Transmission Corridor-Central corridor	https://screening.environment.gov.za/ScreeningDownloads/DevelopmentZones/GNR_350_of_13_April_2017.pdf
Air Quality-Vaal Triangle Airshed Priority Area	https://screening.environment.gov.za/ScreeningDownloads/DevelopmentZones/Final_VTAPA_AQMP_20090408_-15_April_2009.pdf

Map indicating proposed development footprint within applicable development incentive, restriction, exclusion or prohibition zones



Proposed Development Area Environmental Sensitivity

The following summary of the development footprint environmental sensitivities is identified. Only the highest environmental sensitivity is indicated. The footprint environmental sensitivities for the proposed development footprint as identified, are indicative only and must be verified on site by a suitably qualified person before the specialist assessments identified below can be confirmed.

Theme	Very High sensitivity	High sensitivity	Medium sensitivity	Low sensitivity
Agriculture Theme		X		
Aquatic Biodiversity				X

Theme				
Civil Aviation Theme		X		
Plant Species Theme			X	
Defence Theme				X
Terrestrial Biodiversity Theme	X			

Specialist assessments identified

Based on the selected classification, and the environmental sensitivities of the proposed development footprint, the following list of specialist assessments have been identified for inclusion in the assessment report. It is the responsibility of the EAP to confirm this list and to motivate in the assessment report, the reason for not including any of the identified specialist study including the provision of photographic evidence of the footprint situation.

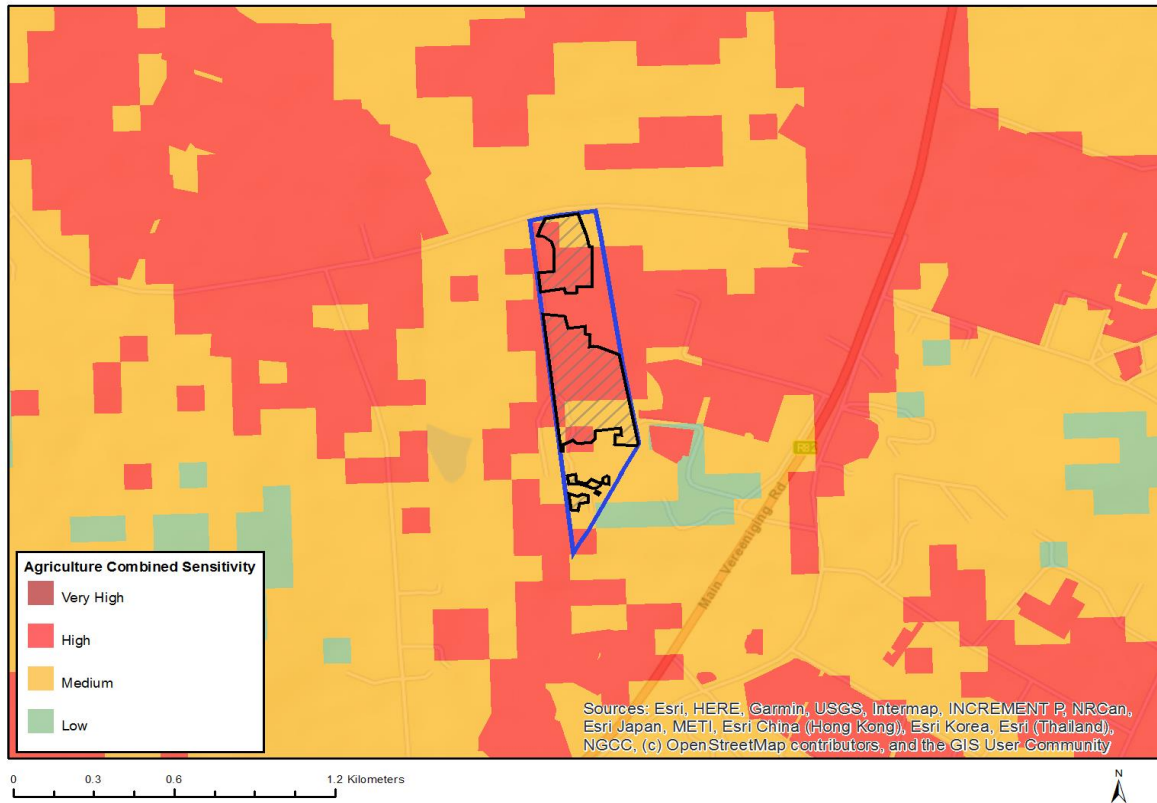
N o	Specialist assessment	Assessment Protocol
1	Landscape/Visual Impact Assessment	https://screening.environment.gov.za/ScreeningDownloads/AssessmentProtocols/DraftGazetted_General_Requirement_Assessment_Protocols.pdf
2	Archaeological and Cultural Heritage Impact Assessment	https://screening.environment.gov.za/ScreeningDownloads/AssessmentProtocols/DraftGazetted_General_Requirement_Assessment_Protocols.pdf
3	Palaeontology Impact Assessment	https://screening.environment.gov.za/ScreeningDownloads/AssessmentProtocols/DraftGazetted_General_Requirement_Assessment_Protocols.pdf
4	Terrestrial Biodiversity Impact Assessment	https://screening.environment.gov.za/ScreeningDownloads/AssessmentProtocols/DraftGazetted_Terrestrial_Biodiversity_Assessment_Protocols.pdf
5	Aquatic Biodiversity Impact Assessment	https://screening.environment.gov.za/ScreeningDownloads/AssessmentProtocols/DraftGazetted_Aquatic_Biodiversity_Assessment.pdf
6	Avian Impact Assessment	https://screening.environment.gov.za/ScreeningDownloads/AssessmentProtocols/DraftGazetted_General_Requirement_Assessment_Protocols.pdf
7	Socio-Economic Assessment	https://screening.environment.gov.za/ScreeningDownloads/AssessmentProtocols/DraftGazetted_General_Requirement_Assessment_Protocols.pdf

	ent	
8	Plant Species Assessm ent	https://screening.environment.gov.za/ScreeningDownloads/AssessmentProtocols/DraftGazetted_General_Requirement_Assessment_Protocols.pdf
9	Animal Species Assessm ent	https://screening.environment.gov.za/ScreeningDownloads/AssessmentProtocols/DraftGazetted_General_Requirement_Assessment_Protocols.pdf

Results of the environmental sensitivity of the proposed area.

The following section represents the results of the screening for environmental sensitivity of the proposed footprint for relevant environmental themes associated with the project classification. It is the duty of the EAP to ensure that the environmental themes provided by the screening tool are comprehensive and complete for the project. Refer to the disclaimer.

MAP OF RELATIVE AGRICULTURE THEME SENSITIVITY



Very High sensitivity	High sensitivity	Medium sensitivity	Low sensitivity
	X		

Sensitivity Features:

Sensitivity	Feature(s)
High	Land capability;09. Moderate-High/10. Moderate-High
Medium	Land capability;06. Low-Moderate/07. Low-Moderate/08. Moderate

MAP OF RELATIVE AQUATIC BIODIVERSITY THEME SENSITIVITY

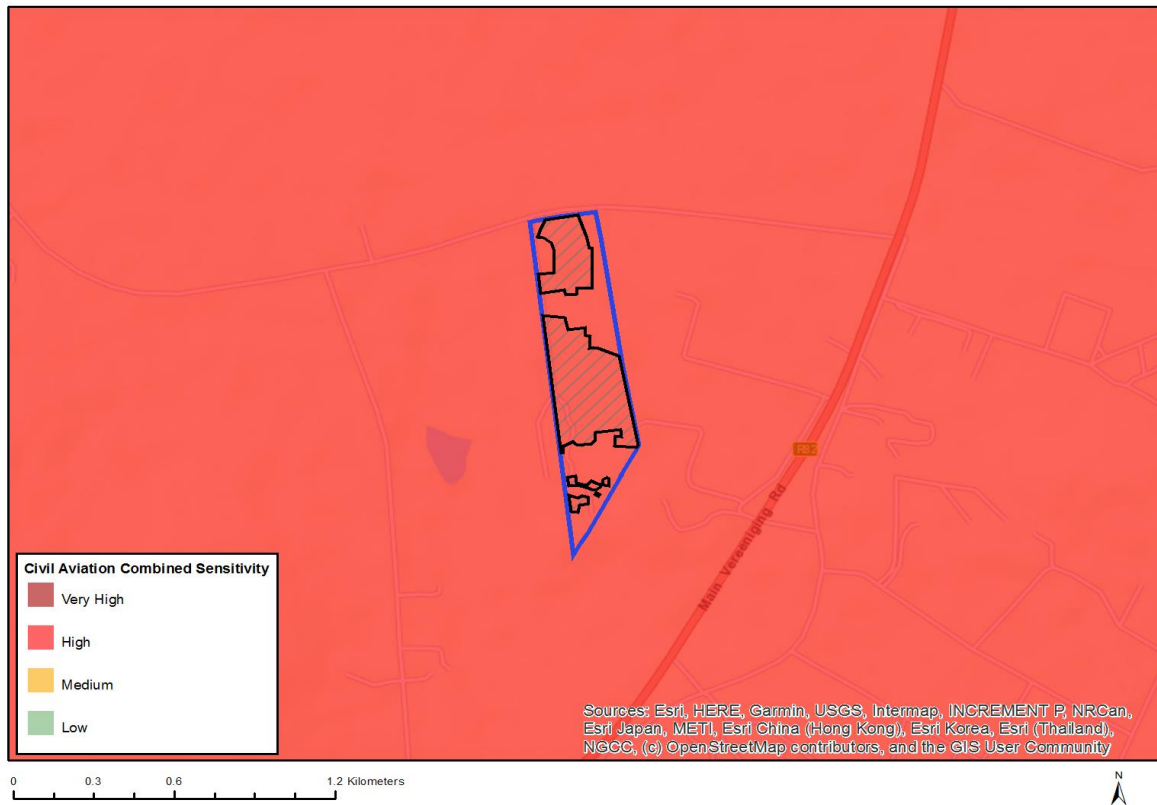


Very High sensitivity	High sensitivity	Medium sensitivity	Low sensitivity
			X

Sensitivity Features:

Sensitivity	Feature(s)
Low	Low Sensitivity Areas

MAP OF RELATIVE CIVIL AVIATION THEME SENSITIVITY

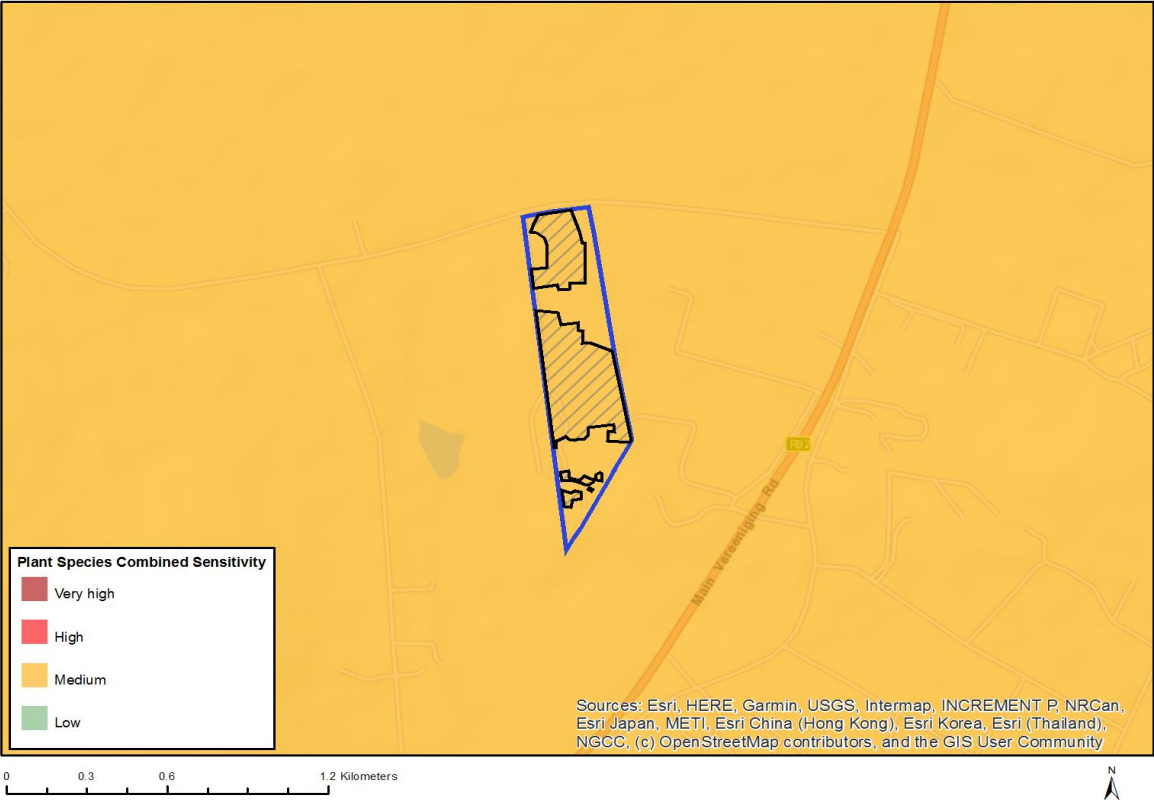


Very High sensitivity	High sensitivity	Medium sensitivity	Low sensitivity
	X		

Sensitivity Features:

Sensitivity	Feature(s)
High	Within 8 km of other civil aviation aerodrome

MAP OF RELATIVE PLANT SPECIES THEME SENSITIVITY



Very High sensitivity	High sensitivity	Medium sensitivity	Low sensitivity
		X	

Sensitivity Features:

Sensitivity	Feature(s)
Medium	Khadia beswickii

MAP OF RELATIVE DEFENCE THEME SENSITIVITY

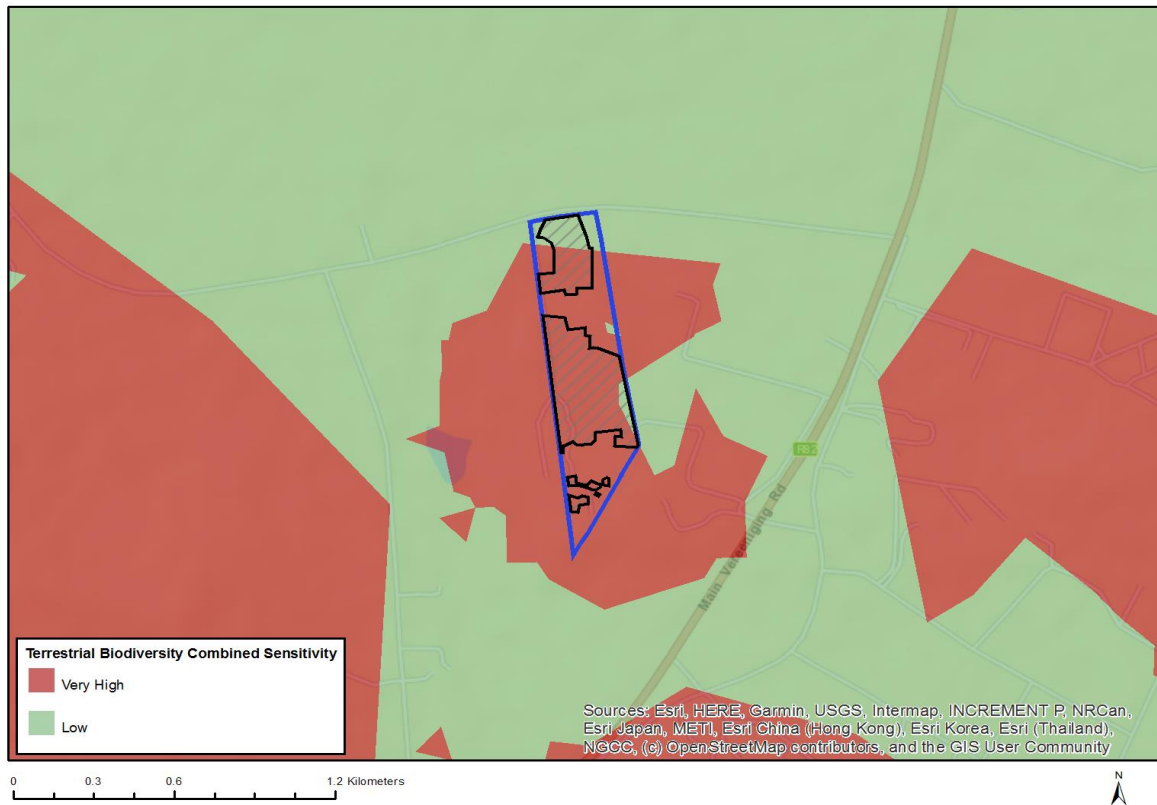


Very High sensitivity	High sensitivity	Medium sensitivity	Low sensitivity
			X

Sensitivity Features:

Sensitivity	Feature(s)
Low	Low sensitivity

MAP OF RELATIVE TERRESTRIAL BIODIVERSITY THEME SENSITIVITY



Very High sensitivity	High sensitivity	Medium sensitivity	Low sensitivity
X			

Sensitivity Features:

Sensitivity	Feature(s)
Low	None
Very High	Ecological Support Area 1
Very High	Critical Biodiversity Area 1
Very High	Focus Areas for land-based protected areas expansion