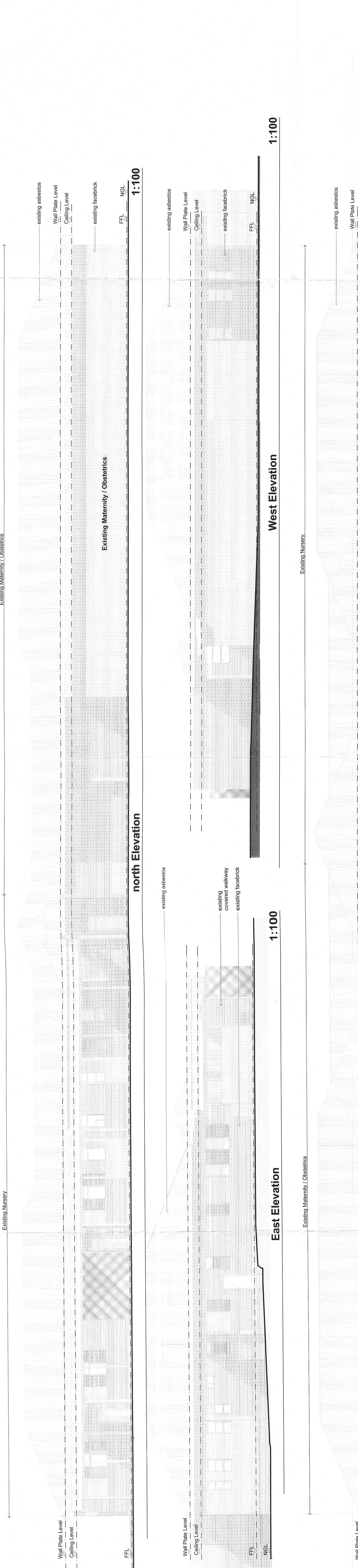


LEGEND	
1. STAFF CHANGE ROOM	
2. STAFF TEA ROOM	
3. NURSERY EQUIPMENT ROOM	
4. DOCTORS' ROOM	
5. MEDICAL STOCK ROOM	
6. MEDICAL STOCK ROOM	
7. SEMINAR ROOM	
8. PREM NURSERY	
9. PREM NURSERY	
10. NURSERY HIGH CARE	
11. BREAST MILK BANK	
12. MULTIPURPOSE OFFICE STOCK ROOM	
13. OLD PREM NURSERY	
14. STAFF TOILET	
15. STAFF TOILET	
16. STAFF ROOM	
17. SLUICE ROOM	
18. NURSERY ICU	
19. DUTY ROOM	
20. OBSERVATION ROOM 1	
21. OBSERVATION ROOM 3	
22. PASSAGE A	
23. PASSAGE B	
24. PASSAGE C	



LEGEND	
1. STAFF CHANGE ROOM	
2. STAFF TEA ROOM	
3. NURSERY EQUIPMENT ROOM	
4. DOCTORS' ROOM	
5. MEDICAL STOCK ROOM	
6. MEDICAL STOCK ROOM	
7. SEMINAR ROOM	
8. PREM NURSERY	
9. PREM NURSERY	
10. NURSERY HIGH CARE	
11. BREAST MILK BANK	
12. MULTIPURPOSE OFFICE STOCK ROOM	
13. OLD PREM NURSERY	
14. STAFF TOILET	
15. STAFF TOILET	
16. STAFF ROOM	
17. SLUICE ROOM	
18. NURSERY ICU	
19. DUTY ROOM	
20. OBSERVATION ROOM 1	
21. OBSERVATION ROOM 3	
22. PASSAGE A	
23. PASSAGE B	
24. PASSAGE C	

client: **ARC H I T E C T S**

41 SWAPO ROAD, BUCKWOLD, DURBAN NORTH
 TEL: 031 253 3432 FAX: 031 253 3418
 www.arcarchitects.co.za

RECEIVED
 2015-07-19
 DEPARTMENT OF PUBLIC WORKS
 MAJOR PROJECTS/REGISTRATION

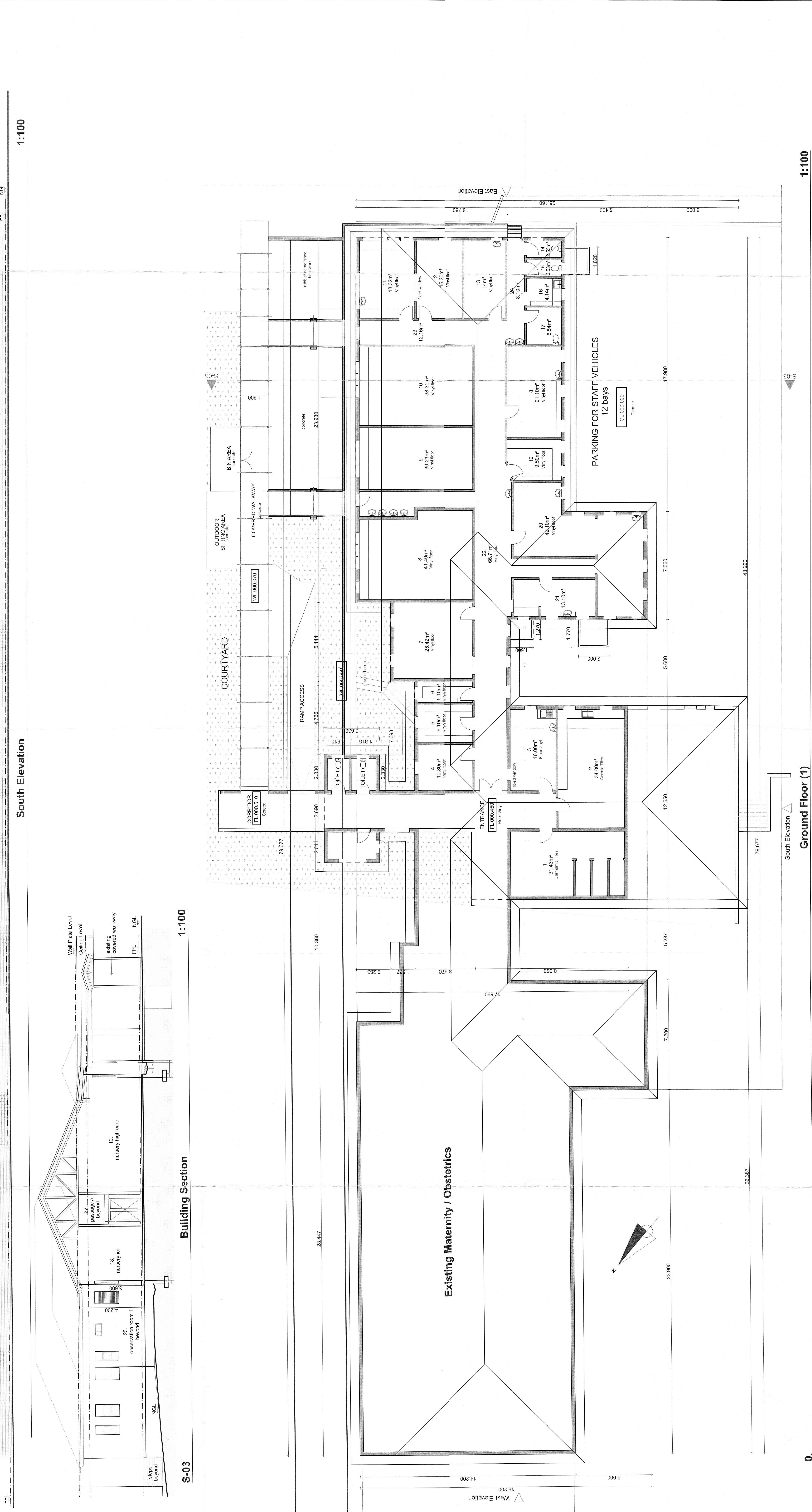
Professional Architects Signature: *[Signature]*
 Mr. P.P. Mawani (P. Arch) License (1992), date (1999)

PROJECT DESCRIPTION:
KING EDWARD VIII HOSPITAL NEONATAL NURSERY UP GRADE

DRAWING TITLE:
AS-BUILT DRAWINGS

DATE: APRIL 2015
 SCALE: 1:100
 DRAWN: MAN
 REVISION:

ISSUED FOR APPROVAL
 ISSUED FOR SUBMISSION
 ISSUED FOR TENDER
 ISSUED FOR CONSTRUCTION



LEGEND	
1. STAFF CHANGE ROOM	
2. STAFF TEA ROOM	
3. NURSERY EQUIPMENT ROOM	
4. DOCTORS' ROOM	
5. MEDICAL STOCK ROOM	
6. MEDICAL STOCK ROOM	
7. SEMINAR ROOM	
8. PREM NURSERY	
9. PREM NURSERY	
10. NURSERY HIGH CARE	
11. BREAST MILK BANK	
12. MULTIPURPOSE OFFICE STOCK ROOM	
13. OLD PREM NURSERY	
14. STAFF TOILET	
15. STAFF TOILET	
16. STAFF ROOM	
17. SLUICE ROOM	
18. NURSERY ICU	
19. DUTY ROOM	
20. OBSERVATION ROOM 1	
21. OBSERVATION ROOM 3	
22. PASSAGE A	
23. PASSAGE B	
24. PASSAGE C	