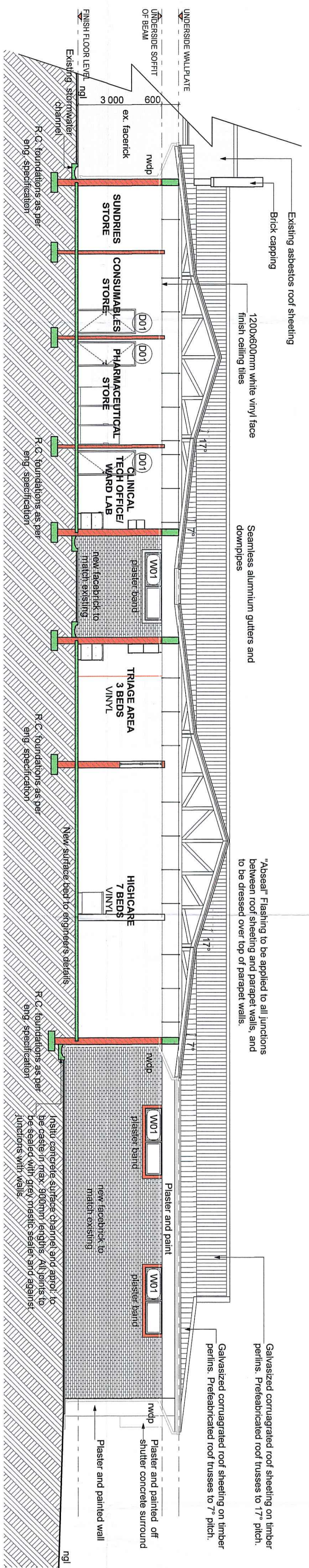
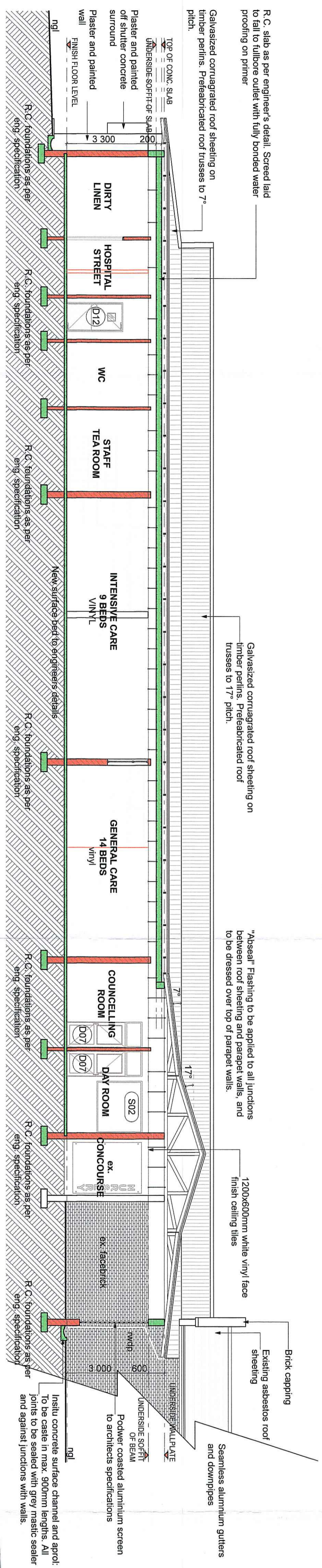


SECTION A - A
Scale 1:100



SECTION B - B
Scale 1:100



SECTION C - C
Scale 1:100

REVISION	DATE	NO	REVISIONS	INT.
2015-12-14	b		Change Dry/ Utility Passage to Clean Utility - Move Dry/ Utility door 500mm away from the main - Move door into the Reception and Waiting Area - Add FT basin in Clean Utility - Add FT basin in Intensive Care - Add FT basin in General Care & - Move position of FT basins in General Care & - Move D11 door an access controlled door	S.Matze
2016-01-13	c			S.Matze

Client

Signature: Date:

SAKHISIZWE ARCHITECTS

HEAD OFFICE
41 SWAPO ROAD, BROOKLYN, DURBAN NORTH
TEL: 031 261 2319
www.sakhisizwe.co.za

BRANCH OFFICE
SUITE 20, HILTON STREET, MTJUNJUN
TEL: 035 753 4590 FAX: 035 753 4592
www.sakhisizwe.co.za

Professional Architects' Signature: *[Signature]*

Professional Architects' Signature: *[Signature]*

M. K. P. Mawesana (P. Arch) Licent (7902), sala (7293)

PROJECT DESCRIPTION:
ADDITIONS AND ALTERATION TO EXISTING KING EDWARD VIII HOSPITAL, NEONATAL NURSERY, PHYSIOTHERAPY & PSYCHOLOGY DEPARTMENT, ON ERF 8487 AND ERF 8489 OF THE FARM DURBAN

DRAWING TITLE	NEONATAL NURSERY SECTIONS
DATE	MARCH 2016
PROJECT NO.	S391
DRAWING NO.	SD - 102
SCALE	AS SHOWN
DRAWN	SM
REVISION	07c
ISSUED FOR APPROVAL	
ISSUED FOR INFORMATION	
ISSUED FOR SUBMISSION	
ISSUED FOR TENDER	
ISSUED FOR CONSTRUCTION	

