

EXISTING CUBICLE WALLS TO BE DEMOLISHED
FLOOR AND WALLS MADE GOOD
ALLOW FOR NEW TILES TO FLOOR AND WALLS
TO MATCH EXISTING

EXISTING URINAL TO BE REMOVED AND PIPES
BLANKED OFF

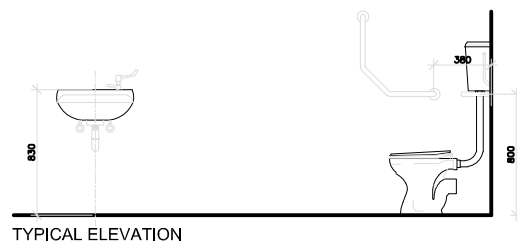
REMOVE EXISTING WC PAN AND CISTERN
INSTALL NEW VAAL SANITARYWARE VITREOUS
CHINA PROTEA PARAPLEGIC LOW LEVEL SUITE
CODE 750246 WITH APPROVED DUTTON PLASTICS
TOILET SEAT

INSTALL NEW FRANKE GRAB RAILS POSITIONED
AS INDICATED
CISTERN BACK RAIL CNTXBR (359910)
PARAPLEGIC CNTXPAR (359885)

REMOVE EXISTING WHB AND INSTALL NEW VAAL
SANITARYWARE DAISY VITREOUS CHINA WALL
MOUNTED BASIN AS INDICATED
COLOUR WHITE (CODE: 7008), SIZE 510 X 400MM
WITH SEMI PUNCHED TAP HOLES, INTEGRATED
OVERFLOW BOLTED TO WALL WITH TWO 10MM
BOLTS (CODE: 8448Z0) AND SEALED WITH
SILICONE SEALANT WHERE BASIN MEETS WALL

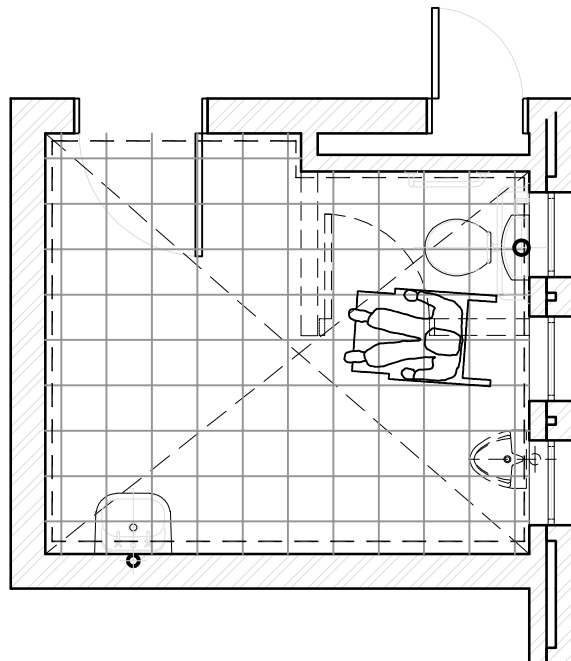
INSTALL NEW TAP
COLD COBRA WATERTECH 505-21B MEDICAL
ELBOW ACTION PILLAR TAP, SQUARE TYPE
MANUFACTURED IN ACCORDANCE WITH SANS
226:2004 TYPE 2.

REPOSITION MIRROR AT WHB
REPOSITION HAND DRYER AND SOAP DISPENSER
AT A LOWER LEVEL



TYPICAL ELEVATION

REMOVE EXISTING DOOR
IRONMONGERY AND INSTALL
2.0 EACH - DORMA DPH301B 300X25MM
STAINLESS STEEL PULL HANDLE WITH
FLANGE FIXING FOR DISABLED
CONFIGURATION
1.0 OFF - UNION 37651 HELPING HAND
INDICATOR BOLT FOR PARAPLEGIC WC
1.0 ONLY - EREBUS HEAVY DUTY
ADJUSTABLE ROLLER BOLT.
1.0 EACH - DORMA DSS-133 STAINLESS
STEEL 150X150MM DISABLED
PERSONS SIGN



Project Title

**LABOUR DEPARTMENT
MASONIC GROVE**

Date: **OCTOBER 2017**

Drawn: **MB**

Scale: **1:50**

Drawing description

PROPOSED DISABLED WC

Dwg No:

WD501

Rev:

A

SAKHISIZWE 
ARCHITECTS

41 SWAPO (BROADWAY), DURBAN NORTH
PRIVATE BAG X12 GATEWAY 4321
TEL : 031 563 3424
EMAIL: info@sakhisizwearchitects.co.za