



Attention: Natasha Higgitt

**RE: Interim Comment: De Beers Demolition Works: CaseID 11434**

**De Beers Consolidated Mines Limited – Namaqualand Mines is currently planning to demolish remaining redundant infrastructure located inside the Buffels Marine Mining Right (BMMR) area, administrative district of Namaqualand, Northern Cape.**

We are writing to confirm whether a Heritage Impact Assessment (HIA) as per section 38(3) and 38(8) of the National Heritage Resources Act, Act 25 of 1999 (NHRA) will still be pertinent as stated in the interim comment of 17 August 2017.

**Reason for query.**

- All the infrastructure listed to be demolished is used for industrial purposes;
- None of the infrastructure has any social or cultural function.
- The infrastructure does not have a positive impact on the sense of place;
- Also, only limited infrastructure is possibly older than 60 years.

We have requested historical aerial photos and maps from the Department of Rural Development and Land Reform National Geo-Spatial Information (NGI). We received aerial photography flown in 1964 (Job no. 525/64) and a map of SOUTH AFRICA 1:50 000 Sheet 2916DB & 2917CA KLEINSEE first edition which contains data from air photography from 1964 (Job no. 525/64) and was surveyed in 1972 and drawn in 1974 by the Director General of Surveys. Building are indicated as black squares on the 1:50 000 sheets.

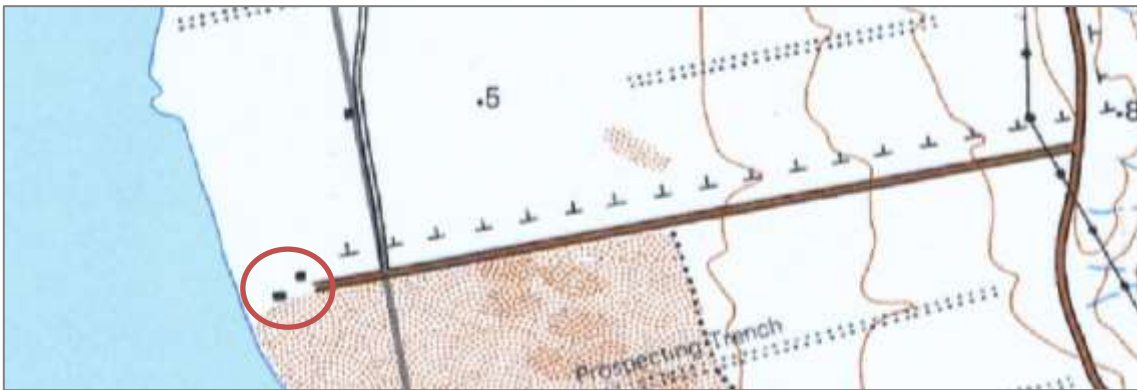
Only the following infrastructure are visible on the historical data received:

- Old Recovery Plant and Dam (Visible on aerial photography and cadastre)
  - Status: As constructed originally
- Dreyerspan Reservoir White Dam (Visible on aerial photography and cadastre);
  - Status: As constructed originally
- Bulk Sample Seawater Intake Dam and Pump (Only visible on cadastre);
  - Status: As constructed originally
- Bulk Sample Seawater Intake Substation (Only visible on cadastre);
  - Status: As constructed originally
- One unidentified building at the BMR Offices (Visible on aerial photography and cadastre)
  - Status: Original footprint used, but new infrastructure constructed over original footprint.

The Aerial photo of 1964, the current satellite photo and the 1:50 000 cadastre are shown below for each of these infrastructures for reference.



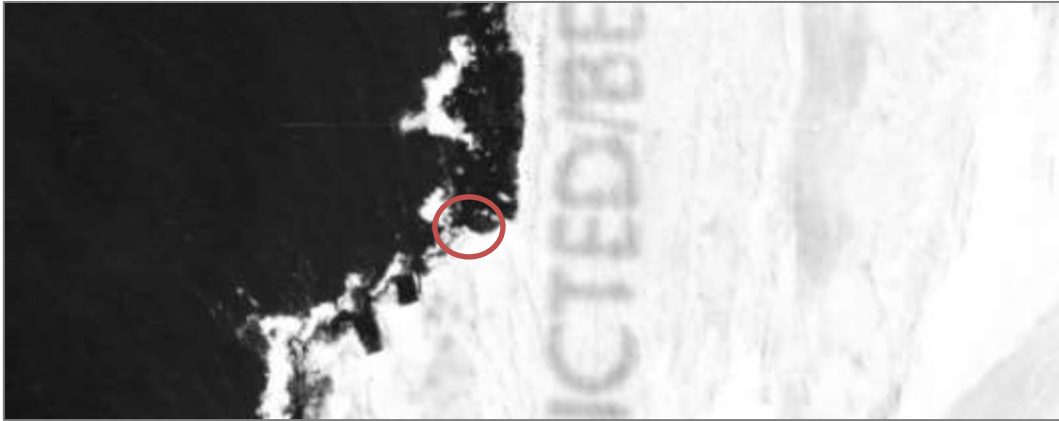
### Old Recovery Plant and Dam



### Dreyerspan Reservoir White Dam



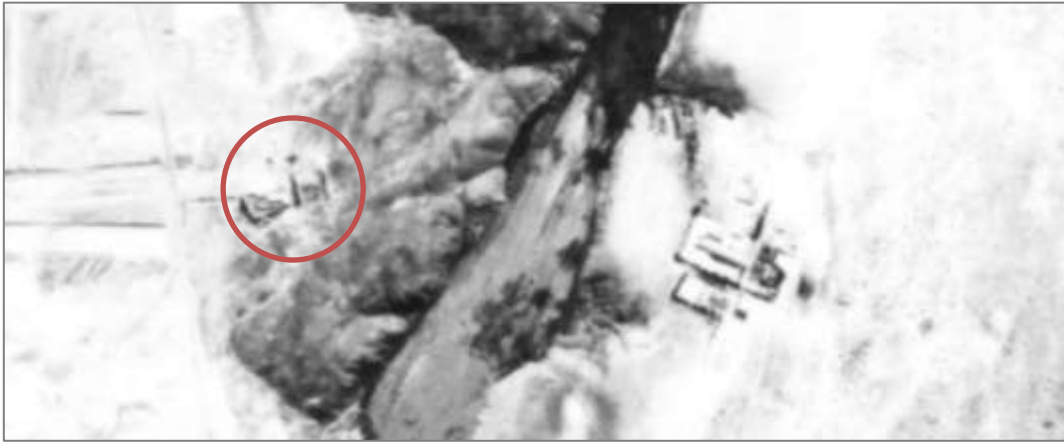
### Bulk Sample Seawater Intake Dam and Pump



### Bulk Sample Seawater Intake Substation



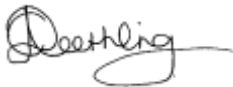
### One unidentified building at the BMR Offices



This data will also be send to the Northern Cape Provincial Heritage Resources Authority (NBKB – Ngwao-Boswa Jwa Kapa Bokone) for commenting.

We look forward to your response.

Yours sincerely



Chrizette D. Neethling  
**Managing Director**