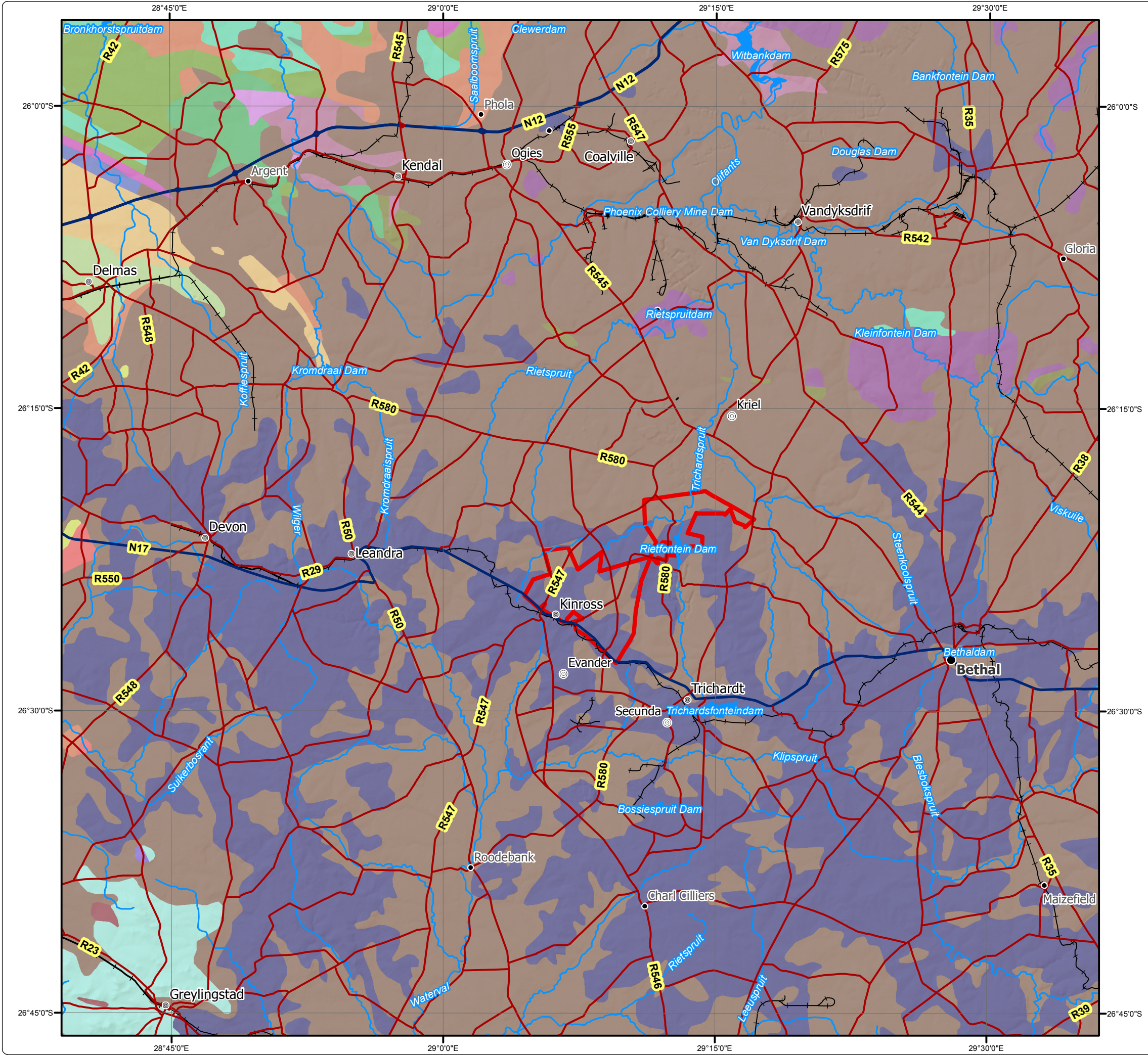


# Sasol Syferfontein Block 4 UG Mining Regional Geology



**Legend**

- Project Boundary
- Major Town
- Secondary Town
- Other Town
- Settlement

**RSA roads**

- Main Road

**CLASS**

- Arterial / National Route
- Railway Line
- River
- Dam

**Regional Geology**

- Daspoort Fm, Pretoria Grp
- Dwarsfontein Cplx
- Dwyka Grp, Karoo Spgrp
- Government Sbgrp, West Rand Grp
- Hospital Hill Sbgrp, West Rand Grp
- Karoo Dolerite Sui
- Klipriviersberg Grp, Ventersdorp Spgrp
- Lebowa Granite Sui, Bushveld Cplx
- Loskop Fm, Transvaal Spgrp
- Madzaringwe Fm, Karoo Spgrp
- Magaliesberg Fm, Pretoria Grp
- Malmali Sbgrp, Chuniespoort Grp
- Platberg Grp, Ventersdorp Spgrp
- Pretoria Grp, Transvaal Spgrp
- Rashoop Granophyre Sui, Bushveld Cplx
- Rooiberg Grp, Transvaal Spgrp
- Silverton Fm, Pretoria Grp
- Strubenkop Fm, Pretoria Grp
- Swazian Erathem
- Turffontein Sbgrp, Central Rand Gr
- Vaalian Erathem

**SASOL** reaching new frontiers

**DIGBY WELLS ENVIRONMENTAL**

www.digbywells.com

Projection: Transverse Mercator Datum: Cape Central Meridian: 29°E Ref #: mpl.SAS1744.201301.018 Revision Number: 2 Date: 08/01/2013

